

LEGEND:

- PLANNING BOUNDARY
- WORKING BOUNDARY
- WATERCOURSE
- PROPOSED PIPE ROUTE
- PUBLIC RIGHT OF WAYS
- TREE
- L.V.
- A.V.
- W.O.
- SETTING OUT POINT
- ELECTRIC POLE
- HAZARD IDENTIFIER
- CLAY STANK

EXISTING SERVICES:

- WATER MAIN
- SEWER MAIN
- ELECTRIC-HV
- ELECTRIC-HV OVERHEAD
- ELECTRIC-LV
- ELECTRIC-LV OVERHEAD
- ELECTRIC LINE
- BT UNDERGROUND
- BT OVERHEAD
- BT-VIRGIN MEDIA
- GAS-LOW PRESSURE
- GAS-MEDIUM PRESSURE
- STORM WATER MAIN
- STREET LIGHT CABLE
- GAS WORKING SAFETY ZONE
- POWER LINE SAFETY ZONE

REFERENCE:
SZ14-T15A-PR1-M3-001-DWG-CST-G04-034: GENERAL NOTES / REFERENCES
40018-001-DWG-CST-G02-001: FLANGE MANAGEMENT DRAWING

KEY PLAN
SCALE: NTS

Drawing Status: FOR REVIEW BY LEAD APPOINTED PARTY

Suitability: S4

Rev.	Description	Date	Drawn	Chk'd	App'd
P06	FOR REVIEW	17.11.2023	AJ	RH	SK
P05	FOR REVIEW	10.10.2023	AJ	RH	SK
P04	FOR REVIEW	18.09.2023	AJ	RH	SK
P03	FOR REVIEW	26.07.2023	AJ	RH	SK
P02	FOR REVIEW	30.06.2023	AJ	RH	SK

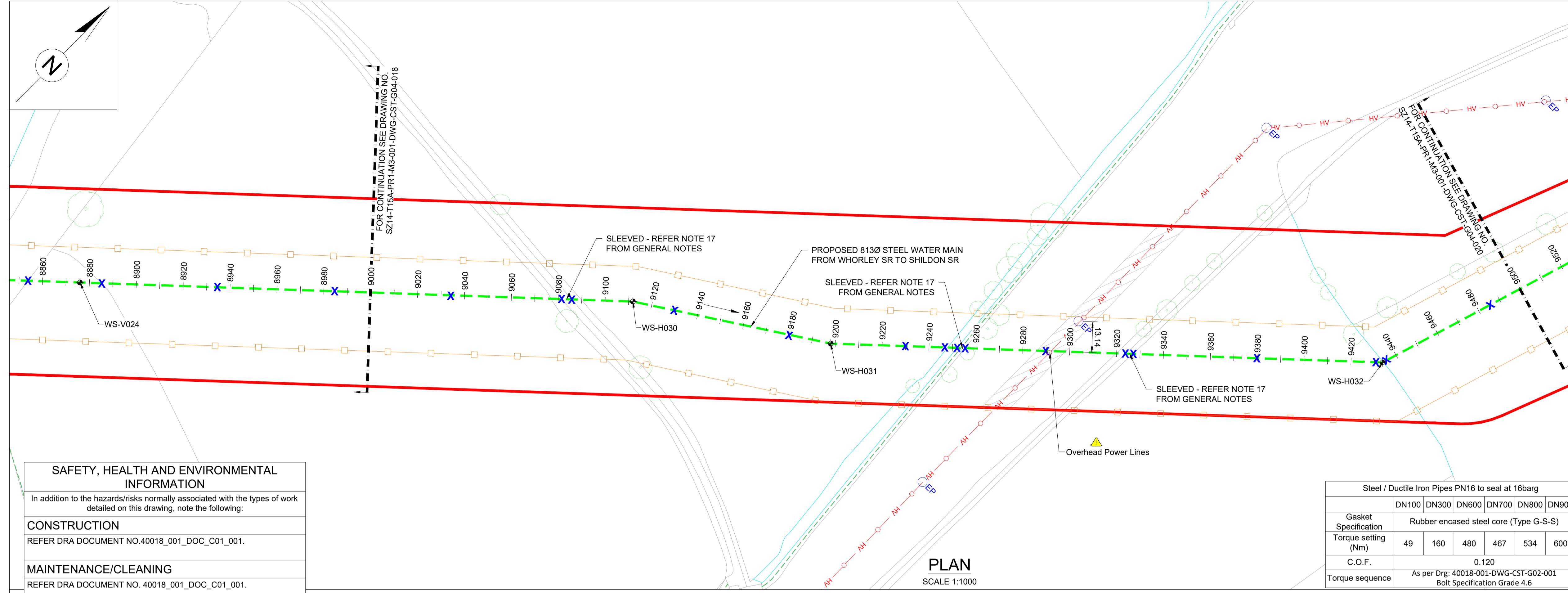
Note:-
IF THIS DRAWING IS FOUND TO BE IN ANY WAY INACCURATE, PLEASE ADVISE THE RECORD OFFICE IMMEDIATELY AND COMPLETE AN AMENDMENT FORM.

CONTRACTOR: FARRANS
REF. NO.: WN019/0205-4.11
I.D. PROJECT NO.: WN019/0205

Drawing Title:
TEES STRATEGIC TRANSFER MAIN
WHORLEY SR TO SHILDON SR
PLAN AND LONGITUDINAL SECTION

Dwg No: SZ14-T15A-PR1-M3-001-DWG-CST-G04-019

Sheet: 19 OF 33 | **Date:** 17.11.2023 | **Sheet:** A1 | **Scale:** AS SHOWN | **Rev No:** P06



Steel / Ductile Iron Pipes PN16 to seal at 16barg						
Gasket Specification	DN100	DN300	DN600	DN700	DN800	DN900
Torque setting (Nm)	49	160	480	467	534	600
C.O.F.	0.120					
Torque sequence	As per Drg: 40018-001-DWG-CST-G02-001 Bolt Specification Grade 4.6					

SAFETY, HEALTH AND ENVIRONMENTAL INFORMATION

In addition to the hazards/risks normally associated with the types of work detailed on this drawing, note the following:

CONSTRUCTION
REFER DRA DOCUMENT NO.40018_001_DOC_C01_001.

MAINTENANCE/CLEANING
REFER DRA DOCUMENT NO. 40018_001_DOC_C01_001.

DECOMMISSIONING/DEMOLITION
REFER DRA DOCUMENT NO. 40018_001_DOC_C01_001.

It is assumed that all works will be carried out by a competent contractor working, where appropriate, to an approved method statement

WHORLEY TO SHILDON SETTING OUT POINTS		
CHAINAGE (m)	EASTING	NORTHING
9000	417455.368	521684.446
9040	417484.769	521711.567
9080	417514.170	521738.689
9120	417544.443	521764.682
9160	417578.115	521786.274
9200	417611.577	521808.137
9240	417640.978	521835.259
9280	417670.379	521862.380
9320	417699.780	521889.502
9360	417729.181	521916.624
9400	417758.582	521943.745
9440	417785.086	521972.695
9480	417796.920	522010.904

HORIZONTAL BEND		
SOP NO.	EASTING	NORTHING
WS-H030	417537.568	521760.273
WS-H031	417610.135	521806.807
WS-H032	417783.135	521966.395

