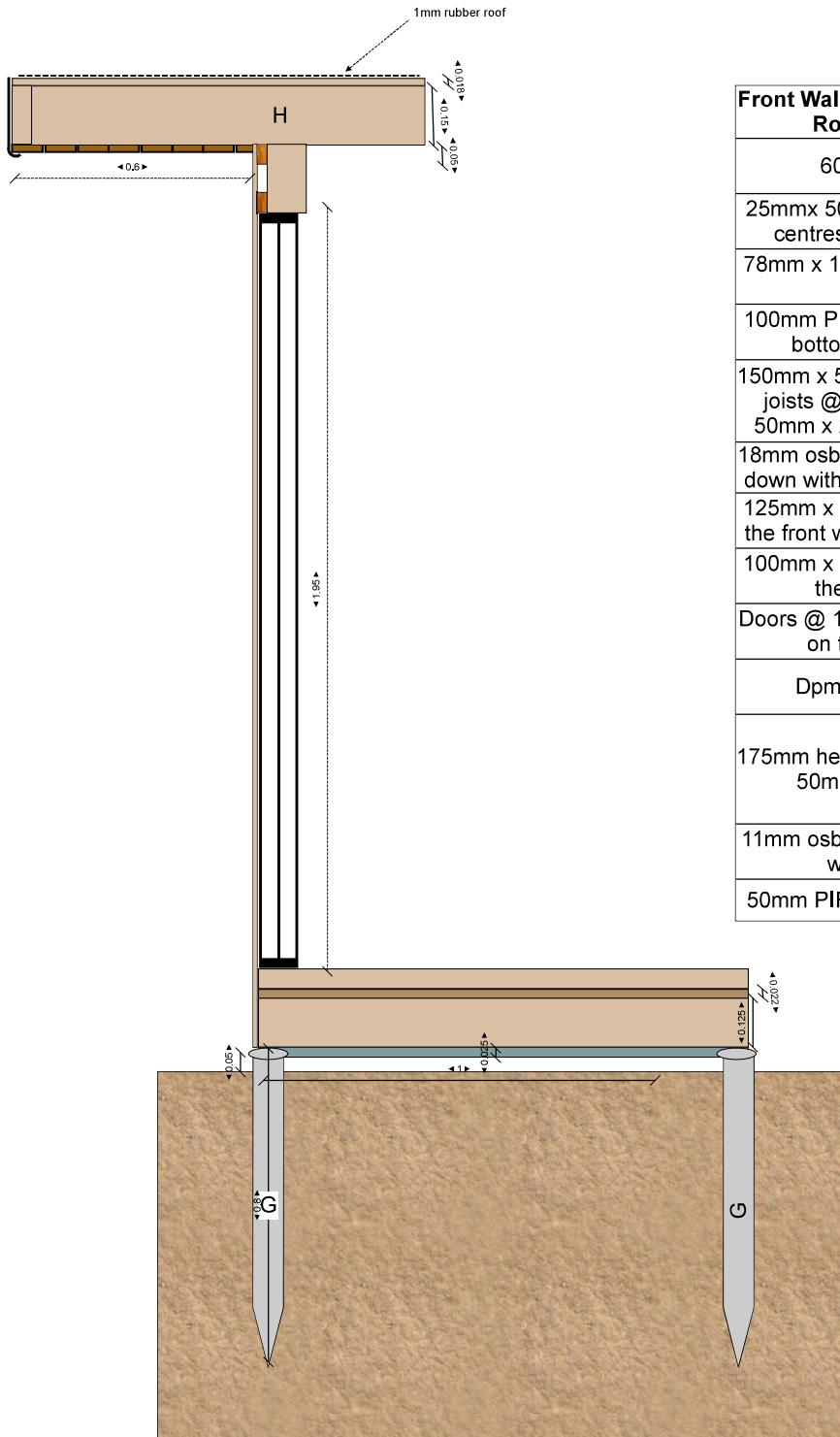


Joinery Detail
Over Hang - Side View



Front Wall Detail and Over Hang Roof Specification

600mm over hang
25mm x 50mm batons @ 400mm centres, fix with 50mm nails
78mm x 18mm timber cladding in the overhang
100mm PIR insulation tight to the bottom of the roof joists
150mm x 50mm c24 tanalized roof joists @ 400mm centres, use 50mm x 200mm metal hangers
18mm OSB board for the roof, fixed down with 5 min glue and screws
125mm x 50mm c24 tanalized for the front walls @ 400mm centres
100mm x 50mm c24 tanalized for the top plate in wall
Doors @ 1950mm with 10mm gap on the sides and top
Dpm for below the door
175mm header beam with 25mm x 50mm lats on the front
11mm OSB for the outer wall, fixed with 50mm nails
50mm PIR insulation in the walls

H	Timber joist hanger
G	Ground Screw 800mm