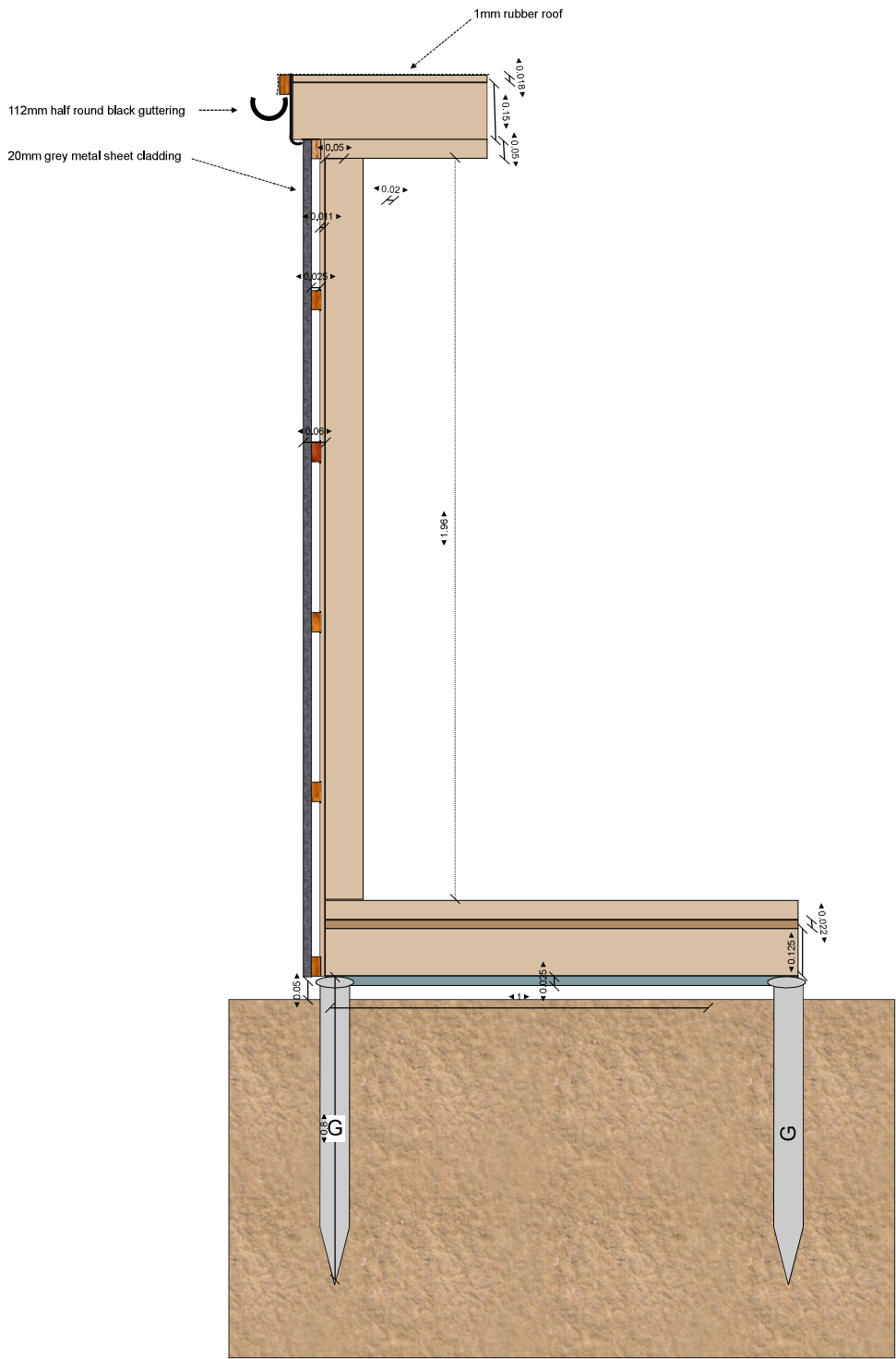


Joinery Detail
Rear view/ gutter detail



Walls and Roof Specification
25mmx 50mm batons @ 400mm centres, fix with 50mm nails
100mm PIR insulation tight to the bottom of the roof joists
150mm x 50mm c24 tanalized roof joists @ 400mm centres, use 50mm x 200mm metal hangers
18mm osb board for the roof, fixed down with 5 min glue and screws
100mm x 50mm c24 tanalized for the std walls @ 400mm centres
100mm x 50mm c24 tanalized for the top plate in wall
20mm metal sheet cladding for external wall, fix with 40mm self tapping metal screws with plastic caps
11mm osb for the outer wall, fixed with 50mm nails
50mm PIR insulation in the walls
112mm half round black plastic guttering / 68mm black down pipe

Timber Base Specification
78mm x 800mm Ground screws used every 1m2 leaving 50mm ground clearance
25mm x 50mm tile batton, use under the floor joists to hold the pir insulation
100mm PIR floor insulation
125mm c24 tanalized for floor joists @ 400mm centres
100mm x 50mm c24 for walls
22mm chipboard flooring
78mm x 800mm Ground screws used every 1m2 leaving 50mm ground clearance

H	Timber joist hanger
G	Ground Screw 800mm