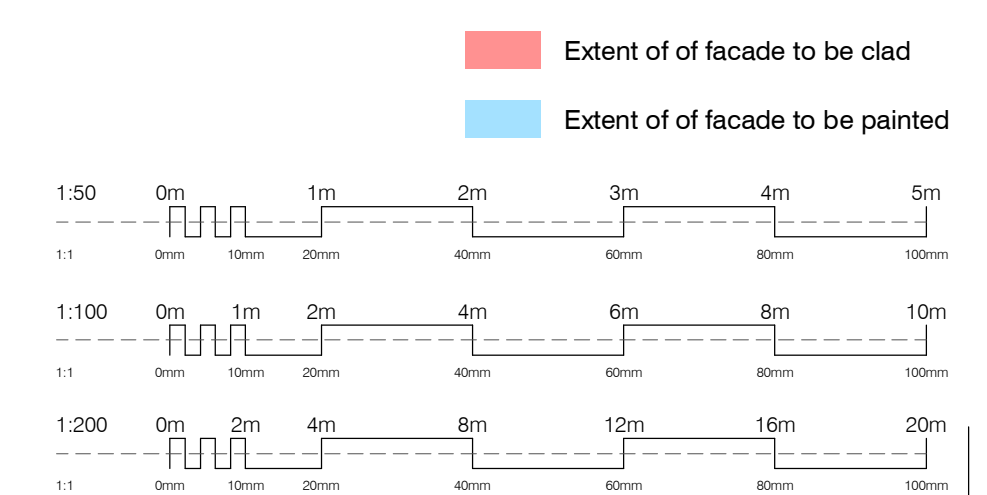
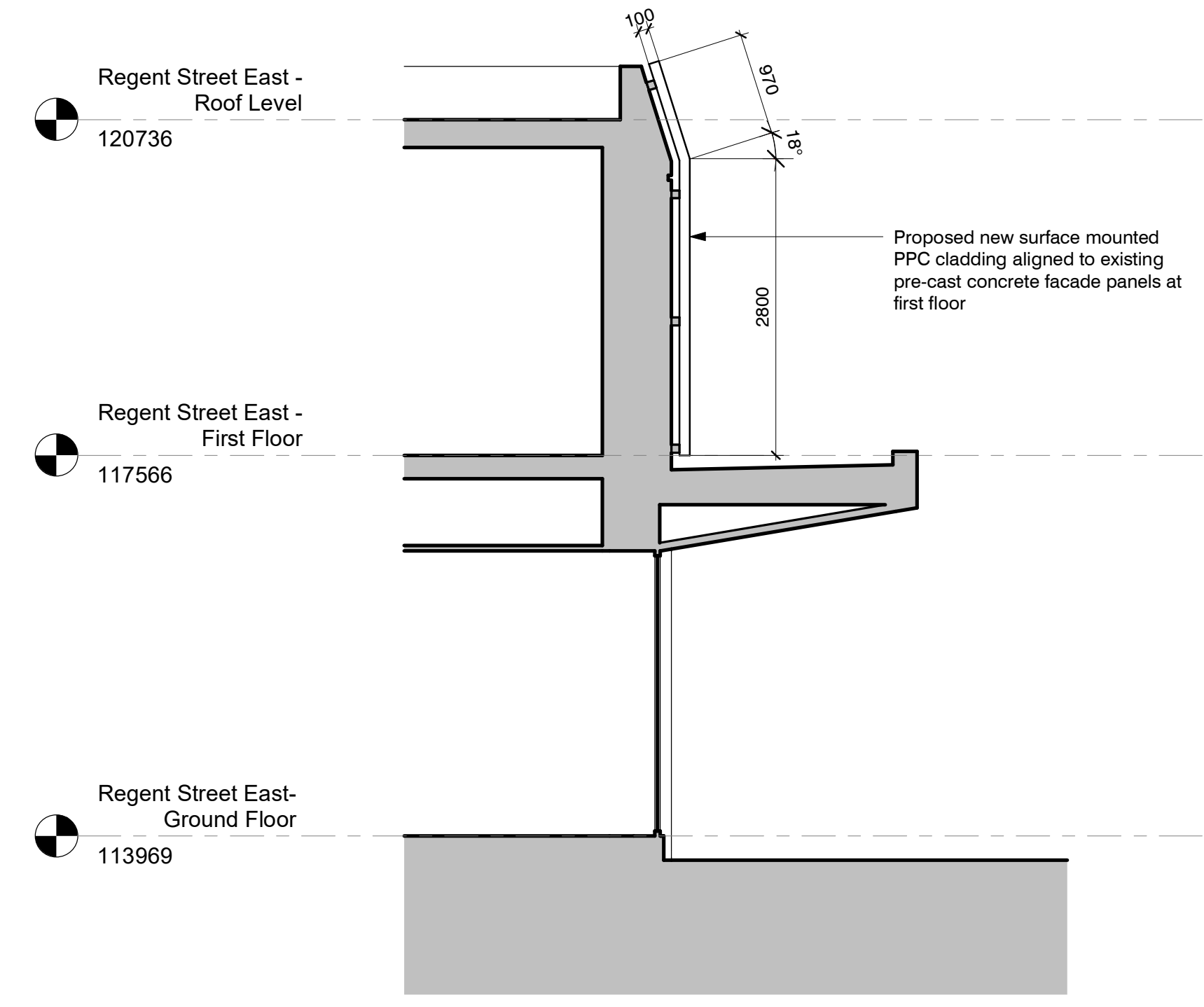
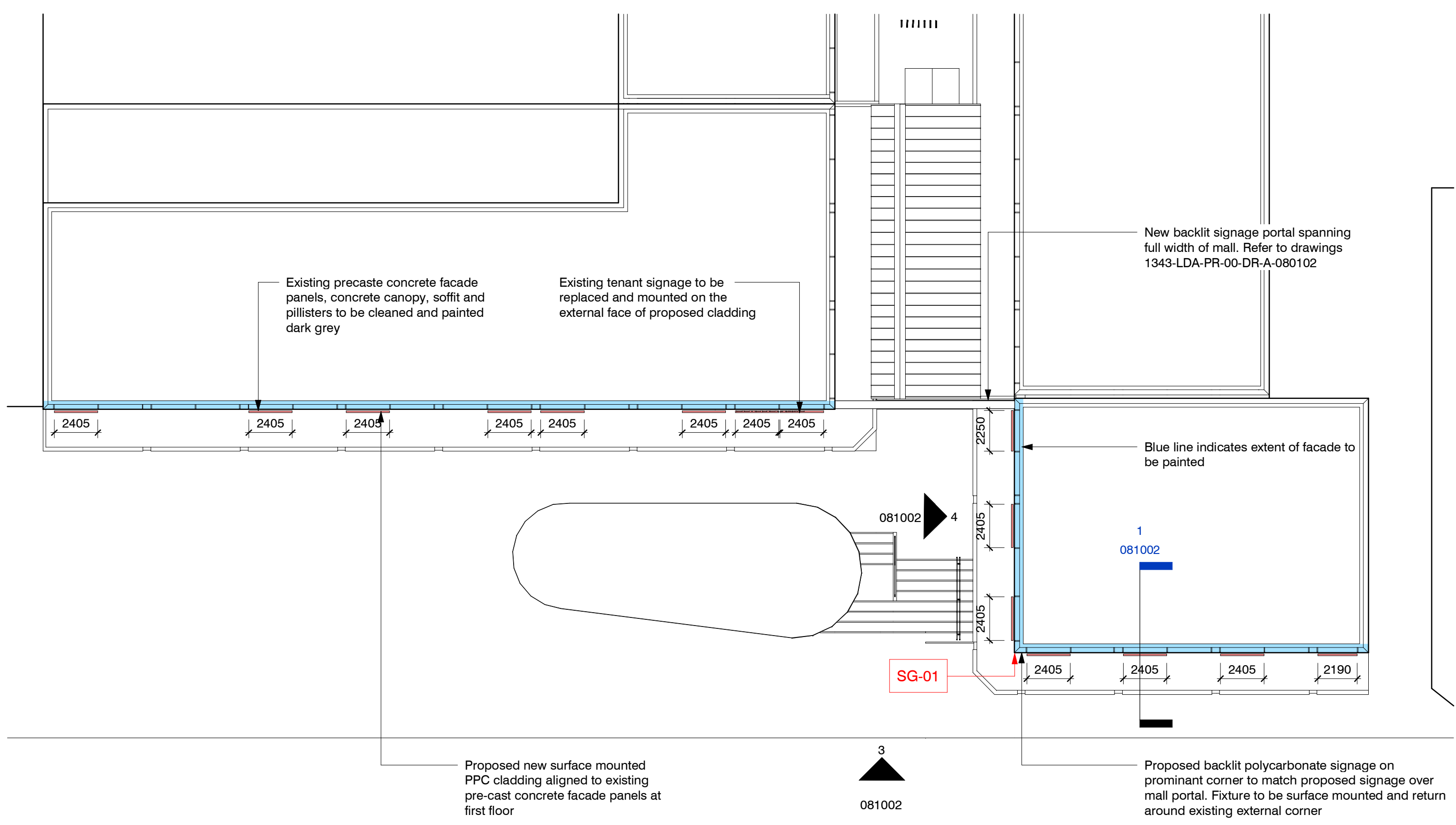
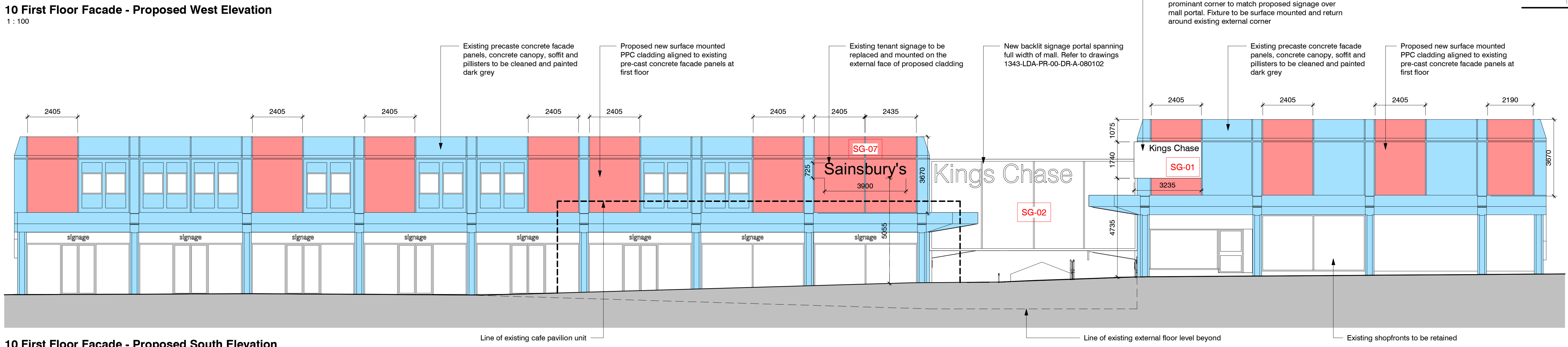
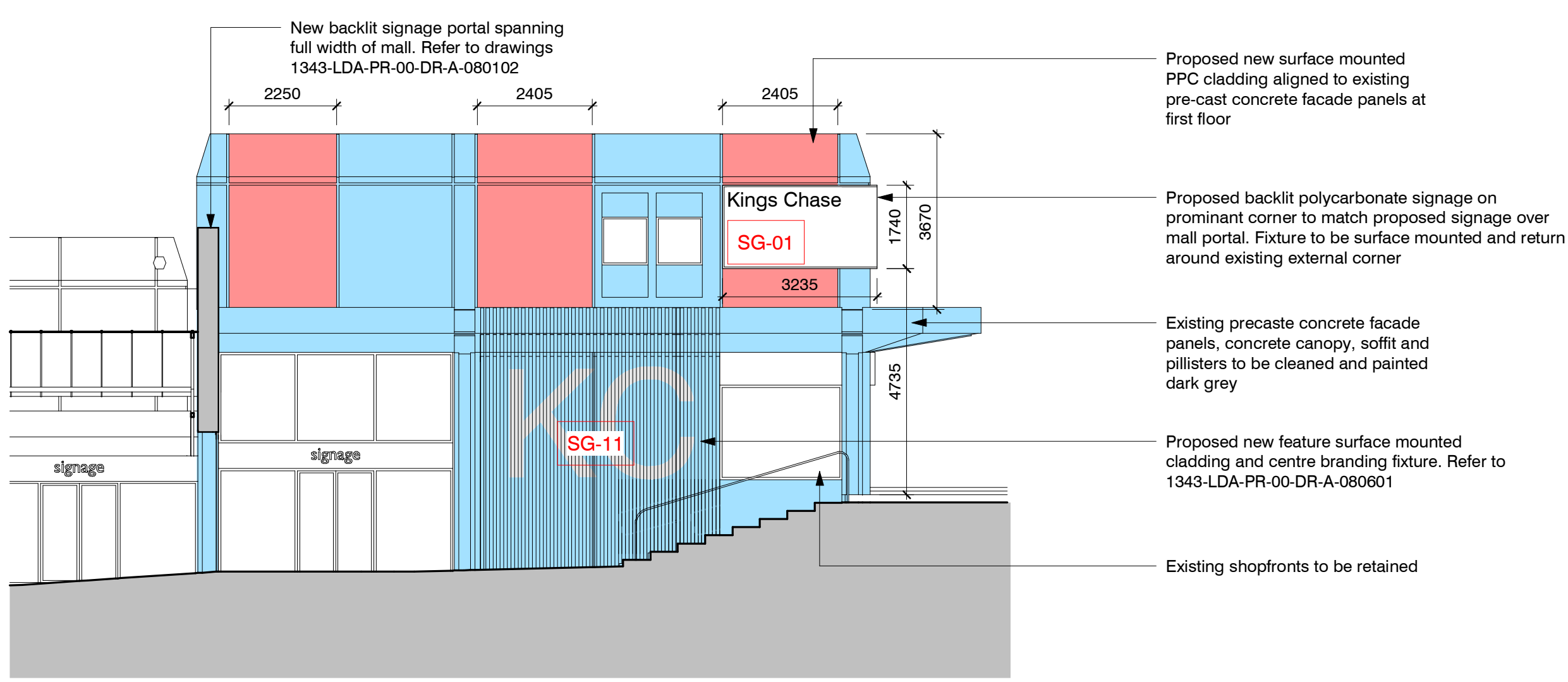
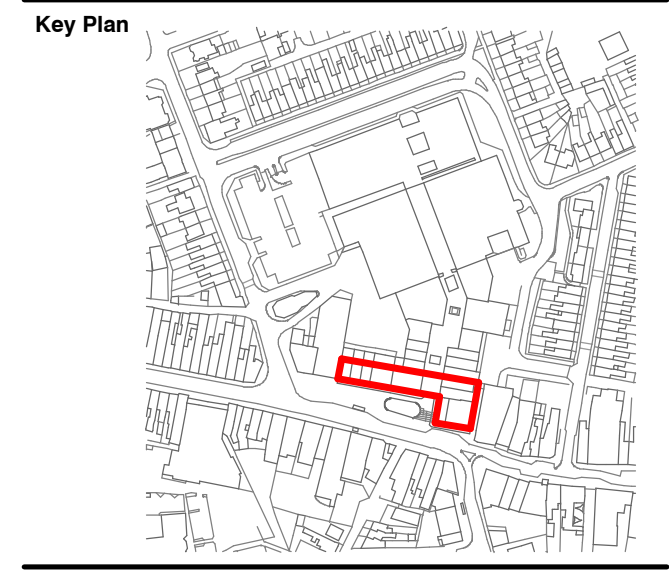
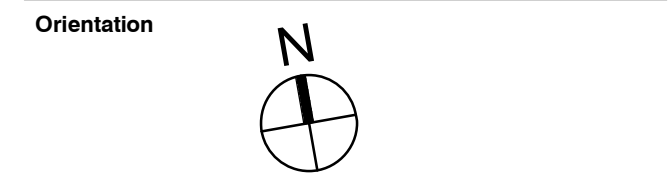


Dimensions to be verified on site. Use figured dimensions only. Do not work from reduced scale drawings. Please refer to scale and sheet size as indicated.

This drawing is the property of LEONARDO DESIGN ARCHITECTS LTD. ©

Copyright is reserved by them and the drawing is issued on the condition that it is not copied, reproduced, retained or disclosed to any unauthorised person without the prior consent in writing of Leonard Design Architects Ltd. All rights reserved.

DO NOT SCALE - unless for planning purposes



Rev. Date	Revision	By	Checked
P02 01.02.24	Scale note amendment	JE	SB
P01 19.01.24	Planning Issue	JE	SB
P00 20.12.23	Initial Issue	JE	SB

leonard design architects
4th floor, Albion House
5-13 Canal Street
Nottingham, NG1 7EG, United Kingdom
t. +44 (0) 115 945 0080
e. office@leonarddesignarchitects.com

Client
Praxis Real Estate Management Limited
Project
Kings Chase Shopping Center

Drawing Title
First Floor Facade - Proposed

Project Number
1343

Drawn by
YZ

Checked by
JE

Scale @A1
As indicated

Date
15/01/2024

File Identifier
1343 - LDA - PR - 00 - DR - A - 081002

Revision
P02

Purpose of Issue
Planning Application

Project Status
PLANNING