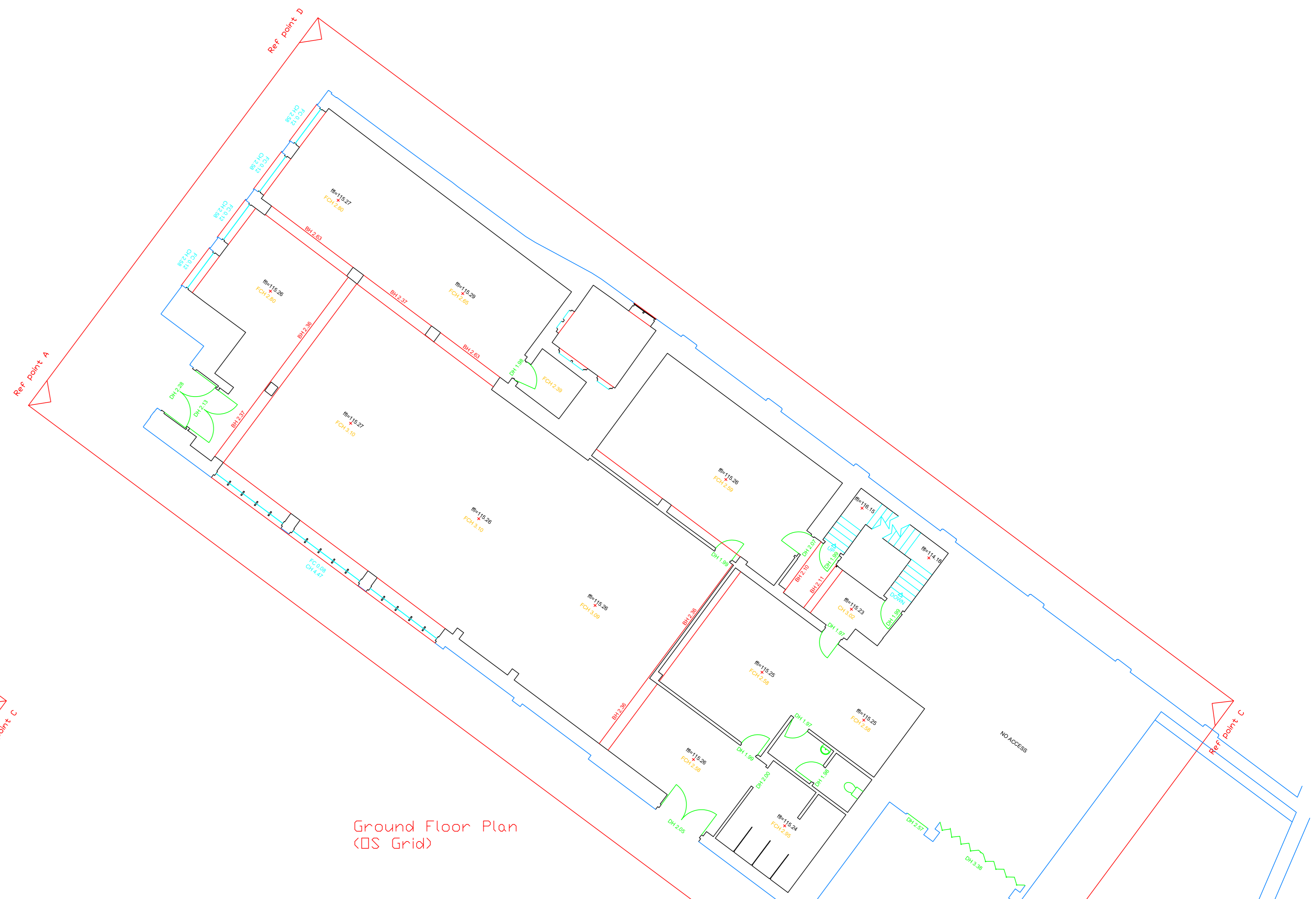
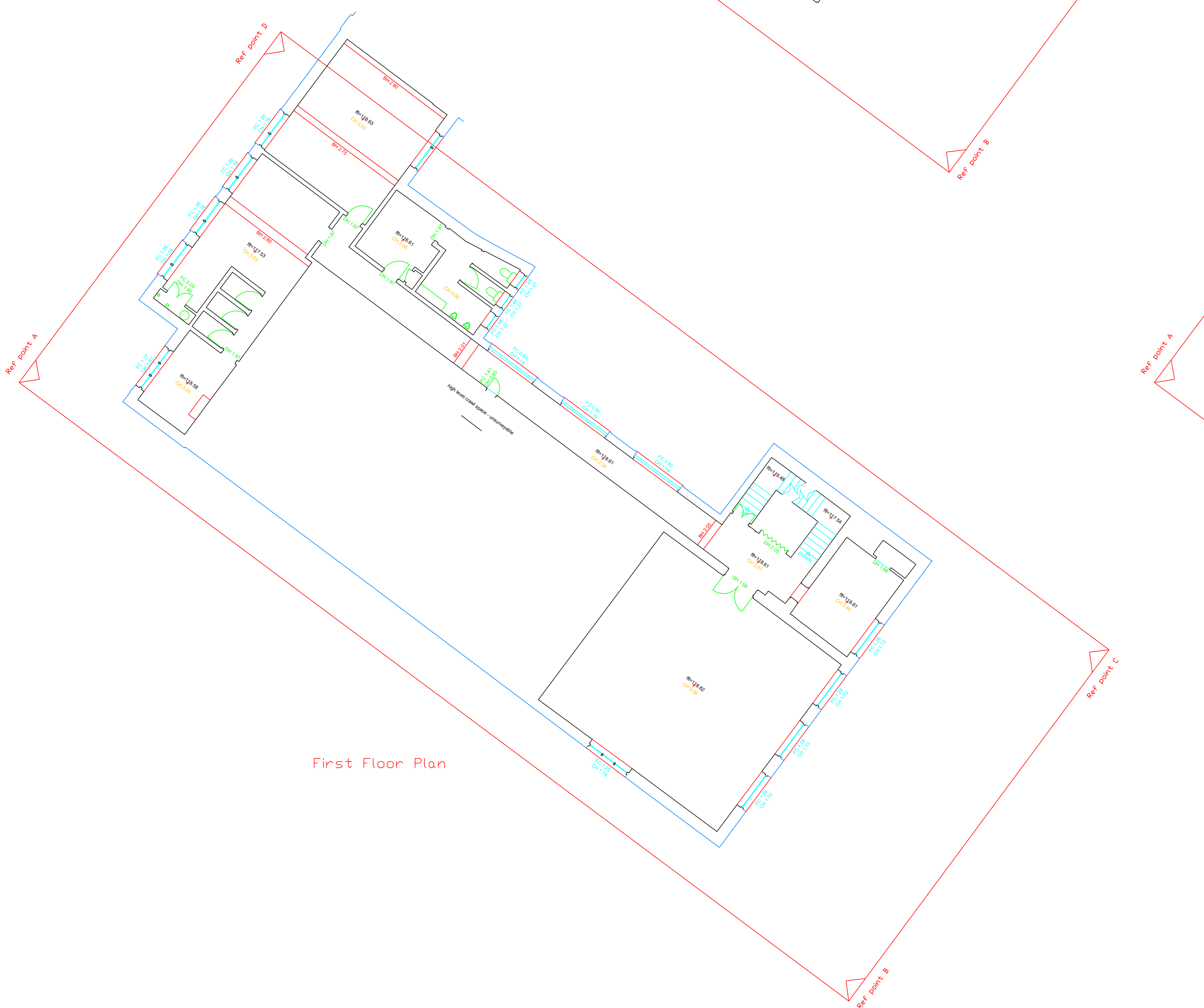




Basement Plan



Ground Floor Plan
(BS Grid)



First Floor Plan



Second Floor Plan

GRID
To local grid based on site datum / To local grid based on easting569m15

control point
ZP.11

spot level
ZP.11

All linework described by layering system or nearby text

wall (see text for height / width / type)

fence (see text nearby for height / type)

gate

hedge scaled to width

Canopy/Vegetation line

deciduous tree
defined by trunk & one point on canopy
(girth size and position +/- 50mm)

conifer tree
defined by trunk & one point on canopy
(girth size and position +/- 50mm)

GENERAL ABBREVIATIONS
ac box - air conditioning box
av - air valve
bb - ball-bear beacon
bt - British Telecom
conc - concrete
conc ball - concrete ballard
conc wall - concrete wall
ctv - cable TV
dk - drop kerb
ds - down spout
dsg - down spout with gully
earth - earth point
ods - green ridge cut grass
el - electric
el sub-st - elec. substation
face conc - face of concrete
face clad - face of cladding
face tim - face of timber
Hydr - fire hydrant
gpr - gpr repository
lp - lamp post
rod eye - rodding eye
rot wall - retaining wall
rpt - roof tank
s&t - salt box
st - sign - with indicative text
surf - surface drain
st lap - stop lap
sv - sluice valve
trd - tralls
ts - traffic signal
utility - utility (unknown)

LEVEL ABBREVIATIONS
c0-0.11 - cover level
dpc-0.11 - dpc level
dse-0.11 - dse level
ff-0.11 - finished floor level
gull-0.11 - gully top level
gutter-0.11 - gutter level
rip-0.11 - rip level
ramp-0.11 - ramp level
rd-0.11 - ridge level
s&t-0.11 - salt level
sl-0.11 - all level
top conc-0.11 - top of concrete
top-0.11 dia. 10 - top of pipe
Lst-0.11 - top of sleep
bed-0.11 - top of wall
wat-0.11 - water level

FENCE ABBREVIATIONS
blw - barbed wire
cl - chain link
clb - close boarded
cl - corrugated iron
conjam - concrete panel
cra - crash barrier
hr - hand rail
lr - loop rail
pal - palisade
panel - panel
pb - public barrier
pik - picket
pi - post & rail
pik - post & rail
sec - security fence
wood - wooden fence

FLOOR PLAN ABBREVIATIONS
ff - finished floor level
F.O. - face to call
CH - call to head
CH - ceiling height
LP - low point
HP - high point
BH - beam height
DH - door height
SHY - skylight
AH - access hatch

Disclaimer
Only manholes that were accessible on site during survey
Other manholes may be present but covered
All levels taken where possible at main channel
Main Entry to sewers has not been undertaken. Drains, Poles etc
are measured from the ground. All sewers and inverts to be checked
prior to any works commencing on site. The CAD Room Ltd are
not responsible for manholes, services, information not surveyed which
may have an impact on site development.
Boundaries shown are physical and may not represent legally conveyed

Client:
CRC Design

Location:
Select
Bumley

Comments:

Unit 1 Arden Business Centre
Horsfield Way
Bredbury Ind. Estate
Bredbury
SK6 2SU
T: 0161 427 0348
E: www.thecadroom.com

Client:
CRC Design

Location:
Select
Bumley

Comments:

Drawing Number: 142-S-1001-Select Bumley
Date: 16.06.2023
Drawn By: CC

Revision: A
Scale: 1:100 @ A0
Checked By: LX

GSD
To local grid based on site datum/To local grid based on osn15649m15

control point
spot level
20.13

All linework described by layering system or nearby text

wall (see text for height / width / type)

fence (see text nearby for height / type)

gate

hedge scaled to width

Canopy/Vegetation line

deciduous tree

defined by trunk &
one point on canopy

(girth size and position +/- 50mm)

conifer tree

defined by trunk &
one point on canopy

(girth size and position +/- 50mm)

GENERAL ABBREVIATIONS

ac box - air conditioning box
av - air valve
bb - ballball beacon
bt - British Telecom
conc - concrete
conc. bal - concrete ballard
conc. wall - concrete wall
ctv - cable TV
dk - drip kerb
ds - down spout
dsdg - down spout with gully
earth - earth point
eds - edging - edge cut grass
el - electric
el sub st. - elec. substation
face conc. - face of concrete
face clad - face of cladding
face tim - face of timber
Fhyd - fire hydrant
gr - grid repository
lp - lamp post
rod eye - rising eye
rot. wall - retaining wall
rsl - cabinet
salt - salt box
sl - sign - with indication text
suf - drain - surface drain
stlap - step lap
sv - sluice valve
tel - talls
ts - traffic signal
utility - utility (unknown)

LEVEL ABBREVIATIONS

ch60.11 - cover level
dps60.11 - dip level
dps60.11 edges level
ff60.11 finished floor level
gutter60.11 - gutter level
fig60.11 - fig level
f60.11 - frost level
ch60.11 - overhead level
canop60.11 - canopy level
rd60.11 - ridge level
all60.11 - all level
all60.11 - all level
top conc60.11 - top of concrete
top60.11 dia. 10' - top of pipe
Lat60.11 - top of sleep
bed60.11 - top of wall
wat60.11 - water level

FENCE ABBREVIATIONS

bw - barbed wire
cl - chain link
cb - close boarded
cl - corrugated iron
conpan - concrete panel
coba - crash barrier
hr - hand rail
U - foot rail
pd - post & rail
pnl - panel
pb - public barrier
pik - post
pr - post & rail
pr - post & rail
sec - security fence
wood - wooden fence

FLOOR PLAN ABBREVIATIONS

ff - finished floor level
F.O. - floor to cell
CH - ceiling height
LP - low point
HP - high point
BH - beam height
DH - door height
SKY - skylight
AH - access hatch

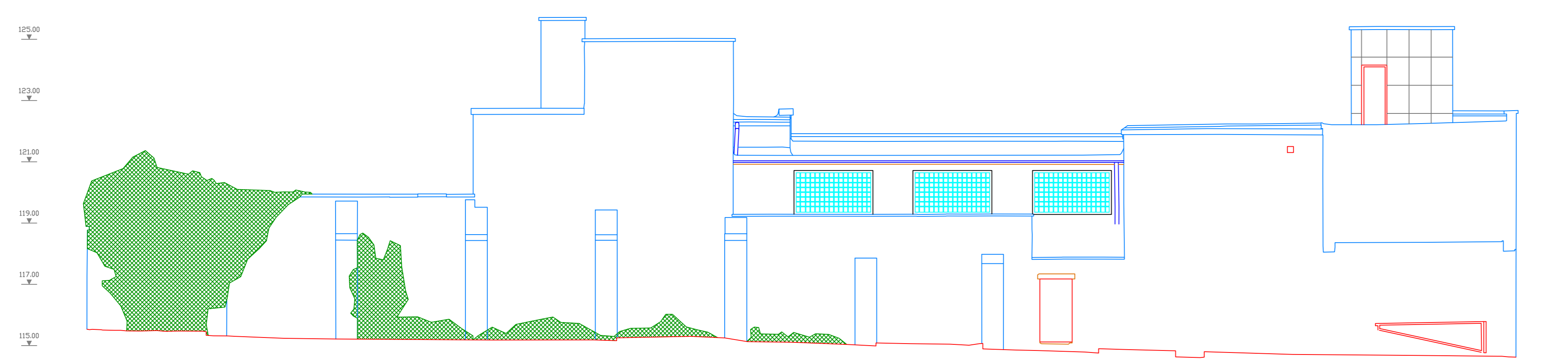
Disclaimer
Only manholes that were accessible on site during survey
other manholes may be present but covered
all invert levels taken where possible at main channel
Main Entry to sewers has not been undertaken. Depths, Positions etc
are measured from the ground. All sewers and inverts to be checked
prior to any works commencing on site. The CAD ROOM Ltd are
not responsible for manholes, services, information not surveyed which
may have an impact on site development.
Boundaries shown are physical and may not represent legally conveyed

Unit 1 Arden Business Centre
Horsfield Way
Bredbury Ind. Estate
Bredbury
SK6 2SU
T: 0161 427 0348
E: www.thecadroom.com

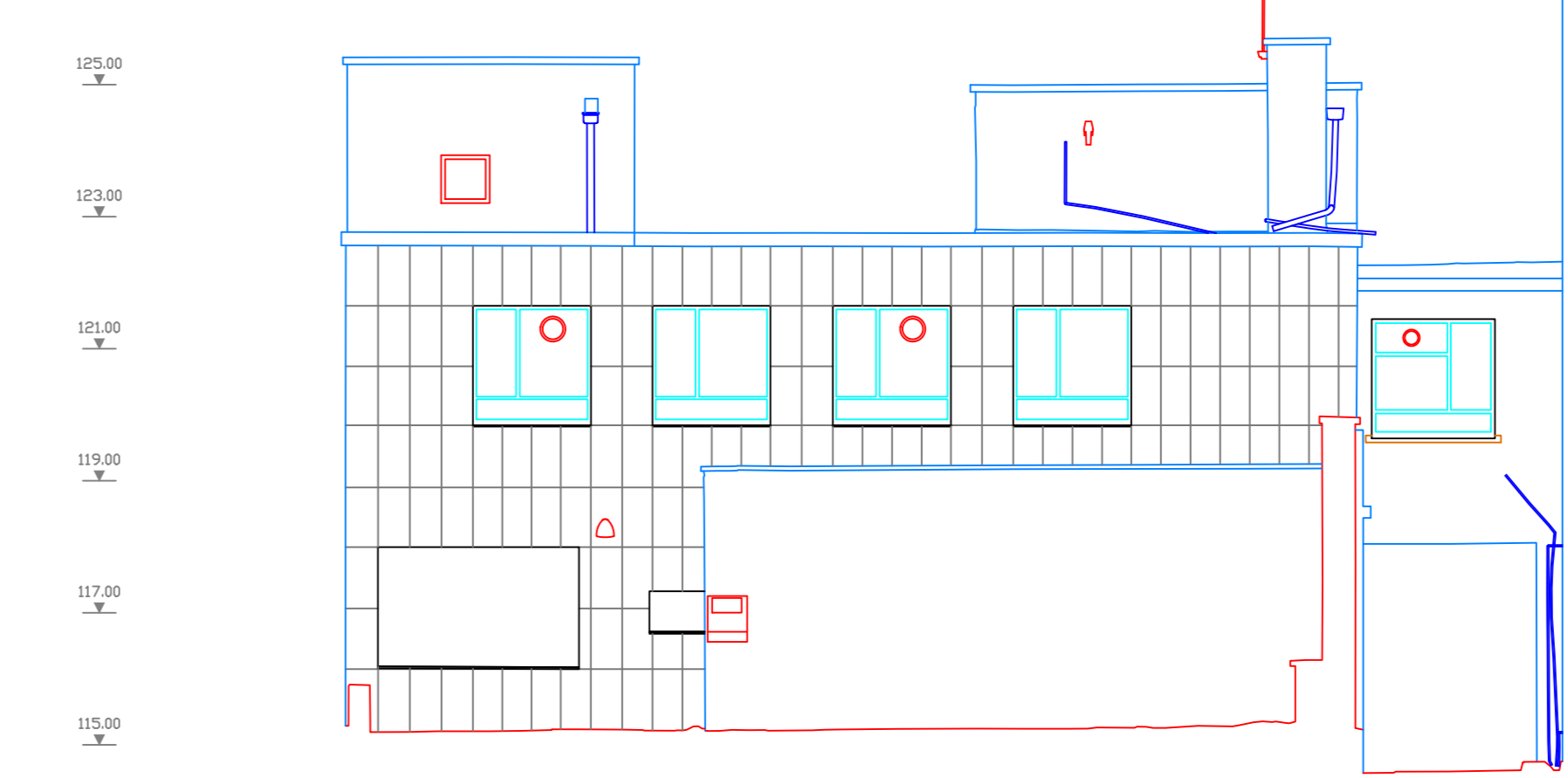
Client:
CRC Design
Location:
Select
Bumley

Comments:

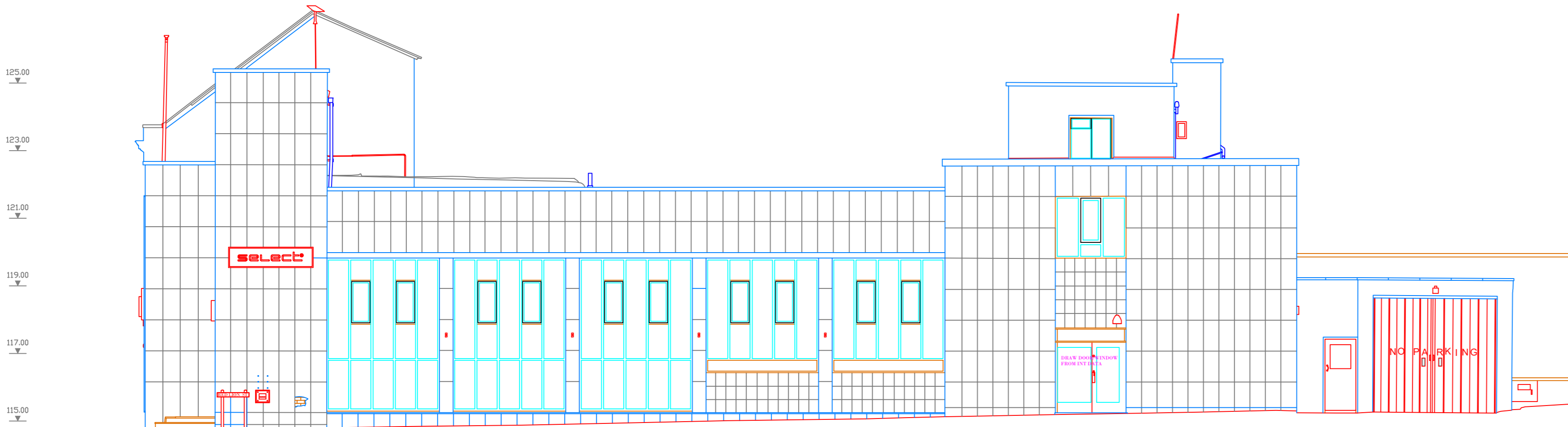
Drawing Number: 142-S-1001-Select Bumley	Revision: A
Date: 16.06.2023	Scale: 1:100 @ AO
Drawn By: CC	Checked By: LK



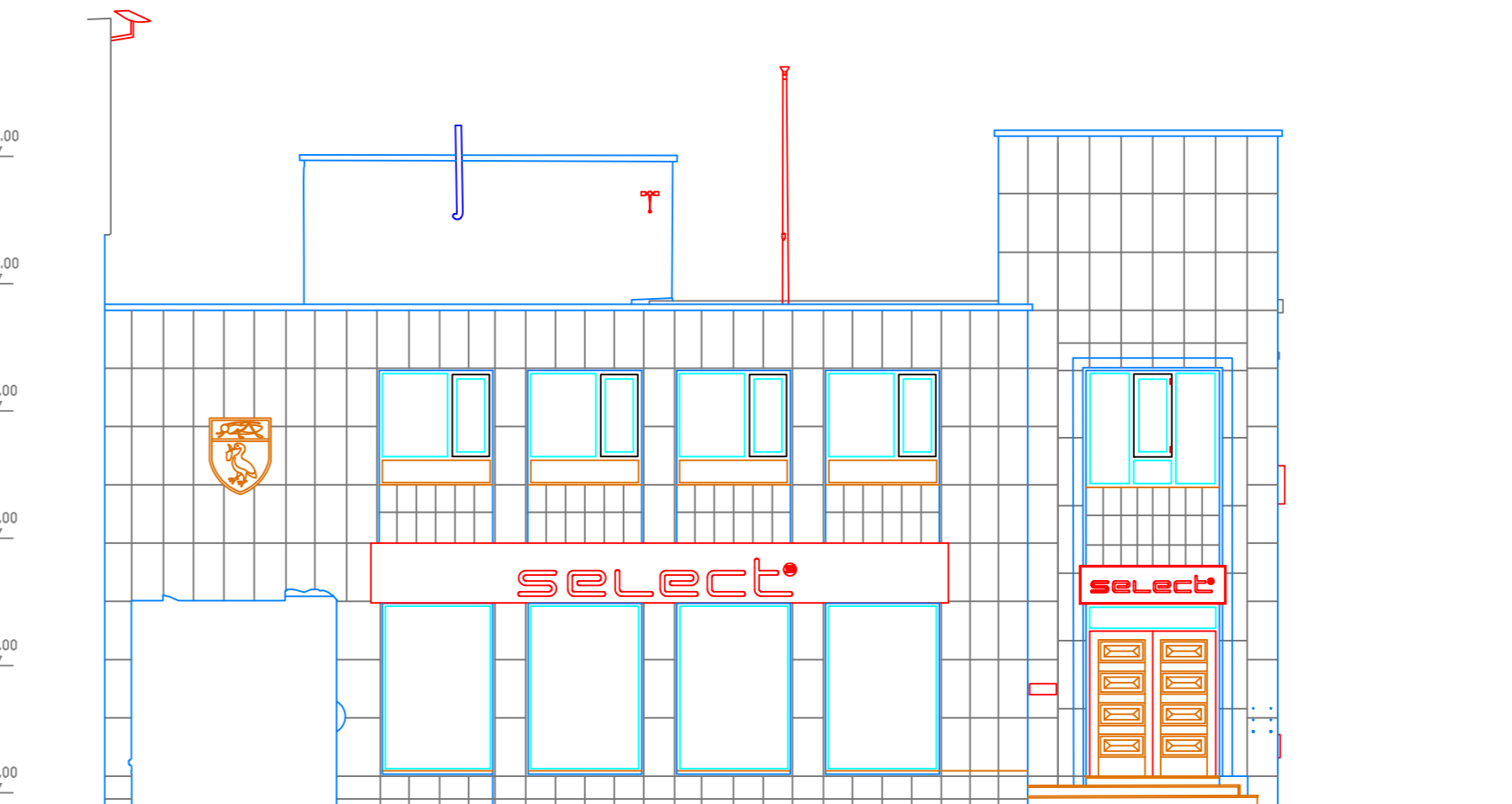
North Elevation
ref points can be used to align plans and elevations accurately
these points only and not edges of buildings must be used



East Elevation



South Elevation



West Elevation