



COLORADO

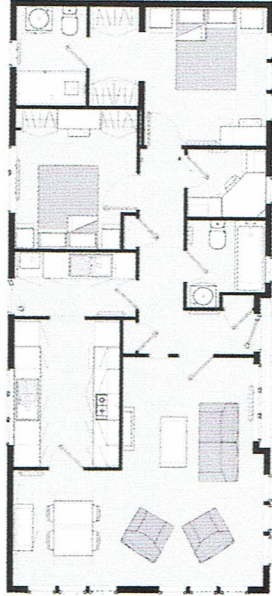


Key Features

- Dutch barn style roof with large dormer over feature inset front door
- Feature brick effect corner quoins, slips below windows and diamond over entrance
- 'L' shaped lounge / dining area
- Wall-mounted ivory fire
- Fitted furniture to bedrooms including dressing tables and free-standing bedside cabinets
- Floor standing vanity units with sit-on basins in the bathroom and en-suite
- Utility room and study available on selected floor plans

Example Floor Plan (45' x 20')

The Colorado is available in a range of standard floor plans which can be adapted to suit your individual needs.



The minimum size for this model is 38' x 20' and the maximum size is 65' x 22'.

Visit our showground

To see our park homes and lodges first-hand, book an appointment to visit us. We have showgrounds with a number of models available to view at both our Brandon, Suffolk and Hull manufacturing facilities.

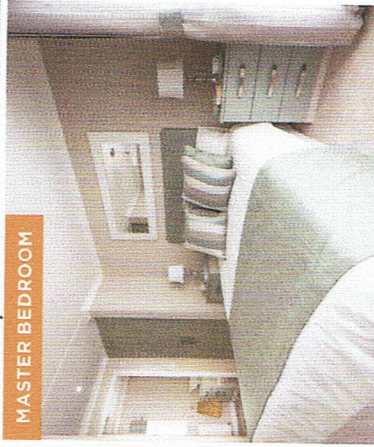
Please note: Decking and props are not included, some photos may include optional extras and specifications and layouts may differ from those shown here. For full details, please contact our sales team.



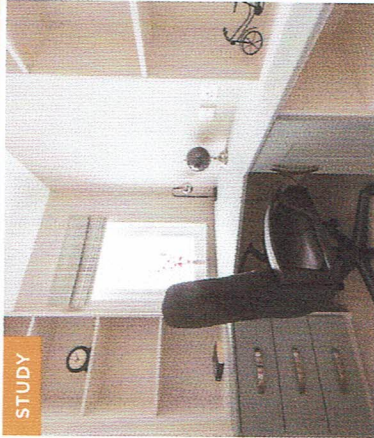
LIVING AREA



BATHROOM



MASTER BEDROOM



STUDY



KITCHEN

Omar Park & Leisure Homes, Pleszko House, London Road, Brandon, Suffolk IP27 ONE

01842 810 673 | www.omar.co.uk | sales@omar.co.uk

To see more scan this code

