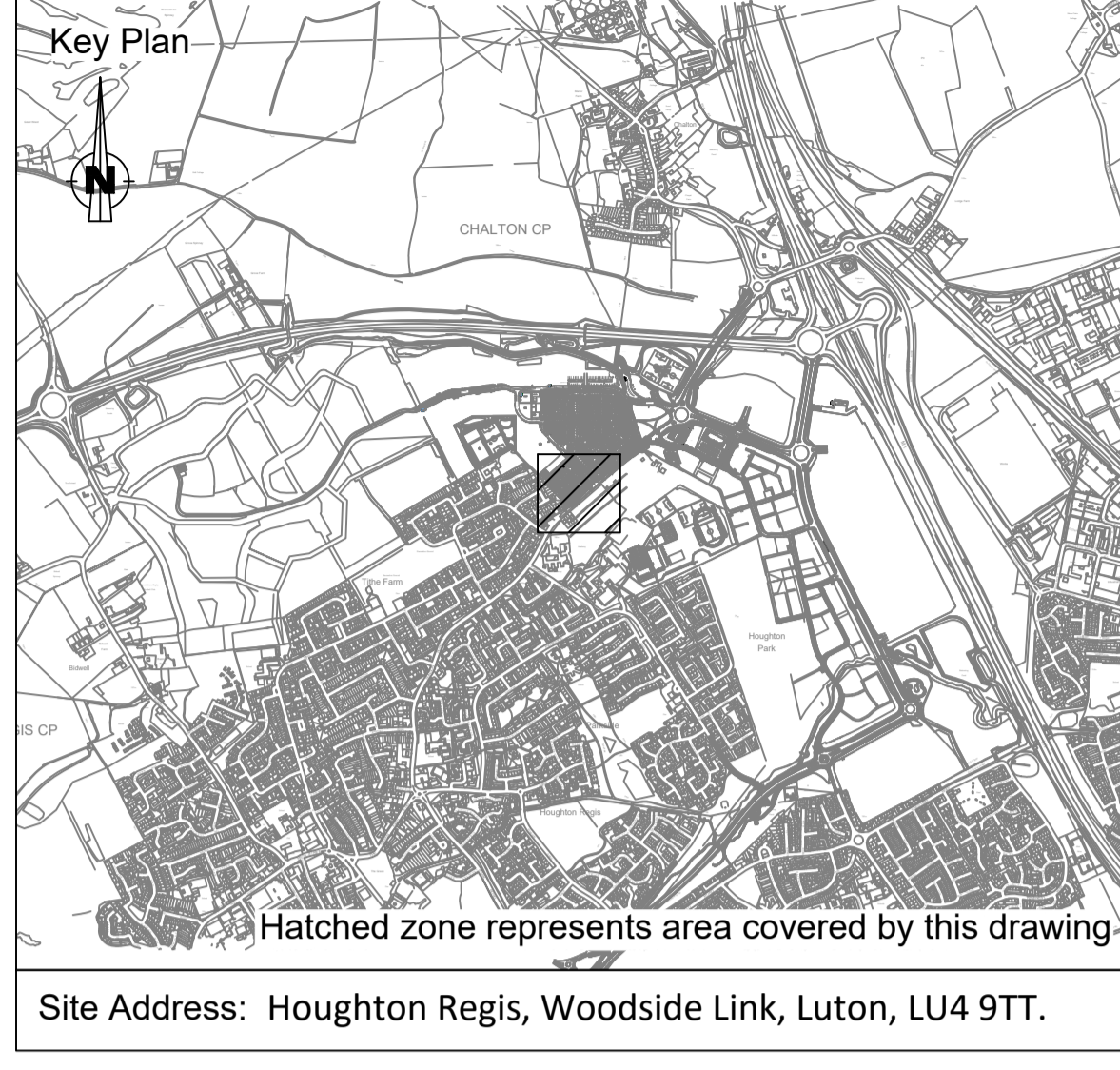


1:500



Cable Installation Data			
Cable Type	Max Pulling Tension	Minimum Bending Radius (On Route)	Minimum Duct Size (ID)
25mm <sup>2</sup> /35mm <sup>2</sup> Al Split Concentric 1Ph	Manual	125mm	38mm
35mm <sup>2</sup> Al Split Concentric 3Ph	Manual	210mm	50mm
95mm <sup>2</sup> Al Waveform 3c	3000N	550mm	125mm
185mm <sup>2</sup> Al Waveform 3c	7000N	700mm	125mm
300mm <sup>2</sup> Al Waveform 3c	7000N	850mm	125mm
185mm <sup>2</sup> Al XLPE Triplex 11kV	16300N	700mm	125mm



Electrical As Laid Symbols & Abbreviations		
Symbol	Name & Abbreviation	Colour Variations
—	Mains Cable	Red - HV
---	Existing Mains Cable	Red - HV
----	Abandoned Mains Cable	Red - HV
	Mains Breech Joint (MBJ)	Red - HV
—●—	Mains Straight Joint (STJ)	Red - HV
—○—	Service Joint (SJ)	-
(M)	Electrical Meter	-
---	Cable Duct	-
---	Datum Line	-
●	Point of Connection (POC)	Red - HV Magenta - DNO/IDNO (Drawing dependent)
●	Pot End (PE)	Red - HV
●	Service Pot End (SPE)	-
○	2 Way Link Box (LB)	Magenta - DNO/IDNO (Drawing dependent)
○	4 Way Link Box (LB)	Magenta - DNO/IDNO (Drawing dependent)
FP	Feeder Pillar (FP)	-
+	Streetlight (SL/C)	-
XXXX	Building Entry (BE)	-
↖	Line of Sight	-

Please note that as of 02/10/2020 All NEW UKPS claims to the IDNO network will include the cable size applicable to newly installed mains cable. This will be reflected in the revision note.

- General Notes:**
- UKPN Ref:
    - HV POC 1: 8200027169/QID 3200019811
    - HV POC 2: 8600010522 /QID 3600003054
  - ESPE Ref:
    - POC1: ESPE021747-1
    - POC2: ESPE021747-2
  - Substation Type: Freestanding/Brick Built
  - For Project Scope and Material Specifications, please refer to UKP6896 - Project Information Document IDNO.
- Please see DWG300 - Sheet 7/7 for:
- Trench Cross Sections
  - Cable Data

REV	AMENDMENT	DATE	BY
0	First Issue	29/10/20	CEO
	<ul style="list-style-type: none"> <li>Mains cable route updated</li> <li>Cable sizes added to drawing</li> <li>Mains joint positions clarified and dimensioned</li> </ul>		

**UKPS**  
UK POWER SOLUTIONS  
The Utility Connection Company

River View House, Bonds Mill Estate, Bristol Road  
Stonehouse, Gloucestershire GL10 3RF

4th Floor, West World, West Gate  
Ealing, London W5 1DT

www.ukpowersolutions.co.uk

Client: HRMC Ltd.

Project: Linmere

Title: As Laid Plan - IDNO

Design & Planning Engineer Pelin Morgan	Contact No. 08452 577 105
Project Manager Brad Hogan	Contact No. 07814 516 036

Drawn By: CEO    Checked By: --    Date: 29/10/2020

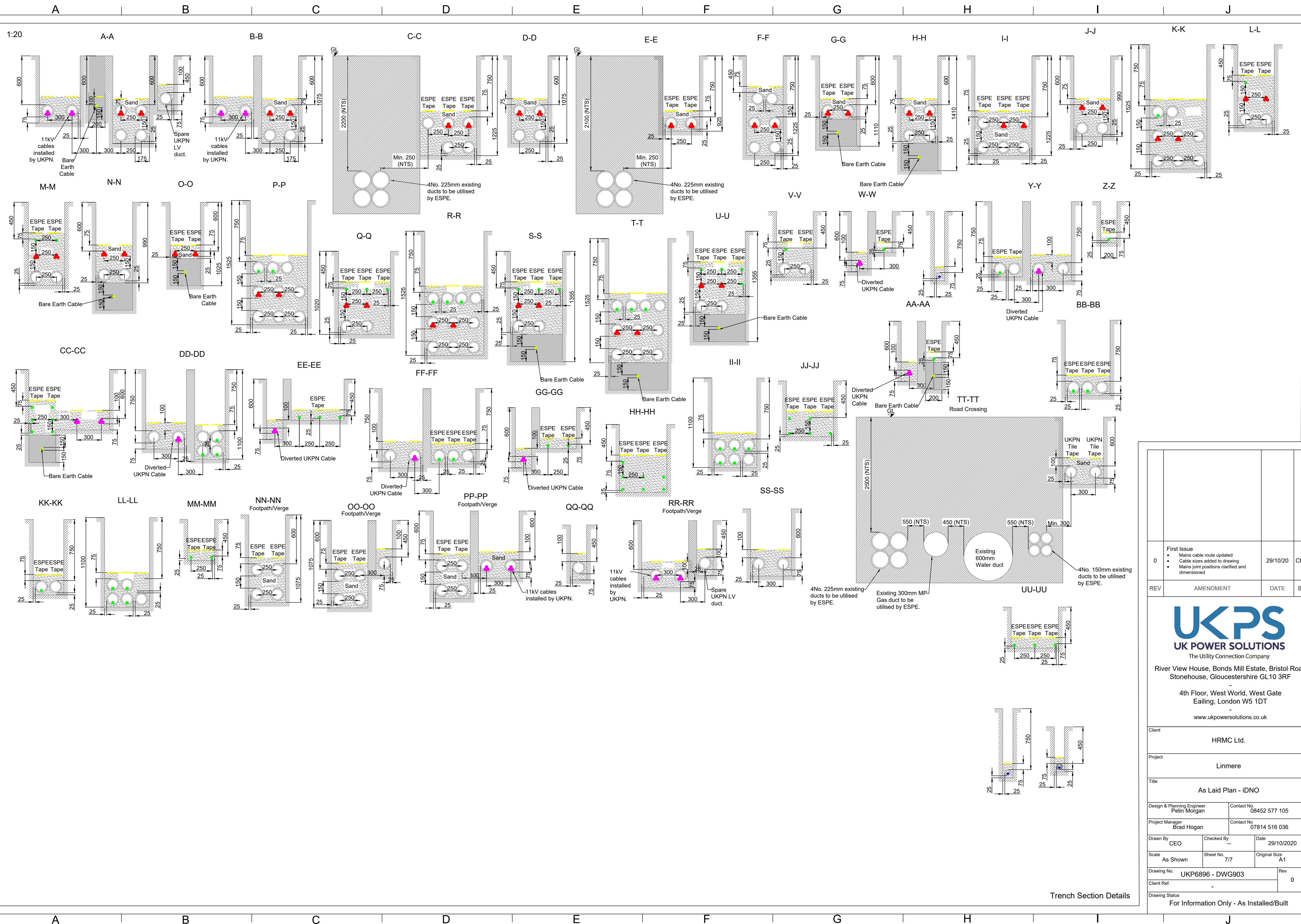
Scale: As Shown    Sheet No: 6/7    Original Size: A1

Drawing No: UKP6896 - DWG903    Rev: 0

Client Ref: -

Drawing Status: For Information - As Installed/Built

Site Layout & Cable Routes - Continuous

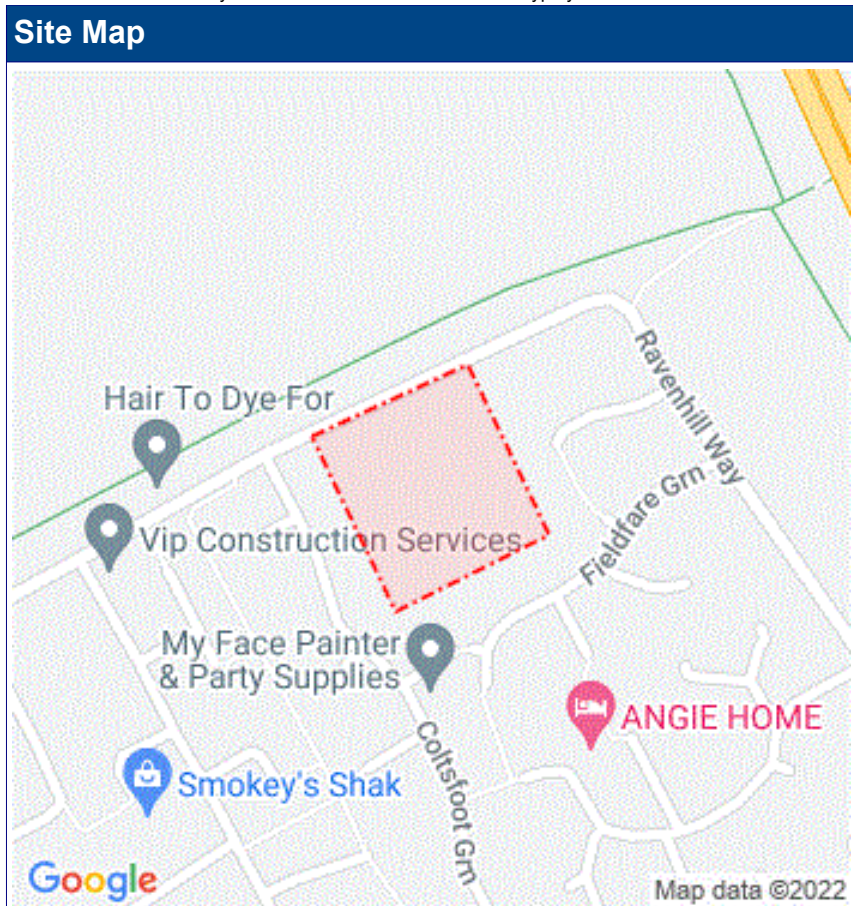


0	First Issue	29/10/20	CEO
REV	AMENDMENT	DATE	BY
0	First Issue	29/10/20	CEO
1	Mains cable route updated		
2	Cable sizes added to drawing		
3	Mains joint positions clarified and dimensioned		
<p>The Utility Connection Company</p> <p>River View House, Bonds Mill Estate, Bristol Road Stonehouse, Gloucestershire GL10 3RF</p> <p>4th Floor, West World, West Gate Ealing, London W5 1DT</p> <p>www.ukpowersolutions.co.uk</p>			
Client	HRMC Ltd.		
Project	Linmere		
Title	As Laid Plan - IDNO		
Design & Planning Engineer	Pelín Morgan	Contact No.	08452 577 105
Project Manager	Brad Hogan	Contact No.	07814 516 036
Drawn By	CEO	Checked By	--
Scale	As Shown	Sheet No.	7/7
Original Size	A1		
Drawing No.	UKP6896 - DWG903		Rev
Client Ref.	-		0
Drawing Status	For Information Only - As Installed/Built		

Enquirer			
Name	Miss Lauren Wenham	Phone	01604 781877
Company	Soiltechnics Ltd	Mobile	Not Supplied
Address	Cedar Barn White Lodge Walgrave Northamptonshire NN6 9PY		
Email	admin@soiltechnics.net		

Enquiry Details			
Scheme/Reference	STU5850		
Enquiry type	Planned Works	Work category	Development Projects
Start date	11/10/2022	Work type	Commercial/industrial
End date	11/10/2022	Site size	12420 metres square
Searched location	XY= 504392, 224148	Work type buffer*	75 metres
Confirmed location	504324 224145		
Site Contact Name	Not Supplied	Site Phone No	Not Supplied
Description of Works			

\* The WORK TYPE BUFFER is a distance added to your search area based on the Work type you have chosen.



## Asset Owners

**Terms and Conditions.** Please note that this enquiry is subject always to our standard terms and conditions available at [www.linesearchbeforeudig.co.uk](http://www.linesearchbeforeudig.co.uk) ("Terms of Use") and the disclaimer at the end of this document. Please note that in the event of any conflict or ambiguity between the terms of this Enquiry Confirmation and the Terms of Use, the Terms of Use shall take precedence.

**Notes.** Please ensure your contact details are correct and up to date on the system in case the LSBUD Members need to contact you.

**Validity and search criteria.** The results of this enquiry are based on the confirmed information you entered and are valid only as at the date of the enquiry. It is your responsibility to ensure that the Enquiry Details are correct, and LineSearchbeforeUdig accepts no responsibility for any errors or omissions in the Enquiry Details or any consequences thereof. LSBUD Members update their asset information on a regular basis so you are advised to consider this when undertaking any works. It is your responsibility to choose the period of time after which you need to resubmit any enquiry but the maximum time (after which your enquiry will no longer be dealt with by the LSBUD Helpdesk and LSBUD Members) is 28 days. If any details of the enquiry change, particularly including, but not limited to, the location of the work, then a further enquiry must be made.

**Asset Owners & Responses.** Please note the enquiry results include the following:

1. "LSBUD Members" who are asset owners who have registered their assets on the LSBUD service.
2. "Non LSBUD Members" are asset owners who have not registered their assets on the LSBUD service but LSBUD is aware of their existence. Please note that there could be other asset owners within your search area.

Below are three lists of asset owners:

1. **LSBUD Members who have assets registered within your search area. ("Affected")**
  - a. **These LSBUD Members will either:**
    - i. **Ask for further information ("Email Additional Info" noted in status).** The additional information includes: Site contact name and number, Location plan, Detailed plan (minimum scale 1:2500), Cross sectional drawings (if available), Work Specification.
    - ii. **Respond directly to you ("Await Response").** In this response they may either send plans directly to you or ask for further information before being able to do so, particularly if any payments or authorisations are required.
2. **LSBUD Members who do not have assets registered within your search area. ("Not Affected")**
3. **Non LSBUD Members who may have assets within your search area.** Please note that this list is not exhaustive and all details are provided as a guide only. It is your responsibility to identify and consult with all asset owners before proceeding.

**LSBUD Members who have assets registered on the LSBUD service within the vicinity of your search area.**

### List of affected LSBUD members

Asset Owner	Phone/Email	Emergency Only	Status
Cadent Gas	0800688588	0800111999	Await response
ESP Utilities Group	01372227560	01372227560	Await response
National Grid Electricity Transmission	08000014282	0800404090	Await response
UK Power Networks	08000565866	08000565866	Await response

**LSBUD Members who do not have assets registered on the LSBUD service within the vicinity of your search area. Please be aware that LSBUD Members make regular changes to their assets and this list may vary for new enquiries in the same area.**

### List of not affected LSBUD members

Angus Energy	AWE Pipeline	B & D Energy Limited
Balfour Beatty Investments Limited	BOC Limited (A Member of the Linde Group)	Box Broadband
BP Exploration Operating Company Limited	BPA	Carrington Gas Pipeline
CATS Pipeline c/o Wood Group PSN	Cemex	Centrica Storage Ltd
CNG Services Ltd	Concept Solutions People Ltd	ConocoPhillips (UK) Teesside Operator Ltd
D.S.Smith	Diamond Transmission Corporation	DIO (MOD Abandoned Pipelines)
DIO (MOD Live Pipelines)	E.ON UK CHP Limited	EirGrid
Eleclink Limited	Electricity North West Limited	Energy Assets Networks
ENI & Himor c/o Penspen Ltd	EnQuest NNS Limited	EP Langage Limited
ESSAR	Esso Petroleum Company Limited	euNetworks Fiber UK Ltd
EXA Infrastructure	Exolum Pipeline System	Fulcrum Electricity Assets Limited
Fulcrum Pipelines Limited	Gamma	Gas Networks Ireland (UK)
Gateshead Energy Company	Gigaclear Ltd	Harbour Energy
Heathrow Airport LTD	Humbly Grove Energy	IGas Energy
INEOS FPS Pipelines	INEOS Manufacturing (Scotland and TSEP)	INOVYN ChlorVinyls Limited
INOVYN Enterprises Limited	Intergen (Coryton Energy or Spalding Energy)	Jurassic Fibre Ltd
Last Mile	Mainline Pipelines Limited	Manchester Jetline Limited
Manx Cable Company	Marchwood Power Ltd (Gas Pipeline)	Melbourn Solar Limited
Moray East Offshore Windfarm	Murphy Utility Assets	National Grid Electricity Distribution
National Grid Gas Transmission	Neos Networks	Northumbrian Water Group
NPower CHP Pipelines	NTT Global Data Centers EMEA UK Ltd	NYnet Ltd
Ogi	Oikos Storage Limited	Ørsted
Palm Paper Ltd	Perenco UK Limited (Purbeck Southampton Pipeline)	Petroineos
Phillips 66	Portsmouth Water	Premier Transmission Ltd (SNIP)
Redundant Pipelines - LPDA	RWE - Great Yarmouth Pipeline (Bacton to Great Yarmouth Power Station)	RWEnpower (Little Barford and South Haven)
SABIC UK Petrochemicals	SAS Utility Services Ltd	Scottish and Southern Electricity Networks
Scottish Power Generation	Seabank Power Ltd	SES Water

SGN	Shell	Shell NOP
SP Energy Networks	Squire Energy Networks	SSE Generation Ltd
SSE Transmission	SSE Utility Solutions Limited	Tata Communications (c/o JSM Construction Ltd)
Total Colnbrook Pipelines	Total Finaline Pipelines	Transmission Capital
Uniper UK Ltd	University of Cambridge Granta Backbone Network	Vattenfall
Veolia ES SELCHP Limited	Veolia ES Sheffield Ltd	Voneus Limited
VPI Power Limited	Wales and West Utilities	West of Duddon Sands Transmission Ltd
Westminster City Council	Zayo Group UK Ltd c/o JSM Group Ltd	

**The following Non-LSBUD Members may have assets in your search area. It is YOUR RESPONSIBILITY to contact them before proceeding. Please be aware this list is not exhaustive and it is your responsibility to identify and contact all asset owners within your search area.**

Non-LSBUD members (Asset owners not registered on LSBUD)			
Asset Owner	Preferred contact method	Phone	Status
Affinity Water	maps@affinitywater.co.uk	03453572428	Not Notified
Anglian Water	http://www.digdat.co.uk	01480323891	Not Notified
BT	https://www.swns.bt.com/pls/mbe/welcome.home	08000232023	Not Notified
CityFibre	asset.team@cityfibre.com	033 3150 7282	Not Notified
Colt	plantenquiries@catelecomuk.com	01227768427	Not Notified
Equans	nrswa.uk@equans.com	0800 130 3600	Not Notified
GTC	https://pe.gtc-uk.co.uk/PlantEnqMembership	01359240363	Not Notified
Lumen Technologies	plantenquiries@instalcom.co.uk	02087314613	Not Notified
Luton Borough Council	streetlight@luton.gov.uk	01582546172	Not Notified
Mobile Broadband Network Limited	mbnl.plant.enquiries@turntown.com	01212 621 100	Not Notified
Sky UK Limited	nrswa@sky.uk	02070323234	Not Notified
Sota	SOTA.plantenquiries@instalcom.co.uk		Not Notified
Thames Water	http://www.digdat.co.uk	08450709145	Not Notified
Utility assets Ltd	assetrecords@utilityassets.co.uk		Not Notified
Verizon Business	osp-team@uk.verizonbusiness.com	01293611736	Not Notified
Virgin Media	http://www.digdat.co.uk	08708883116	Not Notified
Vodafone	osm.enquiries@atkinglobal.com	01454662881	Not Notified

#### Disclaimer

Please refer to LineasearchbeforeUdig's Terms of Use for full terms of use available at [www.lineasearchbeforeudig.co.uk](http://www.lineasearchbeforeudig.co.uk)

The results of this Enquiry are personal to the Enquirer and shall not be shared with or relied upon by any other party. The asset information on which the Enquiry results are based has been provided by LSBUD Members, therefore LineasearchbeforeUdig will provide no guarantee that such information is accurate or reliable nor does it monitor such asset information for accuracy and reliability going forward. There may also be asset owners which do not participate in the enquiry service operated by LineasearchbeforeUdig, including but not exclusively those set out above. Therefore, LineasearchbeforeUdig cannot make any representation or give any guarantee or warranty as to the completeness of the information contained in the enquiry results or accept any responsibility for the accuracy of the mapping images used. LineasearchbeforeUdig and its employees, agents and consultants accept no liability (save that nothing in this Enquiry Confirmation excludes or limits our liability for death or personal injury arising from our negligence, or our fraud or fraudulent misrepresentation, or any other liability that cannot be excluded or limited by English law) arising in respect thereof or in any other way for errors or omissions including responsibility to any person by reason of negligence.

Our Ref: 27202707 STU5850

Monday, 10 October 2022

Lauren Wenham  
Cedar Barn White Lodge

Northamptonshire  
NN6 9PY

National Grid House  
Warwick Technology Park  
Gallows Hill, Warwick  
CV34 6DA

**Electricity Emergency Number:**  
**0800 40 40 90\***  
\*Available 24 hours, 7 days/week.  
Calls may be recorded and monitored.  
[www.nationalgrid.com](http://www.nationalgrid.com)

Asset Protection  
Gas Transmission  
National Grid  
Warwick  
Email: [assetprotection@nationalgrid.com](mailto:assetprotection@nationalgrid.com)

## National Grid Electricity – No Assets Affected

Dear Sir/ Madam,

An assessment has been carried out with respect to NGET apparatus and the proposed work location. Based on the search area entered in the LSBUD system for assessment the search area has been found to not affect any NGET apparatus.

Please note this response and any attached map(s) are valid for 28 days

Yours sincerely

**Asset Protection Team**



## Your Responsibilities and Obligations

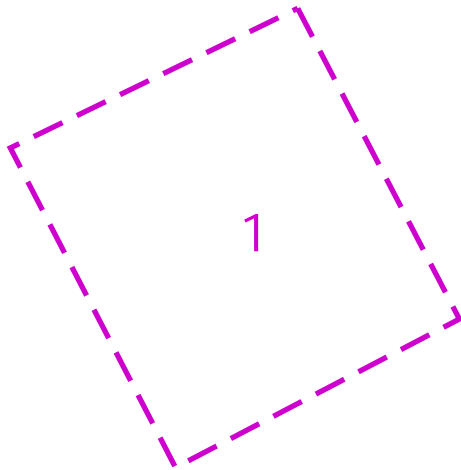
It is your responsibility to ensure that the information you have submitted is accurate and that all relevant documents including links are provided to all persons (either direct labour or contractors) working for you near National Grid Electricity Transmission plc's apparatus, as legally required including under the Construction (Design and Management) Regulations 2015.

The assessment solely relates to the physical apparatus of National Grid Electricity Transmission plc (NGET)  
It does **NOT** cover:

- Apparatus owned by other people or organisations, e.g., Cadent, other gas distribution operators, local electricity companies, other utilities, landowners etc
- Apparatus owned by National Grid Gas plc.
- NGET's legal rights and interests (such as those contained in easements or wayleaves) in or concerning the land, which restrict activity in proximity to NGET's assets in private land. You must obtain details of any such restrictions from the landowner in the first instance and/or from HM Land Registry and/or you should seek legal advice. If in doubt, contact Asset Protection.

It is **YOUR** responsibility to consider whether any of the items or factors listed above may be present or relevant and if they could be affected by your proposed activities.

NGET or its agents, servants or contractors do not accept any liability for any losses arising under or in connection with this information. This limit on liability applies to all and any claims in contract, tort (including negligence), misrepresentation (excluding fraudulent misrepresentation), breach of statutory duty or otherwise. This limit on liability does not exclude or restrict liability, which is prohibited by law, nor does it supersede the express terms of any related agreements.



Warning: PDF designed for A4 colour print only with no page scaling

**nationalgrid**



**EXTREME CAUTION - HIGH VOLTAGE  
\*\*RISK OF DEATH OR SERIOUS INJURY\*\***

- Dig Sites
- Area: Line:
- Underground Cables
- Overhead Lines
- Fibre Cables

**NationalGrid House**  
Warwick Technology Park  
Gallows Hill  
Warwick  
CV34 6DA

AssetProtection@NationalGrid.com

Date Requested: 10/10/2022  
Job Reference: 27202707  
Site Location: 504324 224145  
Requested by: Miss Lauren Wenham  
Your Scheme/Reference: STU5850

**IMPORTANT NOTICES**

This plan shows those pipes owned by National Grid Electricity Transmission plc in its role as a Licensed Electricity Transporter (ET). Electricity cables owned by other ETs, or otherwise privately owned, may be present in this area. Information with regards to such cables should be obtained from the relevant owners. The information shown on this plan is given without warranty, the accuracy thereof cannot be guaranteed. Ancillary equipment such as cooling systems and communication cables are not shown but their presence should be anticipated. No liability of any kind whatsoever is accepted by National Grid Electricity Transmission plc or their agents, servants or contractors for any error or omission. Safe digging practices, in accordance with HS(G)47, must be used to verify and establish the actual position of cables and other apparatus on site before any mechanical plant is used. It is your responsibility to ensure that this information is provided to all persons (either direct labour or contractors) working for you on or near electricity apparatus. The information included on this plan should not be referred to beyond a period of 28 days from the date of issue.

**National Grid Electricity Emergency Number: 0800 40 40 90**

Available 24 hours, 7 days/week. Calls may be recorded and monitored

Scale: 1:2500 (When plotted at A4)

# ENQUIRY SUMMARY

## Received Date

10/10/2022 15:04

## Work Start Date

11/10/2022

## Your Reference

STU5850

## Location

Centre Point: 504324 224145

X Extent:

Y Extent:

Postcode: LU4 0YB

## Map Options

Paper Size: A4

Orientation: PORTRAIT

Scale: 1:2500

Real World Extents: 148m x 152m

## Enquirer Details

Organisation Name: Soiltechnics Ltd

Contact Name: Lauren Wenham

Email Address: admin@soiltechnics.net

Telephone: 01604 781877

Address: Cedar Barn White Lodge, , Northamptonshire, NN6 9PY

## Enquiry Type

Planned Works

## Activity Type

Development Projects

## Work Types

Commercial/industrial

## Notes/Works Description (if supplied)

## Site Contact Name (if supplied)

## Site Contact Number (if supplied)

## **Appendix C    Envirocheck Report**

## Envirocheck<sup>®</sup> Report:

### Datasheet

#### Order Details:

**Order Number:**

306462243\_1\_1

**Customer Reference:**

STU5850

**National Grid Reference:**

504320, 224140

**Slice:**

A

**Site Area (Ha):**

1.24

**Search Buffer (m):**

1000

#### Site Details:

Kestrel Way

Luton

LU4 0XX

#### Client Details:

Ms S Ltd

Soiltechnics

Cedar Barn

White Lodge

Walgrave

Northampton

NN6 9PY

Report Section	Page Number
Summary	-
Agency & Hydrological	1
Waste	14
Hazardous Substances	-
Geological	16
Industrial Land Use	20
Sensitive Land Use	29
Data Currency	30
Data Suppliers	37
Useful Contacts	38

#### Introduction

The Environment Act 1995 has made site sensitivity a key issue, as the legislation pays as much attention to the pathways by which contamination could spread, and to the vulnerable targets of contamination, as it does the potential sources of contamination. For this reason, Landmark's Site Sensitivity maps and Datasheet(s) place great emphasis on statutory data provided by the Environment Agency/Natural Resources Wales and the Scottish Environment Protection Agency; it also incorporates data from Natural England (and the Scottish and Welsh equivalents) and Local Authorities; and highlights hydrogeological features required by environmental and geotechnical consultants. It does not include any information concerning past uses of land. The datasheet is produced by querying the Landmark database to a distance defined by the client from a site boundary provided by the client. In this datasheet the National Grid References (NGRs) are rounded to the nearest 10m in accordance with Landmark's agreements with a number of Data Suppliers.

#### Copyright Notice

© Landmark Information Group Limited 2023. The Copyright on the information and data and its format as contained in this Envirocheck® Report ("Report") is the property of Landmark Information Group Limited ("Landmark") and several other Data Providers, including (but not limited to) Ordnance Survey, British Geological Survey, the Environment Agency/Natural Resources Wales and Natural England, and must not be reproduced in whole or in part by photocopying or any other method. The Report is supplied under Landmark's Terms and Conditions accepted by the Customer. A copy of Landmark's Terms and Conditions can be found with the Index Map for this report. Additional copies of the Report may be obtained from Landmark, subject to Landmark's charges in force from time to time. The Copyright, design rights and any other intellectual rights shall remain the exclusive property of Landmark and/or other Data providers, whose Copyright material has been included in this Report. © Environment Agency & United Kingdom Research and Innovation 2023. © Natural Resources Wales & United Kingdom Research and Innovation 2023.

#### Natural England Copyright Notice

Site of Special Scientific Interest, National Nature Reserve, Ramsar, Special Protection Area, Special Conservation Area, Marine Nature Reserve data (derived from Ordnance Survey 1:10000 raster) is provided by, and used with the permission of, Natural England who retain the copyright and Intellectual Property Rights for the data.

#### Scottish Natural Heritage Copyright

Contains SNH information licensed under the Open Government Licence v3.0.

#### Ove Arup Copyright Notice

The Mining Instability data was obtained on licence from Ove Arup & Partners Limited (for further information, contact mining.review@arup.com). No reproduction or further use of such Data is to be made without the prior written consent of Ove Arup & Partners Limited. The supplied Mining Instability data is derived from publicly available records and other third party sources and neither Ove Arup & Partners nor Landmark warrant the accuracy or completeness of such information or data.

#### Stantec Copyright Notice

The cavity data presented has been extracted from the PBA (now Stantec UK Ltd) enhanced version of the original DEFRA national cavity databases. Stantec UK Ltd retain the copyright & intellectual property rights in the data. Whilst all reasonable efforts are made to check that the information contained in the cavity databases is accurate we do not warrant that the data is complete or error free. The information is based upon our own researches and those collated from a number of external sources and is continually being augmented and updated by Stantec UK Ltd. In no event shall Stantec UK Ltd or Landmark be liable for any loss or damage including, without limitation, indirect or consequential loss or damage arising from the use of this data.

#### Radon Potential dataset Copyright Notice

Information supplied from a joint dataset compiled by The British Geological Survey and Public Health England.

#### Natural Resources Wales Copyright Notice

Contains Natural Resources Wales information © Natural Resources Wales and Database Right. All rights Reserved. Contains Ordnance Survey Data. Ordnance Survey Licence number 100019741. Crown Copyright and Database Right. Contains Natural Resources Wales information © Natural Resources Wales and Database Right. All rights Reserved. Some features of this information are based on digital spatial data licensed from the Centre for Ecology & Hydrology © NERC (CEH). Defra, Met Office and DARD Rivers Agency © Crown copyright. © Cranfield University. © James Hutton Institute. Contains OS data © Crown copyright and database right 2023. Land & Property Services © Crown copyright and database right.

#### Report Version v53.0

Data Type	Page Number	On Site	0 to 250m	251 to 500m	501 to 1000m (*up to 2000m)
<b>Agency &amp; Hydrological</b>					
BGS Groundwater Flooding Susceptibility	pg 1	Yes		Yes	n/a
Contaminated Land Register Entries and Notices					
Discharge Consents	pg 1			2	3
Prosecutions Relating to Controlled Waters			n/a	n/a	n/a
Enforcement and Prohibition Notices					
Integrated Pollution Controls					
Integrated Pollution Prevention And Control					
Local Authority Integrated Pollution Prevention And Control					
Local Authority Pollution Prevention and Controls	pg 2				1
Local Authority Pollution Prevention and Control Enforcements					
Nearest Surface Water Feature	pg 2		Yes		
Pollution Incidents to Controlled Waters	pg 2			4	25
Prosecutions Relating to Authorised Processes					
Registered Radioactive Substances					
River Quality					
River Quality Biology Sampling Points					
River Quality Chemistry Sampling Points					
Substantiated Pollution Incident Register	pg 7				3
Water Abstractions	pg 7				1
Water Industry Act Referrals					
Groundwater Vulnerability Map	pg 8	Yes	n/a	n/a	n/a
Groundwater Vulnerability - Soluble Rock Risk	pg 8	1	n/a	n/a	n/a
Groundwater Vulnerability - Local Information			n/a	n/a	n/a
Bedrock Aquifer Designations	pg 8	Yes	n/a	n/a	n/a
Superficial Aquifer Designations	pg 8	Yes	n/a	n/a	n/a
Source Protection Zones	pg 8	1		1	
Extreme Flooding from Rivers or Sea without Defences	pg 9		Yes	n/a	n/a
Flooding from Rivers or Sea without Defences				n/a	n/a
Areas Benefiting from Flood Defences				n/a	n/a
Flood Water Storage Areas				n/a	n/a
Flood Defences				n/a	n/a
OS Water Network Lines	pg 9		1	4	35

Data Type	Page Number	On Site	0 to 250m	251 to 500m	501 to 1000m (*up to 2000m)
<b>Waste</b>					
BGS Recorded Landfill Sites					
Historical Landfill Sites					
Integrated Pollution Control Registered Waste Sites					
Licensed Waste Management Facilities (Landfill Boundaries)					
Licensed Waste Management Facilities (Locations)	pg 14				4
Local Authority Landfill Coverage	pg 14	1	n/a	n/a	n/a
Local Authority Recorded Landfill Sites					
Potentially Infilled Land (Non-Water)	pg 15			1	
Potentially Infilled Land (Water)	pg 15				1
Registered Landfill Sites					
Registered Waste Transfer Sites					
Registered Waste Treatment or Disposal Sites	pg 15				1
<b>Hazardous Substances</b>					
Control of Major Accident Hazards Sites (COMAH)					
Explosive Sites					
Notification of Installations Handling Hazardous Substances (NIHHS)					
Planning Hazardous Substance Consents					
Planning Hazardous Substance Enforcements					



Data Type	Page Number	On Site	0 to 250m	251 to 500m	501 to 1000m (*up to 2000m)
<b>Geological</b>					
BGS 1:625,000 Solid Geology	pg 16	Yes	n/a	n/a	n/a
BGS Estimated Soil Chemistry	pg 16	Yes	Yes	Yes	Yes
BGS Recorded Mineral Sites					
BGS Urban Soil Chemistry					
BGS Urban Soil Chemistry Averages					
CBSCB Compensation District			n/a	n/a	n/a
Coal Mining Affected Areas			n/a	n/a	n/a
Mining Instability			n/a	n/a	n/a
Man-Made Mining Cavities					
Natural Cavities					
Non Coal Mining Areas of Great Britain	pg 18	Yes		n/a	n/a
Potential for Collapsible Ground Stability Hazards	pg 18	Yes		n/a	n/a
Potential for Compressible Ground Stability Hazards	pg 18		Yes	n/a	n/a
Potential for Ground Dissolution Stability Hazards	pg 18	Yes	Yes	n/a	n/a
Potential for Landslide Ground Stability Hazards	pg 18	Yes	Yes	n/a	n/a
Potential for Running Sand Ground Stability Hazards	pg 18	Yes	Yes	n/a	n/a
Potential for Shrinking or Swelling Clay Ground Stability Hazards	pg 19	Yes		n/a	n/a
Radon Potential - Radon Affected Areas	pg 19	Yes	n/a	n/a	n/a
Radon Potential - Radon Protection Measures			n/a	n/a	n/a
<b>Industrial Land Use</b>					
Contemporary Trade Directory Entries	pg 20		3	2	55
Fuel Station Entries					
Points of Interest - Commercial Services	pg 25				28
Points of Interest - Education and Health					
Points of Interest - Manufacturing and Production	pg 27				3
Points of Interest - Public Infrastructure	pg 27		1		2
Points of Interest - Recreational and Environmental	pg 27				10
Gas Pipelines					
Underground Electrical Cables					

<b>Data Type</b>	<b>Page Number</b>	<b>On Site</b>	<b>0 to 250m</b>	<b>251 to 500m</b>	<b>501 to 1000m (*up to 2000m)</b>
<b>Sensitive Land Use</b>					
Ancient Woodland					
Areas of Adopted Green Belt	pg 29		2		
Areas of Unadopted Green Belt					
Areas of Outstanding Natural Beauty					
Environmentally Sensitive Areas					
Forest Parks					
Local Nature Reserves					
Marine Nature Reserves					
National Nature Reserves					
National Parks					
Nitrate Sensitive Areas					
Nitrate Vulnerable Zones	pg 29	2			
Ramsar Sites					
Sites of Special Scientific Interest					
Special Areas of Conservation					
Special Protection Areas					
World Heritage Sites					

Map ID	Details	Quadrant Reference (Compass Direction)	Estimated Distance From Site	Contact	NGR
	<b>BGS Groundwater Flooding Susceptibility</b> Flooding Type: Limited Potential for Groundwater Flooding to Occur	A13NW (W)	0	1	504323 224141
	<b>BGS Groundwater Flooding Susceptibility</b> Flooding Type: Limited Potential for Groundwater Flooding to Occur	A12NE (NW)	393	1	503900 224350
1	<b>Discharge Consents</b> Operator: Tsl Limited Property Type: CONSTRUCTION OF BUILDINGS Location: Lidl Distribution Centre Developmen Woodside Link . Chalton Central Bedfordshire Lu4 0ud Authority: Environment Agency, Thames Region Catchment Area: Not Supplied Reference: Eprub3299ws Permit Version: 1 Effective Date: 8th July 2021 Issued Date: 8th July 2021 Revocation Date: Not Supplied Discharge Type: Trade Effluent Discharge-Site Drainage Discharge: Freshwater Stream/River Environment: Receiving Water: Houghton Brook <b>Status: New issued under EPR 2010</b> Positional Accuracy: Located by supplier to within 10m	A18SE (N)	312	2	504334 224526
2	<b>Discharge Consents</b> Operator: Wimpey Homes Holdings Ltd. Property Type: DOMESTIC PROPERTY (MULTIPLE) (INCL FARM HOUSES) Location: Toddington Road, Luton, Beds Authority: Environment Agency, Thames Region Catchment Area: Not Supplied Reference: Ctwc.0640 Permit Version: 1 Effective Date: 12th February 1986 Issued Date: 12th February 1986 Revocation Date: 12th March 1992 Discharge Type: Discharge Of Other Matter-Surface Water Discharge: Freshwater Stream/River Environment: Receiving Water: Houghton Brook <b>Status: Authorisation revoked</b> Positional Accuracy: Located by supplier to within 10m	A14NW (NE)	427	2	504750 224360
3	<b>Discharge Consents</b> Operator: Aldwyck Housing Group Limited Property Type: DOMESTIC PROPERTY (MULTIPLE) (INCL FARM HOUSES) Location: Land Off Leagrave High Street, Luton, Bedfordshire Authority: Environment Agency, Thames Region Catchment Area: Not Given Reference: CTWC.2784 Permit Version: 1 Effective Date: 5th September 1988 Issued Date: 5th September 1988 Revocation Date: 17th September 2012 Discharge Type: Discharge Of Other Matter-Surface Water Discharge: Freshwater Stream/River Environment: Receiving Water: Lewsey Brook <b>Status: Revoked under EPR 2010</b> Positional Accuracy: Located by supplier to within 100m	A9NW (SE)	654	2	504800 223600
4	<b>Discharge Consents</b> Operator: Anglian Water Services Ltd. Property Type: STORM TANK/CSO ON SEWERAGE NETWORK (WATER COMPANY) Location: Hillyfields Combined Sewer Overflow, Dunstable, , Befordshire Authority: Environment Agency, Thames Region Catchment Area: Not Supplied Reference: Canm.0119 Permit Version: 1 Effective Date: 8th June 2000 Issued Date: 8th June 2000 Revocation Date: 14th March 2019 Discharge Type: Public Sewage: Storm Sewage Overflow Discharge: Freshwater Stream/River Environment: Receiving Water: Lewsey Brook <b>Status: Surrendered under EPR 2010</b> Positional Accuracy: Located by supplier to within 10m	A8SE (S)	698	2	504360 223370

Map ID	Details	Quadrant Reference (Compass Direction)	Estimated Distance From Site	Contact	NGR
5	<p><b>Discharge Consents</b></p> <p>Operator: Beazer Urban Developments(Bedford)Ltd  Property Type: Undefined Or Other  Location: Ackworth Crescent, Luton, Bedfordshire  Authority: Environment Agency, Thames Region  Catchment Area: Not Supplied  Reference: Ctwc.3414  Permit Version: 1  Effective Date: 16th June 1989  Issued Date: 16th June 1989  Revocation Date: 21st February 1991  Discharge Type: Discharge Of Other Matter-Surface Water  Discharge: Freshwater Stream/River  Environment:  Receiving Water: Lewsey Brook  <b>Status: Authorisation revoked</b>  Positional Accuracy: Located by supplier to within 10m</p>	A14NE (E)	913	2	505300 224250
6	<p><b>Local Authority Pollution Prevention and Controls</b></p> <p>Name: Cachet Dry Cleaners And Launderette  Location: 17 The Green, Luton, Lu4 9pg  Authority: Luton Borough Council, Environmental Health Department  Permit Reference: Not Supplied  Dated: Not Supplied  Process Type: Local Authority Pollution Prevention and Control  Description: PG6/46 Dry cleaning  <b>Status: Permitted</b>  Positional Accuracy: Manually positioned to the address or location</p>	A14NE (E)	871	3	505267 224159
	<p><b>Nearest Surface Water Feature</b></p>	A13NE (N)	200	-	504395 224408
7	<p><b>Pollution Incidents to Controlled Waters</b></p> <p>Property Type: Not Given  Location: Station Road  Authority: Environment Agency, Thames Region  Pollutant: Unknown Sewage  Note: Confirmed As A Pollution Incident  Incident Date: Not Supplied  Incident Reference: N1910015  Catchment Area: Not Given  Receiving Water: Not Given  Cause of Incident: Not Given  Incident Severity: Category 2 - Significant Incident  Positional Accuracy: Located by supplier to within 100m</p>	A14SW (E)	303	2	504700 224100
8	<p><b>Pollution Incidents to Controlled Waters</b></p> <p>Property Type: Not Given  Location: LUTON  Authority: Environment Agency, Thames Region  Pollutant: Oils - Unknown  Note: Confirmed As A Pollution Incident  Incident Date: 5th November 1991  Incident Reference: NE910537  Catchment Area: Not Given  Receiving Water: Not Given  Cause of Incident: Not Given  Incident Severity: Category 3 - Minor Incident  Positional Accuracy: Located by supplier to within 100m</p>	A19SW (NE)	456	2	504700 224500
9	<p><b>Pollution Incidents to Controlled Waters</b></p> <p>Property Type: Not Given  Location: Ravenhill Way, LUTON  Authority: Environment Agency, Thames Region  Pollutant: Unknown Sewage  Note: Confirmed As A Pollution Incident  Incident Date: 7th June 1992  Incident Reference: NE920289  Catchment Area: Not Given  Receiving Water: Not Given  Cause of Incident: Not Given  Incident Severity: Category 3 - Minor Incident  Positional Accuracy: Located by supplier to within 100m</p>	A12SE (W)	480	2	503800 224000

Map ID	Details	Quadrant Reference (Compass Direction)	Estimated Distance From Site	Contact	NGR
10	<p><b>Pollution Incidents to Controlled Waters</b></p> <p>Property Type: Not Given                      Location: LUTON                      Authority: Environment Agency, Thames Region                      Pollutant: Oils - Unknown                      Note: Confirmed As A Pollution Incident                      Incident Date: 11th August 1994                      Incident Reference: NE940675                      Catchment Area: Not Given                      Receiving Water: Not Given                      Cause of Incident: Not Given                      Incident Severity: Category 3 - Minor Incident                      Positional Accuracy: Located by supplier to within 100m</p>	A14NW (NE)	490	2	504800 224400
11	<p><b>Pollution Incidents to Controlled Waters</b></p> <p>Property Type: Not Given                      Location: Chariton Cross Farm, LUTON                      Authority: Environment Agency, Thames Region                      Pollutant: Storm Sewage                      Note: Not Supplied                      Incident Date: 31st October 1997                      Incident Reference: THNE1997030735                      Catchment Area: Not Given                      Receiving Water: Not Given                      Cause of Incident: Not Given                      Incident Severity: Category 3 - Minor Incident                      Positional Accuracy: Located by supplier to within 100m</p>	A18SW (NW)	542	2	504000 224650
12	<p><b>Pollution Incidents to Controlled Waters</b></p> <p>Property Type: Not Given                      Location: Pastures Way, LUTON                      Authority: Environment Agency, Thames Region                      Pollutant: Unknown Sewage                      Note: Confirmed As A Pollution Incident                      Incident Date: 13th March 1989                      Incident Reference: NE890114                      Catchment Area: Not Given                      Receiving Water: Not Given                      Cause of Incident: Not Given                      Incident Severity: Category 2 - Significant Incident                      Positional Accuracy: Located by supplier to within 100m</p>	A8NE (S)	599	2	504500 223500
13	<p><b>Pollution Incidents to Controlled Waters</b></p> <p>Property Type: Not Given                      Location: Lewsey Park, LUTON                      Authority: Environment Agency, Thames Region                      Pollutant: Oils - Unknown                      Note: Not Supplied                      Incident Date: 22nd February 1996                      Incident Reference: NE960116                      Catchment Area: Not Given                      Receiving Water: Not Given                      Cause of Incident: Not Given                      Incident Severity: Category 3 - Minor Incident                      Positional Accuracy: Located by supplier to within 100m</p>	A8SE (S)	623	2	504400 223450
13	<p><b>Pollution Incidents to Controlled Waters</b></p> <p>Property Type: Not Given                      Location: Lewsey Park, LUTON                      Authority: Environment Agency, Thames Region                      Pollutant: Oils - Unknown                      Note: Not Supplied                      Incident Date: 16th July 1998                      Incident Reference: THNE1998039666                      Catchment Area: Not Given                      Receiving Water: Not Given                      Cause of Incident: Not Given                      Incident Severity: Category 2 - Significant Incident                      Positional Accuracy: Located by supplier to within 100m</p>	A8SE (S)	667	2	504395 223405
13	<p><b>Pollution Incidents to Controlled Waters</b></p> <p>Property Type: Not Given                      Location: Lewsey Park, LUTON                      Authority: Environment Agency, Thames Region                      Pollutant: Unknown Sewage                      Note: Yes                      Incident Date: 5th April 1995                      Incident Reference: NE950164                      Catchment Area: Not Given                      Receiving Water: Not Given                      Cause of Incident: Not Given                      Incident Severity: Category 3 - Minor Incident                      Positional Accuracy: Located by supplier to within 100m</p>	A8SE (S)	668	2	504400 223405

Map ID	Details	Quadrant Reference (Compass Direction)	Estimated Distance From Site	Contact	NGR
13	<b>Pollution Incidents to Controlled Waters</b> Property Type: Not Given Location: Lewsey Park, LUTON Authority: Environment Agency, Thames Region Pollutant: Chemicals - Unknown Note: Confirmed As A Pollution Incident Incident Date: 24th May 1995 Incident Reference: NE950300 Catchment Area: Not Given Receiving Water: Not Given Cause of Incident: Not Given Incident Severity: Category 3 - Minor Incident Positional Accuracy: Located by supplier to within 100m	A8SE (S)	669	2	504405 223405
13	<b>Pollution Incidents to Controlled Waters</b> Property Type: Not Given Location: Lewsey Park, LUTON Authority: Environment Agency, Thames Region Pollutant: Storm Sewage Note: Confirmed incident Incident Date: 29th January 1999 Incident Reference: THNE1999041797 Catchment Area: Not Given Receiving Water: Not Given Cause of Incident: Not Given Incident Severity: Category 3 - Minor Incident Positional Accuracy: Located by supplier to within 10m	A8SE (S)	672	2	504395 223400
13	<b>Pollution Incidents to Controlled Waters</b> Property Type: Not Given Location: Lewsey Park, LUTON Authority: Environment Agency, Thames Region Pollutant: Miscellaneous - Unknown Note: Confirmed As A Pollution Incident Incident Date: 20th February 1993 Incident Reference: NE930135 Catchment Area: Not Given Receiving Water: Not Given Cause of Incident: Not Given Incident Severity: Category 3 - Minor Incident Positional Accuracy: Located by supplier to within 100m	A8SE (S)	673	2	504400 223400
13	<b>Pollution Incidents to Controlled Waters</b> Property Type: Not Given Location: Lewsey Park, LUTON Authority: Environment Agency, Thames Region Pollutant: Unknown Sewage Note: Confirmed As A Pollution Incident Incident Date: 7th June 1994 Incident Reference: NE940394 Catchment Area: Not Given Receiving Water: Not Given Cause of Incident: Not Given Incident Severity: Category 2 - Significant Incident Positional Accuracy: Located by supplier to within 100m	A8SE (S)	674	2	504405 223400
13	<b>Pollution Incidents to Controlled Waters</b> Property Type: Not Given Location: Lewsey Park, LUTON Authority: Environment Agency, Thames Region Pollutant: Unknown Sewage Note: Confirmed As A Pollution Incident Incident Date: 2nd June 1994 Incident Reference: NE940383 Catchment Area: Not Given Receiving Water: Not Given Cause of Incident: Not Given Incident Severity: Category 3 - Minor Incident Positional Accuracy: Located by supplier to within 100m	A8SE (S)	678	2	504405 223395
13	<b>Pollution Incidents to Controlled Waters</b> Property Type: Not Given Location: Lewsey Park, LUTON Authority: Environment Agency, Thames Region Pollutant: Unknown Sewage Note: Confirmed As A Pollution Incident Incident Date: 23rd September 1993 Incident Reference: NE930657 Catchment Area: Not Given Receiving Water: Not Given Cause of Incident: Not Given Incident Severity: Category 3 - Minor Incident Positional Accuracy: Located by supplier to within 100m	A8SE (S)	678	2	504400 223395

Map ID	Details	Quadrant Reference (Compass Direction)	Estimated Distance From Site	Contact	NGR
14	<b>Pollution Incidents to Controlled Waters</b> Property Type: Not Given Location: Lewsey Park, LUTON Authority: Environment Agency, Thames Region Pollutant: Unknown Sewage Note: Confirmed As A Pollution Incident Incident Date: 11th September 1990 Incident Reference: NE900376 Catchment Area: Not Given Receiving Water: Not Given Cause of Incident: Not Given Incident Severity: Category 3 - Minor Incident Positional Accuracy: Located by supplier to within 100m	A8SE (S)	644	2	504490 223450
15	<b>Pollution Incidents to Controlled Waters</b> Property Type: Not Given Location: Boxted Close, LUTON Authority: Environment Agency, Thames Region Pollutant: Miscellaneous - Unknown Note: Confirmed As A Pollution Incident Incident Date: 10th September 1990 Incident Reference: NE900426 Catchment Area: Not Given Receiving Water: Not Given Cause of Incident: Not Given Incident Severity: Category 3 - Minor Incident Positional Accuracy: Located by supplier to within 100m	A14NE (E)	669	2	505001 224401
16	<b>Pollution Incidents to Controlled Waters</b> Property Type: Not Given Location: Lewsey Park, LUTON Authority: Environment Agency, Thames Region Pollutant: Oils - Unknown Note: Confirmed As A Pollution Incident Incident Date: 26th August 1992 Incident Reference: NE920461 Catchment Area: Not Given Receiving Water: Not Given Cause of Incident: Not Given Incident Severity: Category 2 - Significant Incident Positional Accuracy: Located by supplier to within 100m	A8SE (S)	676	2	504330 223390
16	<b>Pollution Incidents to Controlled Waters</b> Property Type: Not Given Location: Pastures Way, LUTON Authority: Environment Agency, Thames Region Pollutant: Miscellaneous - Other Note: Not Supplied Incident Date: 3rd October 1996 Incident Reference: NE960661 Catchment Area: Not Given Receiving Water: Not Given Cause of Incident: Not Given Incident Severity: Category 2 - Significant Incident Positional Accuracy: Located by supplier to within 100m	A8SE (S)	680	2	504380 223390
17	<b>Pollution Incidents to Controlled Waters</b> Property Type: Not Given Location: Pastures Way, LUTON Authority: Environment Agency, Thames Region Pollutant: Unknown Sewage Note: Confirmed As A Pollution Incident Incident Date: 8th December 1991 Incident Reference: NE910585 Catchment Area: Not Given Receiving Water: Not Given Cause of Incident: Not Given Incident Severity: Category 2 - Significant Incident Positional Accuracy: Located by supplier to within 100m	A8SE (S)	694	2	504500 223400
18	<b>Pollution Incidents to Controlled Waters</b> Property Type: Not Given Location: Sedgewick Road, LUTON Authority: Environment Agency, Thames Region Pollutant: Unknown Sewage Note: Confirmed As A Pollution Incident Incident Date: Not Supplied Incident Reference: NE890102 Catchment Area: Not Given Receiving Water: Not Given Cause of Incident: Not Given Incident Severity: Category 2 - Significant Incident Positional Accuracy: Located by supplier to within 100m	A18NE (N)	732	2	504600 224900

Map ID	Details	Quadrant Reference (Compass Direction)	Estimated Distance From Site	Contact	NGR
19	<p><b>Pollution Incidents to Controlled Waters</b></p> <p>Property Type: Not Given                      Location: Brook Road, LUTON                      Authority: Environment Agency, Thames Region                      Pollutant: Miscellaneous - Urban Runoff                      Note: Confirmed As A Pollution Incident                      Incident Date: 26th February 1993                      Incident Reference: NE930159                      Catchment Area: Not Given                      Receiving Water: Not Given                      Cause of Incident: Not Given                      Incident Severity: Category 3 - Minor Incident                      Positional Accuracy: Located by supplier to within 100m</p>	A9NW (SE)	735	2	504800 223500
20	<p><b>Pollution Incidents to Controlled Waters</b></p> <p>Property Type: Not Given                      Location: Pastures Way, LUTON                      Authority: Environment Agency, Thames Region                      Pollutant: Unknown Sewage                      Note: Confirmed As A Pollution Incident                      Incident Date: 21st November 1993                      Incident Reference: NE930795                      Catchment Area: Not Given                      Receiving Water: Not Given                      Cause of Incident: Not Given                      Incident Severity: Category 3 - Minor Incident                      Positional Accuracy: Located by supplier to within 100m</p>	A8SE (S)	772	2	504400 223300
21	<p><b>Pollution Incidents to Controlled Waters</b></p> <p>Property Type: Not Given                      Location: Strangers Way, LUTON                      Authority: Environment Agency, Thames Region                      Pollutant: Oils - Unknown                      Note: Confirmed As A Pollution Incident                      Incident Date: 28th September 1992                      Incident Reference: NE920532                      Catchment Area: Not Given                      Receiving Water: Not Given                      Cause of Incident: Not Given                      Incident Severity: Category 2 - Significant Incident                      Positional Accuracy: Located by supplier to within 100m</p>	A9NE (SE)	816	2	505100 223700
22	<p><b>Pollution Incidents to Controlled Waters</b></p> <p>Property Type: Not Given                      Location: LUTON                      Authority: Environment Agency, Thames Region                      Pollutant: Unknown Sewage                      Note: Confirmed As A Pollution Incident                      Incident Date: 1st August 1990                      Incident Reference: NE900319                      Catchment Area: Not Given                      Receiving Water: Not Given                      Cause of Incident: Not Given                      Incident Severity: Category 3 - Minor Incident                      Positional Accuracy: Located by supplier to within 100m</p>	A14NE (E)	853	2	505200 224400
23	<p><b>Pollution Incidents to Controlled Waters</b></p> <p>Property Type: Not Given                      Location: Mayne Avenue, LUTON                      Authority: Environment Agency, Thames Region                      Pollutant: Oils - Unknown                      Note: Confirmed As A Pollution Incident                      Incident Date: 7th July 1992                      Incident Reference: NE920360                      Catchment Area: Not Given                      Receiving Water: Not Given                      Cause of Incident: Not Given                      Incident Severity: Category 3 - Minor Incident                      Positional Accuracy: Located by supplier to within 100m</p>	A14SE (E)	903	2	505300 224100
24	<p><b>Pollution Incidents to Controlled Waters</b></p> <p>Property Type: Not Given                      Location: LUTON                      Authority: Environment Agency, Thames Region                      Pollutant: Chemicals - Unknown                      Note: Confirmed incident                      Incident Date: 30th April 1999                      Incident Reference: THNE1999042820                      Catchment Area: Not Given                      Receiving Water: Not Given                      Cause of Incident: Not Given                      Incident Severity: Category 2 - Significant Incident                      Positional Accuracy: Located by supplier to within 10m</p>	A19NW (NE)	910	2	504801 225001



Map ID	Details	Quadrant Reference (Compass Direction)	Estimated Distance From Site	Contact	NGR
25	<b>Pollution Incidents to Controlled Waters</b> Property Type: Not Given Location: Montaque Avenue, LUTON Authority: Environment Agency, Thames Region Pollutant: Unknown Sewage Note: Confirmed As A Pollution Incident Incident Date: 1st December 1989 Incident Reference: NE890502 Catchment Area: Not Given Receiving Water: Not Given Cause of Incident: Not Given Incident Severity: Category 3 - Minor Incident Positional Accuracy: Located by supplier to within 100m	A14SE (E)	910	2	505300 224000
26	<b>Pollution Incidents to Controlled Waters</b> Property Type: Not Given Location: Acworth Crescent Authority: Environment Agency, Thames Region Pollutant: Oils - Unknown Note: Confirmed As A Pollution Incident Incident Date: 7th March 1991 Incident Reference: NE910114 Catchment Area: Not Given Receiving Water: Not Given Cause of Incident: Not Given Incident Severity: Category 3 - Minor Incident Positional Accuracy: Located by supplier to within 100m	A14SE (E)	928	2	505300 223900
27	<b>Substantiated Pollution Incident Register</b> Authority: Environment Agency - Anglian Region, Eastern Area Incident Date: 16th July 2015 Incident Reference: 1355444 Water Impact: Category 2 - Significant Incident Air Impact: Category 3 - Minor Incident Land Impact: Category 4 - No Impact Positional Accuracy: Located by supplier to within 10m Pollutant: Crude Sewage	A12NW (W)	614	2	503635 224181
28	<b>Substantiated Pollution Incident Register</b> Authority: Environment Agency - Thames Region, North East Area Incident Date: 30th January 2004 Incident Reference: 213708 Water Impact: Category 2 - Significant Incident Air Impact: Category 4 - No Impact Land Impact: Category 4 - No Impact Positional Accuracy: Located by supplier to within 10m Pollutant: Oils And Fuel: Gas And Fuel Oils	A9NW (SE)	692	2	504681 223482
29	<b>Substantiated Pollution Incident Register</b> Authority: Environment Agency - Thames Region, North East Area Incident Date: 9th October 2001 Incident Reference: 35588 Water Impact: Category 3 - Minor Incident Air Impact: Category 2 - Significant Incident Land Impact: Category 3 - Minor Incident Positional Accuracy: Located by supplier to within 10m Pollutant: Contaminated Water: Firefighting Run-Off	A19NW (NE)	925	2	504747 225047
30	<b>Water Abstractions</b> Operator: Tsl Limited Licence Number: Th/038/0001/012 Permit Version: 1 Location: Underground Strata Comprising Of Chalk At Woodside Link Road Authority: Environment Agency, Thames Region Abstraction: Construction:Dewatering Abstraction Type: Water may be abstracted from any point within an area Source: Groundwater Daily Rate (m3): Not Supplied Yearly Rate (m3): Not Supplied Details: Not Supplied Authorised Start: 01 April Authorised End: 31 March Permit Start Date: 9th November 2021 Permit End Date: Not Supplied Positional Accuracy: Located by supplier to within 10m	A18NW (N)	791	2	504038 224944

Map ID	Details	Quadrant Reference (Compass Direction)	Estimated Distance From Site	Contact	NGR
	<b>Groundwater Vulnerability Map</b> Combined Classification: Secondary Superficial Aquifer - High Vulnerability Combined Vulnerability: High Combined Aquifer: Productive Bedrock Aquifer, Productive Superficial Aquifer Pollutant Speed: High Bedrock Flow: Well Connected Fractures Dilution: <300 mm/year Baseflow Index: >70% Superficial Patchiness: <90% Superficial Thickness: <3m Superficial Recharge: No Data	A13NE (NE)	0	4	504341 224167
	<b>Groundwater Vulnerability Map</b> Combined Classification: Secondary Superficial Aquifer - High Vulnerability Combined Vulnerability: High Combined Aquifer: Productive Bedrock Aquifer, Productive Superficial Aquifer Pollutant Speed: High Bedrock Flow: Well Connected Fractures Dilution: <300 mm/year Baseflow Index: >70% Superficial Patchiness: <90% Superficial Thickness: <3m Superficial Recharge: No Data	A13NW (NW)	0	4	504316 224148
	<b>Groundwater Vulnerability Map</b> Combined Classification: Principle Bedrock Aquifer - High Vulnerability Combined Vulnerability: High Combined Aquifer: Productive Bedrock Aquifer, No Superficial Aquifer Pollutant Speed: High Bedrock Flow: Well Connected Fractures Dilution: <300 mm/year Baseflow Index: >70% Superficial Patchiness: <90% Superficial Thickness: <3m Superficial Recharge: No Data	A13NW (W)	0	4	504323 224141
	<b>Groundwater Vulnerability - Soluble Rock Risk</b> Classification: Significant Risk - Problems Unlikely	A13NW (W)	0	4	504323 224141
	<b>Bedrock Aquifer Designations</b> Aquifer Designation: Principal Aquifer	A13NW (W)	0	4	504323 224141
	<b>Superficial Aquifer Designations</b> Aquifer Designation: Secondary Aquifer - Undifferentiated	A13NE (NE)	0	4	504341 224167
	<b>Superficial Aquifer Designations</b> Aquifer Designation: Secondary Aquifer - A	A13NW (NW)	0	4	504316 224148
31	<b>Source Protection Zones</b> Name: Not Supplied Source: Environment Agency, Head Office Reference: Not Supplied Type: Zone III (Total Catchment): The total area needed to support the discharge from the protected groundwater source.	A13NW (W)	0	2	504323 224141
32	<b>Source Protection Zones</b> Name: Not Supplied Source: Environment Agency, Head Office Reference: Not Supplied Type: Zone II (Outer Protection Zone): Either 25% of the source area or a 400 day travel time whichever is greater.	A13SE (SE)	355	2	504614 223832

Map ID	Details	Quadrant Reference (Compass Direction)	Estimated Distance From Site	Contact	NGR
	<b>Extreme Flooding from Rivers or Sea without Defences</b> Type: Extent of Extreme Flooding from Rivers or Sea without Defences Flood Plain Type: Fluvial Events Boundary Accuracy: As Supplied	A13NE (NE)	148	2	504424 224339
	<b>Flooding from Rivers or Sea without Defences</b> None				
	<b>Areas Benefiting from Flood Defences</b> None				
	<b>Flood Water Storage Areas</b> None				
	<b>Flood Defences</b> None				
33	<b>OS Water Network Lines</b> Watercourse Form: Inland river Watercourse Length: 872.4 Watercourse Level: On ground surface Permanent: True Watercourse Name: Houghton Brook Catchment Name: Thames Primacy: 1	A13NE (N)	201	5	504396 224409
34	<b>OS Water Network Lines</b> Watercourse Form: Inland river Watercourse Length: 82.7 Watercourse Level: On ground surface Permanent: True Watercourse Name: Houghton Brook Catchment Name: Thames Primacy: 1	A13NE (NE)	266	5	504509 224424
35	<b>OS Water Network Lines</b> Watercourse Form: Inland river Watercourse Length: 444.9 Watercourse Level: On ground surface Permanent: True Watercourse Name: Houghton Brook Catchment Name: Thames Primacy: 1	A13NE (NE)	299	5	504585 224392
36	<b>OS Water Network Lines</b> Watercourse Form: Inland river Watercourse Length: 105.9 Watercourse Level: On ground surface Permanent: True Watercourse Name: Not Supplied Catchment Name: Thames Primacy: 1	A18SE (N)	442	5	504465 224640
37	<b>OS Water Network Lines</b> Watercourse Form: Inland river Watercourse Length: 13.1 Watercourse Level: On ground surface Permanent: True Watercourse Name: Not Supplied Catchment Name: Thames Primacy: 1	A18SE (N)	452	5	504342 224667
38	<b>OS Water Network Lines</b> Watercourse Form: Inland river Watercourse Length: 11.2 Watercourse Level: Underground Permanent: True Watercourse Name: Not Supplied Catchment Name: Thames Primacy: 1	A18SE (N)	526	5	504419 224735
39	<b>OS Water Network Lines</b> Watercourse Form: Inland river Watercourse Length: 93.2 Watercourse Level: On ground surface Permanent: True Watercourse Name: Houghton Brook Catchment Name: Thames Primacy: 1	A12NE (NW)	536	5	503804 224467

Map ID	Details	Quadrant Reference (Compass Direction)	Estimated Distance From Site	Contact	NGR
40	<b>OS Water Network Lines</b> Watercourse Form: Inland river Watercourse Length: 1440.8 Watercourse Level: On ground surface Permanent: True Watercourse Name: Not Supplied Catchment Name: Not Supplied Primacy: 1	A18SE (N)	536	5	504414 224745
41	<b>OS Water Network Lines</b> Watercourse Form: Inland river Watercourse Length: 20.4 Watercourse Level: On ground surface Permanent: True Watercourse Name: Not Supplied Catchment Name: Thames Primacy: 1	A12NE (NW)	538	5	503792 224452
42	<b>OS Water Network Lines</b> Watercourse Form: Inland river Watercourse Length: 337.1 Watercourse Level: On ground surface Permanent: True Watercourse Name: Houghton Brook Catchment Name: Thames Primacy: 1	A12NE (NW)	538	5	503792 224452
43	<b>OS Water Network Lines</b> Watercourse Form: Inland river Watercourse Length: 256.0 Watercourse Level: On ground surface Permanent: True Watercourse Name: Not Supplied Catchment Name: Thames Primacy: 1	A12NE (NW)	555	5	503783 224470
44	<b>OS Water Network Lines</b> Watercourse Form: Inland river Watercourse Length: 6.6 Watercourse Level: Underground Permanent: True Watercourse Name: Houghton Brook Catchment Name: Thames Primacy: 1	A17SE (NW)	581	5	503801 224539
45	<b>OS Water Network Lines</b> Watercourse Form: Inland river Watercourse Length: 11.5 Watercourse Level: Underground Permanent: True Watercourse Name: Houghton Brook Catchment Name: Thames Primacy: 1	A14NE (E)	630	5	505005 224278
46	<b>OS Water Network Lines</b> Watercourse Form: Inland river Watercourse Length: 81.3 Watercourse Level: On ground surface Permanent: True Watercourse Name: Not Supplied Catchment Name: Thames Primacy: 1	A12NW (W)	633	5	503616 224166
47	<b>OS Water Network Lines</b> Watercourse Form: Inland river Watercourse Length: 46.2 Watercourse Level: Underground Permanent: True Watercourse Name: Not Supplied Catchment Name: Thames Primacy: 1	A12NW (W)	633	5	503616 224167
48	<b>OS Water Network Lines</b> Watercourse Form: Inland river Watercourse Length: 284.6 Watercourse Level: On ground surface Permanent: True Watercourse Name: Houghton Brook Catchment Name: Thames Primacy: 1	A14NE (E)	638	5	505015 224272

Map ID	Details	Quadrant Reference (Compass Direction)	Estimated Distance From Site	Contact	NGR
49	<b>OS Water Network Lines</b> Watercourse Form: Inland river Watercourse Length: 4.0 Watercourse Level: On ground surface Permanent: True Watercourse Name: Not Supplied Catchment Name: Thames Primacy: 1	A12NW (W)	663	5	503587 224203
50	<b>OS Water Network Lines</b> Watercourse Form: Inland river Watercourse Length: 193.5 Watercourse Level: On ground surface Permanent: True Watercourse Name: Houghton Brook Catchment Name: Thames Primacy: 1	A12NW (W)	665	5	503585 224207
51	<b>OS Water Network Lines</b> Watercourse Form: Inland river Watercourse Length: 711.9 Watercourse Level: On ground surface Permanent: True Watercourse Name: Not Supplied Catchment Name: Thames Primacy: 1	A9NW (SE)	683	5	504681 223492
52	<b>OS Water Network Lines</b> Watercourse Form: Inland river Watercourse Length: 718.2 Watercourse Level: On ground surface Permanent: True Watercourse Name: Not Supplied Catchment Name: Thames Primacy: 1	A18NW (N)	725	5	504257 224934
53	<b>OS Water Network Lines</b> Watercourse Form: Inland river Watercourse Length: 142.8 Watercourse Level: On ground surface Permanent: True Watercourse Name: Not Supplied Catchment Name: Thames Primacy: 1	A17SE (NW)	759	5	503725 224718
54	<b>OS Water Network Lines</b> Watercourse Form: Inland river Watercourse Length: 55.6 Watercourse Level: On ground surface Permanent: True Watercourse Name: Not Supplied Catchment Name: Thames Primacy: 1	A17SE (NW)	759	5	503725 224718
55	<b>OS Water Network Lines</b> Watercourse Form: Inland river Watercourse Length: 290.8 Watercourse Level: On ground surface Permanent: True Watercourse Name: Not Supplied Catchment Name: Thames Primacy: 1	A17SE (NW)	777	5	503750 224765
56	<b>OS Water Network Lines</b> Watercourse Form: Inland river Watercourse Length: 6.4 Watercourse Level: Underground Permanent: True Watercourse Name: Not Supplied Catchment Name: Thames Primacy: 1	A17SE (NW)	797	5	503727 224771
57	<b>OS Water Network Lines</b> Watercourse Form: Inland river Watercourse Length: 5.5 Watercourse Level: On ground surface Permanent: True Watercourse Name: Not Supplied Catchment Name: Thames Primacy: 1	A17SE (NW)	802	5	503721 224772

Map ID	Details	Quadrant Reference (Compass Direction)	Estimated Distance From Site	Contact	NGR
58	<b>OS Water Network Lines</b> Watercourse Form: Inland river Watercourse Length: 5.6 Watercourse Level: Not Supplied Permanent: True Watercourse Name: Not Supplied Catchment Name: Thames Primacy: 1	A9NE (SE)	803	5	505013 223600
59	<b>OS Water Network Lines</b> Watercourse Form: Inland river Watercourse Length: 13.0 Watercourse Level: On ground surface Permanent: True Watercourse Name: Not Supplied Catchment Name: Thames Primacy: 1	A9NE (SE)	805	5	505018 223602
60	<b>OS Water Network Lines</b> Watercourse Form: Inland river Watercourse Length: 340.3 Watercourse Level: On ground surface Permanent: True Watercourse Name: Not Supplied Catchment Name: Thames Primacy: 1	A17SE (NW)	806	5	503716 224773
61	<b>OS Water Network Lines</b> Watercourse Form: Inland river Watercourse Length: 150.0 Watercourse Level: On ground surface Permanent: True Watercourse Name: Houghton Brook Catchment Name: Thames Primacy: 1	A12SW (W)	808	5	503446 224084
62	<b>OS Water Network Lines</b> Watercourse Form: Inland river Watercourse Length: 2.3 Watercourse Level: On ground surface Permanent: True Watercourse Name: Not Supplied Catchment Name: Thames Primacy: 1	A12SW (W)	808	5	503446 224084
63	<b>OS Water Network Lines</b> Watercourse Form: Inland river Watercourse Length: 64.3 Watercourse Level: Not Supplied Permanent: True Watercourse Name: Not Supplied Catchment Name: Thames Primacy: 1	A9NE (SE)	812	5	505030 223606
64	<b>OS Water Network Lines</b> Watercourse Form: Inland river Watercourse Length: 673.8 Watercourse Level: On ground surface Permanent: True Watercourse Name: Not Supplied Catchment Name: Thames Primacy: 1	A9NE (SE)	843	5	505125 223690
65	<b>OS Water Network Lines</b> Watercourse Form: Inland river Watercourse Length: 4.3 Watercourse Level: On ground surface Permanent: True Watercourse Name: Not Supplied Catchment Name: Thames Primacy: 1	A9NE (SE)	847	5	505091 223629
66	<b>OS Water Network Lines</b> Watercourse Form: Inland river Watercourse Length: 171.7 Watercourse Level: On ground surface Permanent: True Watercourse Name: Not Supplied Catchment Name: Thames Primacy: 1	A9NE (SE)	849	5	505094 223631

Map ID	Details	Quadrant Reference (Compass Direction)	Estimated Distance From Site	Contact	NGR
67	<b>OS Water Network Lines</b> Watercourse Form: Inland river Watercourse Length: 4.9 Watercourse Level: Underground Permanent: True Watercourse Name: Not Supplied Catchment Name: Thames Primacy: 1	A17SW (NW)	890	5	503592 224769
68	<b>OS Water Network Lines</b> Watercourse Form: Inland river Watercourse Length: 342.9 Watercourse Level: On ground surface Permanent: True Watercourse Name: Not Supplied Catchment Name: Thames Primacy: 1	A17SW (NW)	895	5	503587 224771
69	<b>OS Water Network Lines</b> Watercourse Form: Inland river Watercourse Length: 246.6 Watercourse Level: On ground surface Permanent: True Watercourse Name: Houghton Brook Catchment Name: Thames Primacy: 1	A14NE (E)	908	5	505270 224362
70	<b>OS Water Network Lines</b> Watercourse Form: Inland river Watercourse Length: 228.9 Watercourse Level: Underground Permanent: True Watercourse Name: Not Supplied Catchment Name: Thames Primacy: 1	A14NE (E)	908	5	505270 224362
71	<b>OS Water Network Lines</b> Watercourse Form: Inland river Watercourse Length: 109.9 Watercourse Level: On ground surface Permanent: True Watercourse Name: Houghton Brook Catchment Name: Thames Primacy: 1	A11SE (W)	955	5	503298 224082
72	<b>OS Water Network Lines</b> Watercourse Form: Inland river Watercourse Length: 3.5 Watercourse Level: On ground surface Permanent: True Watercourse Name: Not Supplied Catchment Name: Thames Primacy: 1	A11SE (W)	955	5	503298 224082

Map ID	Details	Quadrant Reference (Compass Direction)	Estimated Distance From Site	Contact	NGR
73	<p><b>Licensed Waste Management Facilities (Locations)</b></p> <p>Licence Number: 80725            Location: 250 Toddington Road, Luton, Bedfordshire, LU4 9DZ            Operator Name: X-Bert Haulage Limited            Operator Location: Not Supplied            Authority: Environment Agency - Thames Region, North East Area            Site Category: Household, Commercial And Industrial Transfer Stations  <b>Licence Status: Transferred</b>            Issued: 28th September 2005            Last Modified: Not Supplied            Expires: Not Supplied            Suspended: Not Supplied            Revoked: Not Supplied            Surrendered: Not Supplied            IPPC Reference: Not Supplied            Positional Accuracy: Located by supplier to within 10m</p>	A19NW (NE)	824	2	504876 224844
74	<p><b>Licensed Waste Management Facilities (Locations)</b></p> <p>Licence Number: 80671            Location: Land/premises At, Progress Way, Toddington Road, Luton, Bedfordshire, LU4 9TR            Operator Name: Hayward Andrew            Operator Location: Not Supplied            Authority: Environment Agency - Thames Region, North East Area            Site Category: Metal Recycling Sites (Vehicle Dismantlers)  <b>Licence Status: Expired</b>            Issued: 22nd October 2004            Last Modified: Not Supplied            Expires: 12th August 2016            Suspended: Not Supplied            Revoked: Not Supplied            Surrendered: Not Supplied            IPPC Reference: Not Supplied            Positional Accuracy: Located by supplier to within 10m</p>	A19NW (NE)	937	2	504719 225073
74	<p><b>Licensed Waste Management Facilities (Locations)</b></p> <p>Licence Number: 80450            Location: North Luton Ind.Estate, Progress Way, Toddington Road, Luton, Bedfordshire, LU4 9TR            Operator Name: Hayward Transport ( U K ) Ltd            Operator Location: Not Supplied            Authority: Environment Agency - Thames Region, North East Area            Site Category: Metal Recycling Sites (Vehicle Dismantlers)  <b>Licence Status: Expired</b>            Issued: 20th August 1993            Last Modified: Not Supplied            Expires: Not Supplied            Suspended: Not Supplied            Revoked: Not Supplied            Surrendered: Not Supplied            IPPC Reference: Not Supplied            Positional Accuracy: Located by supplier to within 100m</p>	A19NW (N)	954	2	504700 225100
74	<p><b>Licensed Waste Management Facilities (Locations)</b></p> <p>Licence Number: 80600            Location: Progress Way H W R C, Progress Way, Luton, Bedfordshire, LU4 9TR            Operator Name: F C C Recycling ( U K ) Limited            Operator Location: Not Supplied            Authority: Environment Agency - Thames Region, North East Area            Site Category: Household Waste Amenity Sites  <b>Licence Status: Modified</b>            Issued: 15th December 2004            Last Modified: 22nd November 2012            Expires: Not Supplied            Suspended: Not Supplied            Revoked: Not Supplied            Surrendered: Not Supplied            IPPC Reference: Not Supplied            Positional Accuracy: Located by supplier to within 10m</p>	A19NW (N)	955	2	504687 225106
	<p><b>Local Authority Landfill Coverage</b></p> <p>Name: Luton Unitary Council            - Has supplied landfill data</p>		0	6	504323 224141
	<p><b>Local Authority Landfill Coverage</b></p> <p>Name: South Bedfordshire District Council            - Has supplied landfill data</p>		36	8	504279 224224
	<p><b>Local Authority Landfill Coverage</b></p> <p>Name: Bedfordshire County Council            - Has no landfill data to supply</p>		36	7	504279 224224



Map ID	Details	Quadrant Reference (Compass Direction)	Estimated Distance From Site	Contact	NGR
75	<b>Potentially Infilled Land (Non-Water)</b> Bearing Ref: SE Use: Unknown Filled Ground (Pit, quarry etc) Date of Mapping: 1993	A9NW (SE)	485	-	504735 223767
76	<b>Potentially Infilled Land (Water)</b> Use: Unknown Filled Ground (Pond, marsh, river, stream, dock etc) Date of Mapping: 1938	A19NW (NE)	823	-	504815 224889
77	<b>Registered Waste Treatment or Disposal Sites</b> Licence Holder: Hayward Transport (Uk) Ltd Licence Reference: 24/1993 Site Location: Progress Way, North Luton Industrial Estate, Toddington Road, Luton, Bedfordshire, Lu4 9tr Operator Location: As Site Address Authority: Environment Agency - Thames Region, North East Area Site Category: Scrapyard Max Input Rate: Very Small (Less than 10,000 tonnes per year) Waste Source: No known restriction on source of waste Restrictions: Licence Status: May not be working (licence suspended)Suspended Dated: 20th August 1993 Preceded By: Not Given Licence: Superseded By: Not Given Licence: Positional Accuracy: Manually positioned to the road within the address or location Boundary Quality: Not Supplied Authorised Waste: Max.Storage In Licence Scrap Motor Vehicles/Components Prohibited Waste: Waste N.O.S.	A18NE (N)	839	2	504640 225000

Map ID	Details	Quadrant Reference (Compass Direction)	Estimated Distance From Site	Contact	NGR
	<b>BGS 1:625,000 Solid Geology</b> Description: Grey Chalk Subgroup	A13NW (W)	0	1	504323 224141
	<b>BGS Estimated Soil Chemistry</b> Source: British Geological Survey, National Geoscience Information Service Soil Sample Type: Rural Soil Arsenic Concentration: 25 - 35 mg/kg Cadmium Concentration: <1.8 mg/kg Chromium Concentration: 60 - 90 mg/kg Lead Concentration: <100 mg/kg Nickel Concentration: 30 - 45 mg/kg	A13NW (NW)	0	1	504316 224148
	<b>BGS Estimated Soil Chemistry</b> Source: British Geological Survey, National Geoscience Information Service Soil Sample Type: Rural Soil Arsenic Concentration: <15 mg/kg Cadmium Concentration: <1.8 mg/kg Chromium Concentration: 40 - 60 mg/kg Lead Concentration: <100 mg/kg Nickel Concentration: 15 - 30 mg/kg	A13NW (W)	0	1	504323 224141
	<b>BGS Estimated Soil Chemistry</b> Source: British Geological Survey, National Geoscience Information Service Soil Sample Type: Rural Soil Arsenic Concentration: 15 - 25 mg/kg Cadmium Concentration: <1.8 mg/kg Chromium Concentration: 60 - 90 mg/kg Lead Concentration: <100 mg/kg Nickel Concentration: 30 - 45 mg/kg	A13NE (NE)	0	1	504341 224167
	<b>BGS Estimated Soil Chemistry</b> Source: British Geological Survey, National Geoscience Information Service Soil Sample Type: Rural Soil Arsenic Concentration: 25 - 35 mg/kg Cadmium Concentration: <1.8 mg/kg Chromium Concentration: 60 - 90 mg/kg Lead Concentration: <100 mg/kg Nickel Concentration: 30 - 45 mg/kg	A13SE (SE)	115	1	504486 224041
	<b>BGS Estimated Soil Chemistry</b> Source: British Geological Survey, National Geoscience Information Service Soil Sample Type: Rural Soil Arsenic Concentration: 25 - 35 mg/kg Cadmium Concentration: <1.8 mg/kg Chromium Concentration: 60 - 90 mg/kg Lead Concentration: <100 mg/kg Nickel Concentration: 30 - 45 mg/kg	A13NE (NE)	311	1	504564 224434
	<b>BGS Estimated Soil Chemistry</b> Source: British Geological Survey, National Geoscience Information Service Soil Sample Type: Rural Soil Arsenic Concentration: 25 - 35 mg/kg Cadmium Concentration: <1.8 mg/kg Chromium Concentration: 60 - 90 mg/kg Lead Concentration: <100 mg/kg Nickel Concentration: 30 - 45 mg/kg	A14SW (E)	418	1	504801 224008

Map ID	Details	Quadrant Reference (Compass Direction)	Estimated Distance From Site	Contact	NGR
	<b>BGS Estimated Soil Chemistry</b> Source: British Geological Survey, National Geoscience Information Service Soil Sample Type: Rural Soil Arsenic <15 mg/kg Concentration: Cadmium <1.8 mg/kg Concentration: Chromium 40 - 60 mg/kg Concentration: Lead Concentration: <100 mg/kg Nickel 30 - 45 mg/kg Concentration:	A12NE (NW)	453	1	503834 224350
	<b>BGS Estimated Soil Chemistry</b> Source: British Geological Survey, National Geoscience Information Service Soil Sample Type: Rural Soil Arsenic <15 mg/kg Concentration: Cadmium <1.8 mg/kg Concentration: Chromium 40 - 60 mg/kg Concentration: Lead Concentration: <100 mg/kg Nickel 30 - 45 mg/kg Concentration:	A7NE (SW)	569	1	503916 223648
	<b>BGS Estimated Soil Chemistry</b> Source: British Geological Survey, National Geoscience Information Service Soil Sample Type: Rural Soil Arsenic 25 - 35 mg/kg Concentration: Cadmium <1.8 mg/kg Concentration: Chromium 60 - 90 mg/kg Concentration: Lead Concentration: <100 mg/kg Nickel 30 - 45 mg/kg Concentration:	A9NW (SE)	728	1	504786 223499
	<b>BGS Estimated Soil Chemistry</b> Source: British Geological Survey, National Geoscience Information Service Soil Sample Type: Rural Soil Arsenic <15 mg/kg Concentration: Cadmium <1.8 mg/kg Concentration: Chromium 40 - 60 mg/kg Concentration: Lead Concentration: <100 mg/kg Nickel 15 - 30 mg/kg Concentration:	A9NE (SE)	849	1	505058 223582
	<b>BGS Estimated Soil Chemistry</b> Source: British Geological Survey, National Geoscience Information Service Soil Sample Type: Rural Soil Arsenic <15 mg/kg Concentration: Cadmium <1.8 mg/kg Concentration: Chromium 40 - 60 mg/kg Concentration: Lead Concentration: <100 mg/kg Nickel 30 - 45 mg/kg Concentration:	A12SW (W)	854	1	503402 224061
	<b>BGS Estimated Soil Chemistry</b> Source: British Geological Survey, National Geoscience Information Service Soil Sample Type: Rural Soil Arsenic 15 - 25 mg/kg Concentration: Cadmium <1.8 mg/kg Concentration: Chromium 60 - 90 mg/kg Concentration: Lead Concentration: <100 mg/kg Nickel 15 - 30 mg/kg Concentration:	A9SW (SE)	860	1	504783 223446

Map ID	Details	Quadrant Reference (Compass Direction)	Estimated Distance From Site	Contact	NGR
	<b>BGS Estimated Soil Chemistry</b> Source: British Geological Survey, National Geoscience Information Service Soil Sample Type: Rural Soil Arsenic: 25 - 35 mg/kg Concentration: Cadmium: <1.8 mg/kg Concentration: Chromium: 60 - 90 mg/kg Concentration: Lead Concentration: <100 mg/kg Nickel: 30 - 45 mg/kg Concentration:	A14SE (E)	966	1	505321 223833
	<b>BGS Estimated Soil Chemistry</b> Source: British Geological Survey, National Geoscience Information Service Soil Sample Type: Rural Soil Arsenic: 15 - 25 mg/kg Concentration: Cadmium: <1.8 mg/kg Concentration: Chromium: 60 - 90 mg/kg Concentration: Lead Concentration: <100 mg/kg Nickel: 30 - 45 mg/kg Concentration:	A23SW (N)	967	1	504242 225176
	<b>BGS Measured Urban Soil Chemistry</b> No data available				
	<b>BGS Urban Soil Chemistry Averages</b> No data available				
	<b>Coal Mining Affected Areas</b> In an area that might not be affected by coal mining				
	<b>Non Coal Mining Areas of Great Britain</b> Risk: Rare Source: British Geological Survey, National Geoscience Information Service	A13NW (W)	0	1	504323 224141
	<b>Potential for Collapsible Ground Stability Hazards</b> Hazard Potential: Very Low Source: British Geological Survey, National Geoscience Information Service	A13NW (W)	0	1	504323 224141
	<b>Potential for Collapsible Ground Stability Hazards</b> Hazard Potential: No Hazard Source: British Geological Survey, National Geoscience Information Service	A13NE (NE)	177	1	504422 224373
	<b>Potential for Compressible Ground Stability Hazards</b> Hazard Potential: No Hazard Source: British Geological Survey, National Geoscience Information Service	A13NW (W)	0	1	504323 224141
	<b>Potential for Compressible Ground Stability Hazards</b> Hazard Potential: Moderate Source: British Geological Survey, National Geoscience Information Service	A13NE (NE)	177	1	504422 224373
	<b>Potential for Ground Dissolution Stability Hazards</b> Hazard Potential: No Hazard Source: British Geological Survey, National Geoscience Information Service	A13NW (W)	0	1	504323 224141
	<b>Potential for Ground Dissolution Stability Hazards</b> Hazard Potential: Very Low Source: British Geological Survey, National Geoscience Information Service	A13NW (NW)	0	1	504316 224148
	<b>Potential for Ground Dissolution Stability Hazards</b> Hazard Potential: Very Low Source: British Geological Survey, National Geoscience Information Service	A13SE (SE)	115	1	504486 224041
	<b>Potential for Landslide Ground Stability Hazards</b> Hazard Potential: No Hazard Source: British Geological Survey, National Geoscience Information Service	A13NW (W)	0	1	504323 224141
	<b>Potential for Landslide Ground Stability Hazards</b> Hazard Potential: Very Low Source: British Geological Survey, National Geoscience Information Service	A13NW (NW)	0	1	504316 224148
	<b>Potential for Landslide Ground Stability Hazards</b> Hazard Potential: Very Low Source: British Geological Survey, National Geoscience Information Service	A13SE (SE)	115	1	504486 224041
	<b>Potential for Running Sand Ground Stability Hazards</b> Hazard Potential: Very Low Source: British Geological Survey, National Geoscience Information Service	A13NW (NW)	0	1	504316 224148

Map ID	Details	Quadrant Reference (Compass Direction)	Estimated Distance From Site	Contact	NGR
	<b>Potential for Running Sand Ground Stability Hazards</b> Hazard Potential: No Hazard Source: British Geological Survey, National Geoscience Information Service	A13NW (W)	0	1	504323 224141
	<b>Potential for Running Sand Ground Stability Hazards</b> Hazard Potential: Very Low Source: British Geological Survey, National Geoscience Information Service	A13SE (SE)	115	1	504486 224041
	<b>Potential for Running Sand Ground Stability Hazards</b> Hazard Potential: Low Source: British Geological Survey, National Geoscience Information Service	A13NE (NE)	177	1	504422 224373
	<b>Potential for Shrinking or Swelling Clay Ground Stability Hazards</b> Hazard Potential: Very Low Source: British Geological Survey, National Geoscience Information Service	A13NE (NE)	0	1	504341 224167
	<b>Potential for Shrinking or Swelling Clay Ground Stability Hazards</b> Hazard Potential: No Hazard Source: British Geological Survey, National Geoscience Information Service	A13NW (W)	0	1	504323 224141
	<b>Radon Potential - Radon Affected Areas</b> Affected Area: The property is in a Lower probability radon area (less than 1% of homes are estimated to be at or above the Action Level). Source: British Geological Survey, National Geoscience Information Service	A13SE (S)	0	1	504325 224125
	<b>Radon Potential - Radon Affected Areas</b> Affected Area: The property is in an Intermediate probability radon area (1 to 3% of homes are estimated to be at or above the Action Level). Source: British Geological Survey, National Geoscience Information Service	A13NW (W)	0	1	504323 224141
	<b>Radon Potential - Radon Protection Measures</b> Protection Measure: No radon protective measures are necessary in the construction of new dwellings or extensions Source: British Geological Survey, National Geoscience Information Service	A13SE (S)	0	1	504325 224125
	<b>Radon Potential - Radon Protection Measures</b> Protection Measure: No radon protective measures are necessary in the construction of new dwellings or extensions Source: British Geological Survey, National Geoscience Information Service	A13NW (W)	0	1	504323 224141

Map ID	Details	Quadrant Reference (Compass Direction)	Estimated Distance From Site	Contact	NGR
78	<p><b>Contemporary Trade Directory Entries</b></p> <p>Name: Nikki'S Ironing Service                      Location: 9, Partridge Close, Luton, LU4 0YD                      Classification: Ironing &amp; Home Laundry Services                      Status: <b>Inactive</b>                      Positional Accuracy: Automatically positioned to the address</p>	A13SE (E)	117	-	504510 224084
79	<p><b>Contemporary Trade Directory Entries</b></p> <p>Name: Iaf Services Ltd                      Location: 72, Swan Mead, Luton, LU4 0YR                      Classification: Carpet, Curtain &amp; Upholstery Cleaners                      Status: <b>Inactive</b>                      Positional Accuracy: Automatically positioned to the address</p>	A13SE (SE)	165	-	504482 223973
79	<p><b>Contemporary Trade Directory Entries</b></p> <p>Name: N &amp; A Tyre Services Ltd                      Location: 48, Swan Mead, Luton, LU4 0YR                      Classification: Tyre Dealers                      Status: <b>Inactive</b>                      Positional Accuracy: Automatically positioned to the address</p>	A13SE (SE)	168	-	504518 223998
80	<p><b>Contemporary Trade Directory Entries</b></p> <p>Name: Mac'S Clean                      Location: 1, Holkham Close, Luton, LU4 0YN                      Classification: Cleaning Services - Domestic                      Status: <b>Inactive</b>                      Positional Accuracy: Automatically positioned to the address</p>	A8NE (S)	301	-	504418 223788
81	<p><b>Contemporary Trade Directory Entries</b></p> <p>Name: A Cleaner Home                      Location: 137, Coverdale, Luton, LU4 9XG                      Classification: Carpet, Curtain &amp; Upholstery Cleaners                      Status: <b>Inactive</b>                      Positional Accuracy: Automatically positioned to the address</p>	A19SW (NE)	439	-	504694 224480
82	<p><b>Contemporary Trade Directory Entries</b></p> <p>Name: Softech                      Location: 5, Ladyhill, Luton, Bedfordshire, LU4 9LZ                      Classification: Water Softeners                      Status: <b>Inactive</b>                      Positional Accuracy: Automatically positioned to the address</p>	A18SE (NE)	556	-	504640 224685
83	<p><b>Contemporary Trade Directory Entries</b></p> <p>Name: Prestige Vehicles                      Location: 21, Wheatfield Road, Luton, LU4 0TP                      Classification: Car Dealers - Used                      Status: <b>Inactive</b>                      Positional Accuracy: Automatically positioned to the address</p>	A12SE (W)	593	-	503713 223916
84	<p><b>Contemporary Trade Directory Entries</b></p> <p>Name: Clean Up                      Location: 46, Boxted Close, Luton, LU4 9HW                      Classification: Cleaning Services - Domestic                      Status: <b>Inactive</b>                      Positional Accuracy: Automatically positioned to the address</p>	A14NW (E)	648	-	504987 224383
85	<p><b>Contemporary Trade Directory Entries</b></p> <p>Name: Haywards                      Location: Progress Way, Off Toddington Rd, Luton, Bedfordshire, LU4 9TR                      Classification: Car Breakers &amp; Dismantlers                      Status: <b>Inactive</b>                      Positional Accuracy: Manually positioned to the road within the address or location</p>	A18NE (N)	727	-	504622 224886
86	<p><b>Contemporary Trade Directory Entries</b></p> <p>Name: Prompt Waste Recycle &amp; Removals                      Location: 8, Loftus Close, Luton, LU4 0XE                      Classification: Recycling Centres                      Status: <b>Inactive</b>                      Positional Accuracy: Automatically positioned to the address</p>	A9SW (SE)	731	-	504732 223465
87	<p><b>Contemporary Trade Directory Entries</b></p> <p>Name: W P L Precision Engineering                      Location: Unit 2-3, Bay Close, Progress Way, Luton, LU4 9UP                      Classification: Precision Engineers                      Status: <b>Inactive</b>                      Positional Accuracy: Automatically positioned to the address</p>	A18NE (N)	743	-	504579 224919
87	<p><b>Contemporary Trade Directory Entries</b></p> <p>Name: Jobyco                      Location: 2-3, BAY CLOSE, LUTON, LU4 9UP                      Classification: Freight Forwarders                      Status: <b>Active</b>                      Positional Accuracy: Automatically positioned to the address</p>	A18NE (N)	743	-	504579 224919