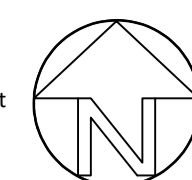


**General Notes**

This drawing is to be used in conjunction with all relevant drawings, specifications and details.

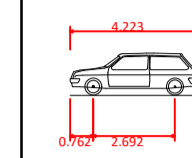
All dimensions are in metres unless noted otherwise.

Do not scale from this drawing.

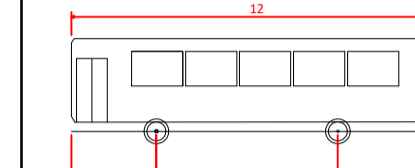


**Drawing Key**

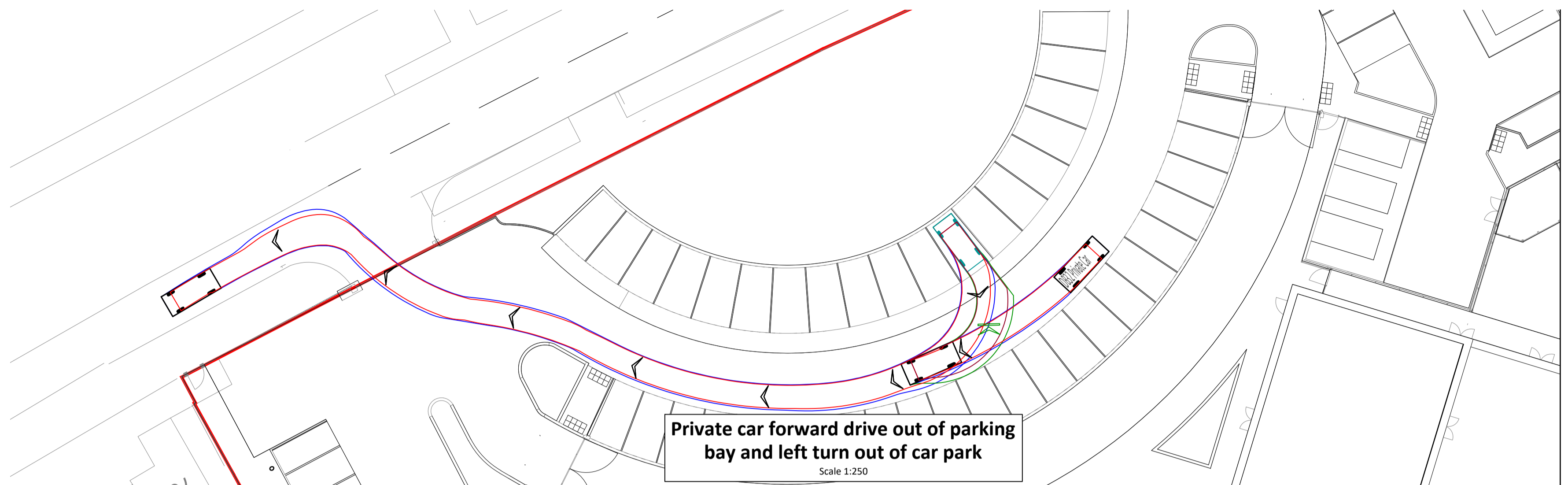
- Site Boundary
- Path of Wheels
- Path of Vehicle Overhang
- Centreline



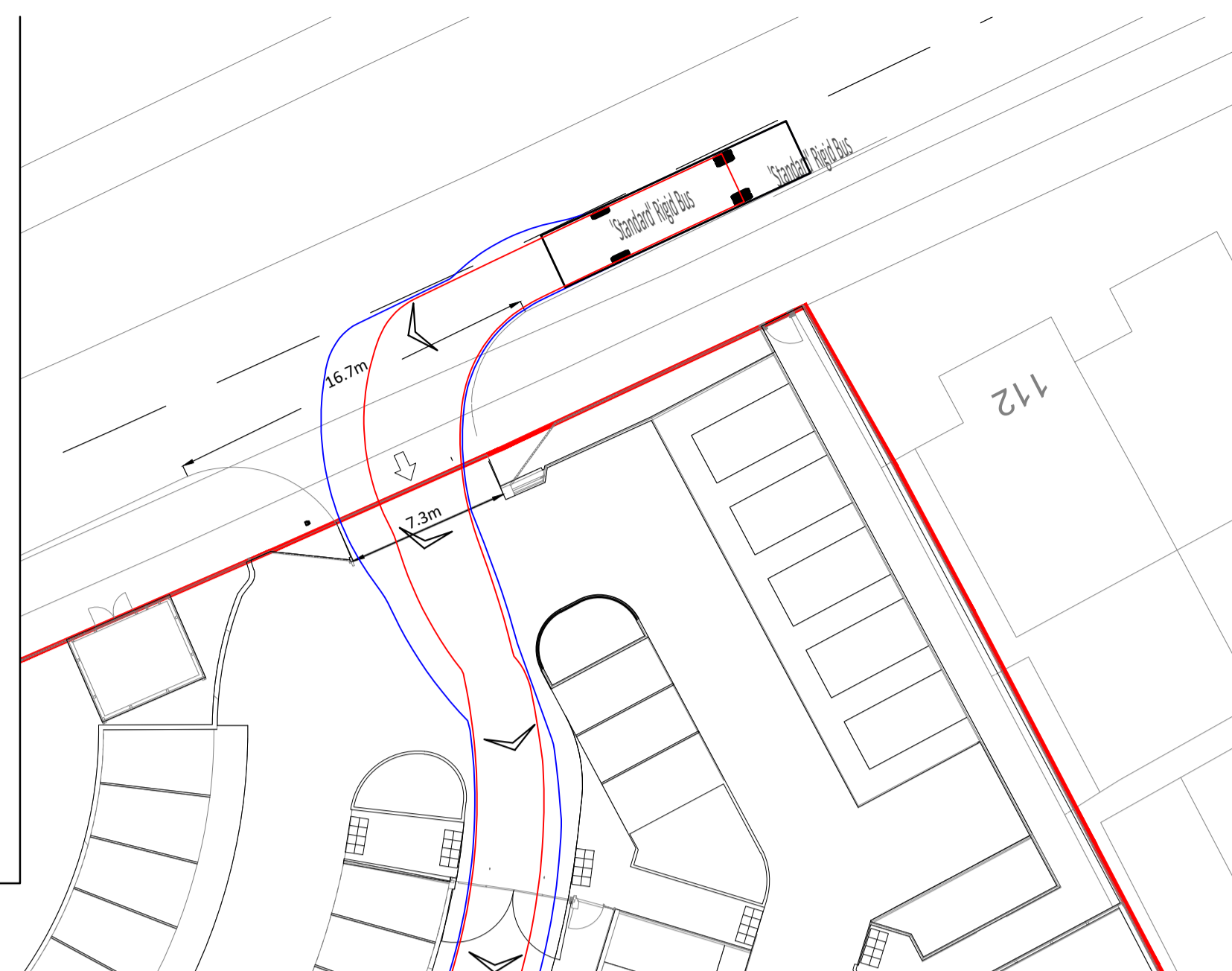
**DB32 Private Car**  
 Overall Length 4.233m  
 Overall Width 1.715m  
 Overall Body Height 1.382m  
 Min Body Ground Clearance 0.233m  
 Max Track Width 1.525m  
 Lock to lock time 4.00s  
 Kerb to Kerb Turning Radius 5.780m



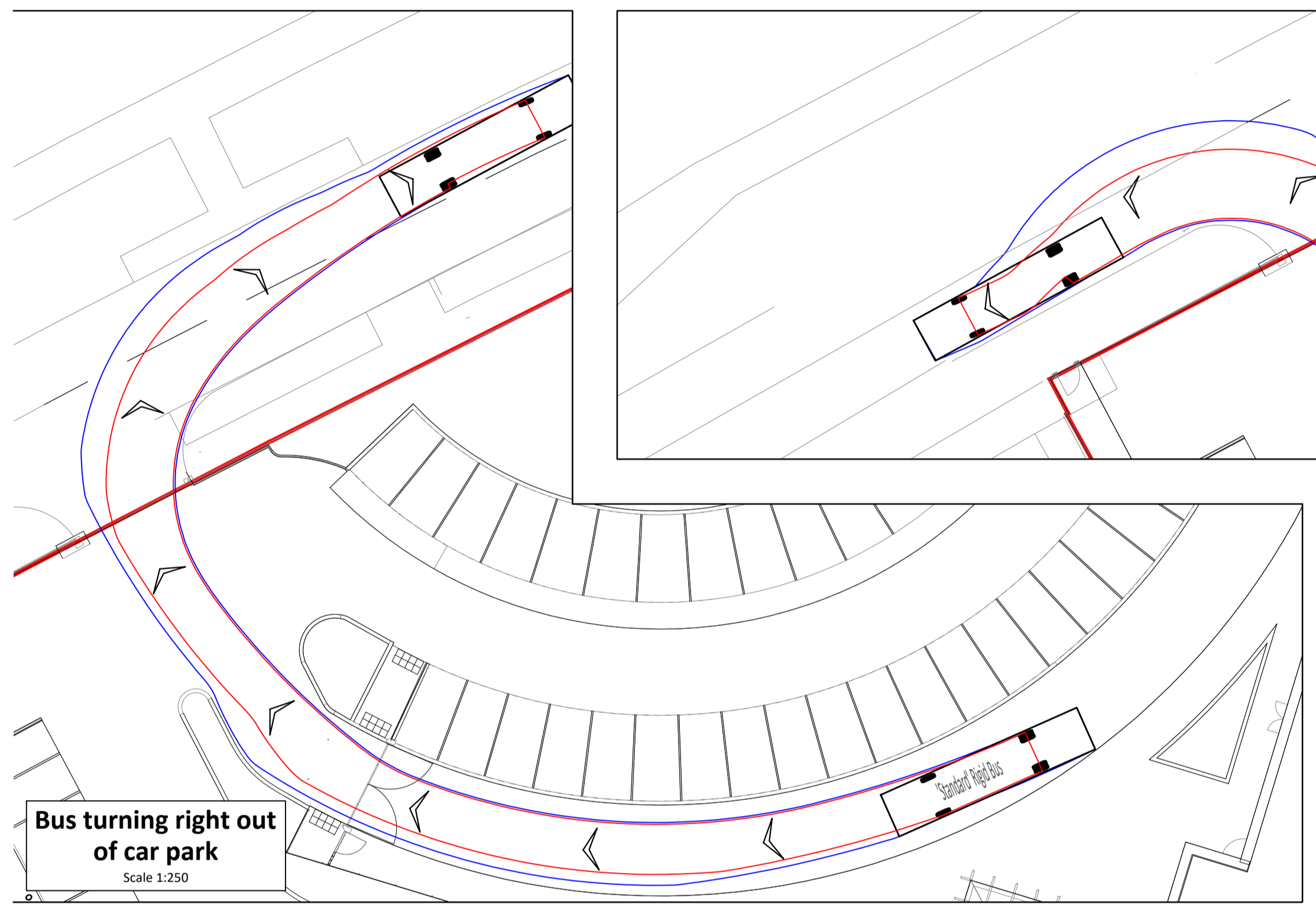
**'Standard' Rigid Bus**  
 Overall Length 12.000m  
 Overall Width 2.550m  
 Overall Body Height 3.065m  
 Min Body Ground Clearance 0.305m  
 Track Width 2.350m  
 Lock to lock time 4.00s  
 Wall to Wall Turning Radius 10.771m



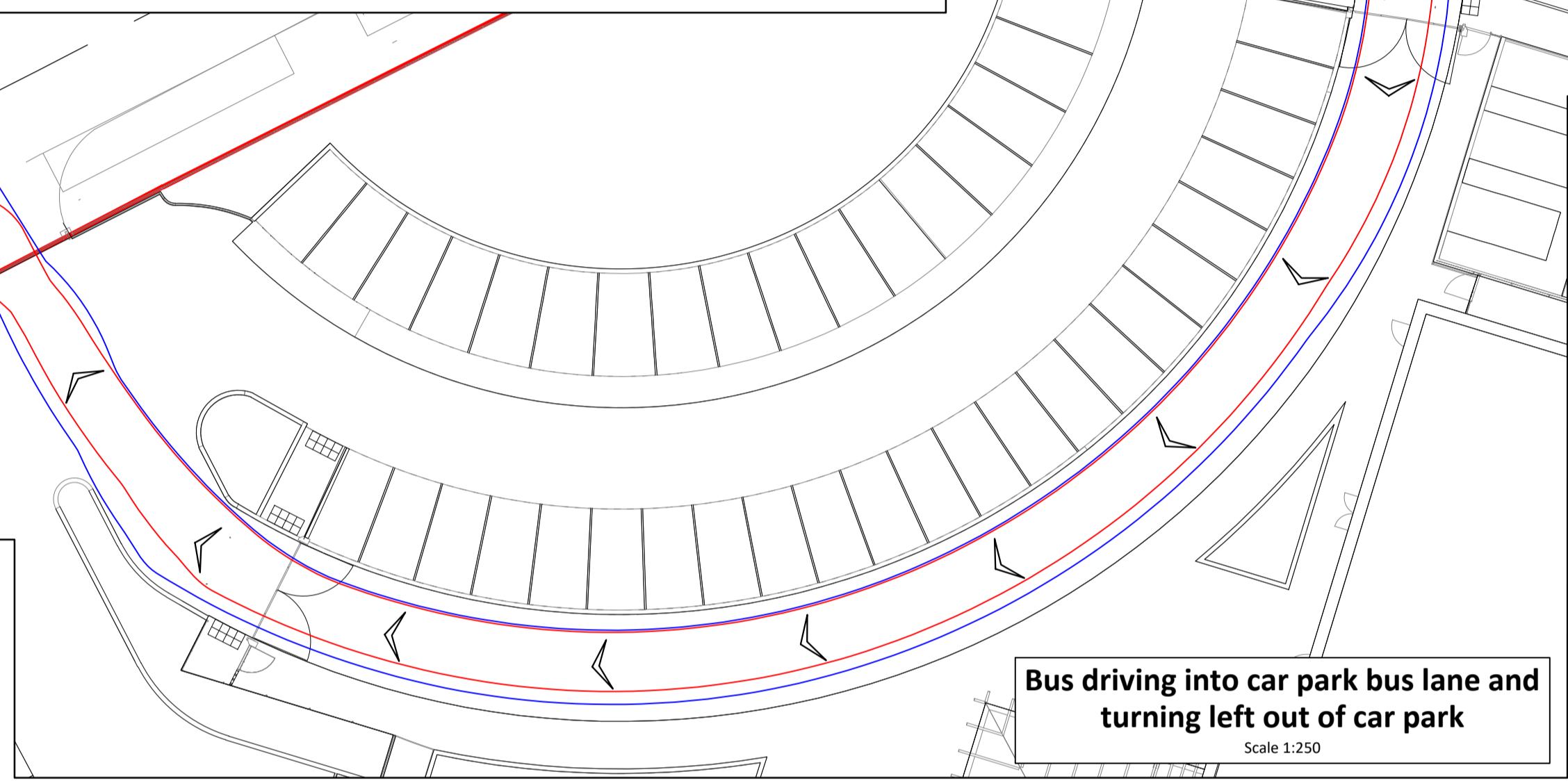
**Private car forward drive out of parking bay and left turn out of car park**  
 Scale 1:250



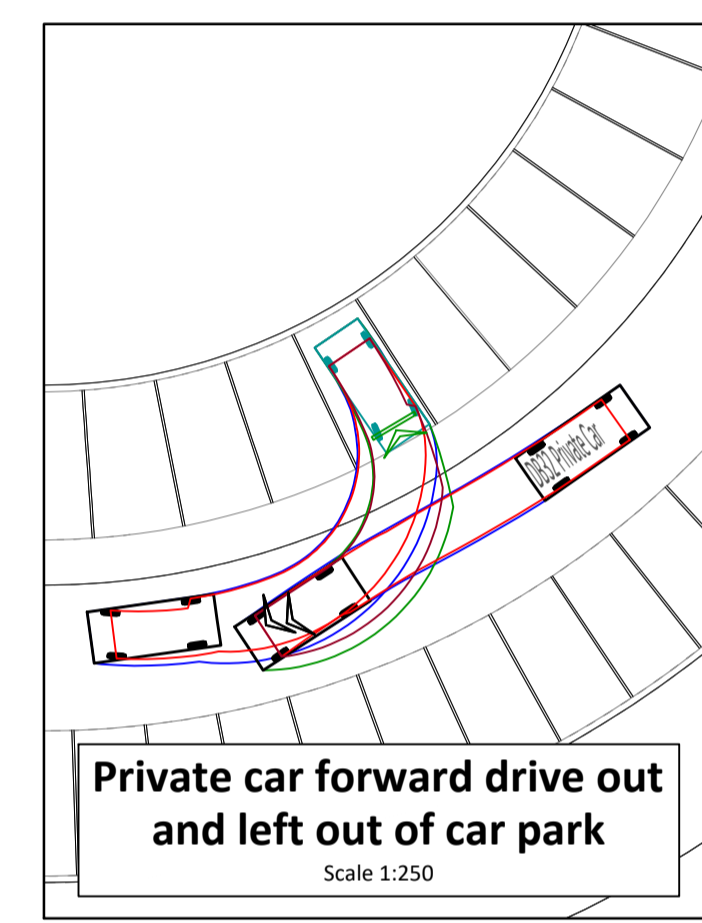
**Bus driving into car park bus lane and turning left out of car park**  
 Scale 1:250



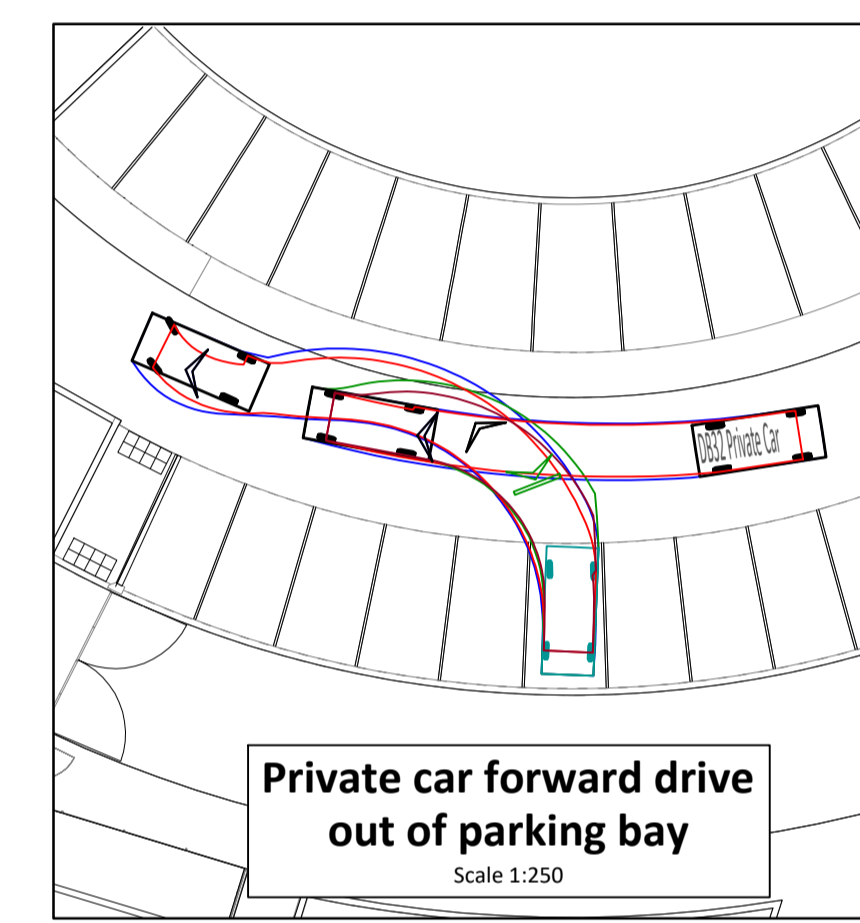
**Bus turning right out of car park**  
 Scale 1:250



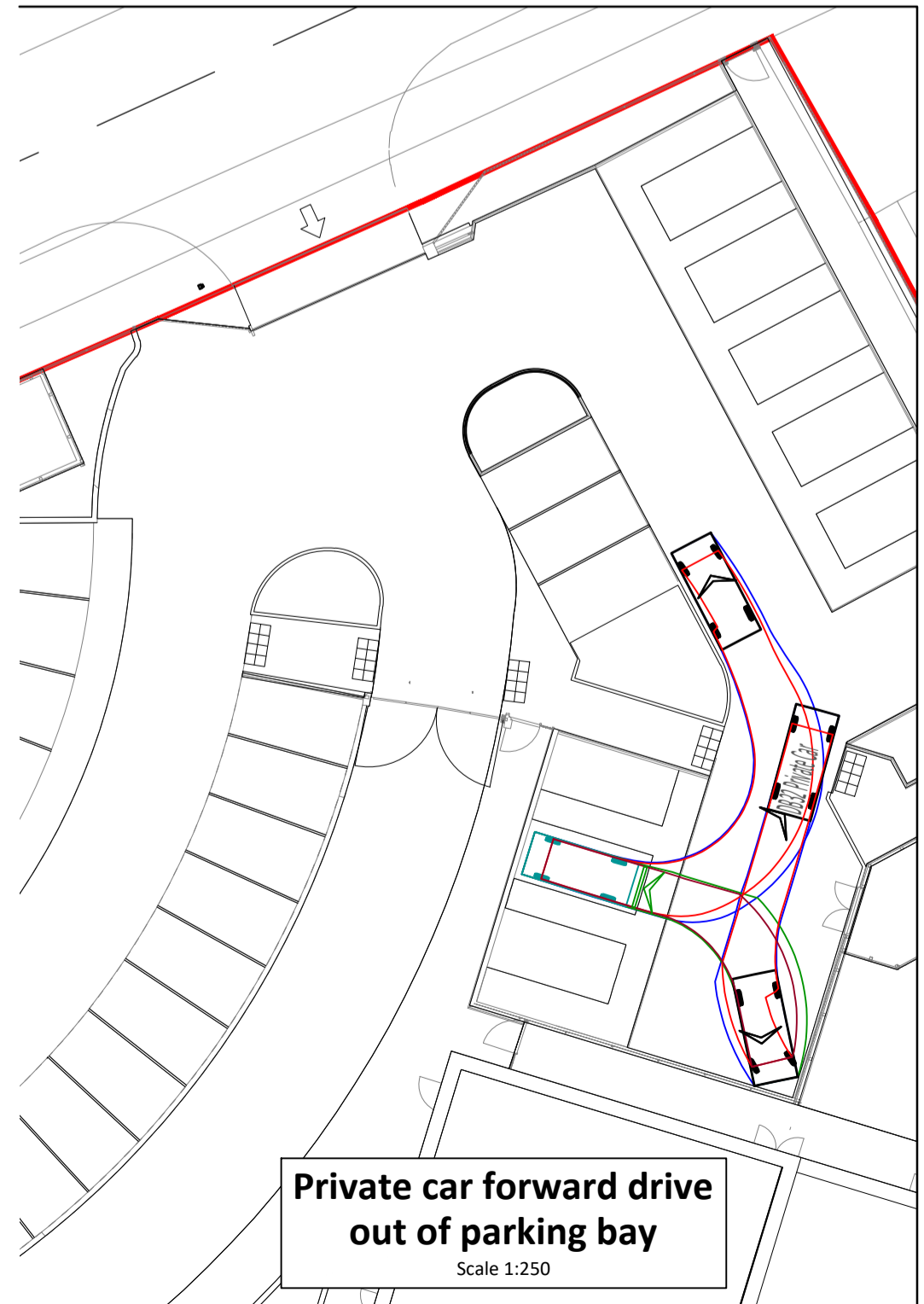
**Private car forward drive out of parking bay**  
 Scale 1:250



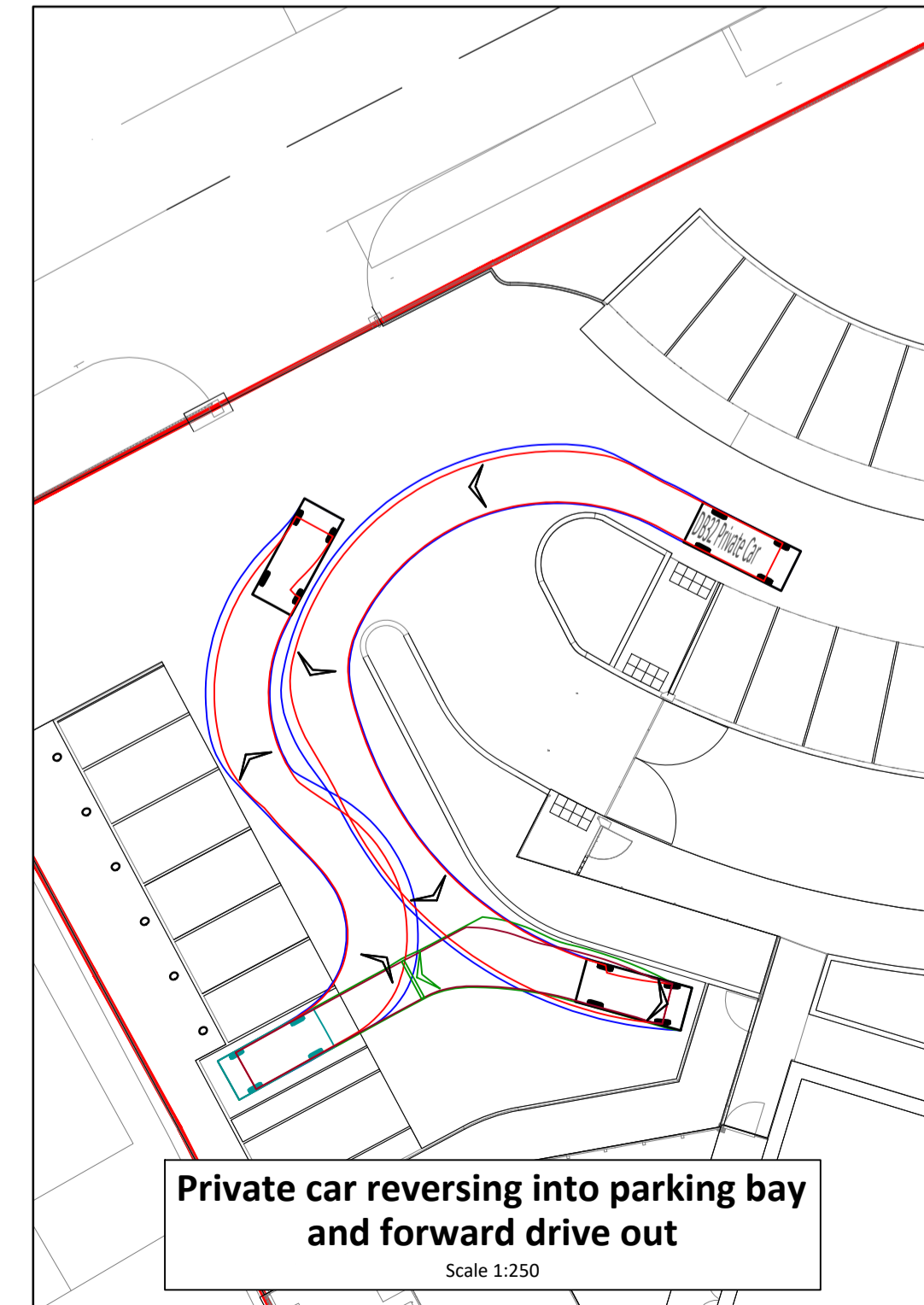
**Private car forward drive out and left out of car park**  
 Scale 1:250



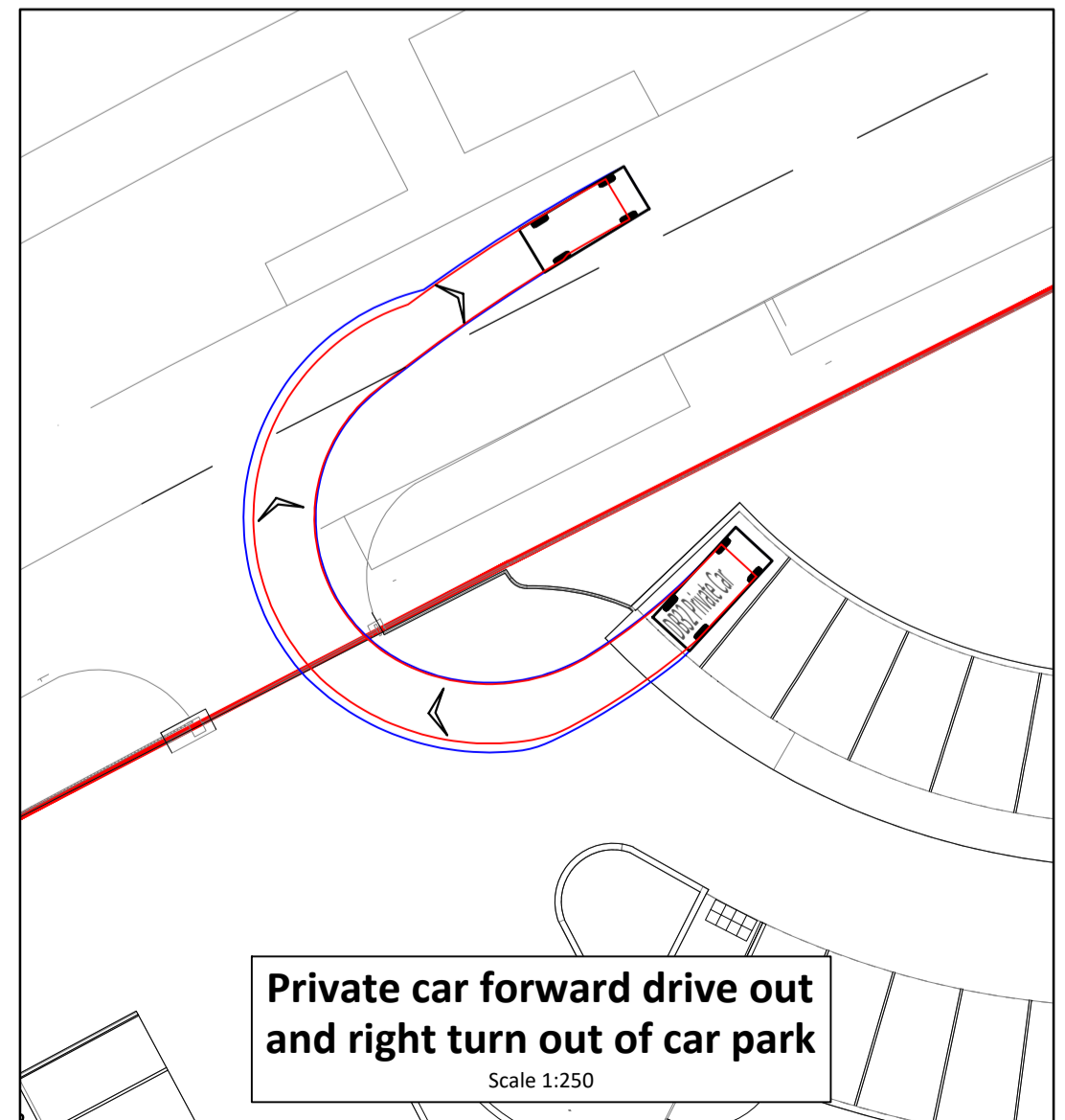
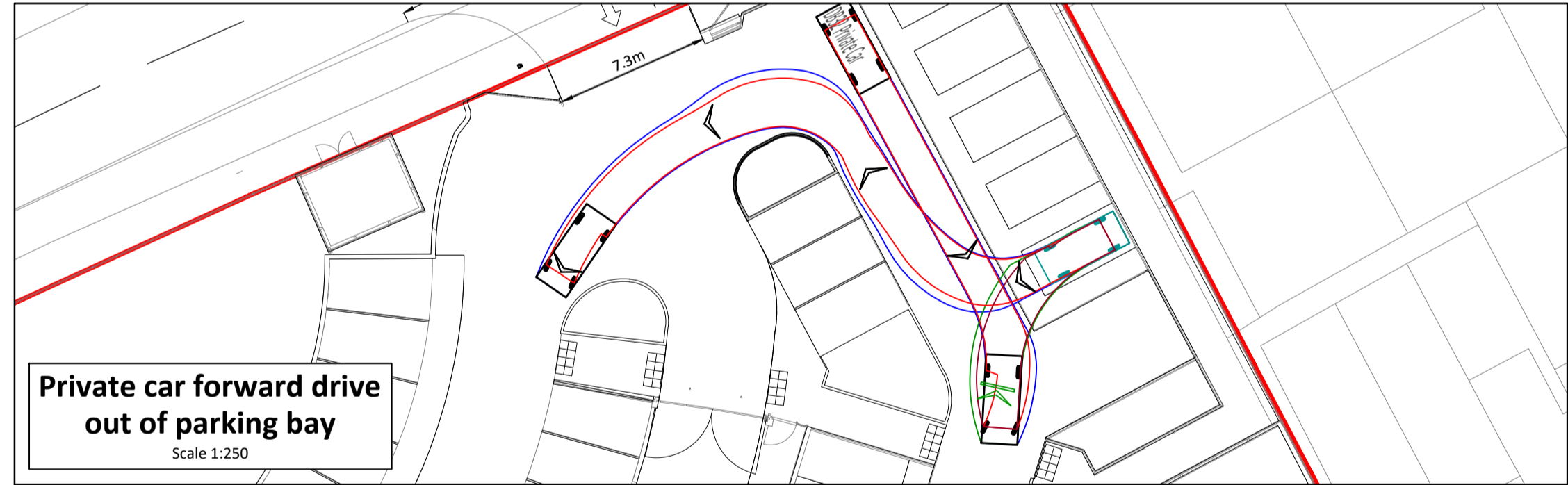
**Private car forward drive out of parking bay**  
 Scale 1:250



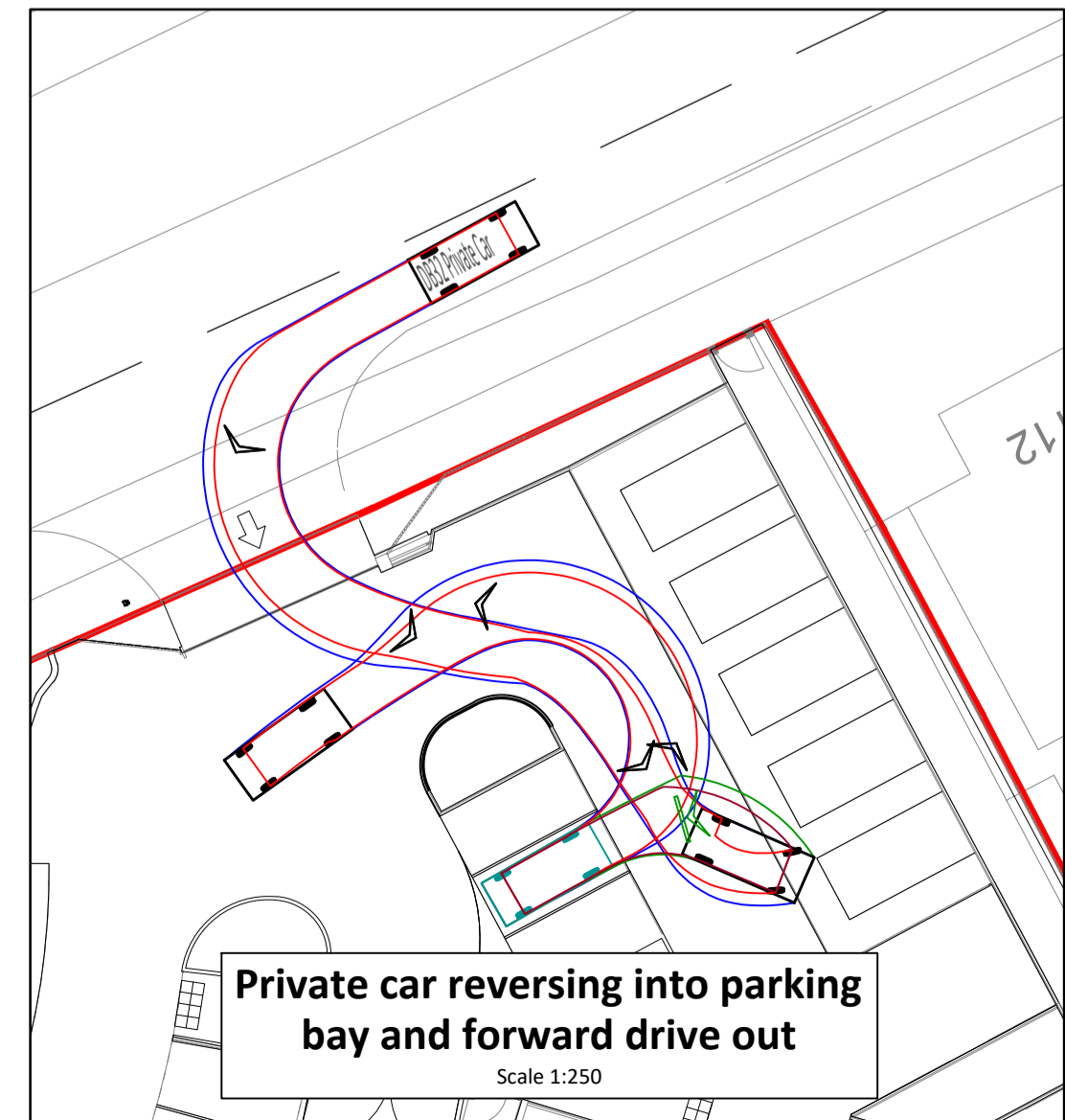
**Private car forward drive out of parking bay**  
 Scale 1:250



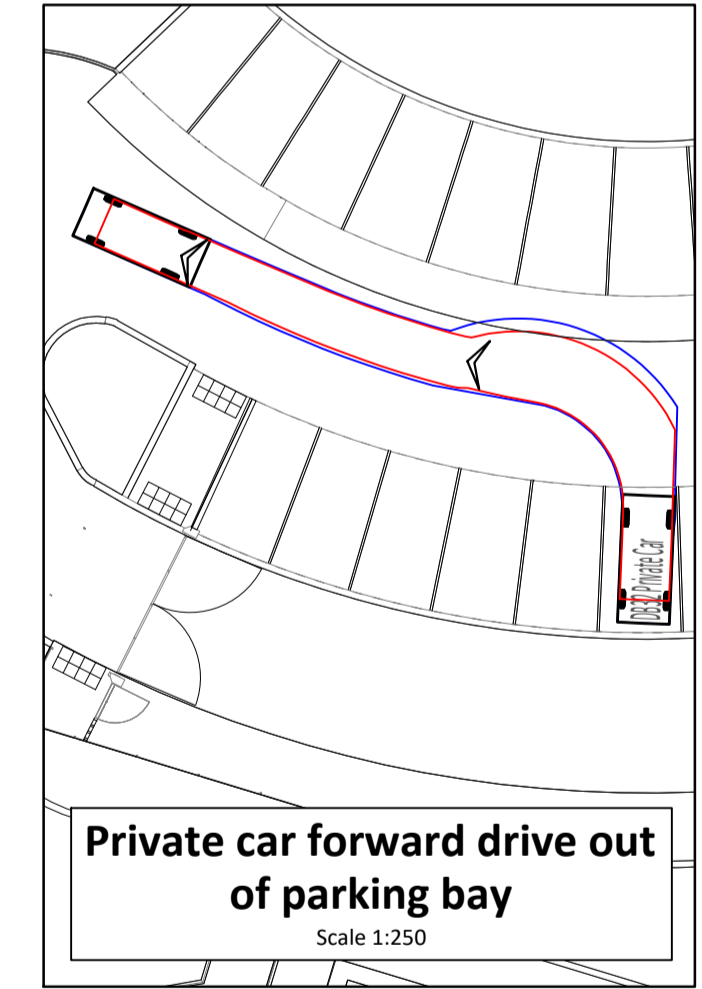
**Private car reversing into parking bay and forward drive out**  
 Scale 1:250



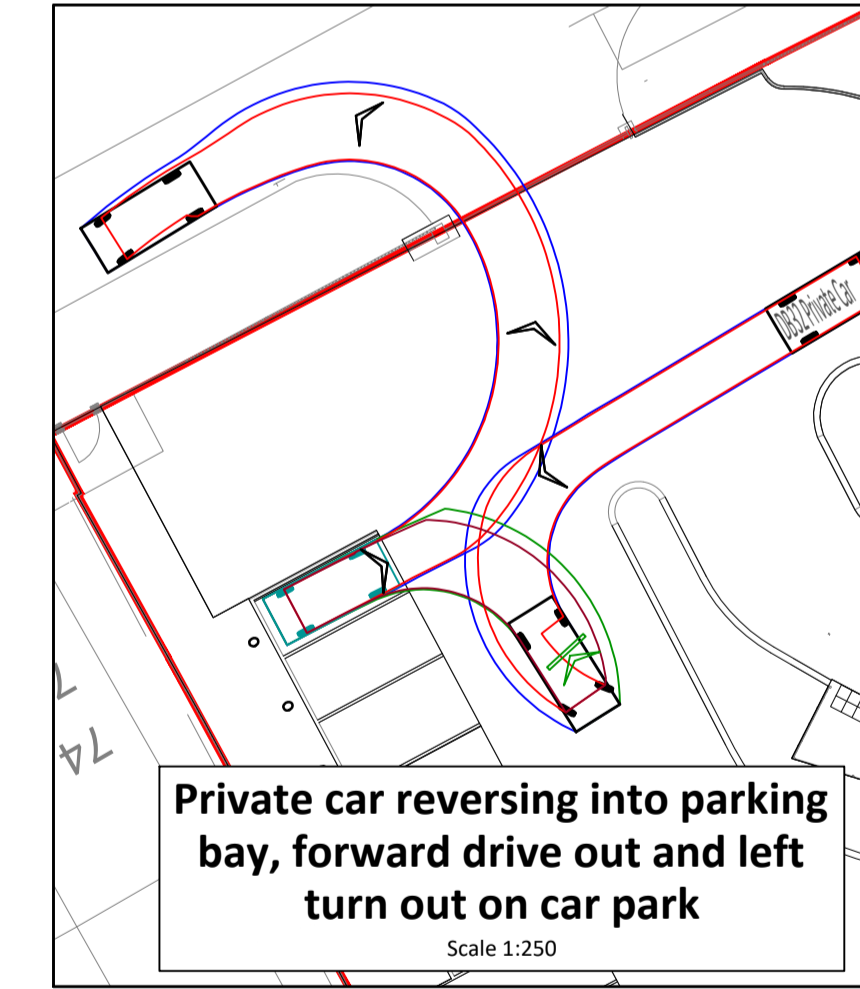
**Private car forward drive out and right turn out of car park**  
 Scale 1:250



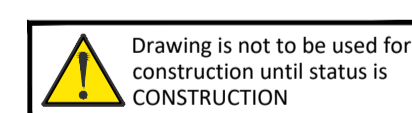
**Private car reversing into parking bay and forward drive out**  
 Scale 1:250



**Private car forward drive out of parking bay**  
 Scale 1:250



**Private car reversing into parking bay, forward drive out and left turn out on car park**  
 Scale 1:250



Drawing is not to be used for construction until status is CONSTRUCTION

Rev A Drawing has been updated to suit site layout arrangement. By EH Checked TL 14.12.2023

**jpp**  
 Infrastructure Design  
 Structural Engineering  
 Development Planning  
 Professional Advice  
 Geotechnical & Environmental  
 Surveying

Milton Keynes  
 B2A, Denbigh Business Park, 23 First Avenue,  
 Denbigh, Milton Keynes. MK1 1DN  
 T: 01908 889433

Northampton Warwick Poole  
 E: mail@jppuk.net W: jppuk.net

Client Luton Borough Council  
 Project New SEN School  
 Kestrel Way, Luton  
 Title Swept Path Analysis

Scale at A1 1:250	Drawn by HH	Checked by TL	Date May 2023
Status FOR PLANNING	Project ref 25910	Drawing no. 103	Revision A