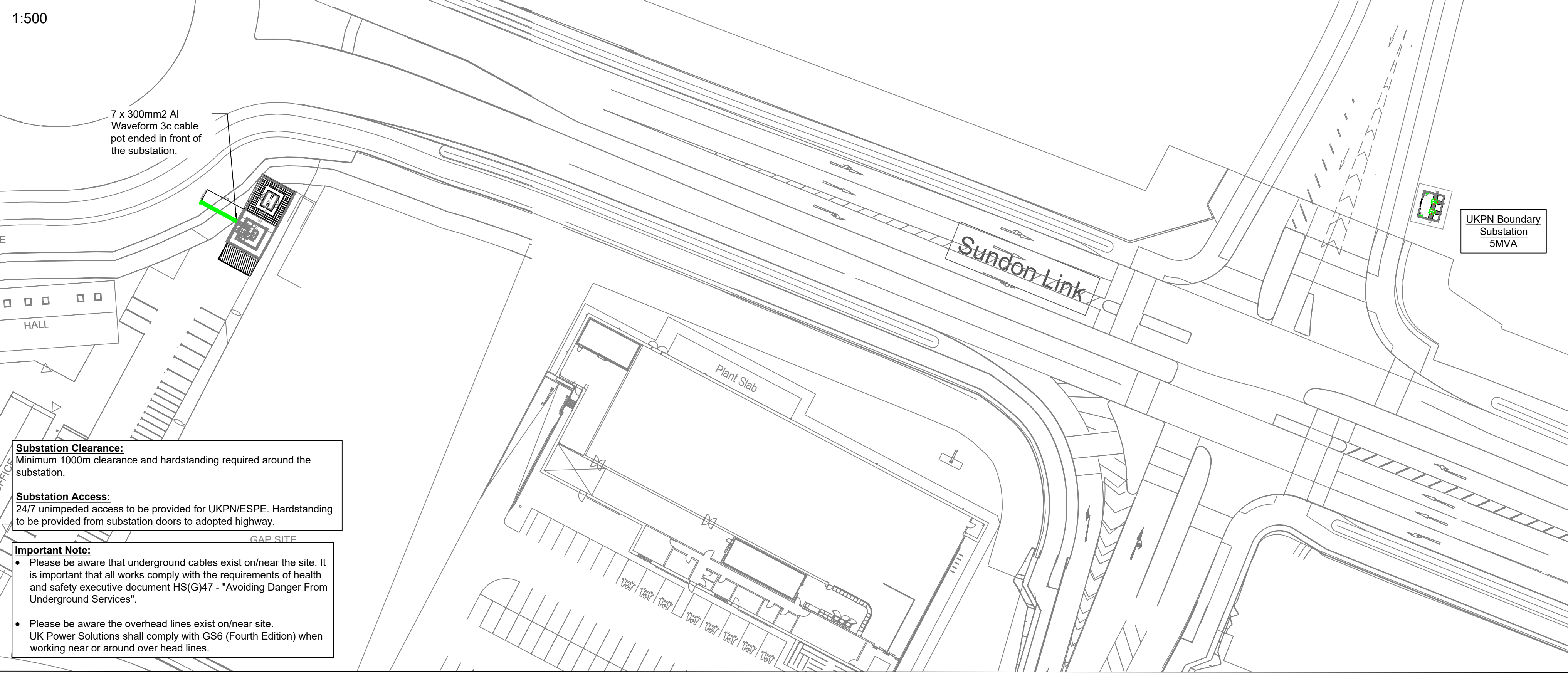


1:500

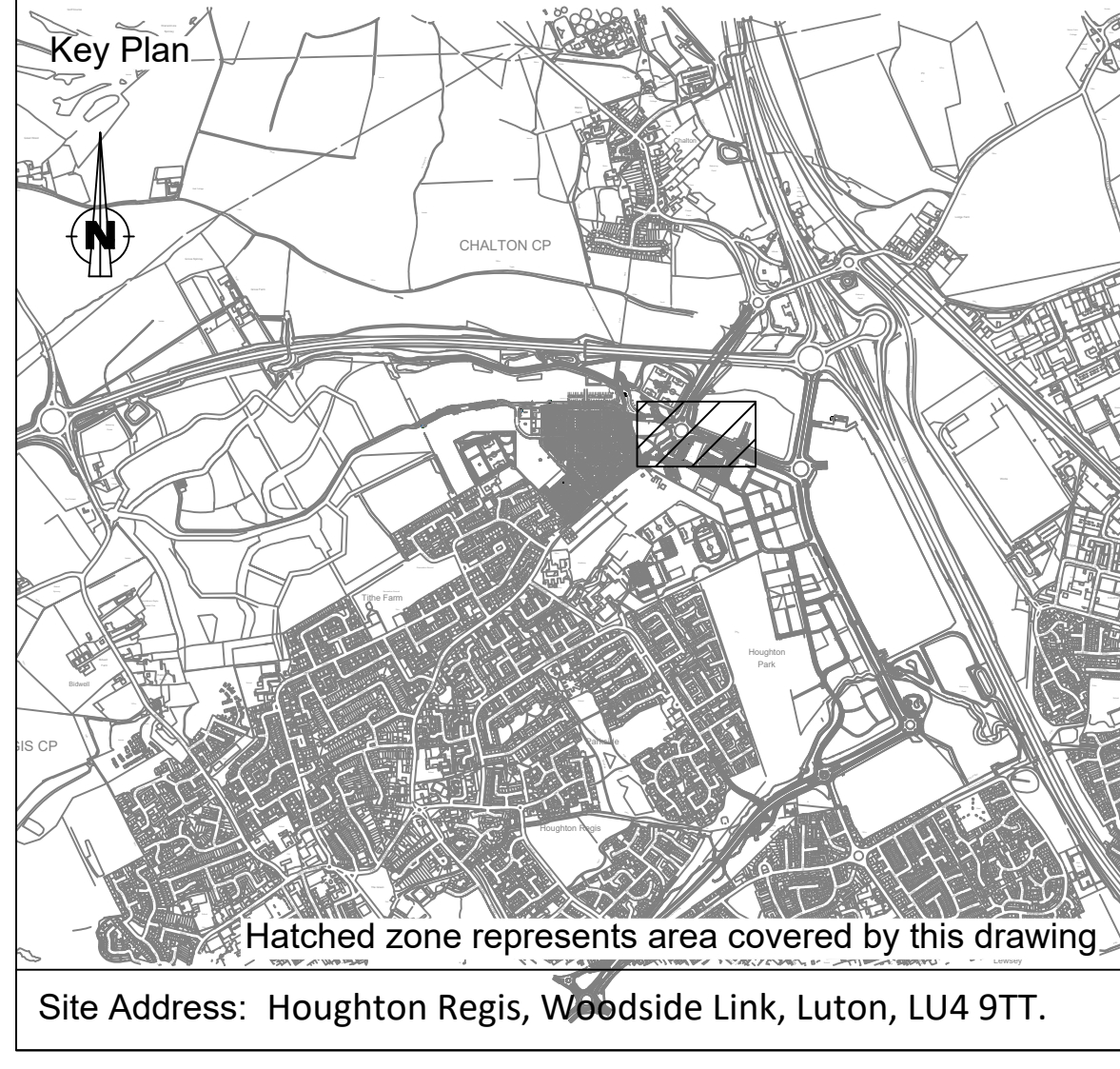


**Substation Clearance:**  
Minimum 1000m clearance and handstanding required around the substation.

**Substation Access:**  
24/7 unimpeded access to be provided for UKPN/ESPE. Handstanding to be provided from substation doors to adopted highway.

**Important Note:**

- Please be aware that underground cables exist on/near the site. It is important that all works comply with the requirements of health and safety executive document HS(G)47 - "Avoiding Danger From Underground Services".
- Please be aware the overhead lines exist on/near site. UK Power Solutions shall comply with GS6 (Fourth Edition) when working near or around over head lines.



Site Address: Houghton Regis, Woodside Link, Luton, LU4 9TT.

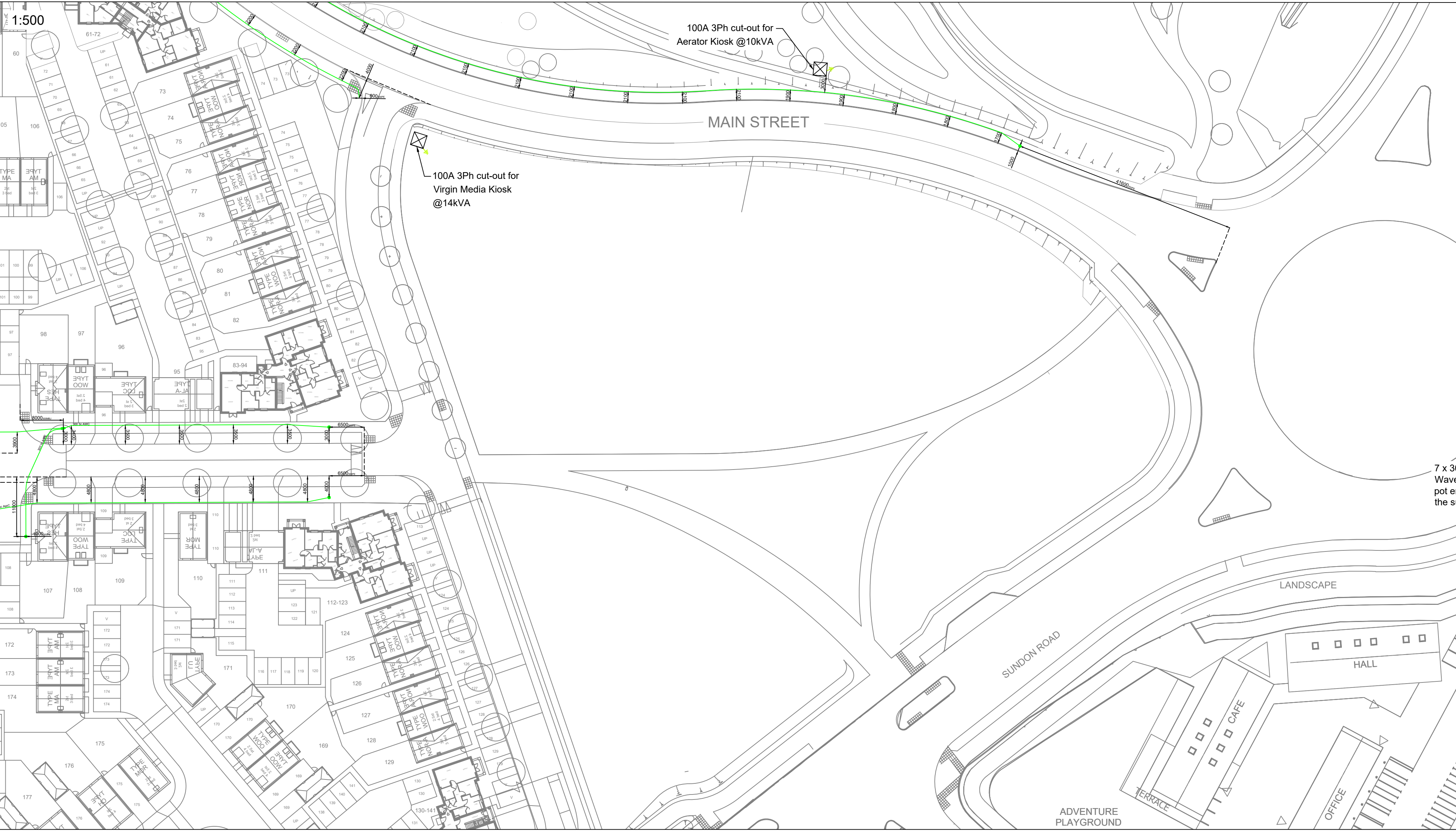
Electrical As Laid Symbols & Abbreviations		
Symbol	Name & Abbreviation	Colour Variations
—	Mains Cable	Red - HV
---	Existing Mains Cable	Red - HV
----	Abandoned Mains Cable	Red - HV
	Mains Breech Joint (MBJ)	Red - HV
—●—	Mains Straight Joint (STJ)	Red - HV
—○—	Service Joint (SJ)	-
(M)	Electrical Meter	-
---	Cable Duct	-
---	Datum Line	-
●	Point of Connection (POC)	Red - HV Magenta - DNO/IDNO (Drawing dependent)
●	Pot End (PE)	Red - HV
●	Service Pot End (SPE)	-
○	2 Way Link Box (LB)	Magenta - DNO/IDNO (Drawing dependent)
○	4 Way Link Box (LB)	Magenta - DNO/IDNO (Drawing dependent)
FP	Feeder Pillar (FP)	-
+	Streetlight (SL/C)	-
XXXXXX	Building Entry (BE)	-
↔	Line of Sight	-

Please note that as of 02/10/2020 all NEW UKPS claims to the IDNO network will include the cable size applicable to newly installed mains cable. This will be reflected in the revision note.

- General Notes:**
- UKPN Ref:  
HV POC 1: 8200027169/QID 3200019811  
HV POC 2: 8600010522 /QID 3600003054
  - ESPE Ref:  
POC1: ESPE021747-1  
POC 2: ESPE021747-2
  - Substation Type: Freestanding/Brick Built
  - For Project Scope and Material Specifications, please refer to UKP6896 - Project Information Document IDNO.
- Please see DWG300 - Sheet 7/7 for:**
- Trench Cross Sections
  - Cable Data

Site Layout & Cable Routes

1:500



Cable Installation Data			
Cable Type	Max Pulling Tension	Minimum Bending Radius (On Route)	Minimum Duct Size (ID)
25mm <sup>2</sup> /35mm <sup>2</sup> Al Split Concentric 1Ph	Manual	125mm	38mm
35mm <sup>2</sup> Al Split Concentric 3Ph	Manual	210mm	50mm
95mm <sup>2</sup> Al Waveform 3c	3000N	550mm	125mm
185mm <sup>2</sup> Al Waveform 3c	7000N	700mm	125mm
300mm <sup>2</sup> Al Waveform 3c	7000N	850mm	125mm
185mm <sup>2</sup> Al XLPE Triplex 11kV	16300N	700mm	125mm

Site Layout & Cable Routes - Continuous

REV	AMENDMENT	DATE	BY
0	First Issue	29/10/20	CEO

**UKPS**  
UK POWER SOLUTIONS  
The Utility Connection Company

River View House, Bonds Mill Estate, Bristol Road  
Stonehouse, Gloucestershire GL10 3RF

4th Floor, West World, West Gate  
Ealing, London W5 1DT

www.ukpowersolutions.co.uk

Client	HRMC Ltd.		
Project	Linmere		
Title	As Laid Plan - IDNO		
Design & Planning Engineer	Pelin Morgan	Contact No.	08452 577 105
Project Manager	Brad Hogan	Contact No.	07814 516 036
Drawn By	CEO	Checked By	---
Scale	As Shown	Sheet No.	2/7
Original Size	A1		
Drawing No.	UKP6896 - DWG903		Rev
Client Ref.	-		
Drawing Status	For Information - As Installed/Built		



1:500



**Substation Clearance:**  
Minimum 100m clearance and hardstanding required around the substation.

**Substation Access:**  
24/7 unimpeded access to be provided for UKPN/ESPE. Hardstanding to be provided from substation doors to adopted highway.

**Important Note:**  
• Please be aware that underground cables exist on/near the site. It is important that all works comply with the requirements of health and safety executive document HS(G)47 - "Avoiding Danger From Underground Services".  
• Please be aware the overhead lines exist on/near site. UK Power Solutions shall comply with GS6 (Fourth Edition) when working near or around overhead lines.

Electrical As Laid Symbols & Abbreviations		
Symbol	Name & Abbreviation	Colour Variations
—	Mains Cable	Red - HV
---	Existing Mains Cable	Red - HV
----	Abandoned Mains Cable	Red - HV
	Mains Breech Joint (MBJ)	Red - HV
—●—	Mains Straight Joint (MSJ)	Red - HV
○	Service Joint (SJ)	-
Ⓜ	Electrical Meter	-
---	Cable Duct	-
---	Datum Line	-
●	Point of Connection (POC)	Red - HV Magenta - DNO/IDNO (Drawing dependent)
●	Pot End (PE)	Red - HV
●	Service Pot End (SPE)	-
○	2 Way Link Box (L2B)	Magenta - DNO/IDNO (Drawing dependent)
○	4 Way Link Box (L4B)	Magenta - DNO/IDNO (Drawing dependent)
FP	Feeder Pillar (FP)	-
⊕	Streetlight (SL/C)	-
XXXX	Building Entry (BE)	-
↖	Line of Sight	-

Please note that as of 02/10/2020 All NEW UKPS claims to the IDNO network will include the cable size applicable to newly installed mains cable. This will be reflected in the revision note.

**General Notes:**

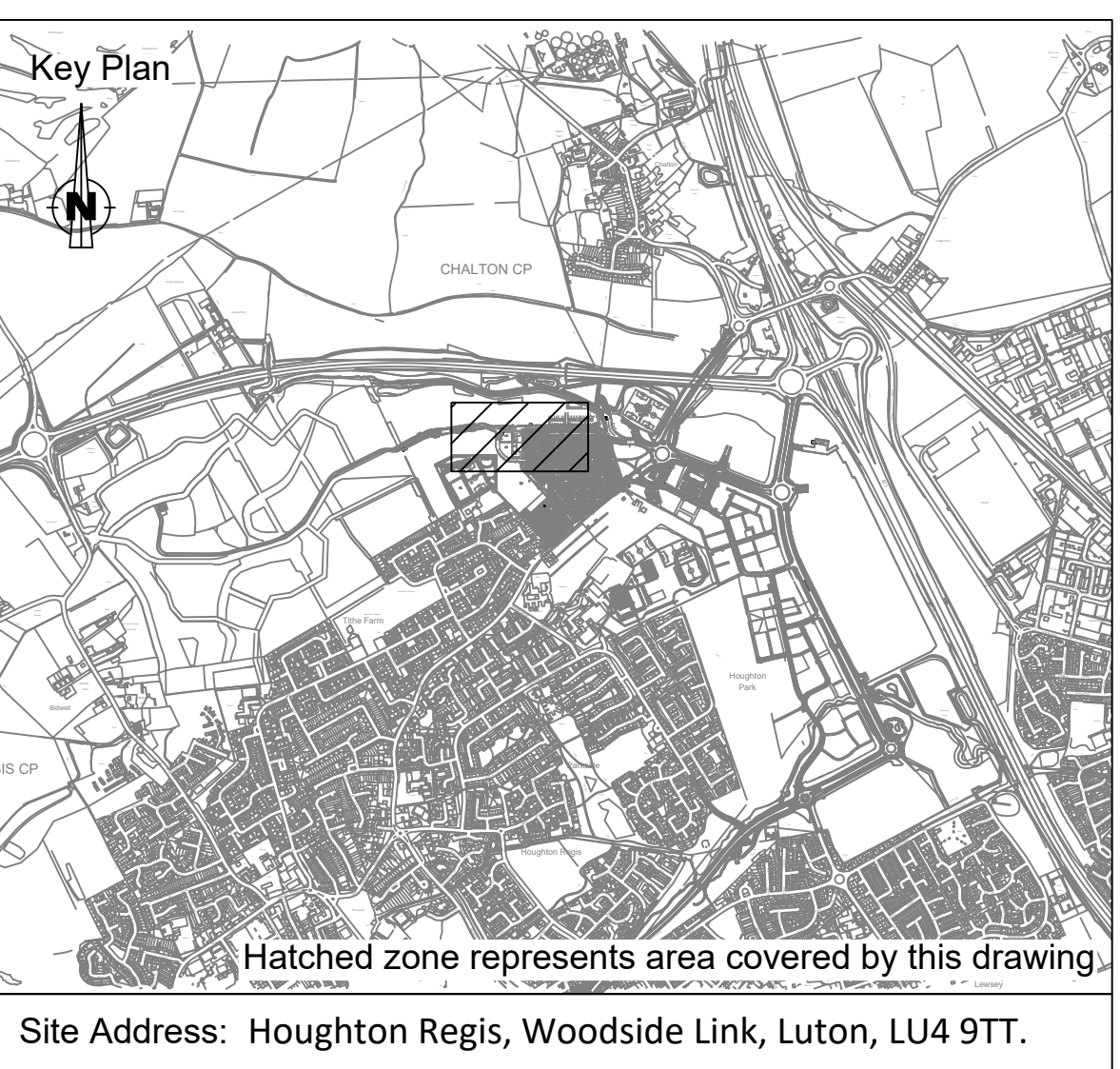
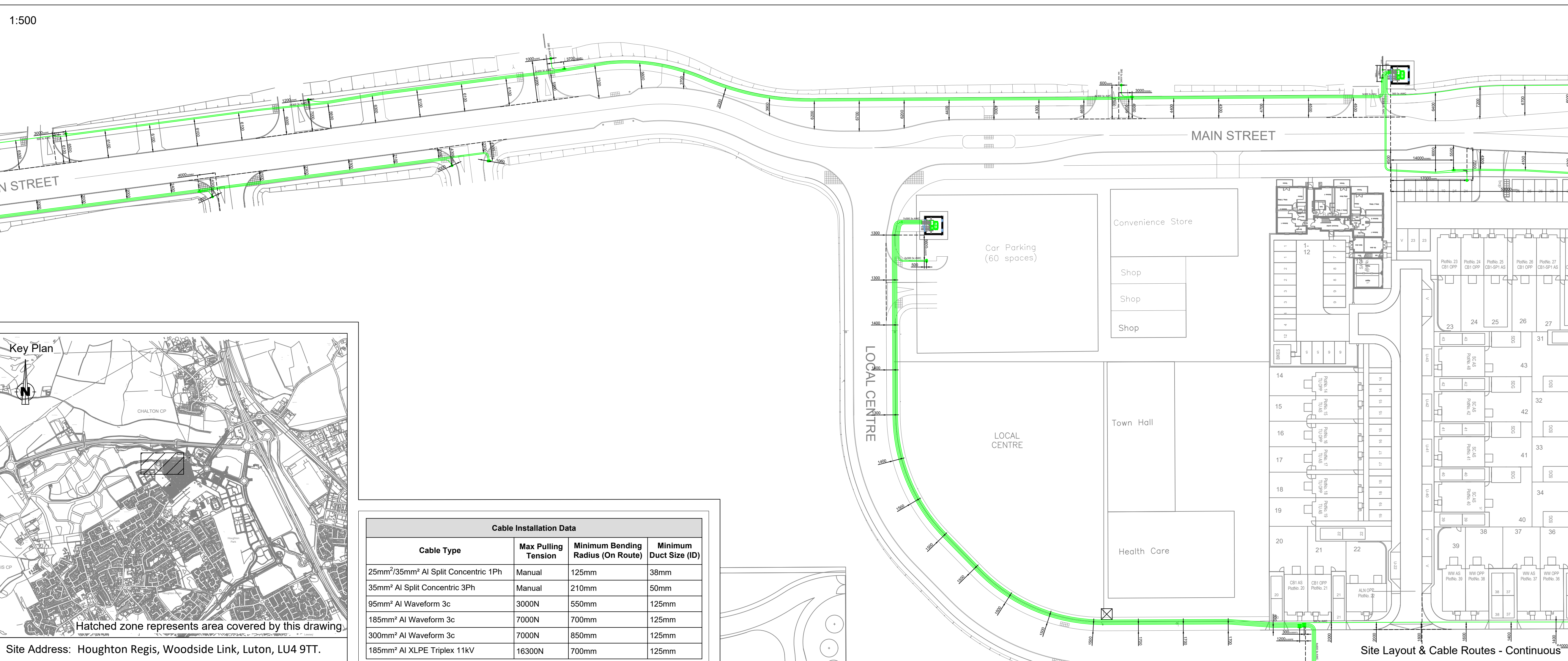
- UKPN Ref: HV POC 1: 8200027169/QID 3200019811  
HV POC 2: 8600010522/QID 3600003054
- ESPE Ref: POC1: ESPE021747-1  
POC2: ESPE021747-2
- Substation Type: Freestanding/Brick Built
- For Project Scope and Material Specifications, please refer to UKP6896 - Project Information Document IDNO.

Please see DWG300 - Sheet 7/7 for:

- Trench Cross Sections
- Cable Data

Site Layout & Cable Routes - Continuous

1:500



Cable Installation Data			
Cable Type	Max Pulling Tension	Minimum Bending Radius (On Route)	Minimum Duct Size (ID)
25mm <sup>2</sup> /35mm <sup>2</sup> Al Split Concentric 1Ph	Manual	125mm	38mm
35mm <sup>2</sup> Al Split Concentric 3Ph	Manual	210mm	50mm
95mm <sup>2</sup> Al Waveform 3c	3000N	550mm	125mm
185mm <sup>2</sup> Al Waveform 3c	7000N	700mm	125mm
300mm <sup>2</sup> Al Waveform 3c	7000N	850mm	125mm
185mm <sup>2</sup> Al XLPE Triplex 11kV	16300N	700mm	125mm

Site Layout & Cable Routes - Continuous

0	First Issue	29/10/20	CEO
	<ul style="list-style-type: none"> <li>Mains cable route updated</li> <li>Cable sizes added to drawing</li> <li>Mains joint positions clarified and dimensioned</li> </ul>		

REV	AMENDMENT	DATE	BY
-----	-----------	------	----

**UKPS**  
UK POWER SOLUTIONS  
The Utility Connection Company

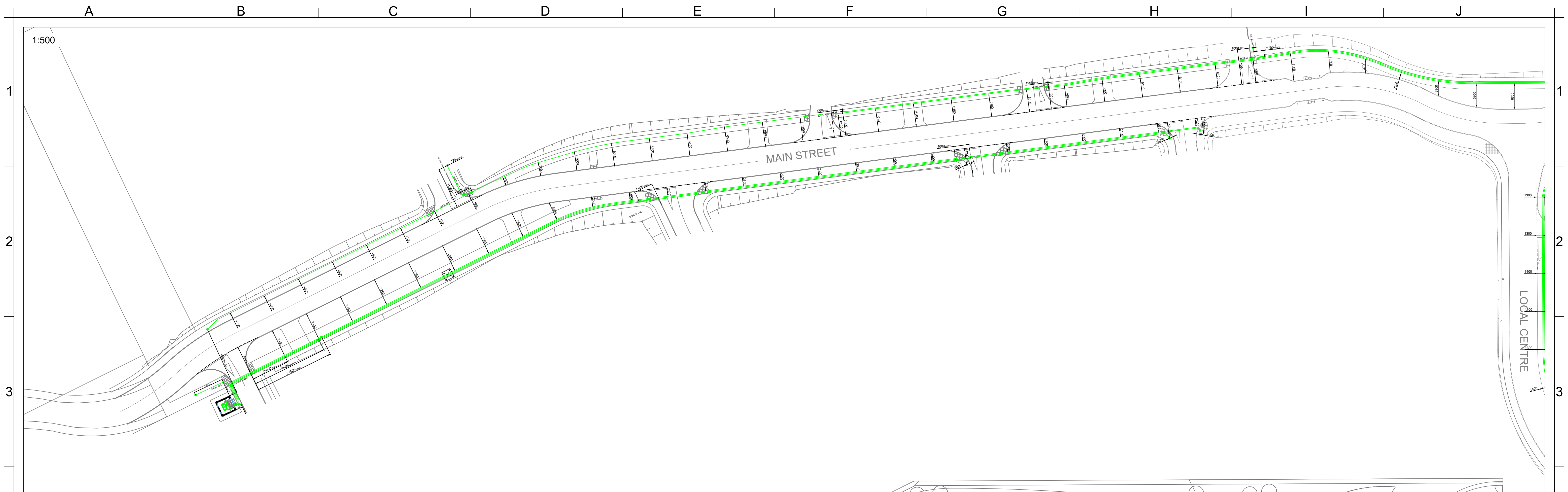
River View House, Bonds Mill Estate, Bristol Road Stonehouse, Gloucestershire GL10 3RF

4th Floor, West World, West Gate Ealing, London W5 1DT

www.ukpowersolutions.co.uk

Client	HRMC Ltd.		
Project	Linmere		
Title	As Laid Plan - IDNO		
Design & Planning Engineer	Peilin Morgan	Contact No.	08452 577 105
Project Manager	Brad Hogan	Contact No.	07814 516 036
Drawn By	CEO	Checked By	---
Scale	As Shown	Sheet No.	3/7
Original Size	A1		
Drawing No.	UKP6896 - DWG903		Rev
Client Ref.	-		
Drawing Status	For Information - As Installed/Built		





Site Layout & Cable Routes - Continuous

0	First Issue	29/10/20	CEO
REV	AMENDMENT	DATE	BY

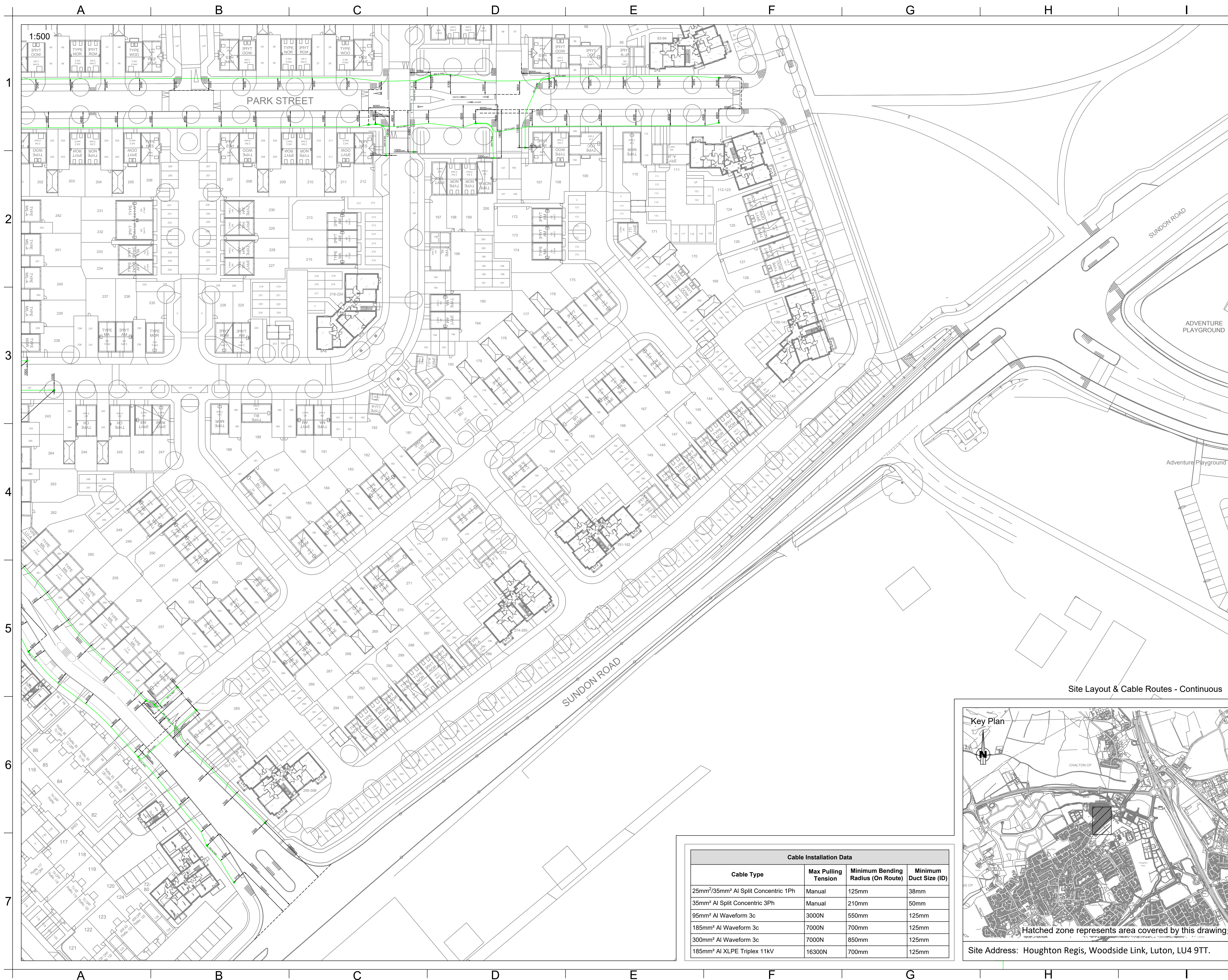
**UKPS**  
**UK POWER SOLUTIONS**  
 The Utility Connection Company  
 River View House, Bonds Mill Estate, Bristol Road  
 Stonehouse, Gloucestershire GL10 3RF  
 4th Floor, West World, West Gate  
 Ealing, London W5 1DT  
[www.ukpowersolutions.co.uk](http://www.ukpowersolutions.co.uk)

Client: **HRMC Ltd.**  
 Project: **Linmere**  
 Title: **As Laid Plan - IDNO**

Design & Planning Engineer Pelin Morgan	Contact No. 08452 577 105
Project Manager Brad Hogan	Contact No. 07814 516 036
Drawn By CEO	Checked By --
Scale As Shown	Original Size A1
Drawing No. UKP6896 - DWG903	Rev 0
Drawing Status <b>For Information - As Installed/Built</b>	

Cable Installation Data			
Cable Type	Max Pulling Tension	Minimum Bending Radius (On Route)	Minimum Duct Size (ID)
25mm <sup>2</sup> /35mm <sup>2</sup> Al Split Concentric 1Ph	Manual	125mm	38mm
35mm <sup>2</sup> Al Split Concentric 3Ph	Manual	210mm	50mm
95mm <sup>2</sup> Al Waveform 3c	3000N	550mm	125mm
185mm <sup>2</sup> Al Waveform 3c	7000N	700mm	125mm
300mm <sup>2</sup> Al Waveform 3c	7000N	850mm	125mm
185mm <sup>2</sup> Al XLPE Triplex 11kV	16300N	700mm	125mm





Electrical As Laid Symbols & Abbreviations		
Symbol	Name & Abbreviation	Colour Variations
	Mains Cable	Red - HV
	Existing Mains Cable	Red - HV
	Abandoned Mains Cable	Red - HV
	Mains Breech Joint (MBJ)	Red - HV
	Mains Straight Joint (MSJ)	Red - HV
	Service Joint (SJ)	-
	Electrical Meter	-
	Cable Duct	-
	Datum Line	-
	Point of Connection (POC)	Red - HV Magenta - DNO/IDNO (Drawing dependent)
	Pot End (PE)	Red - HV
	Service Pot End (SPE)	-
	2 Way Link Box (LB)	Magenta - DNO/IDNO (Drawing dependent)
	4 Way Link Box (LB)	Magenta - DNO/IDNO (Drawing dependent)
	Feeder Pillar (FP)	-
	Streetlight (S/L/C)	-
	Building Entry (BE)	-
	Line of Sight	-

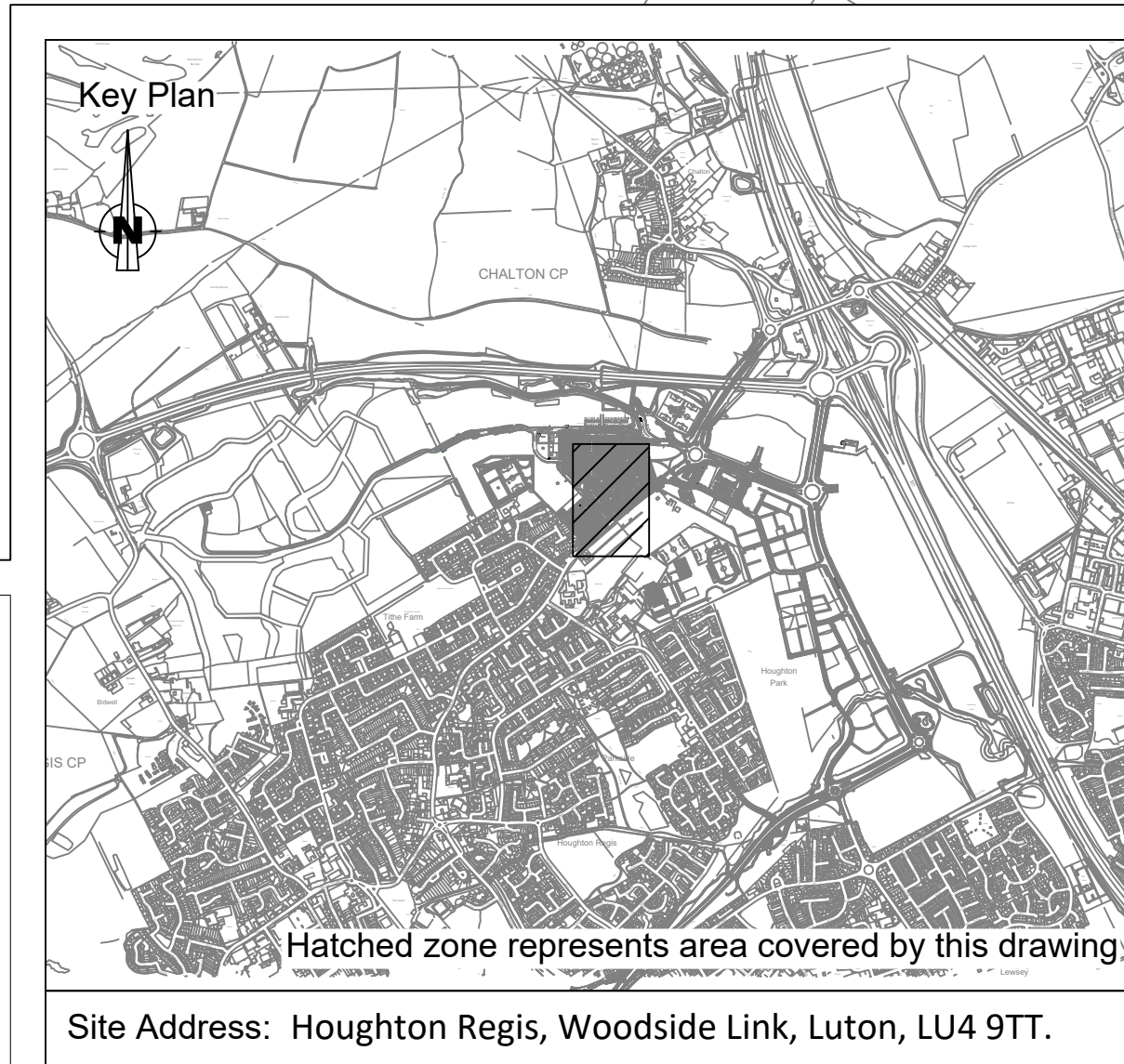
- General Notes:**
- UKPN Ref:
    - HV POC 1: 8200027169/QID 3200019811
    - HV POC 2: 8600010522/QID 3600003054
  - ESPE Ref:
    - POC1: ESPE021747-1
    - POC 2: ESPE021747-2
  - Substation Type: Freestanding/Brick Built
  - For Project Scope and Material Specifications, please refer to UKP6896 - Project Information Document IDNO.
- Please see DWG300 - Sheet 7/7 for:**
- Trench Cross Sections
  - Cable Data

0	First Issue	29/10/20	CEO
	<ul style="list-style-type: none"> <li>Mains cable route updated</li> <li>Cable sizes added to drawing</li> <li>Mains joint positions clarified and dimensioned</li> </ul>		

**UKPS**  
**UK POWER SOLUTIONS**  
 The Utility Connection Company  
 River View House, Bonds Mill Estate, Bristol Road  
 Stonehouse, Gloucestershire GL10 3RF  
 4th Floor, West World, West Gate  
 Ealing, London W5 1DT  
 www.ukpowersolutions.co.uk

Client	HRMC Ltd.		
Project	Linnere		
Title	As Laid Plan - IDNO		
Design & Planning Engineer	Pelin Morgan	Contact No.	08452 577 105
Project Manager	Brad Hogan	Contact No.	07814 516 036
Drawn By	CEO	Checked By	---
Scale	As Shown	Sheet No.	5/7
Original Size	A1		
Drawing No.	UKP6896 - DWG903		Rev
Client Ref.	-		
Drawing Status	For Information - As Installed/Built		

Cable Installation Data			
Cable Type	Max Pulling Tension	Minimum Bending Radius (On Route)	Minimum Duct Size (ID)
25mm <sup>2</sup> /35mm <sup>2</sup> Al Split Concentric 1Ph	Manual	125mm	38mm
35mm <sup>2</sup> Al Split Concentric 3Ph	Manual	210mm	50mm
95mm <sup>2</sup> Al Waveform 3c	3000N	550mm	125mm
185mm <sup>2</sup> Al Waveform 3c	7000N	700mm	125mm
300mm <sup>2</sup> Al Waveform 3c	7000N	850mm	125mm
185mm <sup>2</sup> Al XLPE Triplex 11kV	16300N	700mm	125mm



Site Layout & Cable Routes - Continuous

Site Address: Houghton Regis, Woodside Link, Luton, LU4 9TT.