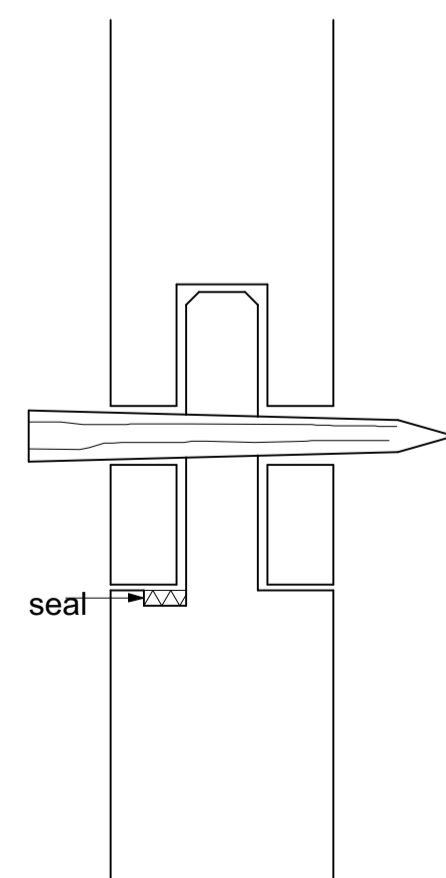
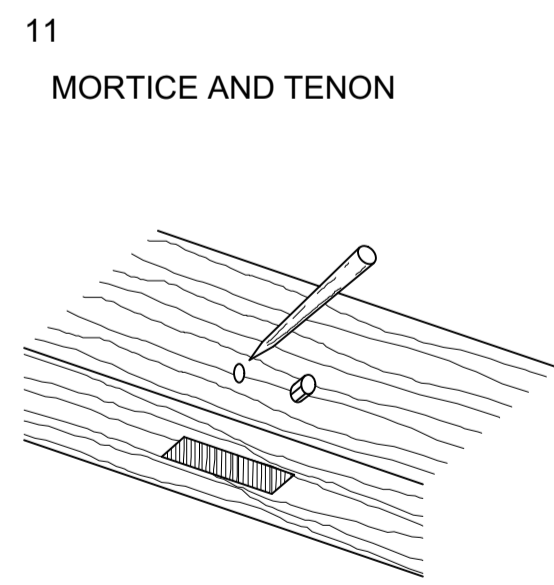
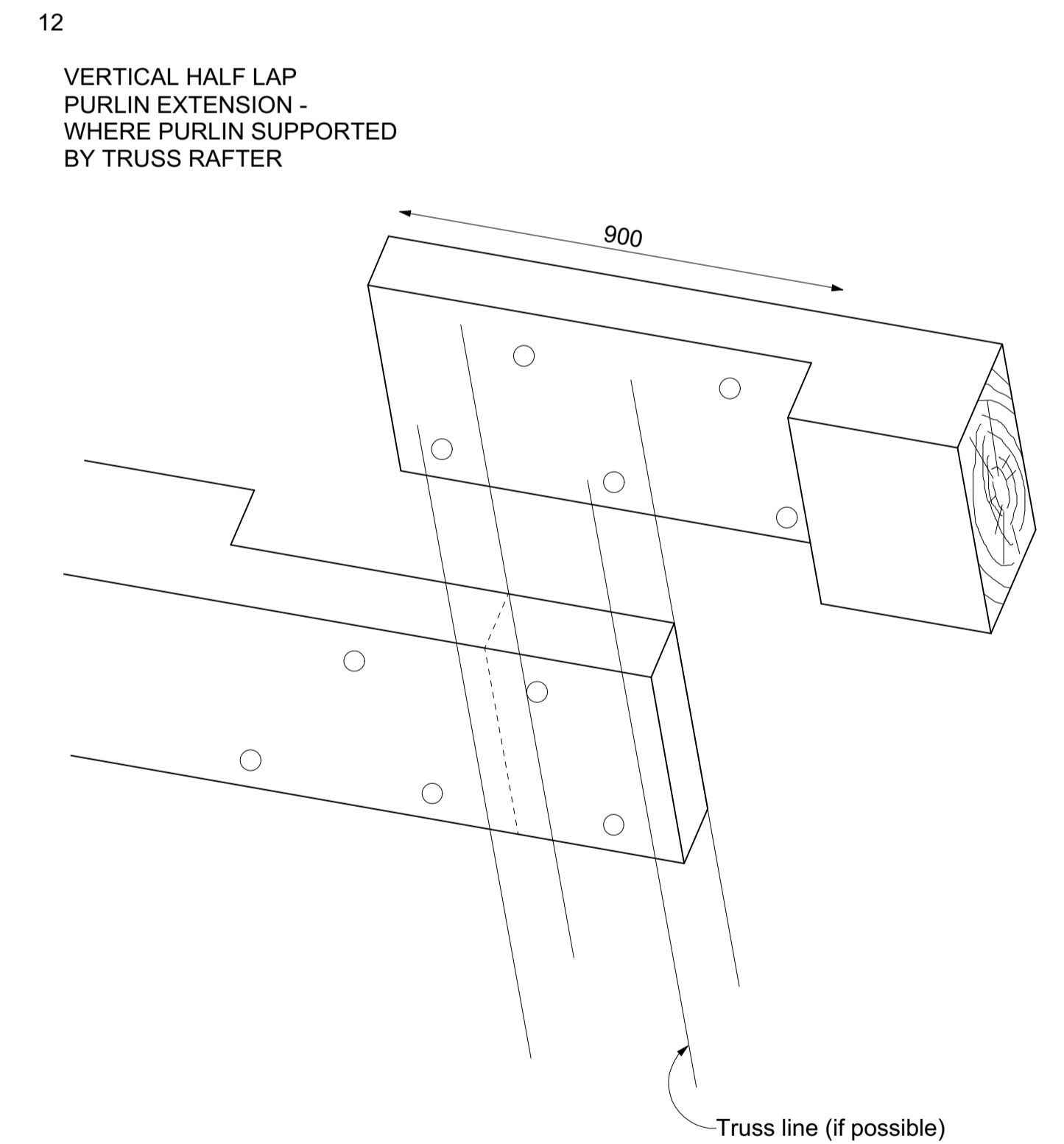
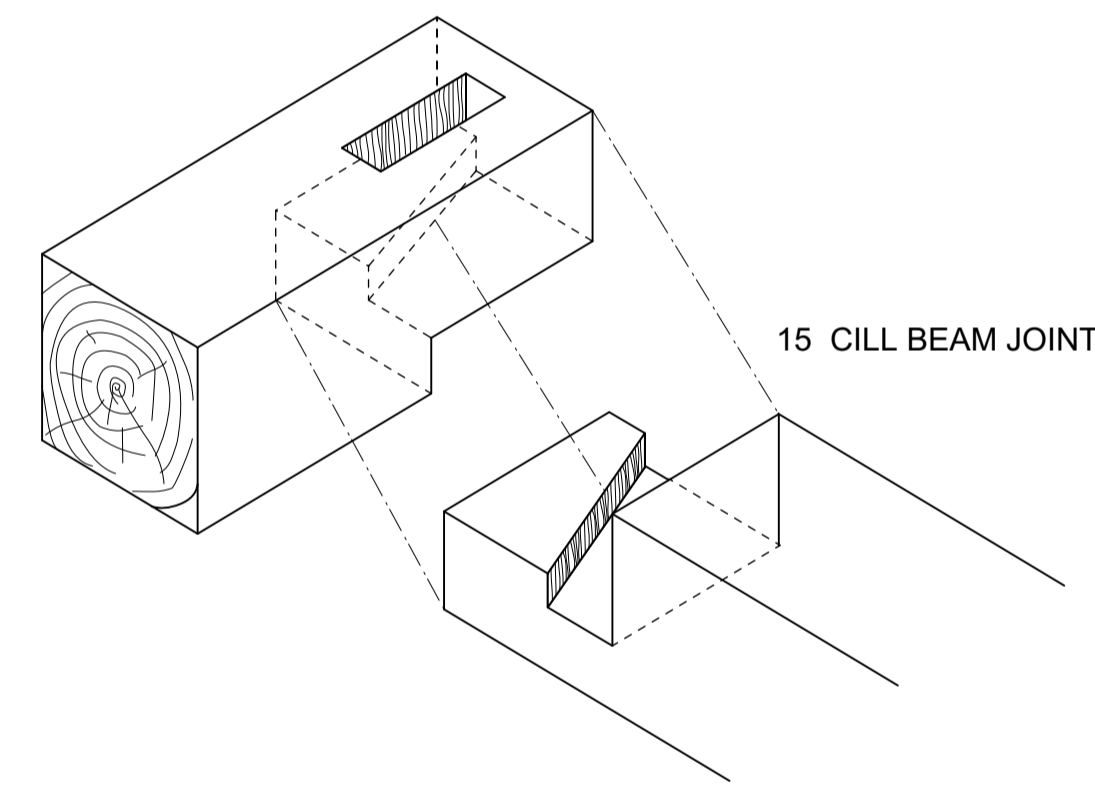
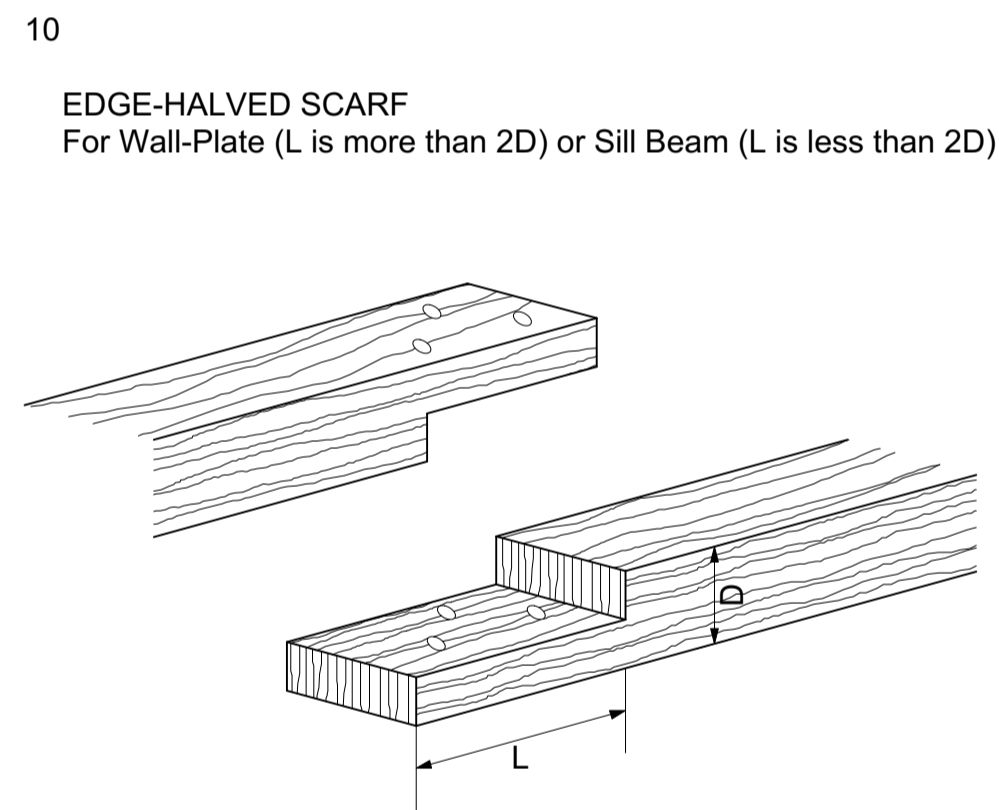
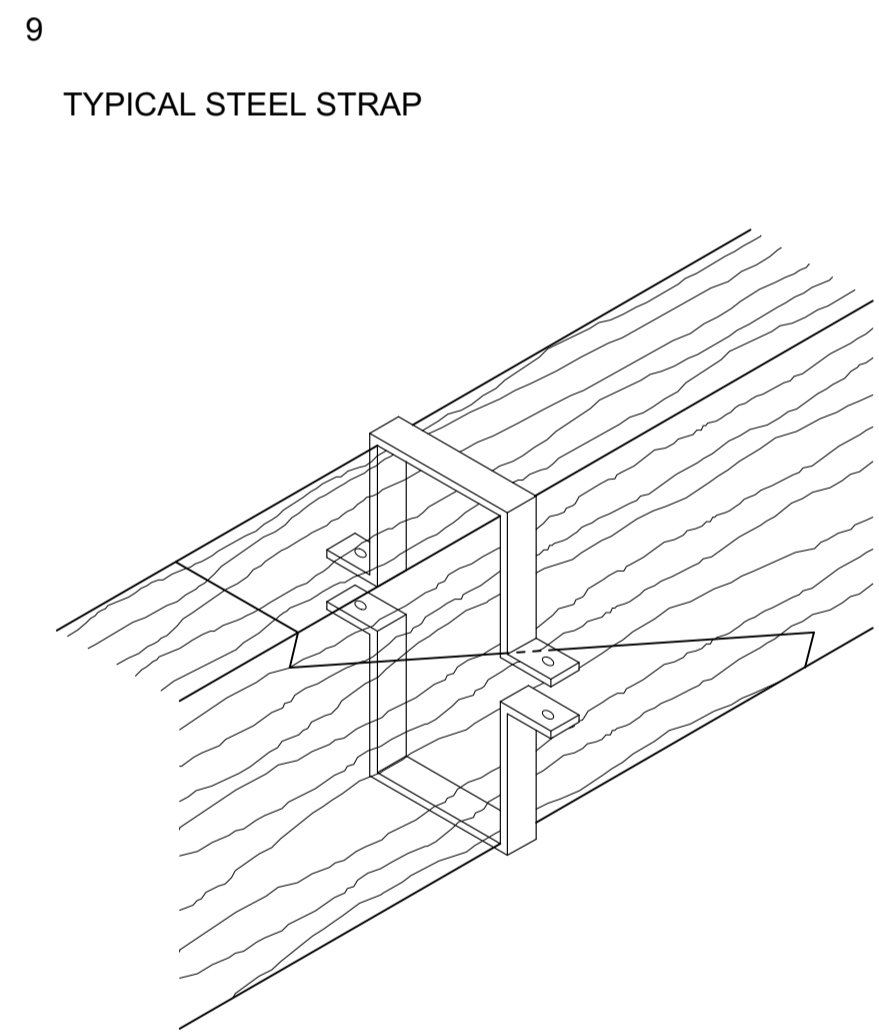
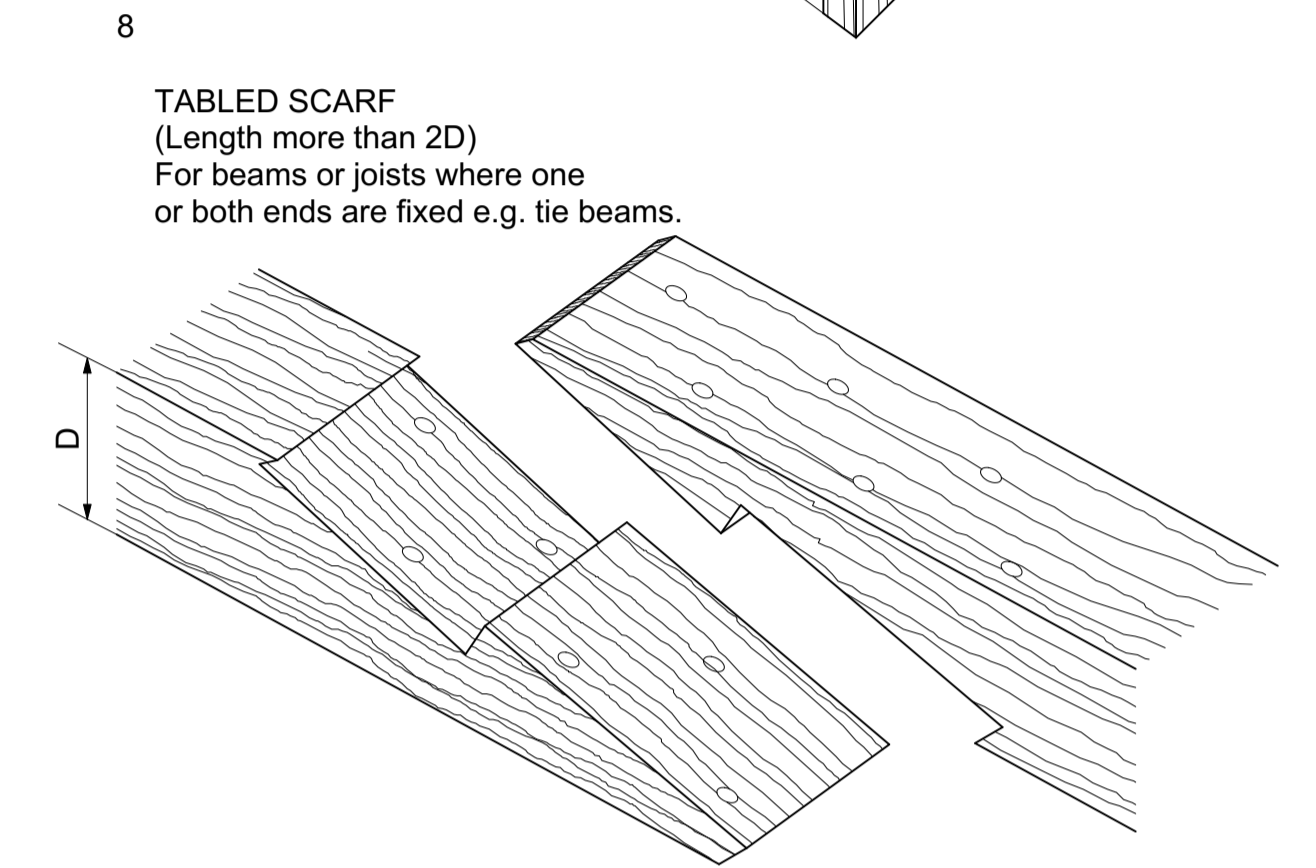
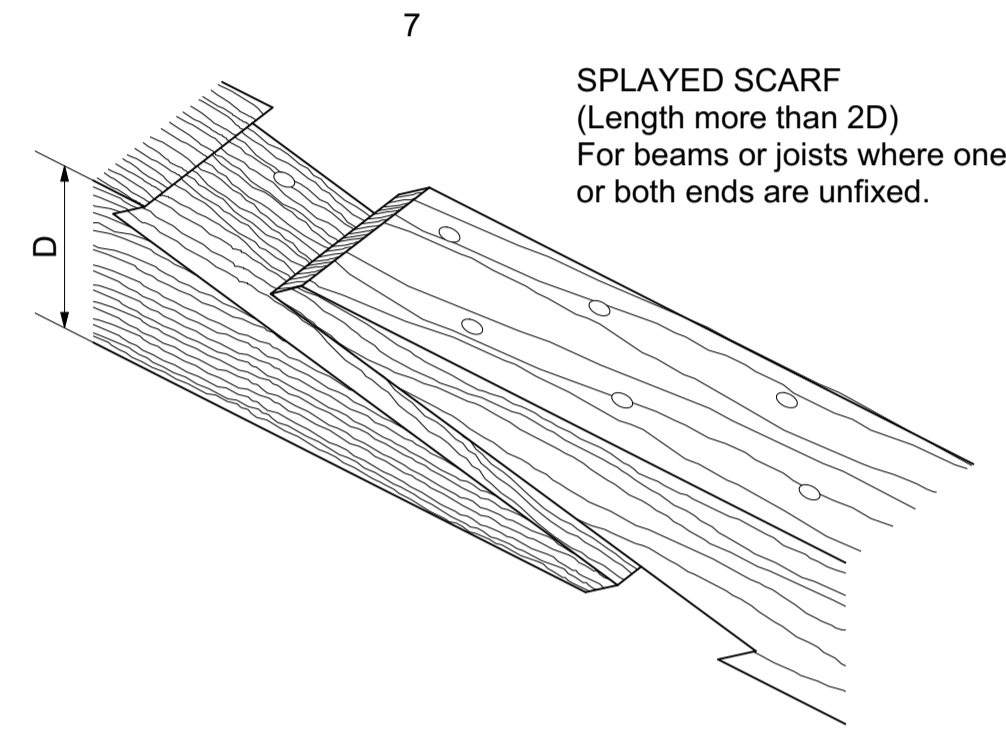
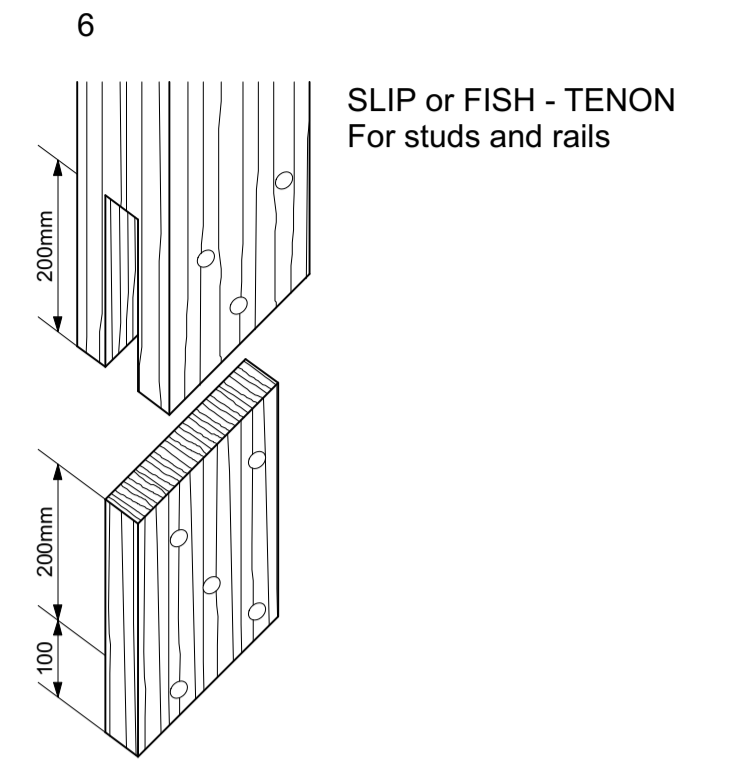


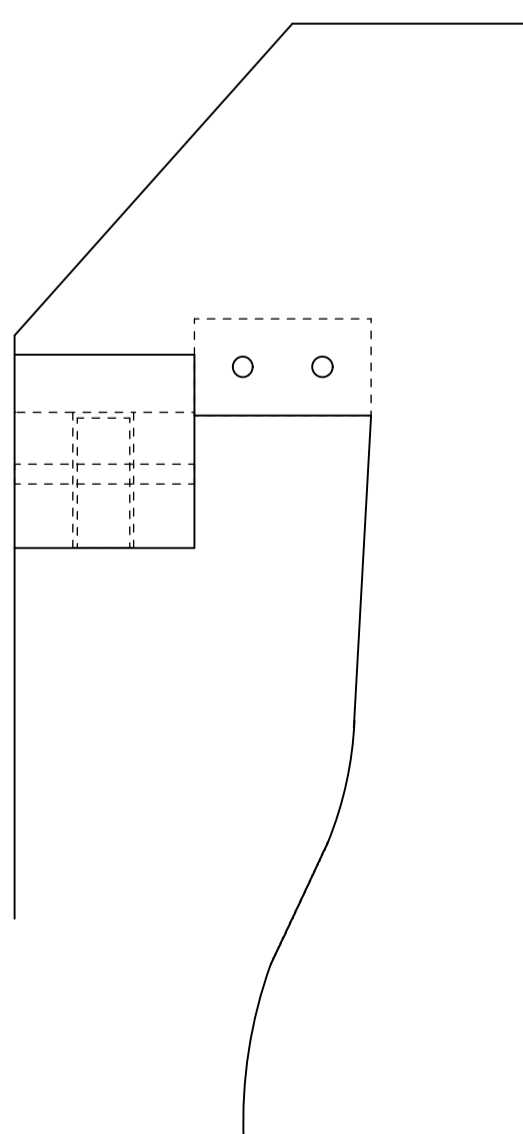
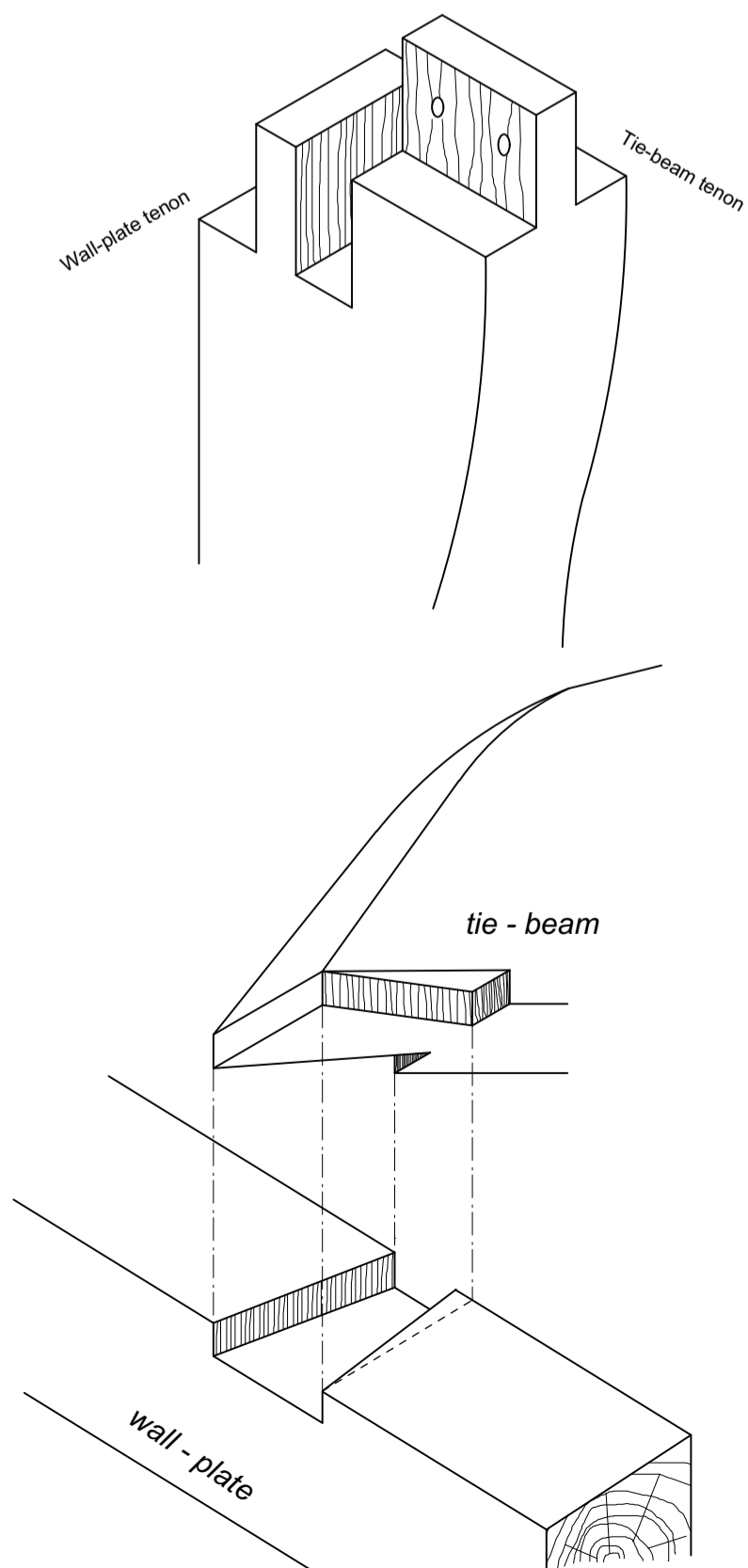
©This drawing and the building works depicted in it are the copyright of the architect and may not be reproduced except by written permission  
DO NOT SCALE OFF THIS DRAWING



Peg - hexagonal tapered oak pegs driven in from upper (heart) face. Ends left long until completion of job, then after final tapping in, cut to leave 1 and a half inch projection.

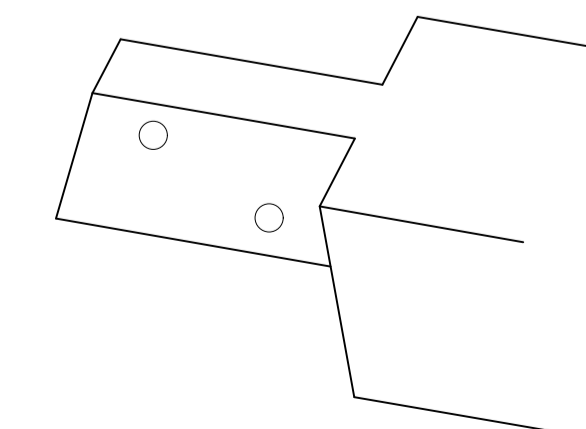
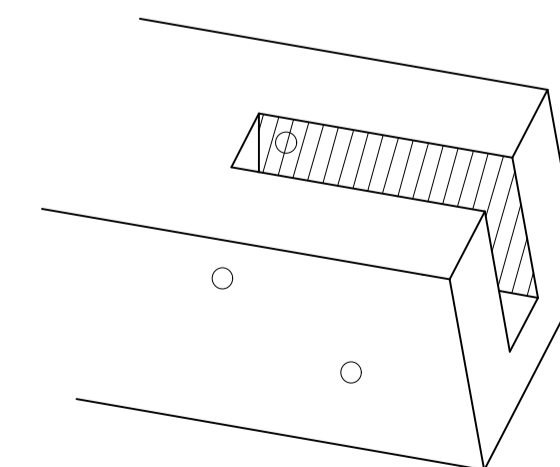
Joints - generally draw-bored, may require tenon holes to be slightly chamfered to ease driving in of pegs, leading edge of tenon may also need to be chamfered.

Seal - Shoulder to be rebated for seal as shown - seal to be 'Compriband V' size 10mm wide and 5mm thick (pre-compressed from 25mm)



15 POST HEAD / TIE - BEAM WALL - PLATE JOINT

13 BRIDLE SCARF JOINT



**nick joyce architects ltd**  
architects and historic building consultants  
Company No. 9524906 Registered in England and Wales

5 BARBOURNE ROAD WORCESTER WR1 1RS  
TELEPHONE 01905 726307/29911 FAX 01905 726307

NETHERCOTT COTTAGE, CLEOBURY MORTIMER.

oak repair joints.

SCALE - 1:20 @ A1	DRAWN - AAS	DRG No - 2565-06
DATE - October 2023	CHECKED -	