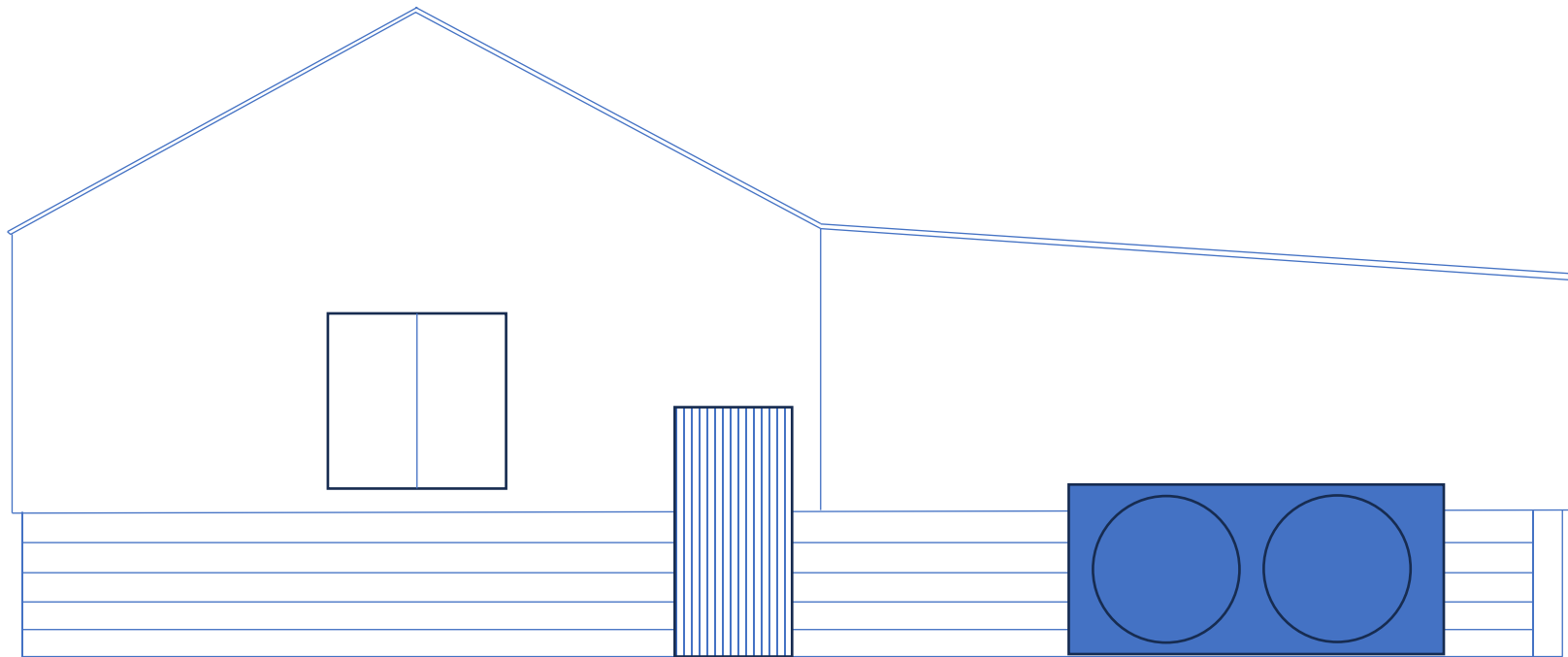


Old Grain Barn non-material change application to planning DC/21/02612

Revised drawing reference number: 02/02/2024 - 01

Front Elevation

- Remove turret from roof
 - Remove store from front
 - Air source heat pump fans are present
 - Cannot include large window on elevation due to air-source fans
 - Add a window approx. 1m x 1.4m on left
-
- All facing to be black clad 'composite' timber, above black painted breeze block as currently present



Side Elevation South

- Move single door away from front side to approx. 2.5m
 - (Interior plant room for air-source heat pump means it cannot be installed closer to the front)
- Move large double window closer to rear elevation. Approx 2.5m
 - (evens out windows / doors across this face)
- Turret has been removed from roof
- Roof windows have been removed

- All facing to be black clad 'composite' timber, above black painted breeze block as currently present

