

This drawing is COPYRIGHT. It must not be reproduced or disclosed to third parties without our prior permission. Do not scale from this drawing, or, interrogate and use electronic information.

Any discrepancies should be reported immediately.

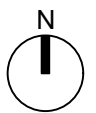
Any surveyed information incorporated within this drawing cannot be guaranteed as accurate unless confirmed by a fixed dimension. All dimensions are in millimetres unless noted otherwise.



- Existing Static Caravans
- Existing Holiday Unit
- Existing Pad Construction but no Static Caravan
- Proposed Caravan/Holiday Unit Location - yet to be built

This area has planning approval 20/1719/FUL for 'Change of use of agricultural land to holiday park amenities.' Dated 04.06.2021

The area not covered by approval 20/1719/FUL has planning approval 20/11716/FUL for 'Proposed holiday park development comprising of 15 no. holiday cabins, 20 no. holiday units, shared service & amenity building, formation of vehicular access & roadways, installation of treatment plant & assorted works.' Dated 04.06.2021



Head Office
29 Broad Street
Newtown
Powys
SY16 2BQ
t - 01686 610311
w - www.hughesarchitects.co.uk

Project Planning Regularisation at land at Aelybryn (now Cwm Hafren Holiday Park), Aberhaseph, SY16 3HR			
Drawing Status Stage 3a: Planning		Drawing Title Amenity Space Site Plan	
Scale : 1:250 @ A3	Date 12.12.23	Drawing No Y064.3a.3.204	Rev
Drawn by WRF Checked DH			