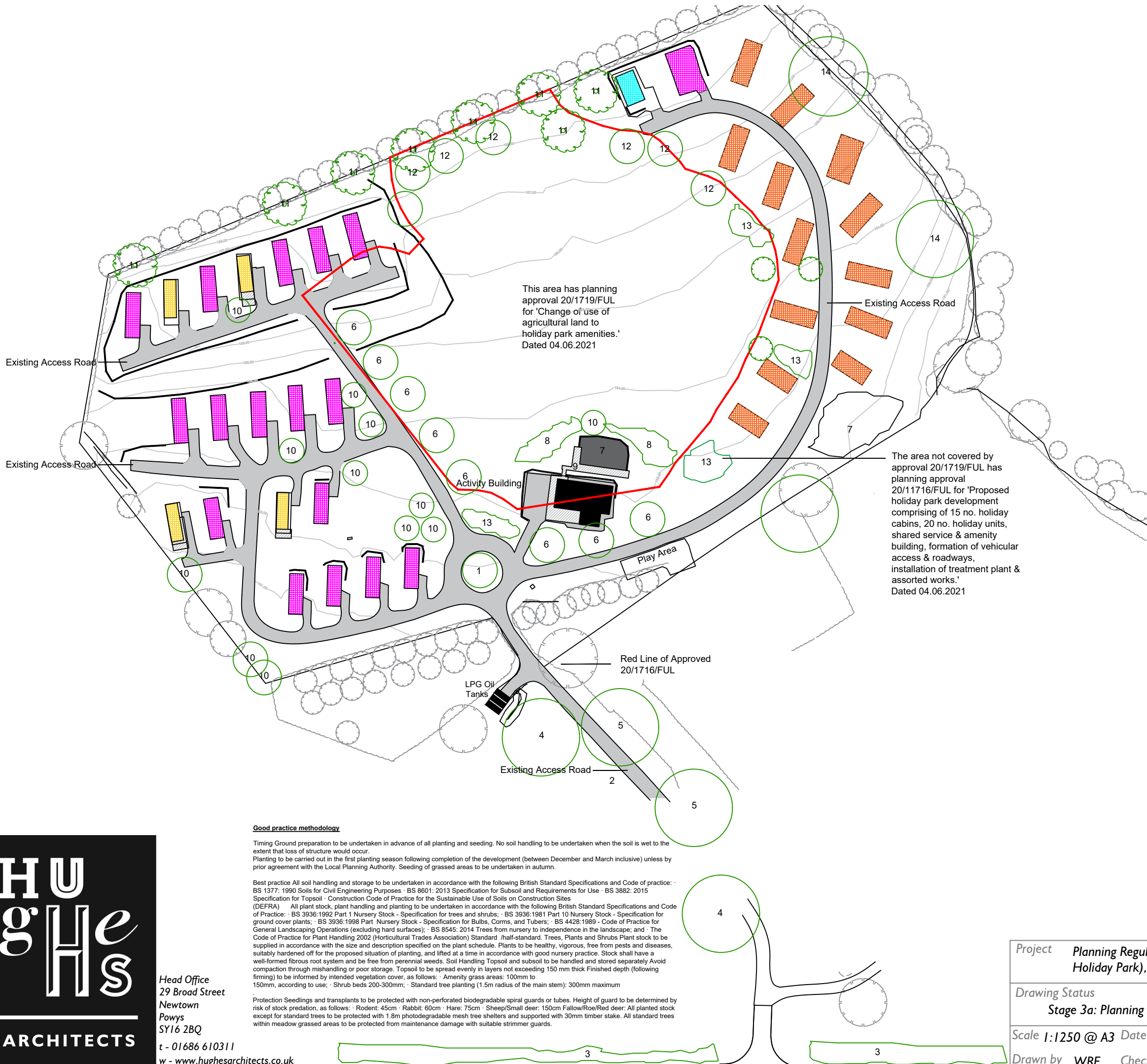


This drawing is COPYRIGHT. It must not be reproduced or disclosed to third parties without our prior permission. Do not scale from this drawing, or, interrogate and use electronic information.

Any discrepancies should be reported immediately.

Any surveyed information incorporated within this drawing cannot be guaranteed as accurate unless confirmed by a fixed dimension. All dimensions are in millimetres unless noted otherwise.



Planting Schedule

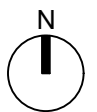
- 1 1 no Aesculus hippocastanum Specimen tree 'standard'
- 2 New planted mixed hedgerow planted as double-row whips at 300ctrs 6 per LM 60-80% crateagus monogyna Remainder-Prunus spinose, Coryllus avellana, Acer campestre, Iles aquifolium, Sambusucus nigra, Viburnum opulus
- 3 Relocated existing hedgerow supplemented as req'd See Ecology Report re.methodology (Located S of drawing, at either side of junction access to highway).
- 4 2 no hedgerow trees Acer Campestre half-standard
- 5 2 no oaks for autumn colour Quercus Rubra, Quercus Coccinea size 'standard'.
- 6 8 no 'Avenue' trees Prunus Avium 'plena' Size 'standard'.
- 7 Form 'wildlife' ponds to approx. areas indicated. Use puddled clay or 'eco seal EPDM' or similar. Exploit prevailing ground levels to achieve pond with depths of 750mm to shallows to accommodate different plant preferences for mammals, invertebrates, insects and birds. Incorporate stone and fine gravel shallows for access and egress. The freshwater should be moving at all times utilising the SUDS drainage principles contained within the SAB proposals.
- 8 Plant 'marginal' plants and shrubs on intermediate and ground level to selected according to ground conditions. Suggested plants as follows: Calthus palustris, Butomus umbellatus, Myosotis Corpiodes, Ranunculus Hammula, Pontederia Cordata, Iris psedocorus, Mentha aquatic, Cyperus longus. Additional supplementary planting Ligularia, Astilbe Hosta, Filipendula etc.
- 9 Provide treated timber edging to allow ease of maintenance. Top dress remaining exposed topsoil with site mulch created from site maintenance.
- 10 6 no decorative smaller trees
3 no Betula pubescens size 'standard'
3 no grouped as grove Sorbus Aucuparia semi-standards
- 11 2 no 'edge of woodland'-transitional' Prunus Padus 'standard'
- 12 'Grove' 6no mixed evergreens Pinus sylvestris, Larix decidua, seudotsuga menzlieii 'half-standards'.
- 13 Provide additional 'ribbons' of planting are in natural forms and plant with seasonal appreciation as follows: English names for convenience.
Spring -Currant, Barberry Forsythia, Guelder Rose
Summer -Hebe, lavender, honeysuckle, elder
Autumn -Buddleia, Heather, StJohns wort, Japanese Aralia
Winter - Oregon grape, ivy, witchhazel, sweet box
Secondary planting for form and texture - hawthorn, holly, firethorn, cotoneaster

Note - Remaining meadow over-seeded/drilled with approved wildflower mix and maintained by relaxation of grass cutting regime.

Mix EM3 Special General Purpose Rate-5g per M2

- 14 2 no Quercus Petraea. 'semi-standard' ensure planted in glade with canopy access.
- 15 3 no decorative small trees Malus sylvestris Malus floribunda 'standard'

For illustrative purposes ONLY.



Good practice methodology

Timing Ground preparation to be undertaken in advance of all planting and seeding. No soil handling to be undertaken when the soil is wet to the extent that loss of structure would occur.
Planting to be carried out in the first planting season following completion of the development (between December and March inclusive) unless by prior agreement with the Local Planning Authority. Seeding of grassed areas to be undertaken in autumn.

Best practice All soil handling and storage to be undertaken in accordance with the following British Standard Specifications and Code of practice: - BS 1377: 1990 Soils for Civil Engineering Purposes - BS 8601: 2013 Specification for Subsoil and Requirements for Use - BS 3882: 2015 Specification for Topsoil - Construction Code of Practice for the Sustainable Use of Soils on Construction Sites (DEFRA) All plant stock, plant handling and planting to be undertaken in accordance with the following British Standard Specifications and Code of Practice: - BS 3936:1992 Part 1 Nursery Stock - Specification for trees and shrubs; - BS 3936:1981 Part 10 Nursery Stock - Specification for ground cover plants; - BS 3936:1998 Part Nursery Stock - Specification for Bulbs, Corms, and Tubers; - BS 4428:1989 - Code of Practice for General Landscaping Operations (excluding hard surfaces); - BS 8545: 2014 Trees from nursery to independence in the landscape; and - The Code of Practice for Plant Handling 2002 (Horticultural Trades Association) Standard /half-standard. Trees, Plants and Shrubs Plant stock to be supplied in accordance with the size and description specified on the plant schedule. Plants to be healthy, vigorous, free from pests and diseases, suitably hardened off for the proposed situation of planting, and lifted at a time in accordance with good nursery practice. Stock shall have a well-formed fibrous root system and be free from perennial weeds. Soil Handling Topsoil and subsoil to be handled and stored separately Avoid compaction through mishandling or poor storage. Topsoil to be spread evenly in layers not exceeding 150 mm thick Finished depth (following firming) to be informed by intended vegetation cover, as follows: - Amenity grass areas: 100mm to 150mm, according to use; - Shrub beds 200-300mm; - Standard tree planting (1.5m radius of the main stem): 300mm maximum

Protection Seedlings and transplants to be protected with non-perforated biodegradable spiral guards or tubes. Height of guard to be determined by risk of stock predation, as follows: - Rodent: 45cm - Rabbit: 60cm - Hare: 75cm - Sheep/Small deer: 150cm Fallow/Roe/Red deer. All planted stock except for standard trees to be protected with 1.8m photodegradable mesh tree shelters and supported with 30mm timber stake. All standard trees within meadow grassed areas to be protected from maintenance damage with suitable strimmer guards.

HUGHES ARCHITECTS

Head Office
29 Broad Street
Newtown
Powys
SY16 2BQ

t - 01686 610311

w - www.hughesarchitects.co.uk

Project		Planning Regularisation at land at Aelybryn (now Cwm Hafren Holiday Park), Aberhaseph, SY16 3HR	
Drawing Status		Drawing Title	
Stage 3a: Planning		Proposed Landscaping Plan	
Scale 1:1250 @ A3	Date 12.12.23	Drawing No	Rev
Drawn by WRF	Checked DH	Y064.3a.3.205	