



WINDOWS HIGHLIGHTED WITH (✱)  
TO BE REPLACED.

EXISTING WINDOWS ARE TIMBER  
SLIDING SASH & CASE.  
FRAME COLOUR: WHITE.

PROPOSED WINDOWS TO BE  
DOUBLE GLAZED TIMBER SLIDING  
SASH & CASE TO MATCH EXISTING.  
DOUBLE GLAZED THICKNESS TO BE MAX. 12mm.  
INTERNAL SPACER BARS TO BE WHITE.  
FRAME COLOUR: RAL 9016.  
REFER TO NOTES ON PR25 - WINDOW DETAILS

EXISTING DRAINAGE  
CONNECTION REMOVED

EXTERNAL STONE STAIR  
WITH METAL BALUSTRADE  
TO BE REMOVED

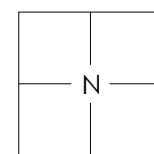
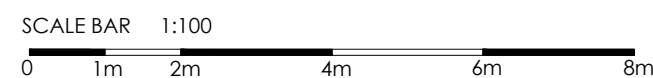
NEW SVP TO SERVE NEW ENSUITE.  
SVP TO BE BLACK CAST IRON TO  
MATCH EXISTING.

These drawings are to be read in conjunction with engineer's documents. Do not scale drawings. Use figured dimensions only. Contact designer where discrepancies arise. Contractor must verify measurements on site prior to construction or preparation of shop drawings.

revision status

No. 01 Description ISSUED FOR PLANNING

Date 14.01.24



PROPOSED ELEVATIONS 2

stage PLANNING

revision 01  
scale 1:100

PR21

74 PARTICKHILL ROAD  
GLASGOW  
G11 5NB

MORAG HENDRY



2 TUDOR ROAD, GLASGOW  
TEL: 07815 007 861  
r@rankinarchitects.co.uk