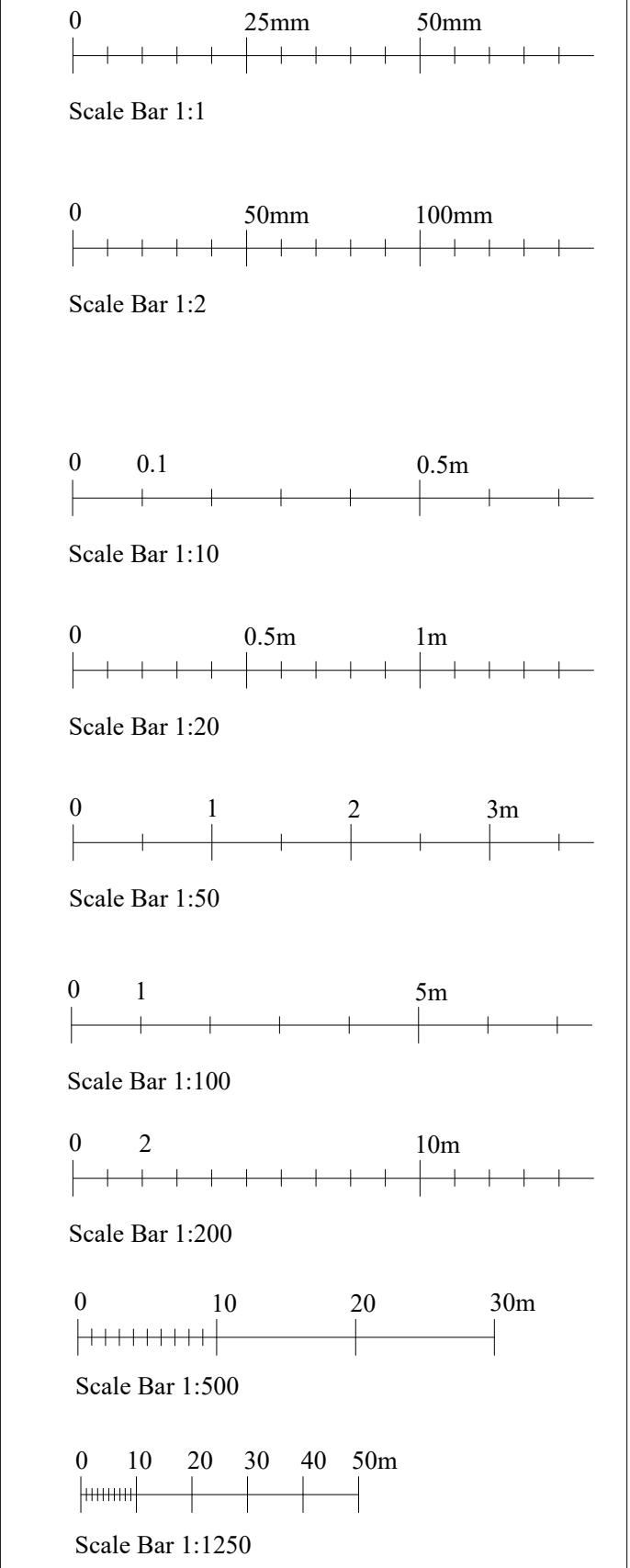
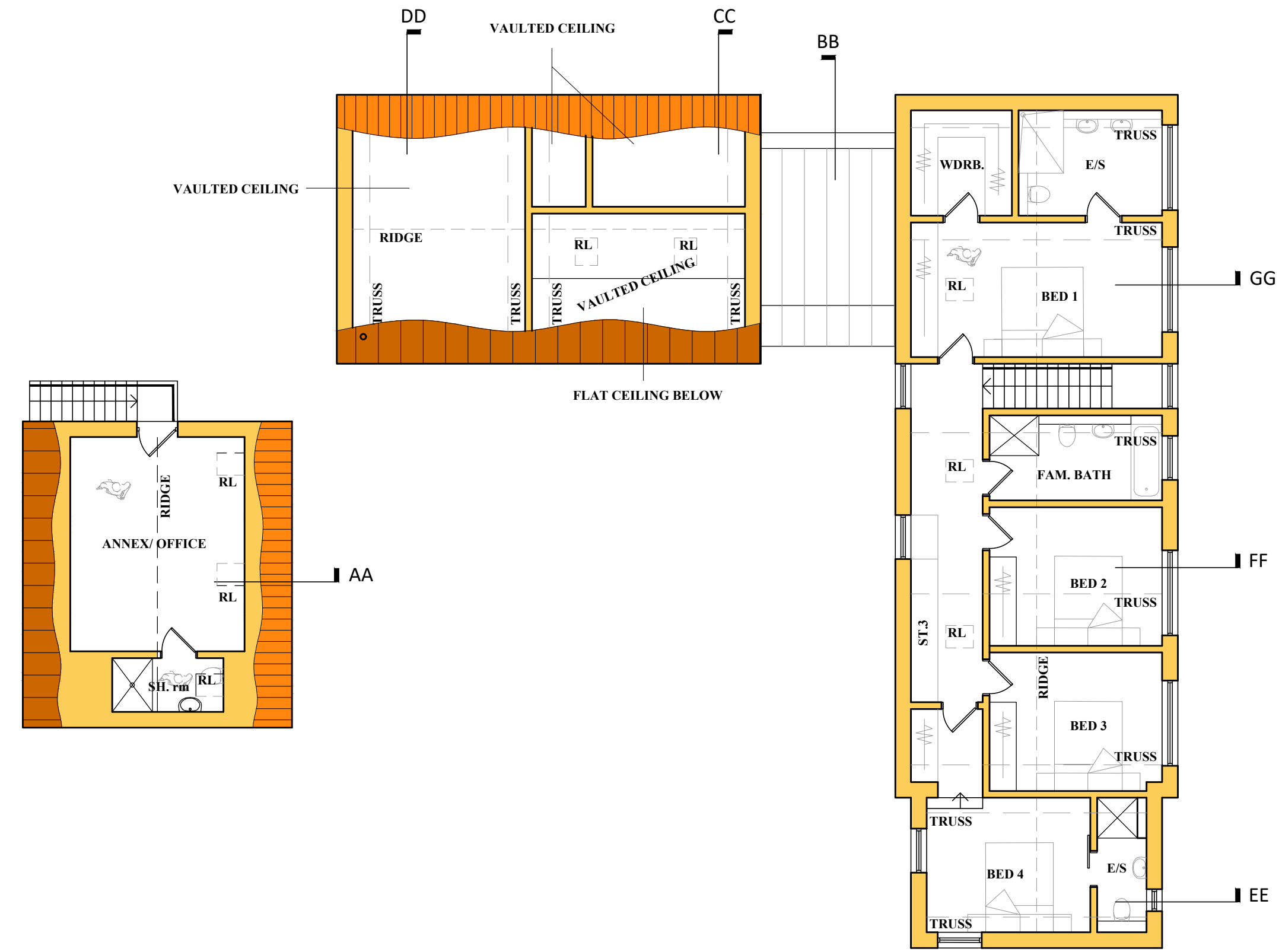


This drawing is for Planning purposes only.
All dimensions to be checked on site.

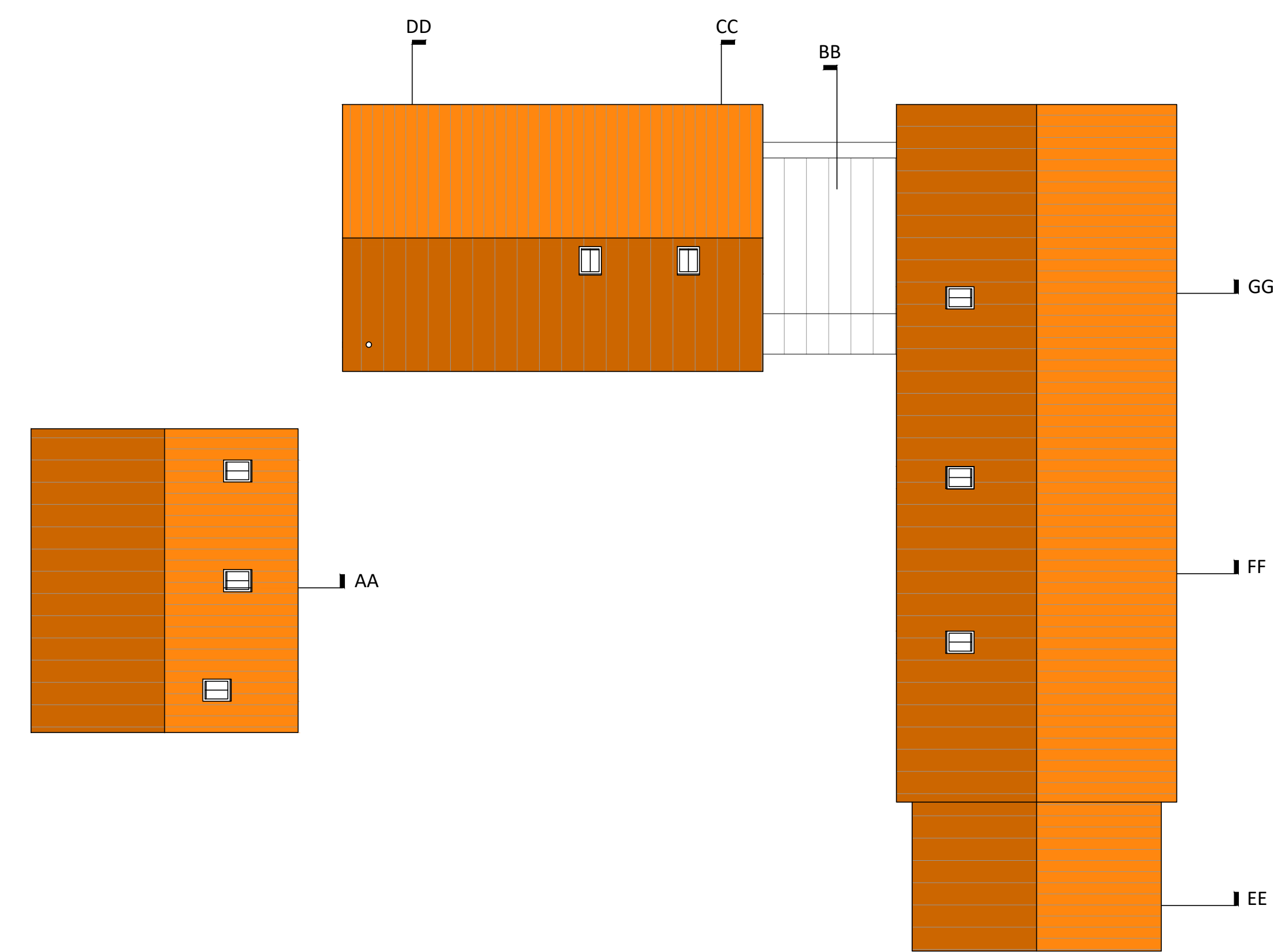
Notes



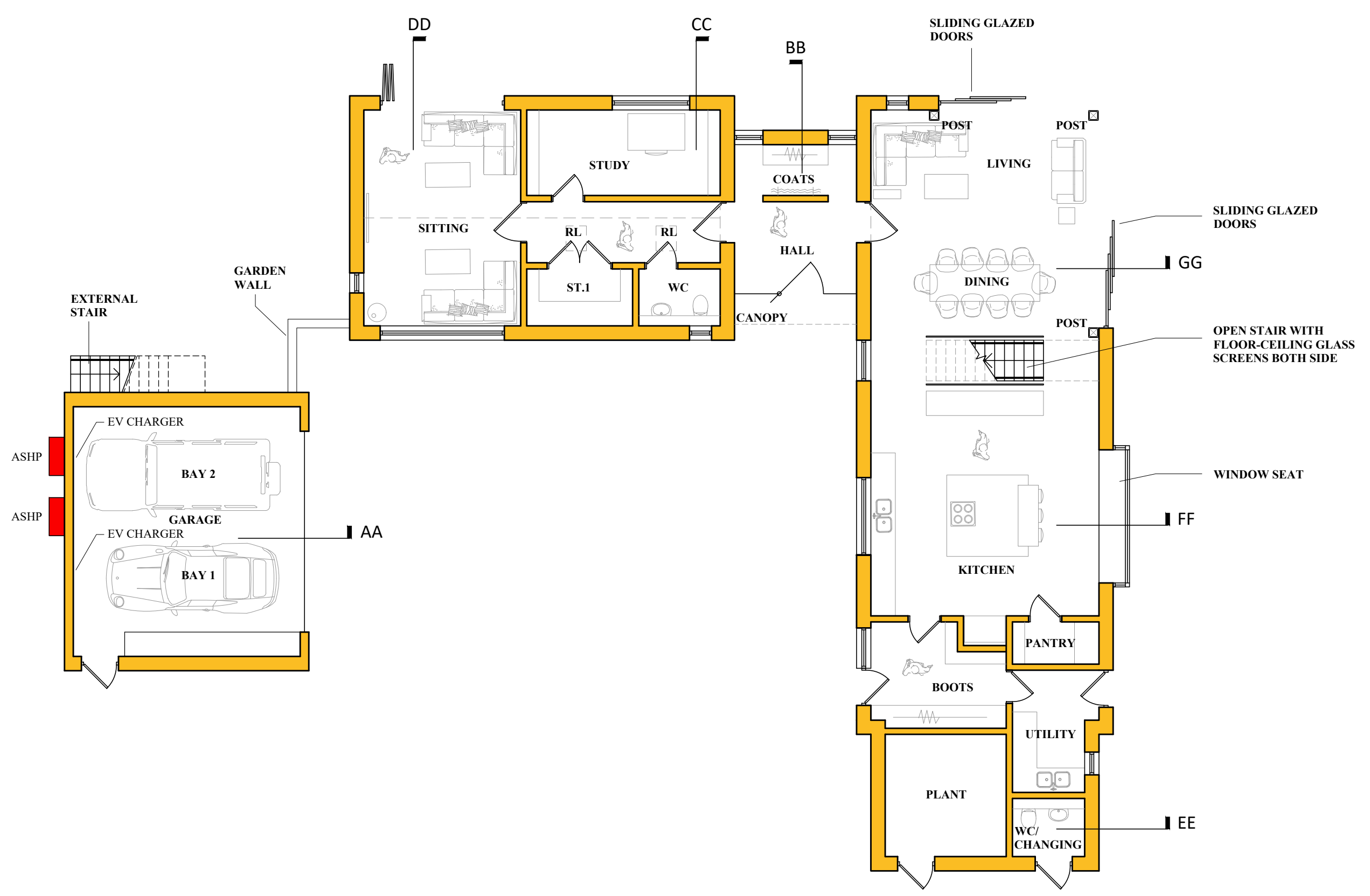
AREAS - GROSS INTERNAL AREA (GIA)		
HOUSE		GARAGE/ ANNEX
GF PLAN; 160m ²		GF PLAN; 34m ²
FF PLAN; 100.2m ²		FF PLAN; 21.9m ²
TOTAL; 260.2m²		TOTAL; 55.9m²



FIRST FLOOR PLAN - PROPOSED
1/100 @ A1



ROOF PLAN - PROPOSED
1/100 @ A1



GROUND FLOOR PLAN - PROPOSED
1/100 @ A1

The above line measures 200mm in length when printed correctly

IAN ABRAMS
ARCHITECT LIMITED

5 The Maltings, Station Road, Newport, Essex CB11 3RN
Telephone: 01799 543 533
Fax: 01799 543 653
e-mail: ian@abrams.uk.com
www.ian-abrams-architects.co.uk

Job title
RESIDENTIAL DEVELOPMENT
at
**FOX & HOUNDS, BROMLEY,
STANDON, WARE, SG11 1NX**

Drawing title
**FLOOR PLANS
PROPOSED**

Scale	Date	Drawn
AS SHOWN @A1	31.08.23	THS
Drawing No	Rev	
128423.04	-	

J:\2023\101 Fox & Hounds Planning\Floor Plans\128423.04 - Planning\128423.04.dwg