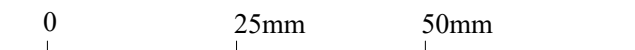
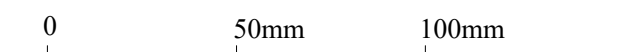


This drawing is for Planning purposes only.  
All dimensions to be checked on site.

Notes



Scale Bar 1:1



Scale Bar 1:2



Scale Bar 1:10



Scale Bar 1:20



Scale Bar 1:50



Scale Bar 1:100



Scale Bar 1:200



Scale Bar 1:500



Scale Bar 1:1250



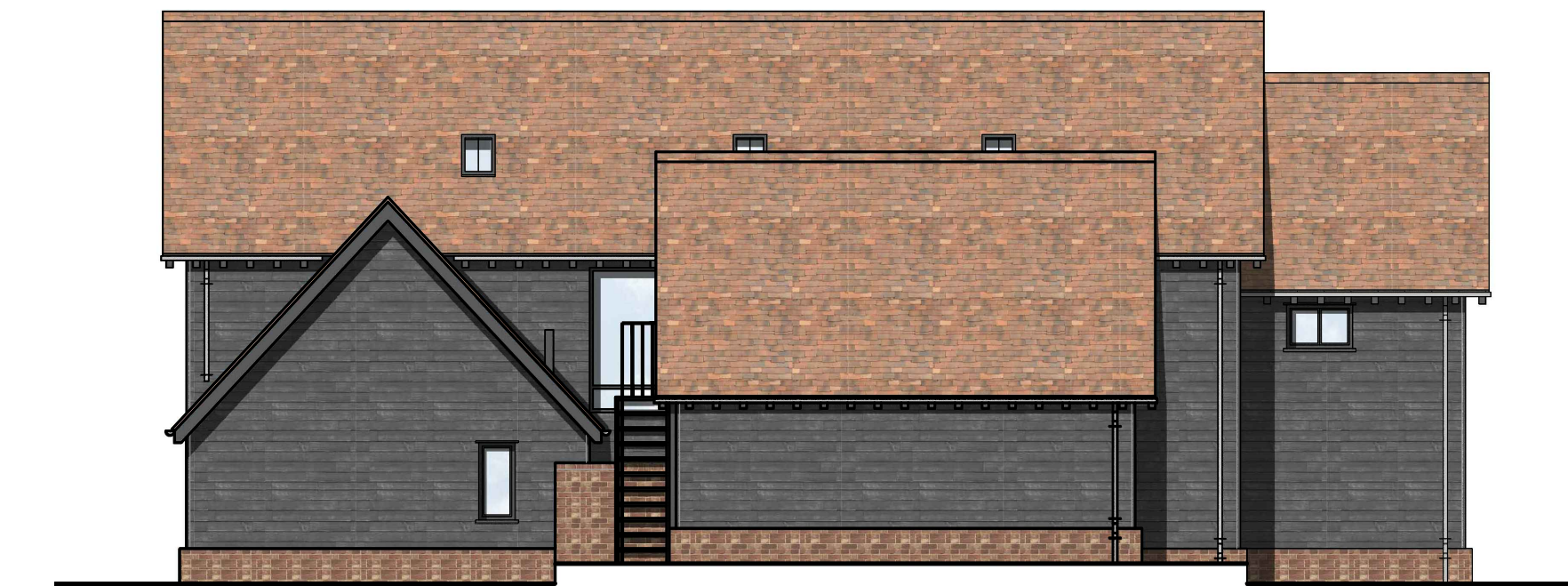
**ELEVATION A (SOUTH EAST) - PROPOSED**  
1/100 @ A1



**ELEVATION B (NORTH EAST) - PROPOSED**  
1/100 @ A1



**ELEVATION C (NORTH WEST) - PROPOSED**  
1/100 @ A1



**ELEVATION D (SOUTH WEST) - PROPOSED**  
1/100 @ A1

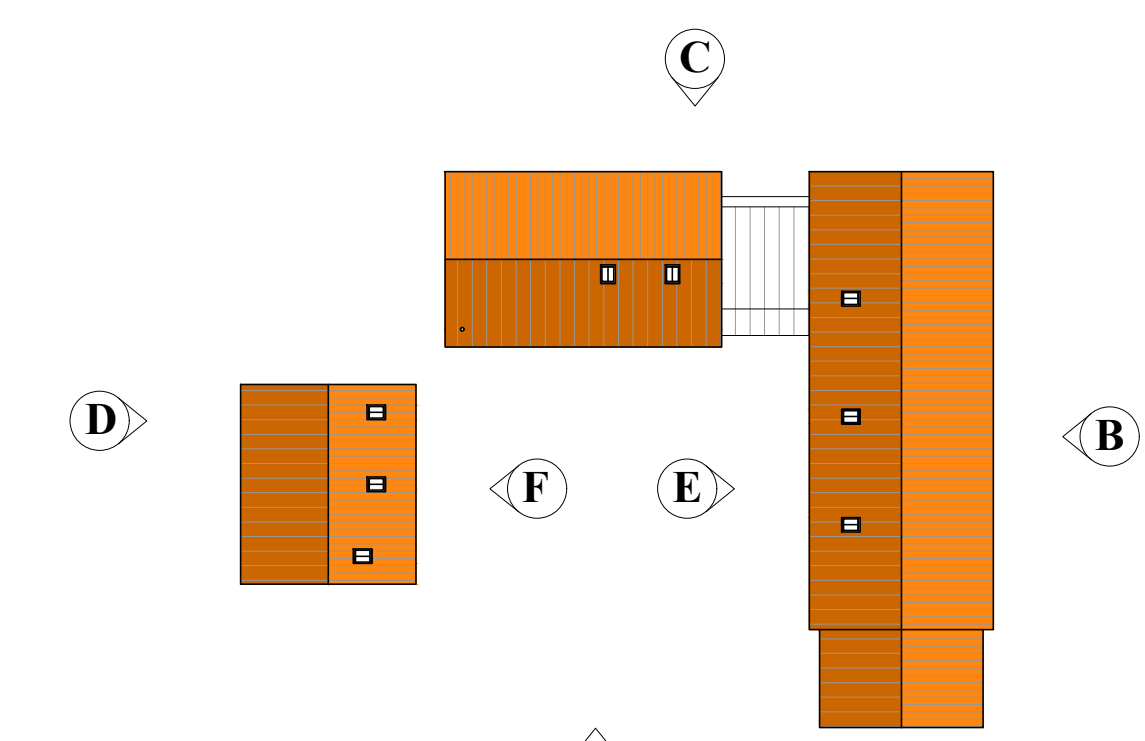


**ELEVATION E (SOUTH WEST) - PROPOSED**  
1/100 @ A1



**ELEVATION F (NORTH EAST) - PROPOSED**  
1/100 @ A1

EXTERNAL MATERIALS	
<b>HOUSE</b>	<b>GARAGE/ ANNEX</b>
CLAY PLAIN TILE ROOF	CLAY PLAIN TILE ROOF
ROLLTOP COPPER FLAT ROOF	GALVANISED STEEL RAINWATER GOODS
GALVANISED STEEL RAINWATER GOODS	TIMBER CLAD ABOVE FACING BRICK WALLS
TIMBER CLAD ABOVE FACING BRICK WALLS	ALUMINIUM & TIMBER JOINERY
ALUMINIUM & TIMBER JOINERY	CONSERVATION ROOFLIGHTS
CONSERVATION ROOFLIGHTS	



**ELEVATION KEY**  
NTS @ A1

**IAN ABRAMS**  
ARCHITECT LIMITED

5 The Matings, Station Road, Newport, Essex CB11 3RN  
Telephone: 01799 543 533  
Fax: 01799 543 653  
e-mail: ian@abrams.uk.com  
[www.ian-abrams-architects.co.uk](http://www.ian-abrams-architects.co.uk)

Job title  
RESIDENTIAL DEVELOPMENT  
at  
**FOX & HOUNDS, BROMLEY,  
STANDON, WARE, SG11 1NX**

Drawing title  
**ELEVATIONS  
PROPOSED**

Scale	Date	Drawn
AS SHOWN @A1	31.08.23	THS
Drawing No	Rev	
<b>128423.06</b>	-	