

Crossways, Lower Pennington Lymington

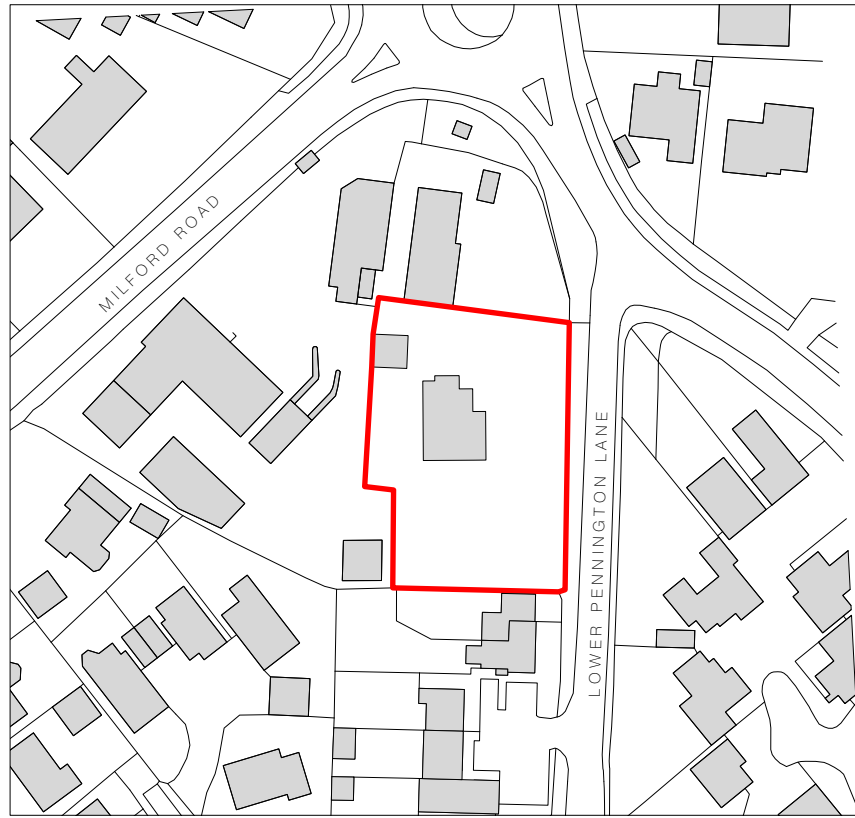
Client: Harnden Homes
January 2024

www.davidjamesarchitects.co.uk

Planning Application

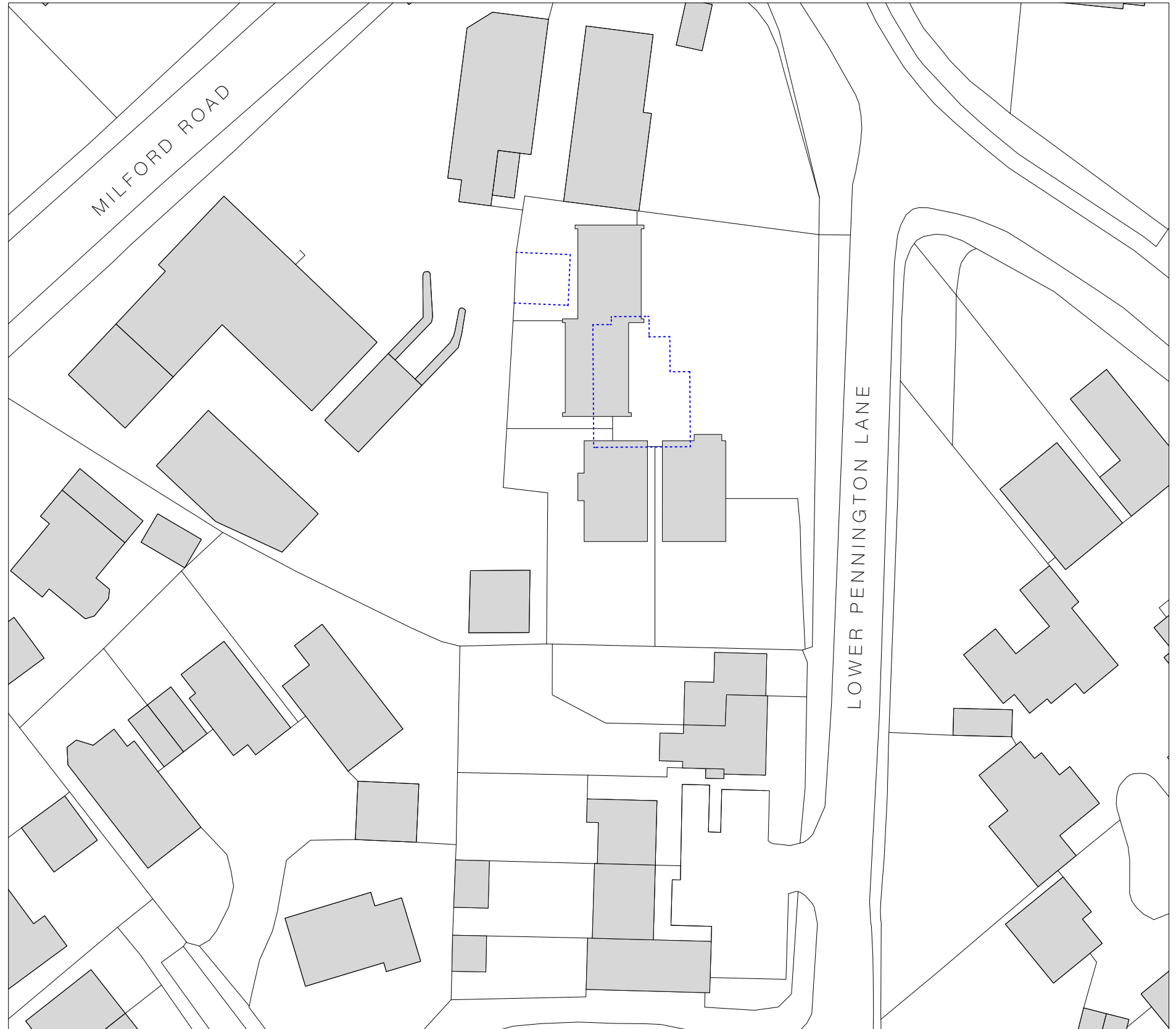
david james architects & partners ltd

tel: 01202 755633



Location Plan
Scale 1:1250 @A3

0 5 10 20 40m



Location Plan
Scale 1:500 @A3



Outline of Existing to be demolished



Outline of Proposed

0 2 4 6 8 10 20m



rev:
A House 4 moved forward 16.05.23. HVG
B Houses relocated 13.07.23. HVG
C Houses layout revised 04.08.23. HVG

Drawn By : HVG Checked By : DJ

Crossways Lower Pennington Lane, Lymington

Block and Location Plan | 2121 51C | davidjames architects & partners ltd

tel: 01202 755633

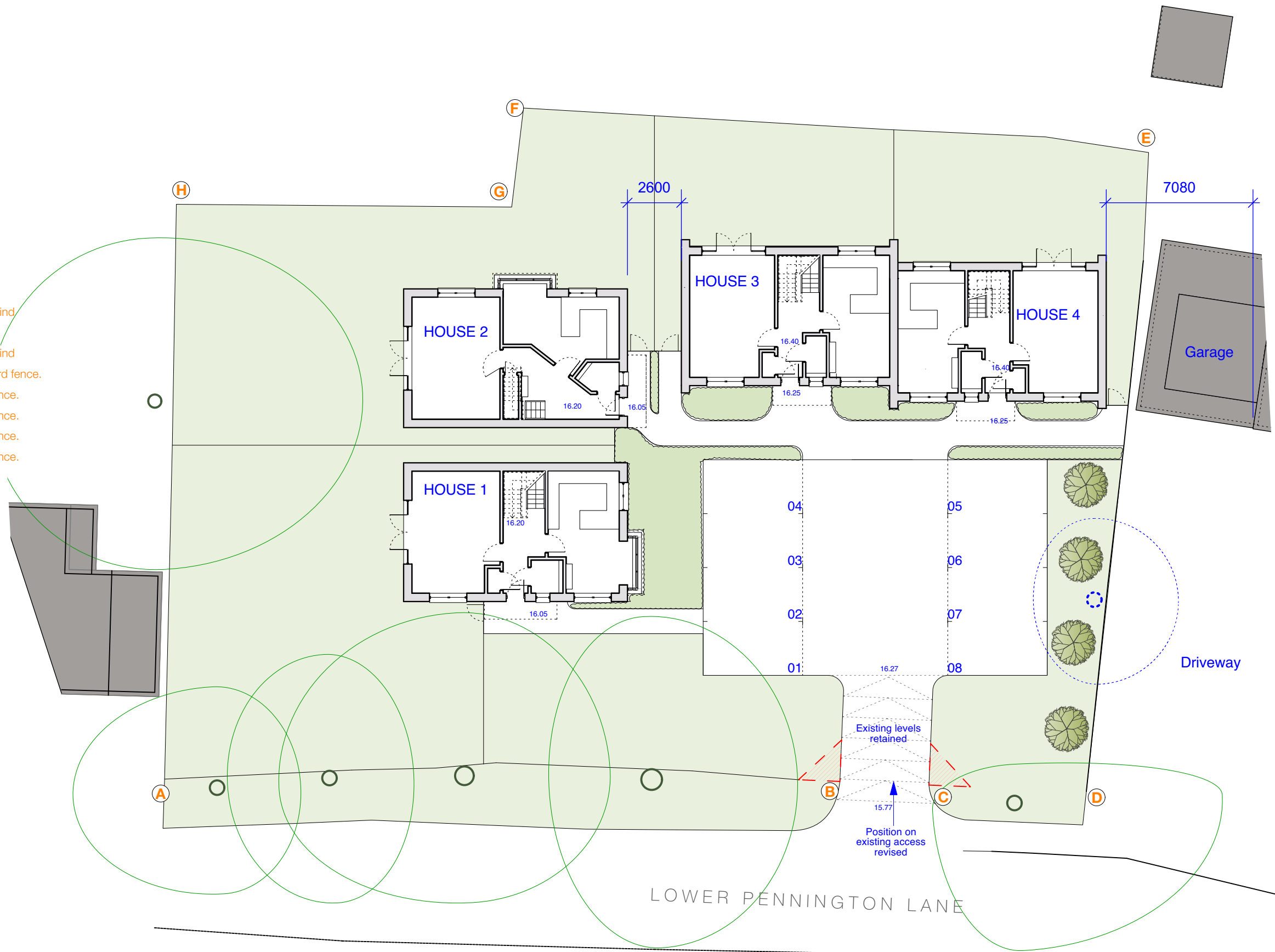
AREA SCHEDULE

House 1 - 1787 sqft
 House 2 - 1787 sqft
 House 3 - 1713 sqft
 House 4 - 1225 sqft

-  Existing Trees
-  Proposed Trees
-  Tree to be felled

SITE SCHEDULE

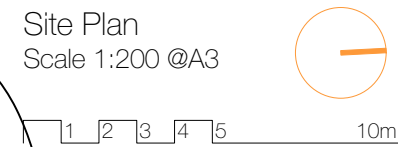
- A-B** Mild steel railing with hedging behind
- B-C** Vehicular and pedestrian access
- C-D** Mild steel railing with hedging behind
- D-E** New 1.8m high timber closedboard fence.
- E-F** As existing timber closedboard fence.
- F-G** As existing timber closedboard fence.
- G-H** As existing timber closedboard fence.
- H-A** As existing timber closedboard fence.



www.davidjamesarchitects.co.uk

rev:
 Rev A_ 16.05.23_Boundary line revised and House 4 moved forward
 Rev B_ 12.06.23_Site plan parking area revised_HVG
 Rev C_ 26.06.23_House 3 & 4 semidetached_HVG
 Rev D_ 12.07.23_Site plan redesigned_HVG
 Rev E_ 04.08.23_Site plan redesigned_HVG
 Rev F_ 29.08.23_House areas revised_HVG
 Rev G_ 23.11.23_House areas revised_HVG

Site Plan
 Scale 1:200 @A3



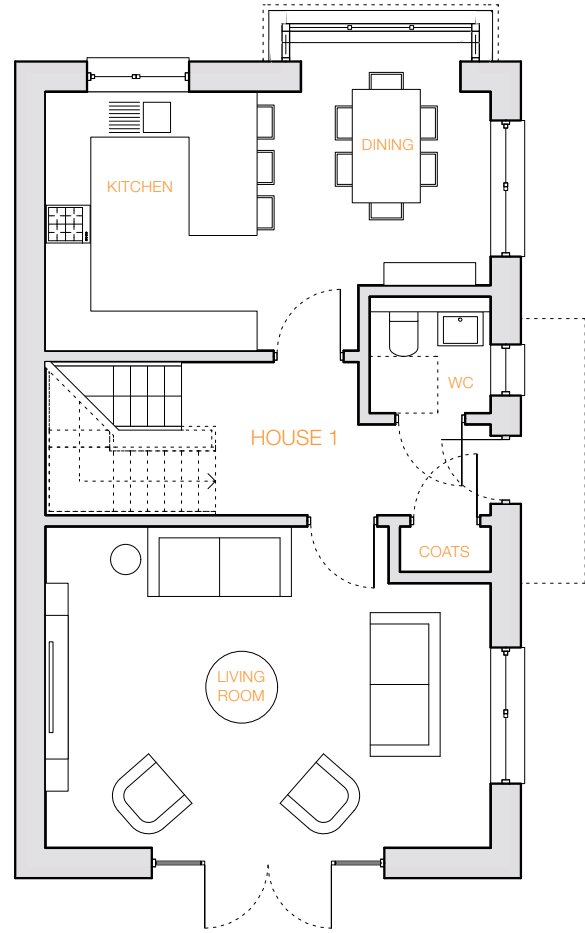
Crossways Lower Pennington Lane, Lymington

Site Plan | **2121 52G** | davidjames architects & partners ltd

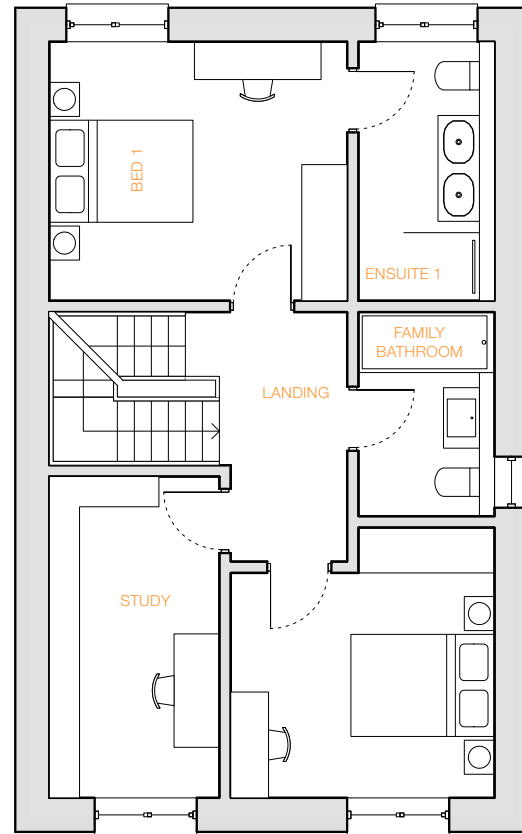
tel: 01202 755633

Drawn By : HVG Checked By : DJ

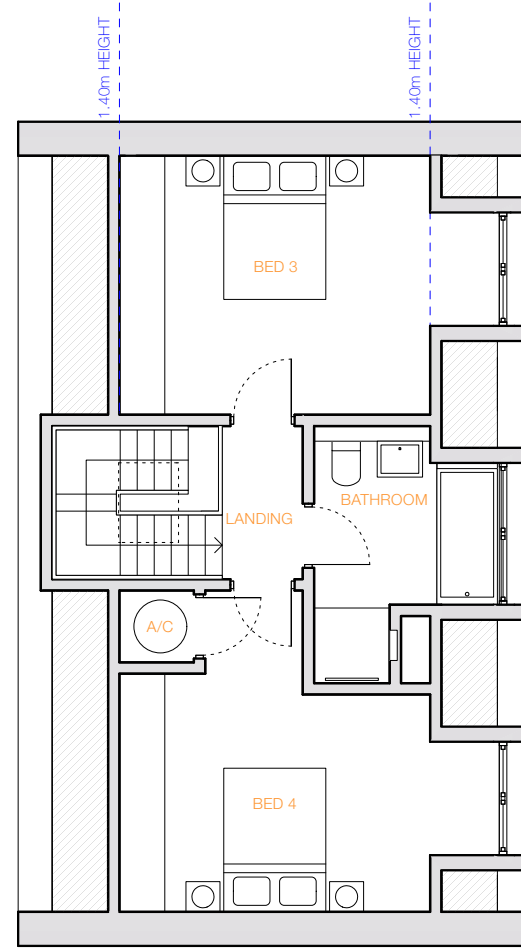
Note: Do not scale from this drawing. This drawing is copyright and remains the property of David James Architects & Partners Ltd. Unauthorised use for any purpose is prohibited. ©



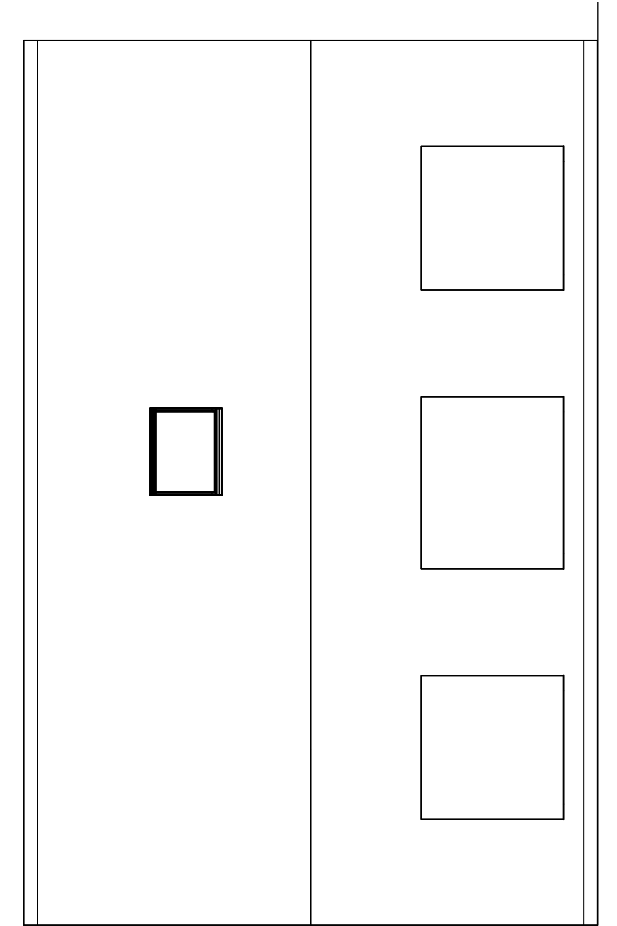
Ground Floor Plan
Scale 1:100 @A3



First Floor Plan
Scale 1:100 @A3

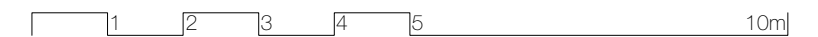


Second Floor Plan
Scale 1:100 @A3



Roof Plan
Scale 1:100 @A3

HOUSE 1



revisions: Rev A_2023.04.12_Roof plan added_AW
Rev B_2023.06.12_Roof plan revised_HVG
Rev C_2023.06.19_Roof plan revised_HVG
Rev D_2023.07.13_Plan revised_HVG
Rev E_2023.08.04_Plan revised_HVG
Rev F_2023.11.23_Dormers added to second floor_HVG

Crossways Lower Pennington Lane, Lymington

Drawn By : HVG Checked By : DJ

Note: Do not scale from this drawing. This drawing is copyright and remains the property of David James Architects & Partners Ltd. Unauthorised use for any purpose is prohibited. ©



House 1 - East Elevation
Scale 1: 100



House 1 - North Elevation
Scale 1: 100







House 1 - West Elevation
Scale 1: 100

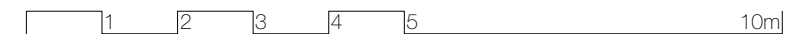


House 1 - South Elevation
Scale 1: 100

MATERIALS KEY

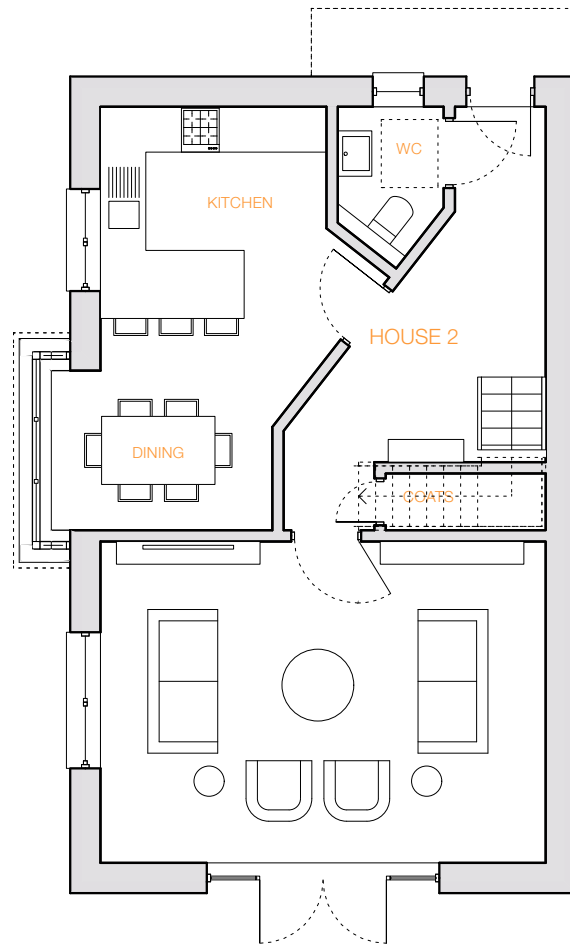
-  UPVC window frames / facias
-  Timber Cladding
-  Buff Brick
-  Artificial Slate roof tiles.

HOUSE 1

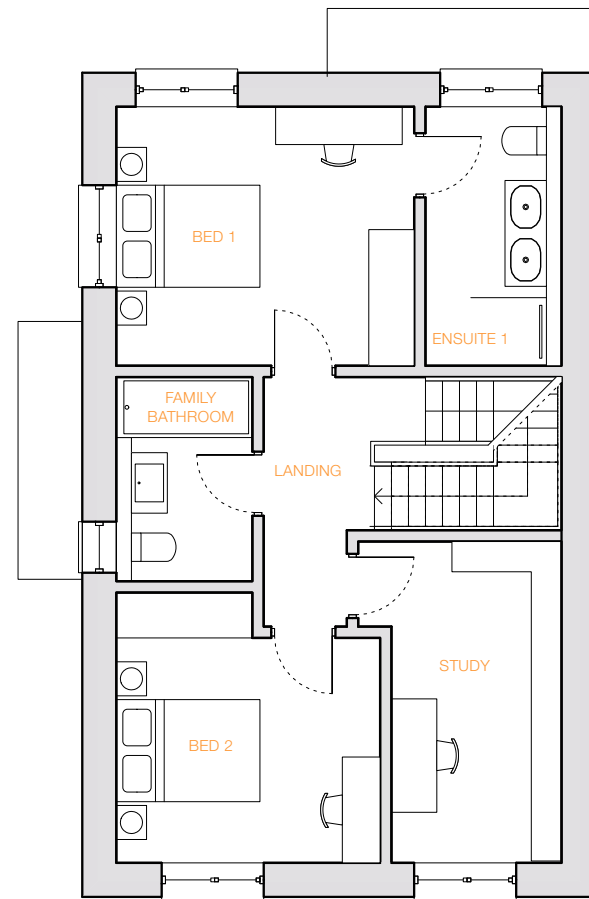


revisions: Rev A_2023.06.12_Roof plan revised_HVG
 Rev B_2023.06.19_Roof plan revised_HVG
 Rev C_2023.07.13_Revised to match floor plans_HVG
 Rev D_2023.08.04_Revised to match floor plans_HVG
 Rev E_2023.11.23_Dormers added to second floor_HVG

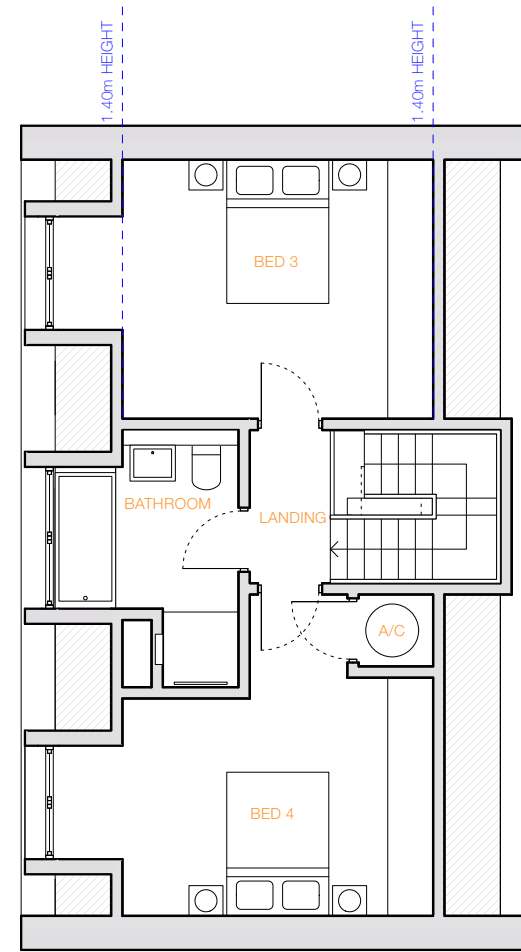
Crossways Lower Pennington Lane, Lymington



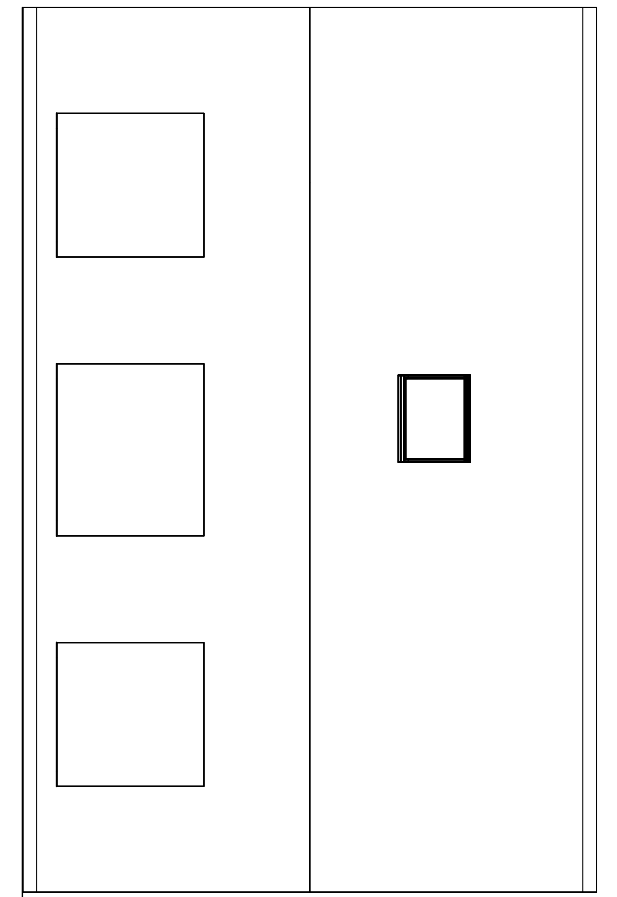
Ground Floor Plan
Scale 1:100 @A3



First Floor Plan
Scale 1:100 @A3

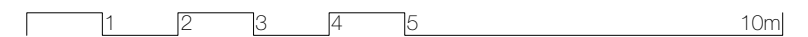


Second Floor Plan
Scale 1:100 @A3



Roof Plan
Scale 1:100 @A3

HOUSE 2



revisions: Rev A_2023.04.12_Roof plan added_AW
Rev B_2023.06.12_Roof plan revised_HVG
Rev C_2023.06.19_Roof plan revised_HVG
Rev D_2023.07.13_Plan revised_HVG
Rev E_2023.08.04_Plan revised_HVG
Rev F_2023.11.23_Dormers added to second floor_HVG

Crossways Lower Pennington Lane, Lymington



House 2 - West Elevation
Scale 1: 100



House 2 - North Elevation
Scale 1: 100


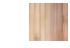




House 2 - East Elevation
Scale 1: 100

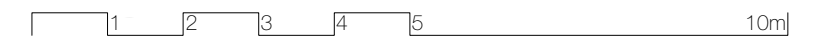


House 2 - South Elevation
Scale 1: 100

MATERIALS KEY

-  UPVC window frames / fascias
-  Timber Cladding
-  Buff Brick
-  Artificial Slate roof tiles.

HOUSE 2



revisions: Rev A_2023.06.12_Roof plan revised_HVG
 Rev B_2023.06.19_Roof plan revised_HVG
 Rev C_2023.07.13_Revised to match floor plans_HVG
 Rev D_2023.08.04_Revised to match floor plans_HVG
 Rev E_2023.11.23_Dormers added to second floor_HVG

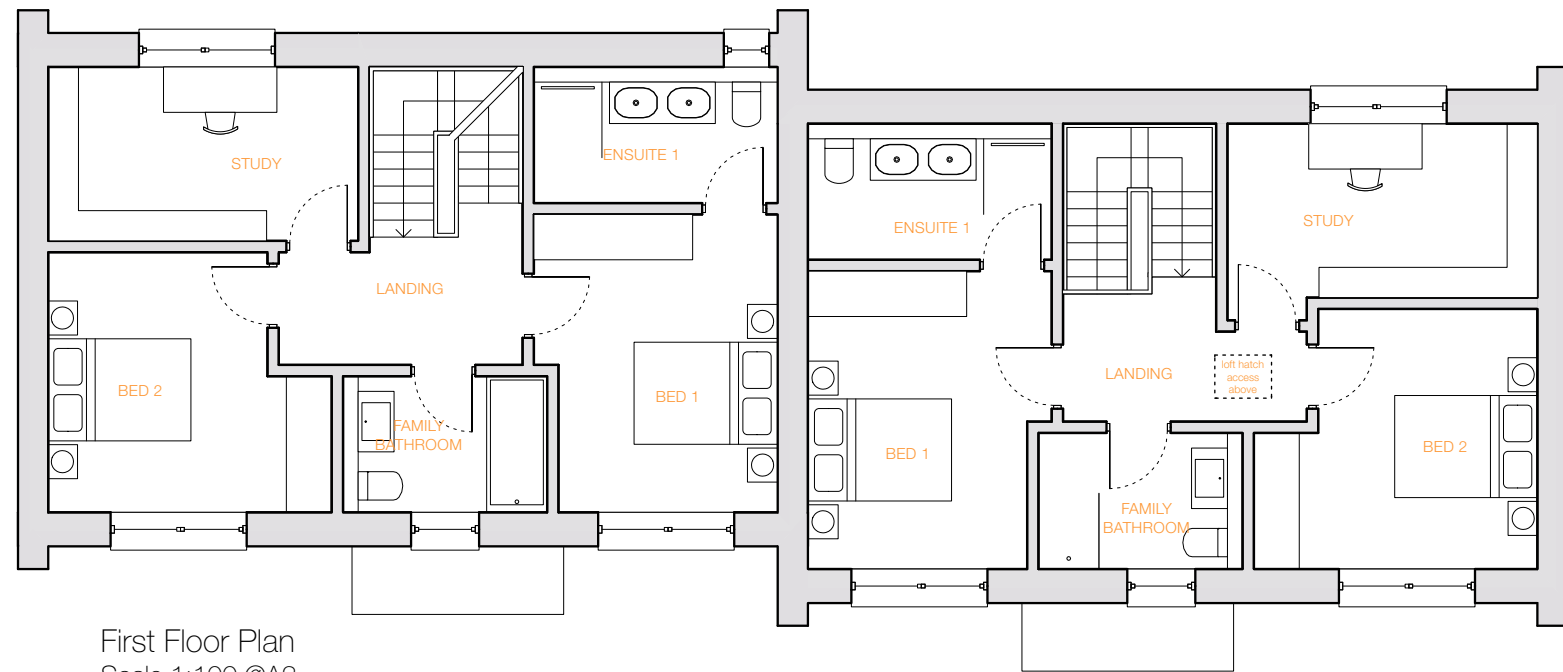
Crossways Lower Pennington Lane, Lymington

House 2 Elevation | 2121 56E | davidjames architects & partners ltd
tel: 01202 755633

Drawn By : HVG Checked By : DJ

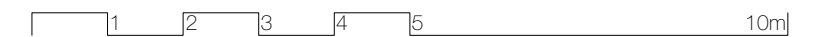


Ground Floor Plan
Scale 1:100 @A3



First Floor Plan
Scale 1:100 @A3

HOUSE 3 & 4



revisions: Rev A_2023.04.12_Roof plan added_AW
Rev B_2023.06.12_Roof plan revised_HVG
Rev C_2023.06.19_Roof plan revised_HVG
Rev D_2023.07.13_Plan revised_HVG
Rev E_2023.08.04_Plan revised_HVG
Rev F_2023.11.23_Dormers added to second floor H3_HVG

Crossways Lower Pennington Lane, Lymington

House 3 & 4 Floor Plans

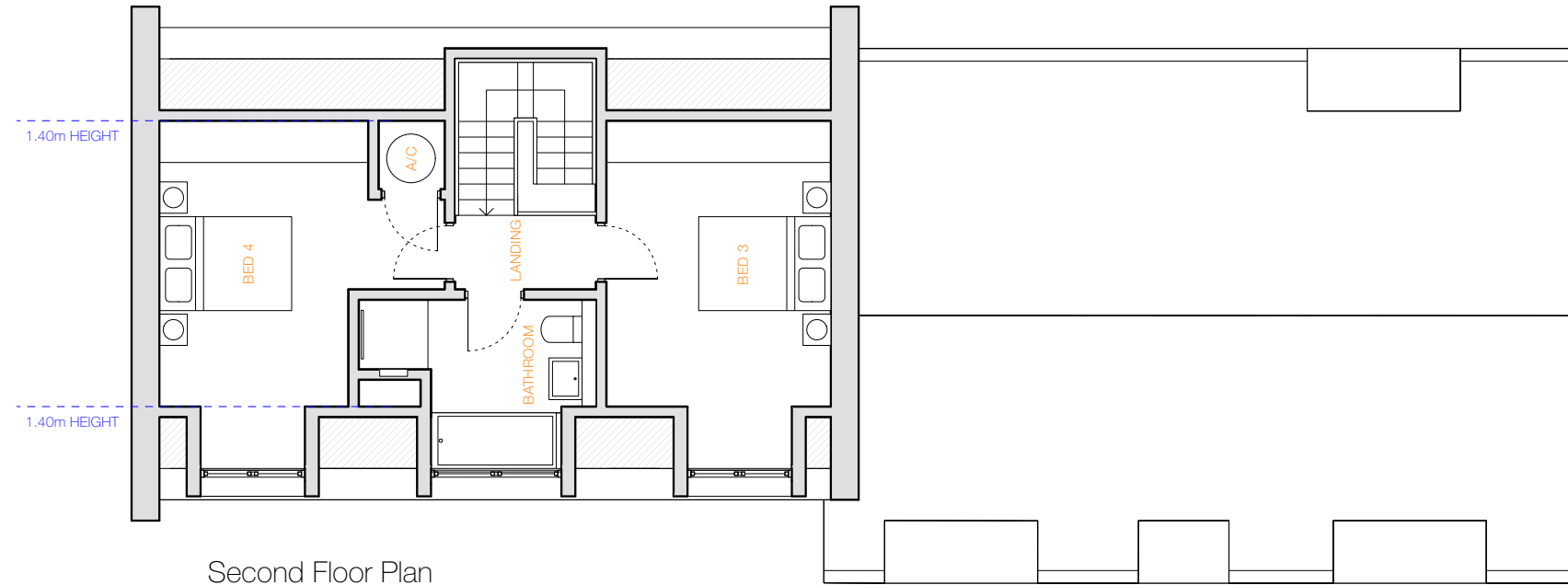
2121 57F

davidjames architects & partners ltd

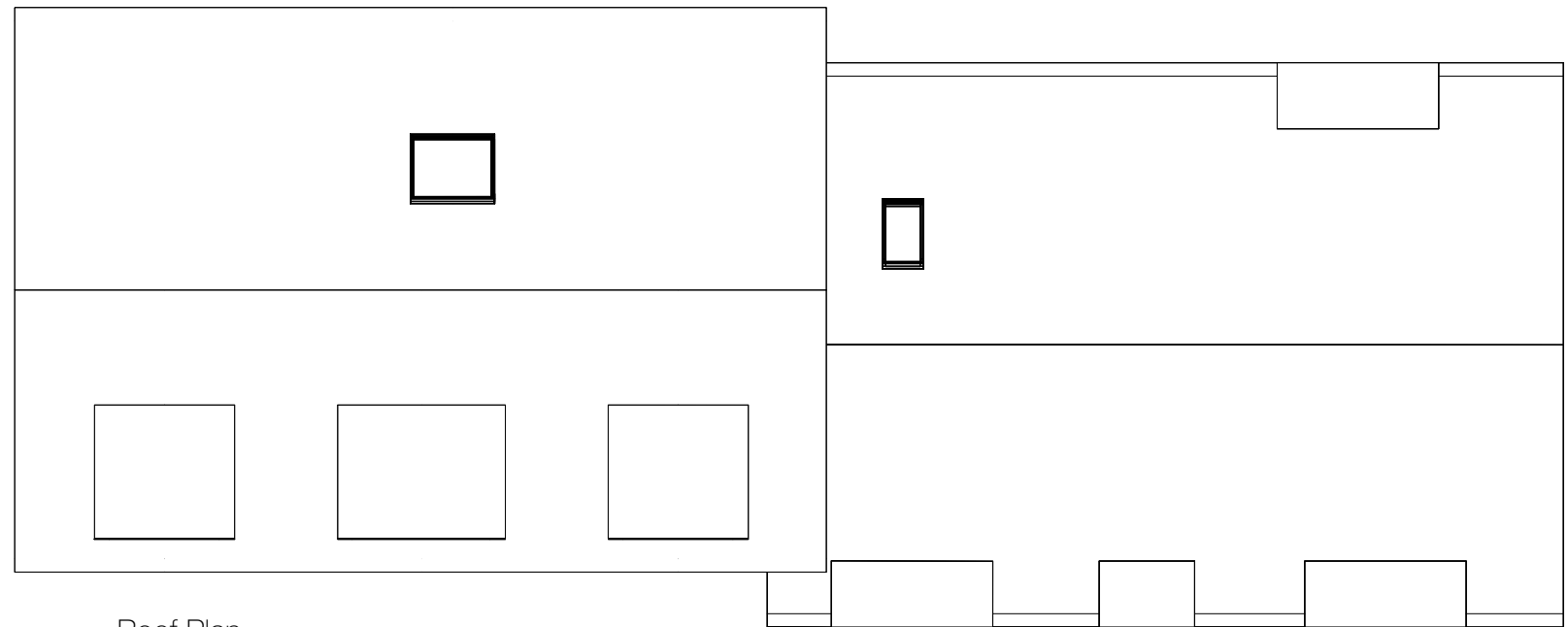
tel: 01202 755633

Drawn By : HVG Checked By : DJ

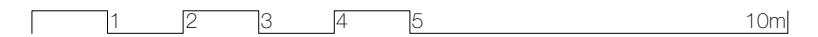
Note: Do not scale from this drawing. This drawing is copyright and remains the property of David James Architects & Partners Ltd. Unauthorised use for any purpose is prohibited. ©



Second Floor Plan
Scale 1:100 @A3



Roof Plan
Scale 1:100 @A3




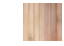


revisions: Rev A_2023.06.12_Roof plan revised_HVG
Rev B_2023.06.19_Roof plan revised_HVG
Rev C_2023.07.13_Revised to match floor plans_HVG
Rev D_2023.08.04_Revised Houses 3 & 4 layouts_HVG
Rev E_2023.11.23_Dormers added to second floor H3_HVG

Crossways Lower Pennington Lane, Lymington

House 3 & 4 Plans | **2121 58E** | davidjames architects & partners ltd
tel: 01202 755633

Drawn By : HVG Checked By : DJ

MATERIALS KEY

-  UPVC window frames / fascias
-  Timber Cladding
-  Buff Brick
-  Artificial Slate roof tiles.

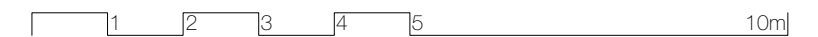
HOUSE 3 & 4



House 3 & 4 - East Elevation
Scale 1: 100




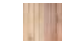


House 3 & 4 - North Elevation
Scale 1: 100



revisions: Rev A_2023.04.12_Roof plan added_AW
 Rev B_2023.06.12_Roof plan revised_HVG
 Rev C_2023.06.19_Roof plan revised_HVG
 Rev D_2023.07.13_Plan revised_HVG
 Rev E_2023.08.04_Revised elevations H3 & H4_HVG
 Rev F_2023.11.23_Dormers added to second floor H3_HVG

Crossways Lower Pennington Lane, Lymington

MATERIALS KEY

-  UPVC window frames / fascias
-  Timber Cladding
-  Buff Brick
-  Artificial Slate roof tiles.

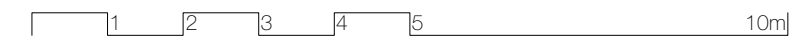
HOUSE 3 & 4



House 4 - West Elevation
Scale 1: 100



House 4 - South Elevation
Scale 1: 100

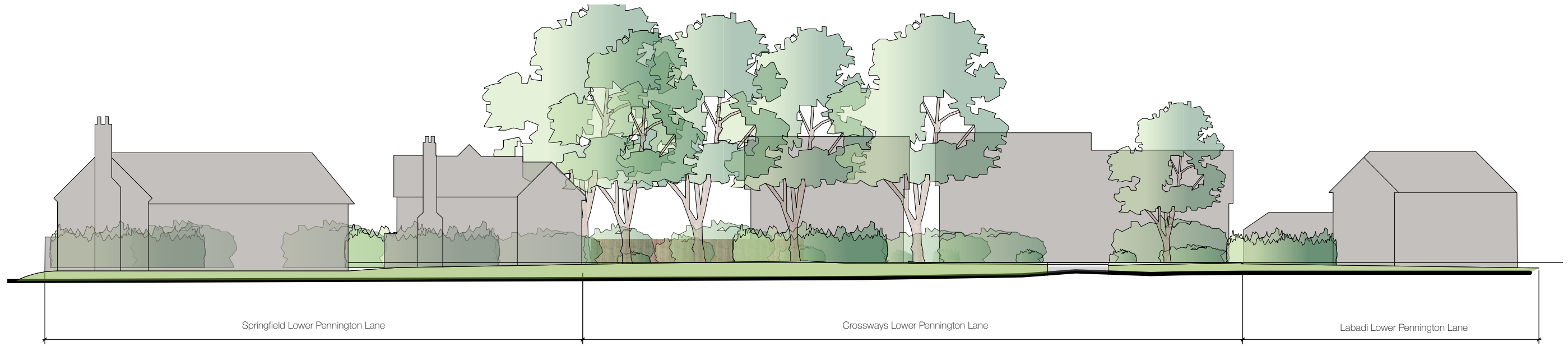


revisions: Rev A_2023.06.12_Roof plan revised_HVG
 Rev B_2023.06.19_Roof plan revised_HVG
 Rev C_2023.07.13_Revised to match floor plans_HVG
 Rev D_2023.08.04_Revised elevations H3 & H4_HVG
 Rev E_2023.11.23_Dormers added to second floor H3_HVG

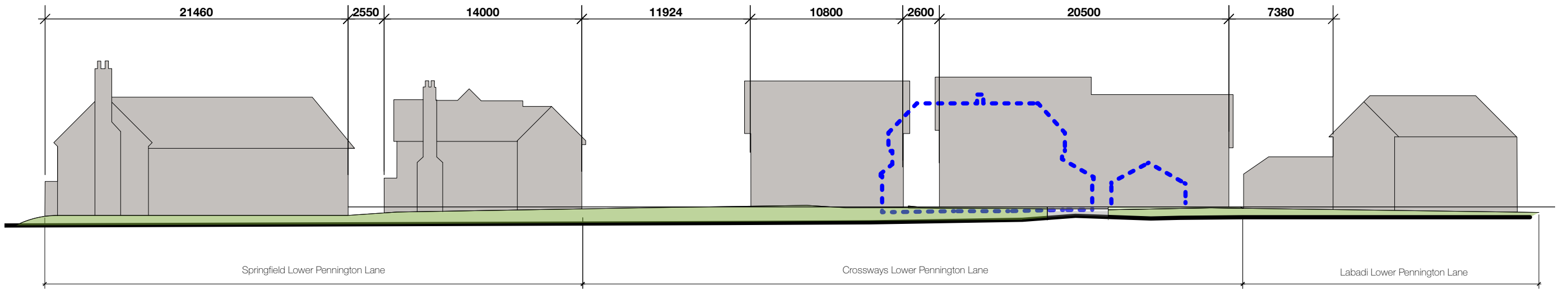
Crossways Lower Pennington Lane, Lymington

Drawn By : HVG Checked By : DJ

Note: Do not scale from this drawing. This drawing is copyright and remains the property of David James Architects & Partners Ltd. Unauthorised use for any purpose is prohibited. ©




Indicative Proposed Street Scene along Pennington Lane.
Scale 1: 300



Indicative Proposed Street Scene along Pennington Lane.
Scale 1: 300

 Outline of Existing to be demolished

 10m

revisions: Rev A_2023.06.12_Roof plan revised_HVG
 Rev B_2023.06.19_Roof revised_HVG
 Rev C_2023.06.26_House 3 & 4 semidetached_HVG
 Rev D_2023.06.28_Dimensions added_HVG
 Rev E_2023.07.13_Revised to match site plan_HVG
 Rev F_2023.08.04_Revised to match changes to the houses_HVG

Drawn By : HVG Checked By : DJ

Crossways Lower Pennington Lane, Lymington

Indicative Street Elevation | **2121 61F** | davidjames architects & partners ltd
 tel: 01202 755633