

NOTES

GENERAL NOTES :-

ALL LEVELS ARE IN METRES DERIVED FROM GPS TRANSFORMATION.
THIS DRAWING HAS BEEN PRODUCED WITH A PLOT SCALE ACCURACY OF 1:50

BUILDING SURVEY KEY :-

- | | |
|---------------------------|-----------------------------------|
| ⊕ - room height | hw - hot water tank |
| ⊖ - floor boards | ic - inspection cover |
| ∅ - pipe diameter | il - invert level |
| q/b - air brick | mb - manhole cover |
| ab - alarm box | OSBM - Ordnance Survey bench mark |
| ah - arch head height | q/dies - quarry tiles |
| bd - back drop | rad - radiator |
| bk - brick | rt - roof right |
| conc - concrete | rwp - rain water pipe |
| cr - cable riser | sfc - soil filled chamber |
| db - fuse box | sh - floor to sill height |
| dh - door height | sp - arch springing point |
| dp - depth | sp - soil pipe |
| e/mtr - electricity metre | susc - suspended ceiling |
| elec - electricity | svp - soil vent pipe |
| f/p - fire place | Lr/cil - heated towel rail |
| fh - floor to head height | TBM - temporary bench mark |
| fl - floor level | tl - threshold level |
| fs - floor to sill height | top - top of cap |
| g - gas | top - top of pipe |
| g/mtr - gas metre | tot - top of tank |
| gr - gas riser | u/s - underside height |
| hd - hand dryer | U/L - unable to lift |
| hr - heater | vp - vent pipe |
| | wf - water fountain |
| | wfc - water filled chamber |
| | wp - waste pipe |

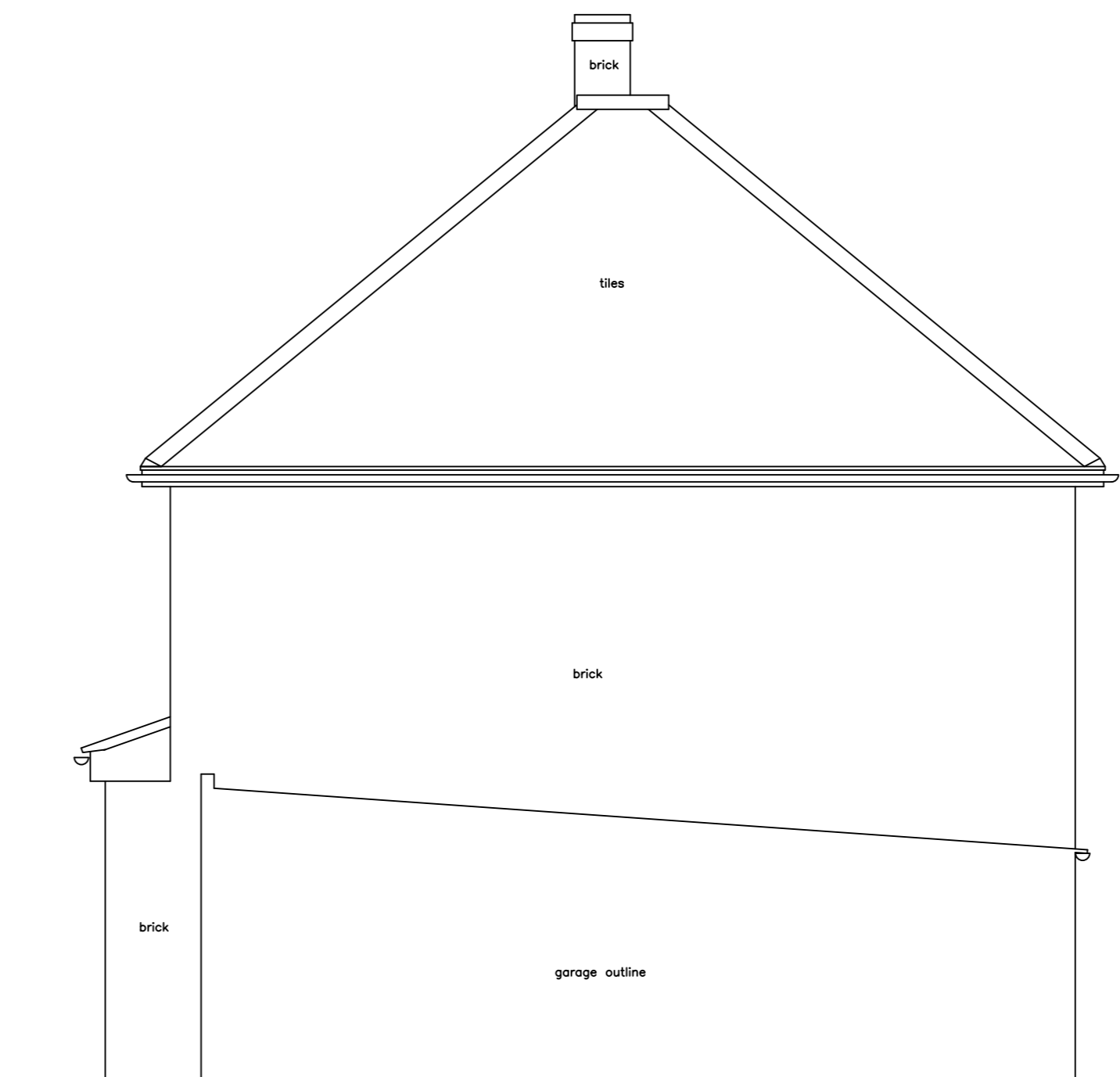
SERVICES KEY :-

- | | | | |
|---|--------------------------------|-----|--------------------------|
| ⊗ | stg light | AK | alarm keypad |
| ⊙ | light | IR | intercom |
| ⊗ | wall light | ACP | alarm control panel |
| ⊙ | emergency light | SPK | speaker |
| ⊙ | spot light | PRJ | projector |
| ⊙ | pull cord | CCV | closed circuit tv |
| ⊙ | vent/extractor | SR | sensor |
| ⊙ | switch | NC | network point |
| ⊙ | light switch | CS | control panel |
| ⊙ | fused switch | S | smoke detector |
| ⊙ | lockator switch | HD | heat detector |
| ⊙ | cooker switch | FA | fire alarm siren |
| ⊙ | fuse | FB | fire break glass |
| ⊙ | blank socket | SP | fire scintillator |
| ⊙ | single socket | TR | fire tanket |
| ⊙ | double socket | WF | water fire extinguisher |
| ⊙ | ceiling socket/fuse/switch | CO2 | CO2 fire extinguisher |
| ⊙ | thermostat | PO | powder fire extinguisher |
| ⊙ | card access point (swipe card) | FA | fire extinguisher |
| ⊙ | emergency door release | FAP | fire alarm control panel |



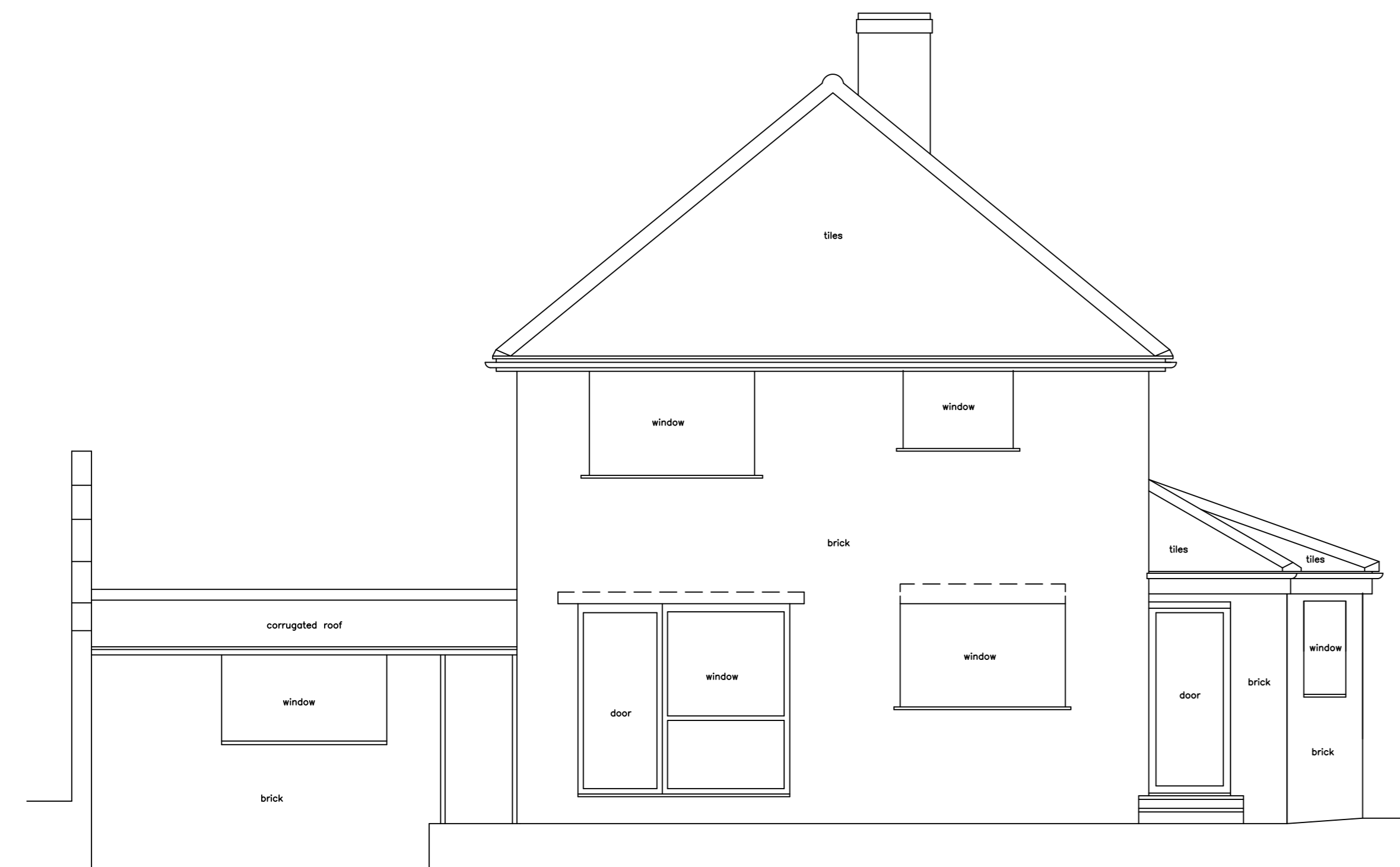
Datum 100.00m

NORTH EAST ELEVATION



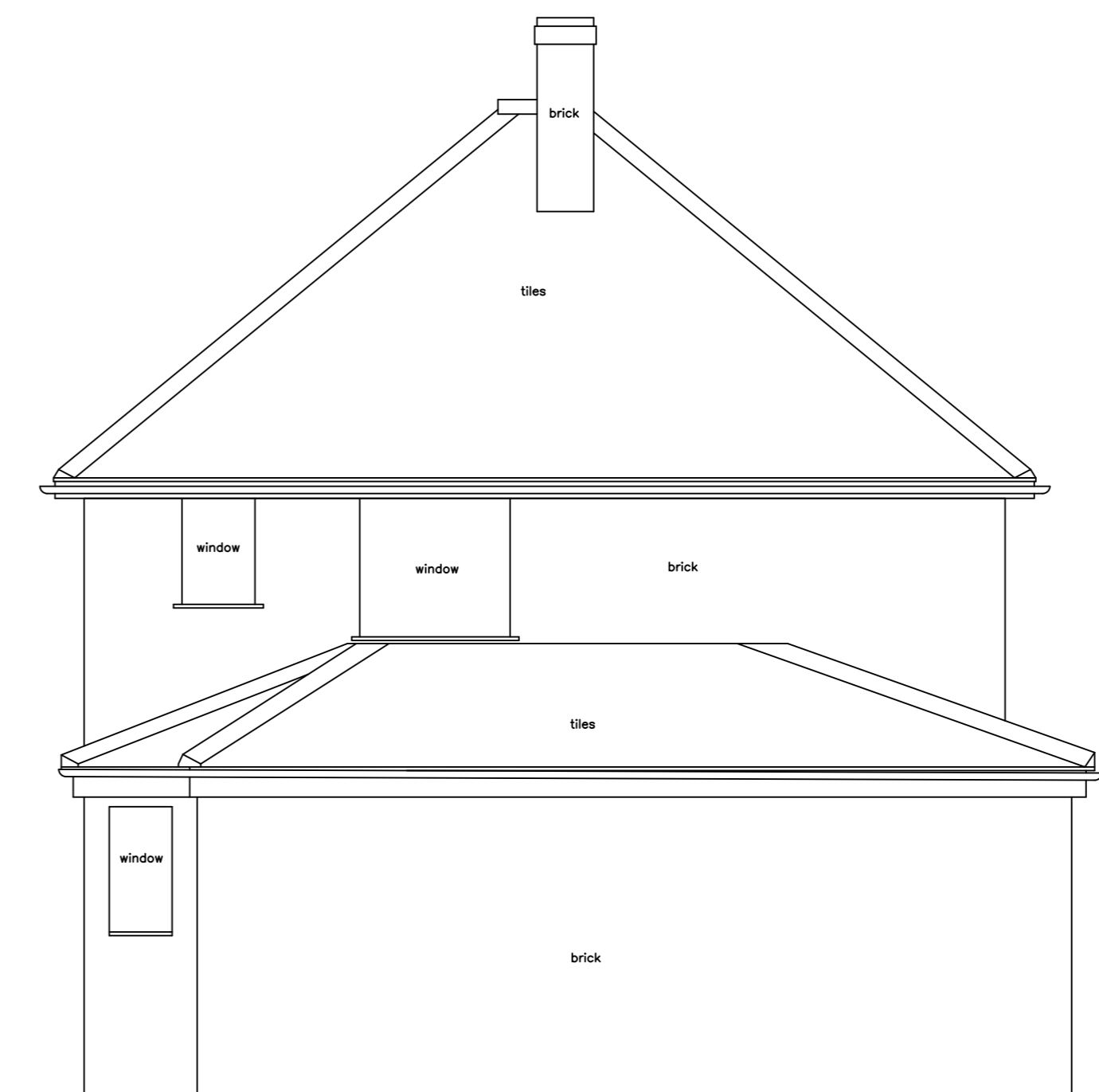
Datum 100.00m

NORTH WEST ELEVATION



Datum 100.00m

SOUTH WEST ELEVATION



Datum 100.00m

SOUTH EAST ELEVATION

NORTH POINT :-

SHEET LAYOUT :-



MIDLAND SURVEY LTD

HEAD OFFICE
Cromwell House, Westfield Road, Southam, Warwickshire, CV47 0JH.
Tel: 01926 810811 Fax: 01926 810812
E-Mail: mail@midlandsurvey.co.uk
www.midlandsurvey.co.uk

Client	ALBRIGHT DENE
Project	3 TOOT HILL BUTTS, HEADINGTON, OXFORD, OXFORDSHIRE, OX3 8LB
Title	BASIC ELEVATIONS
Date	APRIL 2019
Scale	1:50/BA1
Dwg No	33743 - 2
Surveyor	L.H
Checked	M.W

TOPOGRAPHICAL (LAND) SURVEYORS / UTILITY SURVEYORS
BUILDING MEASUREMENT SURVEYORS / 3D LASER SCANNING



© Copyright Midland Survey Ltd. Reproduction of this information is prohibited without written authorisation from Midland Survey Ltd.