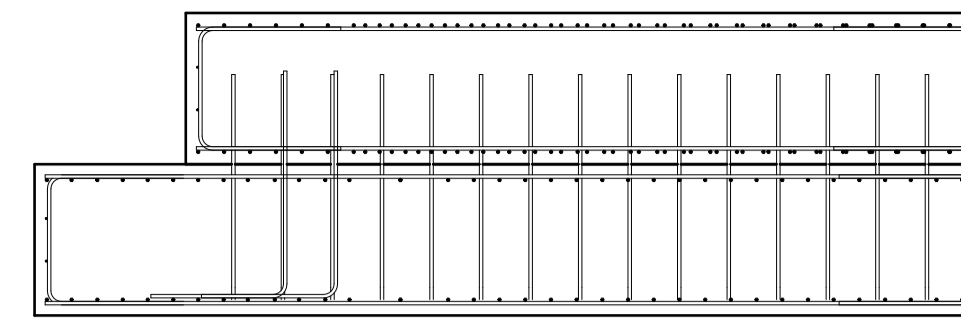
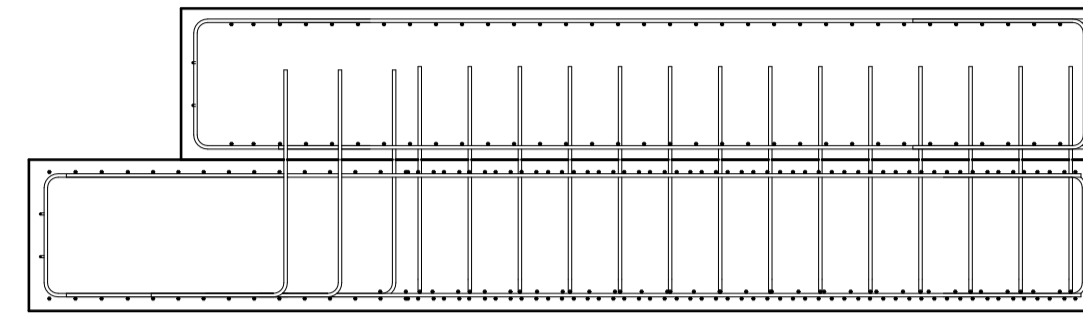


RC - Lower Slab
1 : 50



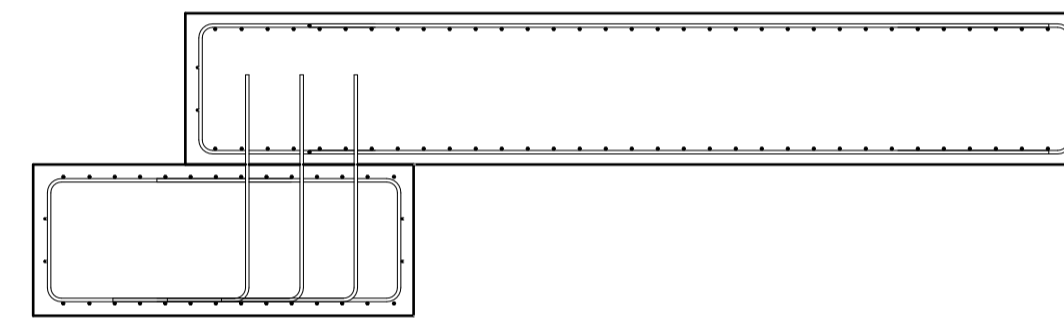
Section RC1

1 : 50



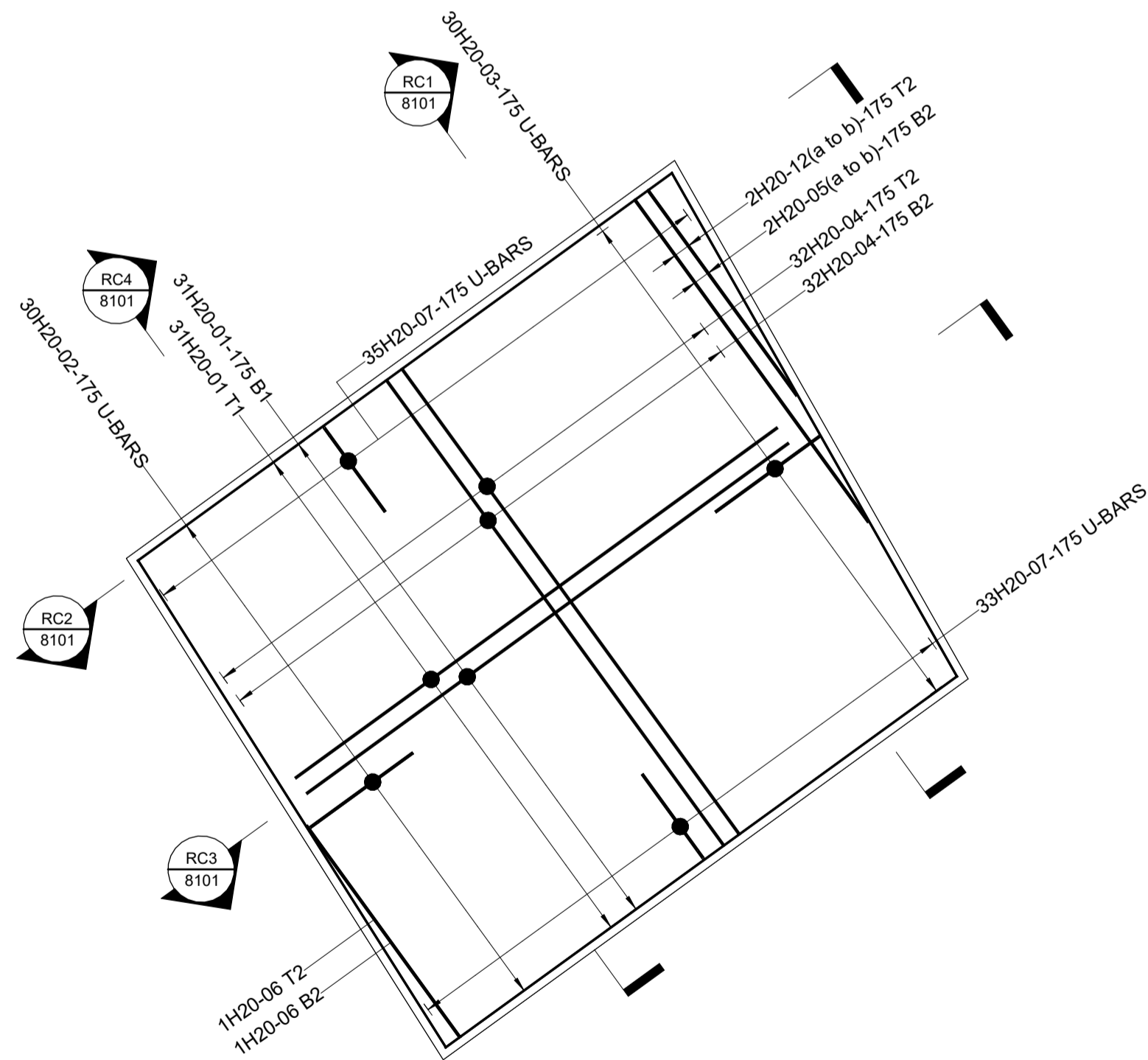
Section RC2

1 : 50



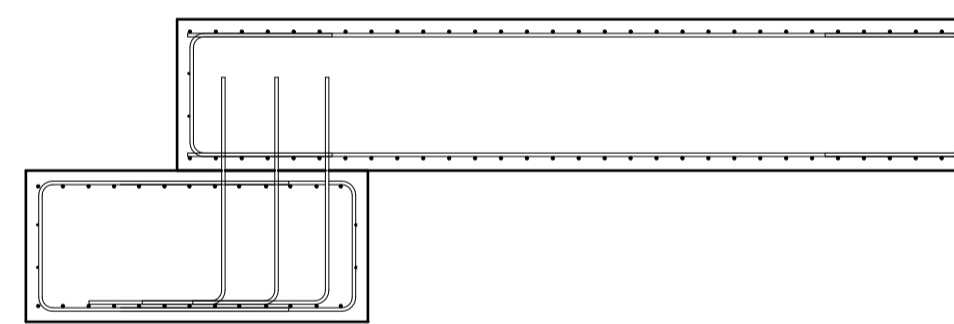
Section RC3

1 : 50



RC - Upper Slab

1 : 50



Section RC4

1 : 50

| Member | Bar mark | Type and size | No. of mbrs | No. of bars in each | Total | Length of each bar l mm | Shape Code | A* mm | B* mm | C* mm | D* mm | E* mm | F* mm | R* mm | Weight (kg) | Rev |
|----------------|----------|---------------|-------------|---------------------|-------|----------------------------|------------|----------|----------|----------|----------|----------|----------|----------|-------------|-----|
| Lower Slab 01 | H20 | | 1 | 27 | 27 | 4050 | 21 | 1655 | 860 | 1655 | | | | | 270 | |
| Lower Slab 02 | H20 | | 1 | 26 | 26 | 3850 | 21 | 1555 | 860 | 1555 | | | | | 247 | |
| Lower Slab 03 | H20 | | 1 | 1 | 1 | 1900 | 21 | 580 | 860 | 580 | | | | | 5 | |
| Lower Slab 05 | H20 | | 1 | 12 | 12 | 2575 | 21 | 940 | 815 | 940 | | | | | 77 | |
| Lower Slab 06 | H20 | | 1 | 26 | 26 | 6700 | 00 | 6710 | | | | | | | 430 | |
| Lower Slab 07 | H20 | | 1 | 61 | 61 | 3925 | 21 | 1615 | 815 | 1615 | | | | | 591 | |
| Lower Slab 08 | H20 | | 1 | 29 | 29 | 2550 | 21 | 900 | 860 | 900 | | | | | 182 | |
| Lower Slab 09 | H20 | | 1 | 24 | 24 | 6175 | 00 | 6170 | | | | | | | 365 | |
| Lower Slab 10a | H20 | | 1 | 1 | 1 | 1400 | 00 | 1410 | | | | | | | 3 | |
| Lower Slab 10b | H20 | | 1 | 1 | 1 | 2950 | 00 | 2950 | | | | | | | 7 | |
| Lower Slab 10c | H20 | | 1 | 1 | 1 | 4475 | 00 | 4485 | | | | | | | 11 | |
| Lower Slab 11a | H20 | | 1 | 1 | 1 | 1625 | 00 | 1635 | | | | | | | 4 | |
| Lower Slab 11b | H20 | | 1 | 1 | 1 | 2925 | 00 | 2925 | | | | | | | 7 | |
| Lower Slab 12a | H20 | | 1 | 1 | 1 | 1400 | 00 | 1410 | | | | | | | 3 | |
| Lower Slab 12b | H20 | | 1 | 1 | 1 | 2950 | 00 | 2950 | | | | | | | 7 | |
| Lower Slab 12c | H20 | | 1 | 1 | 1 | 4475 | 00 | 4485 | | | | | | | 11 | |
| Lower Slab 13a | H20 | | 1 | 1 | 1 | 1625 | 00 | 1635 | | | | | | | 4 | |
| Lower Slab 13b | H20 | | 1 | 1 | 1 | 2925 | 00 | 2925 | | | | | | | 7 | |
| Lower Slab 14 | H12 | | 1 | 2 | 2 | 6075 | 00 | 6080 | | | | | | | 11 | |
| Lower Slab 15 | H12 | | 1 | 2 | 2 | 2200 | 00 | 2200 | | | | | | | 4 | |
| Lower Slab 16 | H12 | | 1 | 2 | 2 | 3650 | 00 | 3645 | | | | | | | 6 | |
| Lower Slab 17 | H12 | | 1 | 2 | 2 | 4300 | 00 | 4295 | | | | | | | 8 | |
| Lower Slab 18 | H12 | | 1 | 2 | 2 | 1950 | 00 | 1940 | | | | | | | 3 | |
| Lower Slab 19 | H12 | | 1 | 2 | 2 | 6850 | 00 | 6855 | | | | | | | 12 | |
| Lower Slab 20 | H20 | | 1 | 90 | 90 | 2350 | 11 | 1500 | 900 | | | | | | 520 | |
| Page Total | | | | | 318 | 318 | | | | | | | | | 2799 | |

| Member | Bar mark | Type and size | No. of mbrs | No. of bars in each | Total | Length of each bar l mm | Shape Code | A* mm | B* mm | C* mm | D* mm | E* mm | F* mm | R* mm | Weight (kg) | Rev |
|----------------|----------|---------------|-------------|---------------------|-------|----------------------------|------------|----------|----------|----------|----------|----------|----------|----------|-------------|-----|
| Upper Slab 01 | H20 | | 1 | 62 | 62 | 5350 | 00 | 5350 | | | | | | | 818 | |
| Upper Slab 02 | H20 | | 1 | 30 | 30 | 3050 | 21 | 1150 | 860 | 1150 | | | | | 226 | |
| Upper Slab 03 | H20 | | 1 | 30 | 30 | 3075 | 21 | 1165 | 860 | 1165 | | | | | 228 | |
| Upper Slab 04 | H20 | | 1 | 64 | 64 | 5175 | 00 | 5170 | | | | | | | 816 | |
| Upper Slab 05a | H20 | | 1 | 1 | 1 | 2275 | 00 | 2280 | | | | | | | 6 | |
| Upper Slab 05b | H20 | | 1 | 1 | 1 | 3575 | 00 | 3575 | | | | | | | 9 | |
| Upper Slab 06 | H20 | | 1 | 2 | 2 | 2350 | 00 | 2350 | | | | | | | 12 | |
| Upper Slab 07 | H20 | | 1 | 68 | 68 | 2575 | 21 | 940 | 815 | 940 | | | | | 433 | |
| Upper Slab 08 | H12 | | 1 | 2 | 2 | 5200 | 00 | 5205 | | | | | | | 9 | |
| Upper Slab 09 | H12 | | 1 | 2 | 2 | 5675 | 00 | 5685 | | | | | | | 10 | |
| Upper Slab 10 | H12 | | 1 | 2 | 2 | 5175 | 00 | 5180 | | | | | | | 9 | |
| Upper Slab 11 | H12 | | 1 | 2 | 2 | 5925 | 00 | 5935 | | | | | | | 11 | |
| Upper Slab 12a | H20 | | 1 | 1 | 1 | 2275 | 00 | 2280 | | | | | | | 6 | |
| Upper Slab 12b | H20 | | 1 | 1 | 1 | 3575 | 00 | 3575 | | | | | | | 9 | |
| Page Total | | | | | 268 | 268 | | | | | | | | | 2600 | |

Notes

- Do not scale, work to figured dimensions only.
- All materials used in connection with this design must:
 - not be deleterious to health & safety or adversely affect durability of the construction, and
 - where applicable, be in accordance with current British Standards, Codes of Practice and good building practice.
- Drawing to be read in conjunction with drawing No. (s):

| | |
|-------------------------|-------------------------------------|
| PYSW-BPC-01-00-D-S-1601 | Service Trench Cover Slab |
| PYSW-BPC-01-00-D-S-0201 | Repair Phasing & Overview GA |
| PYSW-BPC-01-00-D-S-0301 | Seawall Repair GA |
| PYSW-BPC-01-ZZ-D-S-0501 | Seawall Repair Sections |
| PYSW-BPC-01-00-D-S-8101 | Seawall Repair Pile Cap RC |
| PYSW-BPC-01-ZZ-D-S-0310 | Making Good Plans - Existing + Demo |
| PYSW-BPC-01-ZZ-D-S-0510 | Making Good Sections |
| PYSW-BPC-01-ZZ-D-S-0311 | Making Good Plans - Proposed |
| PYSW-BPC-01-ZZ-D-S-2401 | Staircase and Retaining Wall Detail |
- For setting out, waterproofing, fire proofing details and finishes, refer to Architect's drawings.
- For all other notes, refer to drawing PYSW-BPC-01-ZZ-D-S-0501

P01 Tender Issue RB / JG / BB 05/12/2023
Rev Description By/Chk'd/App'd Date



Client
Princess Yachts

Project
Princess Yachts

Drawing Title
Seawall Repair Pile Cap RC

Suitability Status Code - Description
D2 - Tender

| | | |
|--------------------------------------|-----------------------------|------------------------|
| Internal Project No. 34146 | Scale @ A1 1 : 50 | Revision P01 |
|--------------------------------------|-----------------------------|------------------------|

Drawing Identifier
Project Code - Originator - Function - Space - Firm - Discipline - Number

PYSW - BPC - 01 - 00 - D - S - 8101

www.baileypartnership.co.uk