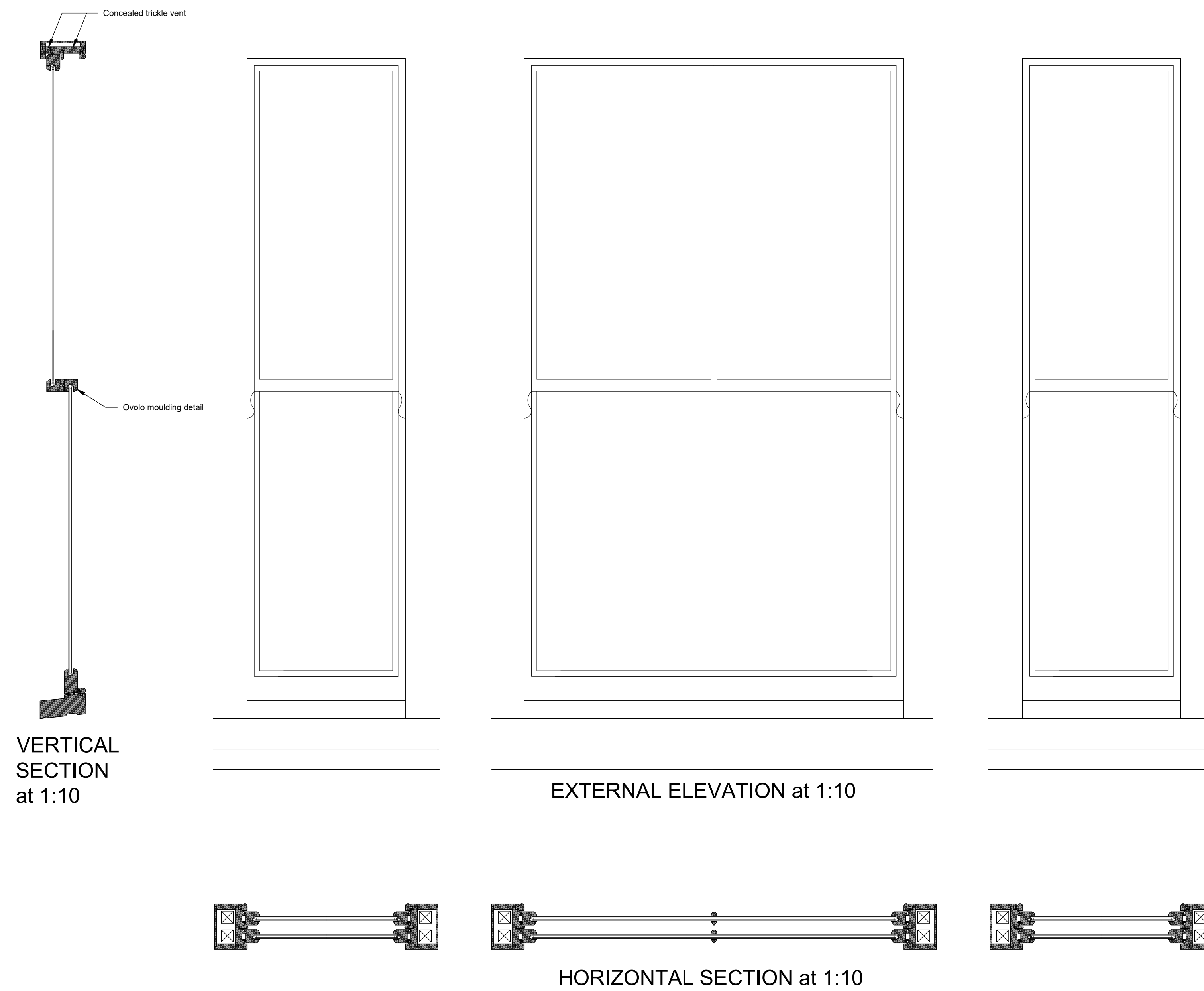
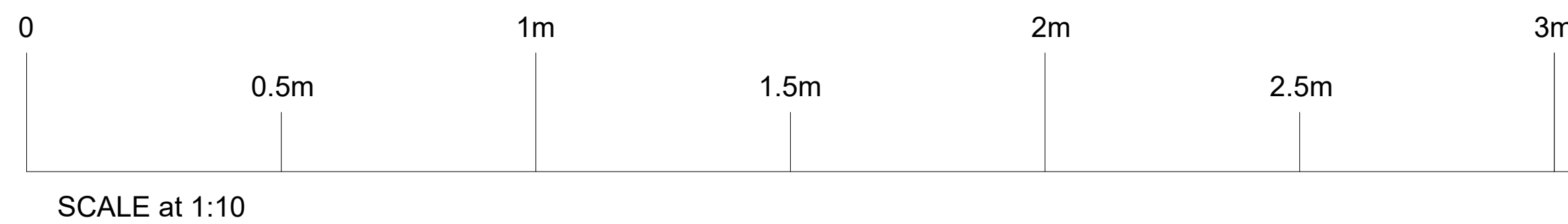
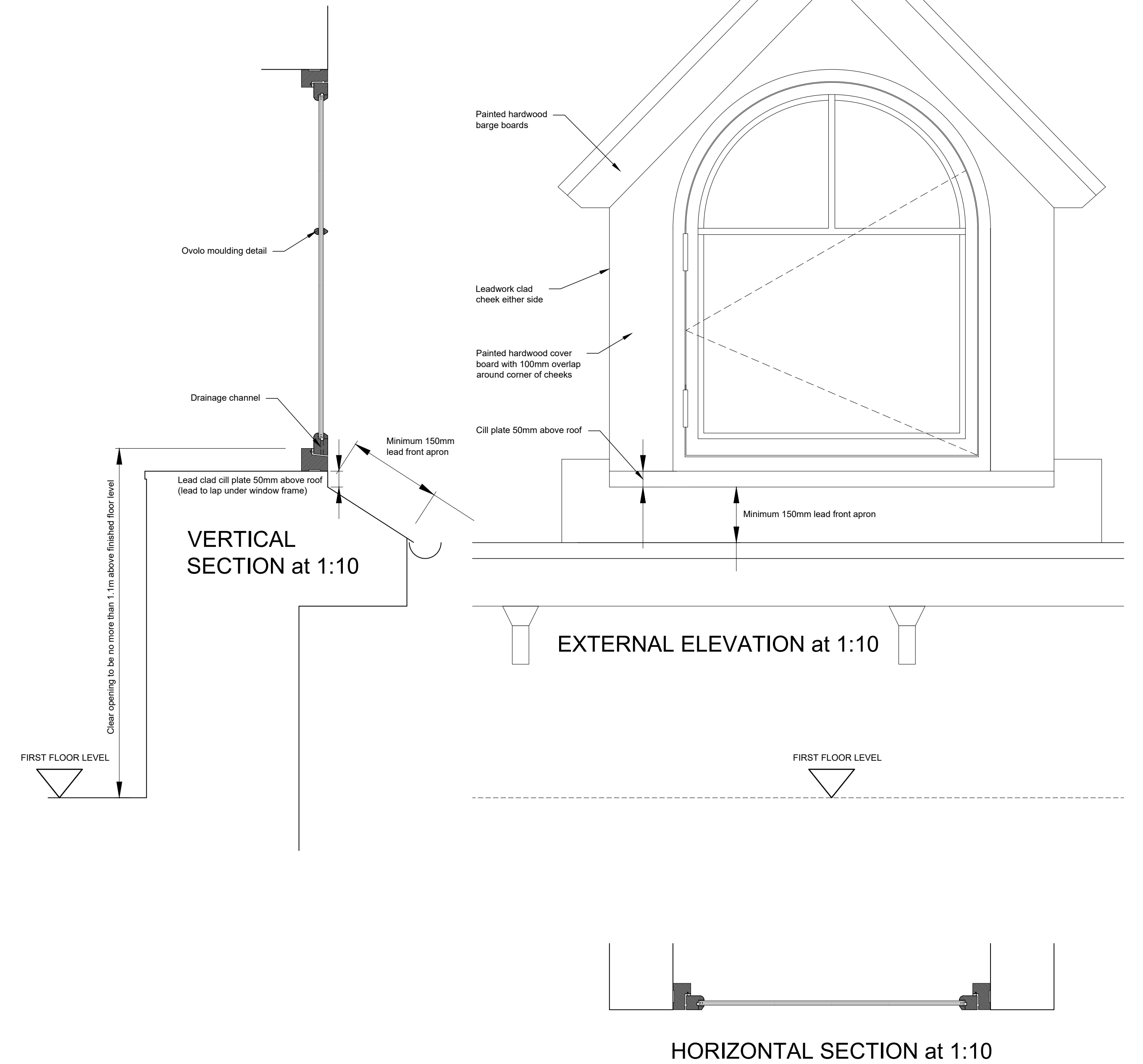


TYPE 'E' WINDOW (e.g. W9/W10/W11) - CONSERVATION SLIMLINE BAY WINDOW TIMBER SLIDING BOX SASH

TYPE 'F' WINDOW (e.g. W26) - CONSERVATION SLIMLINE TRADITIONAL FLUSH CASEMENT



NOTE: BUILDING CONTROL TO CONFIRM IF VENT LOCKS ARE ACCEPTABLE INSTEAD OF TRICKLE VENTS



NOTES

All dimensions to be checked on site prior to manufacture.

Windows to bedrooms to comply with escape requirements - 0.33 sq m clear openable area, 450mm minimum width and height, clear opening to be no more than 1.1m above finished floor level.

Include for trickle vents or vent locks to provide background ventilation.

The minimum U-value standard for windows is WER band B or better, or 1.4 W/M sq K

The minimum for external doors greater than 60% glazed is 1.4 W/M sq K

THE PROJECT IS WITHIN A CONSERVATION AREA

DRAWING TO BE READ IN CONJUNCTION WITH WINDOW SCHEDULE ON DRAWING 121108_L(00)102. REFER TO SCHEDULE FOR DETAILS OF WHICH WINDOWS HAVE SOLAR CONTROL GLAZING.

DRAFT ONLY. DESIGN SUBJECT TO PLANNING & BUILDING REGULATION APPROVAL - NOT FOR CONSTRUCTION

Revision	Description	By	Date
P	Initial draft for comment	SDW	18/01/24
P1	Revised following client and window maker feedback	SDW	30/01/24

Revision	Description	By	Date

Revision	Description	By	Date