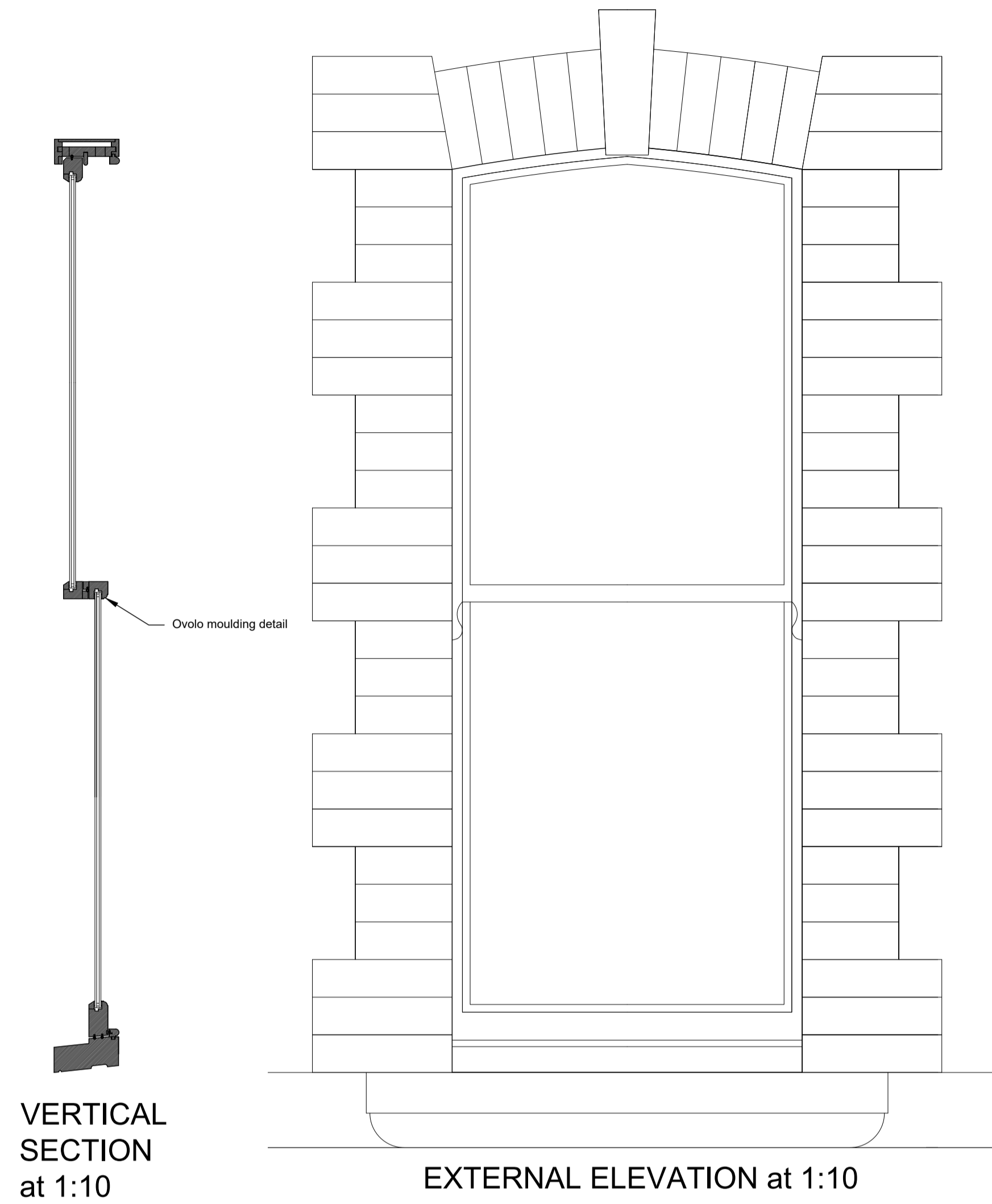
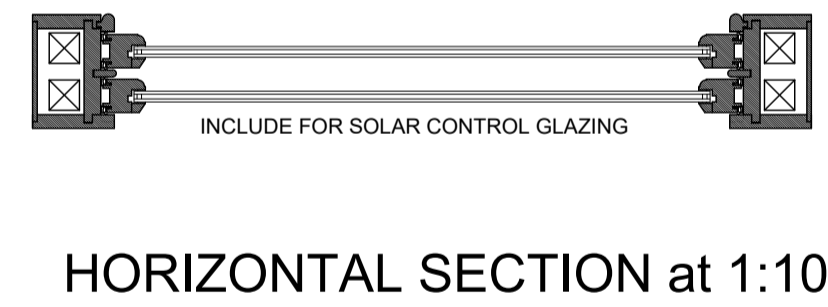
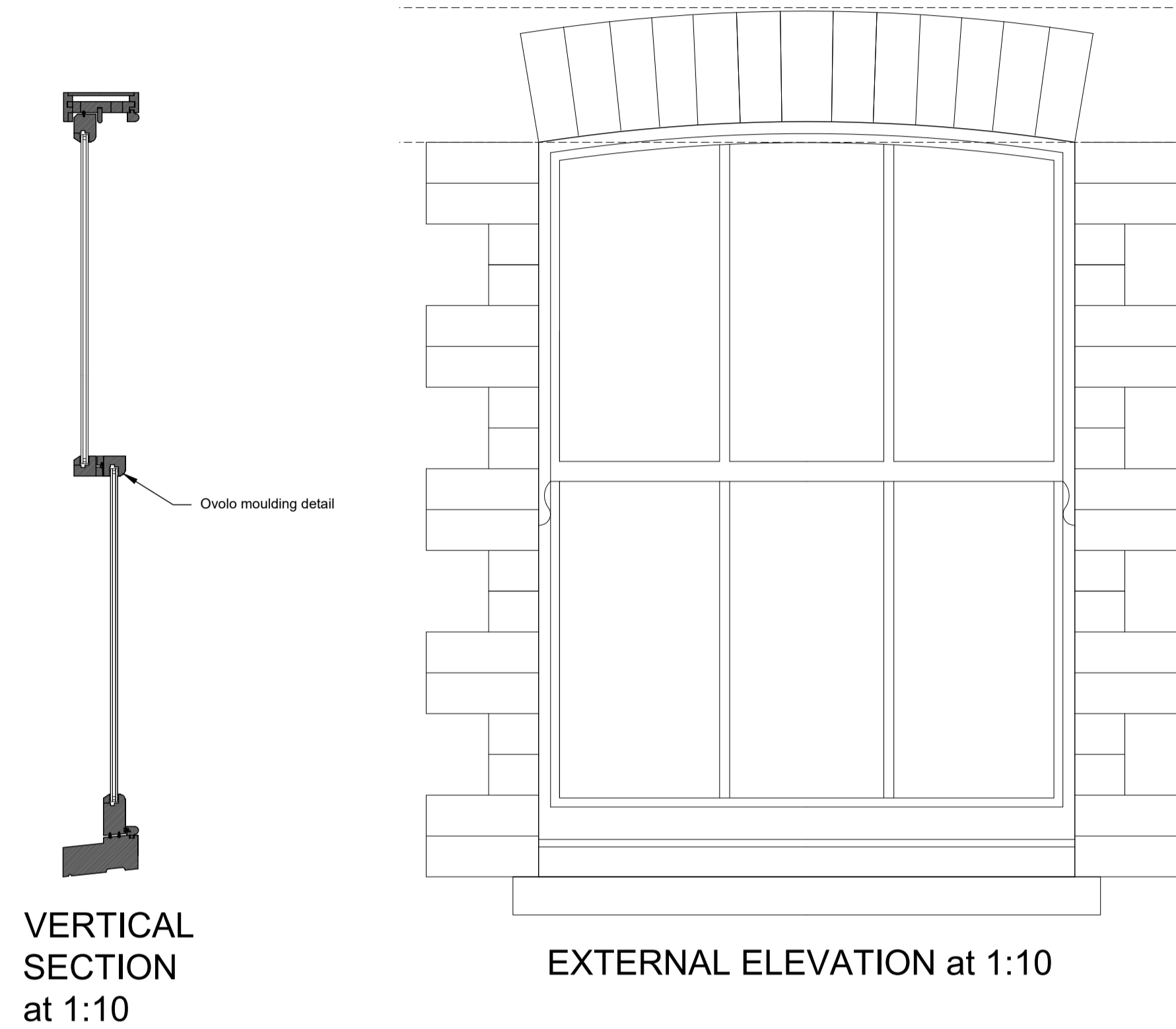


TYPE 'C' WINDOW (e.g. W19) - CONSERVATION SLIMLINE SMALL TIMBER SLIDING BOX SASH



NOTE: BUILDING CONTROL TO CONFIRM IF VENT LOCKS ARE ACCEPTABLE INSTEAD OF TRICKLE VENTS

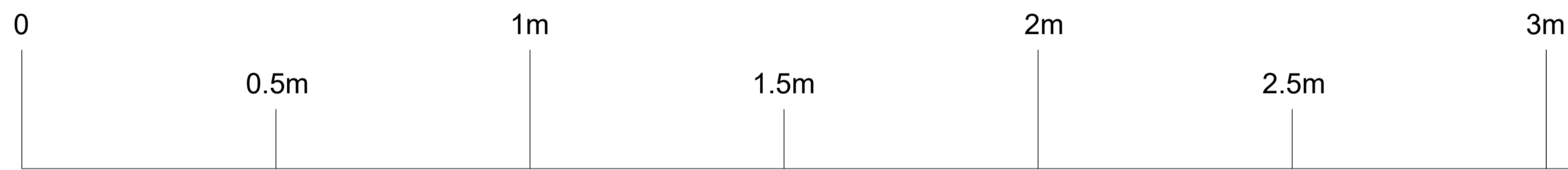
TYPE 'D' WINDOW (e.g. W2) - CONSERVATION SLIMLINE 3 PANE WIDE TIMBER SLIDING BOX SASH



HORIZONTAL SECTION at 1:10



HORIZONTAL SECTION at 1:10



SCALE at 1:10

NOTES

- All dimensions to be checked on site prior to manufacture.
- Windows to bedrooms to comply with escape requirements - 0.33 sq m clear openable area, 450mm minimum width and height, clear opening to be no more than 1.1m above finished floor level.
- Include for trickle vents or vent locks to provide background ventilation.
- The minimum U-value standard for windows is WER band B or better, or 1.4 W/M sq K
- The minimum for external doors greater than 60% glazed is 1.4 W/M sq K

THE PROJECT IS WITHIN A CONSERVATION AREA

DRAWING TO BE READ IN CONJUNCTION WITH WINDOW SCHEDULE ON DRAWING 121108_L(00)102. REFER TO SCHEDULE FOR DETAILS OF WHICH WINDOWS HAVE SOLAR CONTROL GLAZING.

DRAFT ONLY. DESIGN SUBJECT TO PLANNING & BUILDING REGULATION APPROVAL - NOT FOR CONSTRUCTION

Revision	Description	By	Date
P	Initial draft for comment	SDW	18/01/24
P1	Revised following client and window maker feedback	SDW	30/01/24

Revision	Description	By	Date

Revision	Description	By	Date

Project	The Cedars, Llandaff Rd / Romilly Cres, Cardiff			Drawn	SDW
Description	Details - Timber Windows (continued)			Date	28/04/21
Job Number	121108	Drawing Number	L(00) 112	Scale at A1	1:10
Revision	P	P1		Status	TECH DRAFT