

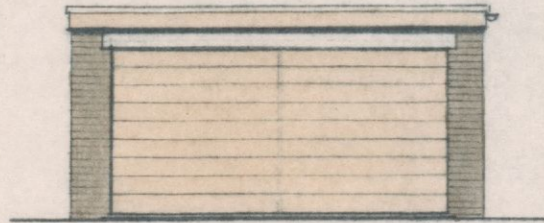
OUNLE AND THRAPSTON RURAL DISTRICT COUNCIL.
 PLAN No.
 OTR / 64 / 101

L. B. Co. asple light
facings to match dwellng.

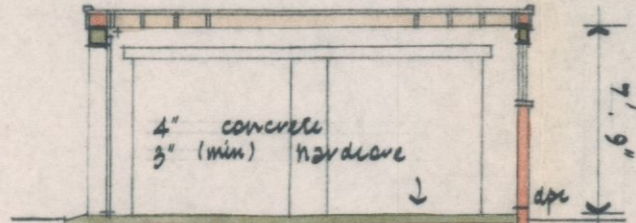
Westland 'Garador' double
 up/over door
 14' 0" x 7' 0"

1/2" mineral chippings (60/70 grds sup. per ton) on 3 layer b.u. felt type 1C, 1" boards, 2" x 8" joists at 16" c/c's fixed to fall.

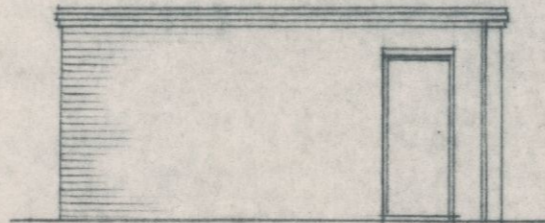
1/2" fibreboard ceiling.



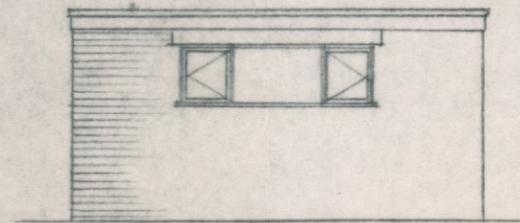
FRONT



SECTION



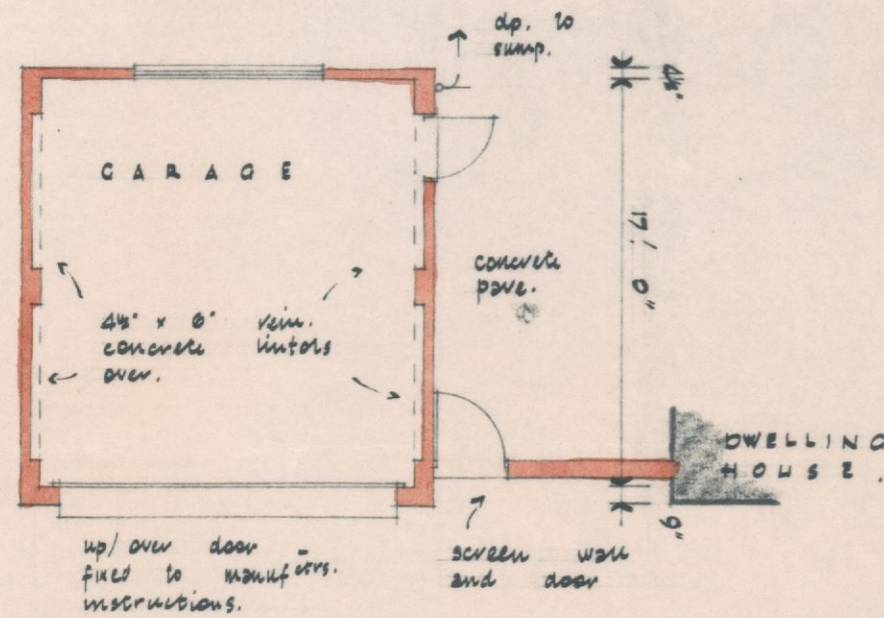
SIDE



REAR

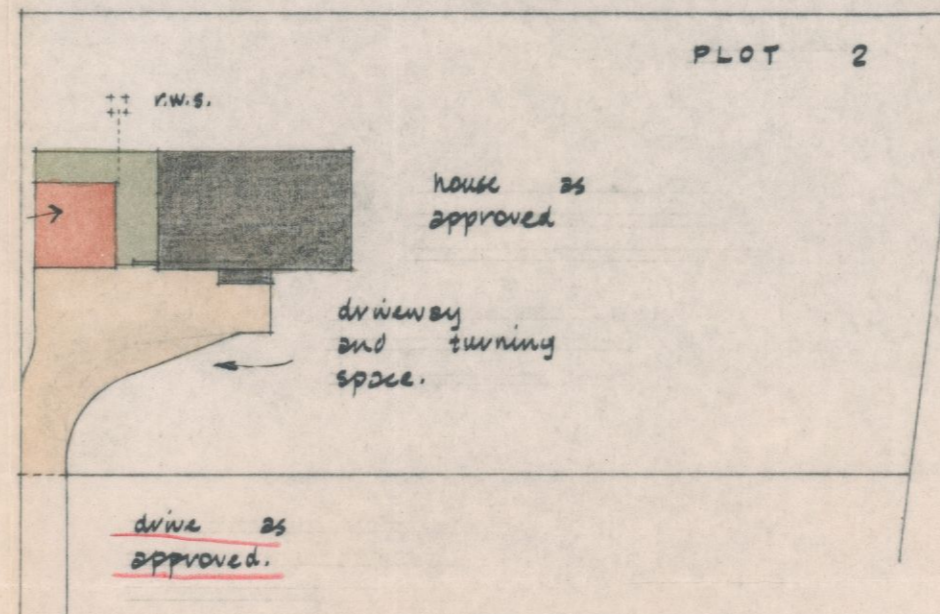
4" concrete
 3" (min) hardcore
 1.6" x 9" (1.25 : 6) concrete foundation.

4 1/2" 10' 3" 4 1/2"

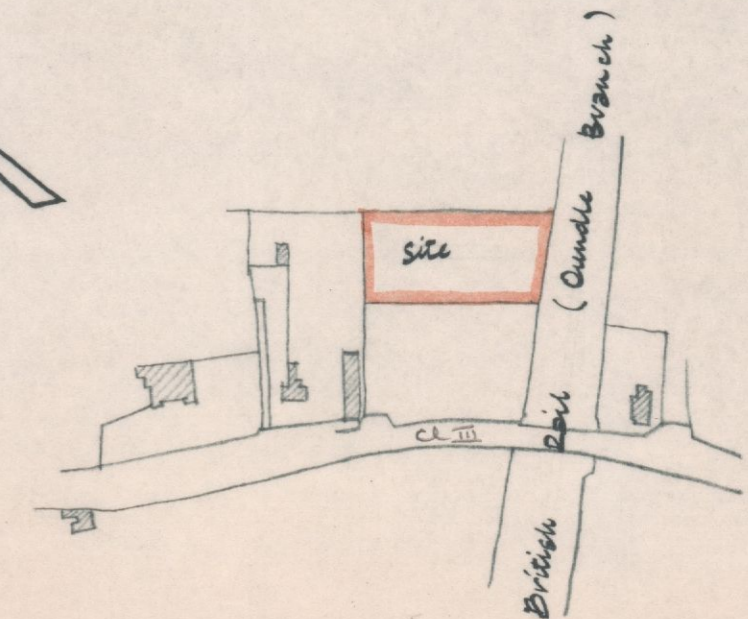


GROUND PLAN

SCALE 1" = 8' 0"



BLOCK PLAN
 SCALE 1/500th

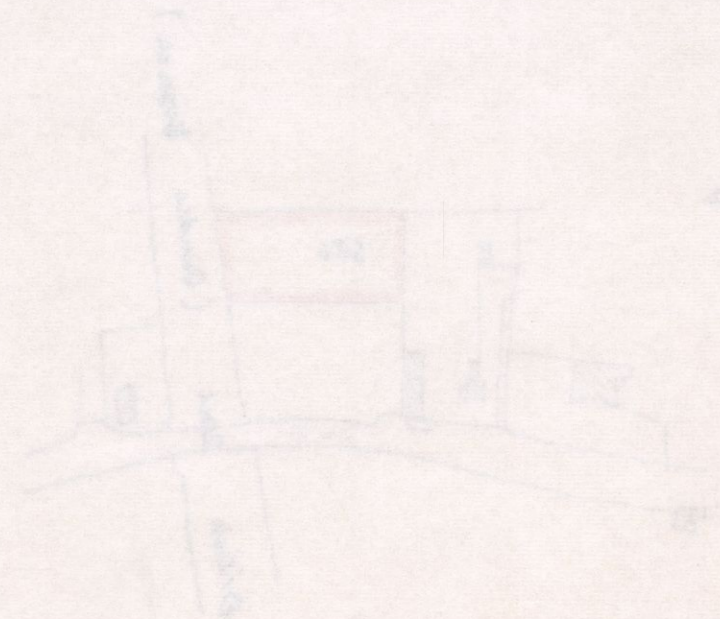
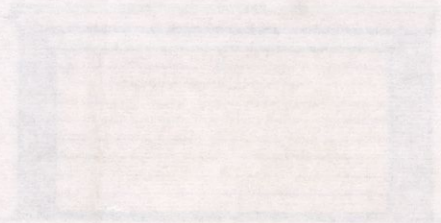
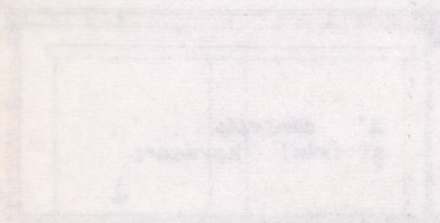


LOCATION
 SCALE 1/2500th

PROPOSED DETACHED GARAGE PLOT 2 TANSOR
 for MESSRS. CHARFORD PROPERTIES LIMITED

DRG 3076 / 5
 31st May 1967
 HENRY SPENCER & PARTNERS
 F. E. WILLET, A.R.I.B.A.
 Chartered Architects,
 40, Park Road, Peterborough.

101 / 101



15 JUN 1967
COUNTY PLANNING DEPARTMENT
REF:

DATE: 6/15/67
BY: [illegible]
PROJECT: [illegible]

SCALE: 1" = 10'-0"

PROJECT: [illegible]
DRAWING: [illegible]

[The page contains extremely faint and illegible text, likely bleed-through from the reverse side of the document. No specific content can be transcribed.]