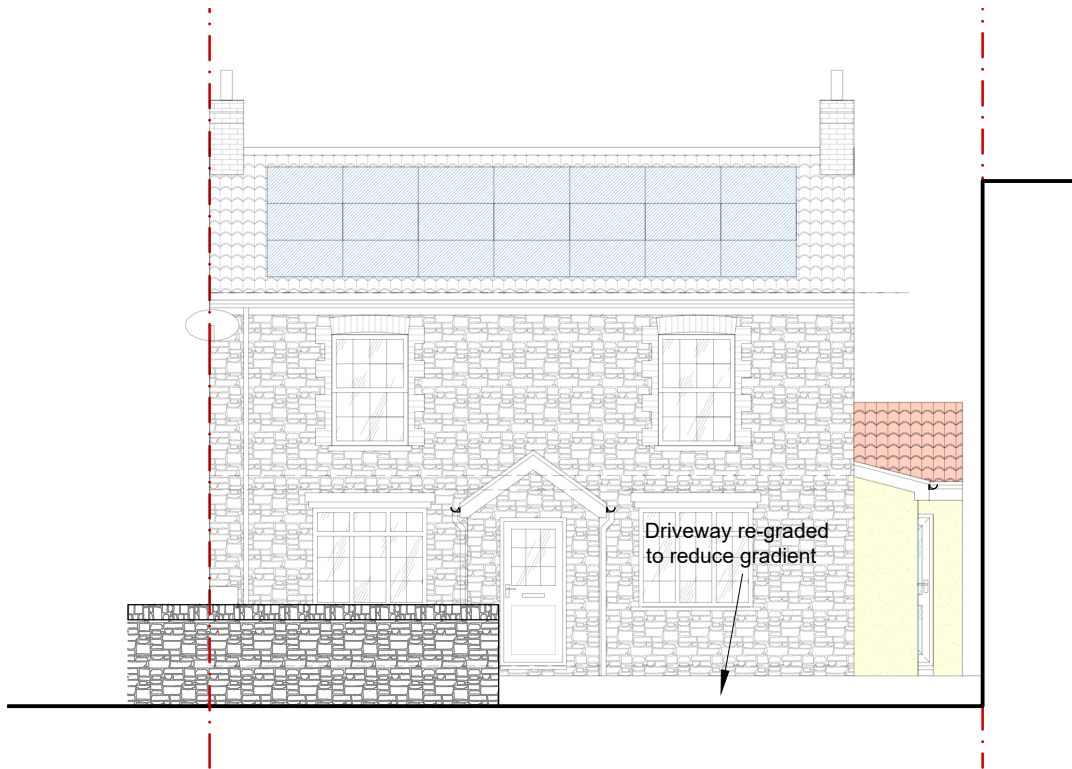


PROPOSED FRONT ENTRANCE PLAN



PROPOSED FRONT (SOUTH) ENTRANCE ELEVATION



REV B 23/11/2023: Revised to suit Clients comments.	MS
REV A 24/07/2023: Revised to suit Clients comments.	MS

JLS Design Services



23 High Street, Yatton
North Somerset
BS49 4JD

T. 01934 838 152
E. Office@jlsdesignservices.co.uk
W. www.jlsdesignservices.co.uk

JOB No. JLS/2022/0081	DRAWN MS	DATE 26/05/2022	REV B
NOTES			
General Notes This drawing and design is copyright to JLS Design Services and remains the property of JLS Design Services, and as such the contents must not be disclosed to anyone or reproduced in any way without prior consent from JLS Design Services.			

PROJECT SINGLE STOREY REAR AND SIDE EXTENSIONS AND INTERIOR ALTERATIONS		
ADDRESS 12 CHURCH ROAD, YATTON BS49 4HH		
DRAWING TITLE PROPOSED FRONT ENTRANCE PLAN & ELEVATION		
SCALE AS SHOWN	SIZE A3 SHEET	DRAWING NUMBER JLS-10