

PART ELEVATION

TIMBER FINIAL
BY SPECIALIST SUPPLIER
PAINTED WHITE WITH
OIL BASED PAINT

18MM WSP PLYWOOD
FASCIA WITH PLANT ON BEAMS
PAINTED WHITE WITH
OIL BASED PAINT

215mm RED BRICKWORK WITH WHITE MORTAR
JOINTS (INSET 4MM)

BRICKWORK ARCH FORMED
USING MAIN BRICK . SUPPORTS
215MM BRICKWORK ABOVE

102.5MM BRICKWORK AS ABOVE

CATNIC LINTEL WITH INSULATED
BASE

TIMBER CASEMENT WINDOW
DOUBLED GLAZED
U VALUE 1.4 W/M2.K

WHITE PAINTED CONCRETE CILL WITH DRIP

BRICKWORK ARCH FORMED
USING MAIN BRICK . SUPPORTS
215MM BRICKWORK ABOVE

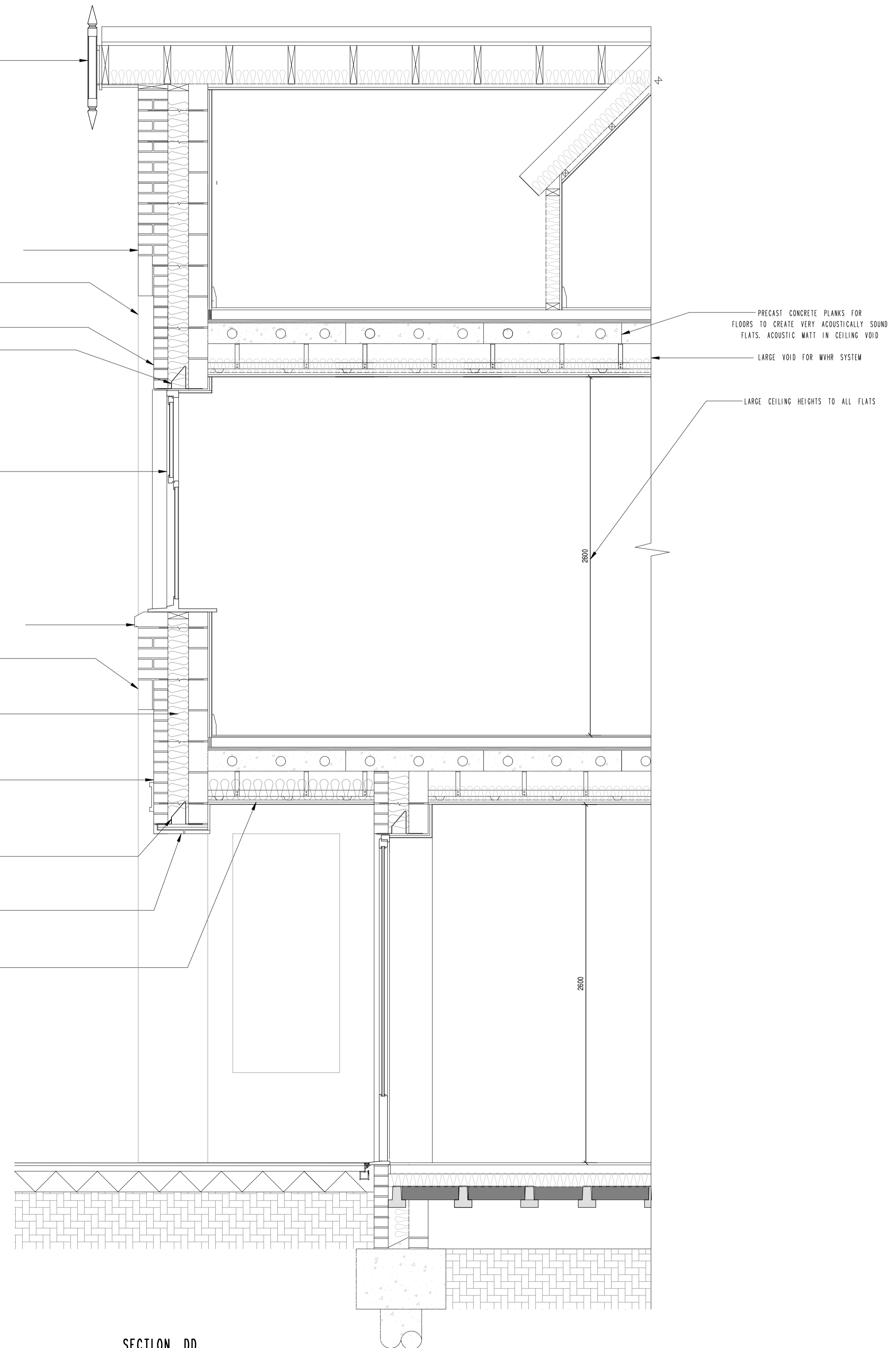
THICK EXTERNAL WALLS WITH FULL
FILL 150MM CAVITY INSULATION
FOR THERMALS AND FIRE REGULATIONS
U VALUE 0.18 W/M2.K

102.5MM BRICKWORK AS ABOVE

CATNIC LINTEL WITH INSULATED
BASE

BRICK SLIPS ADHERED TO
CEMENT BOARD TO CREATE BRICK
SOFFIT

WHITE RENDERED SOFFIT



SECTION DD

PLANNING



LOCATION OF PART ELEVATION

No.	Date	By	Contents
Revisions			

Site Address
**23 CRESCENT EAST
HADLEY WOOD
EN40EY**

Job Title
**DEMOLITION OF EXG
HOUSE AND
ERECTION OF 7 FLATS**

Drawing Title
EXAMPLE DETAIL

Scale 1:20 @ a1 Date 07.23 Drawn by sjl

Alan Cox
associates
Architectural & Planning Consultants
TEL: 020 - 8440 - 7777
FAX: 020 - 8364 - 9556

Dwg.No. 521022-32 Rev.