

**NOTES**

**Border Preparation**

1. New borders will be filled with grade A topsoil.
2. Existing borders will be improved by adding well-rotted compost and a general purpose fertiliser.

**Planting**

1. Plants will be sourced from a reputable nursery
2. Plants will be planted with additional compost and fertiliser.
3. Borders will be dressed with a mulch of finely shredded bark to a depth of not less than 50mm.
4. Carpinus hedging will be planted at 500mm centres in a double, staggered row 450mm apart.

**3 Year Maintenance Plan**

1. Borders will be kept well-watered until plants are established.
2. Borders will be kept weed free.
3. Shrubs will be pruned annually to maintain size and shape. Plants will be reduced when necessary to prevent crowding. Any dead or dying growth will be removed during pruning.
4. Hedges will be cut twice a year to maintain size, shape and plant health. Any dead or dying growth will be removed during the hedge cutting.
5. Mulch will be topped up annually and kept to a depth of no less than 50mm.
6. Any plants that die will be replaced with plants of the same type and size.

**PLANT LIST**

**NAME**

**Hedging**

See notes on main drawing

**Shrubs**

Hebe 'Mrs Winder' 8

**Herbaceous**

Geranium 'Rozanne' 6

**Grasses**

Pennisetum villosum 8

**HARD LANDSCAPING MATERIALS**

**Paving for terraces & steps**

Blue-grey Limestone slabs

**Paving for driveway and parking areas**

10mm shingle laid into plastic stabilisation grids.

**Edgings for lawn, gravel and paving**

100 x 100 x 200 black granite setts.

NB: All measurements must be checked on site and not scaled from this drawing. Any discrepancies to be reported immediately to the designer

Linsey Evans Garden Design  
9 Dundas Close  
BRACKNELL  
Berks RG12 7BX  
01344 442944/07901 852731

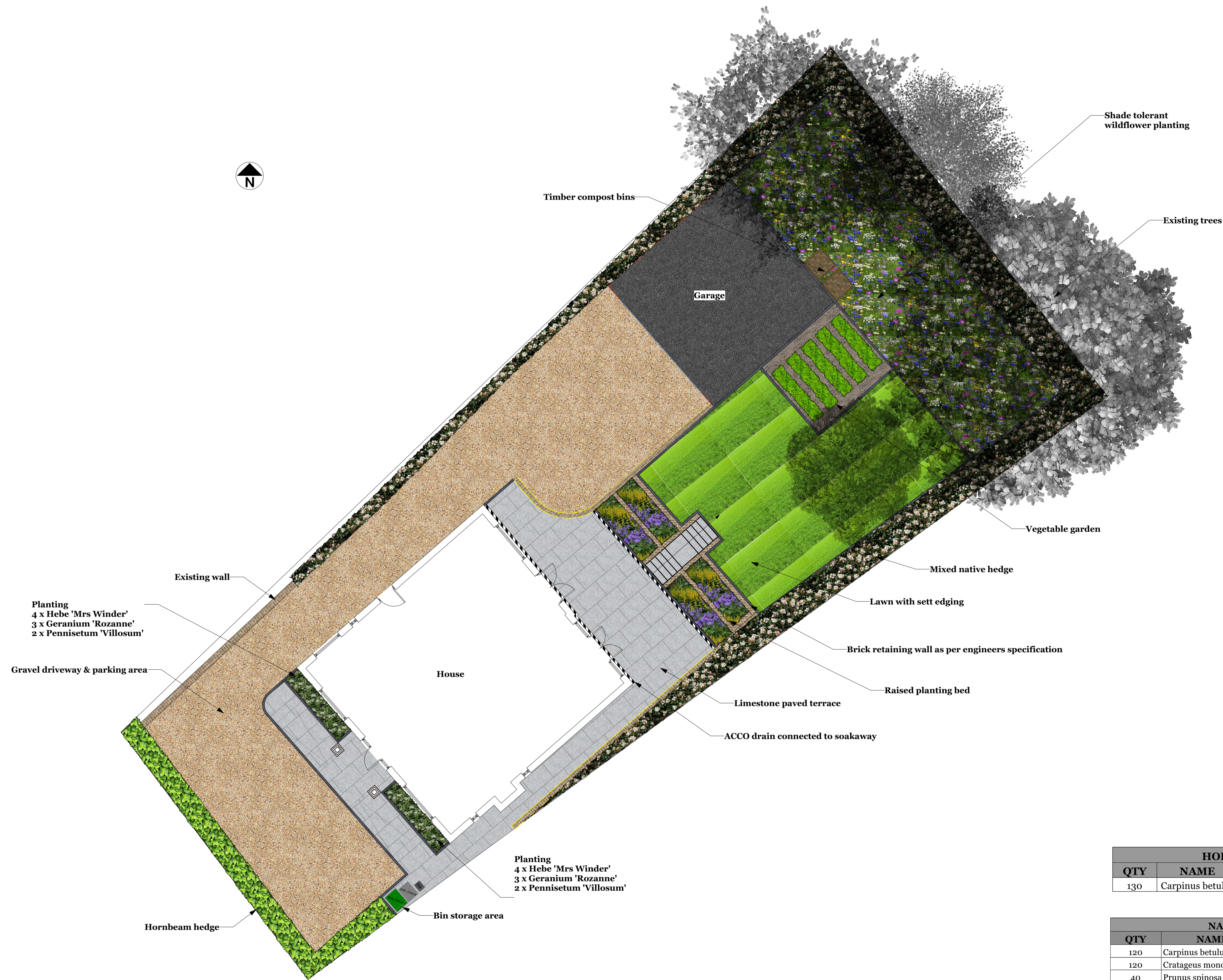
Title: Landscape Plan - Revision 1  
36A Vann Road  
Fenhurst  
West Sussex  
GU27 3JN

Date: 18 January 2023

Scale: 1:100 @ A1

Drwg No: 223.23.01.r1

Designer: Linsey Evans



Planting  
4 x Hebe 'Mrs Winder'  
3 x Geranium 'Rozanne'  
2 x Pennisetum 'Villosum'

Planting  
4 x Hebe 'Mrs Winder'  
3 x Geranium 'Rozanne'  
2 x Pennisetum 'Villosum'

HORNBEAM HEDGE			
QTY	NAME	SIZE	NOTES
130	Carpinus betulus	1.5m – 1.8m	Bare-root whips

NATIVE HEDGE MIX			
QTY	NAME	SIZE	NOTES
120	Carpinus betulus	1.5m – 1.8m	Bare root whips
120	Crataegus monogyna	1.5m – 1.8m	Bare root whips
40	Prunus spinosa	1.5m – 1.8m	Bare root whips
40	Acer campestre	1.5m – 1.8m	Bare root whips

Hedging whips will be planted in double, staggered rows 450mm apart. Whips will be planted at 500mm centres.