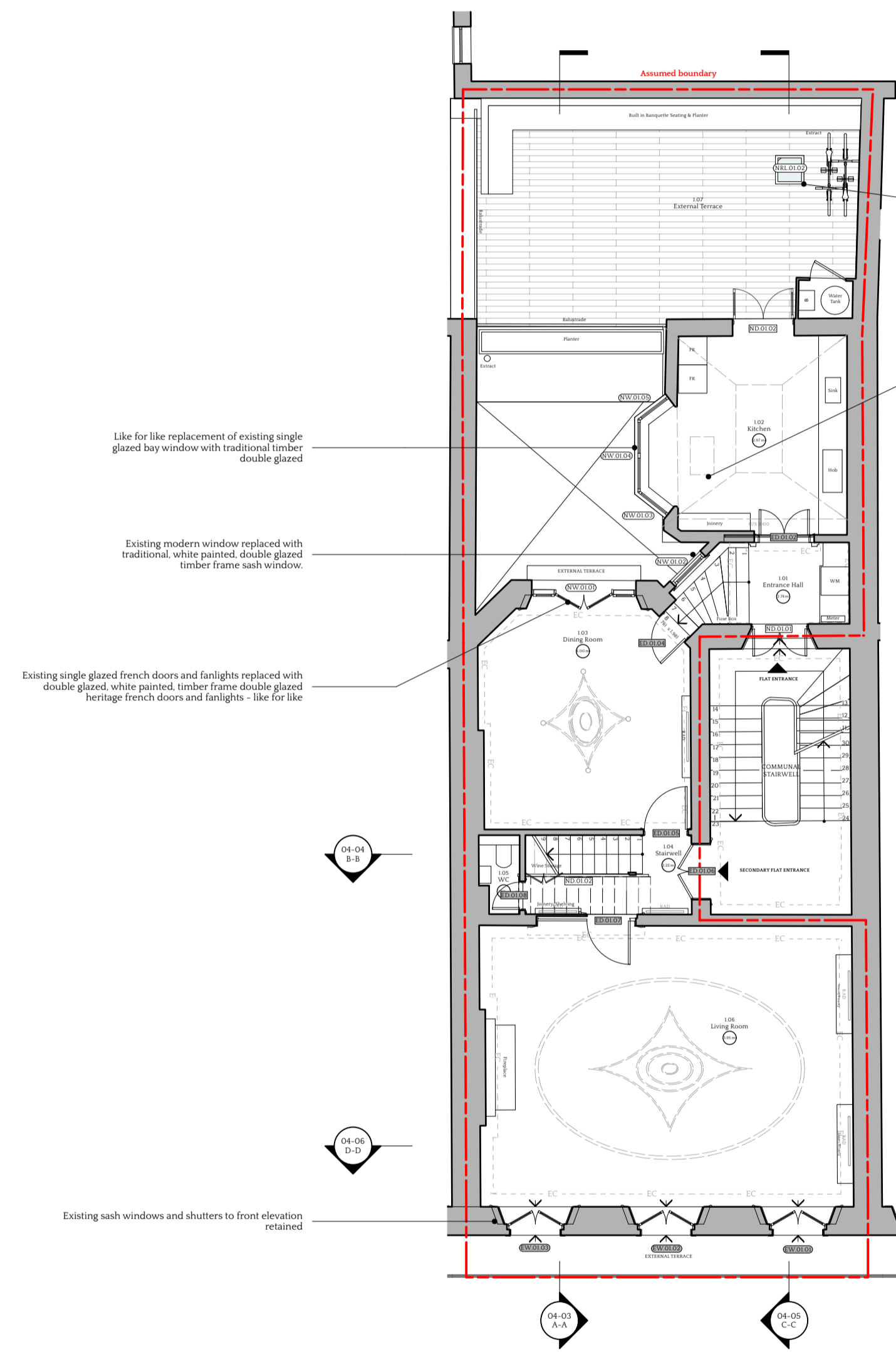
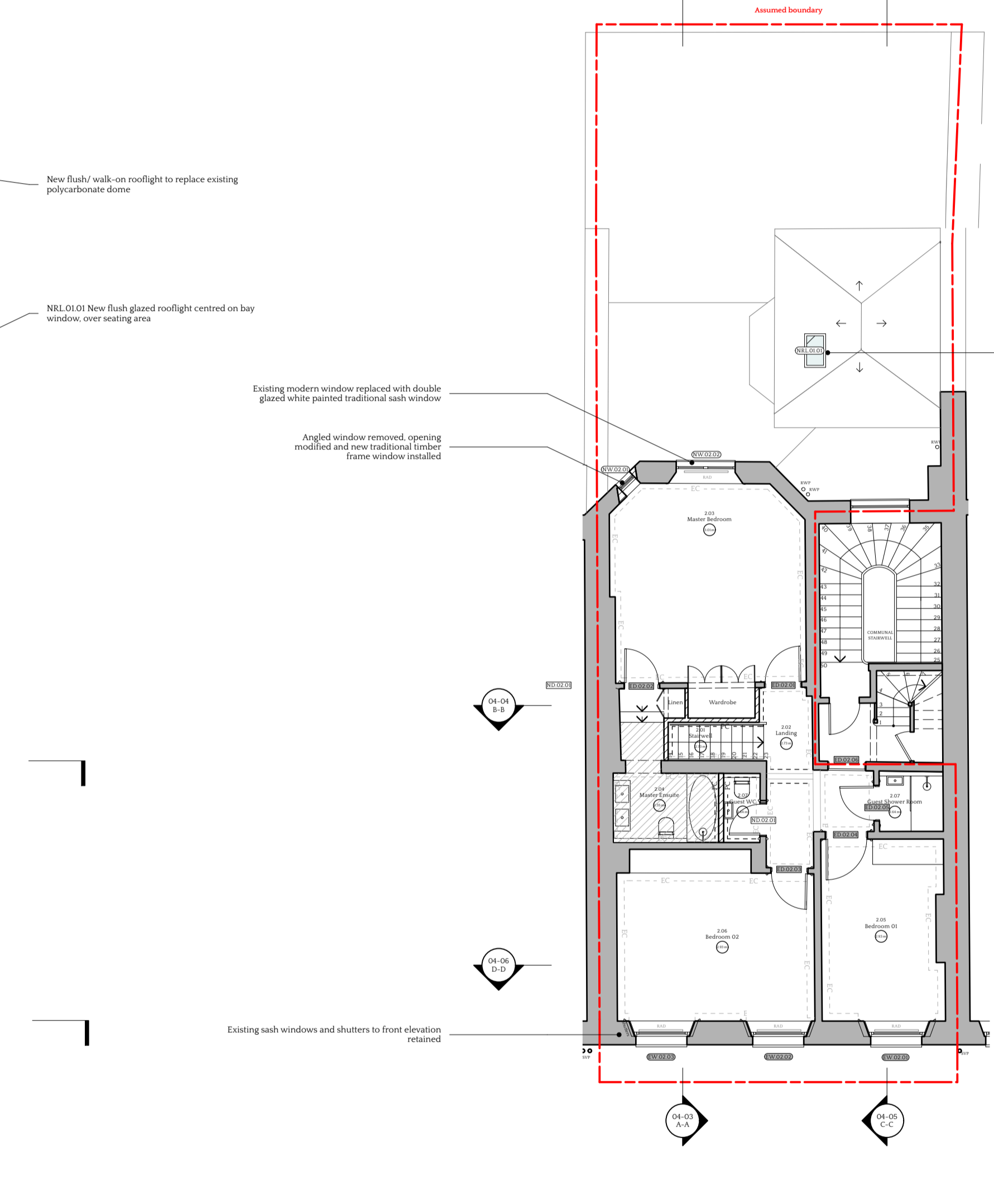


	<p>Window type: new timber sash window (bottom sash fixed) Glazing: 12 mm slimline glazed units Finish: White paint RAL 9016 Walls: existing masonry External surround: existing concrete reveals</p>
	<p>Window type: new timber casement windows Glazing: 12 mm slimline glazed units Finish: White paint RAL 9016 Walls: existing masonry External surround: existing concrete reveals</p>
	<p>Window type: new timber outward opening doors Glazing: 12 mm slimline glazed units Finish: White paint RAL 9016 Walls: existing masonry External surround: existing concrete reveals</p>
	<p>Window type: new timber casement windows and doors Glazing: 12 mm slimline glazed units Finish: White paint RAL 9016 Walls: existing masonry External surround: existing concrete reveals</p>
	<p>Window type: new timber sash window Glazing: 12 mm slimline glazed units Finish: White paint RAL 9016 Walls: existing masonry External surround: existing concrete reveals</p>
	<p>Window type: new timber casement windows Glazing: 12 mm slimline glazed units Finish: White paint RAL 9016 Walls: existing masonry External surround: existing concrete reveals</p>



1 Approved First Floor Plan - (23/07970/FULL & 23/07971/LBC)
Scale: 1:100



2 Approved Second Floor Plan - (23/07970/FULL & 23/07971/LBC)
Scale: 1:100

REV	DATE	REVISION NOTE	BY
A	05/02/2024	Issued for planning	CN

PROJECT LONDON

W WWW.PROJECTLONDON.CO.UK
E INFO@PROJECTLONDON.CO.UK P 020 3488 6982

PLANNING

ISO A1

Project Montagu
Flat 2, 48 Montagu Square, London, W1H 2LW

Window Schedule

SCALE	DATE CREATED	DRAWN	CHECKED
1:50	05/02/2024	CN	KM
PROJECT NUMBER	DRAWING NUMBER	REVISION	
2309	02-10	A	