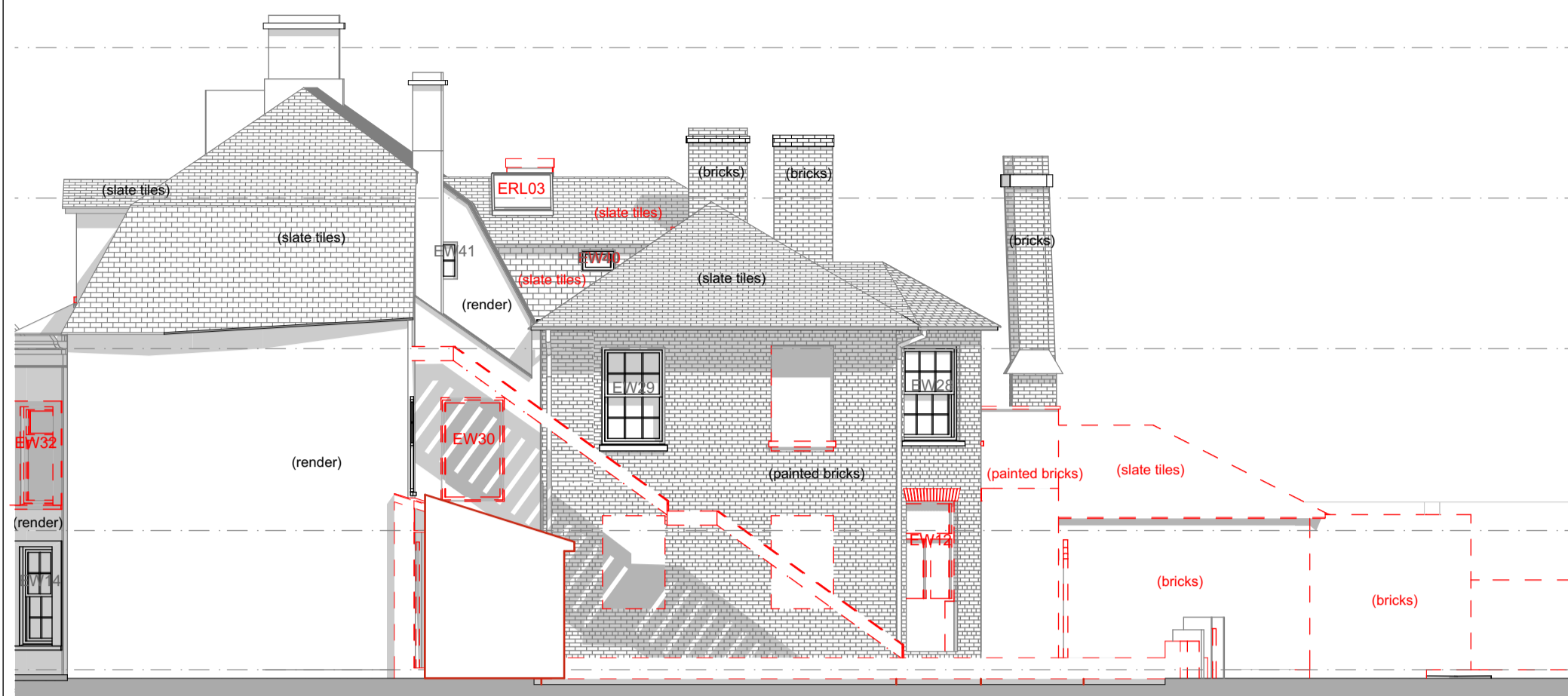
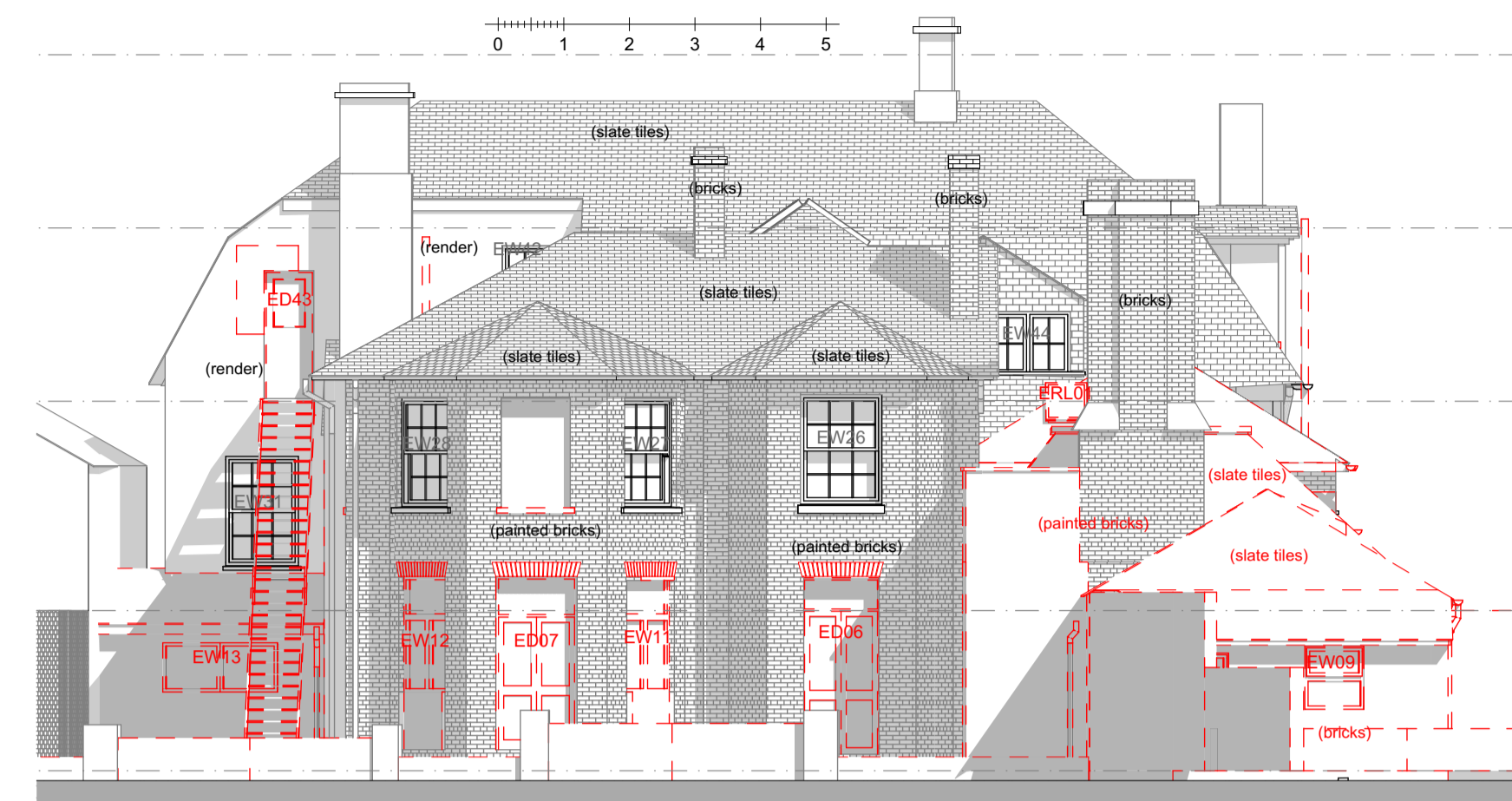


For Planning purposes only.
If in doubt ASK!

Notes



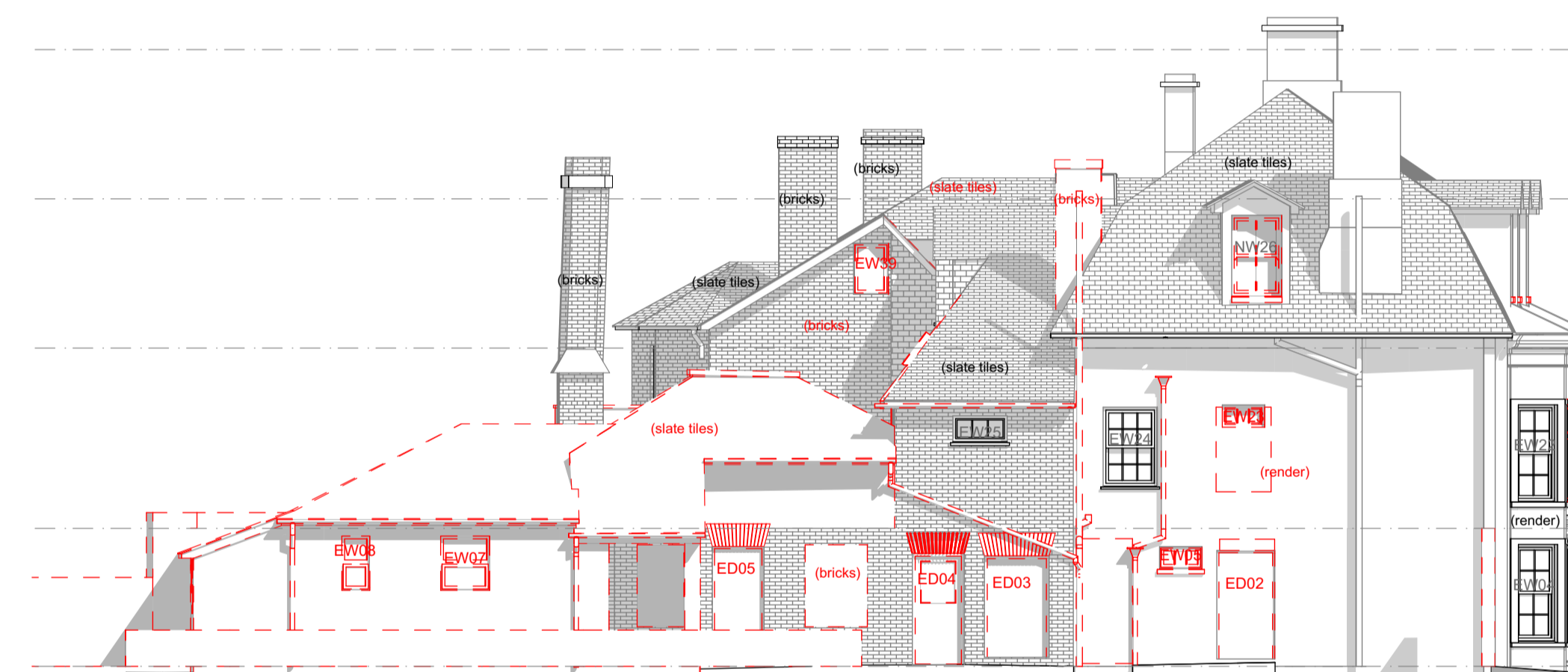
East Elevation - Removals
1:100



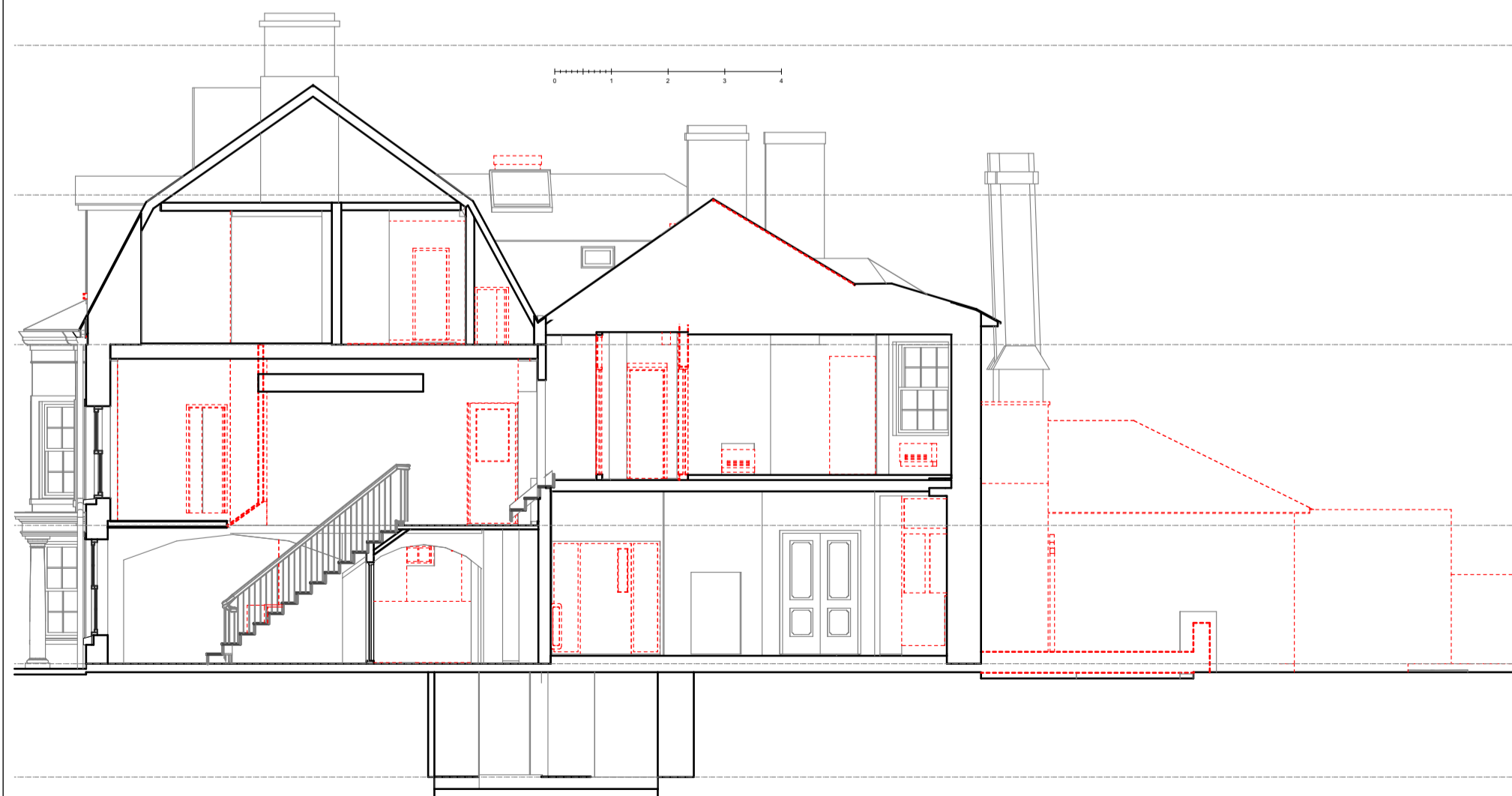
North Elevation - Removals
1:100



South Elevation - Removals
1:100



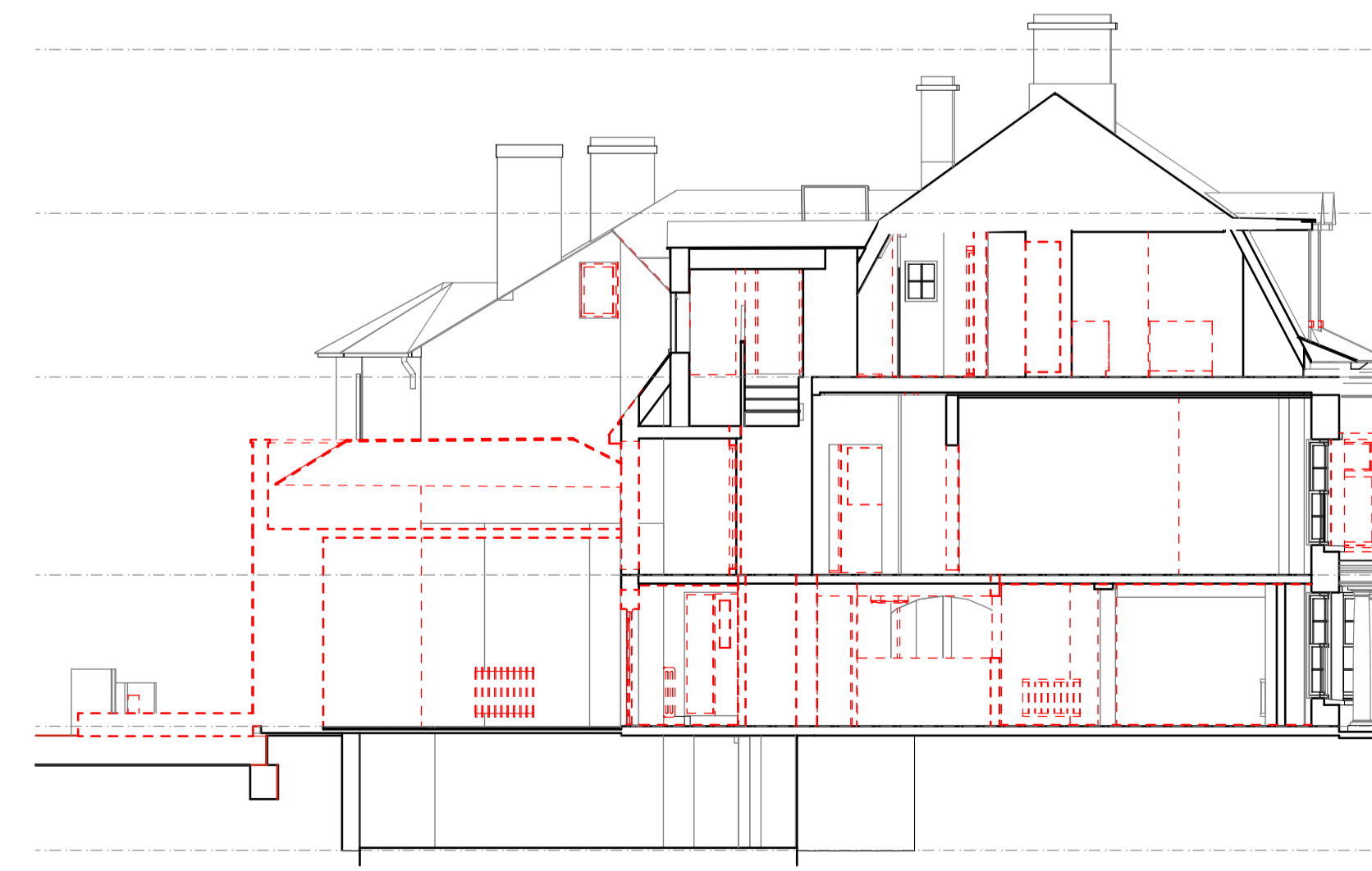
West Elevation - Removals
1:100



Section 1 - Removals
1:100



Section 2 - Removals
1:100

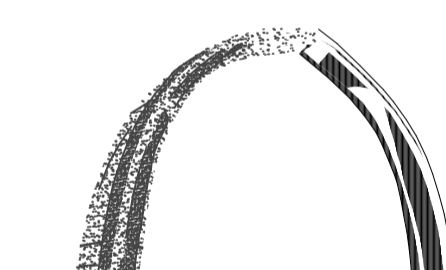


Section 3 - Removals
1:100

drawing status

DESIGN

Rev Description Date



IAN ABRAMS
ARCHITECT LIMITED
CHARTERED ARCHITECT

5 The Mallings, Station Road, Newport, Essex CB11 3RN
Telephone: 01799 543 533
e-mail: ian@ianabrams.co.uk
www.ian-abrams-architects.co.uk

Job title

**Alterations to
Royal British Legion
28 Windhill
Bishop's Stortford
CM23 2NG**

Drawing title

Removals - Elevations & Sections

Scale	Date	Drawn
AS SHOWN @A1	JAN 2024	PM
Project No	Drawing No	Rev
114920	206	b