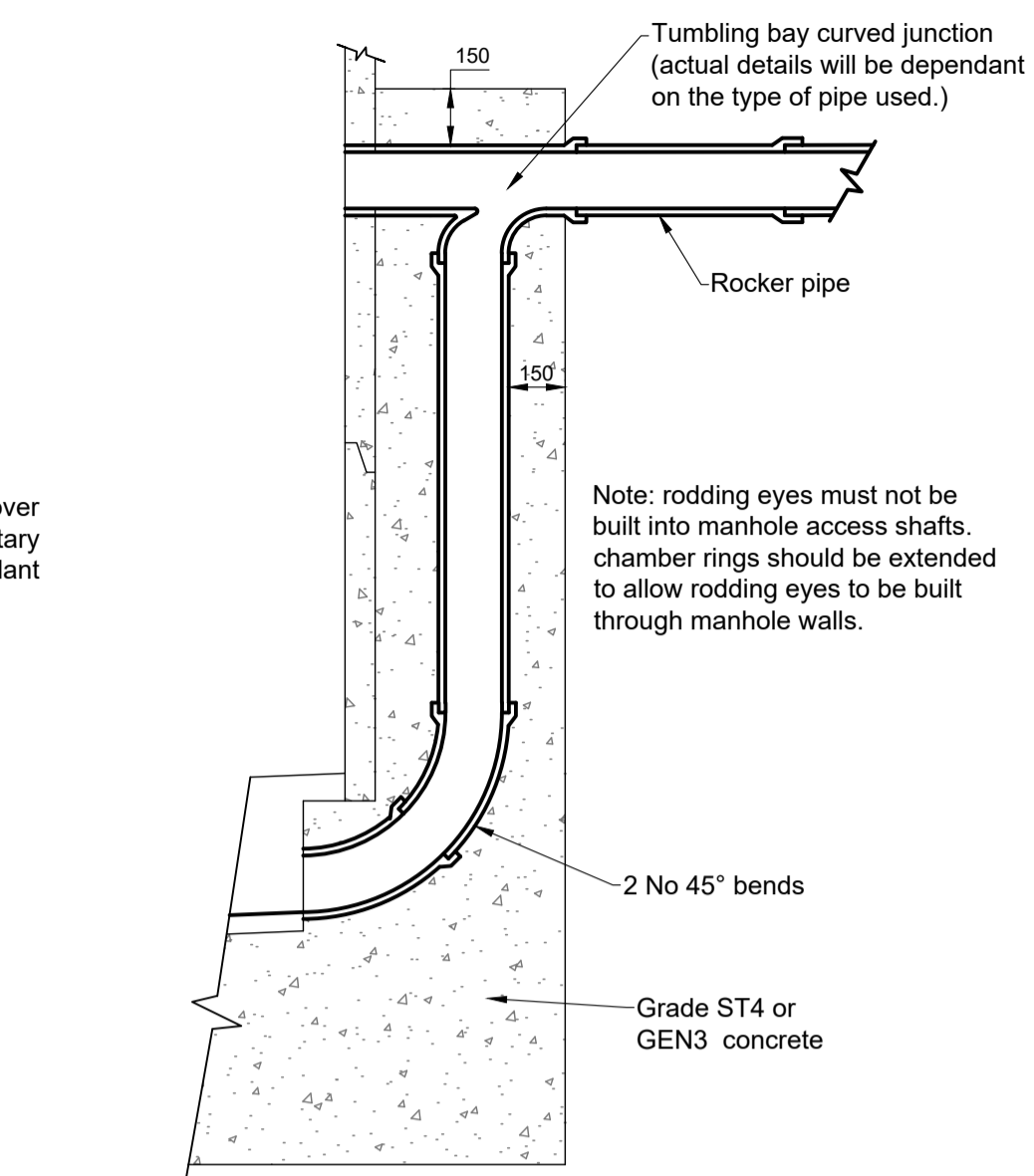
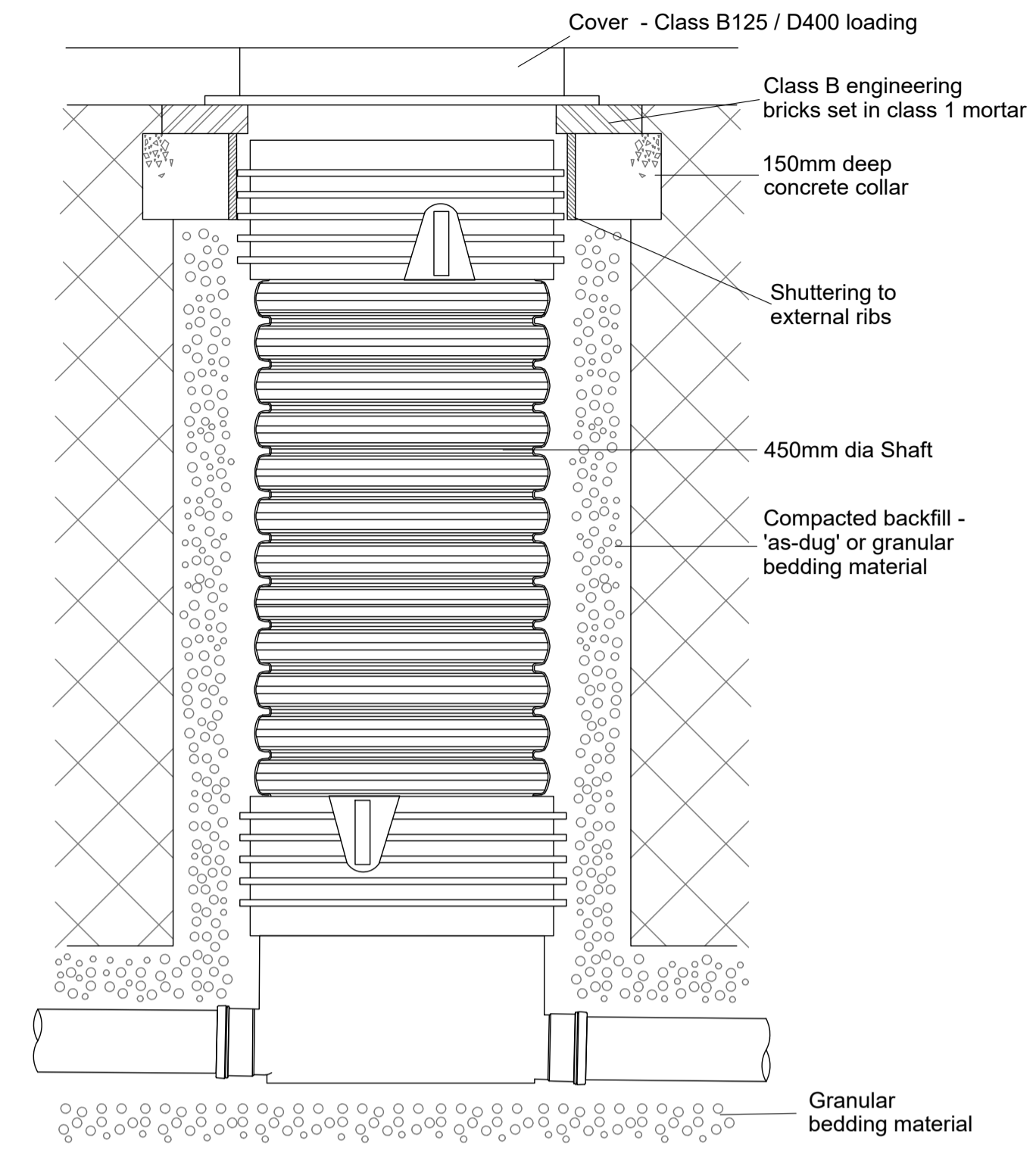


SECTION B-B
SCALE 1:20

TYPICAL MANHOLE DETAIL - TYPE B
MAX. DEPTH FROM COVER LEVEL TO SOFFIT OF PIPE 1500 - 3000



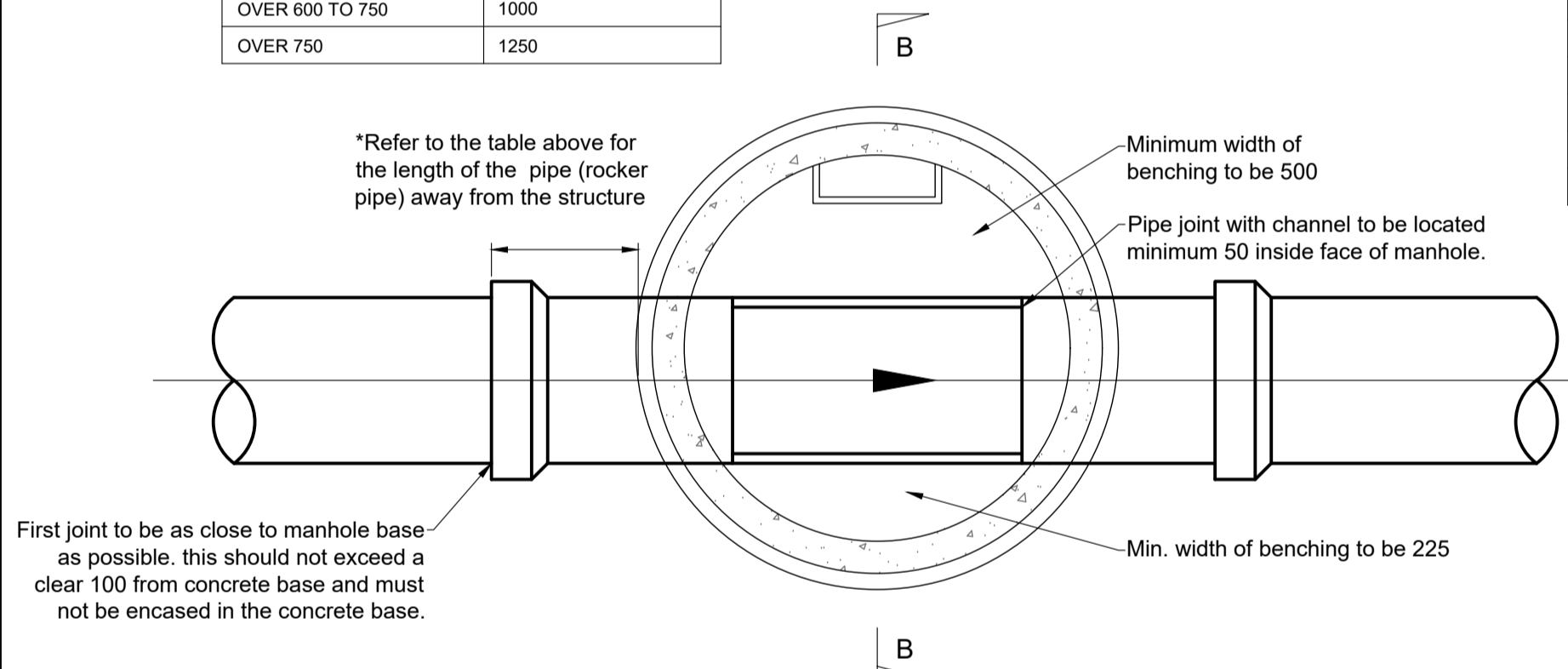
DROP PIPE DETAIL
SECTIONAL ELEVATION ON "XX"



TYPICAL 450mm DISCONNECTOR MANHOLE

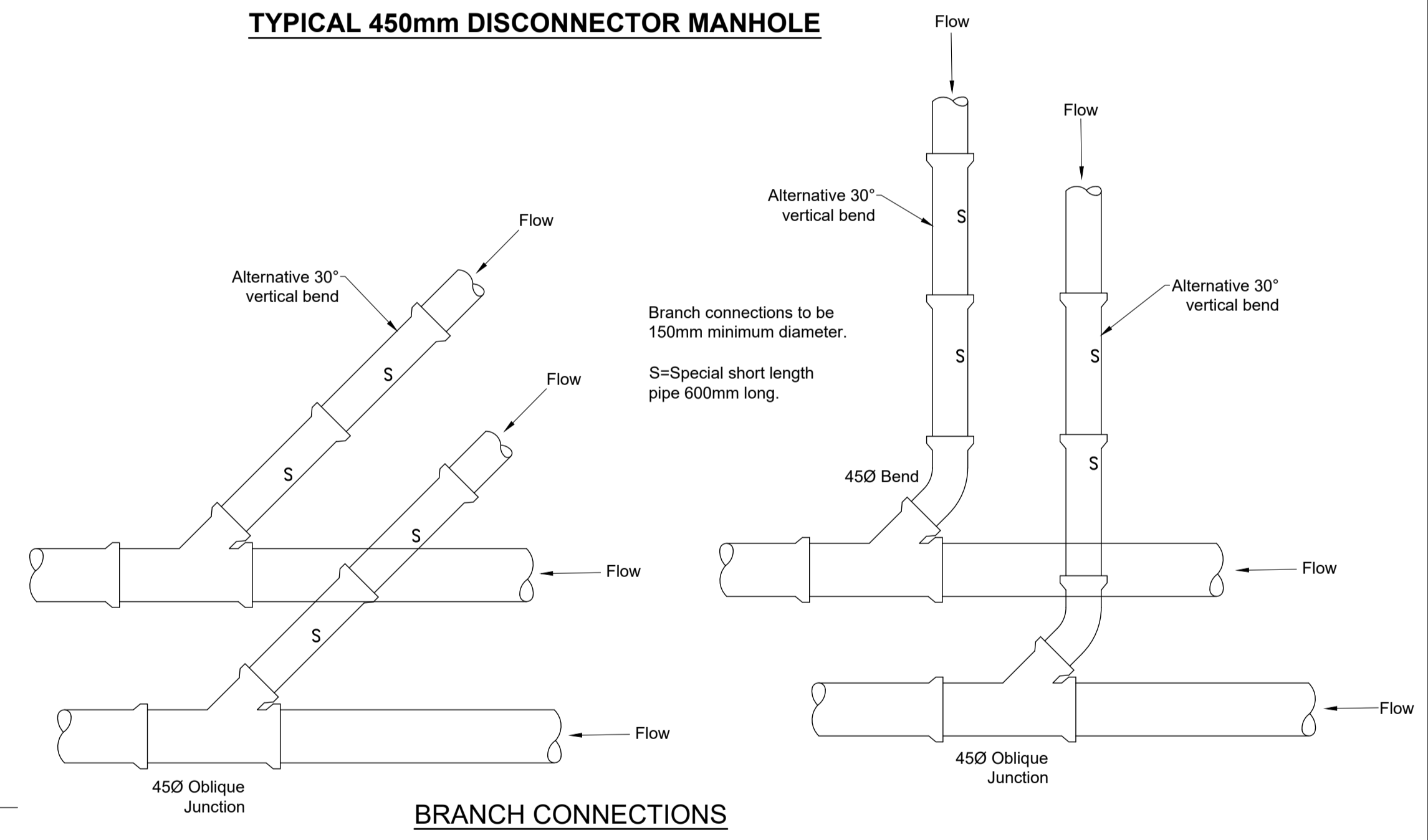
RECOMMENDED LENGTH OF ROCKER PIPES	
NOMINAL DIAMETER	EFFECTIVE LENGTH
150 TO 600	600
OVER 600 TO 750	1000
OVER 750	1250

TYPE A & TYPE B MANHOLE DIMENSIONS	
DIAMETER OF LARGEST PIPE IN MANHOLE	INTERNAL DIAMETER OF MANHOLE (mm)
LESS THAN 375	1200
375 - 450	1350
450 - 700	1500
750 - 1050	1800
1125 - 1500	2100
ABOVE 1500	TO BE ADVISED

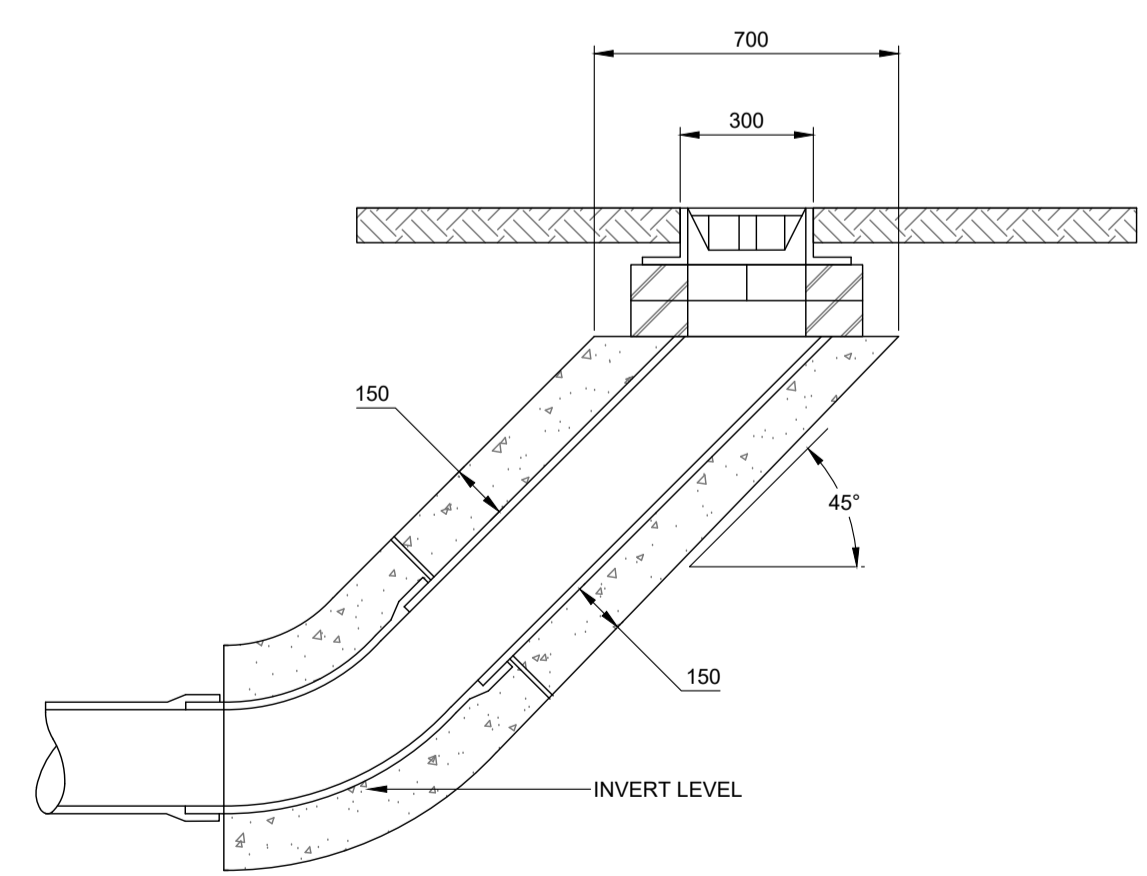


TYPICAL PLAN DETAIL FOR MANHOLE TYPE B
SCALE 1:20

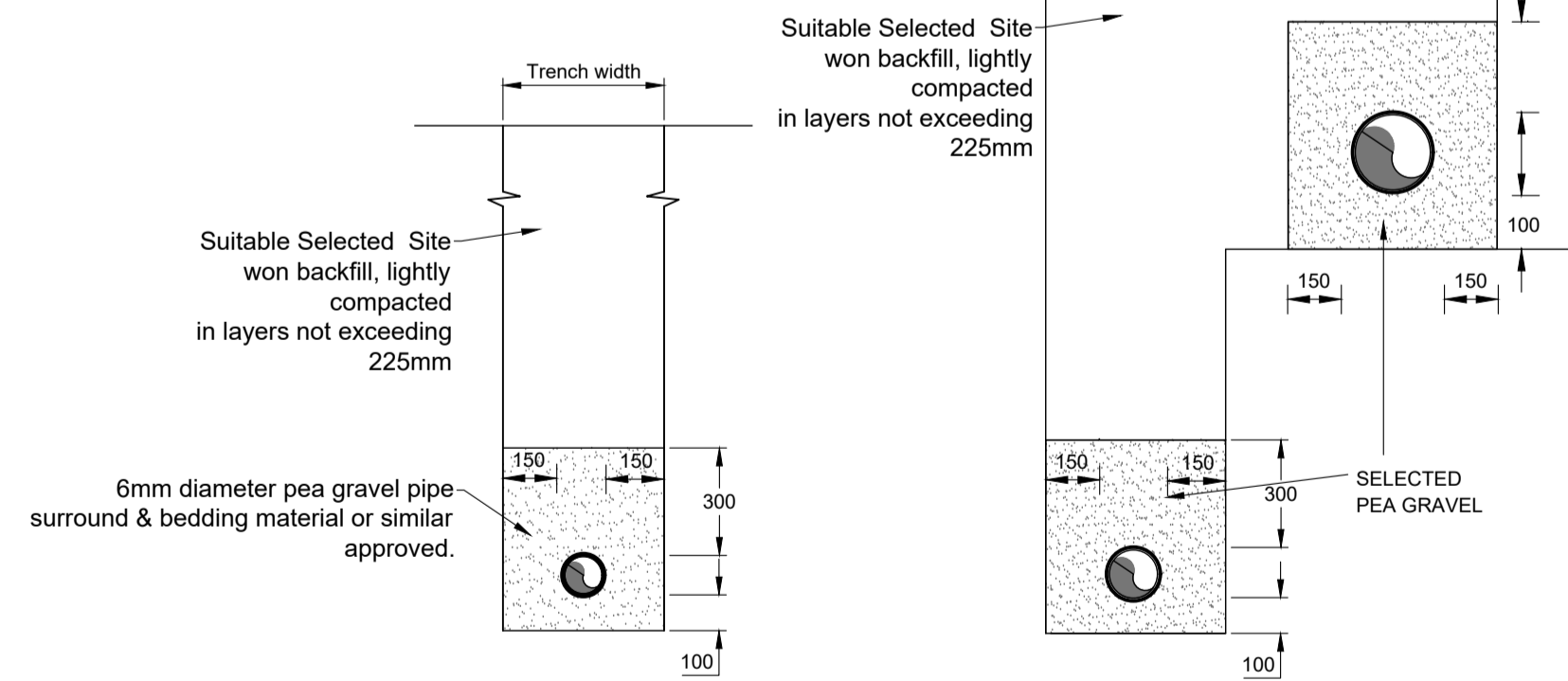
NOTE
If depth to crown of pipe is less than 1200 provide grade 20 concrete 150 bedding and surround.



BRANCH CONNECTIONS

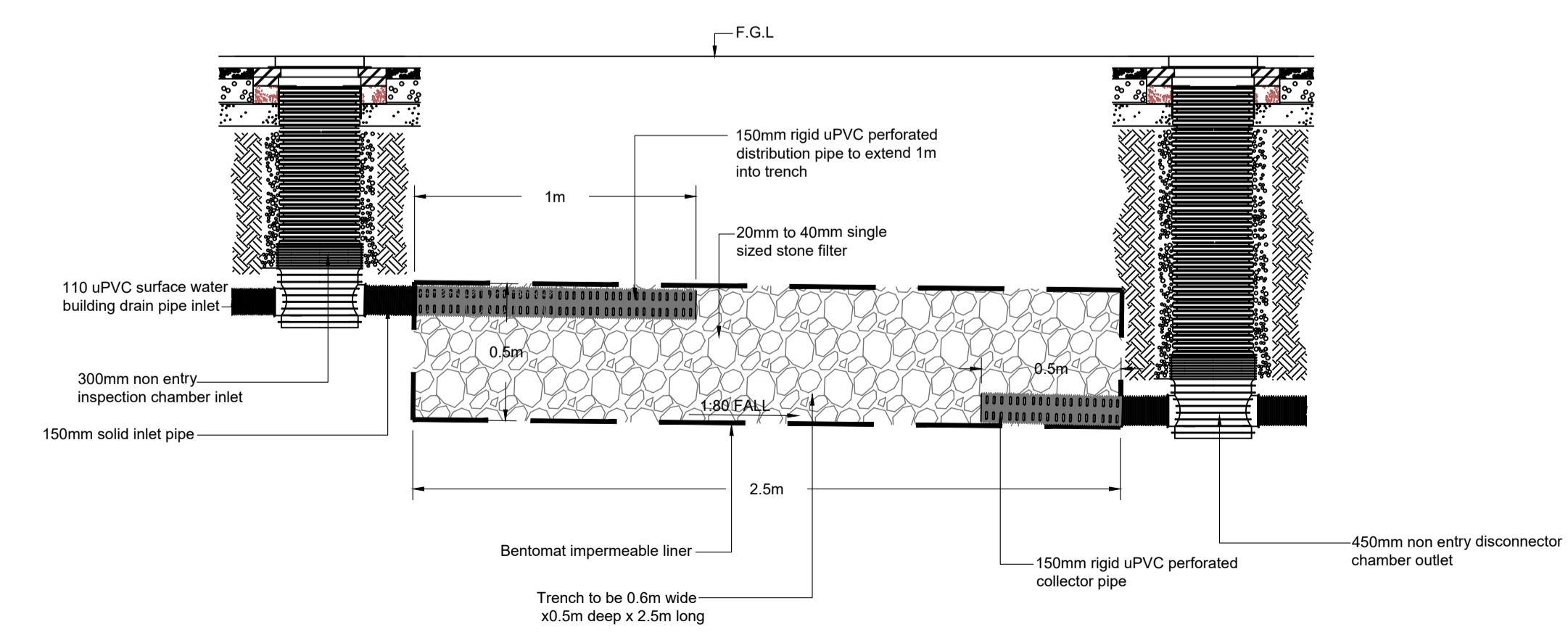


RODDING EYE
SCALE 1:20



TYPICAL SEWER TRENCH DETAIL IN NON TRAFFICKED AREAS
SCALE 1:20

Selected fill, whether selected from locally-excavated material or imported, shall consist of uniform, readily compactable material. Fill shall be free from vegetable matter, building rubbish and frozen material or materials susceptible to spontaneous combustion, and shall exclude clay of liquid limit greater than 80 and/or plastic limit greater than 55 and materials of excessively high moisture content, Clay lumps and stones retained on 75 mm and 37.5 mm sieves, respectively, shall be excluded from fill material.



TYPICAL IN-CURTLIAGE PLOT TREATMENT
(SCALE 1:20)

- NOTES:**
- DO NOT SCALE FROM THIS DRAWING
 - THE CONTRACTOR SHALL BE RESPONSIBLE FOR CHECKING AND VERIFICATION OF ALL DIMENSIONS ON SITE PRIOR TO COMMENCEMENT
 - THE CONTRACTOR SHALL CONFIRM AND BRING TO THE ATTENTION OF THE ENGINEER ANY DISCREPANCIES CONTAINED IN THIS DRAWING PRIOR TO COMMENCEMENT.

Rev	Revision Details	Drwn	Date

CLIENT:	
MR DES TRAVERS	
PROJECT:	
65 DRUMPELLIER AVENUE COATBRIDGE ML5 1JS	
TITLE:	
DRAINAGE DETAILS	
DESIGNER:	STATUS:
I.S.M	INFORMATION
DATE OF ISSUE: 23/11/23	SCALE: AS SHOWN
Drawing Number:	Revision:
231101-009	-