

# Site Photographs

Proposed Dwellinghouse and Ancillary Garage/ Workshop /Home Office

Old Smiddy, 2 Westgate, Crail

ROXBURGH | M<sup>c</sup>EWAN ARCHITECTS

February 2024





# Introduction

This Site Photograph document supports a Planning Application and a Conservation Area Consent Application for a new family home in the village of Crail in Fife.

The site is a former blacksmith workshop on the western edge of the historic village centre.

A new house is proposed on the south of the site, with an ancillary garage/workshop/home office building located perpendicular to the street.

The intention is to make a new modern home that takes advantage of the views to the south overlooking the harbour and Firth of Forth and sits comfortably within the historic fabric and character of the village.

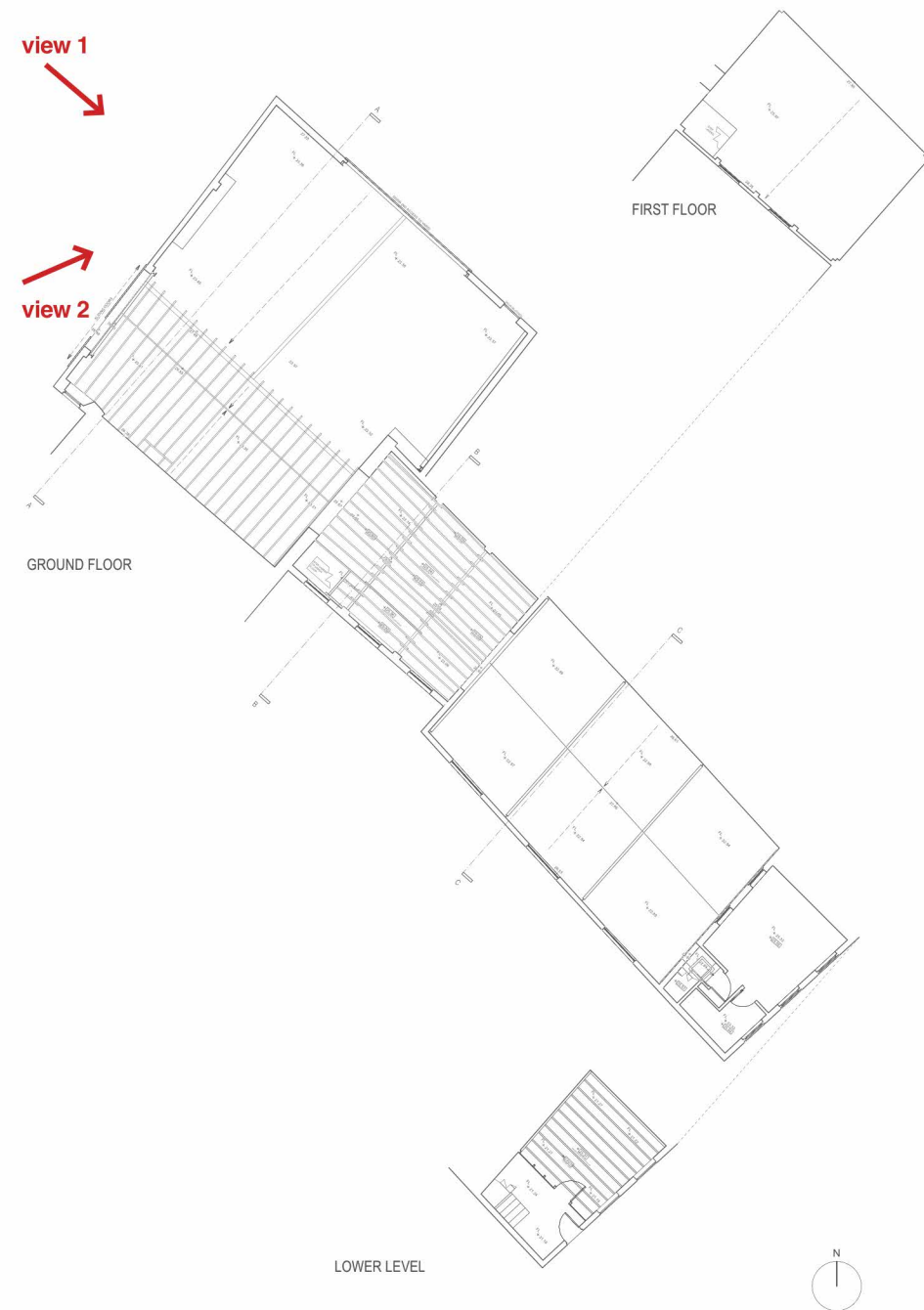


*view of the site from harbour*



# Site Photographs

## Westgate Elevation



Key Plan



View 1 - view of the site from the Westgate

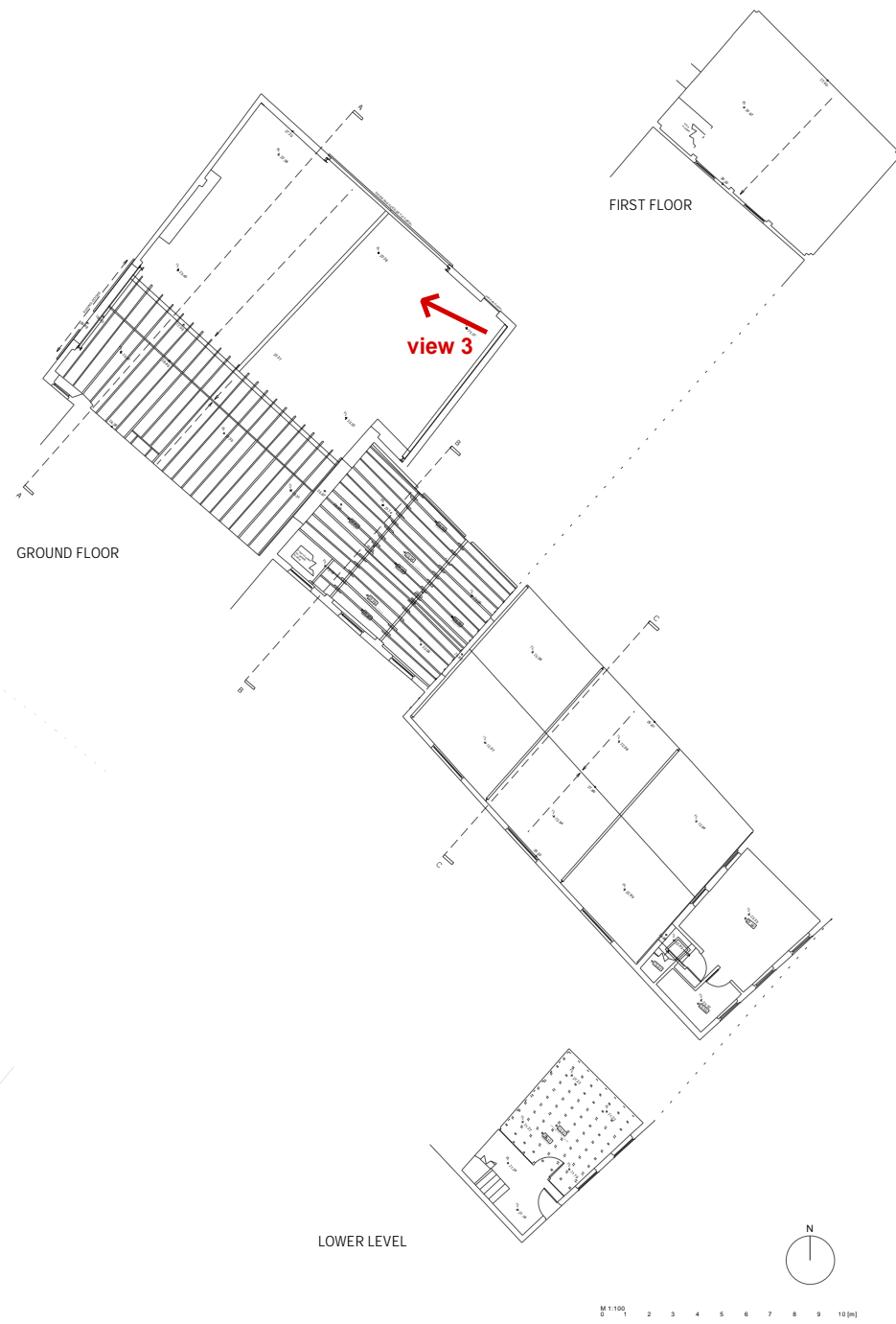


View 2 - view of the site from the Westgate

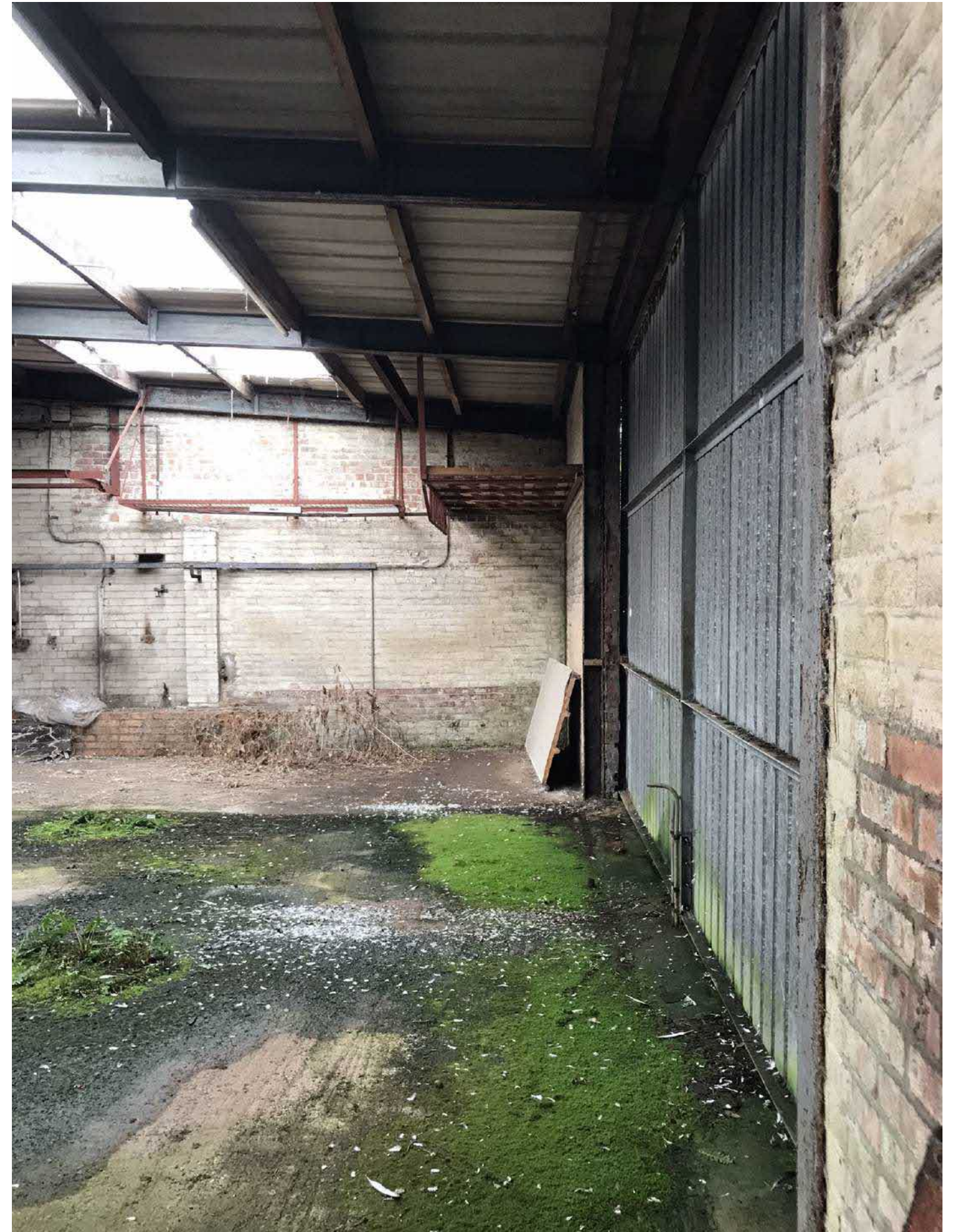


# Site Photographs

Interior



Key Plan

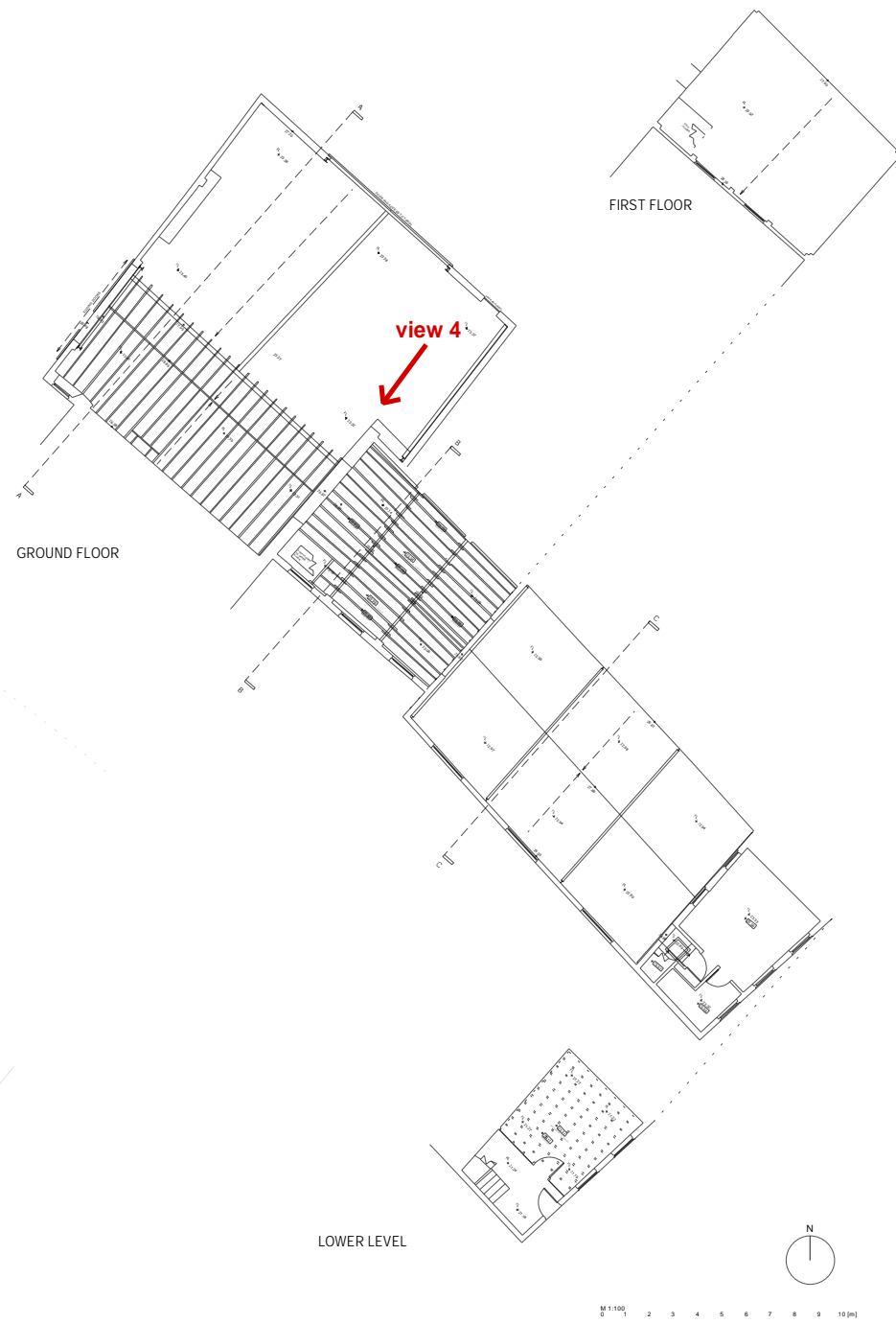


View 3



# Site Photographs

Interior



Key Plan

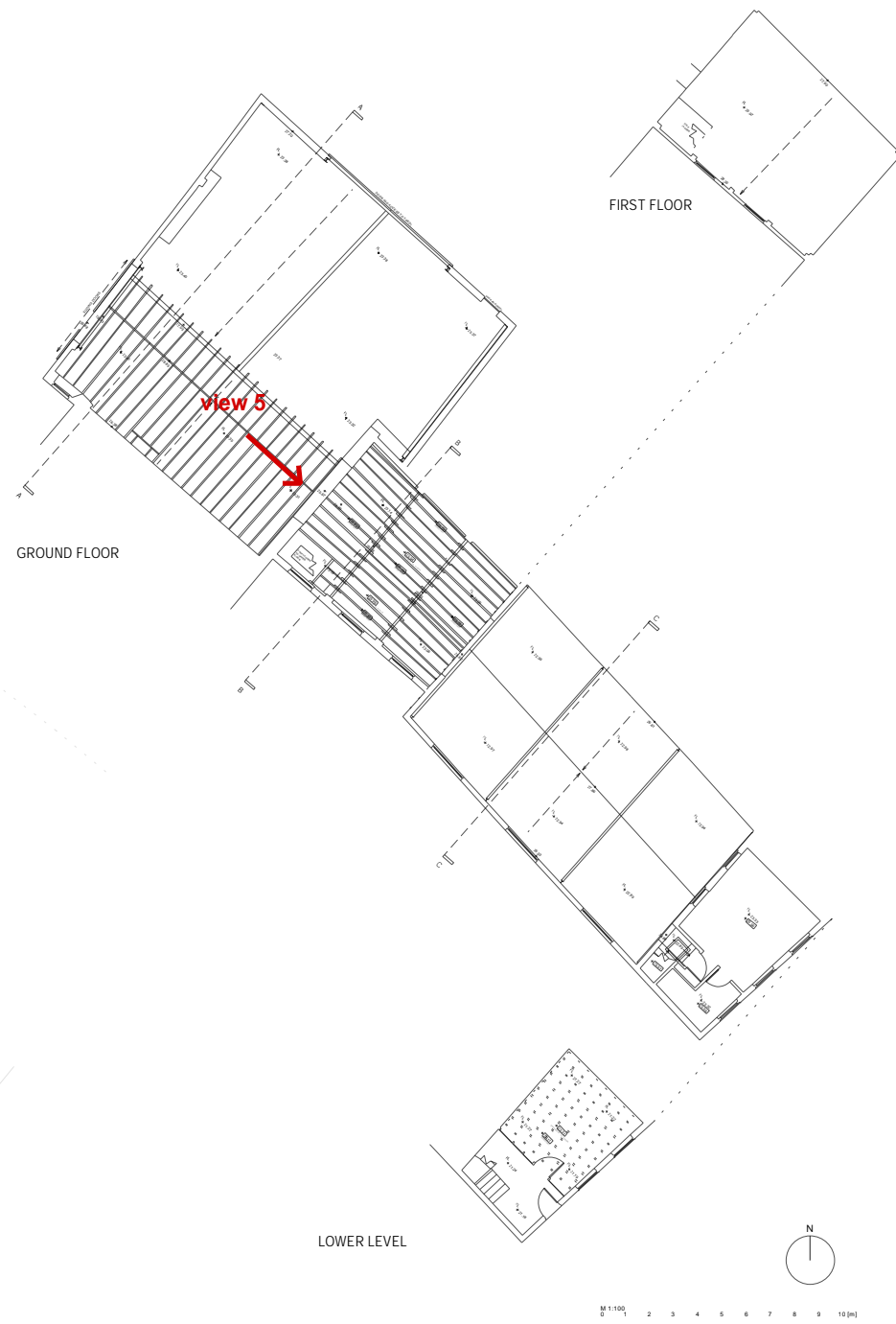


View 4

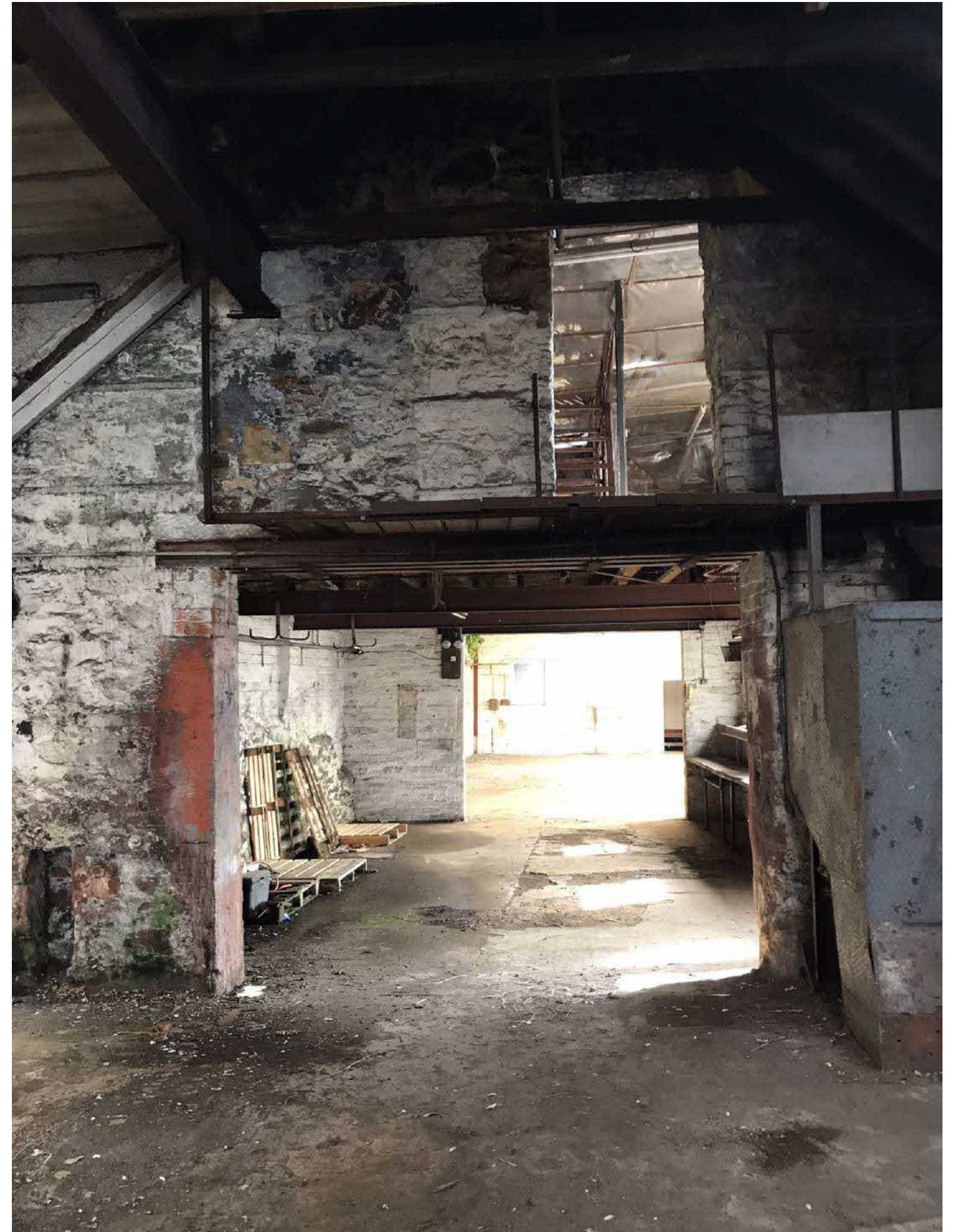


# Site Photographs

Interior



Key Plan

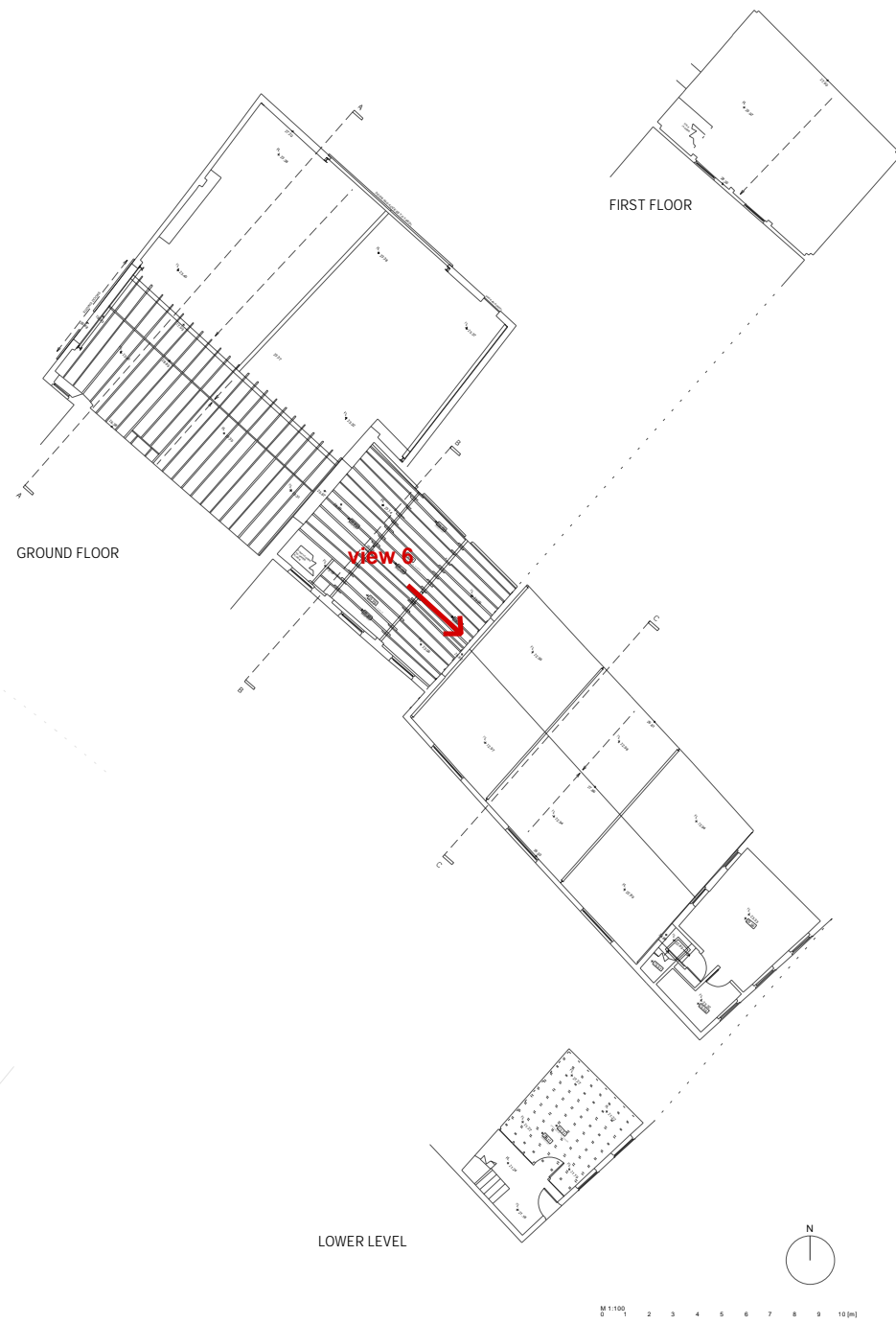


View 5

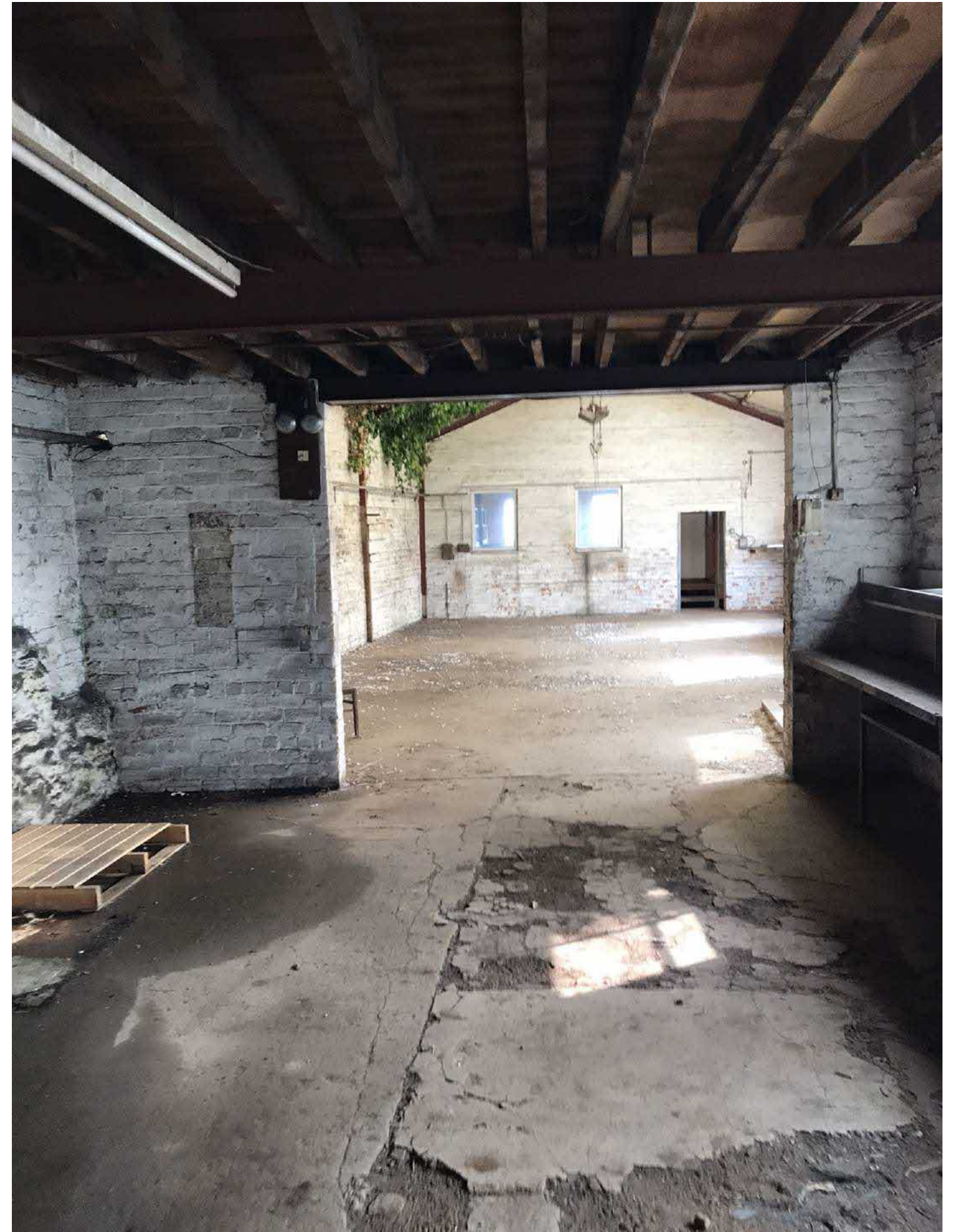


# Site Photographs

Interior



Key Plan

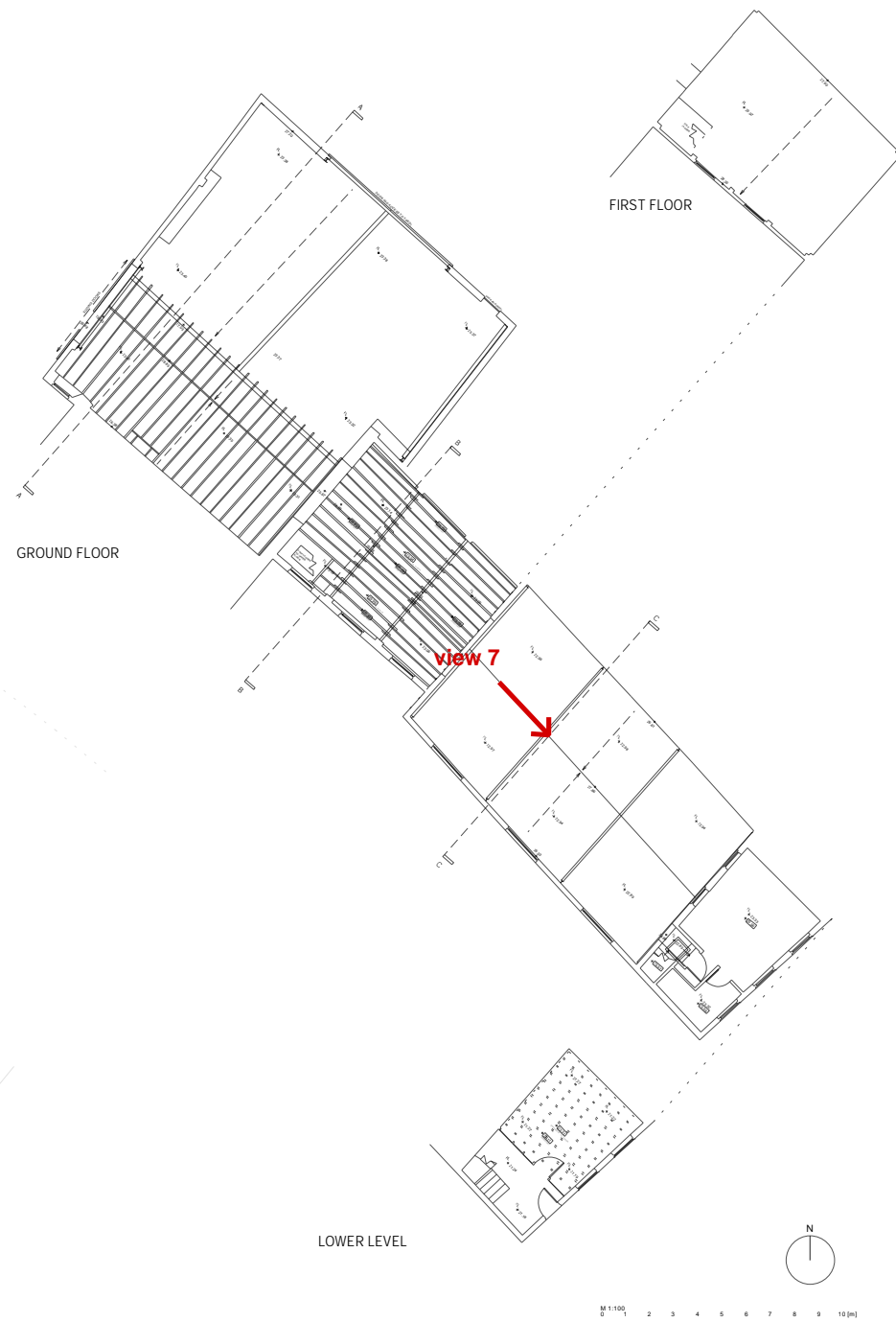


View 6



# Site Photographs

## Interior



Key Plan

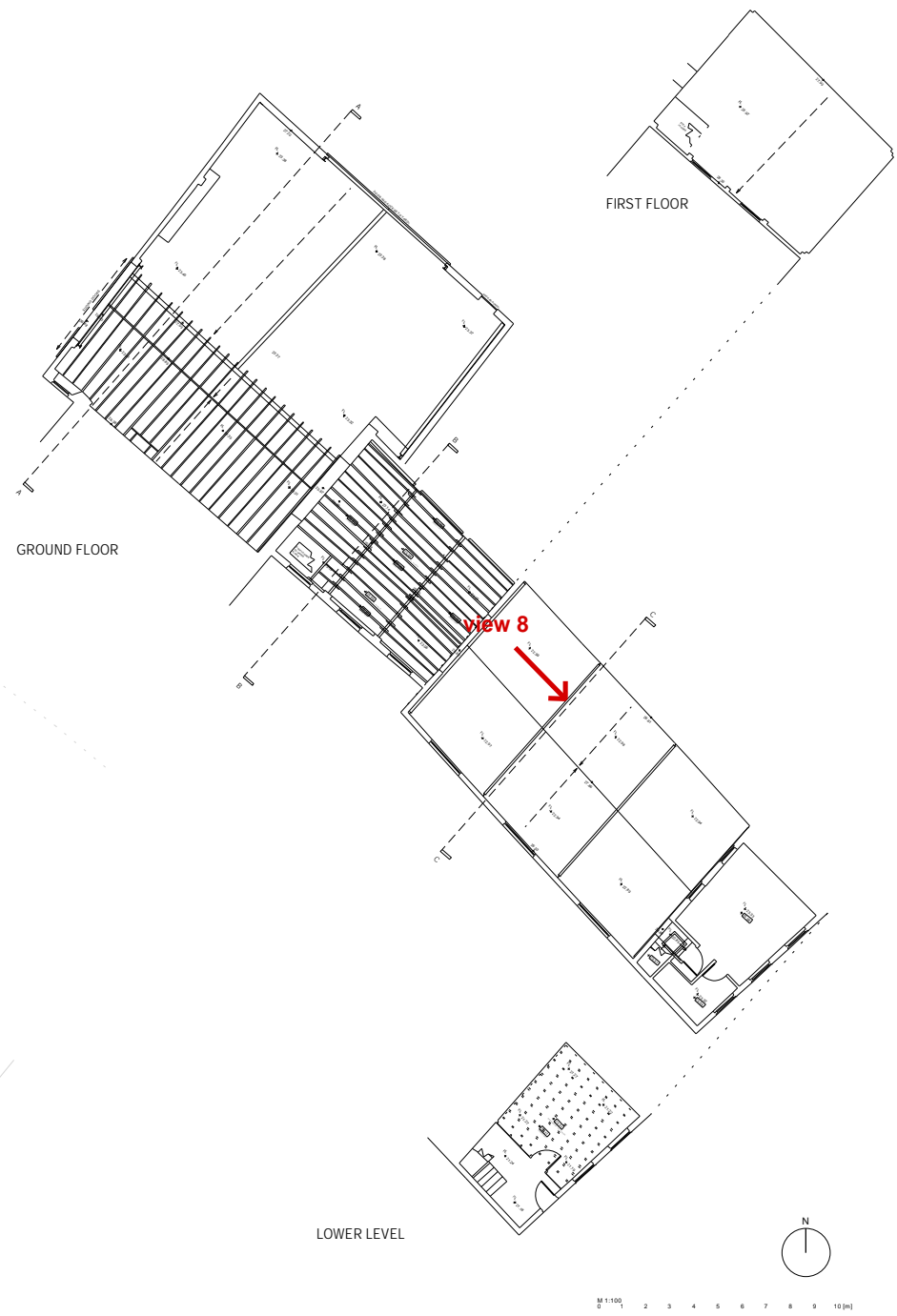


View 7



# Site Photographs

## Interior



Key Plan

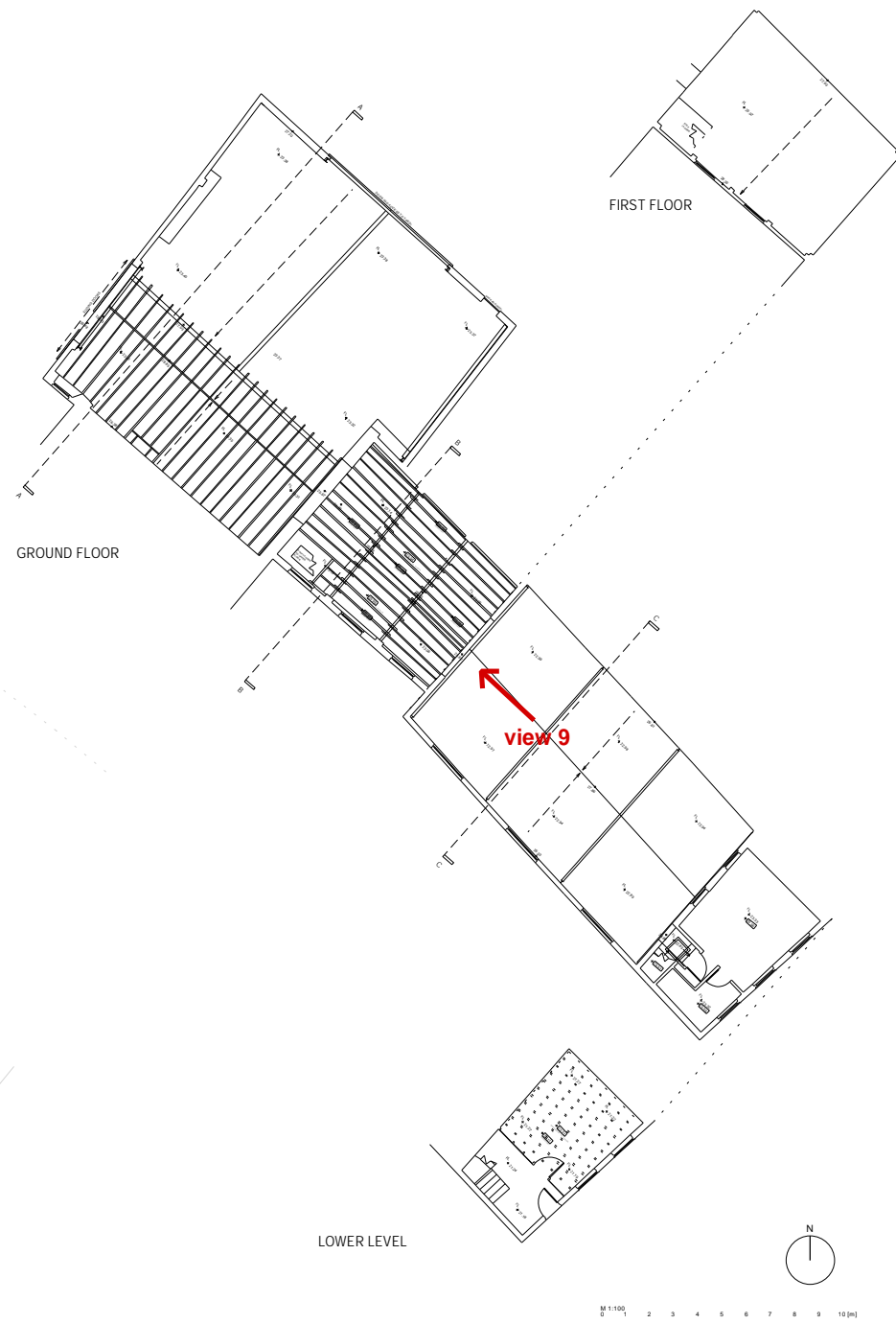


View 8



# Site Photographs

Interior



Key Plan

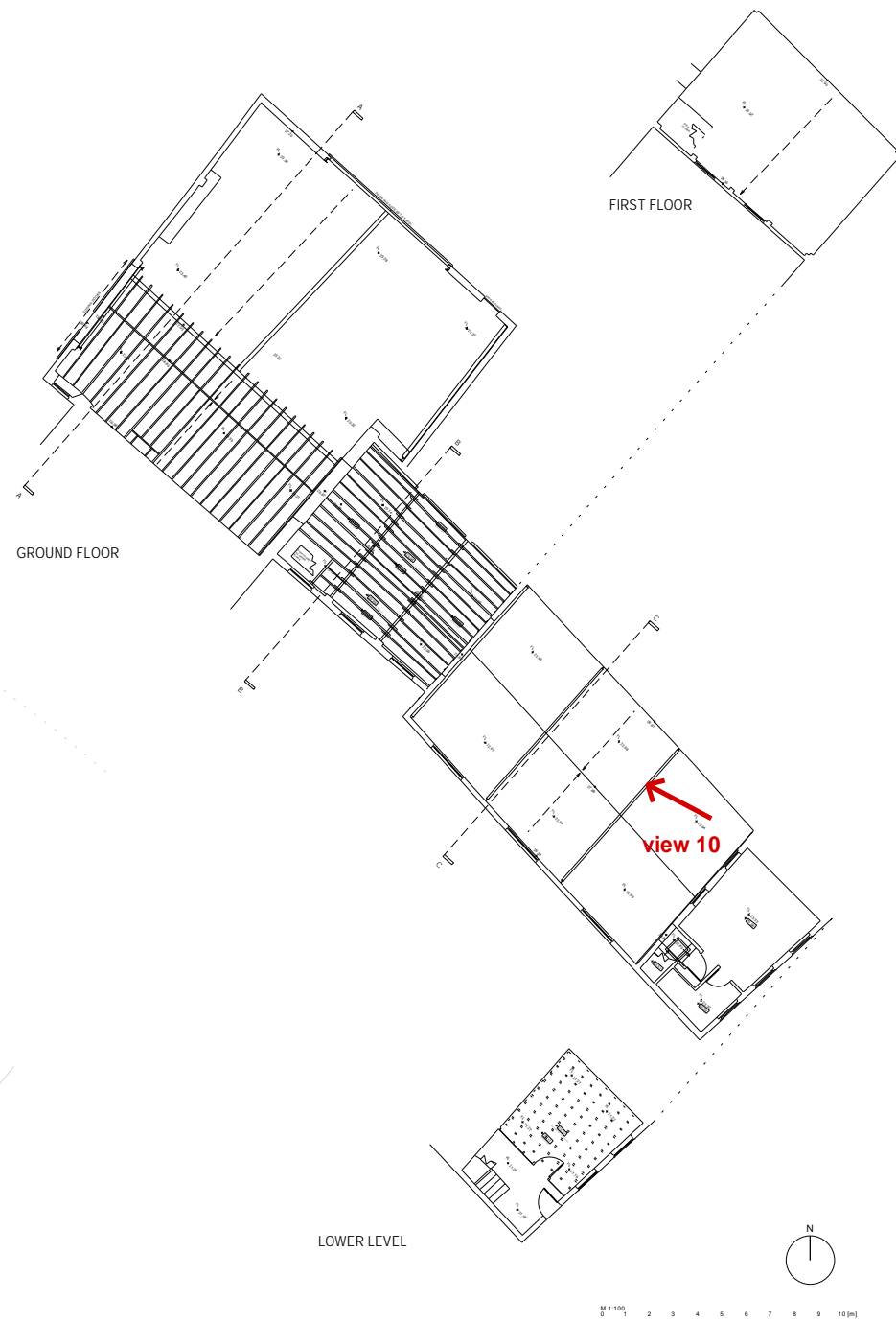


View 9



# Site Photographs

## Interior



Key Plan

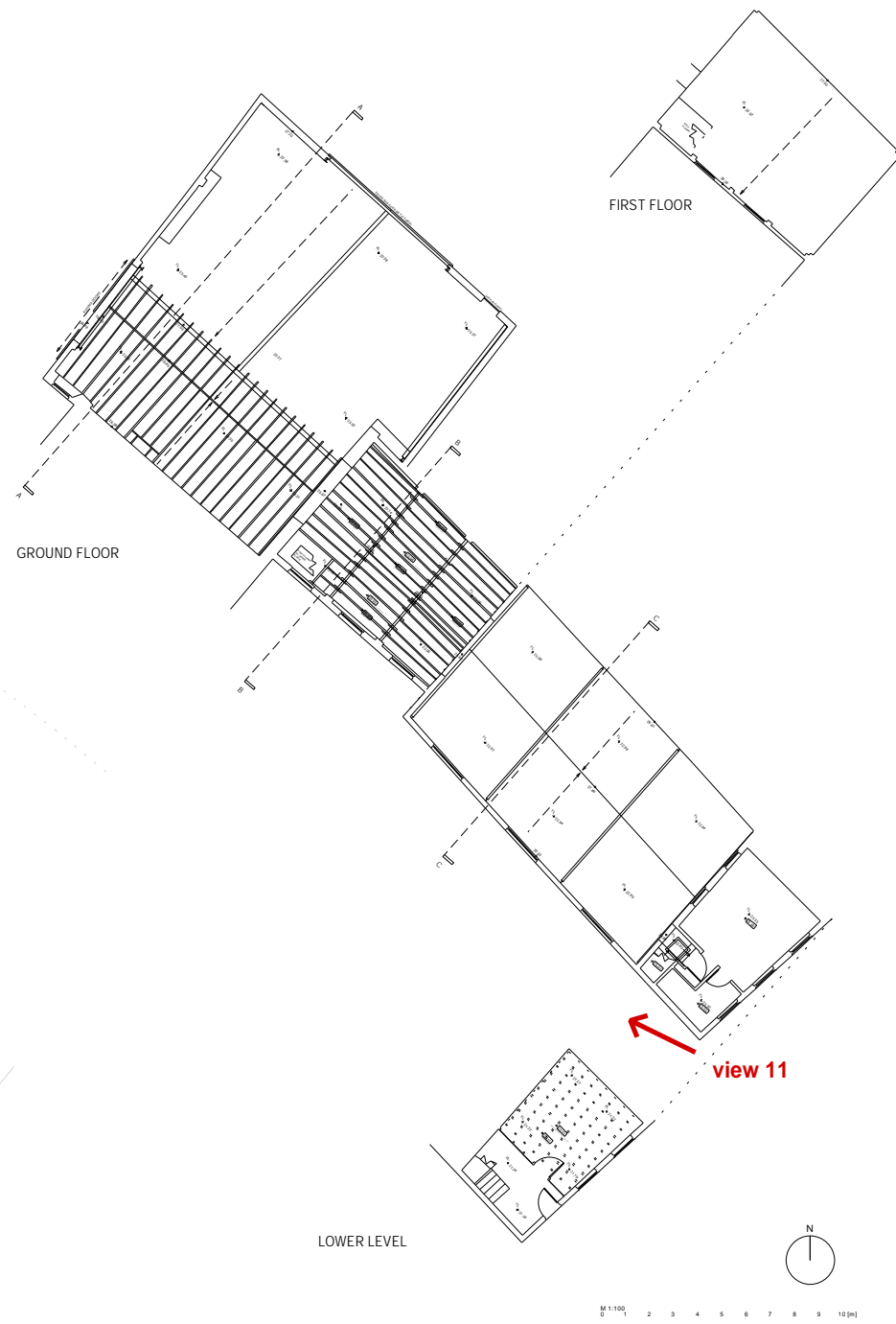


View 10

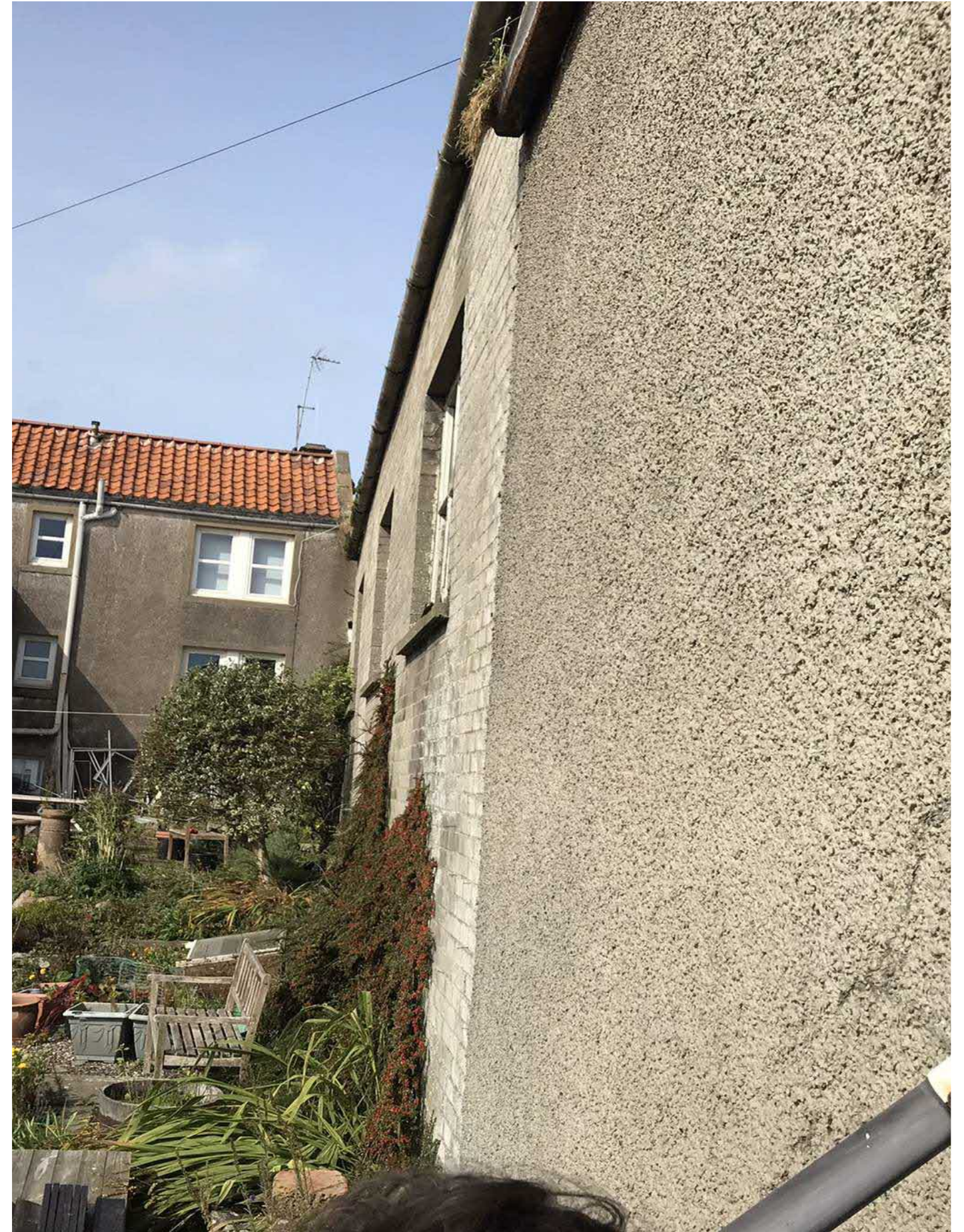


# Site Photographs

West elevation



Key Plan



View 11



# Site Photographs

## Context

site



ROXBURGH | M<sup>c</sup>EWAN ARCHITECTS

42 Forbes Road  
Edinburgh  
EH10 4ED

0131 229 3766.

*wider context view of the site from harbour*