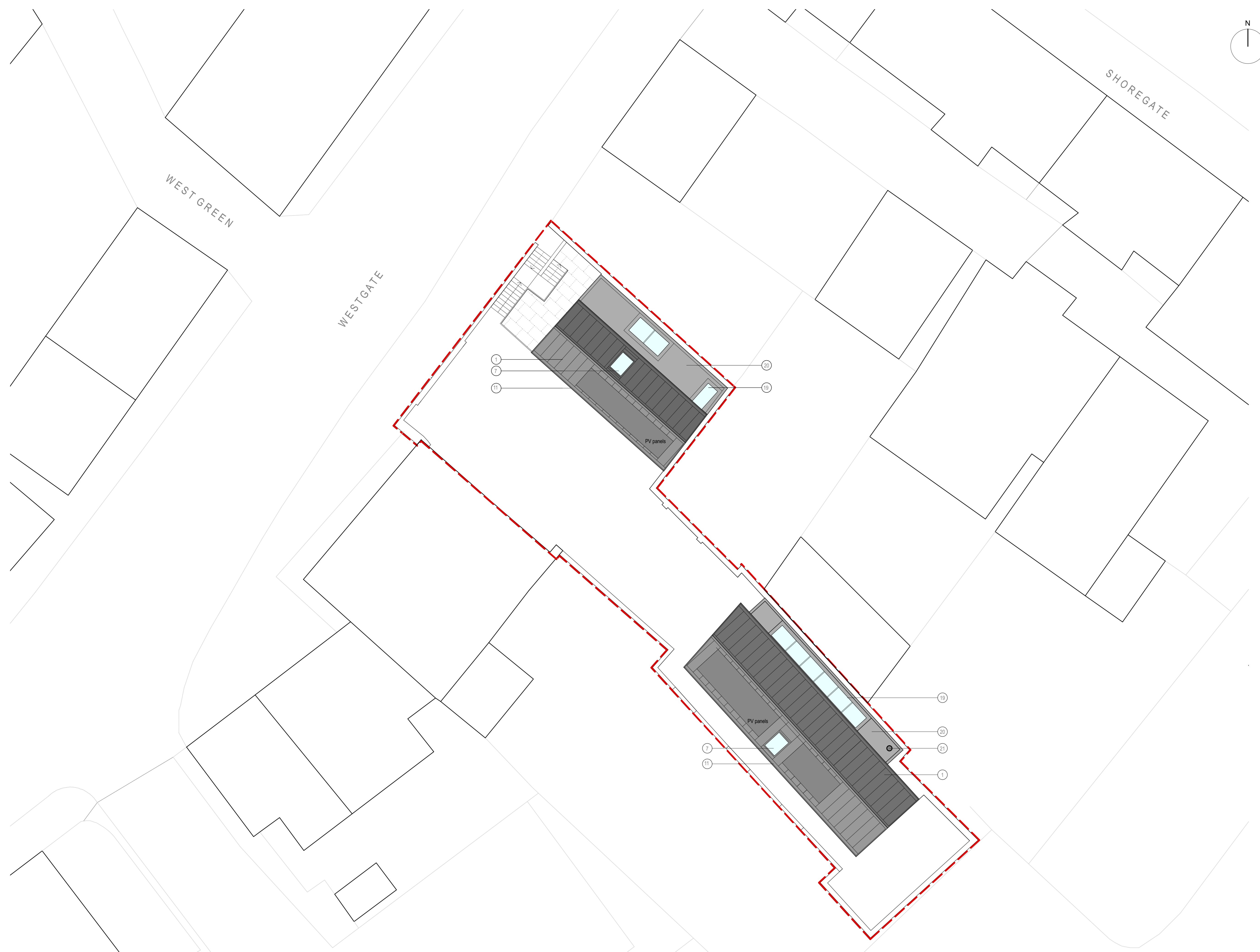
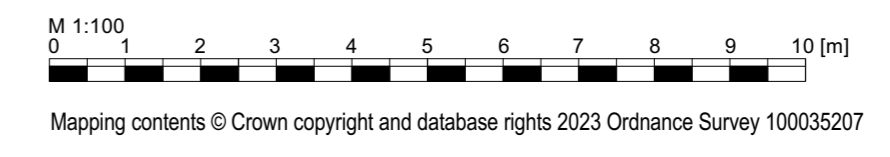


MATERIALS KEY

- 1 Roof cladding
Antra Zinc standing seam
- 2 Wall cladding
Antra Zinc standing seam
- 3 Treated timber cladding
- 4 Reclaimed stone from downtakings
- 5 Render on blockwork
- 6 Aluminium clad windows
- 7 Rooflight
- 8 Precast concrete cope
- 9 Treated timber opening ventilator panel
- 10 Sliding glazed door assembly
- 11 Concealed gutter
- 12 Flashings
Antra Zinc - to match wall and roof cladding
- 13 Glazing assembly
- 14 Brick with limewash render
- 15 Structural glass balcony
- 16 Treated timber external doors
- 17 Existing brickwork with limewash render
- 18 Weathering steel doors
- 19 Flat Rooflight
- 20 Single ply membrane roof covering
- 21 Twin wall stainless steel flue



ROOF PLAN
1:100



Rev A - general revision 05.02.2024

ROXBURGH | M'EWAN ARCHITECTS

42 Forbes Road
Edinburgh
EH10 4ED

tel: 0131 229 3766
www.roxburghmewan.co.uk
info@roxburghmewan.co.uk

Project: Old Smiddy, Crail

Client: Johnny Harris

Drawing: Site Plan - Roof Plan

Scale: 1:100	Drawn: NM	Checked: ---
Status: Planning	Date: Nov 2023	REV: A

Drawing No: 676_P_GA_012