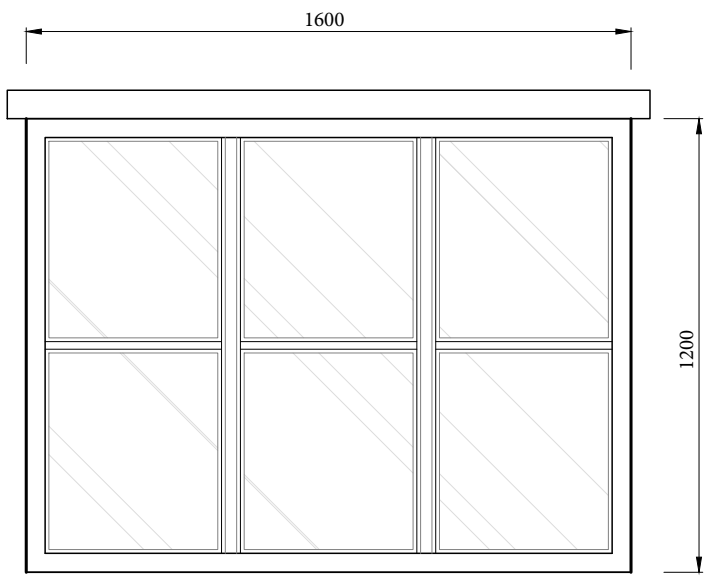
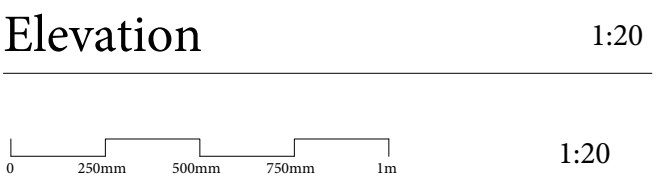


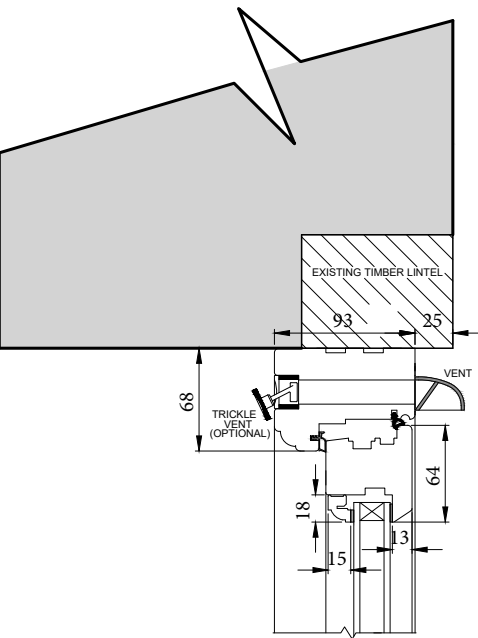
WG01



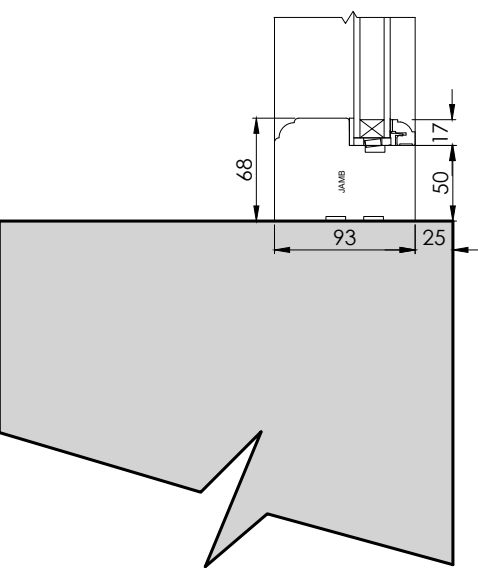
Ground Floor - WG-01 - Front



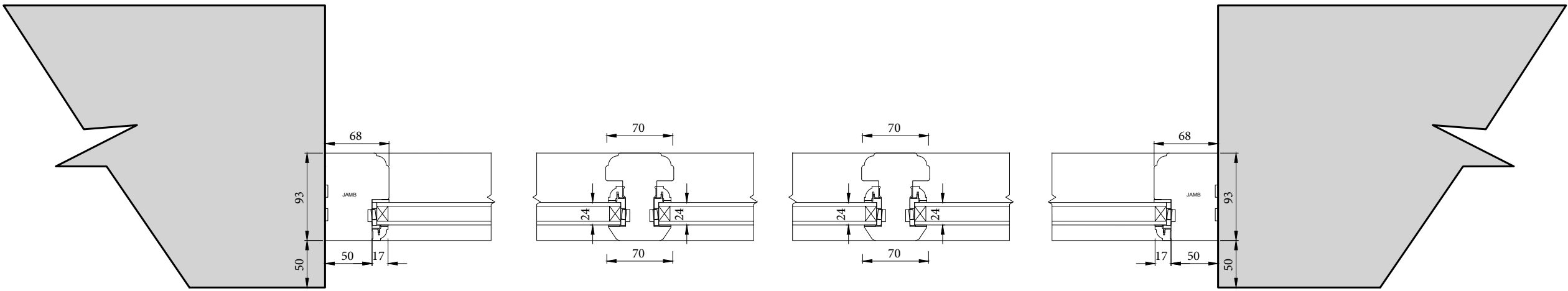
Existing Window



Window Head 1:5

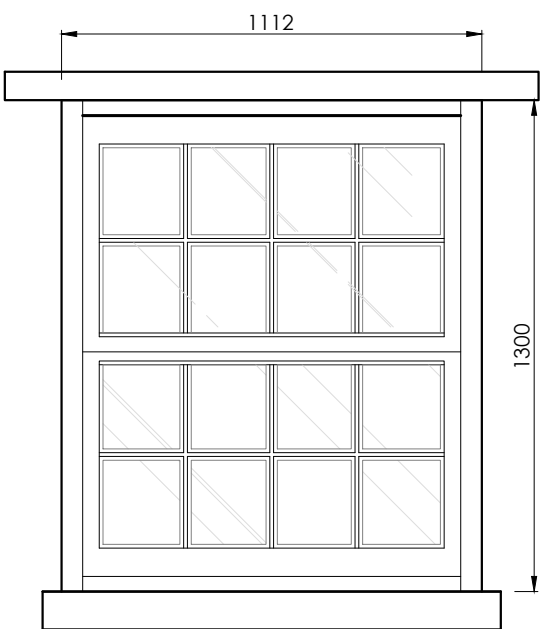


Window Cill 1:5

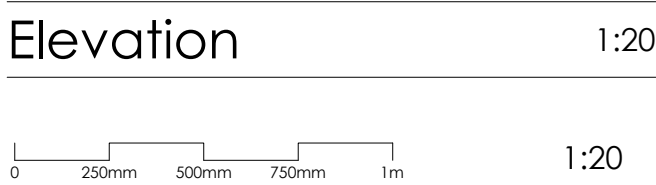


Window Jambs 1:5

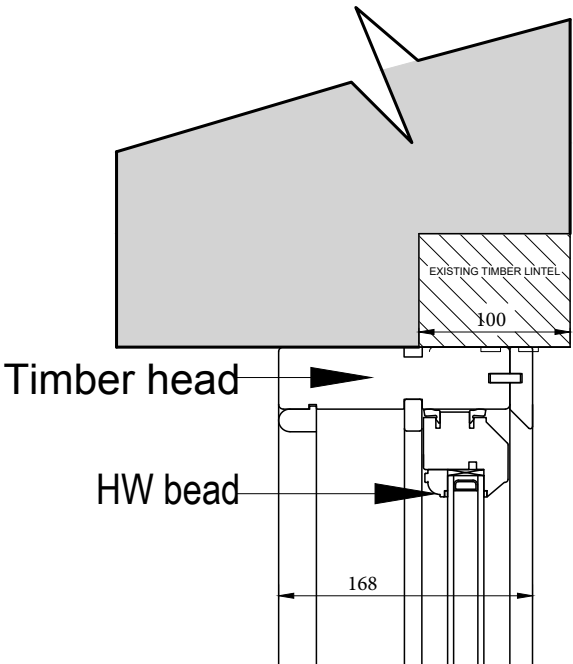
WF01



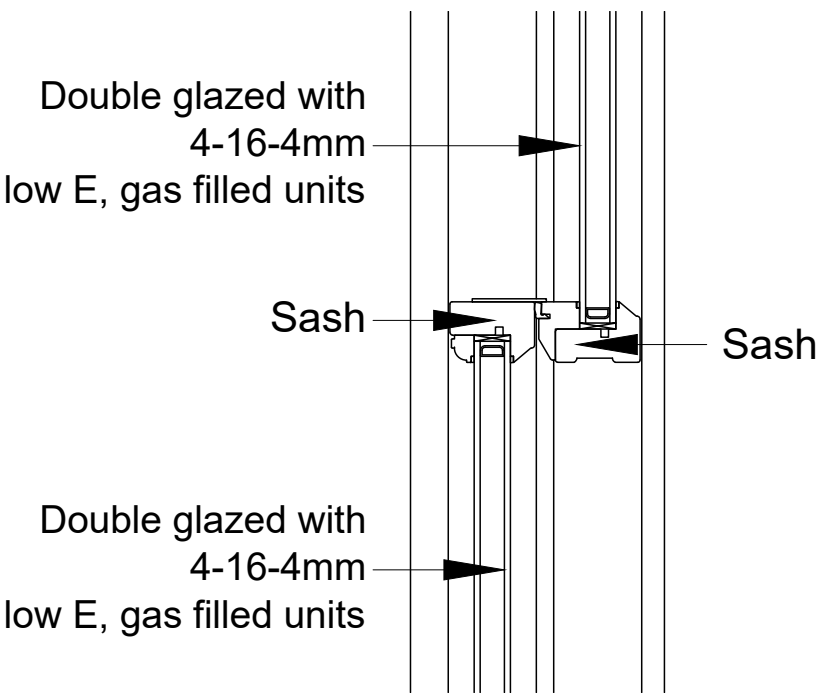
First Floor - WF-01 - Front



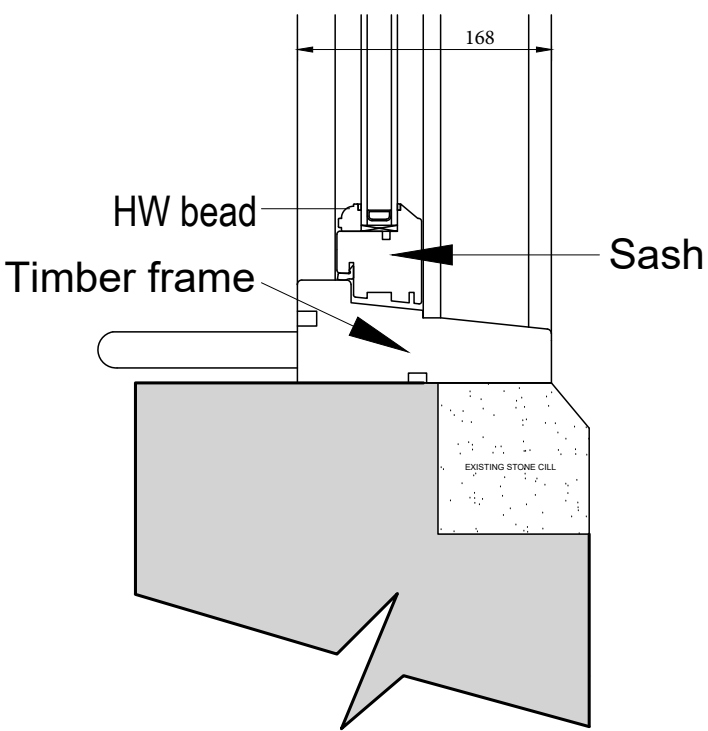
Existing Window



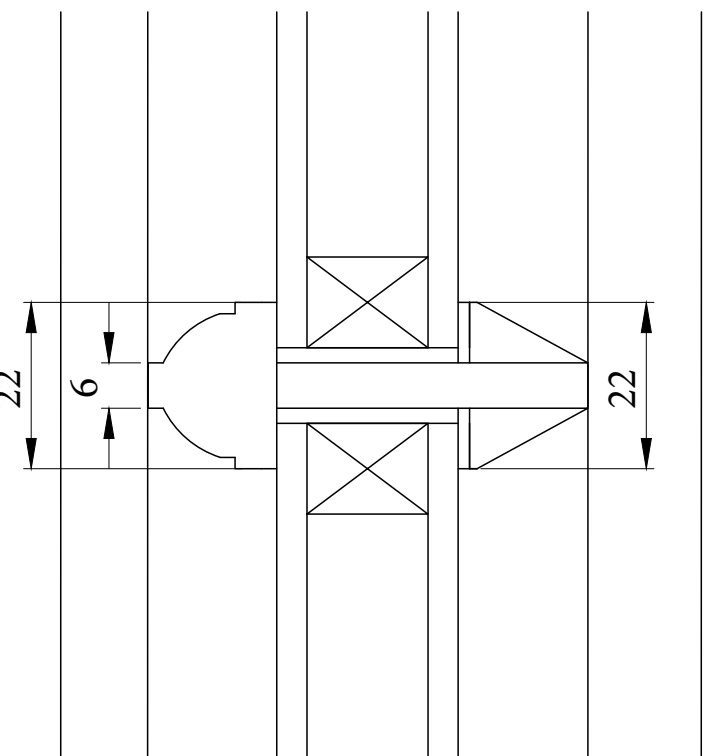
Window Head 1:5



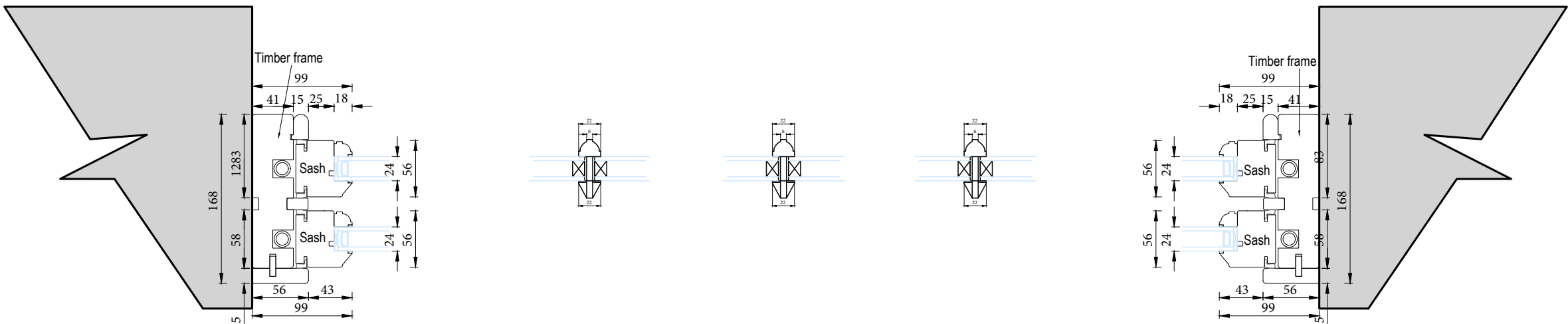
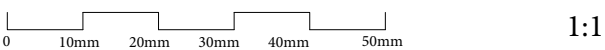
Sash 1:5



Window Cill 1:5



Glazing Bars 1:1



Window Jambs 1:5

Project:
33 High Steet East,
Uppingham,
Oakham,
LE15 9PY

Client:
Mr & Mrs Allen

Date:
Feb 2024

Notes:

EXTERNAL WINDOWS

Contractor/Manufacturer to measure site dimensions for production prior to final fabrication.

The contractor shall check the opening sizes against the size of the new window to ensure that any removed can be replaced without delay.

Frames are to be fitted and fixed in accordance with the manufacturer's instructions by drilling and fixing through the outer frame into suitable surrounds with the appropriate fixings.

All windows shall be internally beaded, glazing must be in accordance with Approved Document K, BS EN 12600:2002 and BS 6206:1981.

The lifespan of the proposed system must be 60 years with regular maintenance. The window system must meet the air permeability requirements of test pressure class 600PA given in BS 6375 part 1:2009, and no deformation or damage must be recorded at an applied wind pressure of 2400PA. The window system must meet the weather tightness requirements of test pressure class 300 given in BS 6375 part 1:2009, and the window system must be tested to meet the requirements of BS6375-2:2009 and BS EN 12046-1:2003.

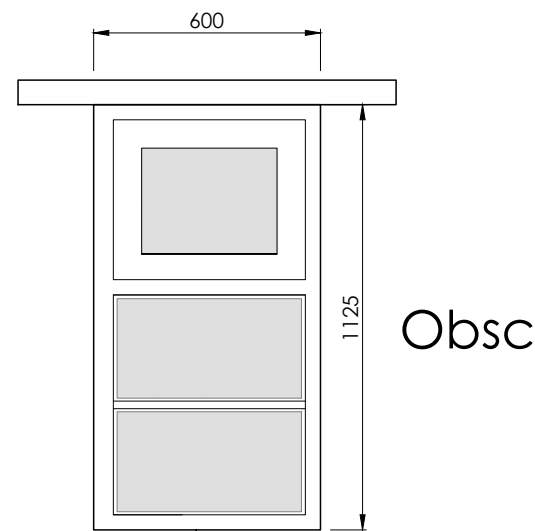
Scale:
VARIOUS

Page no:
1 of 3

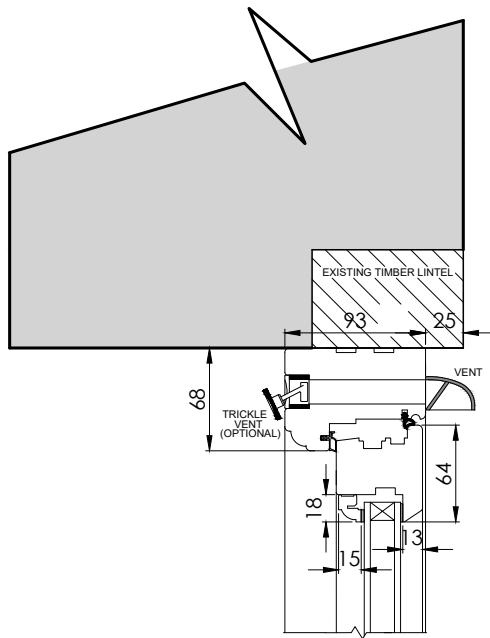
Drawing:
New Window Details

Paper size:
A1

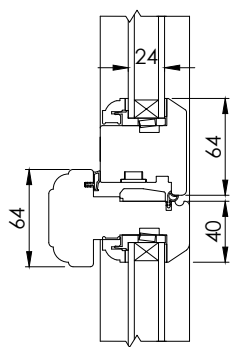
WF02



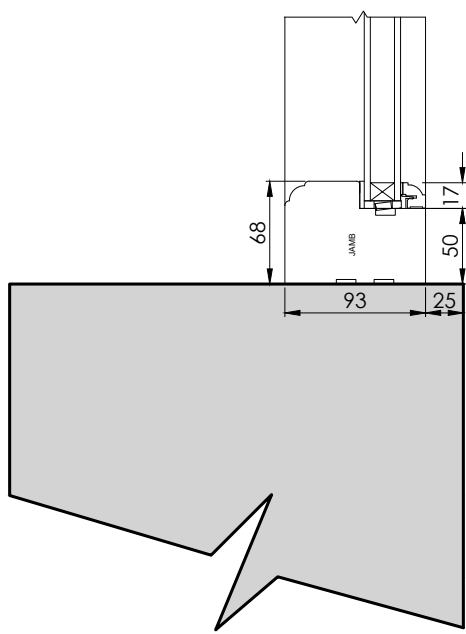
First Floor - WF-02- Rear



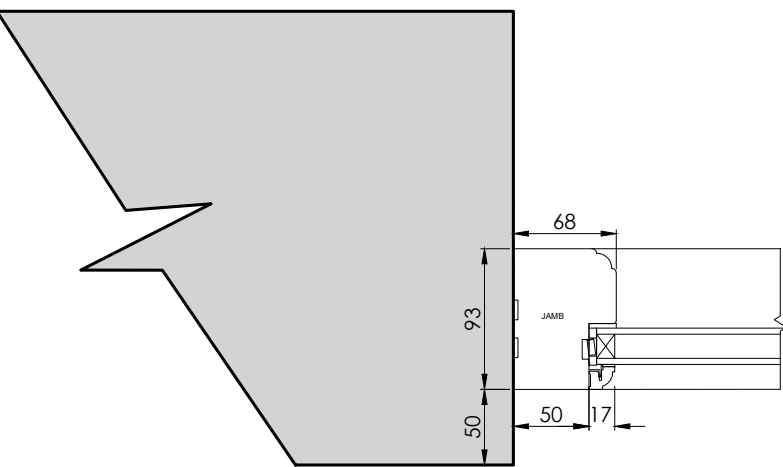
Window Head 1:5



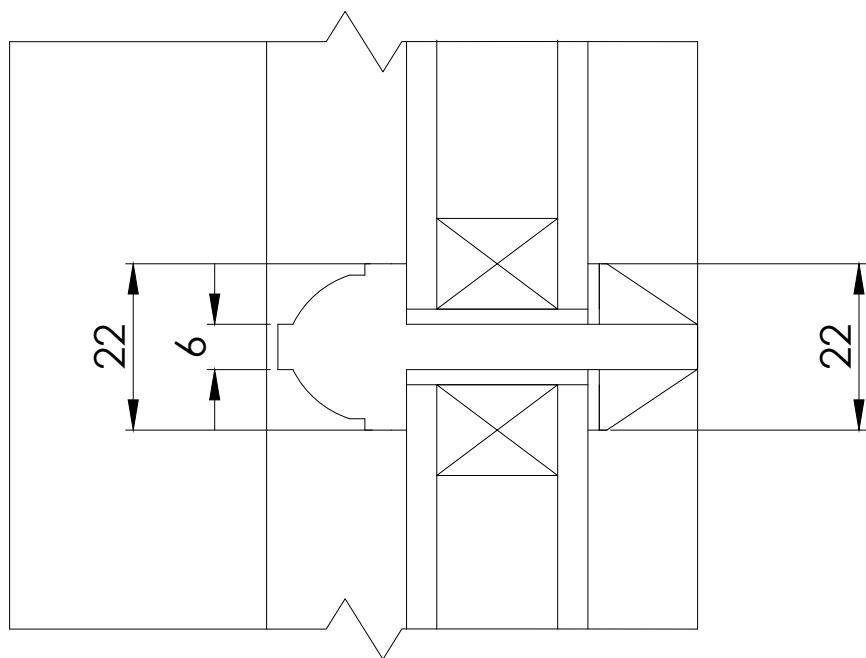
Mullion 1:5



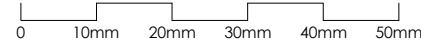
Window Cill 1:5



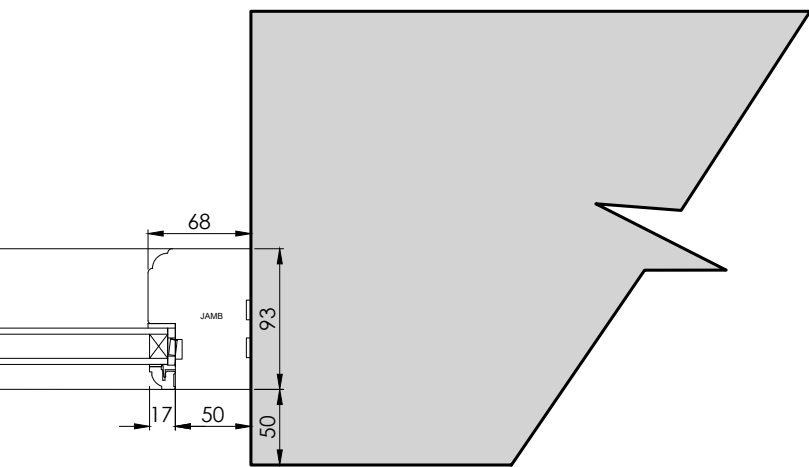
Window Jamb 1:5



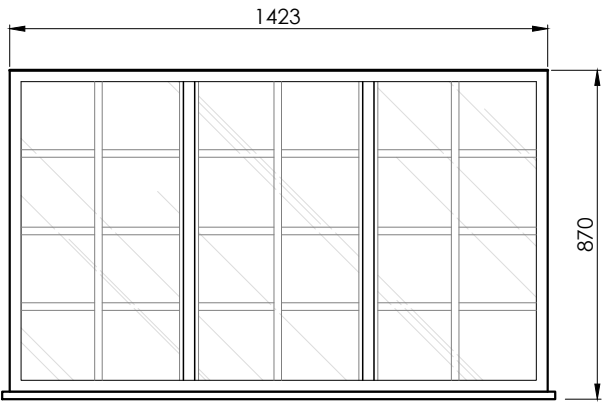
Glazing Bars 1:1



1:1



WS01



Second Floor - WS-01- Front

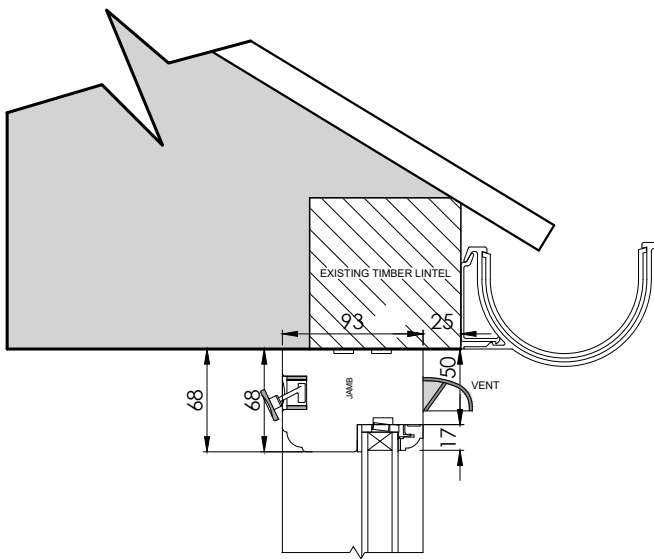
Elevation 1:20



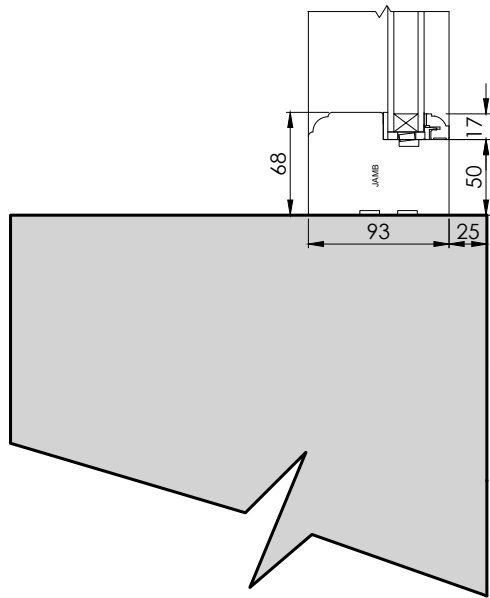
1:20



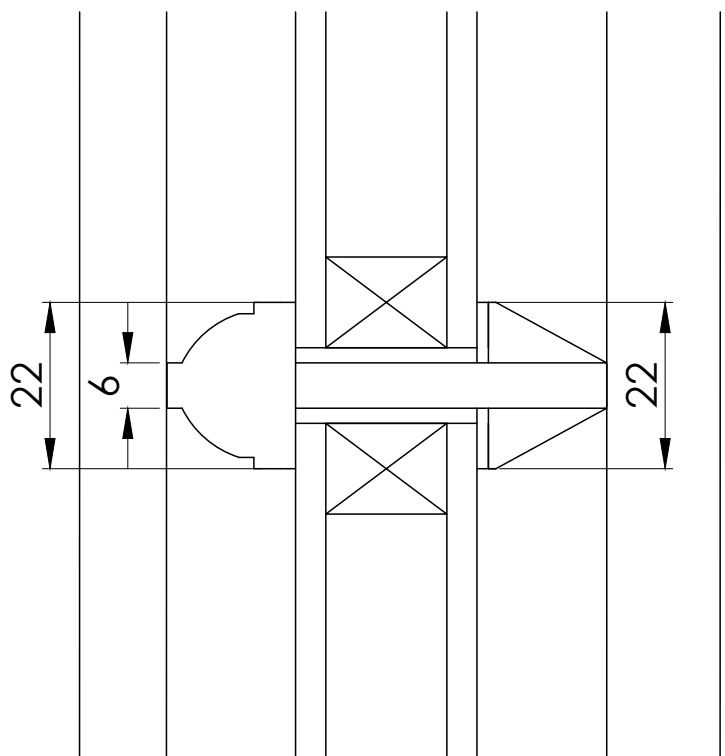
Existing Window



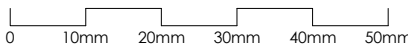
Window Head 1:5



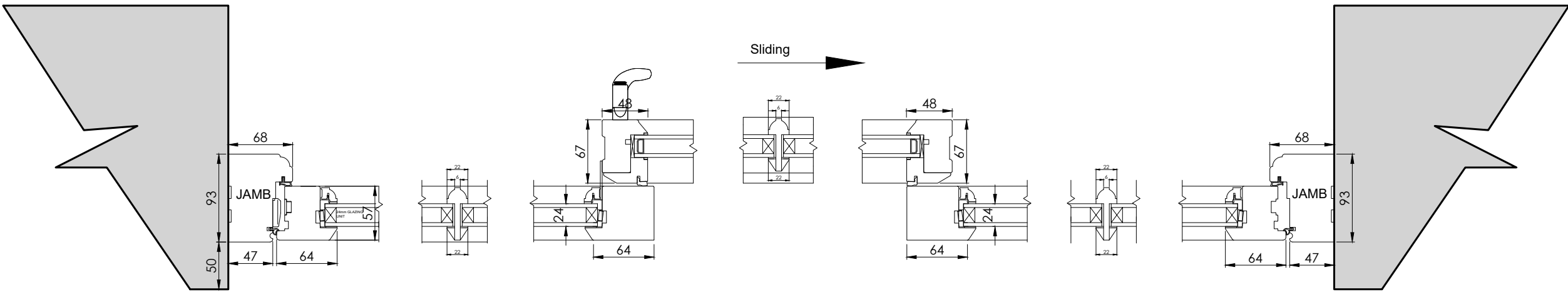
Window Cill 1:5



Glazing Bars 1:1



1:1



Window Jamb 1:5



Project:
33 High Steet East,
Uppingham,
Oakham,
LE15 9PY

Client:
Mr & Mrs Allen

Date:
Feb 2024

Notes:

EXTERNAL WINDOWS

Contractor/Manufacturer to measure site dimensions for production prior to final fabrication.

The contractor shall check the opening sizes against the size of the new window to ensure that any removed can be replaced without delay.

Frames are to be fitted and fixed in accordance with the manufacturer's instructions by drilling and fixing through the outer frame into suitable surrounds with the appropriate fixings.

All windows shall be internally beaded, glazing must be in accordance with Approved Document K, BS EN 12600:2002 and BS 6206:1981.

The lifespan of the proposed system must be 60 years with regular maintenance. The window system must meet the air permeability requirements of test pressure class 600PA given in BS 6375 part 1:2009, and no deformation or damage must be recorded at an applied wind pressure of 2400PA. The window system must meet the weather tightness requirements of test pressure class 300 given in BS 6375 part 1:2009, and the window system must be tested to meet the requirements of BS6375-2:2009 and BS EN 12046-1:2003.

Scale:

VARIOUS

Page no:

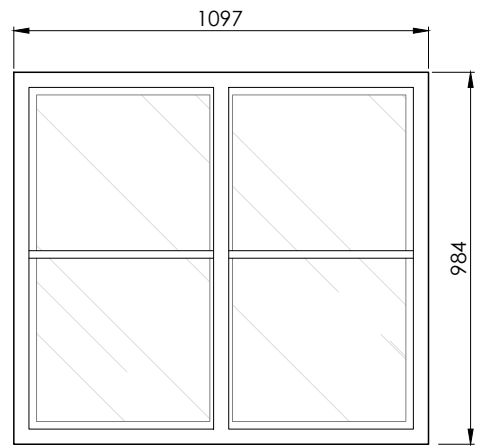
2 of 3

Paper size:

A1

Drawing:

New Window Details

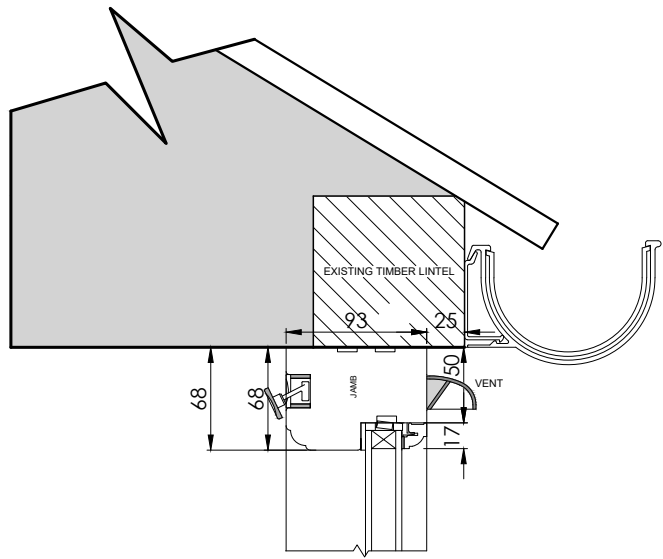
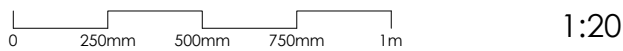


Second Floor - WS-02- Rear

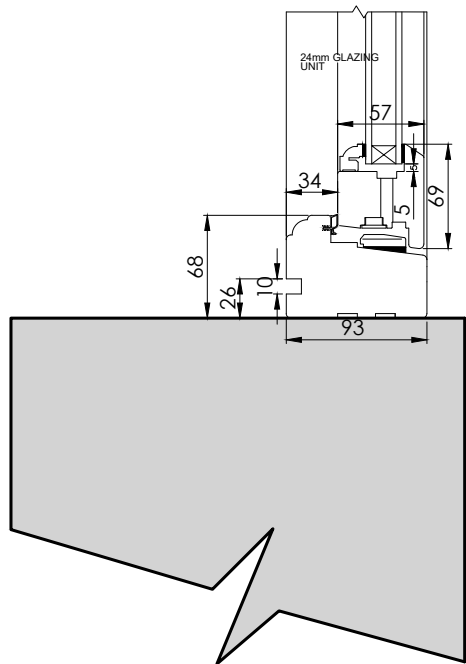


Existing Window

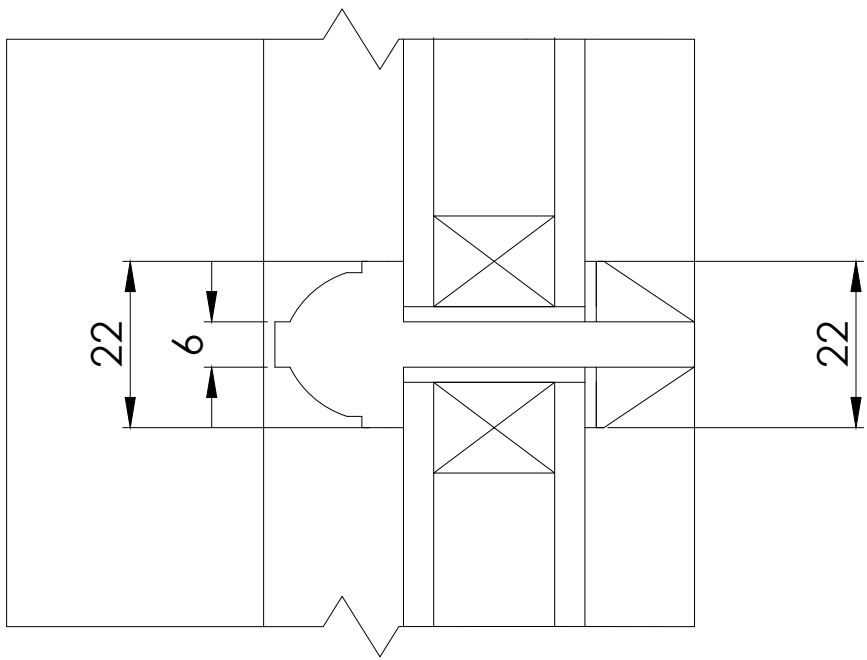
Elevation 1:20



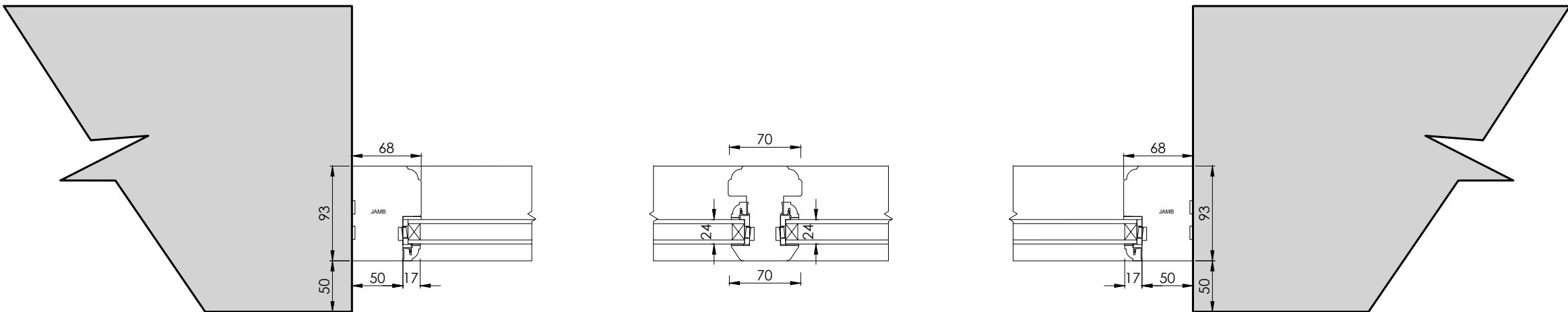
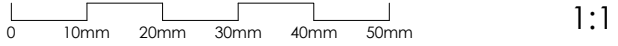
Window Head 1:5



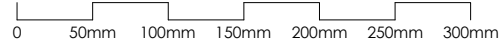
Window Cill 1:5



Glazing Bars 1:1



Window Jambs 1:5



<p>Project: 33 High Street East, Uppingham, Oakham, LE15 9PY</p>			
<p>Client: Mr & Mrs Allen</p>			
<p>Date: Feb 2024</p>			
<p>Notes:</p> <p>EXTERNAL WINDOWS</p> <p>Contractor/Manufacturer to measure site dimensions for production prior to final fabrication.</p> <p>The contractor shall check the opening sizes against the size of the new window to ensure that any removed can be replaced without delay.</p> <p>Frames are to be fitted and fixed in accordance with the manufacturer's instructions by drilling and fixing through the outer frame into suitable surrounds with the appropriate fixings.</p> <p>All windows shall be internally beaded, glazing must be in accordance with Approved Document K, BS EN 12600:2002 and BS 6206:1981.</p> <p>The lifespan of the proposed system must be 60 years with regular maintenance. The window system must meet the air permeability requirements of test pressure class 600PA given in BS 6375 part 1:2009, and no deformation or damage must be recorded at an applied wind pressure of 2400PA. The window system must meet the weather tightness requirements of test pressure class 300 given in BS 6375 part 1:2009, and the window system must be tested to meet the requirements of BS6375-2:2009 and BS EN 12046-1:2003.</p>			
<p>Scale:</p> <p>VARIOUS</p>			
<p>Page no:</p> <p>3 of 3</p>			<p>Paper size:</p> <p>A1</p>
<p>Drawing:</p> <p>New Window Details</p>			