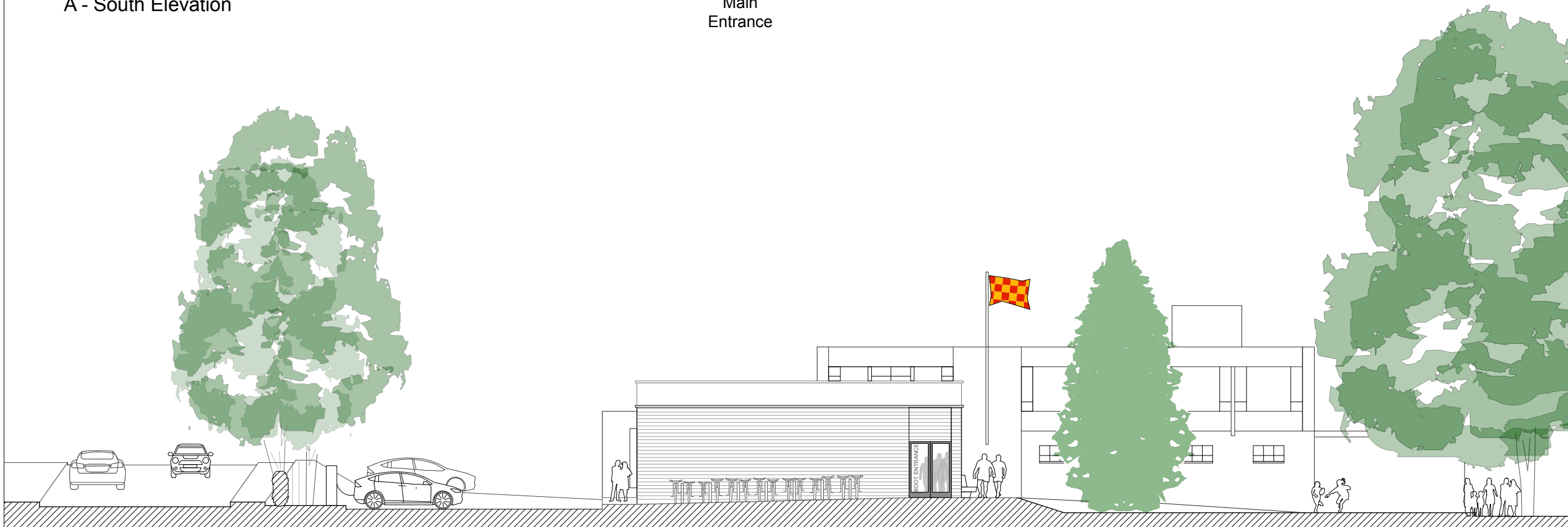




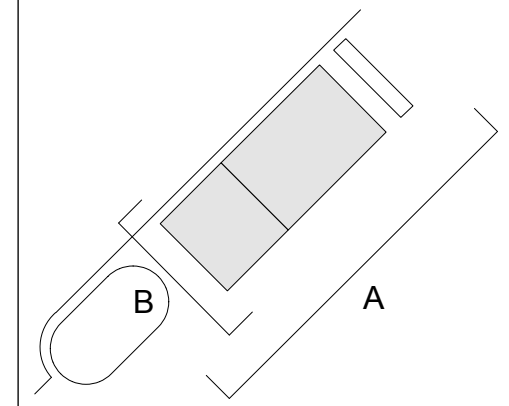
A - South Elevation

▲
Main
Entrance



B - West Elevation

▲
Boot
Entrance



| | | | |
|-----|-------|----------|-------------|
| P1 | 01/24 | | Planning |
| rev | date | initials | description |

Carol Hamilton
ARCHITECT

B.Arch (Hons) Dip. Arch RIAS

arb 26 Braeside Avenue, Milngavie, Glasgow, G62 6LJ
T. 0141 956 2089 E. cg.hamilton@virgin.net

Project
**WEST OF SCOTLAND
FOOTBALL CLUB
TRAINING PAVILION**

Drawing Title
**PROPOSED ELEVATIONS
SOUTH + WEST**

| | | |
|-------------------------------|--------------------------------|--------------------|
| Drawn | Checked | Approved |
| Date 01/2024 | Scale 1:200 @ A3 | Status Planning |
| Project Number 2207 | Drawing Number 00-20 | Rev. P1 |