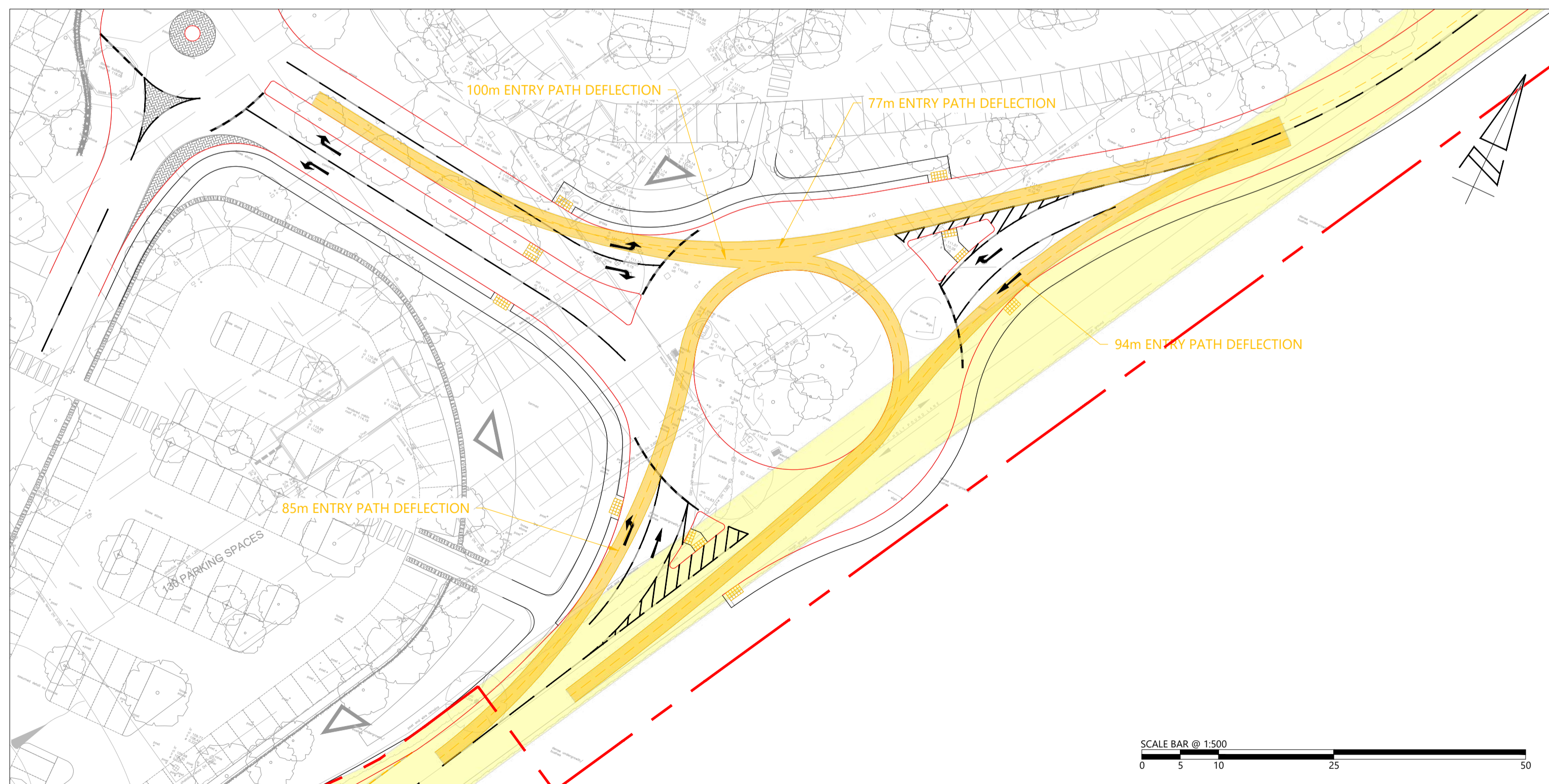
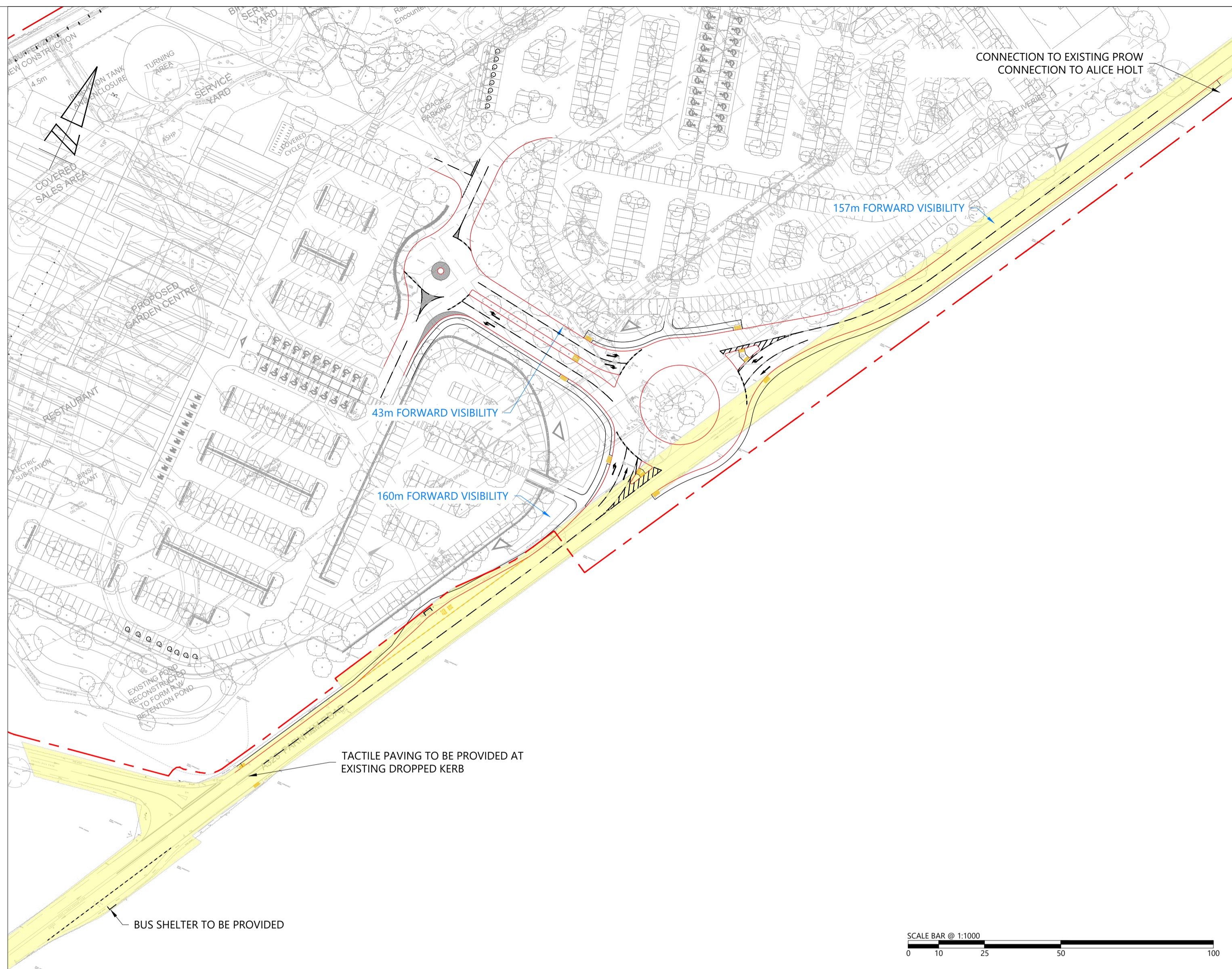
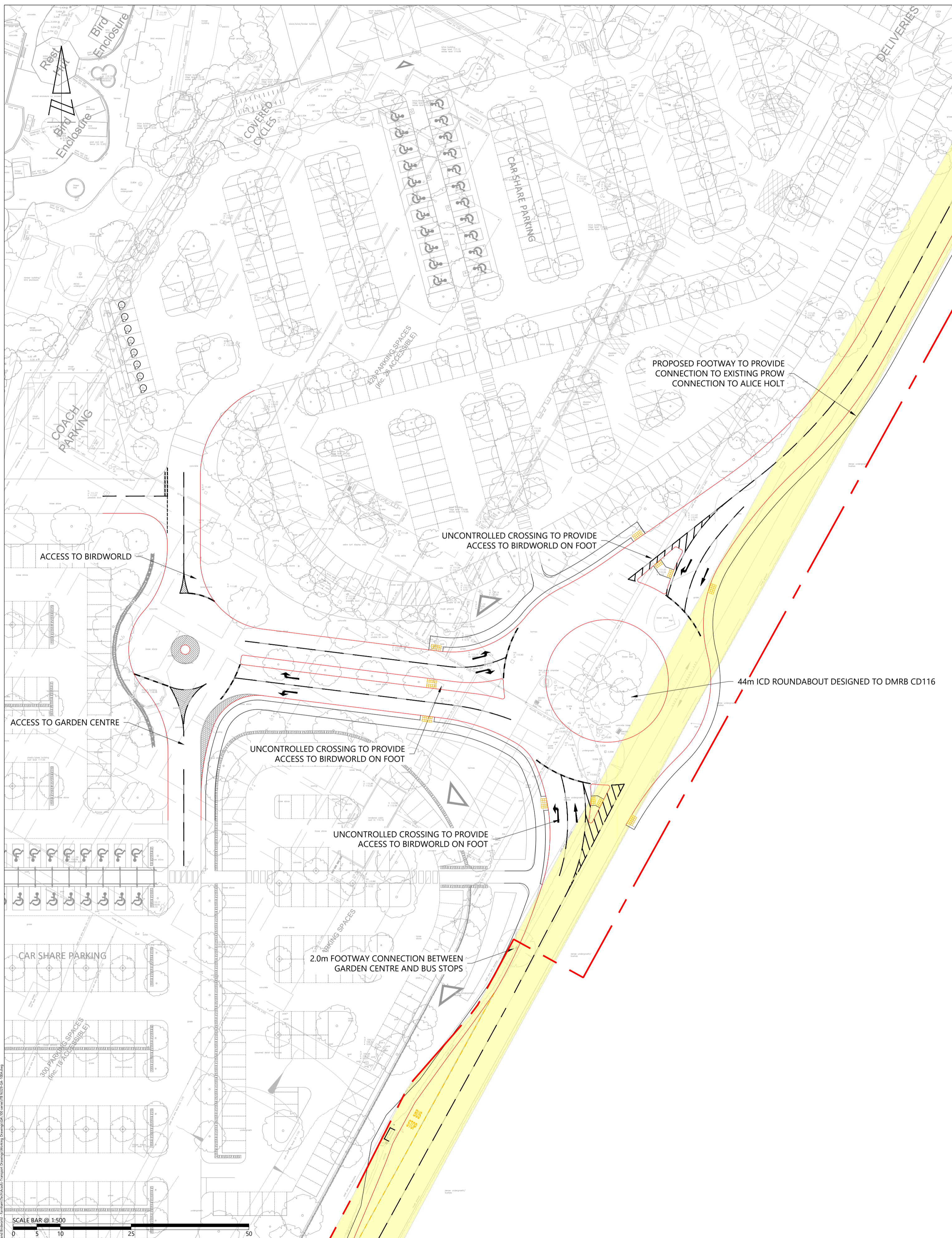


Appendix A1

Documents and Drawings provided for this Stage 1 Road Safety Audit

Audit Stage	Doc. No.	Rev	Title
Stage 1	ITB16329-016	-	Stage 1 Road Safety Audit Brief <i>(provided digitally on request)</i>
	ITB16329-WCHAR		Walking Cycling Horse riding Assessment Report <i>(provided digitally on request)</i>
	Dwg No.	Rev	Title
	ITB16329-GA-100	A	Proposed Three Arm Roundabout Access Arrangement
	ITB16329-GA-101	A	Design Review
	ITB16329-GA-102	A	Vehicle Swept Path Analysis
	ITB16329-GA-103	A	Forward Visibility
	ITB16329-GA-104	A	Long Section of Visibility 1.5x SSD – Sheet 1 of 2
	ITB16329-GA-105	A	Long Section of Visibility 1.5x SSD – Sheet 2 of 2
ITB16329-GA-106		Proposed Three Arm Roundabout Access Arrangement Option 2	

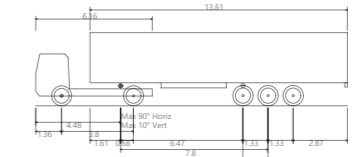
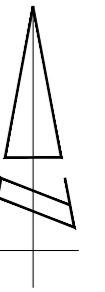
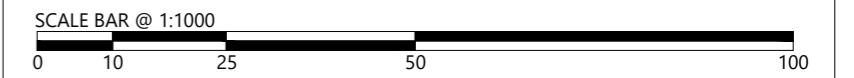
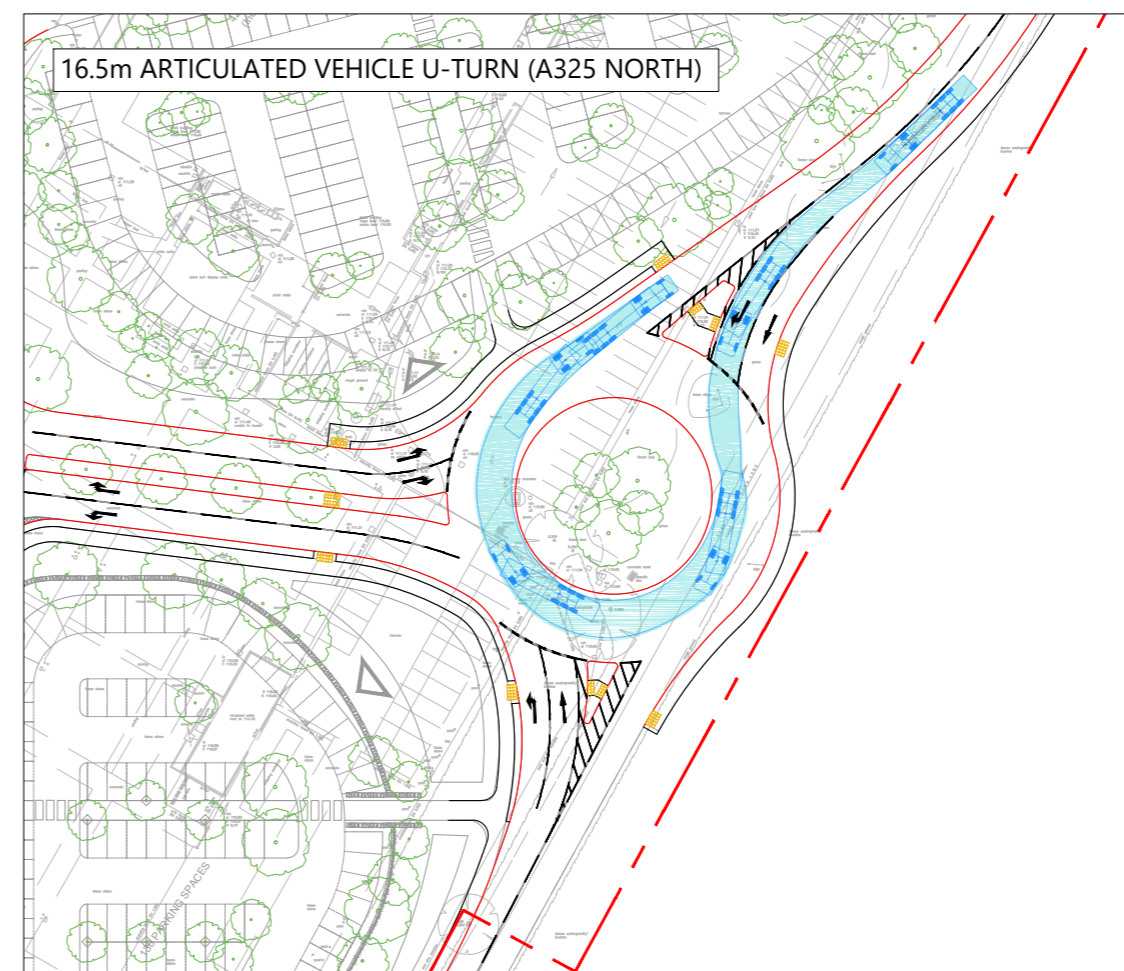
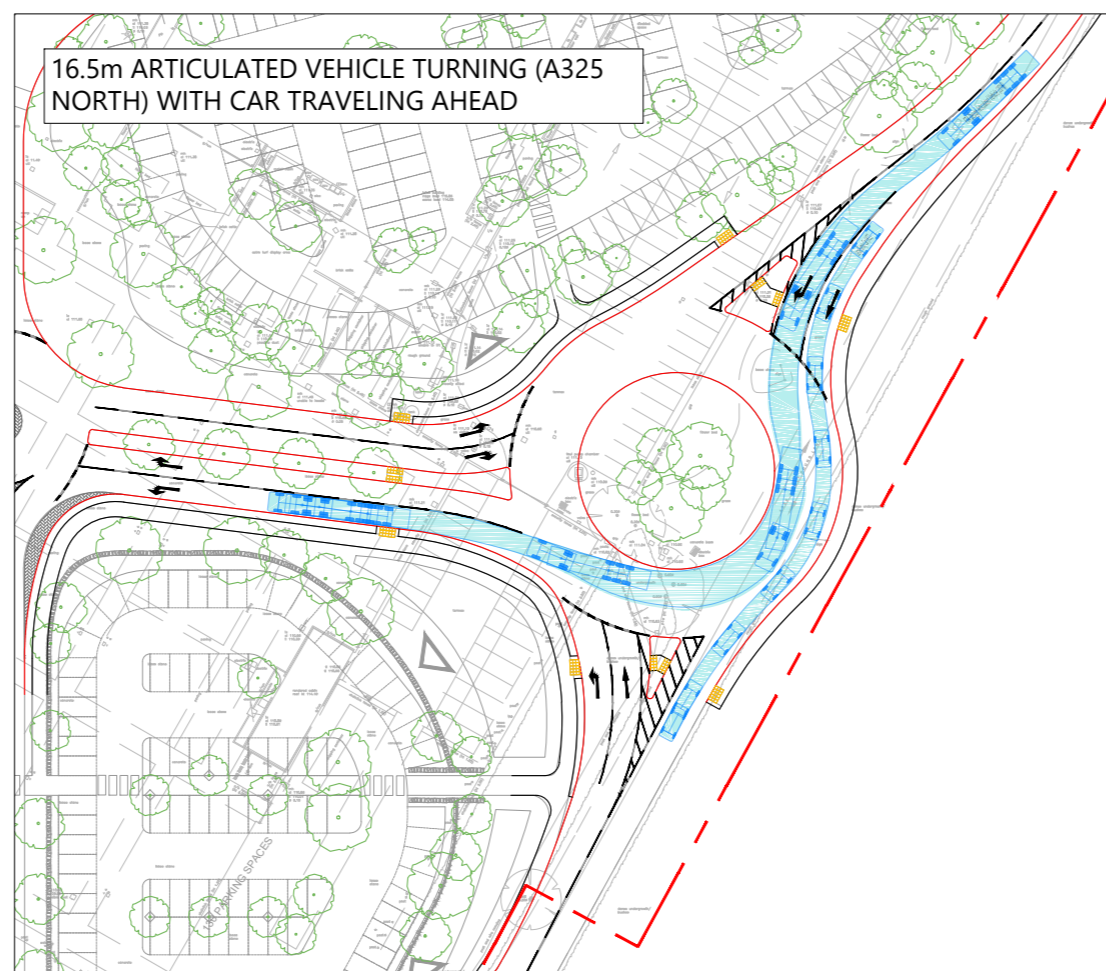
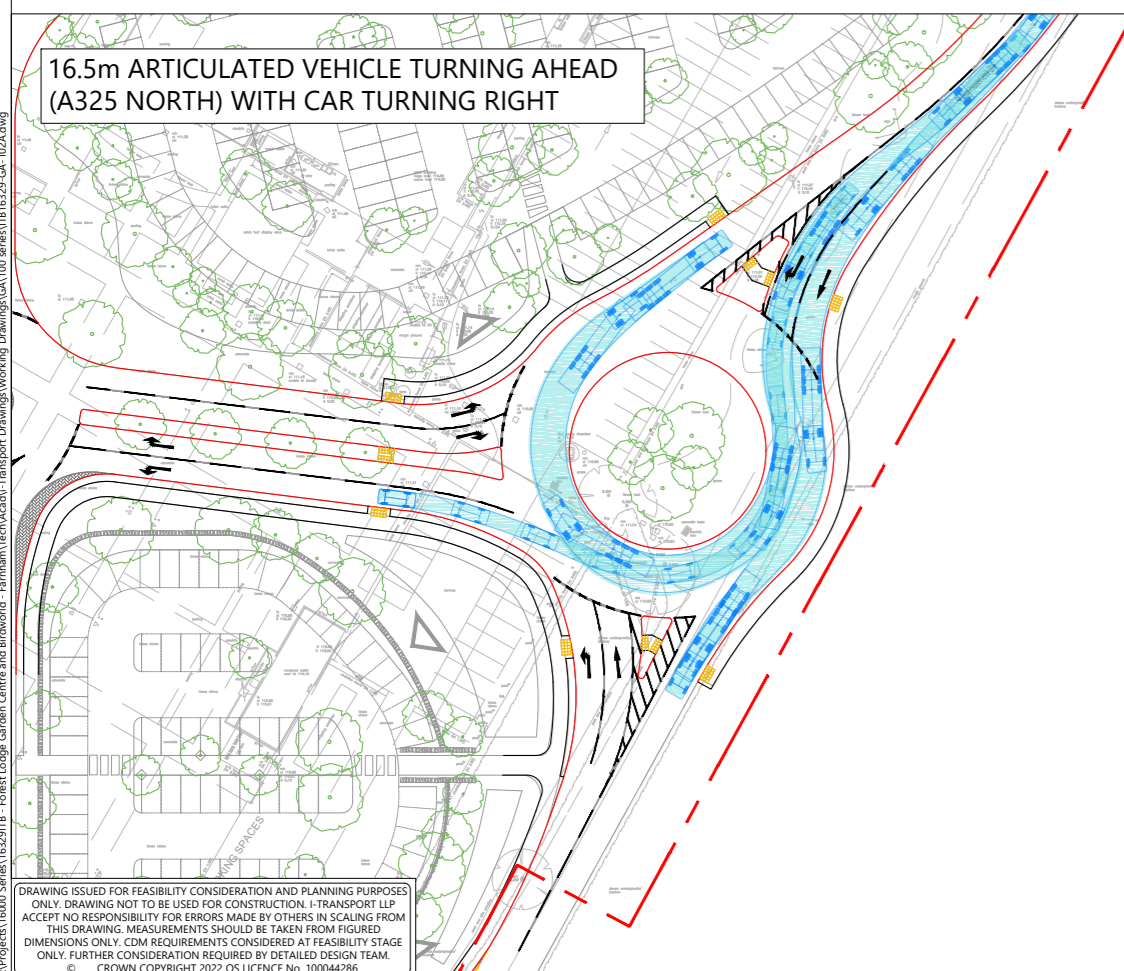
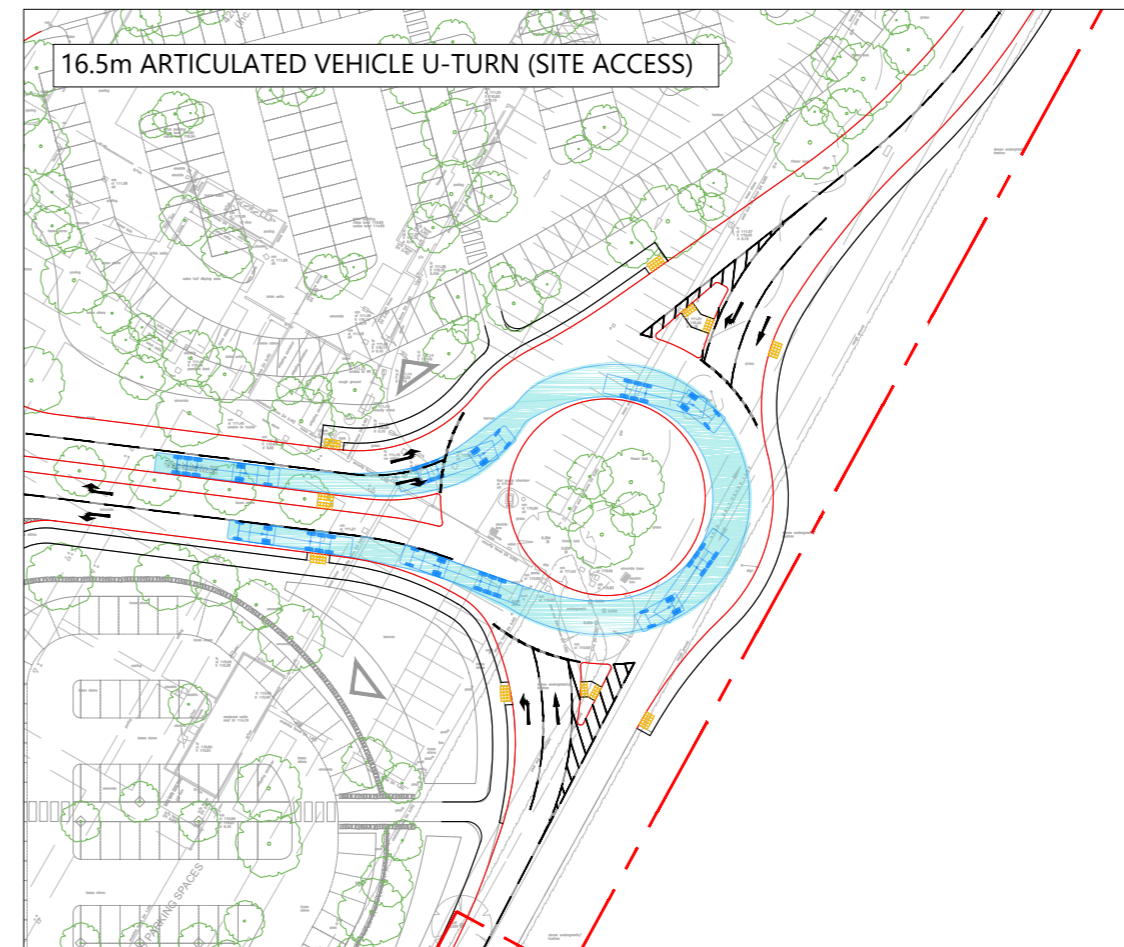
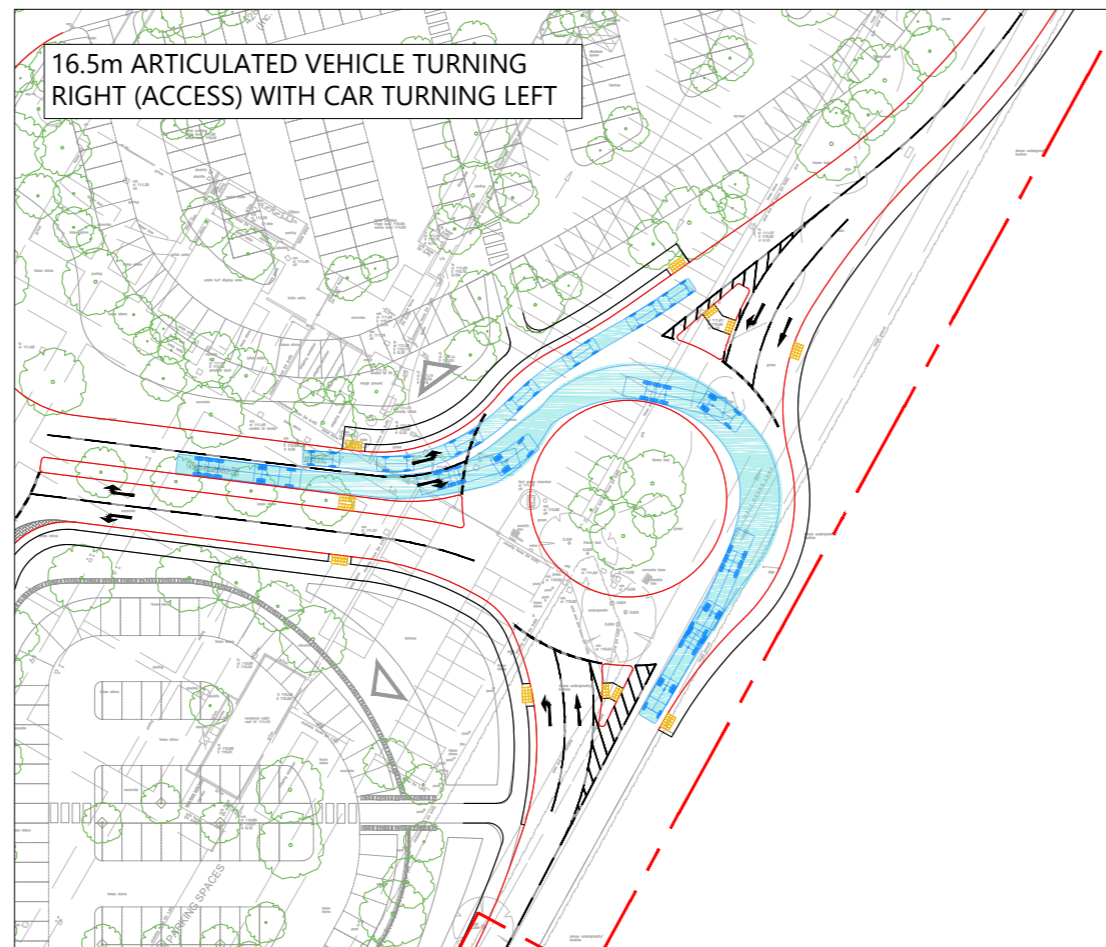
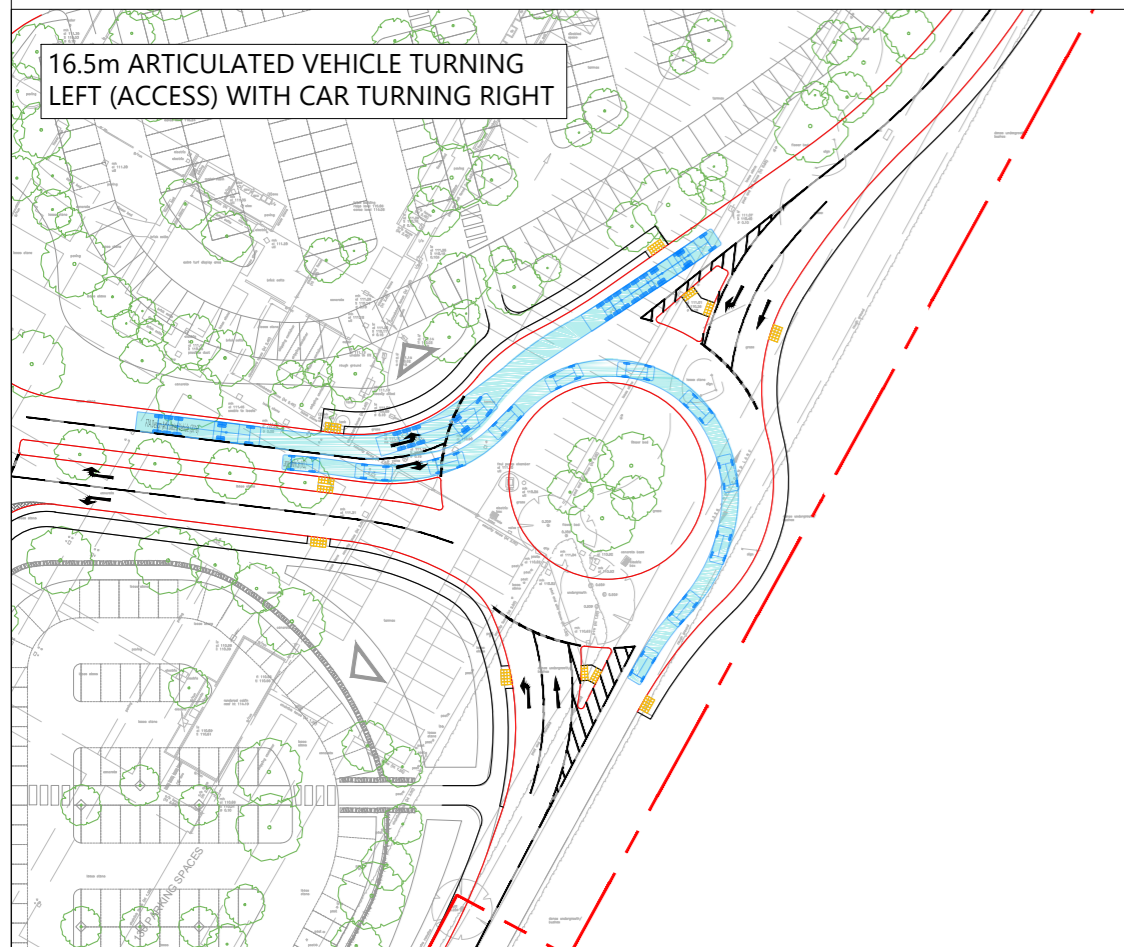
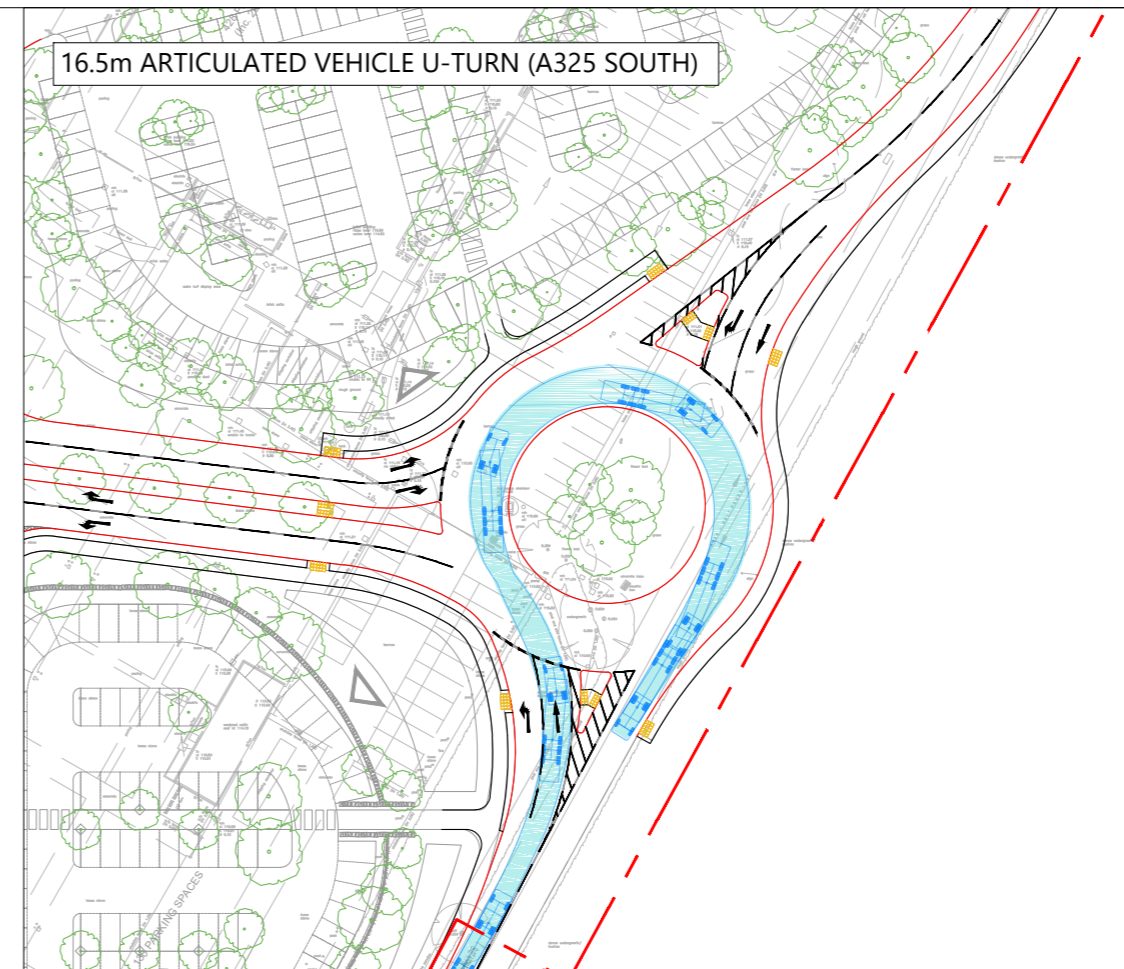
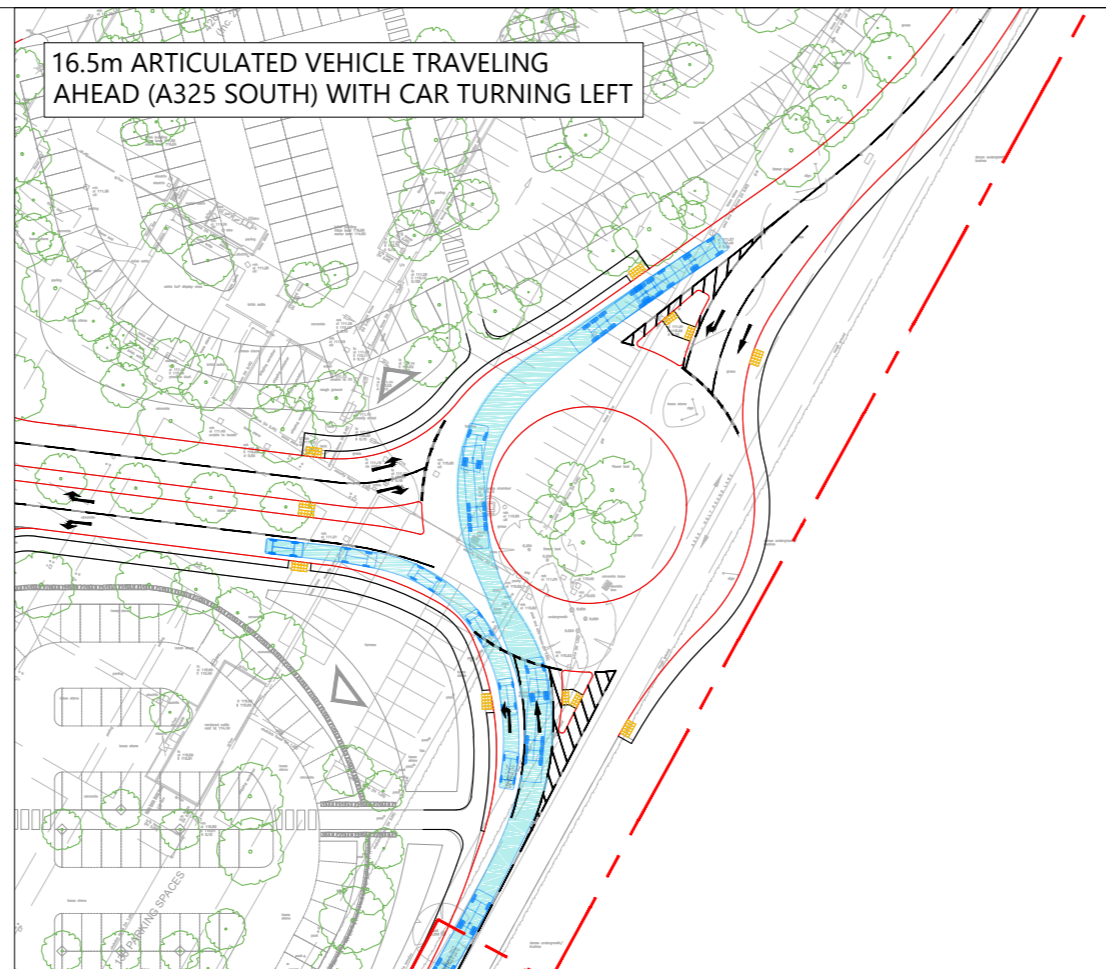
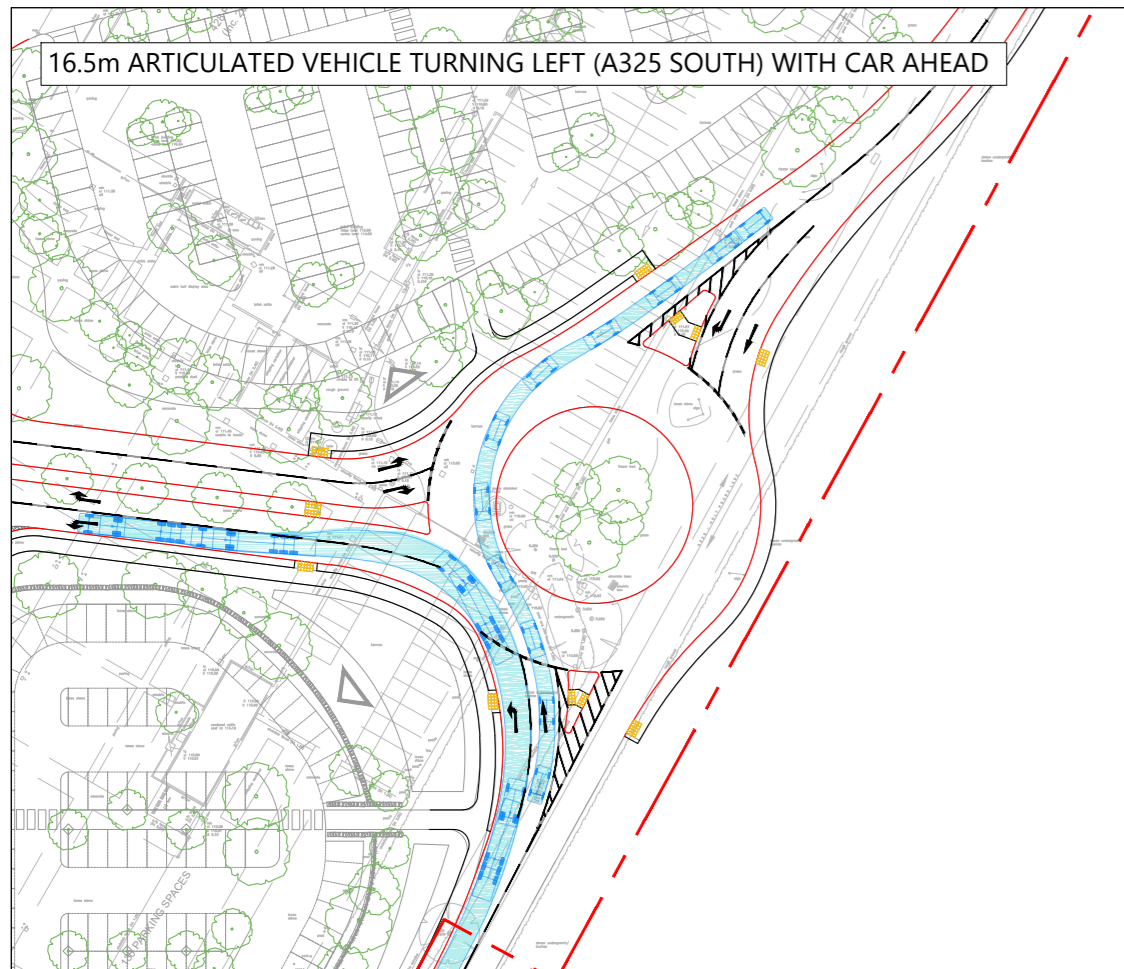


REV	DATE	BY	DESCRIPTION	CHK	APP	PROJECT	CLIENT
A	11.10.23	MC	SITE LAYOUT REVISED	MC	SAW	FOR INFORMATION	HASKINS FARNHAM LTD

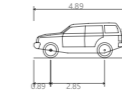
PROPOSED THREE ARM ROUNDABOUT ACCESS ARRANGEMENTS

PROJECT No: ITB16329
 CLIENT: HASKINS FARNHAM LTD

DRAWN	CHECKED	APPROVED
MC	MC	SAW
PROJECT No:	SCALE @ A1:	DATE:
ITB16329	AS SHOWN	13.06.23
DRAWING No:	REV:	
ITB16329-GA-100	A	



FTA Design Articulated Vehicle (2016)
 Overall Length: 16.480m
 Overall Width: 2.550m
 Overall Body Height: 3.870m
 Min Body Ground Clearance: 0.315m
 Max Track Width: 2.470m
 Lock to lock time: 3.90s
 Kerb to Kerb Turning Radius: 6.600m



Large Family Car (HCC)
 Overall Length: 4.890m
 Overall Width: 1.840m
 Overall Body Height: 1.550m
 Min Body Ground Clearance: 0.356m
 Track Width: 1.340m
 Lock to lock time: 4.0s
 Kerb to Kerb Turning Radius: 5.900m

REV	DATE	BY	DESCRIPTION	CHK	APP
A	11.10.23	MC	SITE LAYOUT REVISED	MC	SAW

STATUS: FOR INFORMATION



The Square, Basing View,
 Basingstoke, Hampshire, RG21 4EB
 www.i-transport.co.uk
 Tel: 01256 637940

TITLE: PROPOSED THREE ARM ROUNDABOUT ACCESS ARRANGEMENTS
 VEHICLE SWEEP PATH ANALYSIS

PROJECT: FOREST LODGE GARDEN CENTRE

CLIENT: HASKINS FARNHAM LTD

DRAWN: MC	CHECKED: MC	APPROVED: SAW
PROJECT No: ITB16329	SCALE @ A2: 1:1000	DATE: 12.06.23
DRAWING No: ITB16329-GA-102		REV: A

Drawing issued for feasibility consideration and planning purposes only. Drawing not to be used for construction. i-Transport LLP accept no responsibility for errors made by others in scaling from this drawing. Measurements should be taken from figured dimensions only. CDM requirements considered at feasibility stage only. Further consideration required by detailed design team. © i-Transport Copyright 2022. All rights reserved. No. 10004306