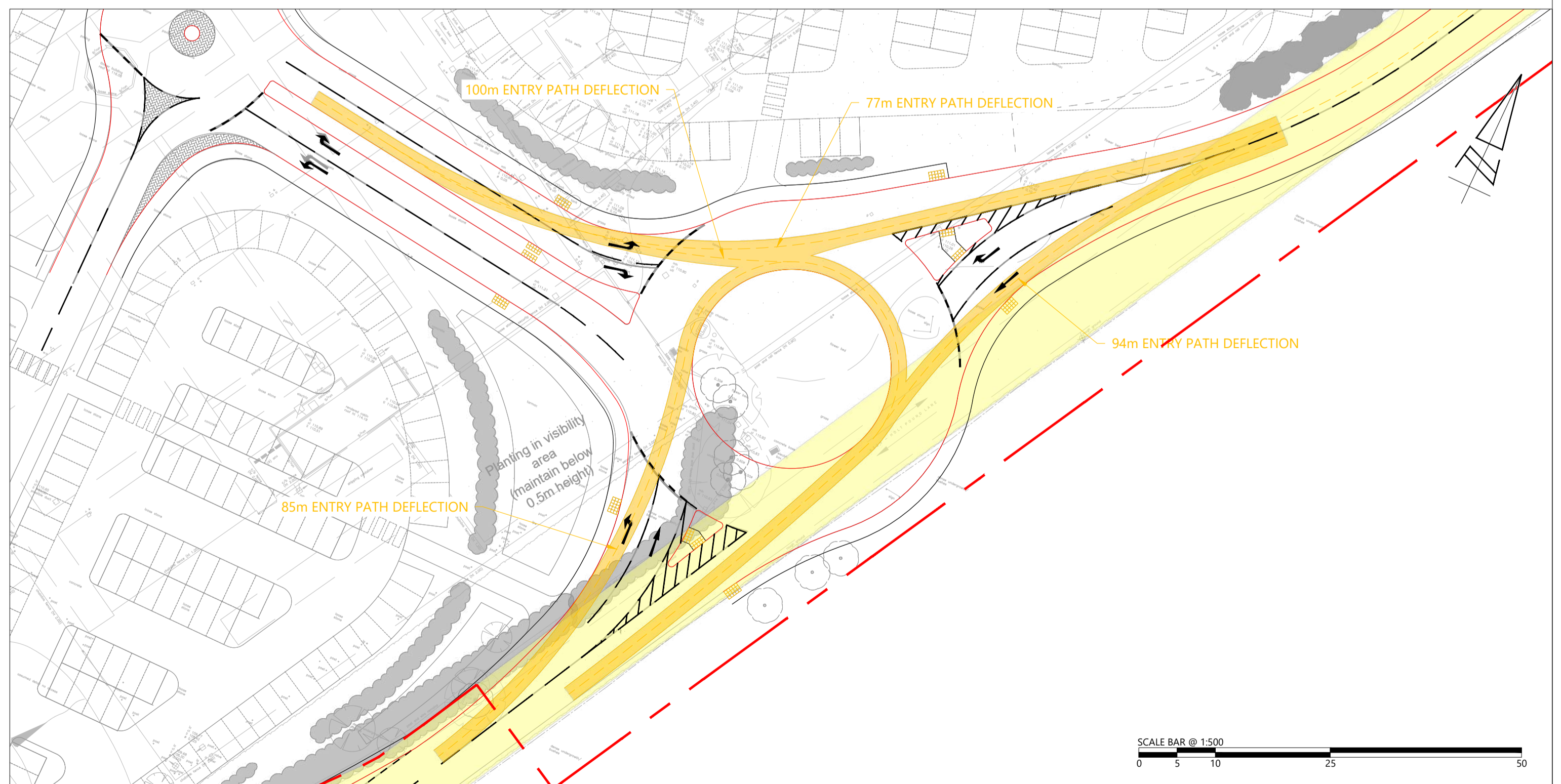
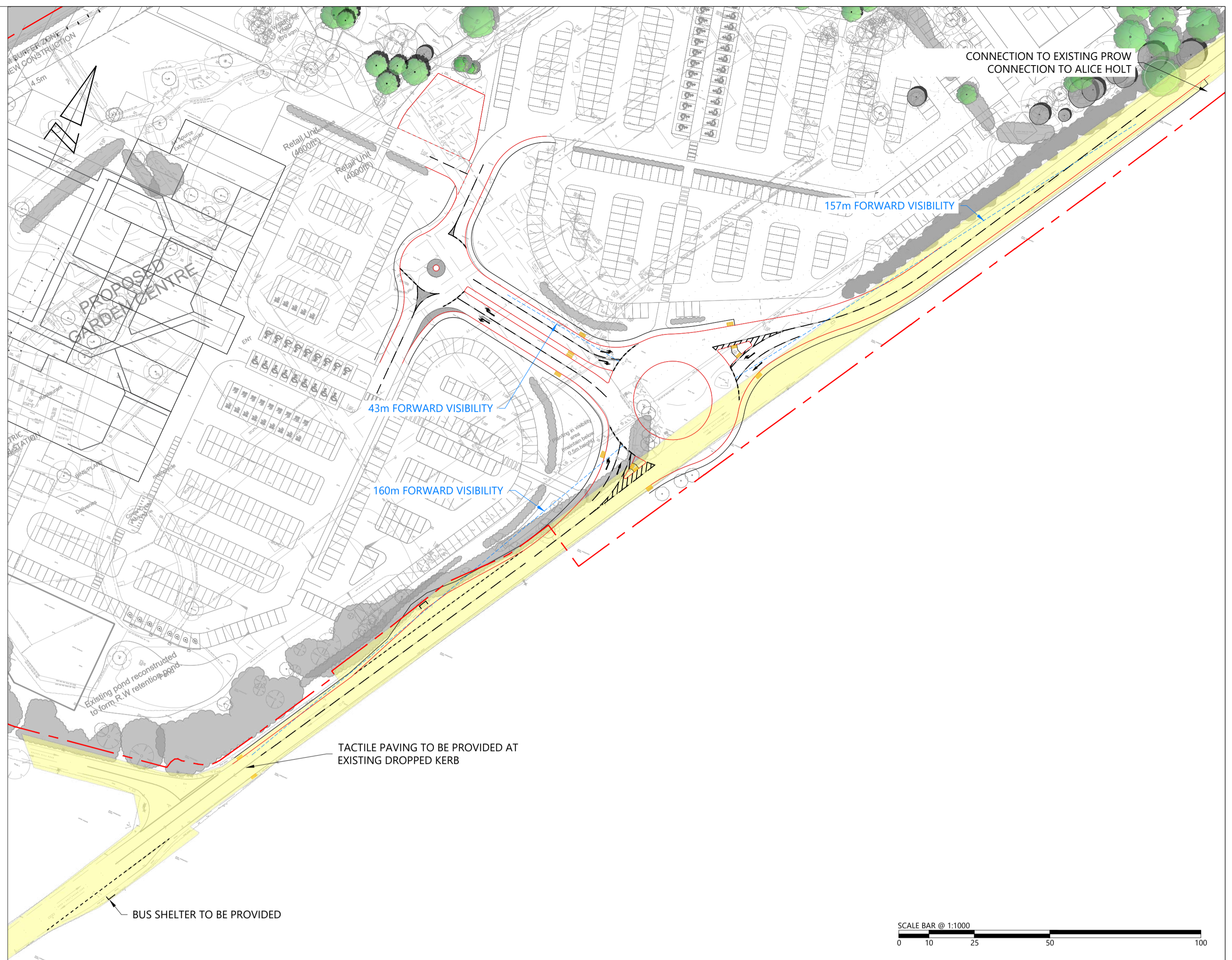
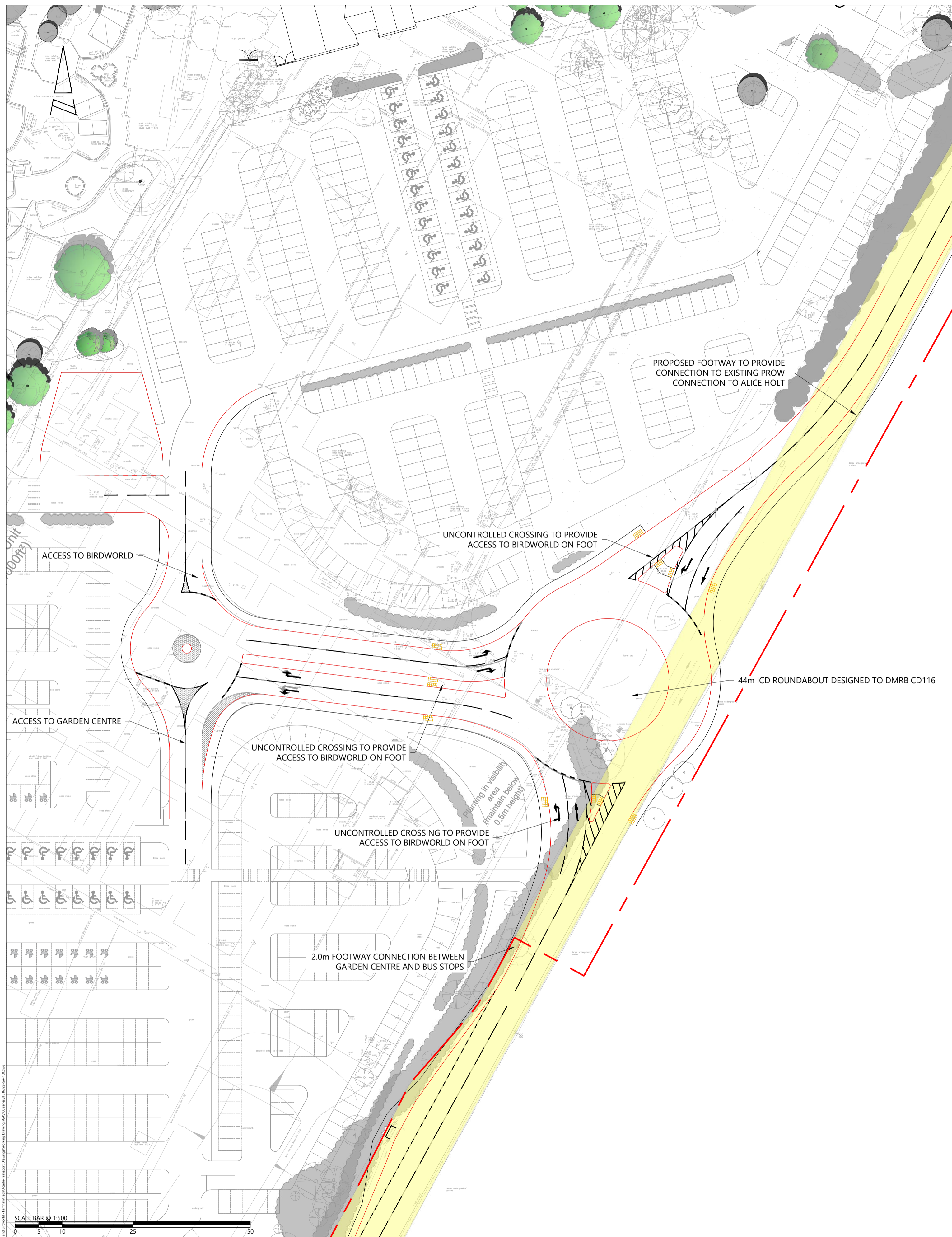


DRAWINGS



The Square, Basing View,
Basingstoke, Hampshire, RG21 4EB
www.i-transport.co.uk

Tel: 01256 637940

WARNING: THESE DRAWINGS ARE FOR INFORMATION ONLY AND SHOULD NOT BE USED FOR CONSTRUCTION. TRANSPORT I/P AND ITS CONSULTANTS SHALL NOT BE RESPONSIBLE FOR ANY CONSTRUCTION DEFECTS OR DAMAGE TO PROPERTY OR PERSONS ARISING FROM ANY CONSTRUCTION WORK. THE USER SHALL BE RESPONSIBLE FOR OBTAINING ALL NECESSARY PERMISSIONS AND CONSENTS FROM ALL APPLICABLE AUTHORITIES. THE USER SHALL BE RESPONSIBLE FOR OBTAINING ALL NECESSARY PERMISSIONS AND CONSENTS FROM ALL APPLICABLE AUTHORITIES. THE USER SHALL BE RESPONSIBLE FOR OBTAINING ALL NECESSARY PERMISSIONS AND CONSENTS FROM ALL APPLICABLE AUTHORITIES.

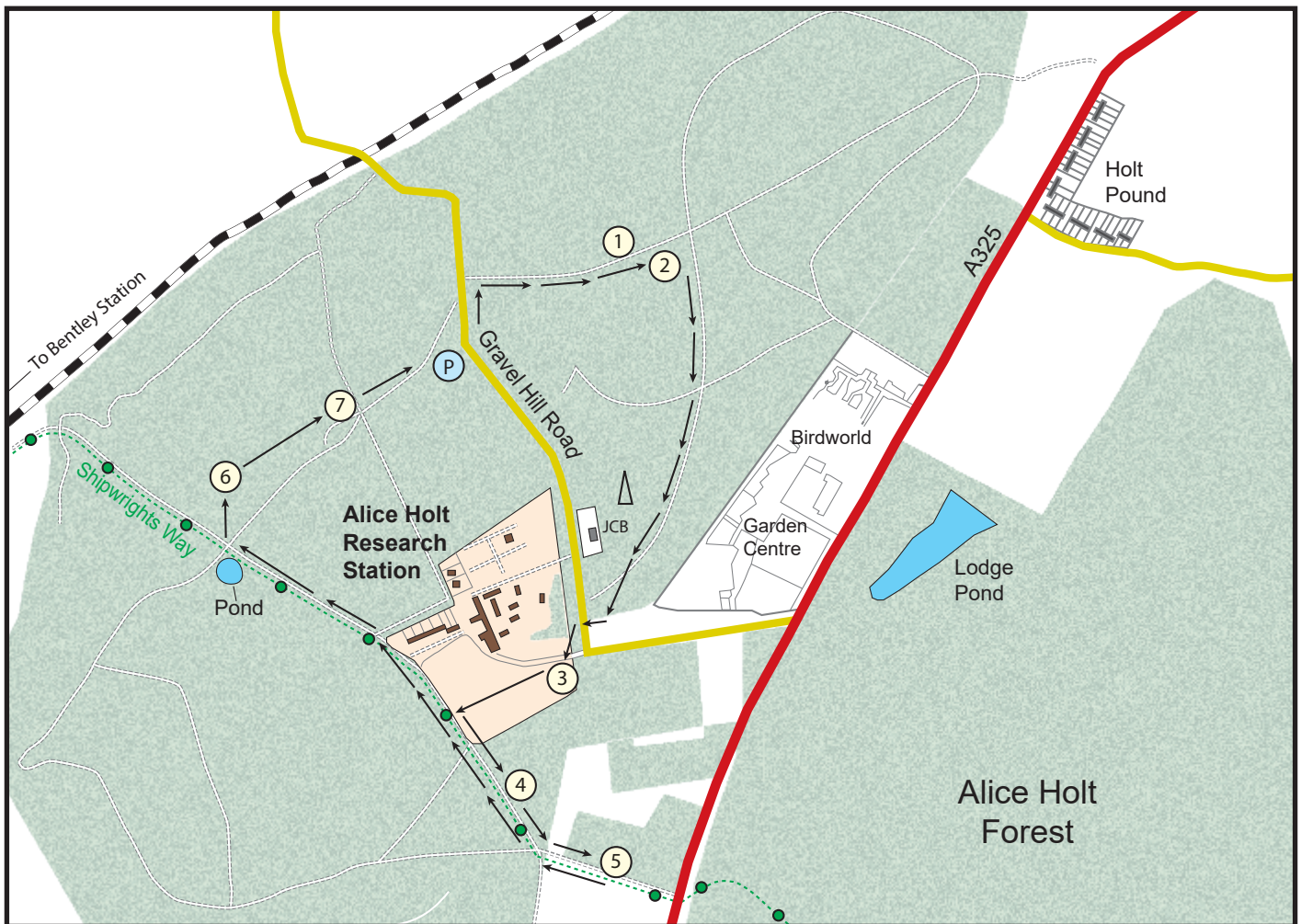
KEY:

- HIGHWAY BOUNDARY BASED ON OS MAPPING
- SITE BOUNDARY

STATUS	DESCRIPTION	CHK	APP	PROJECT	TITLE	CLIENT	DATE	REV
FOR INFORMATION	FOR INFORMATION			FOREST LODGE GARDEN CENTRE	PROPOSED THREE ARM ROUNDABOUT ACCESS ARRANGEMENTS	HASKINS FARNHAM LTD	13.06.23	-

PROJECT No:	SCALE @ A1:	APPROVED:
ITB18700	AS SHOWN	SAW
DRAWING No:	DATE:	
ITB16329-GA-100	13.06.23	

APPENDIX A. FOREST RESEARCH ADAPTATION
TRAIL



Alice Holt Climate Change Adaptation Trail Guide

Start: Alice Holt Arboretum car park

Post code: GU10 4LQ (nearest)

Distance: 3 miles with 7 marked stops

Terrain: Wide forest roads which may cross uneven patches of mud and puddles

In south-east England, climate change has already had an impact on trees and woodland and will continue to do so. Oak now comes into leaf nearly a month earlier than it did in the 1950s. In future, this area is projected to become warmer, with more frequent extreme weather events, such as hotter, drier summers and drought episodes.

The trail demonstrates a range of different adaptation measures that can be used to better prepare our woodlands for change and future challenges. The first two stops are managed to show different ways in which Alice Holt Forest is being adapted. The other stops are 20th century research trials that are of fresh interest in light of climate change.

If you're interested in forestry and perhaps own or manage woodland, the accompanying **online worksheet** provides more detail.

Stop 1 Can we increase resilience using species pairing mixtures?

Mature Corsican pine (*Pinus nigra*), underplanted in 2017/18 with two broadleaved species, of different drought tolerances, to meet woodland restoration objectives.

Corsican pine has an uncertain future due to its vulnerability to drought and disease damage. The current mature stand is growing on sandy soil and has been underplanted with either hornbeam (*Carpinus betulus*) or beech (*Fagus sylvatica*). Hornbeam is expected to perform better than beech in future because it has a higher drought tolerance.

Stop 2 Can we reduce drought impact by thinning?

Young Corsican pines were thinned in 2018 at two different intensities, in two adjacent sub-compartments, to try to extend the expected yield of this stand. Hotter, drier summers will increase competition for water but there should be less drought stress in trees where heavier thinning has been undertaken.

Stop 3 Can we encourage natural selection using direct seeding?

A trial plot of 10 different tree species was sown, rather than planted, in 2009 using different types of typical farm machinery. The resulting woodland on former agricultural land established quickly in three years.

Direct seeding can result in many more seedlings compared with planting, which may encourage adaptation through natural selection. Fencing to protect seed and seedlings was critical for establishment. Correct ground preparation and weeding were also important. This stop shows that direct seeding can be successful, and strong, upright stems are encouraged by the high density of seedlings.

Stop 4 What are our options to address changing fire risk?

A trial of coast redwood (*Sequoia sempervirens*) involved testing the growth and survival of plants raised from seed from different origins. Coast redwood grows well in a British climate and is available in many nurseries. The species can reach 20 metres in 20 years and is highly valued for its timber qualities. It is lightweight, shows resistance to decay and is resilient to fire.

However, it does show some sensitivity to frost when young. Coast redwood is now being considered as part of Forestry Commission England's diversification strategy.

Stop 5 What can species trials tell us about future risks? Leyland cypress clone bank

This windblown stand of different clones of Leyland cypress demonstrates the importance of trial plots to highlight potential issues with novel species before they're grown commercially. Such trials are important given that extreme weather events are expected to increase in future.

This species was found to be susceptible to wind throw. The stand survived high winds in 1987 but was blown over during a storm in 2012/13. The trial has been abandoned.

Stop 6 What alternative species might suit future conditions?

(Optional – skip if you're short on time or have access difficulties.)

This clone bank of western red cedar (*Thuja plicata*) was planted in 1964 from cuttings taken from superior specimens in forests across the UK. Western red cedar is a conifer that has potential for wider use in forestry for timber. Here, however, their dense foliage has blocked light from reaching the forest floor and so there is low potential for ground flora and associated wildlife. But alternative planting strategies could be considered to improve potential for wildlife. The stand established well on a north-facing slope with no thinning and today serves as a source of genetic material for future breeding and selection programmes.

Stop 7 Understanding species diversification

The arboretum and rare tree collection highlights how species diversification and valuable conservation work are important in understanding threats and opportunities from the changing climate. Volunteers from the Alice Holt Community Forum are helping to conserve rare species and identify those that may tolerate future climatic conditions. aliceholtforum.org.uk/ahcf/arboretum/

Stop 8 (Optional) Mixtures of broadleaved species

Once you've completed the trail, there is one more stop a few minutes' drive away in Alice Holt Forest Park. Leave your car in the 'Beech' Forest Centre car park and follow the **Easy Access Discovery Trail** along Orchard Ride. Take the first turning on your left to follow a mile-long loop.

This stop shows the performance of natural beech regeneration (where trees develop from seeds that fall and germinate *in situ*) alongside an area underplanted with UK oaks and one underplanted with oaks from France. Trees from southern areas may perform better in future but we need to find out more about how they will cope and grow in different climatic conditions, such as in changing rainfall patterns here at Alice Holt.

What did you think of the stops on the trail and the questions they raise? If you're adapting the woodlands you manage to climate change, we'd love to hear about your results. You can share your thoughts and get in touch with us [@Forest_Research](https://twitter.com/Forest_Research) using [#AdaptAH](https://twitter.com/AdaptAH).

This trail has been produced by Forest Research in collaboration with Forestry Commission England.

Further information is available at www.forestresearch.gov.uk or you can send us an email at adaptah@forestry.gsi.gov.uk



Forestry Commission

APPENDIX B. BENTLEY STATION FOOTBRIDGE
PROPOSALS

10th August 2021

Alice Holt & Buckthorne Oak Level Crossing Closure (Bentley Station)

Project Overview



Objectives of the scheme

Network Rail has a strict statutory duty to run a safe railway network and eliminate risks from it.

Level crossings are one of the key sources of catastrophic risk and in order to improve public safety, Network Rail have a funded strategy to reduce this risk.

Alice Holt and Buckthorne Oak are high risk footpath level crossings located in the village of Bentley in Hampshire. Both routes serve as public rights of way routes within our strategy.

Both crossings have significant and irremovable safety issues e.g. restricted sighting of trains currently mitigated by trains sounding their horns.



Key Driver

The key driver for introducing change at this location are:



Safety

Each Level Crossing on the route is associated with a risk score. Closing both of the level crossings are anticipated to remove the safety risk at Bentley.

Scope

- Stopping up and closure of 2 footpath level crossings: Alice Holt and Buckthorne Oak
- Provision of a pedestrian diversion via the installation of an Access for All style footbridge at Bentley Station
- Decommissioning of the existing station footbridge

The project has recently finished early design work and is planning on commencing more detailed design in October 2021, which is followed by delivery work.



Figure 1: Alice Holt Level Crossing (left) and Buckthorne Oak Level Crossing (right)

Interface with Public Right of Ways

Both crossings serve public footpaths 38, 44 and 55 respectively.

Network Rail's proposal provides for extinguishment of footpath 55 and diversion of 38 and 44 onto the new footbridge.

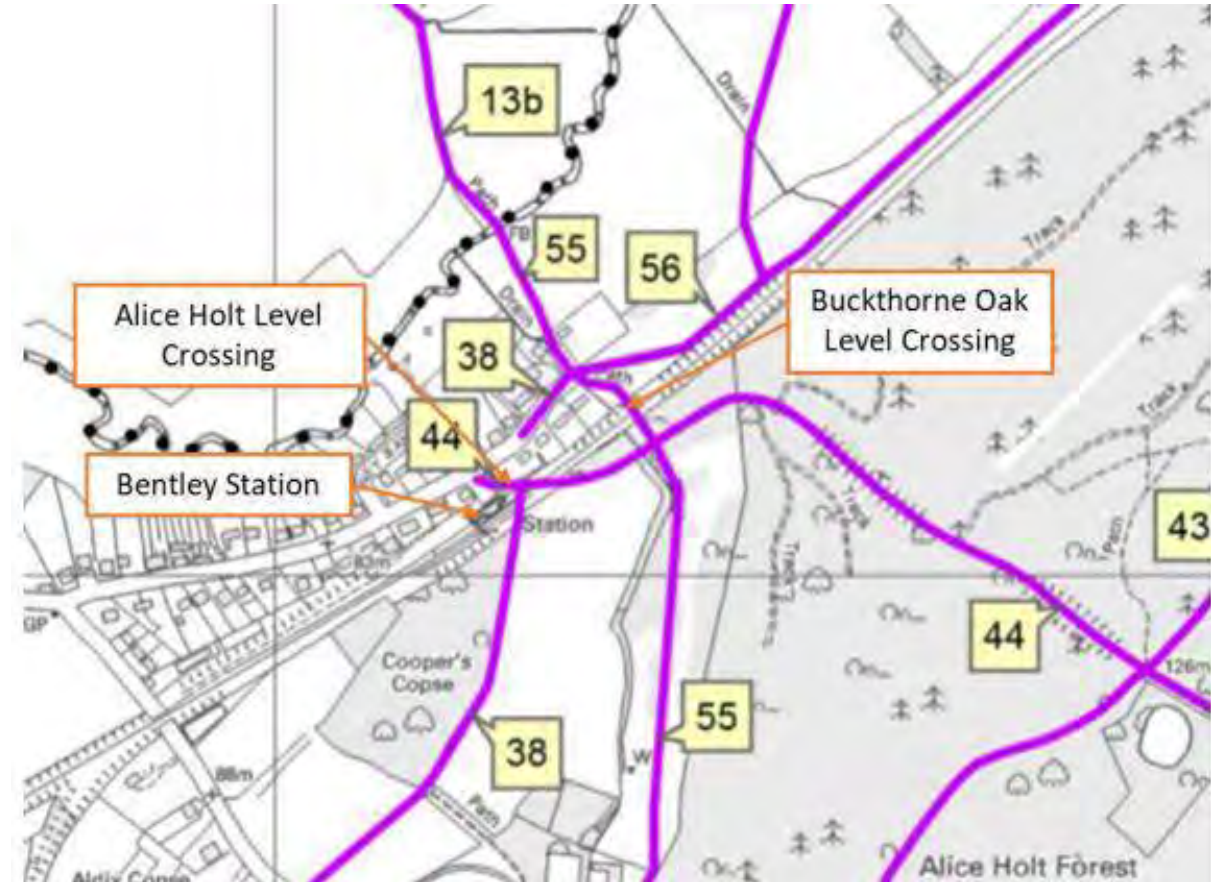


Figure 2: Definite Map of PROW 2010. Hampshire County Council (Snapshot)



Virtual Site Visit





Bentley Station



Alice Holt Level Crossing



Buckthorne Oak Level Crossing





Design Proposal



New Footbridge at Bentley Station

The new station footbridge will be located approximately 40m from the existing pedestrian footbridge and be located just south of the existing Alice Holt level crossing.

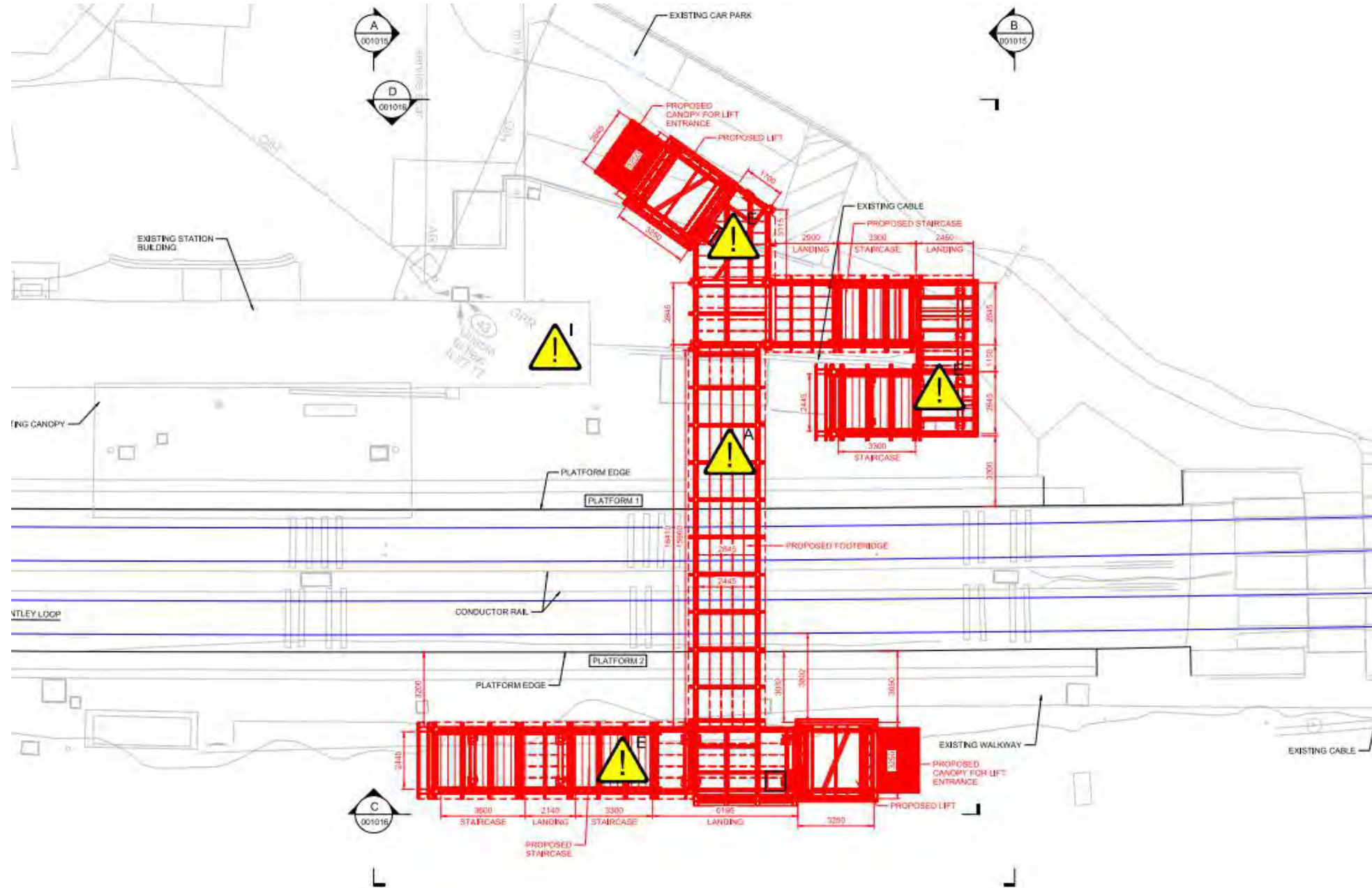
2 staircases are proposed, one for each Platform to allow access to the proposed footbridge.

It will be a stepped structure.

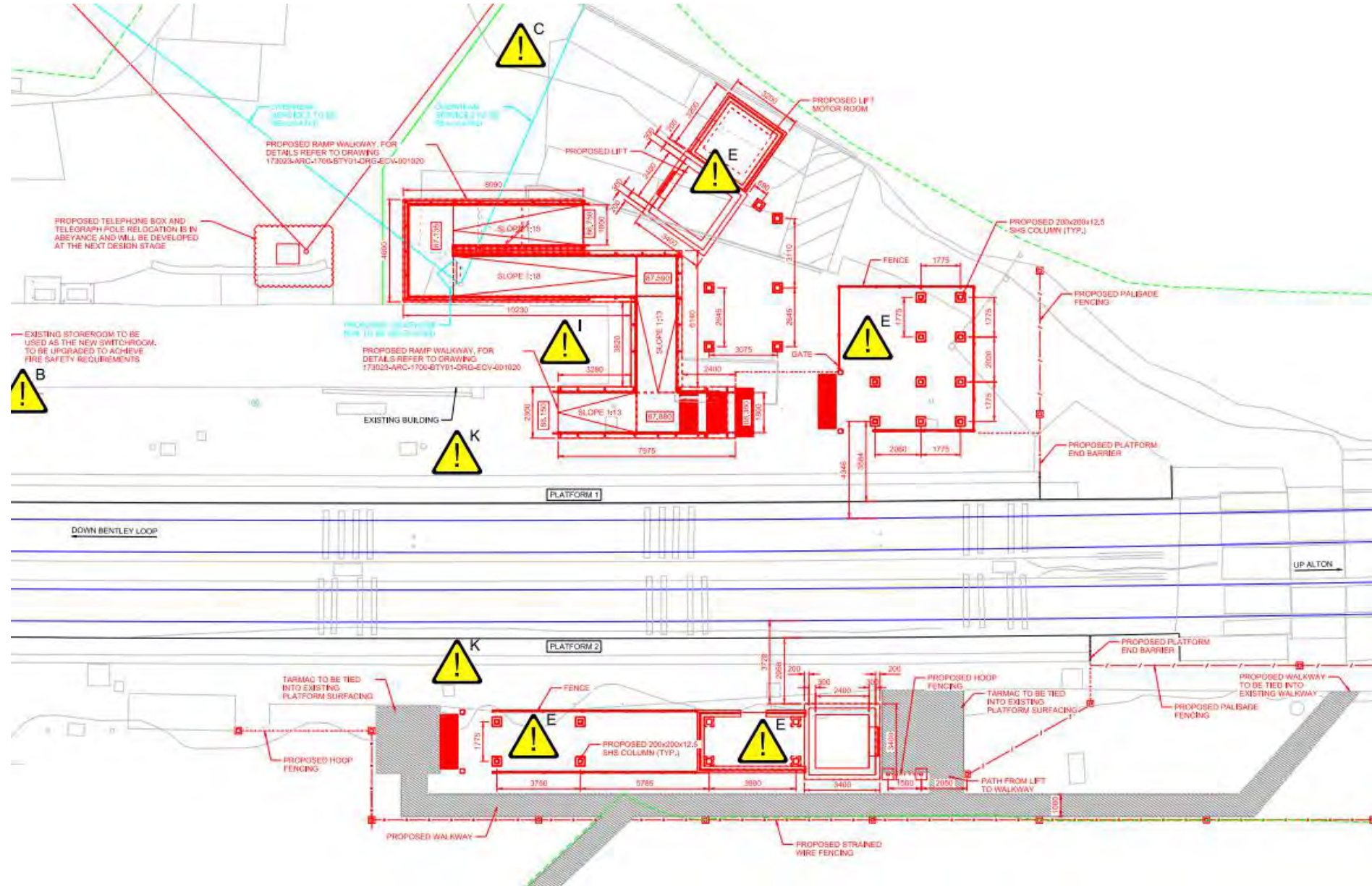
To accommodate disabled/mobility impaired use, 2 lifts(16-person capacity each) will be provided. The lifts will be through lifts to provide simplified access for persons with reduced mobility (PRM).

A new access ramp will be constructed to the North East next to the station building and adjacent to the new structure to provide access to Platform 1.

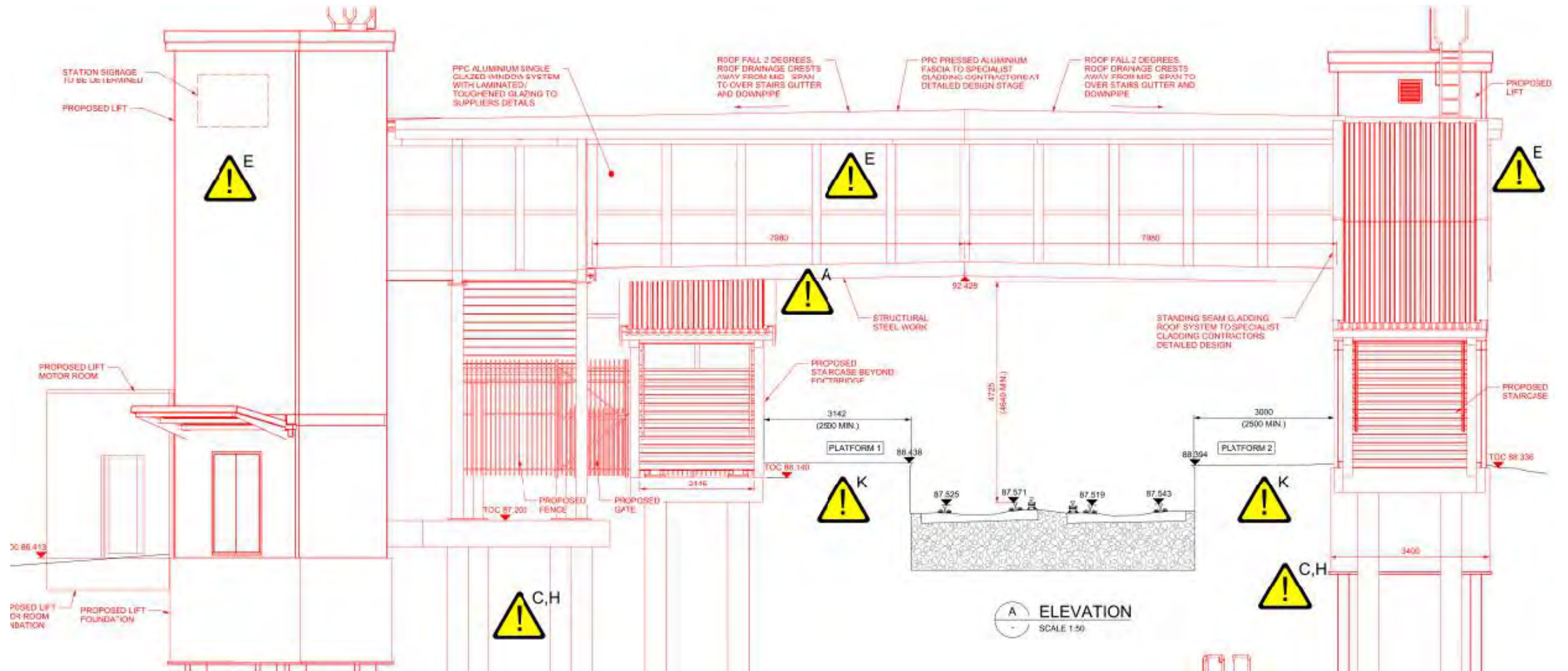
Footbridge Level



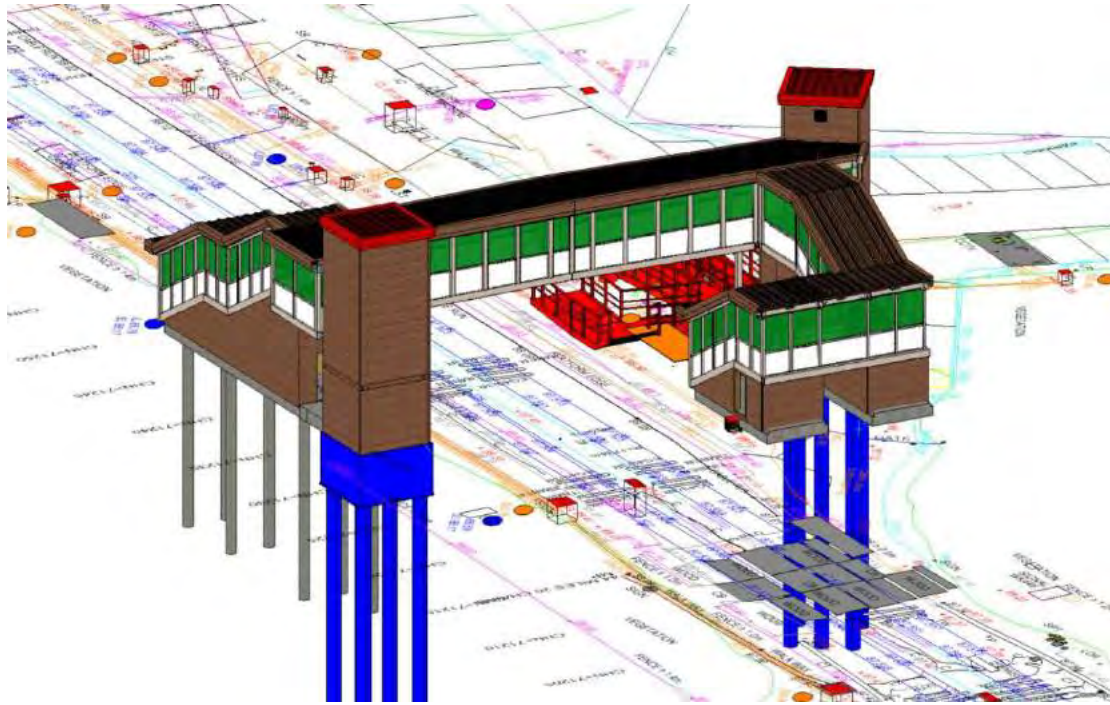
Ground Level



Elevation looking towards Alice Holt Level Crossing



3D Images



Timeline

Please note that these dates may be subject to change when the project progresses through detailed design. Network Rail will continue to identify opportunities to reduce the programme.

Detailed Design Completion	April 2022
Start on Site	July 2022
Open Footbridge	April 2023
Removal of Existing Footbridge	April 2023
Finish of Site	April/May 2023

Impact During Construction

The existing footbridge and station building will remain in service and operational during construction.

The level crossings will remain in use until the legal process for stopping up has concluded.

There may be a requirement to close pedestrian access to the level crossing during mid week nights (when trains aren't running)

There will be a requirement to utilise areas of the station car park for construction, however access into the station will be maintained and these will be in non operational hours (trains not running)



Environmental Considerations

The station is directly adjacent to a National Park boarder which is South Downs National park and Sites of Special Scientific Interest Bentley Station Meadow SSSI which is located 140m east of the station.

A Preliminary Ecological Appraisal has been undertaken and confirmed that the works would not encroach onto the SSSI and would be within the immediate station boundary, this would mean that there would be no direct impact towards the Bentley Station Meadows SSSI.

The project will follow the mitigation measures which have been provided by the ecologist i.e prior to any vegetation clearances a hand search and visual inspection will be undertaken to confirm no evidence of dormice.



Results from Census

Network Rail have undertaken a census in July 2021 to understand the composition of level crossing users.

	Grand Total	Average total per day	Percentage
Elderly	0	0.0	0.0%
Mobility impaired	0	0.0	0.0%
People with prams	10	1.1	0.8%
Cyclists	430	47.8	33.7%
Encumbered	0	0.0	0.0%
Wearing 'hoodies'	27	3.0	2.1%
Dog walking (on lead)	249	27.7	19.5%
Dog walking (off lead)	20	2.2	1.6%
Children (accompanied by adults)	22	2.4	1.7%
Children (unaccompanied alone)	0	0.0	0.0%
Children (group)	4	0.4	0.3%
Student (Lone)	2	0.2	0.2%
Students (group)	0	0.0	0.0%
Adult (group)	410	45.6	32.1%
Adult Female (Lone)	102	11.3	8.0%

		Grand Total	Average total per day	Percentage
Station Users	Pedestrian	251.0	27.9	20%
	Cyclist	27	3.0	2%
Non-Station Users	Pedestrian	576	64.0	45%
	Cyclist	422	46.9	33%

Further Discussions Points

The current proposal of the footbridge is to be covered/enclosed, however there is a time and cost saving opportunity to have an uncovered bridge, what are the Parish Councils views on this?

How would the Parish Council like to be communicated with during works?

Are there any local events that we need to be aware of in the area?

Would you recommend an approach to letting the residents in the area know about the scheme?

APPENDIX E. Accessibility Index Calculations

BREEAM 2018 Tra01/02 Accessibility Index calculator



Using the drop down boxes make the relevant selections and press the 'Select' button

Building type

No. nodes required

Select

NODE 1 - Holt Pound Birdworld (NE-bound)

Public transport type	Bus									
Distance to node (m)	14									
Average frequency per hour	Service 1	Service 2	Service 3	Service 4	Service 5	Service 6	Service 7	Service 8	Service 9	Service 10
	0.08	1	0.08							

NODE 2 - Holt Pound Birdworld (SW-bound)

Public transport type	Bus									
Distance to node (m)	21									
Average frequency per hour	Service 1	Service 2	Service 3	Service 4	Service 5	Service 6	Service 7	Service 8	Service 9	Service 10
	0.08	1	0.08							

NODE 3 - Holt Pound, adjacent to Gravel Hill Road

Public transport type	Bus									
Distance to node (m)	455									
Average frequency per hour	Service 1	Service 2	Service 3	Service 4	Service 5	Service 6	Service 7	Service 8	Service 9	Service 10
	0.08	1	0.08							

NODE 4 - Holt Pound, opposite Gravel Hill Road

Public transport type	Bus									
Distance to node (m)	595									
Average frequency per hour	Service 1	Service 2	Service 3	Service 4	Service 5	Service 6	Service 7	Service 8	Service 9	Service 10
	0.08	1	0.08							

NODE 5

Public transport type										
Distance to node (m)										
Average frequency per hour	Service 1	Service 2	Service 3	Service 4	Service 5	Service 6	Service 7	Service 8	Service 9	Service 10

Accessibility Index	2.49
---------------------	------

BREEAM 2018 Tra01/02 Accessibility Index calculator



Using the drop down boxes make the relevant selections and press the 'Select' button

Building type

No. nodes required

Select

NODE 1 - Holt Pound Birdworld (NE-bound)

Public transport type	Bus									
Distance to node (m)	230									
Average frequency per hour	Service 1	Service 2	Service 3	Service 4	Service 5	Service 6	Service 7	Service 8	Service 9	Service 10
	0.08	1	0.08							

NODE 2 - Holt Pound Birdworld (SW-bound)

Public transport type	Bus									
Distance to node (m)	229									
Average frequency per hour	Service 1	Service 2	Service 3	Service 4	Service 5	Service 6	Service 7	Service 8	Service 9	Service 10
	0.08	1	0.08							

NODE 3 - Holt Pound, adjacent to Gravel Hill Road

Public transport type	Bus									
Distance to node (m)	208									
Average frequency per hour	Service 1	Service 2	Service 3	Service 4	Service 5	Service 6	Service 7	Service 8	Service 9	Service 10
	0.08	1	0.08							

NODE 4 - Holt Pound, opposite Gravel Hill Road

Public transport type	Bus									
Distance to node (m)	350									
Average frequency per hour	Service 1	Service 2	Service 3	Service 4	Service 5	Service 6	Service 7	Service 8	Service 9	Service 10
	0.08	1	0.08							

NODE 5

Public transport type										
Distance to node (m)										
Average frequency per hour	Service 1	Service 2	Service 3	Service 4	Service 5	Service 6	Service 7	Service 8	Service 9	Service 10

Accessibility Index	2.46
---------------------	------

BREEAM 2018 Tra01/02 Accessibility Index calculator



Using the drop down boxes make the relevant selections and press the 'Select' button

Building type

No. nodes required

Select

NODE 1 - Holt Pound Birdworld (NE-bound)

Public transport type	Bus									
Distance to node (m)	350									
Average frequency per hour	Service 1	Service 2	Service 3	Service 4	Service 5	Service 6	Service 7	Service 8	Service 9	Service 10
	0.08	1	0.08							

NODE 2 - Holt Pound Birdworld (SW-bound)

Public transport type	Bus									
Distance to node (m)	343									
Average frequency per hour	Service 1	Service 2	Service 3	Service 4	Service 5	Service 6	Service 7	Service 8	Service 9	Service 10
	0.08	1	0.08							

NODE 3 - Holt Pound, adjacent to Gravel Hill Road

Public transport type	Bus									
Distance to node (m)	97									
Average frequency per hour	Service 1	Service 2	Service 3	Service 4	Service 5	Service 6	Service 7	Service 8	Service 9	Service 10
	0.08	1	0.08							

NODE 4 - Holt Pound, opposite Gravel Hill Road

Public transport type	Bus									
Distance to node (m)	10									
Average frequency per hour	Service 1	Service 2	Service 3	Service 4	Service 5	Service 6	Service 7	Service 8	Service 9	Service 10
	0.08	1	0.08							

NODE 5

Public transport type										
Distance to node (m)										
Average frequency per hour	Service 1	Service 2	Service 3	Service 4	Service 5	Service 6	Service 7	Service 8	Service 9	Service 10

Accessibility Index	2.53
---------------------	------

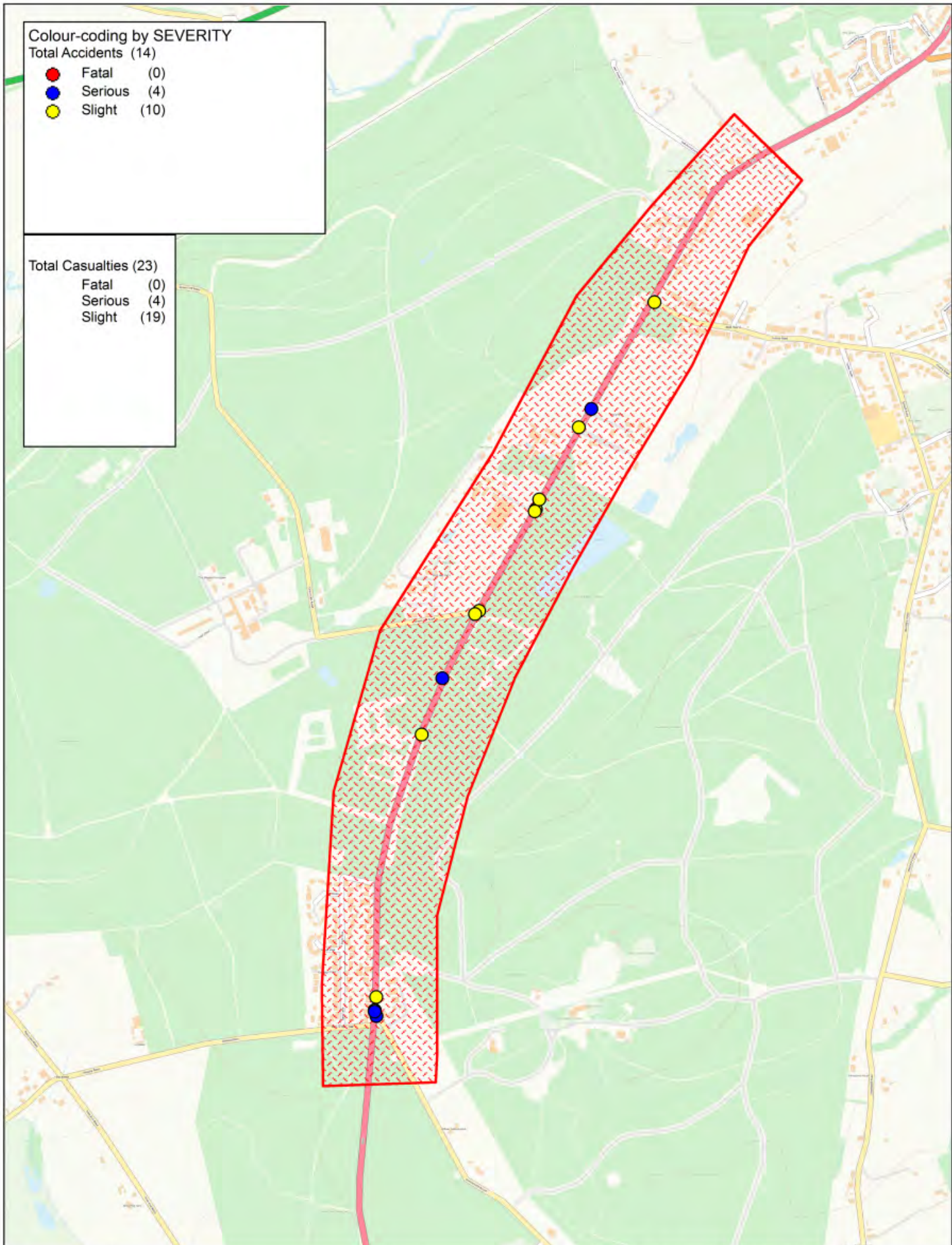
APPENDIX F. PIA Data

Colour-coding by SEVERITY
 Total Accidents (14)

- Fatal (0)
- Serious (4)
- Slight (10)

Total Casualties (23)

- Fatal (0)
- Serious (4)
- Slight (19)



© Crown copyright. All rights reserved
 Hampshire Police
 Selected map area Licence No. 01021C 2023

	1 : 13340
DATE	27/09/2023
DRAWING No.	
DRAWN BY	

Accidents between dates 01/03/2018 and 28/02/2023 (60) months

Selection:

Selected using Pre-defined Query : ; Refined using Accidents within selected Polygons -HC - RPU Statistics Request ("HR A325 FARNAHM"); Refined using Accidents within selected Polygons -HC - RPU Statistics Request ("HR A325 FARNAHM")

Notes:

Selected Polygon:HR A325 FARNAHM

44180281211 25/07/2018 Time 1323 Vehicles 2 Casualties 1 Slight
 E:480972 N:142789 First Road: A 325 Road Type Single carriageway
 Speed limit: 40 Junction Detail: T & Stag Jct Give way or controlled Unclassified
 Crossing: Control None Facilities: None within 50m Road surface Dry
 Daylight Fine without high winds
 Special Conditions at Site None Carriageway Hazards: None
 Place accident reported: At scene DfT Special Projects:

Causation

	Factor:	Participant:	Confidence:
1st:	Failed to judge other persons path or speed	Vehicle 1	Very Likely
2nd:			
3rd:			
4th:			
5th:			
6th:			

VEH2 (CAR) TRAVELLING SW ALONG A325 FARNHAM ROAD STOPS TO TURN RIGHT INTO GRAVEL HILL ROAD. VEH1 (CAR) TRAVELLING SW ALONG A325 FARNHAM ROAD FAILS TO STOP AND COLLIDES WITH THE REAR OF VEH2.

Occurred on A325 FARNHAM ROAD, AT JUNCTION WITH GRAVEL HILL ROAD, ROWLEDGE, HAMPSHIRE.

Vehicle Reference 1 Car Going ahead other
 Vehicle movement from NE to SW No tow / articulation Leaving the main road
 On main carriageway No skidding, jack-knifing or overturning
 Location at impact Jct Approach First impact Front Hit vehicle:
 Hit object in road None Off road: None
 Did not leave carr Age of Driver 40 Female
 Not hit and run Breath test Not applicable
 Left hand drive: No

Vehicle Reference 2 Car Waiting to turn right
 Vehicle movement from NE to W No tow / articulation Leaving the main road
 On main carriageway No skidding, jack-knifing or overturning
 Location at impact Jct Approach First impact Back Hit vehicle:
 Hit object in road None Off road: None
 Did not leave carr Age of Driver 52 Female
 Not hit and run Breath test Not requested
 Left hand drive: No

Casualty Reference: 1 Vehicle: 2 Age: 52 Female Driver/rider Severity: Slight
 Not a pupil
 Seatbelt Not Applicable Cycle helmet: Not a cyclist

Accidents between dates 01/03/2018 and 28/02/2023 (60) months

Selection:

Selected using Pre-defined Query : ; Refined using Accidents within selected Polygons -HC - RPU Statistics Request ("HR A325 FARNAHM"); Refined using Accidents within selected Polygons -HC - RPU Statistics Request ("HR A325 FARNAHM")

Notes:

44180299866 08/08/2018 Time 0944 Vehicles 2 Casualties 1 Slight
 E:480961 N:142781 First Road: A 325 Road Type Single carriageway
 Speed limit: 60 Junction Detail: T & Stag Jct Give way or controlled Unclassified
 Crossing: Control None Facilities: None within 50m Road surface Dry
 Daylight Fine without high winds
 Special Conditions at Site None Carriageway Hazards: None
 Place accident reported: At scene DfT Special Projects:

Causation

	Factor:	Participant:	Confidence:
1st:	Failed to look properly	Vehicle 1	Very Likely
2nd:			
3rd:			
4th:			
5th:			
6th:			

VEH1 (CAR) TRAVELLING SW ALONG A325 TURNS RIGHT INTO GRAVEL HILL ROAD WITHOUT GIVING WAY TO VEH2 (P/CYCLE) TRAVELLING NE ALONG A325.

Occurred on A325 AT JUNCTION WITH GRAVEL HILL ROAD, FARNHAM, HAMPSHIRE

Vehicle Reference 1 Car Turning right
 Vehicle movement from NE to W No tow / articulation Leaving the main road
 On main carriageway No skidding, jack-knifing or overturning
 Location at impact Mid Junction - on roundabout or r First impact Front Hit vehicle:
 Hit object in road None Off road: None
 Did not leave carr Age of Driver 74 Female
 Not hit and run Breath test Negative
 Left hand drive: No

Vehicle Reference 2 Pedal Cycle Going ahead other
 Vehicle movement from SW to NE No tow / articulation Leaving the main road
 On main carriageway No skidding, jack-knifing or overturning
 Location at impact Mid Junction - on roundabout or r First impact Offside Hit vehicle:
 Hit object in road None Off road: None
 Did not leave carr Age of Driver 81 Male
 Not hit and run Breath test Not applicable
 Left hand drive: No

Casualty Reference: 1 Vehicle: 2 Age: 81 Male Driver/rider Severity: Slight
 Not a pupil
 Seatbelt Not Applicable Cycle helmet: Yes

Accidents between dates 01/03/2018 and 28/02/2023 (60) months

Selection:

Selected using Pre-defined Query : ; Refined using Accidents within selected Polygons -HC - RPU Statistics Request ("HR A325 FARNAHM"); Refined using Accidents within selected Polygons -HC - RPU Statistics Request ("HR A325 FARNAHM")

Notes:

44190357430 06/10/2019 Time 1848 Vehicles 2 Casualties 1 Slight
 E:480698 N: 141755 First Road: A 325 Road Type Single carriageway
 Speed limit: 50 Junction Detail: Pri Drive Give way or controlled Unclassified
 Crossing: Control None Facilities: None within 50m Road surface Dry
 Darkness: no street lighting Fine without high winds
 Special Conditions at Site None Carriageway Hazards: None
 Place accident reported: At scene DfT Special Projects:

Causation

	Factor:	Participant:	Confidence:
1st:	Failed to look properly	Vehicle 1	Possible
2nd:	Failed to judge other persons path or speed	Vehicle 1	Possible
3rd:	Vegetation	Vehicle 1	
4th:			
5th:			
6th:			

VEH1 (CAR) PULLED OUT OF A PRIVATE CAR PARK ON THE EASTERN SIDE OF THE ROAD ONTO A325 INTO THE PATH OF VEH2 (CAR) TRAVELLING S ALONG A325. VEH1'S VIEW WAS HAMPERED BY OVERGROWN VEGITAITON.

Occurred on A325 AT JUNCTION WITH A PRIVATE CAR PARK ON THE EASTERN SIDE OF THE ROAD, BUCKS HORN OAK, HAMPSHIRE

Vehicle Reference 1 Car Turning right
 Vehicle movement from E to N No tow / articulation Leaving the main road
 On main carriageway No skidding, jack-knifing or overturning
 Location at impact Mid Junction - on roundabout or r First impact Front Hit vehicle:
 Hit object in road None Off road: None
 Did not leave carr Age of Driver 44 Female
 Not hit and run Breath test Negative
 Left hand drive: No

Vehicle Reference 2 Car Going ahead other
 Vehicle movement from N to S No tow / articulation Leaving the main road
 On main carriageway No skidding, jack-knifing or overturning
 Location at impact Mid Junction - on roundabout or r First impact Front Hit vehicle:
 Hit object in road None Off road: None
 Did not leave carr Age of Driver 42 Female
 Not hit and run Breath test Negative
 Left hand drive: No

Casualty Reference: 1 Vehicle: 2 Age: 42 Female Driver/rider Severity: Slight
 Not a pupil
 Seatbelt Not Applicable Cycle helmet: Not a cyclist

Accidents between dates 01/03/2018 and 28/02/2023 (60) months

Selection: Notes:

Selected using Pre-defined Query : ; Refined using Accidents within selected Polygons -HC - RPU Statistics Request ("HR A325 FARNAHM"); Refined using Accidents within selected Polygons -HC - RPU Statistics Request ("HR A325 FARNAHM")

44200192392 30/05/2020 Time 0017 Vehicles 1 Casualties 1 Slight
 E:480819 N: 142458 First Road: A 325 Road Type Single carriageway
 Speed limit: 60 Junction Detail: Not within 20m of junction
 Crossing: Control None Facilities: None within 50m Road surface Dry
 Darkness: no street lighting Fine without high winds
 Special Conditions at Site None Carriageway Hazards: None
 Place accident reported: At scene DfT Special Projects:

Causation

Factor:	Participant:	Confidence:
1st:		
2nd:		
3rd:		
4th:		
5th:		
6th:		

VEH 1 (CAR) TRAVELLING S ALONG A325 HAS LOST CONTROL, LEFT CARRIAGEWAY TO NEARSIDE AND COLLIDED WITH A TREE.

Occurred on A325, 778 METRES NORTH OF THE JUNCTION WITH BINSTEAD ROAD, SLEAFORD, BORDON, HAMPSHIRE

Vehicle Reference 1 Car Going ahead right bend
 Vehicle movement from N to S No tow / articulation Leaving the main road
 On main carriageway No skidding, jack-knifing or overturning
 Location at impact Not at, or within 20M of Jct First impact Front Hit vehicle:
 Hit object in road None Off road: Tree
 Nearside Age of Driver 22 Female
 Not hit and run Breath test Positive
 Left hand drive: No

Casualty Reference: 1 Vehicle: 1 Age: 22 Female Driver/rider Severity: Slight
 Not a pupil
 Seatbelt Not Applicable Cycle helmet: Not a cyclist

Accidents between dates 01/03/2018 and 28/02/2023 (60) months

Selection:

Selected using Pre-defined Query : ; Refined using Accidents within selected Polygons -HC - RPU Statistics Request ("HR A325 FARNAHM"); Refined using Accidents within selected Polygons -HC - RPU Statistics Request ("HR A325 FARNAHM")

Notes:

44200347023 08/09/2020 Time 1719 Vehicles 2 Casualties 1 Slight
 E:480694 N: 141720 First Road: A 325 Road Type Single carriageway
 Speed limit: 40 Junction Detail: T & Stag Jct Give way or controlled Unclassified
 Crossing: Control None Facilities: Central reservation Road surface Dry
 Daylight Fine without high winds
 Special Conditions at Site None Carriageway Hazards: None
 Place accident reported: At scene DfT Special Projects:

Causation

	Factor:	Participant:	Confidence:
1st:	Inexperienced or learner driver/rider	Vehicle 2	Very Likely
2nd:	Failed to look properly	Vehicle 2	Possible
3rd:			
4th:			
5th:			
6th:			

VEH 1 (CAR) TRAVELLING N ALONG A325 HAS SLOWED TO ALLOW PEDESTRIANS TO CROSS. VEH 2 (CAR) TRAVELLING NW ALONG DOCKENFIELD ROAD HAS TURNED RIGHT ON TO THE A325, FAILED TO NOTICE VEH 1 AND COLLIDED WITH THEIR REAR.

Occurred on A325 AT THE JUNCTION WITH DOCKENFIELD ROAD, BUCKS HORN OAK, HAMPSHIRE.

Vehicle Reference 1 Car Stopping
 Vehicle movement from S to N No tow / articulation Leaving the main road
 On main carriageway No skidding, jack-knifing or overturning
 Location at impact Cleared junction or waiting/park First impact Back Hit vehicle:
 Hit object in road None Off road: Telegraph / Electricity pole
 Nearside Age of Driver 66 Female
 Not hit and run Breath test Not requested
 Left hand drive: No

Casualty Reference: 1 Vehicle: 1 Age: 66 Female Driver/rider Severity: Slight
 Not a pupil
 Seatbelt Not Applicable Cycle helmet: Not a cyclist

Vehicle Reference 2 Car Turning right
 Vehicle movement from SE to N No tow / articulation Leaving the main road
 On main carriageway No skidding, jack-knifing or overturning
 Location at impact Mid Junction - on roundabout or 1 First impact Front Hit vehicle:
 Hit object in road None Off road: None
 Did not leave carr Age of Driver 18 Female
 Not hit and run Breath test Not requested
 Left hand drive: No

Accidents between dates 01/03/2018 and 28/02/2023 (60) months

Selection: Notes:

Selected using Pre-defined Query : ; Refined using Accidents within selected Polygons -HC - RPU Statistics Request ("HR A325 FARNAHM"); Refined using Accidents within selected Polygons -HC - RPU Statistics Request ("HR A325 FARNAHM")

44210058996 16/02/2021 Time 1805 Vehicles 1 Casualties 1 Serious
 E:480874 N: 142609 First Road: A 325 Road Type Single carriageway
 Speed limit: 50 Junction Detail: Not within 20m of junction
 Crossing: Control None Facilities: None within 50m Road surface Wet/Damp
 Darkness: no street lighting Fine without high winds
 Special Conditions at Site None Carriageway Hazards: None
 Place accident reported: At scene DfT Special Projects:

Causation

	Factor:	Participant:	Confidence:
1st:	Passing too close to cyclist, horse rider or pedestrian	Vehicle 1	Possible
2nd:	Distraction in vehicle	Vehicle 1	Possible
3rd:	Pedestrian wearing dark clothing at night	Casualty 1	
4th:			
5th:			
6th:			

VEH 1 (CAR) TRAVELLING NE ALONG A325 FARNHAM ROAD, THE WING MIRROR HAS COLLIDED WITH CAS 1 (PEDESTRIAN) TRAVELLING IN THE SAME DIRECTION ALONG AN UNLIT SECTION OF THE CARRIAGEWAY.

Occurred on A325 FARNHAM ROAD 189 METERS SOUTH WEST OF GRAVEL HILL ROAD, BORDON, HAMPSHIRE

Vehicle Reference 1 Car Going ahead other
 Vehicle movement from SW to NE No tow / articulation Leaving the main road
 On main carriageway No skidding, jack-knifing or overturning
 Location at impact Not at, or within 20M of Jct First impact Nearside Hit vehicle:
 Hit object in road None Off road: None
 Did not leave carr Age of Driver 47 Male
 Not hit and run Breath test Negative
 Left hand drive: No

Casualty Reference: 1 Vehicle: 1 Age: 22 Male Pedestrian Severity: Serious
 Not a pupil
 Seatbelt Not Applicable Cycle helmet: Not a cyclist
 In carr not crossing NE bound
 In carr back to traffic

Accidents between dates 01/03/2018 and 28/02/2023 (60) months

Selection:

Selected using Pre-defined Query : ; Refined using Accidents within selected Polygons -HC - RPU Statistics Request ("HR A325 FARNAHM"); Refined using Accidents within selected Polygons -HC - RPU Statistics Request ("HR A325 FARNAHM")

Notes:

44210339524 25/08/2021 Time 1421 Vehicles 3 Casualties 2 Slight
 E:481123 N: 143061 First Road: A 325 Road Type Single carriageway
 Speed limit: 60 Junction Detail: Pri Drive Give way or controlled Unclassified
 Crossing: Control None Facilities: None within 50m Road surface Dry
 Daylight Fine without high winds
 Special Conditions at Site None Carriageway Hazards: None
 Place accident reported: At scene DfT Special Projects:

Causation

	Factor:	Participant:	Confidence:
1st:	Fatigue	Vehicle 003	Very Likely
2nd:	Failed to look properly	Vehicle 003	Very Likely
3rd:	Failed to judge other persons path or speed	Vehicle 003	
4th:			
5th:			
6th:			

VEH 3 (CAR) TRAVELLING S ON A325 FAILS TO SEE VEH 2 (CAR) WAITING BEHIND VEH 1 (CAR) TURNING RIGHT INTO GARDEN CENTRE AND CAUSES THREE CAR SHUNT BY COLLIDING WITH REAR OF VEH 2 WHICH THEN COLLIDES WITH REAR OF VEH 1

Occurred on A 325 AT ENTRANCE TO FOREST LODGE GARDEN CENTRE

Vehicle Reference 1 Car Turning right
 Vehicle movement from NE to SW No tow / articulation Leaving the main road
 On main carriageway No skidding, jack-knifing or overturning
 Location at impact Jct Approach First impact Back Hit vehicle:
 Hit object in road None Off road: None
 Did not leave carr Age of Driver 45 Female
 Not hit and run Breath test Negative
 Left hand drive: No

Vehicle Reference 2 Car Going ahead but held up
 Vehicle movement from NE to SW No tow / articulation Leaving the main road
 On main carriageway No skidding, jack-knifing or overturning
 Location at impact Jct Approach First impact Back Hit vehicle:
 Hit object in road None Off road: None
 Did not leave carr Age of Driver 51 Male
 Not hit and run Breath test Negative
 Left hand drive: No

Casualty Reference: 2 Vehicle: 2 Age: 51 Male Driver/rider Severity: Slight
 Not a pupil
 Seatbelt Worn and ind Cycle helmet: Not a cyclist

Accidents between dates 01/03/2018 and 28/02/2023 (60) months

Selection: Notes:

Selected using Pre-defined Query : ; Refined using Accidents within selected Polygons -HC - RPU Statistics Request ("HR A325 FARNAHM"); Refined using Accidents within selected Polygons -HC - RPU Statistics Request ("HR A325 FARNAHM")

Vehicle Reference 3 Car Going ahead other
Vehicle movement from NE to SW No tow / articulation Leaving the main road
On main carriageway No skidding, jack-knifing or overturning
Location at impact Jct Approach First impact Front Hit vehicle:
Hit object in road None Off road: Entered ditch
Nearside Age of Driver 20 Male
Not hit and run Breath test Negative
Left hand drive: No

Casualty Reference: 1 Vehicle: 3 Age: 20 Male Driver/rider Severity: Slight
Not a pupil
Seatbelt Worn and ind Cycle helmet: Not a cyclist

Accidents between dates 01/03/2018 and 28/02/2023 (60) months

Selection:

Selected using Pre-defined Query : ; Refined using Accidents within selected Polygons -HC - RPU Statistics Request ("HR A325 FARNAHM"); Refined using Accidents within selected Polygons -HC - RPU Statistics Request ("HR A325 FARNAHM")

Notes:

44210354002 04/09/2021 Time 1206 Vehicles 3 Casualties 4 Slight
 E:481237 N: 143281 First Road: A 325 Road Type Single carriageway
 Speed limit: 50 Junction Detail: Pri Drive Give way or controlled Unclassified
 Crossing: Control None Facilities: None within 50m Road surface Dry
 Daylight Fine without high winds
 Special Conditions at Site None Carriageway Hazards: None
 Place accident reported: At scene DfT Special Projects:

Causation

	Factor:	Participant:	Confidence:
1st:	Failed to look properly	Vehicle 001	Very Likely
2nd:	Distraction in vehicle	Vehicle 001	Very Likely
3rd:			
4th:			
5th:			
6th:			

VEH 1 (CAR) TRAVELLING N TO W ON A325 TURNS R INTO BIRDWORLD WITHOUT LOOKING AND COLLIDES WITH VEH 2 (CAR) TRAVELLING S TO N CAUSING VEH 1 TO SPIN IN CARRIAGEWAY AND VEH 3 (CAR) TRAVELLING N TO S IS UNABLE TO AVOID COLLIDING WITH REAR OF VEH 1
 Occurred on ENTRANCE TO BIRDWORLD ON A325 HOLT POUND ROAD FARNHAM

Vehicle Reference 1 Car Turning right
 Vehicle movement from N to SE No tow / articulation Leaving the main road
 On main carriageway No skidding, jack-knifing or overturning
 Location at impact Leaving main road First impact Front Hit vehicle:
 Hit object in road None Off road: None
 Did not leave carr Age of Driver 46 Male
 Not hit and run Breath test Negative
 Left hand drive: No

Vehicle Reference 2 Car Going ahead other
 Vehicle movement from S to N No tow / articulation Leaving the main road
 On main carriageway No skidding, jack-knifing or overturning
 Location at impact Mid Junction - on roundabout or r First impact Front Hit vehicle:
 Hit object in road None Off road: None
 Did not leave carr Age of Driver 58 Male
 Not hit and run Breath test Negative
 Left hand drive: No

Casualty Reference: 1 Vehicle: 2 Age: 58 Male Driver/rider Severity: Slight
 Not a pupil
 Seatbelt Not Applicable Cycle helmet: Not a cyclist

Accidents between dates 01/03/2018 and 28/02/2023 (60) months

Selection: Notes:

Selected using Pre-defined Query : ; Refined using Accidents within selected Polygons -HC - RPU Statistics Request ("HR A325 FARNAHM"); Refined using Accidents within selected Polygons -HC - RPU Statistics Request ("HR A325 FARNAHM")

Vehicle Reference 3 Car Going ahead other
 Vehicle movement from N to S No tow / articulation Leaving the main road
 On main carriageway Skidded
 Location at impact Jct Approach First impact Front Hit vehicle:
 Hit object in road None Off road: None
 Did not leave carr Age of Driver 30 Unknown
 Not hit and run Breath test Negative
 Left hand drive: No

Casualty Reference: 2 Vehicle: 3 Age: 38 Male Passenger Severity: Slight

Not a pupil

Seatbelt Not Applicable Cycle helmet: Not a cyclist

Front seat

Casualty Reference: 3 Vehicle: 3 Age: 8 Male Passenger Severity: Slight

Not a pupil

Seatbelt Not Applicable Cycle helmet: Not a cyclist

Back seat

Casualty Reference: 4 Vehicle: 3 Age: 11 Female Passenger Severity: Slight

Not a pupil

Seatbelt Not Applicable Cycle helmet: Not a cyclist

Back seat

Accidents between dates 01/03/2018 and 28/02/2023 (60) months

Selection:

Selected using Pre-defined Query : ; Refined using Accidents within selected Polygons -HC - RPU Statistics Request ("HR A325 FARNAHM"); Refined using Accidents within selected Polygons -HC - RPU Statistics Request ("HR A325 FARNAHM")

Notes:

44210371104 15/09/2021 Time 1624 Vehicles 2 Casualties 2 Slight
 E:481438 N: 143616 First Road: A 325 Road Type Single carriageway
 Speed limit: 30 Junction Detail: T & Stag Jct Give way or controlled Unclassified
 Crossing: Control None Facilities: None within 50m Road surface Dry
 Daylight Fine without high winds
 Special Conditions at Site None Carriageway Hazards: None
 Place accident reported: At scene DfT Special Projects:

Causation

	Factor:	Participant:	Confidence:
1st:	Following too close	Vehicle 001	Very Likely
2nd:	Travelling too fast for conditions	Vehicle 001	Possible
3rd:			
4th:			
5th:			
6th:			

VEH 1 (VAN) TRAVELLING S TO N ALONG A325 FAILS TO SLOW IN TIME AS VEH 2 (CAR) TRAVELLING S TO N TURNS RIGHT INTO FULLERS ROAD. VEH 1 COLLIDES WITH REAR OF VEH 2
 Occurred on JUNCTION OF A325 WITH FULLERS ROAD FARNHAM

Vehicle Reference 1 Van or Goods 3.5 tonnes mgw and under Going ahead other
 Vehicle movement from S to N No tow / articulation Leaving the main road
 On main carriageway No skidding, jack-knifing or overturning
 Location at impact Jct Approach First impact Front Hit vehicle:
 Hit object in road None Off road: None
 Did not leave carr Age of Driver 25 Male
 Not hit and run Breath test Negative
 Left hand drive: No

Vehicle Reference 2 Car Stopping
 Vehicle movement from S to N No tow / articulation Leaving the main road
 On main carriageway No skidding, jack-knifing or overturning
 Location at impact Jct Approach First impact Back Hit vehicle:
 Hit object in road None Off road: None
 Did not leave carr Age of Driver 50 Female
 Not hit and run Breath test Not requested
 Left hand drive: No

Casualty Reference: 1 Vehicle: 2 Age: 50 Female Driver/rider Severity: Slight
 Not a pupil
 Seatbelt Not Applicable Cycle helmet: Not a cyclist

Casualty Reference: 2 Vehicle: 2 Age: 71 Female Passenger Severity: Slight
 Not a pupil
 Seatbelt Not Applicable Cycle helmet: Not a cyclist
 Front seat

Accidents between dates 01/03/2018 and 28/02/2023 (60) months

Selection:

Selected using Pre-defined Query : ; Refined using Accidents within selected Polygons -HC - RPU Statistics Request ("HR A325 FARNAHM"); Refined using Accidents within selected Polygons -HC - RPU Statistics Request ("HR A325 FARNAHM")

Notes:

44210435430 30/10/2021 Time 1434 Vehicles 2 Casualties 1 Serious
 E:480699 N: 141704 First Road: A 325 Road Type Single carriageway
 Speed limit: 30 Junction Detail: T & Stag Jct Give way or controlled Unclassified
 Crossing: Control None Facilities: None within 50m Road surface Dry
 Daylight Fine without high winds
 Special Conditions at Site None Carriageway Hazards: None
 Place accident reported: At scene DfT Special Projects:

Causation

	Factor:	Participant:	Confidence:
1st:	Failed to look properly	Vehicle 1	Very Likely
2nd:	Distraction in vehicle	Vehicle 1	Possible
3rd:			
4th:			
5th:			
6th:			

VEH1 (CAR) TRAVELLING NW ALONG DOCKENFIELD STREET TURNED RIGHT ONTO A325 AND KNOCKED OVER VEH2 (P/CYCLE) TRAVELLING N ALONG A325 AND INTENDING TO TURN RIGHT ONTO DOCKENFIELD STREET.

Occurred on A325 AT JUNCTION WITH DOCKENFIELD STREET, BINSTEAD, HAMPSHIRE

Vehicle Reference 1 Car Turning right
 Vehicle movement from SW to N No tow / articulation Leaving the main road
 On main carriageway No skidding, jack-knifing or overturning
 Location at impact Mid Junction - on roundabout or r First impact Front Hit vehicle:
 Hit object in road None Off road: None
 Did not leave carr Age of Driver 37 Male
 Not hit and run Breath test Negative
 Left hand drive: No

Vehicle Reference 2 Pedal Cycle Turning right
 Vehicle movement from S to SW No tow / articulation Leaving the main road
 On main carriageway No skidding, jack-knifing or overturning
 Location at impact Mid Junction - on roundabout or r First impact Offside Hit vehicle:
 Hit object in road None Off road: None
 Did not leave carr Age of Driver 76 Male
 Not hit and run Breath test Not applicable
 Left hand drive: No

Casualty Reference: 1 Vehicle: 2 Age: 76 Male Driver/rider Severity: Serious
 Not a pupil
 Seatbelt Not Applicable Cycle helmet: Yes

Accidents between dates 01/03/2018 and 28/02/2023 (60) months

Selection:

Selected using Pre-defined Query : ; Refined using Accidents within selected Polygons -HC - RPU Statistics Request ("HR A325 FARNAHM"); Refined using Accidents within selected Polygons -HC - RPU Statistics Request ("HR A325 FARNAHM")

Notes:

44220020971 17/01/2022 Time 0832 Vehicles 2 Casualties 4 Serious
 E:480694 N:141716 First Road: A 325 Road Type Single carriageway
 Speed limit: 60 Junction Detail: Not within 20m of junction
 Crossing: Control None Facilities: None within 50m Road surface Frost/Ice
 Daylight Fine without high winds
 Special Conditions at Site None Carriageway Hazards: None
 Place accident reported: At scene DfT Special Projects:

Causation

	Factor:	Participant:	Confidence:
1st:	Slippery road (due to weather)	Vehicle 001	Possible
2nd:			
3rd:			
4th:			
5th:			
6th:			

VEH 1 (CAR) TRAVELLING S ALONG A325 COLLIDES WITH VEH 2 (CAR) TRAVELLING N ALONG THE SAME ROAD

Occurred on BUCKS HORN OAK A325 OPPOSITE CAR DEALERS

Vehicle Reference 1 Car Going ahead other
 Vehicle movement from N to S No tow / articulation Leaving the main road
 On main carriageway Skidded
 Location at impact Not at, or within 20M of Jct First impact Front Hit vehicle:
 Hit object in road None Off road: None
 O/S Age of Driver 37 Male
 Not hit and run Breath test Negative
 Left hand drive: No

Casualty Reference: 1 Vehicle: 1 Age: 37 Male Driver/rider Severity: Slight
 Not a pupil
 Seatbelt Not Applicable Cycle helmet: Not a cyclist

Casualty Reference: 2 Vehicle: 1 Age: 5 Male Passenger Severity: Serious
 Not a pupil
 Seatbelt Not Applicable Cycle helmet: Not a cyclist

Back seat

Casualty Reference: 3 Vehicle: 1 Age: 2 Male Passenger Severity: Slight
 Not a pupil
 Seatbelt Not Applicable Cycle helmet: Not a cyclist

Back seat

Accidents between dates 01/03/2018 and 28/02/2023 (60) months

Selection: Notes:

Selected using Pre-defined Query : ; Refined using Accidents within selected Polygons -HC - RPU Statistics Request ("HR A325 FARNAHM"); Refined using Accidents within selected Polygons -HC - RPU Statistics Request ("HR A325 FARNAHM")

Vehicle Reference 2 Car Going ahead other
Vehicle movement from S to N No tow / articulation Leaving the main road
On main carriageway No skidding, jack-knifing or overturning
Location at impact Not at, or within 20M of Jct First impact Front Hit vehicle:
Hit object in road None Off road: None
Nearside Age of Driver 48 Female
Not hit and run Breath test Negative
Left hand drive: No

Casualty Reference: 4 Vehicle: 2 Age: 48 Female Driver/rider Severity: Slight
Not a pupil
Seatbelt Not Applicable Cycle helmet: Not a cyclist

Accidents between dates 01/03/2018 and 28/02/2023 (60) months

Selection:

Selected using Pre-defined Query : ; Refined using Accidents within selected Polygons -HC - RPU Statistics Request ("HR A325 FARNAHM"); Refined using Accidents within selected Polygons -HC - RPU Statistics Request ("HR A325 FARNAHM")

Notes:

44220232332 12/06/2022 Time 0651 Vehicles 4 Casualties 2 Serious
 E:481270 N: 143330 First Road: A 325 Road Type Single carriageway
 Speed limit: 50 Junction Detail: Not within 20m of junction
 Crossing: Control None Facilities: None within 50m Road surface Dry
 Daylight Fine without high winds
 Special Conditions at Site None Carriageway Hazards: None
 Place accident reported: At scene DfT Special Projects:

Causation

	Factor:	Participant:	Confidence:
1st:	Poor turn or manoevre	Vehicle 1	Very Likely
2nd:			
3rd:			
4th:			
5th:			
6th:			

VEH1 (CAR) TRAVELLING S ALONG A325 OVERTOOK VEH2 (CAR) TRAVELLING S ALONG A325 CAUSING VEH3 (CAR) TRAVELLING N ALONG A325 TO TAKE AVOIDING ACTION. THIS CAUSED VEH1 TO COLLIDE WITH VEH4 (CAR) TRAVELLING N ALONG A325. VEH1 AND VEH4 BOTH SPUN CAUSING VEH4 T
 Occurred on A325, 65 METERS NE OF BIRDWORLD ENTRANCE, FARNHAM, HAMPSHIRE

Vehicle Reference 1 Car Overtaking moving vehicle O/S
 Vehicle movement from N to S No tow / articulation Leaving the main road
 On main carriageway No skidding, jack-knifing or overturning
 Location at impact Not at, or within 20M of Jct First impact Front Hit vehicle:
 Hit object in road None Off road: None
 Did not leave carr Age of Driver 59 Female
 Not hit and run Breath test Not requested
 Left hand drive: No

Casualty Reference: 1 Vehicle: 1 Age: 59 Female Driver/rider Severity: Serious
 Not a pupil
 Seatbelt Not Applicable Cycle helmet: Not a cyclist

Vehicle Reference 2 Car Going ahead other
 Vehicle movement from N to S No tow / articulation Leaving the main road
 On main carriageway No skidding, jack-knifing or overturning
 Location at impact Not at, or within 20M of Jct First impact Front Hit vehicle:
 Hit object in road None Off road: None
 Did not leave carr Age of Driver 63 Male
 Not hit and run Breath test Negative
 Left hand drive: No

Accidents between dates 01/03/2018 and 28/02/2023 (60) months

Selection: Notes:

Selected using Pre-defined Query : ; Refined using Accidents within selected Polygons -HC - RPU Statistics Request ("HR A325 FARNAHM"); Refined using Accidents within selected Polygons -HC - RPU Statistics Request ("HR A325 FARNAHM")

Vehicle Reference 3 Car Going ahead other
 Vehicle movement from S to N No tow / articulation Leaving the main road
 On main carriageway No skidding, jack-knifing or overturning
 Location at impact Not at, or within 20M of Jct First impact Back Hit vehicle:
 Hit object in road None Off road: None
 Did not leave carr Age of Driver 55 Female
 Not hit and run Breath test Negative
 Left hand drive: No

Vehicle Reference 4 Car Going ahead other
 Vehicle movement from S to N No tow / articulation Leaving the main road
 On main carriageway No skidding, jack-knifing or overturning
 Location at impact Not at, or within 20M of Jct First impact Front Hit vehicle:
 Hit object in road None Off road: Telegraph / Electricity pole
 Nearside Age of Driver 30 Female
 Not hit and run Breath test Not requested
 Left hand drive: No

Casualty Reference: 2 Vehicle: 4 Age: 30 Female Driver/rider Severity: Slight
 Not a pupil
 Seatbelt Not Applicable Cycle helmet: Not a cyclist

Accidents between dates 01/03/2018 and 28/02/2023 (60) months

Selection: Notes:

Selected using Pre-defined Query : ; Refined using Accidents within selected Polygons -HC - RPU Statistics Request ("HR A325 FARNAHM"); Refined using Accidents within selected Polygons -HC - RPU Statistics Request ("HR A325 FARNAHM")

44230041402 31/01/2023 Time 1014 Vehicles 1 Casualties 1 Slight
 E:481132 N: 143088 First Road: A 325 Road Type Single carriageway
 Speed limit: 30 Junction Detail: Not within 20m of junction
 Crossing: Control None Facilities: None within 50m Road surface Dry
 Daylight Fine without high winds
 Special Conditions at Site None Carriageway Hazards: None
 Place accident reported: At scene DfT Special Projects:

Causation

	Factor:	Participant:	Confidence:
1st:	Failed to look properly	Vehicle 001	Possible
2nd:			
3rd:			
4th:			
5th:			
6th:			

VEH 1 (CAR) TRAVELLING NE ALONG FARNBOROUGH ROAD A325 BRAKES SHARPLY FOR TRAFFIC AND COLLIDES WITH A TREE TO THE NEARSIDE

Occurred on A325 JUST PAST HASKINS FOREST LODGE GARDEN CENTRE, ROWLEDGE, FARNHAM

Vehicle Reference 1 Car Stopping
 Vehicle movement from SW to NE No tow / articulation Leaving the main road
 On main carriageway No skidding, jack-knifing or overturning
 Location at impact Not at, or within 20M of Jct First impact Front Hit vehicle:
 Hit object in road None Off road: Tree
 Nearside Age of Driver 24 Female
 Not hit and run Breath test Negative
 Left hand drive: No

Casualty Reference: 1 Vehicle: 1 Age: 24 Female Driver/rider Severity: Slight
 Not a pupil
 Seatbelt Not Applicable Cycle helmet: Not a cyclist

Accidents between dates 01/03/2018 and 28/02/2023 (60) months

Selection:

Selected using Pre-defined Query : ; Refined using Accidents within selected Polygons -HC - RPU Statistics Request ("HR A325 FARNAHM"); Refined using Accidents within selected Polygons -HC - RPU Statistics Request ("HR A325 FARNAHM")

Notes:

44230045854 03/02/2023 Time 0712 Vehicles 2 Casualties 1 Slight
 E:481120 N: 143056 First Road: A 325 Road Type Single carriageway
 Speed limit: 60 Junction Detail: Pri Drive Give way or controlled Unclassified
 Crossing: Control None Facilities: None within 50m Road surface Wet/Damp
 Darkness: no street lighting Fine without high winds
 Special Conditions at Site None Carriageway Hazards: None
 Place accident reported: At scene DfT Special Projects:

Causation

	Factor:	Participant:	Confidence:
1st:	Inexperience with type of vehicle	Vehicle 1	Very Likely
2nd:	Careless/Reckless/In a hurry	Vehicle 1	Very Likely
3rd:			
4th:			
5th:			
6th:			

VEH1 (BUS) TRAVELLING SW ALONG A325 FAILED TO STOP IN TIME AND COLLIDED WITH VEH2 (CAR) TRAVELLING SW ALONG A325, WAITING TO TURN INTO HASKINS GARDEN CENTRE
 Occurred on A325 AT JUNCTION WTH ENTRANCE TO HASKINS GARDEN CENTRE, FARNHAM, HAMPSHIRE

Vehicle Reference 1 Bus or coach Going ahead other
 Vehicle movement from NE to SW No tow / articulation Leaving the main road
 On main carriageway No skidding, jack-knifing or overturning
 Location at impact Jct Approach First impact Front Hit vehicle:
 Hit object in road None Off road: None
 Did not leave carr Age of Driver 47 Male
 Not hit and run Breath test Negative
 Left hand drive: No

Casualty Reference: 1 Vehicle: 1 Age: 47 Male Driver/rider Severity: Slight
 Not a pupil
 Seatbelt Not Applicable Cycle helmet: Not a cyclist

Vehicle Reference 2 Car Waiting to turn right
 Vehicle movement from NE to SW No tow / articulation Leaving the main road
 On main carriageway No skidding, jack-knifing or overturning
 Location at impact Jct Approach First impact Back Hit vehicle:
 Hit object in road None Off road: None
 Did not leave carr Age of Driver 63 Female
 Not hit and run Breath test Negative
 Left hand drive: No

Accidents between dates **01/03/2018** and **28/02/2023** (60) months

Selection:

Selected using Pre-defined Query : ; Refined using Accidents within selected Polygons -HC - RPU Statistics Request ("HR A325 FARNAHM"); Refined using Accidents within selected Polygons -HC - RPU Statistics Request ("HR A325 FARNAHM")

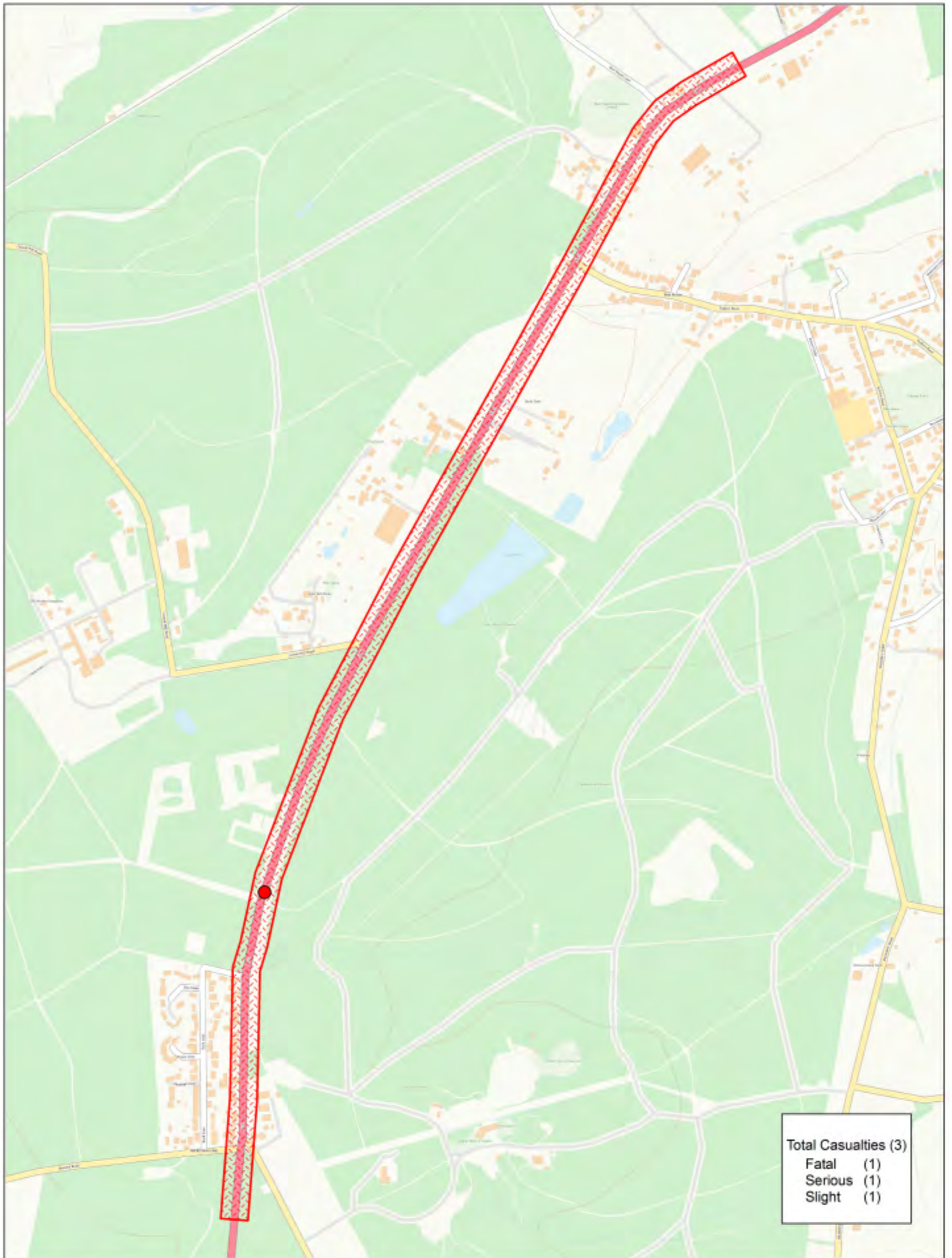
Notes:

Accidents involving:

	Fatal	Serious	Slight	Total
Motor vehicles only (excluding 2-wheels)	0	3	9	12
2-wheeled motor vehicles	0	0	0	0
Pedal cycles	0	1	1	2
Horses & other	0	0	0	0
Total	0	4	10	14

Casualties:

	Fatal	Serious	Slight	Total
Vehicle driver	0	1	13	14
Passenger	0	1	5	6
Motorcycle rider	0	0	0	0
Cyclist	0	1	1	2
Pedestrian	0	1	0	1
Other	0	0	0	0
Total	0	4	19	23



Rowledge

SCALE	1 : 11000
DATE	10/01/2024
DRAWING No.	
DRAWN BY	

Accidents between dates **01/03/2023** and **30/09/2023** (7) months

Selection:

Notes:

Selected using Pre-defined Query : ; Refined using Accidents
within selected Polygons -HC - RPU Statistics Request ("AW
ROWLEDGE BACS/SR/0124/002")

Selected Polygon:AW ROWLEDGE BACS/SR/0124/002

Accidents between dates 01/03/2023 and 30/09/2023 (7) months

Selection: Notes:

Selected using Pre-defined Query : ; Refined using Accidents within selected Polygons -HC - RPU Statistics Request ("AW ROWLEDGE BACS/SR/0124/002")

44230093928 08/03/2023 Time 1154 Vehicles 2 Casualties 3 Fatal
 E:480744 N: 142241 First Road: A 325 Road Type Single carriageway
 Speed limit: 50 Junction Detail: Not within 20m of junction
 Crossing: Control None Facilities: None within 50m Road surface Wet/Damp
 Daylight Raining without high winds
 Special Conditions at Site None Carriageway Hazards: None
 Place accident reported: At scene DfT Special Projects:

Causation

	Factor:	Participant:	Confidence:
1st:	Swerved	Vehicle 001	Very Likely
2nd:	Illness or disability, mental or physical	Vehicle 001	Possible
3rd:			
4th:			
5th:			
6th:			

VEH 1 (CAR) TRAVELLING N TO S ALONG A325 SWERVES INTO PATH OF VEH 2 (CAR) TRAVELLING S TO N ALONG A325, COLLIDING WITH THE FRONT OF VEH 2

Occurred on A325 BUCKS HORN OAK JUST NORTH OF ALICE HOLT FOREST FOOTPATH, FARNHAM, HAMPSHIRE

Vehicle Reference 1 Car Going ahead other
 Vehicle movement from N to S No tow / articulation Leaving the main road
 On main carriageway Skidded
 Location at impact Not at, or within 20M of Jct First impact Front Hit vehicle:
 Hit object in road None Off road: None
 Did not leave carr Age of Driver 73 Male
 Not hit and run Breath test Not applicable
 Left hand drive: No

Casualty Reference: 1 Vehicle: 1 Age: 73 Male Driver/rider Severity: Fatal
 Not a pupil
 Seatbelt Unknown Cycle helmet: Not a cyclist

Accidents between dates **01/03/2023** and **30/09/2023** (7) months

Selection:

Selected using Pre-defined Query : ; Refined using Accidents within selected Polygons -HC - RPU Statistics Request ("AW ROWLEDGE BACS/SR/0124/002")

Notes:

Vehicle Reference 2 Car Going ahead other
 Vehicle movement from S to N No tow / articulation Leaving the main road
 On main carriageway No skidding, jack-knifing or overturning
 Location at impact Not at, or within 20M of Jct First impact Front Hit vehicle:
 Hit object in road None Off road: None
 Did not leave carr Age of Driver 67 Male
 Not hit and run Breath test Negative
 Left hand drive: No

Casualty Reference: 2 Vehicle: 2 Age: 67 Male Driver/rider Severity: Slight
 Not a pupil
 Seatbelt Worn but not i Cycle helmet: Not a cyclist

Casualty Reference: 3 Vehicle: 2 Age: 62 Female Passenger Severity: Serious
 Not a pupil
 Seatbelt Worn and ind Cycle helmet: Not a cyclist
 Front seat

Accidents involving:

	Fatal	Serious	Slight	Total
Motor vehicles only (excluding 2-wheels)	1	0	0	1
2-wheeled motor vehicles	0	0	0	0
Pedal cycles	0	0	0	0
Horses & other	0	0	0	0
Total	1	0	0	1

Casualties:

	Fatal	Serious	Slight	Total
Vehicle driver	1	0	1	2
Passenger	0	1	0	1
Motorcycle rider	0	0	0	0
Cyclist	0	0	0	0
Pedestrian	0	0	0	0
Other	0	0	0	0
Total	1	1	1	3