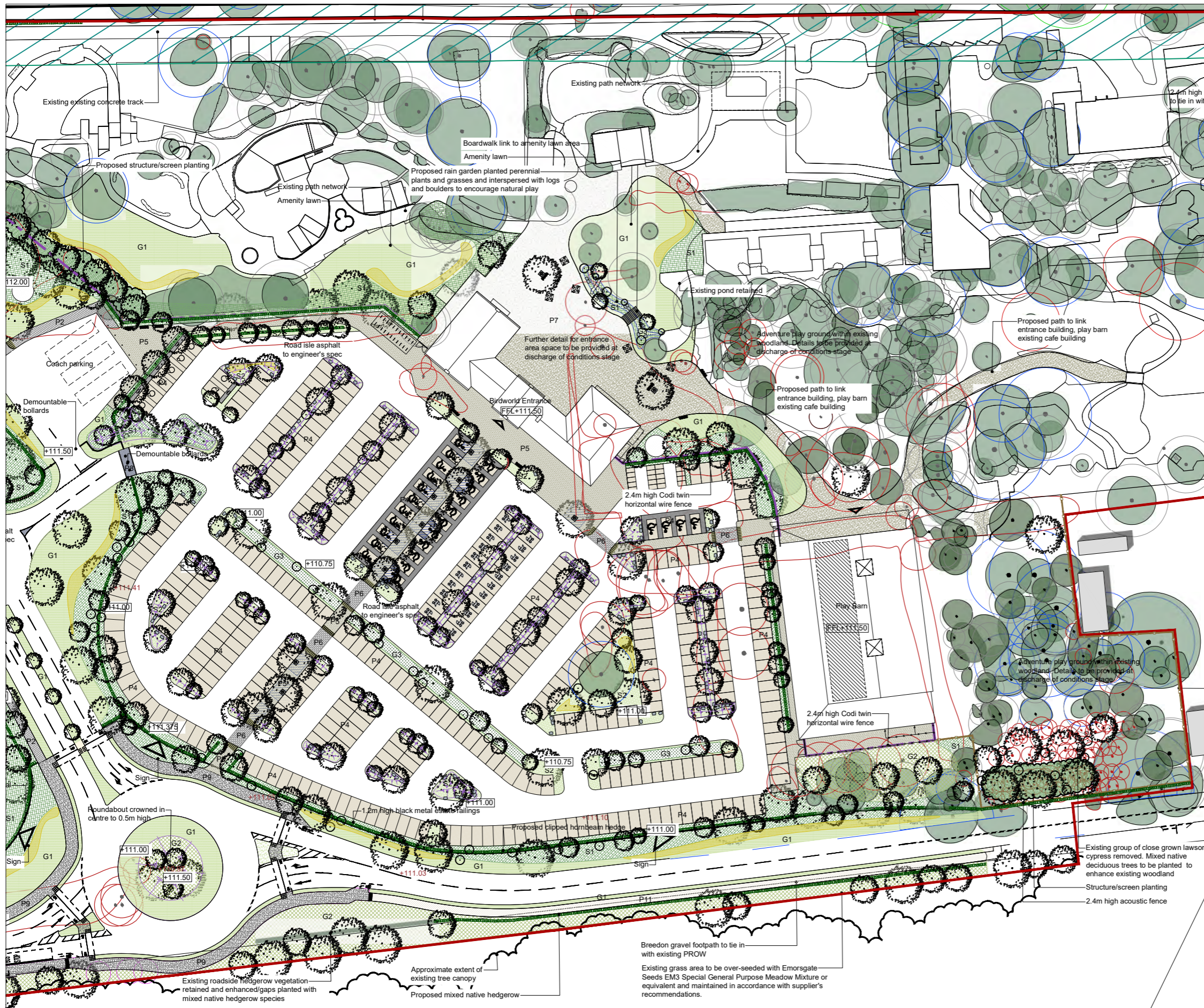


APPENDIX 2

Landscape General Arrangement Plan Sheet 2 of 3,
Drawing No: 21-47-202, Rev 0, 02/01/2024
(Richards Partnership)



Legend

Hard materials

- Garden Centre Parking Bays**
Tobermore or equivalent Hydrogrape Tegula permeable paving, 208x173 & 173x173mm, laid stretcher bond. Colour Cedar, with Slate to contrast accessible bay surrounds.
- Garden Centre Footpaths**
Tobermore or equivalent Fusion granite aggregate paving, 100x200 & 300x200mm laid stretcher bond. Colour Silver.
- Garden Centre Crossing Points**
Tobermore or equivalent Fusion granite aggregate paving, 200x100mm laid 90° herringbone. Colour Silver, with Graphite contrasting bands where shown.
- Birdworld Parking Bays**
Tobermore or equivalent Hydrogrape Tegula permeable paving, 200x100mm, laid 90° herringbone. Colour Bracken, with Natural to contrast accessible bay surrounds.
- Birdworld Footpaths**
Tobermore or equivalent Manhattan granite aggregate plank paving, 600x150mm, laid stretcher bond. Colour Silver.
- Birdworld Crossing Points**
Granite flags, 500x200mm laid running stretcher bond. Colour Silver.
- Birdworld Entrance Space Paving**
6mm Resin Bound gravel Sureset or equivalent. Colour Winter Pearl
- Entrance Road Overrun Setts and Rumble Strip**
80x80mm Porphyry setts
- Adopted Highway Footpath**
Asphalt to engineer's spec
- Hazard Warning Paving**
400x400mm concrete blister paving flags. Colour Buff
- Informal footpath link**
Breedon Golden Amber Gravel with timber edging
- Retaining wall**
Flex MSE or equivalent geotextile vegetated wall. Clad with pre-grown ivy screens along road frontage and plug planted along SuDS basin face.

Boundary Treatments

- Acoustic fence. Height varies between 2.0, 2.4 and 3.0m as shown
- 2.4m high close board timber fence
- 2.4m high palisade security fence
- 2.4m high Codi twin horizontal wire fence
- 1.2m high black metal estate railings
- Tertu or equivalent, timber clad steel vehicle guard rail to engineer's spec
- Demountable bollards

Planting

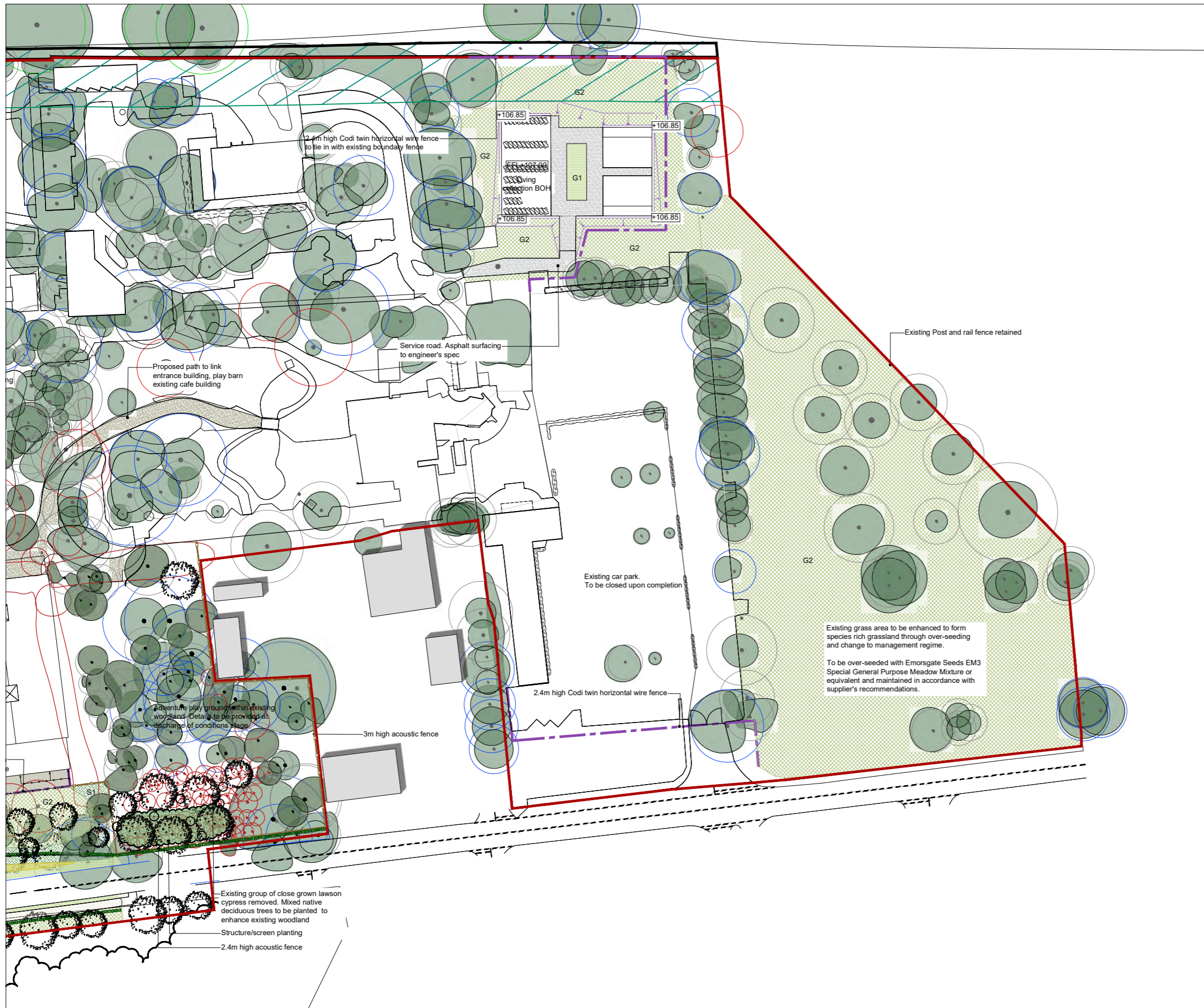
- Existing trees retained with associated RPA. Trees to be removed outlined in red
- Proposed ANS trees (small to large species indicated by canopy size) Trees in hard landscape planted into Green Blue Urban or equivalent rootspace arborystem. Rooting zone indicated with diagonal hatching.
- Proposed feathered trees
- Proposed structure planting
- Proposed hedge planting (with integral post and strained wire fence)
- Proposed ornamental shrub, herbaceous and grass planting Palette 1
- Proposed ornamental shrub, herbaceous and grass planting Palette 2
- Proposed amenity grass
- Proposed meadow grass managed for nature conservation. Special General Purpose Meadow mixture EM3 by Emorsgate Seeds or equivalent.
- Proposed meadow grass for wetlands

Proposed mounded landform and quarried boulders within birdworld carpark

Existing Levels +110.97
Proposed Levels +111.50

APPENDIX 3

Landscape General Arrangement Plan Sheet 3 of 3,
Drawing No: 21-47-203, Rev 0, 02/01/2024
(Richards Partnership)



Legend

Hard materials

- Garden Centre Parking Bays** (P1): Tobermore or equivalent Hydropave Tegula Duo permeable paving, 208x173 & 173x173mm, laid stretcher bond. Colour Cedar, with Slate to contrast accessible bay surrounds.
- Garden Centre Footpaths** (P2): Tobermore or equivalent Fusion granite aggregate paving, 100x200 & 300x200mm laid stretcher bond. Colour Silver.
- Garden Centre Crossing Points** (P3): Tobermore or equivalent Fusion granite aggregate paving, 200x100mm laid 90° herringbone. Colour Silver, with Graphite contrasting bands where shown.
- Birdworld Parking Bays** (P4): Tobermore or equivalent Hydropave Tegula Duo permeable paving, 200x100mm, laid 90° herringbone. Colour Bracken, with Natural to contrast accessible bay surrounds.
- Birdworld Footpaths** (P5): Tobermore or equivalent Manhattan granite aggregate plank paving, 600x150mm, laid stretcher bond. Colour Silver.
- Birdworld Crossing Points** (P6): Granite flags, 500x200mm laid running stretcher bond. Colour Silver.
- Birdworld Entrance Space Paving** (P7): 6mm Resin Bound gravel Sureset or equivalent. Colour Winter Pearl.
- Entrance Road Overrun Setts and Rumble Strip** (P8): 80x80mm Porphyry setts.
- Adopted Highway Footpath** (P9): Asphalt to engineer's spec.
- Hazard Warning Paving** (P10): 400x400mm concrete blister paving flags. Colour Buff.
- Informal footpath link** (P11): Brendon Golden Amber Gravel with timber edging.
- Retaining wall** (P12): Flex MSE or equivalent geotextile vegetated wall. Clad with pre-grown ivy screens along road frontage and plug planted along SuDS basin face.

Boundary Treatments

- Acoustic fence. Height varies between 2.0, 2.4 and 3.0m as shown.
- 2.4m high close board timber fence.
- 2.4m high palisade security fence.
- 2.4m high Codi twin horizontal wire fence.
- 1.2m high black metal estate railings.
- Tertu or equivalent, timber clad steel vehicle guard rail to engineer's spec.
- Demountable bollards.

Planting

- Existing trees retained with associated RPA. Trees to be removed outlined in red.
- Proposed ANS trees (small to large species indicated by canopy size). Trees in hard landscape planted into Green Blue Urban or equivalent rootspace arborystem. Rooting zone indicated with diagonal hatching.
- Proposed feathered trees.
- Proposed structure planting.
- Proposed hedge planting (with integral post and strained wire fence).
- Proposed ornamental shrub, herbaceous and grass planting Palette 1.
- Proposed ornamental shrub, herbaceous and grass planting Palette 2.
- Proposed amenity grass.
- Proposed meadow grass managed for nature conservation. Special General Purpose Meadow mixture EM3 by Emorsgate Seeds or equivalent.
- Proposed meadow grass for wetlands.

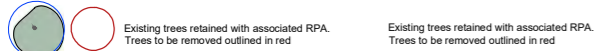
Proposed mounded landform and quarried boulders within birdworld carpark.

Existing Levels +110.97
Proposed Levels +111.50

APPENDIX 4

Planting Palettes,
Drawing No: 21-47-204, Rev 0, 02/01/2024
(Richards Partnership)

Legend



Proposed ANS Trees

Species	Size (girth)	Spec	Height
Acer campestre 'Streetwise' (Ac)	18-20cm	RB, DS	4.5-5.0m
Amelanchier x Grandiflora (Ag)	16-18cm	RB, DS	4.0-4.5m
Alnus glutinosa 'Laciniata' (Agl.)	18-20cm	RB, DS	4.5-5.0m
Betula pendula (Bp)	18-20cm	RB, DS	4.5-5.0m
Betula Umanii (Bu)	18-20cm	RB, DS	4.5-5.0m
Carpinus betulus (Cb)	18-20cm	RB, DS	4.5-5.0m
Corylus colurna (Cc)	18-20cm	RB, DS	4.5-5.0m
Liquidambar 'Worplesdon' (La)	18-20cm	RB, DS	4.5-5.0m
Pinus sylvestris (Ps)	Feathered	RB, DS	3.5-4.0m
Platanus hispanica Orientalis (Ph)	20-25cm	RB, DS	5.0-5.5m
Prunus avium (Pa)	18-20cm	RB, DS	4.5-5.0m
Prunus padus (Pp)	18-20cm	RB, DS	4.5-5.0m
Quercus 'Koster' (Qc)	Feathered	RB, DS	4.5-5.0m
Quercus robur (Qr)	18-20cm	RB, DS	4.5-5.0m
Quercus palustris (Qp)	20-25cm	RB, DS	4.5-5.0m
Sorbus aucuparia (Sa)	16-18cm	RB, DS	3.5-4.0m
Sorbus aria (Sa)	18-20cm	RB, DS	4.5-5.0m
Tilia cordata 'Stretelwise' (Tc)	18-20cm	RB, DS	4.5-5.0m

Proposed Multi stem trees and specimen shrubs

Species	Size (height)	Spec	Form	Density
Cornus 'Norman Hadden' (Cn)	multi stem	RB, SS	min 2.5m	
Cotinus coggygria (Cc)	multi stem	RB, SS	1.5-2.0m	
Euconymus europaeus (Eu)	Feathered	RB, SS	min 2m	
Photinia Red Robin (Pr)	Bushy	RB, SS	1.5-2.0m	
Prunus serrula (Ps)	multi stem	RB, SS	min 3.5m	
Sambucus nigra (Sn)	Bushy	RB, SS	1.5-2.0m	
Viburnum opulus (Vo)	Bushy	RB, SS	1.5-2.0m	

Proposed Select & Heavy Standard Trees

Species	Size (girth)	Spec	Height
Betula pendula (Bp)	10-12cm	RB, SS	3-3.5m
Crataegus monogyna (Cm)	feathered	RB, SS	2.5-3.0m
Pinus sylvestris (Ps)	feathered	RB, SS	2.5-3.0m
Salix alba (Sa)	feathered	RB, SS	2.0-2.5m
Salix caprea (Sc)	Multi stem	RB, SS	2.5-3.0m
Carpinus betulus (Cb)	feathered	RB, SS	2.5-3.0m
Ilex Aquifolium (I)	12-14cm	RB, SS	3-3.5m
Prunus avium (Pa)	10-12cm	RB, SS	2.5-3m
Alnus glutinosa (Ag)	feathered	RB, SS	2.5-3.0m
Euconymus europaeus (Eu)	feathered	RB, SS	2.0-2.5m

Notes:
 RB: Rootballed trees
 DS: Double staked (Trees in hard landscape to be underground guyed)
 SS: Single Staked



Proposed Structure Planting

(1 plant per 1.5m² planted randomly within the density, taking care to avoid straight lines within the plantation.)
 All plants fitted with biodegradable spiral guards sized to fit species and stock. 2m width border of edge mix stock planted along the lower northern boundary of the embankment.

Species	Size (height)	Spec	Form	Density
Acer campestre	10%	125-150cm	B 2x	3 breaks, feathered
Betula pendula	10%	125-150cm	B 1+2	
Carpinus betulus	10%	80-100 cm	B 1+1	
Cornus sanguinea	5%	40-60cm	3Lt	Branched 3 brks
Corylus avellana	5%	80-100 cm	B 1+1	Branched 3
Crataegus monogyna	10%	80-100 cm	B 1+1	
Quercus robur	15%	125-150cm	B 1+2	Feathered
Ilex aquifolium	10%	40-60 cm	C 2L	Leader w/ laterals
Ligustrum vulgare	5%	60-80 cm	B 1+1	Branched 3
Sorbus aucuparia	5%	80-100 cm	B 1+1	
Viburnum opulus	5%	60-80 cm	B 1+1	Branched 2
Euconymus europaeus	5%	30-40cm	B 1+1	Branched 3 Brks
Rosa canina	5%	40-60cm	3Lt	Branched 3 brks

Structure Planting Notes:

- Spot spraying of approved herbicides to the base of all plants for the first three years at sufficient intervals to keep weeds suppressed and in accordance with manufacturer's recommendations.
- Ilex aquifolium to be fitted with a 60cm high cut-to-size plastic netting and single bamboo cane such as 'Tubex Tree Guard Mesh for Shrubs' or similar approved.
- Stock to be planted with 75cm spiral guards and single bamboo cane such as 'Tubex Spiral Shelter' or similar approved.
- Area of ground to be wing line ripped prior to planting.
- Bare root trees to be notch planted. If other methods to be proposed, agree with CA prior to work commencing.
- Planting to be undertaken November - February inclusive.



Proposed hedge planting

Species	Ht	Spec	Form	Density
Carpinus betulus	100-125	BR 2x	Feathered	8 plants/m
Taxus baccata	100-125	RB	Bushy	5 plants/m
Viburnum tinus	90-100	10L	Bushy	5 plants/m
Prunus lusitana	100-125	RB	Bushy	5 plants/m

Mixed Native Hedgerow

Species	Size (height)	Spec	Form	Grouping
Acer campestre (10%)	100-125cm	BR 2x	feathered	2-3
Corylus avellana (20%)	40-60 cm	BR	branched, 2brks	5-10
Crataegus monogyna (20%)	100-125cm	BR 2x	feathered	5-10
Ilex aquifolium (10%)	40-60 cm	3Lt	leader & laterals	1-3
Ligustrum vulgare (10%)	60-80 cm	BR 1+1	branched 3brks	3-5
Prunus spinosa (10%)	40-60 cm	BR 1+1	branched 2brks	5-10
Rosa canina (10%)	40-60 cm	BR 1+1		2-3
Viburnum opulus (10%)	40-60 cm	BR 1+1	branched 2brks	3-5

Lonicera periclymenum 30-40cm 3Lt
 To be planted within mixed native hedgerow in groups of 2-3 at random intervals between 2 and 5 metres

Notes:

- Hedge to be planted in double staggered rows 250mm apart. Stock to be planted at 500mm centres along the rows. In random species grouping.
- Planted in double staggered rows 300mm apart, 400mm centres along rows.
- Plants to be tipped out by 150mm on planting to encourage bushy growth



Proposed ornamental shrub, herbaceous and grass planting

Palette 1

Species	Size (height)	Spec	Density	Form
Cornus sanguinea 'MWF'	40-60cm	3L Pot	4m²	Branched
Chryslia temata 'MOC'	40-60cm	3L Pot	5m²	Bushy
Escallonia 'Apple Blossom'	40-60cm	3L Pot	3m²	Bushy
Euconymus fortunei 'Dart's Blanket'	30-40cm	3L Pot	5m²	Bushy
Hebe 'Great Orme'	40-60cm	3L Pot	5m²	Bushy
Hebe 'Kaukaianis'	40-60cm	3L Pot	5m²	Bushy
Hydrangea aborescens 'Annabelle'	40-60cm	3L pot	4m²	Branched
Ilex crenata 'Compacta'	40-60cm	3L Pot	5m²	Bushy
Lavandula x intermedia 'Grosso'	40-60cm	3L Pot	5m²	Bushy
Lonicera pileata 'May Green'	40-60cm	3L Pot	4m²	Bushy
Perovskia 'Blue Spire'	30-40cm	3L Pot	5m²	Bushy
Pittosporum tenuifolium	40-60cm	3L Pot	4m²	Bushy
Pittosporum tobira 'Nanum'	40-60cm	3L Pot	5m²	Bushy
Potentilla 'Abbotswood'	40-60cm	3L Pot	5m²	Bushy
Prunus 'Otto Luyken'	40-60cm	3L Pot	4m²	Bushy
Rosmarinus officinalis prostratus	40-60cm	3L Pot	4m²	Bushy
Spiraea japonica 'Magic Carpet'	40-60cm	3L Pot	4m²	Bushy
Viburnum davidii	40-60cm	3L Pot	5m²	Bushy

Proposed Perennial Planting

Species	Spec	Density	Form
Agastace 'Blue Fortune'	3L Pot	6m²	Bushy
Anemone x hybrida 'Honorine Jobert'	3L Pot	5m²	Clump-forming
Ajuga reptans	2L Pot	6m²	Mat-forming
Bergenia cordifolia	2L Pot	6m²	Bushy
Carex oshimensis 'Evergreen'	2L Pot	5m²	Clump-forming
Gaura lindheimeri	3L pot	6m²	Mat-forming
Geranium macranthum	2L pot	5m²	Clump-forming
Heuchera sanguinea 'Ruby Bells'	2L Pot	5m²	Clump-forming
Liriope muscari 'Big Blue'	2L Pot	5m²	Clump-forming
Persicaria affinis	2L Pot	6m²	Mat-forming
Polystichum setiferum 'Herrenhausen'	3L Pot	5m²	Bushy
Polypodium vulgare	2L Pot	7m²	Bushy
Sedum spectabile	3L Pot	7m²	Clump-forming
Stachys byzantina 'Big Ears'	3L Pot	5m²	Mat-forming
Trachyspermum orientalis	3L Pot	5m²	Mat-forming
Verbena bonariensis	3L Pot	5m²	Branched

Grasses & Ferns

Calamagrostis 'KF'	3L Pot	5m²	Bushy
Deschampsia cespitosa	3L Pot	7m²	Bushy
Miscanthus sinensis 'Morning Light'	3L Pot	6m²	Tufted
Molinia caerulea 'Transparent'	3L Pot	6m²	Bushy
Ophiopogon japonicus	3L Pot	7m²	Bushy
Pennisetum alopecuroides	3L Pot	5m²	Bushy
Sesleria autumnalis	3L Pot	6m²	Bushy
Stipa tenuissima	3L Pot	6m²	Tufted



Proposed ornamental shrub, herbaceous and grass planting Palette 2:

Lowland Heath species and ornamental grasses planted in groups amongst areas seeded with Emorsgate Seeds EM2 Standard General Purpose Meadow Mixture

Species	Size (height)	Spec	Density	Form
Calluna vulgaris	15-20cm	2L1	7m²	bushy 5 brks
Cytisus scoparius				
Erica cinerea	15-20cm	2L1	7m²	bushy 5 brks
Erica vagans	15-20cm	2L1	7m²	bushy 5 brks
Ulex gallii	15-20cm	2L1	7m²	bushy 5 brks

Perennials, Grasses & Ferns

Briza 'Golden Bee'	3L Pot	5m²	Bushy
Carex pendula	3L Pot	5m²	Bushy
Deschampsia cespitosa	3L Pot	5m²	Bushy
Miscanthus sinensis 'Morning Light'	3L Pot	5m²	Tufted
Molinia caerulea 'Transparent'	3L Pot	5m²	Bushy
Molinia Skyracer	3L Pot	5m²	Bushy
Luzula mees	3L Pot	5m²	Bushy
Pennisetum alopecuroides	3L Pot	5m²	Bushy
Polystichum setiferum 'Herrenhausen'	3L Pot	5m²	Bushy
Polypodium vulgare	2L Pot	7m²	Bushy



Proposed amenity grass
 Turf to be general amenity turf by Tillers Turf Company Ltd or equivalent



Proposed meadow grass managed for nature conservation.
 Special General Purpose Meadow mixture EM3 by Emorsgate Seeds or equivalent.



Proposed meadow grass for wetlands.
 EM6 by Emorsgate Seeds or equivalent.



Bulb planting
 Narcissus pseudonarcissus Size: 6+ Density: 10 bulbs/m²



Marginal Mix Plant List

Species:	Common Name	Spec	Density	%
Carex hirta	Hairy Sedge	9 cm	7m²	15%
Carex paniculata	Greater Tussock Sedge	9 cm	7m²	5%
Caltha palustris	Marsh Marigold	root trainer	7m²	10%
Iris pseudacorus	Yellow Iris	2Ltr	5m²	20%
Mentha aquatica	Water Mint	plug	9m²	5%
Myosotis scorpioides	Water Forget-me-not	plug	9m²	5%
Lythrum salicaria	Loosestrife	plug	9m²	5%
Persicaria amphibia	Amphibious Bistort	root trainer	7m²	5%
Potentilla palustris	Marsh Cinquefoil	root trainer	7m²	5%
Sagittaria sagittifolia	Arrowhead	root trainer	7m²	5%
Sparganium emersum	Unbranched bur-reed	root trainer	7m²	10%
Juncus effusus	Soft rush	root trainer	7m²	10%

All plugs to be planted in informal, one-species groups of 7-25 plants.

APPENDIX 5

Individual Tree Condition Assessments

Tree No.	Tree Size	Retained or Lost	1 - Tree is native.	2 - Canopy is continuous. Individual trees automatically pass this criterion.	3 - Tree is mature.	4 - Little or no evidence of adverse impact on tree health.	5 - Natural ecological niches are present.	6 - More than 20% of canopy oversails vegetation beneath.	Condition criteria passed (out of 6)	Condition Score
76	Small	Retained	Pass	Pass	Fail	Pass	Fail	Fail	3	Moderate
77	Small	Retained	Pass	Pass	Fail	Pass	Fail	Fail	3	Moderate
78	Small	Retained	Pass	Pass	Fail	Pass	Fail	Fail	3	Moderate
79	Small	Retained	Pass	Pass	Fail	Pass	Fail	Fail	3	Moderate
80	Small	Retained	Fail	Pass	Fail	Pass	Fail	Fail	2	Poor
81	Small	Retained	Fail	Pass	Fail	Pass	Fail	Fail	2	Poor
93	Small	Retained	Pass	Pass	Fail	Fail	Pass	Pass	4	Moderate
101	Small	Retained	Pass	Pass	Fail	Fail	Pass	Pass	4	Moderate
117	Small	Retained	Fail	Pass	Fail	Pass	Fail	Pass	3	Moderate
176	Small	Lost	Pass	Pass	Fail	Pass	Fail	Pass	4	Moderate
178	Small	Lost	Fail	Pass	Fail	Pass	Pass	Pass	4	Moderate
179	Small	Lost	Fail	Pass	Fail	Pass	Pass	Pass	4	Moderate
182	Small	Lost	Fail	Pass	Fail	Pass	Fail	Pass	3	Moderate
195	Small	Lost	Fail	Pass	Fail	Pass	Fail	Fail	2	Poor
198	Small	Lost	Fail	Pass	Fail	Fail	Pass	Pass	3	Moderate
199	Small	Lost	Pass	Pass	Fail	Fail	Fail	Pass	3	Moderate
207	Small	Retained	Pass	Pass	Fail	Pass	Fail	Pass	4	Moderate
216	Small	Retained	Fail	Pass	Fail	Fail	Fail	Pass	2	Poor
217	Small	Retained	Fail	Pass	Fail	Pass	Fail	Pass	3	Moderate
220	Small	Retained	Fail	Pass	Fail	Fail	Fail	Pass	2	Poor
221	Small	Retained	Fail	Pass	Fail	Fail	Fail	Pass	2	Poor
227	Small	Lost	Fail	Pass	Fail	Pass	Pass	Pass	4	Moderate
228	Small	Lost	Fail	Pass	Fail	Pass	Fail	Pass	3	Moderate
229	Small	Lost	Fail	Pass	Fail	Pass	Fail	Pass	3	Moderate
230	Small	Lost	Pass	Pass	Fail	Fail	Fail	Pass	3	Moderate
231	Small	Lost	Pass	Pass	Fail	Fail	Fail	Pass	3	Moderate
232	Small	Lost	Fail	Pass	Fail	Fail	Pass	Pass	3	Moderate
233	Small	Lost	Fail	Pass	Fail	Fail	Pass	Pass	3	Moderate
234	Small	Lost	Fail	Pass	Fail	Fail	Fail	Pass	2	Poor
235	Small	Lost	Fail	Pass	Fail	Fail	Fail	Pass	2	Poor
236	Small	Lost	Fail	Pass	Fail	Fail	Fail	Pass	2	Poor

Tree No.	Tree Size	Retained or Lost	1 - Tree is native.	2 - Canopy is continuous. Individual trees automatically pass this criterion.	3 - Tree is mature.	4 - Little or no evidence of adverse impact on tree health.	5 - Natural ecological niches are present.	6 - More than 20% of canopy oversails vegetation beneath.	Condition criteria passed (out of 6)	Condition Score
237	Small	Lost	Pass	Pass	Fail	Pass	Fail	Pass	4	Moderate
238	Small	Lost	Pass	Pass	Fail	Fail	Fail	Pass	3	Moderate
243	Small	Lost	Pass	Pass	Fail	Fail	Fail	Pass	3	Moderate
245	Small	Lost	Fail	Pass	Fail	Pass	Pass	Pass	4	Moderate
249	Small	Lost	Fail	Pass	Fail	Fail	Pass	Pass	3	Moderate
250	Small	Lost	Pass	Pass	Fail	Pass	Fail	Pass	4	Moderate
251	Small	Lost	Pass	Pass	Fail	Pass	Fail	Pass	4	Moderate
252	Small	Lost	Pass	Pass	Fail	Pass	Fail	Pass	4	Moderate
274	Small	Retained	Pass	Pass	Fail	Pass	Fail	Pass	4	Moderate
275	Small	Lost	Pass	Pass	Fail	Pass	Fail	Pass	4	Moderate
276	Small	Lost	Pass	Pass	Fail	Pass	Fail	Pass	4	Moderate
278	Small	Lost	Fail	Pass	Fail	Fail	Pass	Pass	3	Moderate
279	Small	Lost	Pass	Pass	Fail	Pass	Fail	Pass	4	Moderate
280	Small	Lost	Pass	Pass	Fail	Pass	Fail	Pass	4	Moderate
283	Small	Lost	Pass	Pass	Fail	Pass	Fail	Pass	4	Moderate
289	Small	Lost	Pass	Pass	Fail	Pass	Pass	Pass	5	Good
294	Small	Lost	Pass	Pass	Fail	Pass	Fail	Pass	4	Moderate
304	Small	Retained	Fail	Pass	Fail	Pass	Fail	Pass	3	Moderate
318	Small	Retained	Fail	Pass	Fail	Pass	Fail	Pass	3	Moderate
403	Small	Retained	Fail	Pass	Fail	Pass	Fail	Pass	3	Moderate
406	Small	Retained	Fail	Pass	Fail	Fail	Fail	Pass	2	Poor
408	Small	Retained	Fail	Pass	Fail	Fail	Fail	Pass	2	Poor
410	Small	Retained	Fail	Pass	Fail	Pass	Fail	Pass	3	Moderate
412	Small	Retained	Fail	Pass	Fail	Pass	Pass	Pass	4	Moderate
441	Small	Retained	Fail	Pass	Fail	Fail	Fail	Pass	2	Poor
461	Small	Retained	Fail	Pass	Fail	Pass	Fail	Pass	3	Moderate
488	Small	Lost	Pass	Pass	Fail	Pass	Fail	Pass	4	Moderate
494	Small	Retained	Fail	Pass	Fail	Fail	Fail	Pass	2	Poor
521	Small	Lost	Pass	Pass	Fail	Pass	Fail	Pass	4	Moderate
522	Small	Lost	Pass	Pass	Fail	Pass	Fail	Pass	4	Moderate
523	Small	Lost	Pass	Pass	Fail	Pass	Fail	Pass	4	Moderate

Tree No.	Tree Size	Retained or Lost	1 - Tree is native.	2 - Canopy is continuous. Individual trees automatically pass this criterion.	3 - Tree is mature.	4 - Little or no evidence of adverse impact on tree health.	5 - Natural ecological niches are present.	6 - More than 20% of canopy oversails vegetation beneath.	Condition criteria passed (out of 6)	Condition Score
527	Small	Lost	Fail	Pass	Fail	Pass	Fail	Pass	3	Moderate
535	Small	Lost	Fail	Pass	Fail	Pass	Fail	Pass	3	Moderate
540	Small	Retained	Fail	Pass	Fail	Pass	Fail	Pass	3	Moderate
541	Small	Lost	Pass	Pass	Fail	Pass	Fail	Pass	4	Moderate
542	Small	Lost	Fail	Pass	Fail	Pass	Fail	Pass	3	Moderate
555	Small	Retained	Pass	Pass	Fail	Fail	Fail	Pass	3	Moderate
556	Small	Retained	Fail	Pass	Fail	Fail	Fail	Pass	2	Poor
1	Medium	Retained	Pass	Pass	Pass	Fail	Pass	Pass	5	Good
2	Medium	Retained	Pass	Pass	Pass	Fail	Pass	Pass	5	Good
3	Medium	Retained	Pass	Pass	Pass	Fail	Pass	Pass	5	Good
4	Medium	Retained	Pass	Pass	Pass	Fail	Pass	Pass	5	Good
5	Medium	Retained	Pass	Pass	Pass	Fail	Pass	Pass	5	Good
6	Medium	Retained	Pass	Pass	Pass	Pass	Pass	Pass	6	Good
7	Medium	Retained	Pass	Pass	Pass	Fail	Pass	Pass	5	Good
8	Medium	Retained	Pass	Pass	Fail	Fail	Pass	Pass	4	Moderate
9	Medium	Retained	Pass	Pass	Fail	Fail	Pass	Pass	4	Moderate
10	Medium	Retained	Pass	Pass	Fail	Fail	Pass	Pass	4	Moderate
11	Medium	Retained	Pass	Pass	Fail	Fail	Pass	Pass	4	Moderate
12	Medium	Retained	Pass	Pass	Pass	Fail	Pass	Pass	5	Good
14	Medium	Retained	Pass	Pass	Fail	Fail	Fail	Pass	3	Moderate
15	Medium	Retained	Pass	Pass	Fail	Fail	Fail	Pass	3	Moderate
16	Medium	Retained	Pass	Pass	Fail	Fail	Fail	Pass	3	Moderate
17	Medium	Retained	Fail	Pass	Fail	Fail	Pass	Pass	3	Moderate
22	Medium	Retained	Pass	Pass	Fail	Fail	Fail	Pass	3	Moderate
23	Medium	Retained	Pass	Pass	Fail	Fail	Fail	Pass	3	Moderate
24	Medium	Retained	Pass	Pass	Fail	Fail	Fail	Pass	3	Moderate
25	Medium	Retained	Pass	Pass	Fail	Pass	Fail	Pass	4	Moderate
26	Medium	Retained	Pass	Pass	Fail	Fail	Fail	Pass	3	Moderate
27	Medium	Retained	Pass	Pass	Pass	Fail	Pass	Pass	5	Good
28	Medium	Retained	Pass	Pass	Pass	Fail	Pass	Pass	5	Good
29	Medium	Retained	Pass	Pass	Pass	Fail	Pass	Pass	5	Good

Tree No.	Tree Size	Retained or Lost	1 - Tree is native.	2 - Canopy is continuous. Individual trees automatically pass this criterion.	3 - Tree is mature.	4 - Little or no evidence of adverse impact on tree health.	5 - Natural ecological niches are present.	6 - More than 20% of canopy oversails vegetation beneath.	Condition criteria passed (out of 6)	Condition Score
30	Medium	Retained	Pass	Pass	Pass	Fail	Pass	Pass	5	Good
31	Medium	Retained	Pass	Pass	Fail	Fail	Fail	Pass	3	Moderate
60	Medium	Lost	Pass	Pass	Fail	Pass	Fail	Fail	3	Moderate
75	Medium	Retained	Fail	Pass	Pass	Pass	Fail	Pass	4	Moderate
82	Medium	Retained	Fail	Pass	Fail	Fail	Fail	Fail	1	Poor
83	Medium	Retained	Pass	Pass	Pass	Fail	Pass	Pass	5	Good
84	Medium	Retained	Pass	Pass	Pass	Fail	Pass	Pass	5	Good
85	Medium	Retained	Pass	Pass	Fail	Pass	Fail	Pass	4	Moderate
86	Medium	Retained	Pass	Pass	Fail	Pass	Fail	Pass	4	Moderate
87	Medium	Retained	Pass	Pass	Pass	Pass	Fail	Pass	5	Good
88	Medium	Retained	Pass	Pass	Pass	Fail	Pass	Pass	5	Good
89	Medium	Retained	Pass	Pass	Pass	Fail	Pass	Pass	5	Good
90	Medium	Retained	Pass	Pass	Pass	Fail	Pass	Pass	5	Good
91	Medium	Retained	Pass	Pass	Fail	Fail	Pass	Pass	4	Moderate
92	Medium	Retained	Pass	Pass	Fail	Fail	Pass	Pass	4	Moderate
94	Medium	Retained	Pass	Pass	Fail	Fail	Pass	Fail	3	Moderate
96	Medium	Retained	Pass	Pass	Pass	Fail	Pass	Fail	4	Moderate
97	Medium	Retained	Pass	Pass	Pass	Pass	Fail	Fail	4	Moderate
98	Medium	Retained	Pass	Pass	Fail	Fail	Fail	Fail	2	Poor
99	Medium	Retained	Pass	Pass	Pass	Fail	Fail	Pass	4	Moderate
100	Medium	Retained	Pass	Pass	Pass	Fail	Fail	Pass	4	Moderate
102	Medium	Retained	Pass	Pass	Fail	Fail	Pass	Pass	4	Moderate
104	Medium	Retained	Fail	Pass	Fail	Pass	Fail	Pass	3	Moderate
105	Medium	Retained	Fail	Pass	Fail	Pass	Fail	Pass	3	Moderate
121	Medium	Retained	Pass	Pass	Fail	Fail	Pass	Pass	4	Moderate
122	Medium	Retained	Pass	Pass	Fail	Fail	Pass	Pass	4	Moderate
123	Medium	Retained	Pass	Pass	Pass	Fail	Pass	Pass	5	Good
124	Medium	Retained	Fail	Pass	Fail	Fail	Pass	Pass	3	Moderate
125	Medium	Retained	Fail	Pass	Pass	Fail	Pass	Pass	4	Moderate
126	Medium	Retained	Fail	Pass	Fail	Fail	Pass	Pass	3	Moderate
127	Medium	Retained	Pass	Pass	Pass	Fail	Pass	Pass	5	Good

Tree No.	Tree Size	Retained or Lost	1 - Tree is native.	2 - Canopy is continuous. Individual trees automatically pass this criterion.	3 - Tree is mature.	4 - Little or no evidence of adverse impact on tree health.	5 - Natural ecological niches are present.	6 - More than 20% of canopy oversails vegetation beneath.	Condition criteria passed (out of 6)	Condition Score
128	Medium	Retained	Pass	Pass	Pass	Fail	Pass	Pass	5	Good
129	Medium	Retained	Pass	Pass	Fail	Fail	Fail	Pass	3	Moderate
130	Medium	Retained	Fail	Pass	Fail	Pass	Fail	Pass	3	Moderate
131	Medium	Retained	Fail	Pass	Pass	Fail	Fail	Pass	3	Moderate
132	Medium	Retained	Fail	Pass	Fail	Pass	Fail	Pass	3	Moderate
133	Medium	Retained	Fail	Pass	Fail	Fail	Fail	Fail	1	Poor
134	Medium	Retained	Fail	Pass	Fail	Fail	Fail	Fail	1	Poor
135	Medium	Retained	Fail	Pass	Fail	Fail	Fail	Fail	1	Poor
140	Medium	Retained	Fail	Pass	Fail	Pass	Fail	Pass	3	Moderate
166	Medium	Retained	Fail	Pass	Fail	Pass	Fail	Pass	3	Moderate
169	Medium	Retained	Fail	Pass	Fail	Fail	Fail	Pass	2	Poor
170	Medium	Retained	Pass	Pass	Pass	Fail	Pass	Pass	5	Good
174	Medium	Retained	Pass	Pass	Pass	Pass	Pass	Pass	6	Good
177	Medium	Lost	Fail	Pass	Fail	Pass	Pass	Pass	4	Moderate
180	Medium	Lost	Pass	Pass	Fail	Fail	Fail	Pass	3	Moderate
181	Medium	Lost	Pass	Pass	Fail	Fail	Fail	Pass	3	Moderate
183	Medium	Lost	Fail	Pass	Fail	Fail	Pass	Pass	3	Moderate
185	Medium	Lost	Fail	Pass	Pass	Fail	Fail	Fail	2	Poor
187	Medium	Lost	Fail	Pass	Pass	Fail	Fail	Pass	3	Moderate
188	Medium	Lost	Fail	Pass	Pass	Fail	Fail	Pass	3	Moderate
189	Medium	Lost	Fail	Pass	Pass	Fail	Fail	Pass	3	Moderate
190	Medium	Lost	Fail	Pass	Pass	Fail	Fail	Pass	3	Moderate
196	Medium	Lost	Pass	Pass	Fail	Fail	Pass	Pass	4	Moderate
200	Medium	Lost	Pass	Pass	Fail	Fail	Fail	Pass	3	Moderate
202	Medium	Lost	Fail	Pass	Pass	Fail	Pass	Pass	4	Moderate
204	Medium	Retained	Pass	Pass	Pass	Pass	Pass	Pass	6	Good
205	Medium	Retained	Pass	Pass	Pass	Pass	Pass	Pass	6	Good
206	Medium	Retained	Fail	Pass	Fail	Pass	Pass	Pass	4	Moderate
208	Medium	Retained	Fail	Pass	Pass	Fail	Pass	Pass	4	Moderate
209	Medium	Retained	Fail	Pass	Pass	Fail	Pass	Pass	4	Moderate
210	Medium	Retained	Fail	Pass	Pass	Fail	Pass	Pass	4	Moderate

Tree No.	Tree Size	Retained or Lost	1 - Tree is native.	2 - Canopy is continuous. Individual trees automatically pass this criterion.	3 - Tree is mature.	4 - Little or no evidence of adverse impact on tree health.	5 - Natural ecological niches are present.	6 - More than 20% of canopy oversails vegetation beneath.	Condition criteria passed (out of 6)	Condition Score
297	Medium	Lost	Pass	Pass	Pass	Fail	Pass	Pass	5	Good
298	Medium	Lost	Fail	Pass	Pass	Pass	Fail	Pass	4	Moderate
317	Medium	Retained	Pass	Pass	Fail	Pass	Pass	Pass	5	Good
319	Medium	Lost	Fail	Pass	Pass	Fail	Fail	Fail	2	Poor
320	Medium	Lost	Fail	Pass	Pass	Fail	Fail	Fail	2	Poor
401	Medium	Retained	Fail	Pass	Pass	Fail	Pass	Fail	3	Moderate
402	Medium	Retained	Fail	Pass	Fail	Fail	Pass	Pass	3	Moderate
405	Medium	Retained	Fail	Pass	Fail	Fail	Fail	Pass	2	Poor
409	Medium	Retained	Fail	Pass	Fail	Fail	Fail	Pass	2	Poor
411	Medium	Retained	Fail	Pass	Pass	Pass	Fail	Pass	4	Moderate
417	Medium	Retained	Pass	Pass	Pass	Fail	Pass	Fail	4	Moderate
418	Medium	Retained	Pass	Pass	Pass	Fail	Fail	Fail	3	Moderate
419	Medium	Retained	Pass	Pass	Pass	Fail	Pass	Pass	5	Good
420	Medium	Retained	Fail	Pass	Pass	Fail	Pass	Pass	4	Moderate
421	Medium	Retained	Pass	Pass	Fail	Fail	Pass	Pass	4	Moderate
424	Medium	Retained	Fail	Pass	Fail	Fail	Fail	Pass	2	Poor
425	Medium	Retained	Fail	Pass	Fail	Fail	Fail	Pass	2	Poor
426	Medium	Retained	Fail	Pass	Fail	Fail	Fail	Pass	2	Poor
427	Medium	Retained	Pass	Pass	Fail	Fail	Fail	Pass	3	Moderate
428	Medium	Retained	Fail	Pass	Fail	Fail	Fail	Pass	2	Poor
429	Medium	Retained	Fail	Pass	Fail	Fail	Fail	Pass	2	Poor
430	Medium	Retained	Fail	Pass	Fail	Fail	Fail	Pass	2	Poor
431	Medium	Retained	Fail	Pass	Fail	Fail	Fail	Pass	2	Poor
432	Medium	Retained	Fail	Pass	Fail	Fail	Fail	Pass	2	Poor
433	Medium	Retained	Pass	Pass	Fail	Fail	Fail	Pass	3	Moderate
434	Medium	Retained	Pass	Pass	Fail	Fail	Fail	Pass	3	Moderate
435	Medium	Retained	Pass	Pass	Fail	Pass	Fail	Fail	3	Moderate
436	Medium	Retained	Pass	Pass	Fail	Fail	Fail	Pass	3	Moderate
437	Medium	Retained	Pass	Pass	Fail	Pass	Pass	Pass	5	Good
442	Medium	Retained	Fail	Pass	Fail	Fail	Pass	Pass	3	Moderate
447	Medium	Retained	Fail	Pass	Pass	Pass	Fail	Pass	4	Moderate

Tree No.	Tree Size	Retained or Lost	1 - Tree is native.	2 - Canopy is continuous. Individual trees automatically pass this criterion.	3 - Tree is mature.	4 - Little or no evidence of adverse impact on tree health.	5 - Natural ecological niches are present.	6 - More than 20% of canopy oversails vegetation beneath.	Condition criteria passed (out of 6)	Condition Score
448	Medium	Retained	Fail	Pass	Pass	Pass	Fail	Pass	4	Moderate
459	Medium	Retained	Fail	Pass	Pass	Fail	Fail	Pass	3	Moderate
460	Medium	Retained	Fail	Pass	Pass	Fail	Fail	Pass	3	Moderate
483	Medium	Retained	Fail	Pass	Fail	Fail	Fail	Pass	2	Poor
484	Medium	Retained	Fail	Pass	Fail	Fail	Fail	Pass	2	Poor
485	Medium	Retained	Fail	Pass	Fail	Fail	Fail	Pass	2	Poor
486	Medium	Lost	Fail	Pass	Fail	Pass	Pass	Pass	4	Moderate
487	Medium	Lost	Fail	Pass	Fail	Pass	Pass	Pass	4	Moderate
489	Medium	Lost	Fail	Pass	Fail	Pass	Fail	Pass	3	Moderate
490	Medium	Lost	Fail	Pass	Pass	Pass	Fail	Pass	4	Moderate
491	Medium	Lost	Fail	Pass	Fail	Fail	Pass	Pass	3	Moderate
495	Medium	Retained	Pass	Pass	Fail	Pass	Fail	Pass	4	Moderate
507	Medium	Retained	Pass	Pass	Pass	Fail	Fail	Pass	4	Moderate
508	Medium	Retained	Pass	Pass	Fail	Fail	Fail	Pass	3	Moderate
511	Medium	Lost	Pass	Pass	Fail	Fail	Fail	Pass	3	Moderate
512	Medium	Retained	Pass	Pass	Fail	Fail	Fail	Pass	3	Moderate
513	Medium	Retained	Pass	Pass	Fail	Fail	Fail	Pass	3	Moderate
515	Medium	Lost	Fail	Pass	Fail	Fail	Fail	Pass	2	Poor
516	Medium	Lost	Fail	Pass	Fail	Pass	Fail	Pass	3	Moderate
517	Medium	Lost	Pass	Pass	Fail	Fail	Fail	Pass	3	Moderate
518	Medium	Lost	Fail	Pass	Fail	Fail	Fail	Pass	2	Poor
519	Medium	Lost	Fail	Pass	Fail	Fail	Pass	Pass	3	Moderate
520	Medium	Lost	Fail	Pass	Fail	Pass	Fail	Pass	3	Moderate
524	Medium	Lost	Fail	Pass	Fail	Pass	Pass	Pass	4	Moderate
531	Medium	Lost	Fail	Pass	Fail	Pass	Fail	Pass	3	Moderate
534	Medium	Lost	Fail	Pass	Fail	Pass	Fail	Pass	3	Moderate
536	Medium	Lost	Fail	Pass	Fail	Pass	Pass	Pass	4	Moderate
537	Medium	Retained	Fail	Pass	Fail	Fail	Fail	Pass	2	Poor
538	Medium	Retained	Fail	Pass	Fail	Pass	Fail	Pass	3	Moderate
544	Medium	Lost	Fail	Pass	Fail	Pass	Fail	Pass	3	Moderate
545	Medium	Lost	Fail	Pass	Fail	Pass	Fail	Pass	3	Moderate

Tree No.	Tree Size	Retained or Lost	1 - Tree is native.	2 - Canopy is continuous. Individual trees automatically pass this criterion.	3 - Tree is mature.	4 - Little or no evidence of adverse impact on tree health.	5 - Natural ecological niches are present.	6 - More than 20% of canopy oversails vegetation beneath.	Condition criteria passed (out of 6)	Condition Score
546	Medium	Lost	Fail	Pass	Fail	Pass	Pass	Pass	4	Moderate
547	Medium	Lost	Fail	Pass	Fail	Pass	Fail	Pass	3	Moderate
548	Medium	Lost	Fail	Pass	Fail	Pass	Fail	Pass	3	Moderate
549	Medium	Lost	Fail	Pass	Fail	Pass	Fail	Pass	3	Moderate
550	Medium	Retained	Pass	Pass	Pass	Pass	Fail	Pass	5	Good
551	Medium	Retained	Pass	Pass	Fail	Fail	Fail	Pass	3	Moderate
552	Medium	Retained	Pass	Pass	Pass	Fail	Fail	Pass	4	Moderate
553	Medium	Retained	Pass	Pass	Fail	Fail	Fail	Pass	3	Moderate
554	Medium	Retained	Pass	Pass	Fail	Fail	Fail	Pass	3	Moderate
13	Large	Retained	Pass	Pass	Pass	Fail	Pass	Pass	5	Good
118	Large	Lost	Fail	Pass	Fail	Fail	Pass	Fail	2	Poor
184	Large	Lost	Fail	Pass	Pass	Fail	Fail	Pass	3	Moderate
186	Large	Lost	Fail	Pass	Pass	Fail	Fail	Pass	3	Moderate
291	Large	Lost	Fail	Pass	Fail	Pass	Fail	Pass	3	Moderate
292	Large	Lost	Fail	Pass	Fail	Pass	Fail	Pass	3	Moderate
404	Large	Retained	Fail	Pass	Pass	Pass	Fail	Pass	4	Moderate
407	Large	Retained	Fail	Pass	Fail	Fail	Fail	Pass	2	Poor
422	Large	Retained	Pass	Pass	Pass	Fail	Pass	Pass	5	Good
514	Large	Lost	Fail	Pass	Fail	Pass	Pass	Pass	4	Moderate
543	Large	Lost	Fail	Pass	Pass	Fail	Pass	Pass	4	Moderate



ECOLOGYSOLUTIONS

Part of the ES Group

Ecology Solutions Limited | Cokenach Estate | Barkway | Royston | Hertfordshire | SG8 8DL

01763 848084 | east@ecologysolutions.co.uk | www.ecologysolutions.co.uk