

NKS/KM/22-168

Vers 2 – Jan 2024

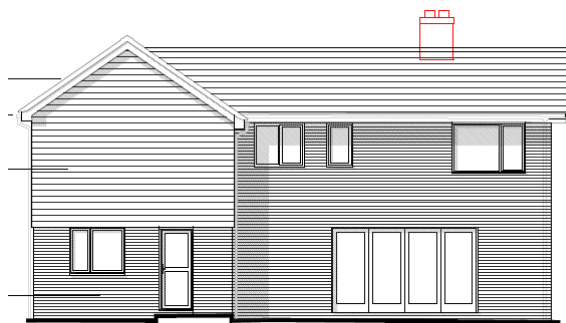
Lighting Statement

1 Carters Way, Wisborough Green, Billingshurst, RH14 0BX

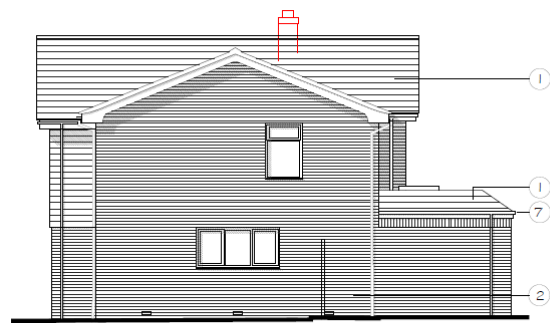
Introduction

MH Architects Limited have been asked to write a lighting assessment to support a householder planning application at 1 Carters Way, Wisborough Green, Billingshurst, RH14 0BX on behalf of our private clients.

The application for a single and two storey extension to the existing residential dwelling along with associated external works.



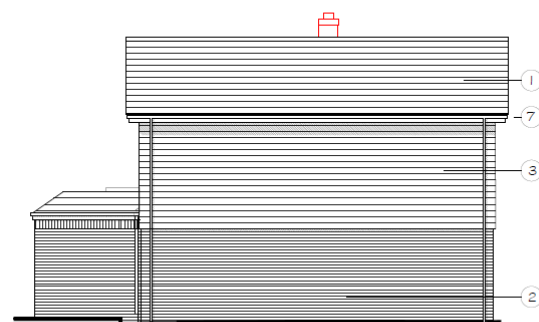
REAR ELEVATION



SIDE ELEVATION



FRONT ELEVATION - Opt 2

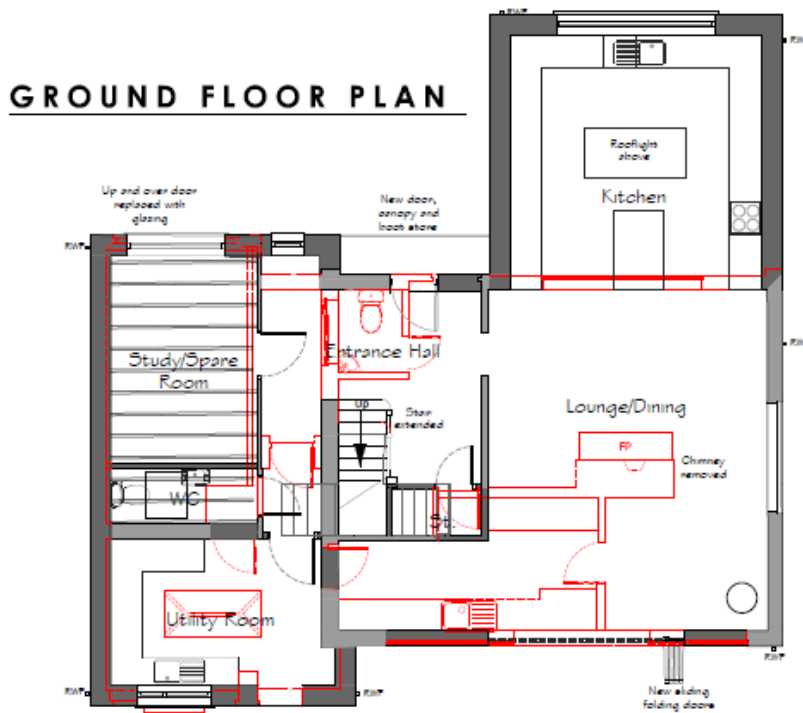
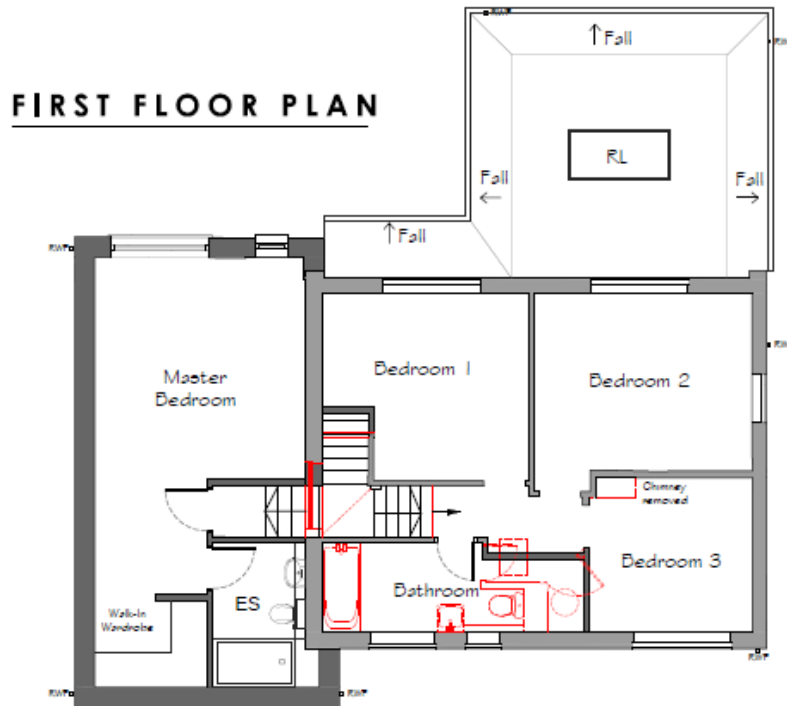


SIDE ELEVATION

Proposed elevations (not to scale)

Lighting Statement

The proposals do not include external lighting to the front or rear of the property, however there is a skylight proposed to the kitchen.



Proposed floor plans (not to scale)

To avoid light pollution spilling into the night sky, the kitchen skylight will include a built in black out blind, This will be closed from dusk, ensuring the proposals meet the requirements of Strategic Policy SD8 Dark Night Skies

Light pollution has been considered in the design process, and where possible, positive improvements have been made with minimal negative impacts on the natural environment.

MH Architects