

1 Ground Floor - Existing  
Scale: 1:50

A complete set of kitchen facilities consisting of the following items must be provided for every five persons:

**Sink:**  
A stainless steel sink, integral drainer and a tiled splash-back, on a base unit. The sink must have constant supplies of hot and cold running water and be properly connected to the drains. The cold water must come directly from the rising water main. It must be possible to stand directly in front of the sink and to place utensils down on both sides of each.

**Cooker:**  
A gas or electric cooker with four ring burners, oven and grill, that are capable of simultaneous use. The cooker is to be located away from doorways with a minimum of 300mm worktop to both sides and must be possible to stand directly in front of.

**Electrical sockets:**  
At least three double 13amp electrical power points (in addition to those used for fixed appliances, such as washing machines/dishwashers etc).

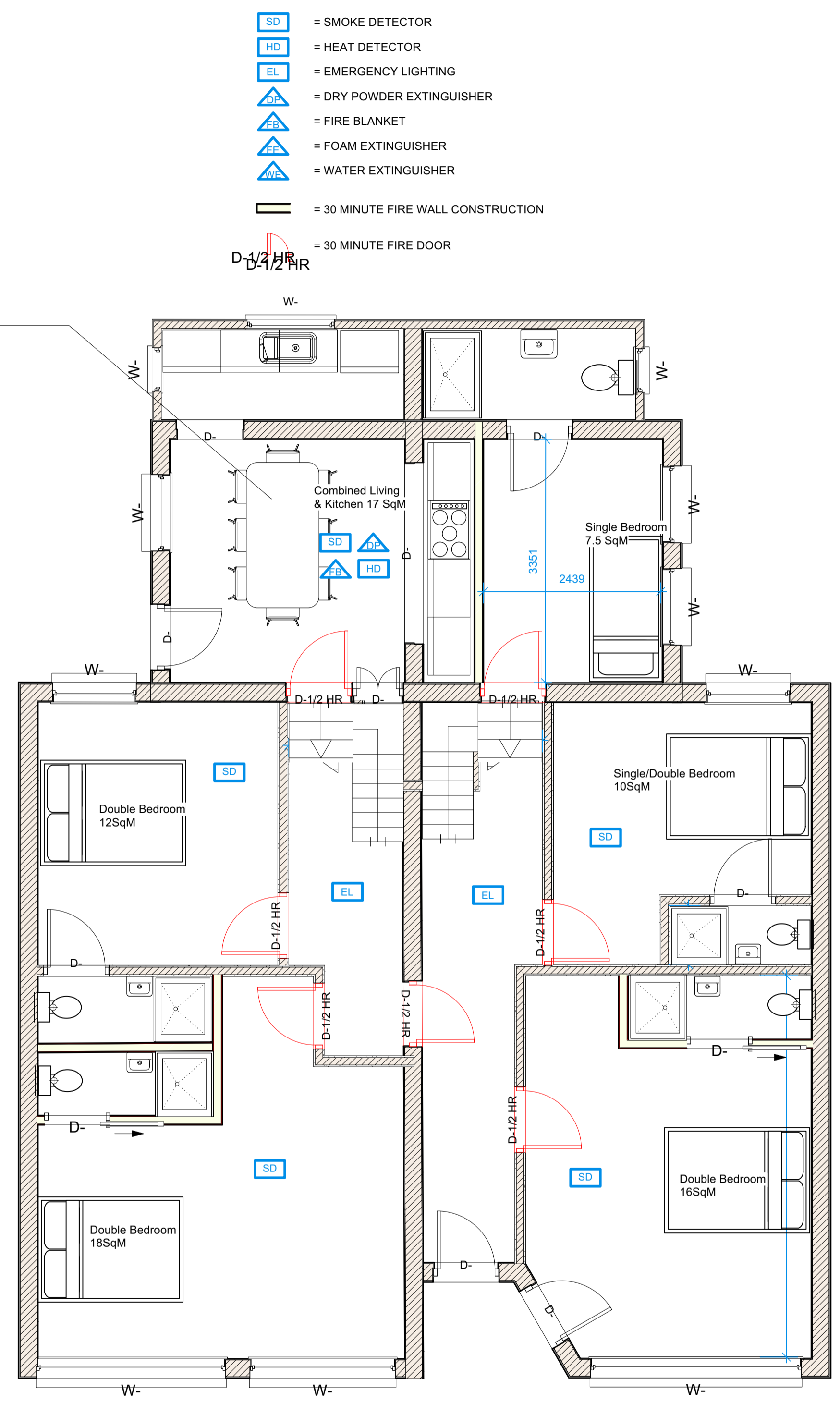
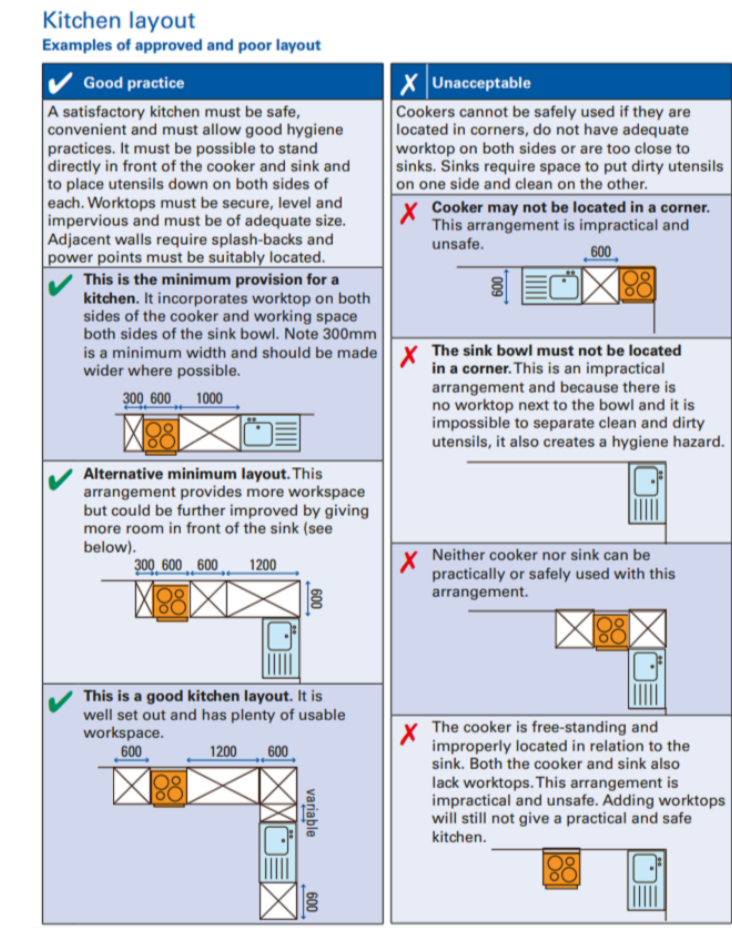
**Worktop:**  
A kitchen worktop that is level, secure and impervious. The minimum dimensions are 1000mm length and 600mm width.

**Storage:**  
A food storage cupboard for each occupant that is at least one 500mm wide base unit or a 1000mm wide wall unit. This may be provided within each occupant's room. (The space in the unit beneath the sink and drainer is not allowable for food storage).

**Fridge/Freezer:**  
A refrigerator with a minimum capacity of 130 litres plus a freezer with a minimum capacity of 60 litres. If not in the kitchen the fridge/freezer must be freely accessible and adjoining the kitchen.

**Refuse disposal:**  
Adequate provision must be made for the collection storage and disposal of refuse.

**Ventilation:**  
Mechanical ventilation to the outside air at a minimum extraction rate of 60 litres/second or 30 litres/second if the fan is sited within 300mm of the centre of the hob. This is in addition to any windows.



2 Ground Floor - Proposed  
Scale: 1:50

- SD = SMOKE DETECTOR
- HD = HEAT DETECTOR
- EL = EMERGENCY LIGHTING
- FB = DRY POWDER EXTINGUISHER
- FB = FIRE BLANKET
- FE = FOAM EXTINGUISHER
- WE = WATER EXTINGUISHER
- = 30 MINUTE FIRE WALL CONSTRUCTION
- D-1/2 HR = 30 MINUTE FIRE DOOR

**IMPORTANT INFORMATION**

- All dimensions to be checked on site by Contractor prior to commencement of works. Contractor to report any discrepancies and await further instructions before proceeding.
- Roof Trusses, Block and Beam and Easijoints, must be physically on site measured and checked prior to ordering, we accept no responsibility or liability for the accuracy of the desktop plans submitted for planning and building control.
- We use Ordnance Survey digital maps for Topography and Boundaries, it is the responsibility of the Land Owner to ensure he owns all the land the proposed development uses, and obtain if necessary any easements required to carry out the proposed work.
- All building materials and techniques must be agreed to be compliant by Building Control prior to commencement.



Design Firm  
**Complete Planning and Sustainable Development Ltd**  
33 Malthouse Road  
Manningtree  
CO11 1BY

Project Title  
HMO - The Norfolk Guest House  
1-3 Holland Road, Felixstowe  
IP11 1BA

Sheet Title  
Ground Floor Plan

Sheet Scale	Drawn By CP
Total Sheets 7	Reviewed By BP

File Name  
HollandRoadHMO-Combined2.rvt

Sheet No. 100001  
Plan ID  
IP111BA

Subsidiary  
For Planning