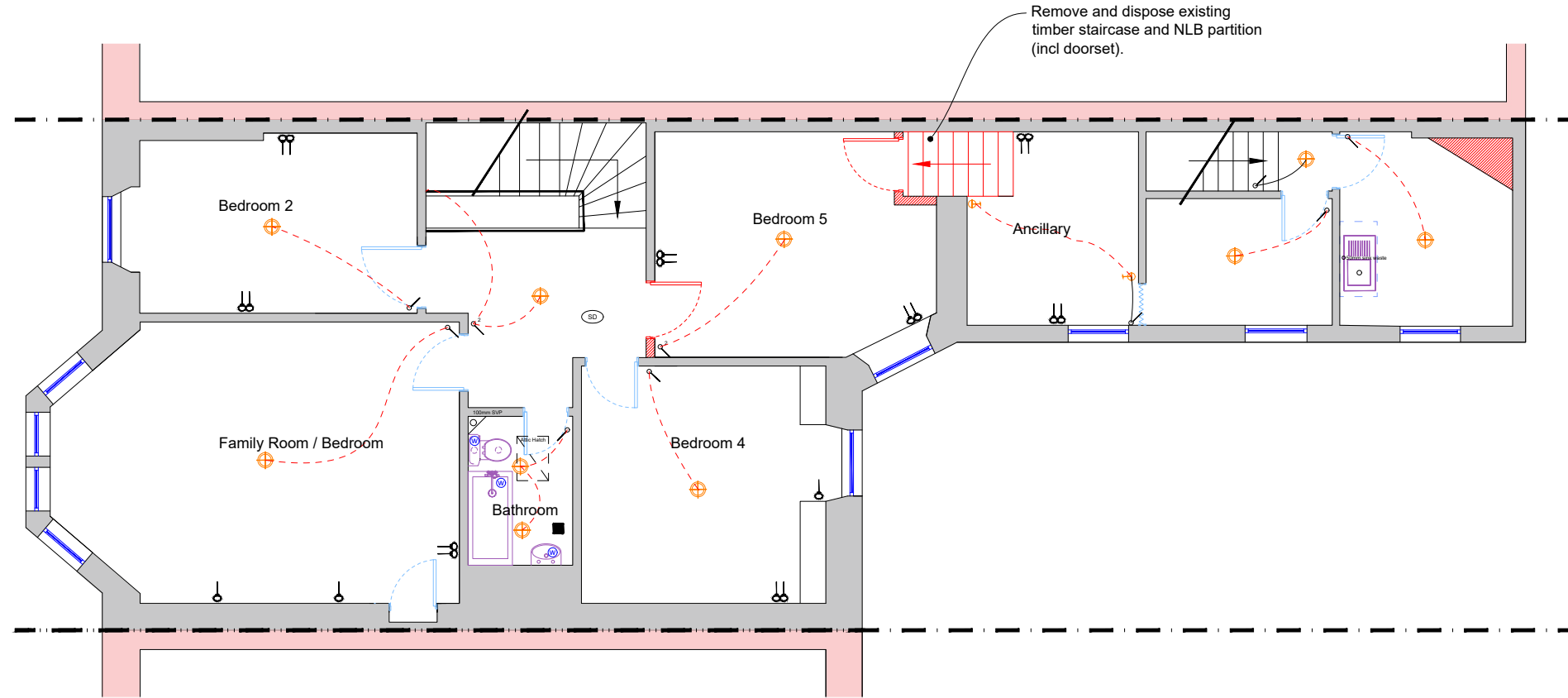


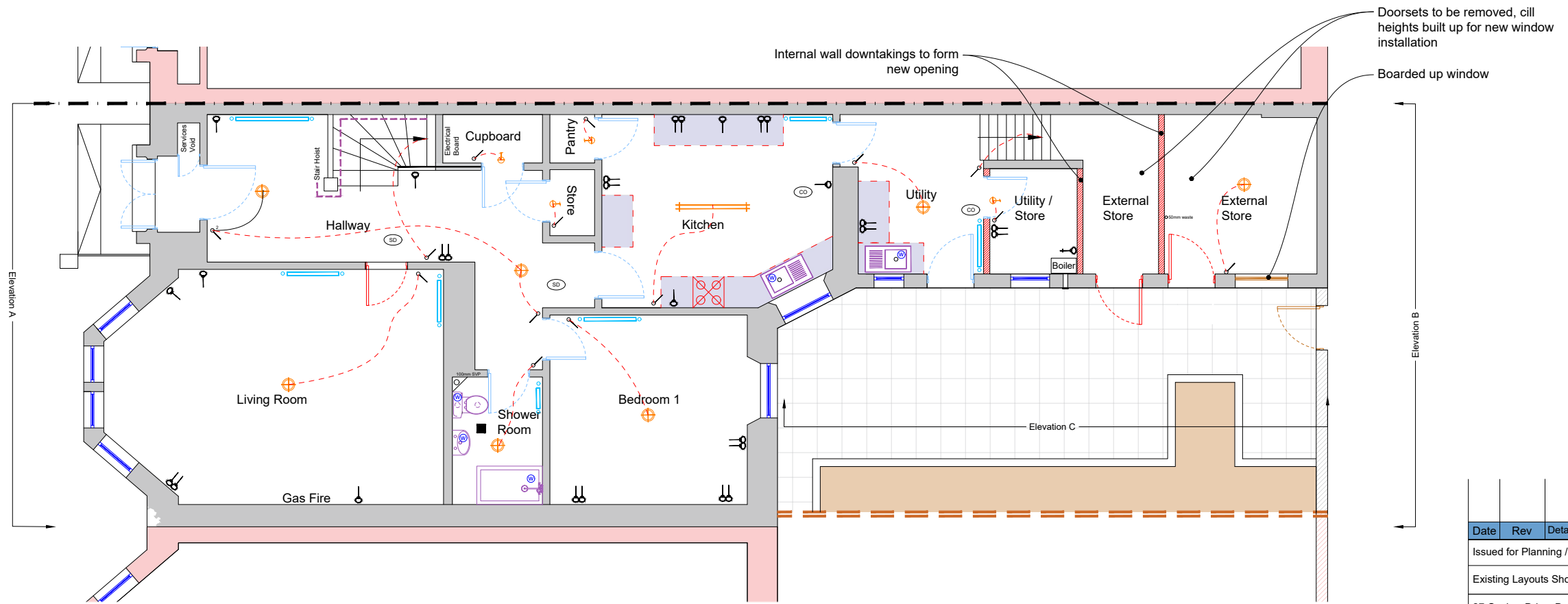
- General Notes**
- The drawing referred to in the application shows the general description of the project and materials to be used. All construction details and specifications shall be checked with any relevant manufacturer's product data.
 - All works to be carried out in accordance with the Scottish Technical Handbook (Domestic), 2023.
 - All materials to be designed, manufactured and installed in accordance with current British Standards.
 - All Downtakings and demolition works to be carried out in accordance with Health and Safety at Work Act 2001 and all subsequent CDM Regulations.
 - No High Alumina cement to be used in any new or alteration works.
 - The appointed contractor is responsible for confirming all sizes on site prior to placing orders for material. Any discrepancies noted in the drawings should be confirmed with the client / designer immediately.
 - All Electrical Works must be carried out by an NICEIC approved electrical contractor in strict accordance with the latest version of the IEE Regulations.
 - New Electrical Installations must comply with BS7671 and all subsequent amendments.
 - Amendments to lighting circuits to be carried out in accordance with CIBSE SLL 2012.
 - Lighting removals or alterations must give particular attention to the disposal of lamps and emergency luminaire battery packs due to the hazardous nature of their content. Ensure all lamps containing mercury, such as fluorescent lamps are disposed of in special landfill sites which are supervised by the local authority. Use only sealed lamp cursors or other safe means and ensure adequate ventilation during disposal.
 - Amendments to heating distribution to comply with Building Regulations and CIBSE Guides A, B and C.
 - The proposed ventilation systems shall comply with section 3.14 of the Scottish Building Standards, 2023 (Domestic).

Legend

- Energy pendant light
- Energy efficient downlight (flat with a heat & moisture resistant around. Fitting to be extra low voltage, 50 volts alternating current or 120 volts direct current. To BS 7671:2023)
- Fluorescent Strip Light
- Wall Mounted Light
- Mains powered smoke alarm with standby power supply. Recommended on separate circuit
- Single light switch (two way) - 1000mm from F.F.L.
- Single 13amp socket outlet
- Double 13amp socket outlet
- Accessible shower tray
- Boiler switch with pilot light above working level
- Exhaust fan to kitchen with a min extract rate of 30m³/h. Utility rate to be min. 30m³/h with humidistat
- Flux extract for gas boiler
- Exhaust fan to bathrooms and WCs with a minimum extract rate of 15m³/h with humidistat
- Existing wall mounted gas combi boiler
- Heat detector
- Heat detector
- CO2 Detector
- Stop for installation of electric towel rail. 400mm from F.F.L. Backed from outside
- 13amp spur switch with Neon 1500mm above floor level to provide addition to low level sockets
- Ceiling mounted drying fixture. 2m rows (Ø400mm long + back)
- Water Supply
- 12.000gph trickle vent
- Recycling of solid waste. Provide a dedicated internal space with a volume of at least 0.2m³ (20 litres) and no dimension less than 400mm for storing recyclable material
- Floor joint open direction
- Gas supply
- Wiring circuit - Lights
- Waste pipework - uPVC
- Heat Embrace - Plumbed back to combi boiler on flow and return circuits
- Extension - External Walls
- Extension - New Internal Walls
- Stop through lintel as per Structural Engineers Specification



Existing First Floor Plan
Scale: 1/100 @ A3



Existing Ground Floor Plan
Scale: 1/100 @ A3

All downtakings denoted **RED**



SCALE: 1/100 @A3

Date	Rev	Details
Issued for Planning / Building Warrant		
Existing Layouts Showing Downtakings		
27 Onslow Drive, Dennistoun, G31 2LY		
Scale	Drawn By	
1/100	A3	FH
Date	Drawing No.	
11/01/2024	(E)-01	