

© 2020 Cellnex
 All rights reserved. No part of this publication may be reproduced, stored in a retrieval system or transmitted in any form or by any means (Electronic, Mechanical, Photocopying, Recording or otherwise), without the prior written consent of the Company.

NOTES

CTIL (VF) 1No. DUMMY ADU451604 ANTENNA AT 17.02m MEAN, BEARING 60° E.T.N. I.D. No. 330473
 CTIL (VF) 1No. AOC4518R8V06 ANTENNA AT 19.4m MEAN, BEARING 60° E.T.N. I.D. No. 447906
 CTIL (VF) 1No. MIMO AAU5613 ANTENNA AT 20.05m MEAN, BEARING 60° E.T.N. I.D. No. 447903
 CTIL (VF) 1No. L21/U21 RRU I.D. No. 459217

CHERRY PICKER ACCESS POINT FOR ALL ANTENNA
 LIFTING BEAM AND HANDRAILS
 0.35m WIDE x 0.3m HIGH PARAPET (TYPICAL U.N.O.)
 0.5m WIDE DRAINAGE CHANNEL INDICATED THUS TYPICAL

YARD/
 PARKING AREA
 ROOF MOUNTED EXHAUST AND HOUSING
 1.1m. HIGH FREESTANDING HANDRAIL

TELEPHONE EXCHANGE BUILDING

VICTORIA CIRCUS

LINFERN ROAD

TELEFONICA (O2) UK LIMITED CABIN

CTIL (VF) 1No. DUMMY ADU451604 ANTENNA AT 17.02m MEAN, BEARING 300° E.T.N. I.D. No. 330475
 CTIL (VF) 1No. AOC4518R8V06 ANTENNA AT 19.4m MEAN, BEARING 300° E.T.N. I.D. No. 447908
 CTIL (VF) 1No. MIMO AAU5613 ANTENNA AT 20.05m MEAN, BEARING 300° E.T.N. I.D. No. 447905
 CTIL (VF) 1No. L21/U21 RRU I.D. No. 459217

ELECTRICAL SUB STATION

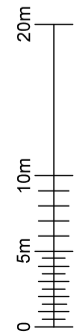
1.1m. HIGH FREE STANDING HANDRAIL

LPU4 ELECTRICAL METER CABINET

ELECTRICAL POWER SUPPLY DUCT

TELEFONICA O2 (UK) LIMITED ELECTRICAL METER CABINET

CTIL (VF) 1No. DUMMY ADU451604 ANTENNA AT 17.02m MEAN, BEARING 180° E.T.N. I.D. No. 330474
 CTIL (VF) 1No. AOC4518R8V06 ANTENNA AT 19.4m MEAN, BEARING 180° E.T.N. I.D. No. 447907
 CTIL (VF) 1No. MIMO AAU5613 ANTENNA AT 20.05m MEAN, BEARING 180° E.T.N. I.D. No. 447904
 CTIL (VF) 1No. GPS MODULE I.D. No. 437662 AT 20.81m
 CTIL (VF) 1No. L21/U21 RRU I.D. No. 459217



PROJECT No.	COM-0011818			
E-REF	E307474			
CSID	12532330			
VFID	84653			
CSR	91690			
CELL No.	9169002			
BT SKYLINE No.	GZ0054			
30	PLANNING AMEND	06/10/23	MIT	MIT
29	PLANNING	17/08/23	MIT	MIT
28	AS BUILT	23/8/497		
27	PLANNING	23/15/81		
26	PLANNING ISSUE	0023877		
ISS	REVISION	DATE	DRN	APP



CELLNEX UK
 R4, 4TH FLOOR, 2 BLAUGRAVE STREET, READING, RG1 1AZ
 Tel: 020 4526 8553

SITE No. 164920
 LINFERN ATE
 LINFERN ROAD
 DOWANHILL
 GLASGOW
 G12 9ND

NGR NS 56085 67476
 OS GRID 256085 667476
 TITLE
 SITE PLAN
 EXISTING
 CTIL

SCALE	1:500
DRAWN	IM
APPROVED	MIT
DRG No.	164920-22-000 - MD030
Sheet	1 of 1
Rev	30

FEINT DETAILS INDICATE LOCATIONS RESERVED FOR OTHER PROPOSALS WHICH MAY BE THE SUBJECT OF SEPARATE APPLICATIONS

© 2020 Cellnex
 All rights reserved. No part of this publication may be reproduced, stored in a retrieval system or transmitted in any form or by any means (Electronic, Mechanical, Photocopying, Recording or otherwise), without the prior written consent of the Company.

NOTES

PROJECT No.	COM-0011818
E-REF	E307474
CSID	12532330
VFID	84653
CSR	91690
CELL No.	9169002

BT SKYLINE No. **GZ0054**

30	PLANNING AMEND	06/10/23	MIT	MIT
29	PLANNING	17/08/23	MIT	MIT
28	AS BUILT	23/8/497		30/05/23 VVH/PMIT
27	PLANNING	23/1/581		17/11/22 MIT/MIT
26	PLANNING ISSUE	0023877		20/10/22 HF/HFC
ISS	REVISION	DATE	DRN	APP

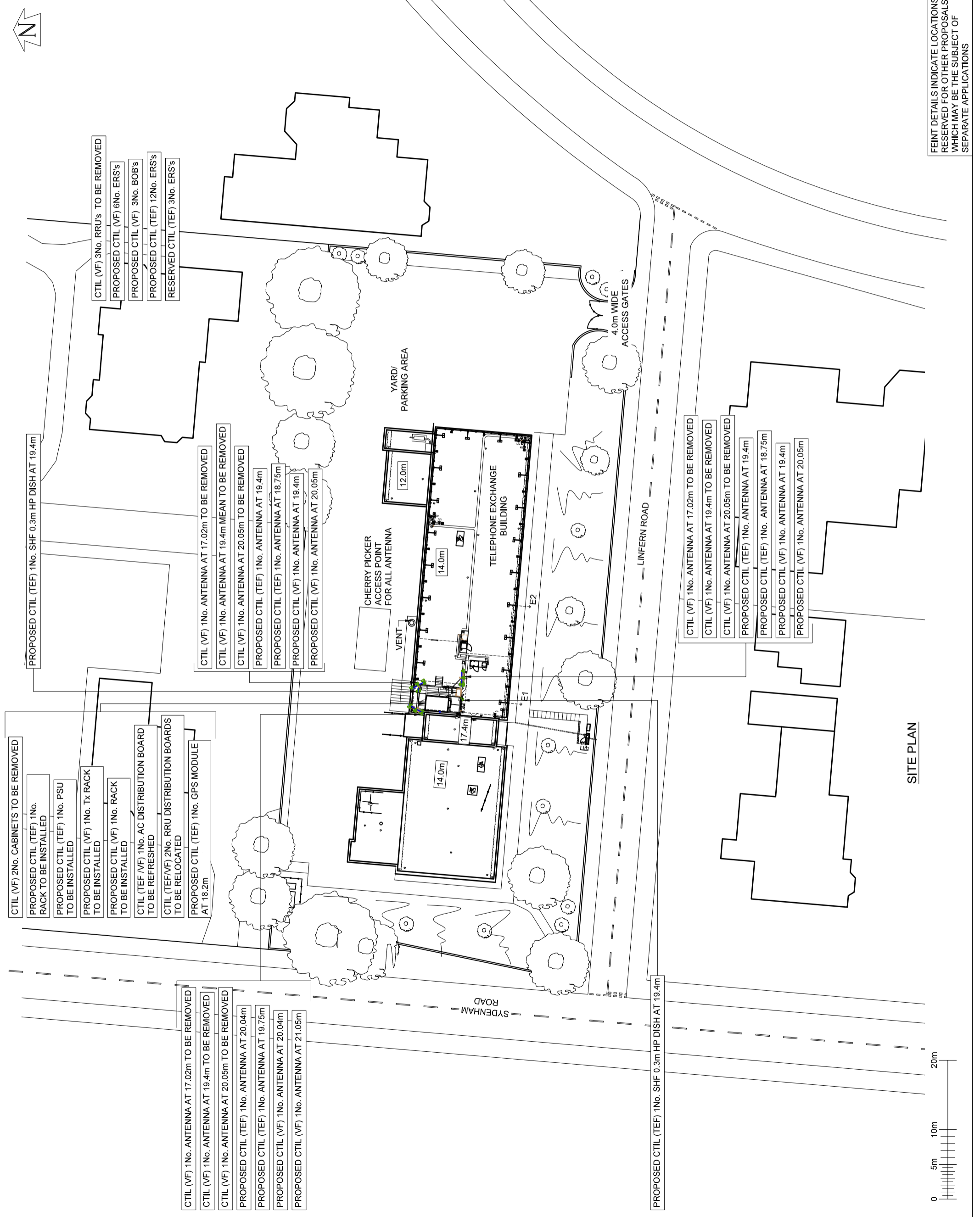
cellnex
driving telecom connectivity

CELLNEX UK
 R4, 4TH FLOOR, 2 BLAUGHS STREET, READING, RG1 1AZ
 Tel: 020 4526 8553

SITE No	164920
LINFERN ATE	
LINFERN ROAD	
DOWANHILL	
GLASGOW	
G12 9ND	
NGR	NS 56085 67476
OS GRID	256085 667476
TITLE	
SITE PLAN	
PLANNING APPLICATION	
CTIL	

SCALE	1:500
DRAWN	IM
APPROVED	MIT
DATE	31/05/11
DRG No.	164920-22-111 - MD030
Rev	30

A3



FEINT DETAILS INDICATE LOCATIONS RESERVED FOR OTHER PROPOSALS WHICH MAY BE THE SUBJECT OF SEPARATE APPLICATIONS

SITE PLAN

CTIL (VF) 1No. DUMMY ADU451604 ANTENNA AT 18.1m MEAN, BEARING 60° E.T.N. I.D. No. 330473
 CTIL (VF) 1No. AOC4518R8V06 ANTENNA AT 21.1m MEAN, BEARING 60° E.T.N. I.D. No. 447906
 CTIL (VF) 1No. MIMO AAU5613 ANTENNA AT 21.75m MEAN, BEARING 60° E.T.N. I.D. No. 447903
 CTIL (VF) 1No. L21/U21 RRU I.D. No. 459217

TELEFONICA (O2) UK LIMITED CABIN

1.1m. HIGH FREESTANDING HANDRAIL

CTIL (VF) 1No. DUMMY ADU451604 ANTENNA AT 18.1m MEAN, BEARING 300° E.T.N. I.D. No. 330475
 CTIL (VF) 1No. AOC4518R8V06 ANTENNA AT 21.1m MEAN, BEARING 300° E.T.N. I.D. No. 447908
 CTIL (VF) 1No. MIMO AAU5613 ANTENNA AT 21.75m MEAN, BEARING 300° E.T.N. I.D. No. 447905
 CTIL (VF) 1No. L21/U21 RRU I.D. No. 459217

150mm TRAY FOR POWER CABLE

LPU4 ELECTRICAL METER CABINET

NOTE:- TREES AROUND SITE REMOVED FOR CLARITY.

© 2020 Cellnex
 All rights reserved. No part of this publication may be reproduced, stored in a retrieval system or transmitted in any form or by any means (Electronic, Mechanical, Photocopying, Recording or otherwise), without the prior written consent of the Company.

NOTES

PROJECT No.	COM-0011818			
E-REF	E307474			
CSID	12532330			
VFID	84653			
CSR	91690			
CELL No.	9169002			
BT SKYLINE No. GZ0054				
30	PLANNING AMEND	06/10/23	MIT	MIT
29	PLANNING	17/08/23	MIT	MIT
28	AS BUILT	238497	30/05/23	VH/HP/MT
27	PLANNING	231581	17/11/22	MIT
26	PLANNING ISSUE	0023877	20/10/22	HF/HFC
ISS	REVISION	DATE	DRN	APP



CELLNEX UK
 R4, 4TH FLOOR, 2 BLAGANIE STREET, READING, RG1 1AZ
 Tel: 020 4526 8553

SITE No	164920
LINFERN ATE	
LINFERN ROAD	
DOWANHILL	
GLASGOW	
G12 9ND	
NGR	NS 56085 67476
OS GRID	256085 667476
TITLE	SOUTH ELEVATION
EXISTING	
CTIL	
SCALE	1:250
DRAWN	IM
APPROVED	MIT
DATE	31/05/11
DRG No.	164920-22-002 - MD030
Rev	Sheet 1 of 4

SOUTH ELEVATION

CTIL (VF) 1No. DUMMY ADU451604 ANTENNA AT 18.1m MEAN, BEARING 180° E.T.N. I.D. No. 330474
 CTIL (VF) 1No. AOC4518R8V06 ANTENNA AT 21.1m MEAN, BEARING 180° E.T.N. I.D. No. 447907
 CTIL (VF) 1No. MIMO AAU5613 ANTENNA AT 21.75m MEAN, BEARING 180° E.T.N. I.D. No. 447904
 CTIL (VF) 1No. GPS MODULE I.D. No. 437662 AT 20.81m
 CTIL (VF) 1No. L21/U21 RRU I.D. No. 459217



FEINT DETAILS INDICATE LOCATIONS RESERVED FOR OTHER PROPOSALS WHICH MAY BE THE SUBJECT OF SEPARATE APPLICATIONS

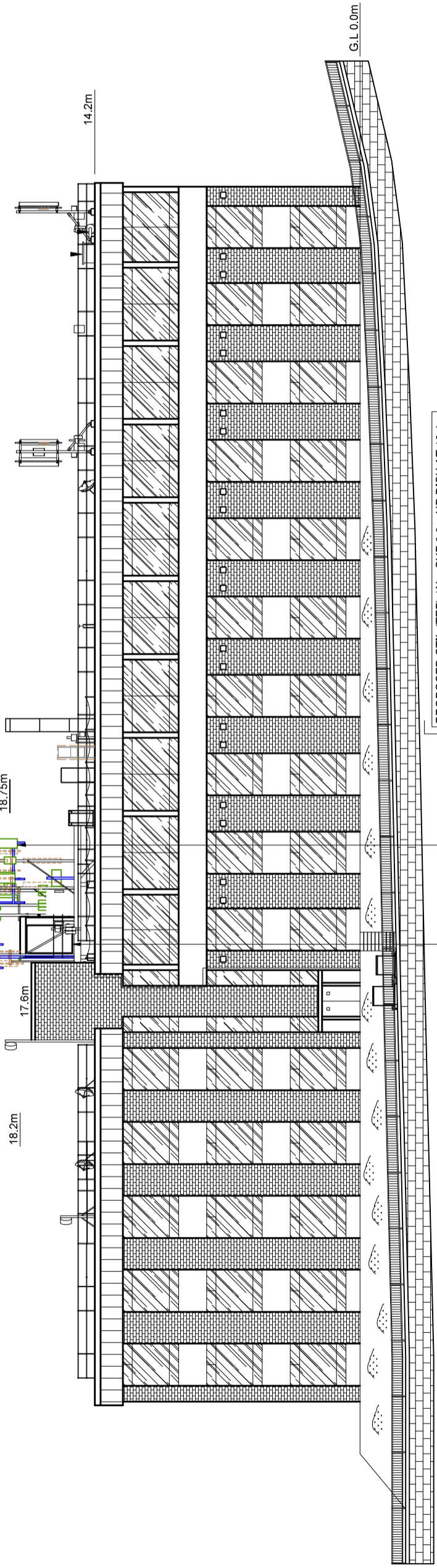
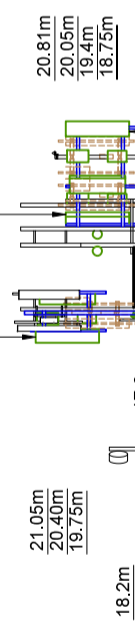
© 2020 Cellnex
 All rights reserved. No part of this publication may be reproduced, stored in a retrieval system or transmitted in any form or by any means (Electronic, Mechanical, Photocopying, Recording or otherwise), without the prior written consent of the Company.

NOTES

CTIL (VF) 3No. RRU's TO BE REMOVED
 PROPOSED CTIL (VF) 6No. ERS's
 PROPOSED CTIL (VF) 3No. BOB's
 PROPOSED CTIL (TEF) 12No. ERS's
 RESERVED CTIL (TEF) 3No. ERS's

CTIL (VF) 1No. ANTENNA AT 17.02m TO BE REMOVED
 CTIL (VF) 1No. ANTENNA AT 19.4m TO BE REMOVED
 CTIL (VF) 1No. ANTENNA AT 20.05m TO BE REMOVED
 PROPOSED CTIL (TEF) 1No. ANTENNA AT 20.04m
 PROPOSED CTIL (TEF) 1No. ANTENNA AT 19.75m
 PROPOSED CTIL (VF) 1No. ANTENNA AT 20.04m
 PROPOSED CTIL (VF) 1No. ANTENNA AT 21.05m

PROPOSED CTIL (TEF) 1No. SHF 0.3m HP DISH AT 19.4m
 CTIL (VF) 1No. ANTENNA AT 17.02m TO BE REMOVED
 CTIL (VF) 1No. ANTENNA AT 19.4m MEANTO BE REMOVED
 CTIL (VF) 1No. ANTENNA AT 20.05m TO BE REMOVED
 PROPOSED CTIL (TEF) 1No. ANTENNA AT 19.4m
 PROPOSED CTIL (TEF) 1No. ANTENNA AT 18.75m
 PROPOSED CTIL (VF) 1No. ANTENNA AT 19.4m
 PROPOSED CTIL (VF) 1No. ANTENNA AT 20.05m



CTIL (VF) 2No. CABINETS TO BE REMOVED
 PROPOSED CTIL (TEF) 1No. RACK TO BE INSTALLED
 PROPOSED CTIL (TEF) 1No. PSU TO BE INSTALLED
 PROPOSED CTIL (VF) 1No. Tx RACK TO BE INSTALLED
 PROPOSED CTIL (VF) 1No. RACK TO BE INSTALLED
 CTIL (TEF/VF) 1No. AC DISTRIBUTION BOARD TO BE REFRESHED
 CTIL (TEF/VF) 2No. RRU DISTRIBUTION BOARDS TO BE RELOCATED
 PROPOSED CTIL (TEF) 1No. GPS MODULE AT 18.2m

PROPOSED CTIL (TEF) 1No. SHF 0.3m HP DISH AT 19.4m
 CTIL (VF) 1No. ANTENNA AT 17.02m TO BE REMOVED
 CTIL (VF) 1No. ANTENNA AT 19.4m TO BE REMOVED
 CTIL (VF) 1No. ANTENNA AT 20.05m TO BE REMOVED
 PROPOSED CTIL (TEF) 1No. ANTENNA AT 19.4m
 PROPOSED CTIL (TEF) 1No. ANTENNA AT 18.75m
 PROPOSED CTIL (VF) 1No. ANTENNA AT 19.4m
 PROPOSED CTIL (VF) 1No. ANTENNA AT 20.05m

SOUTH ELEVATION

PROJECT No.	COM-0011818
E-REF	E307474
CSID	12532330
VFID	84653
CSR	91690
CELL No.	9169002

BT SKYLINE No. GZ0054	
30	COM-0011818 PLANNING AMEND 06/10/23 MIT/MIT
29	COM-0011818 PLANNING 17/08/23 MIT/MIT
28	238497 AS BUILT 30/05/23 VH/HP/MIT
27	231581 PLANNING 17/11/22 MIT/MIT
26	0028877 PLANNING ISSUE 20/10/22 HF/HFC
ISS	REVISION DATE DRN APP



CELLNEX UK
 R4, 4TH FLOOR, 2 BLAGAVANIE STREET, READING, RG1 1AZ
 Tel: 020 4526 8553

SITE No	164920
LINFERN ATE	LINFERN ROAD
DOWANHILL	GLASGOW
G12 9ND	
NGR	NS 56085 67476
OS GRID	256085 667476
TITLE	SITE ELEVATION
	PLANNING APPLICATION
	CTIL

SCALE	1:250
DRAWN	IM
APPROVED	MIT
DRG No.	164920-22-161 - MD030
Rev	30

FEINT DETAILS INDICATE LOCATIONS RESERVED FOR OTHER PROPOSALS WHICH MAY BE THE SUBJECT OF SEPARATE APPLICATIONS

