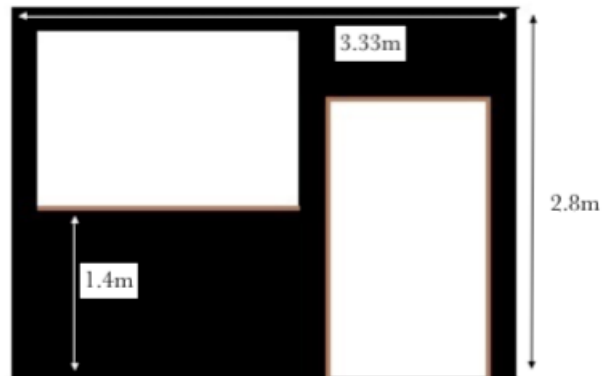
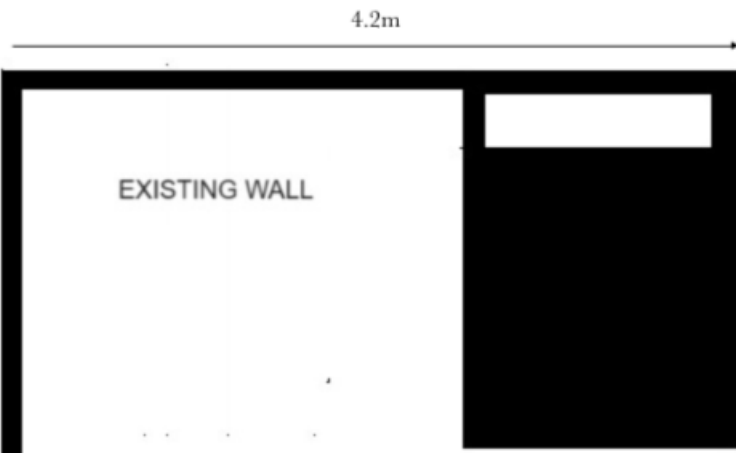




LEFT SIDE



FRONT VIEW
ILLUMINATED SIGN SAYING
HOUSE ABOVE OPENING.



RIGHT SIDE

These three sides are connected to a 6x2" timber running along the front of the property leaving it free standing from all existing structures. Beams of the same material join the sections across the top to form a base for removable blinds to be pulled across to form a retractable temporary roof.

2.8m