

EXISTING LEVELS RECENTLY ASSUMED. FURTHER TOPOGRAPHICAL SURVEY REQUIRED TO CONFIRM

EXISTING RETAINING WALL. EXACT LOCATION, HEIGHT AND EXTENTS TO BE CONFIRMED PRIOR TO THE START OF WORKS ON SITE.

WATER BUTT TO SERVE ONE SINGLE PLOT

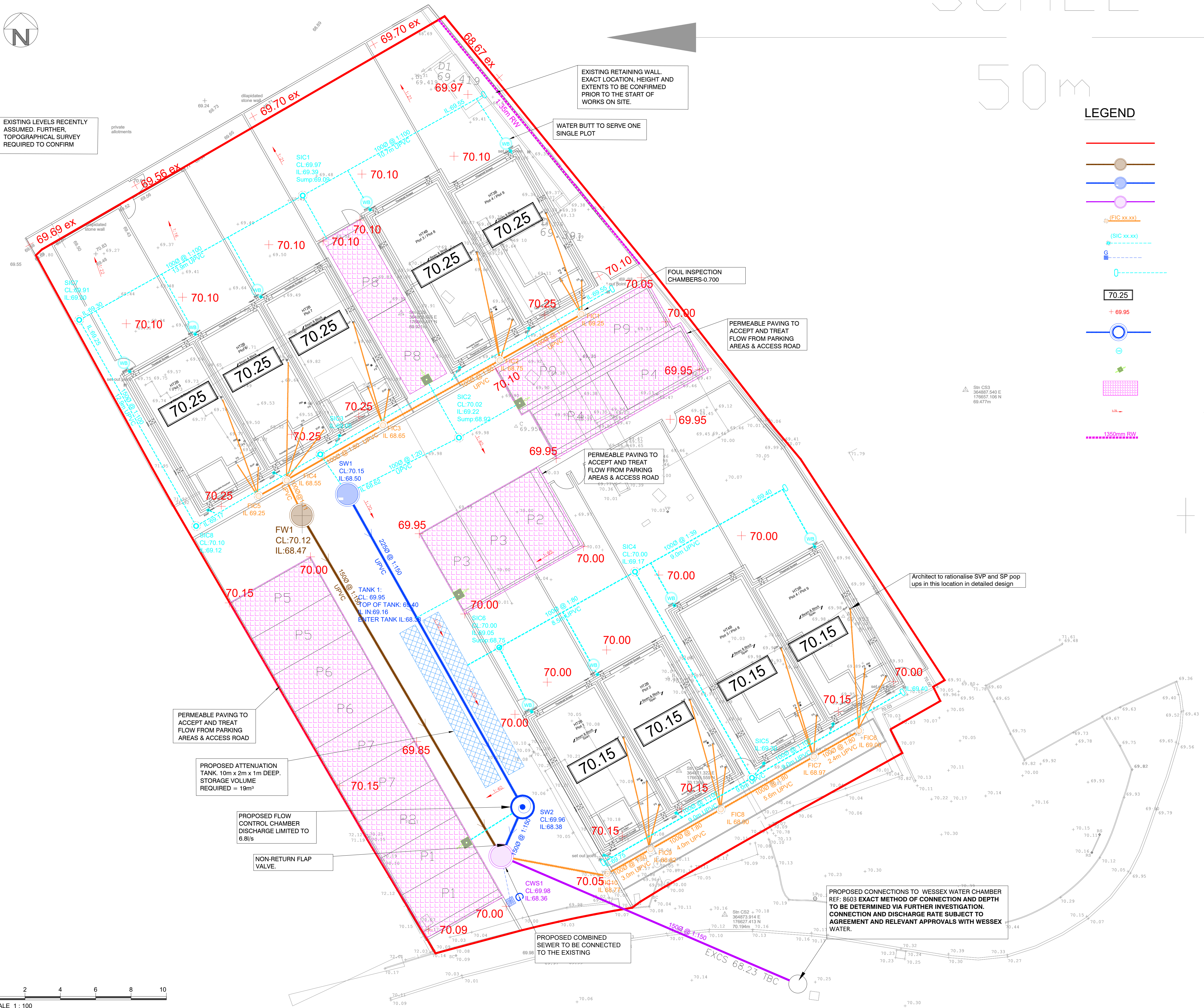
50m

LEGEND

- Site Boundary
- Foul Water Sewer (adoptable)
- Surface Water Sewer (adoptable)
- Combined Sewer
- Private Foul Inspection Chamber
- Private Surface Water Inspection Chamber
- Highway Gully
- Rodding Eye
- Indicative Finished Ground Level
- Spot Levels
- Flow Control Chamber
- Water Butt
- Diffuser Box
- Permeable paving
- Slope
- Retaining Wall

DO NOT SCALE this drawing. Use figured dimensions only. The Contractor must check & verify all dimensions on site. Any discrepancies must be reported immediately to the Engineer for clarification before proceeding. This drawing is copyright and owned by MSL Civil Engineering Consultancy.

SAFETY, HEALTH AND ENVIRONMENTAL INFORMATION Refer to the relevant Construction (Design and Management) documentation where applicable. It is assumed that all works on this drawing will be carried out by a competent contractor, working where appropriate to an approved method statement.



PERMEABLE PAVING TO ACCEPT AND TREAT FLOW FROM PARKING AREAS & ACCESS ROAD

PROPOSED ATTENUATION TANK. 10m x 2m x 1m DEEP. STORAGE VOLUME REQUIRED = 19m³

PROPOSED FLOW CONTROL CHAMBER DISCHARGE LIMITED TO 6.8l/s

NON-RETURN FLAP VALVE.

PROPOSED COMBINED SEWER TO BE CONNECTED TO THE EXISTING

PROPOSED CONNECTIONS TO WESSEX WATER CHAMBER REF: 8603 EXACT METHOD OF CONNECTION AND DEPTH TO BE DETERMINED VIA FURTHER INVESTIGATION. CONNECTION AND DISCHARGE RATE SUBJECT TO AGREEMENT AND RELEVANT APPROVALS WITH WESSEX WATER.

Architect to rationalise SVP and SP pop ups in this location in detailed design

PERMEABLE PAVING TO ACCEPT AND TREAT FLOW FROM PARKING AREAS & ACCESS ROAD

PERMEABLE PAVING TO ACCEPT AND TREAT FLOW FROM PARKING AREAS & ACCESS ROAD

0m 2 4 6 8 10  
SCALE 1 : 100

A05	05.02.24	Engineering Updated	AA
A04	02.02.24	Issued to suit the client comments	AA
A03	18.01.24	Issued to suit the client comments	AA
A02	21.12.23	Issued to suit the client comments	AA
A01	08/12/23	FIRST ISSUE	AA
Rev	Date	Description	By

Client  
Woodstock Homes

Project  
Dial Lane

Title  
GENERAL ARRANGEMENT

Drawing Status				
<b>FOR TENDER</b>				
Drawn	Checked	Approved	Date	Scale @ A1
AA	GW	GW	DEC 2023	1:100
Project No.	128009	Drawing No.	CIV-100	Revision
				A05

