

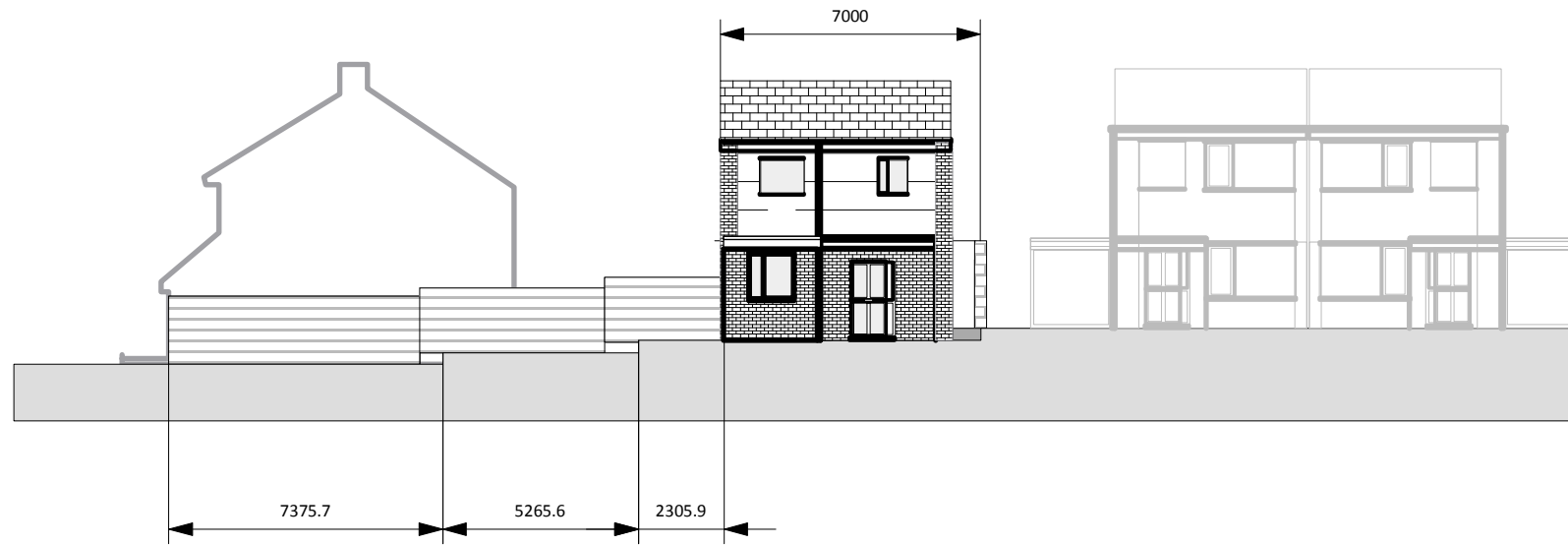
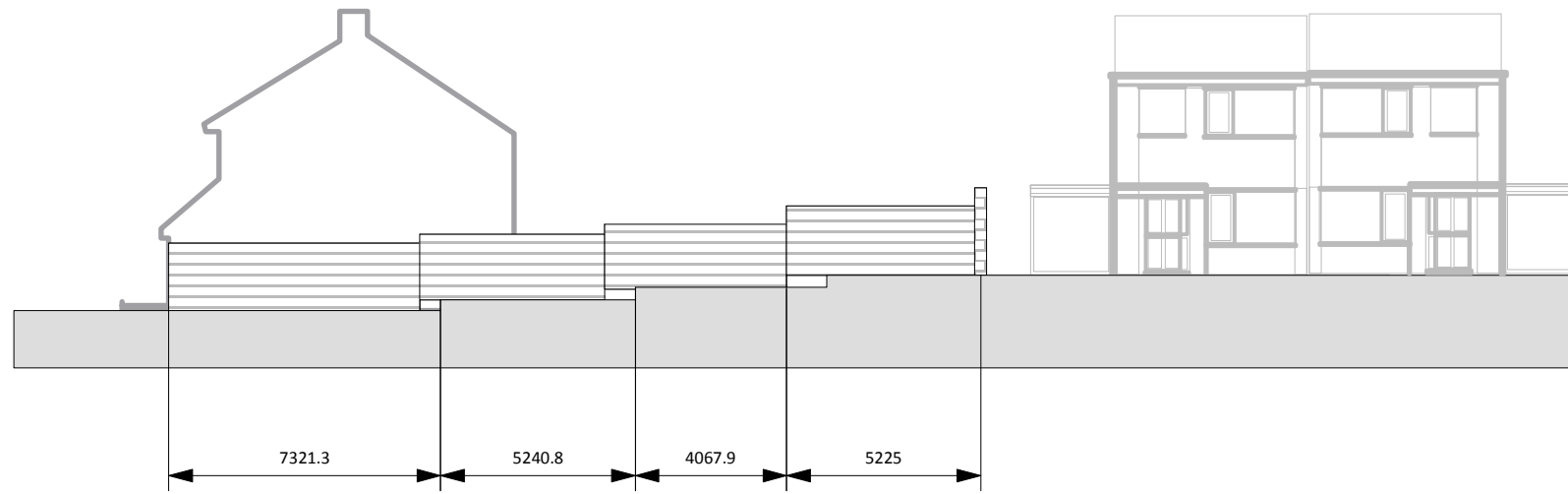
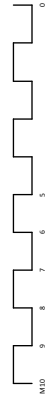
1

2

3

A

A

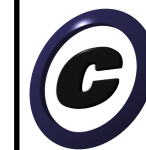


B

B

- The Contractor to advise on all details and ensure stability and strength of construction.
- The Contractor to provide setting out and rod drawings for approval prior to construction.
- The Contractor to check all dimensions on site and relate to these drawings.
- The Contractor to report any discrepancies to Designers prior to construction.
- All services to Local Authority, BCO and Environmental Health requirements.
- All structure to Structural Engineer's details and Local Authority/BCO requirements.
- All construction and materials to comply with current Building and Fire regulations.

- The Contractor shall comply with:
 - The CDM Regulations;
 - Fire precautions;
 - Code of Practice for the prevention of Fires on Construction Sites and Buildings undergoing refurbishment;
 - Health and Safety at Work Regulations 1974;
 - Code of Welfare conditions as outlined in the National Working Rule Agreement for the Building Industry, and any Statutory Rules and Orders relating to the provision and maintenance of welfare and safety measures and amenities for all work people employed on site.



Craig Moffat Architects and Design Ltd
 High Street,
 Great Doddington,
 Northants NN29 7TQ
 tel - 02074944888
 e - cma@craigmoffatarchitects.com
 w - www.craigmoffatarchitects.com

Product Title

31 BARNWELL DRIVE

Drawing Title

ASHRIDGE CLOSE EXISTING AND PROPOSED

Designer	Director CMA
Drawn By	Scale 1:200 @ A3
Venue	Drawing No. 31BD-SK-004
Date JAN 24	
CAD File Name	31BD-PI APP-24

1

2

3