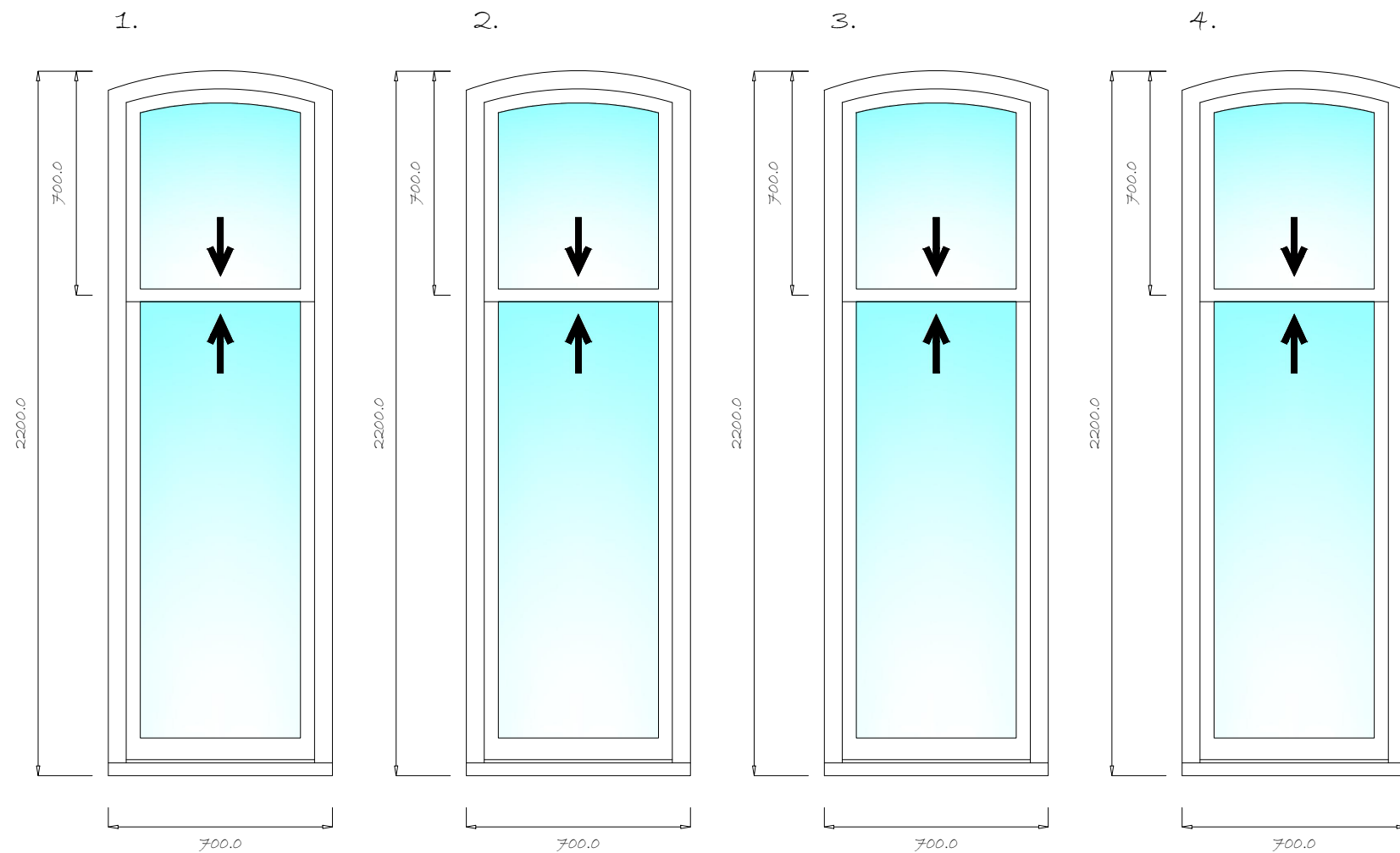
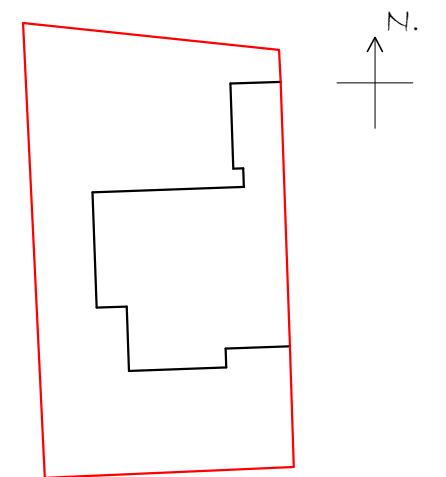


Front Elevation



4 windows to be replaced in total.
 Existing windows are white painted timber, single glazed.
 Proposed windows are white painted timber, double glazed.



Site Plan
1:500

Mr. T. Watson,
 9 Park Avenue,
 Dunfermline. KY12 7HX.

Proposed Replacement Windows

Scale: 1:20 1/2/24

Ref: 37165/1

srjwindows
 conservatories. sunrooms. windows. doors.

SRJ (Scotland) Ltd.
 Macintosh House,
 Innova Campus, Viking Way,
 Rosyth, Fife. KY11 2UU.

