

Orientation

Grid Plan co-ordinates relate to a local survey grid coincident with OS National Grid. SF = 1 applied at Station 18
Levels Levels relate to OS Newlyn datum by multiple RTK GNSS observations. Station 18 used, value given = 146.452m

Notes:

Legend

AB	Air Brick	I/R	Iron Railings
B	Bollard	Lt	Light
C/B	Close Boarded	P	Post
CH	Cill to Head	Pe	Pipe
C/L	Chain Link	P/R	Post & Rail
Col.	Column	P/W	Post & Wire
Cpd	Cupboard	RD	Roller Door
CR	Crown Level	RE	Rodding Eye
DB	Distribution Box	RWP	Rainwater Pipe
Dr	Drain	SD	Sliding Doors
FE	Fire Exit	S	Sill Height
FC	Floor to Cill	SP	Spring Point
FL	Floor Level	SVP	Soil & Vent Pipe
FW	Foul Water	SW	Surface Water
MH	Manhole	US	Underside
G	Gully	UTL	Unable To Lift
H	Window Head Ht	VP	Vent Pipe
IC	Inspection Chamber	Vt	Vent
IL	Invert Level	WT	Water Tap

2.70 Floor to Ceiling Ht F2.70 False Ceiling Ht

Mains Point	>	Stairs/Steps (UP)	↗
Blank Plate	⌋	Isolator Switch	⌋
Light	⊗	Water Stop Tap	⊗
Strip Light	⊗	Overhead Features	---
Switch	⋄	Joist Span Direction	↔
Pendant Switch	⋄	Sloping Ceiling (Up)	↗

Key:

A	Issue:	19.03.19	KP
Rev No.	Revision Note	Date	Signed
1		5	10



4 Worcester Close
West Haddon
Northants, NN6 7GN
Tel: 01604 582200
mail@aimcon.co.uk
www.aimcon.co.uk



TOPOGRAPHICAL SURVEYS
3D LASER SCANNING

MEASURED BUILDING SURVEYS
LAND REGISTRY COMPLIANT PLANS

Client Uppingham School

Title Elevations
Meadhurst
Site 11 Asyton Road
Uppingham, LE15 9RP

Surveyed KP Date 19th March 2019
Sheet No 2 of 3 Scale 1/100 @ A1

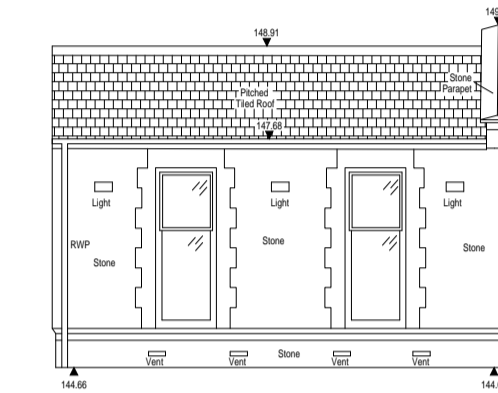
Dwg No. 01-2149-2 Rev. A



Elevation J



Elevation K



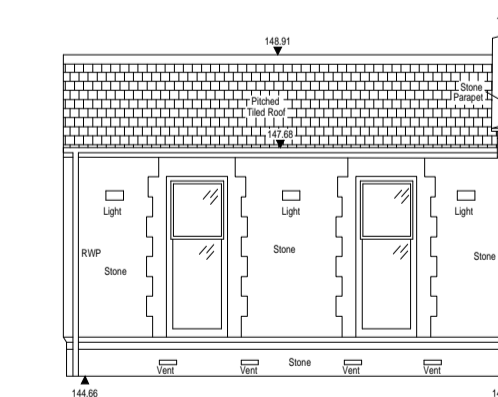
Elevation L



Elevation J



Elevation K



Elevation L