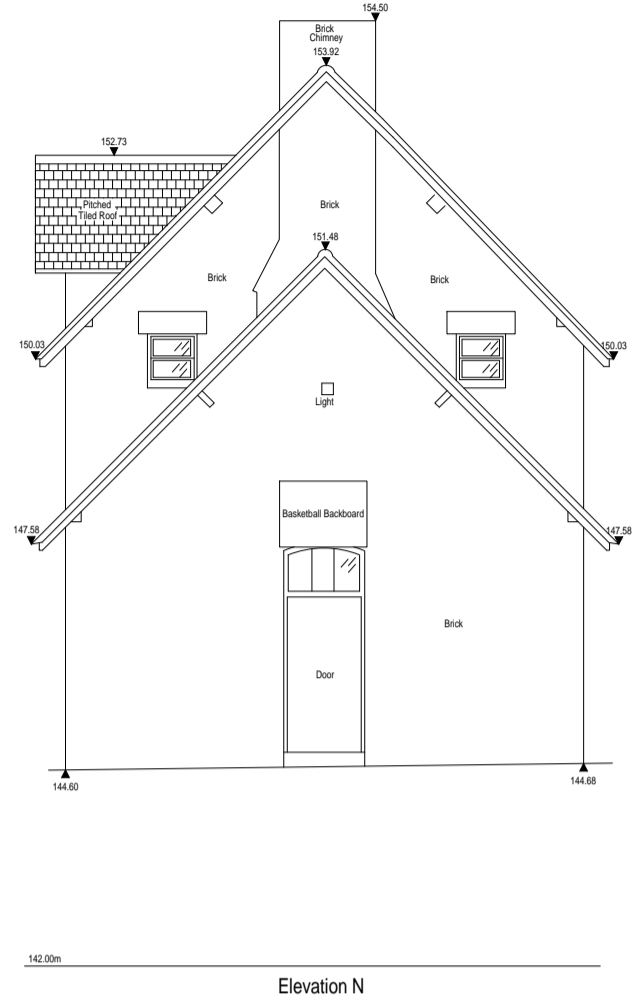




Elevation M



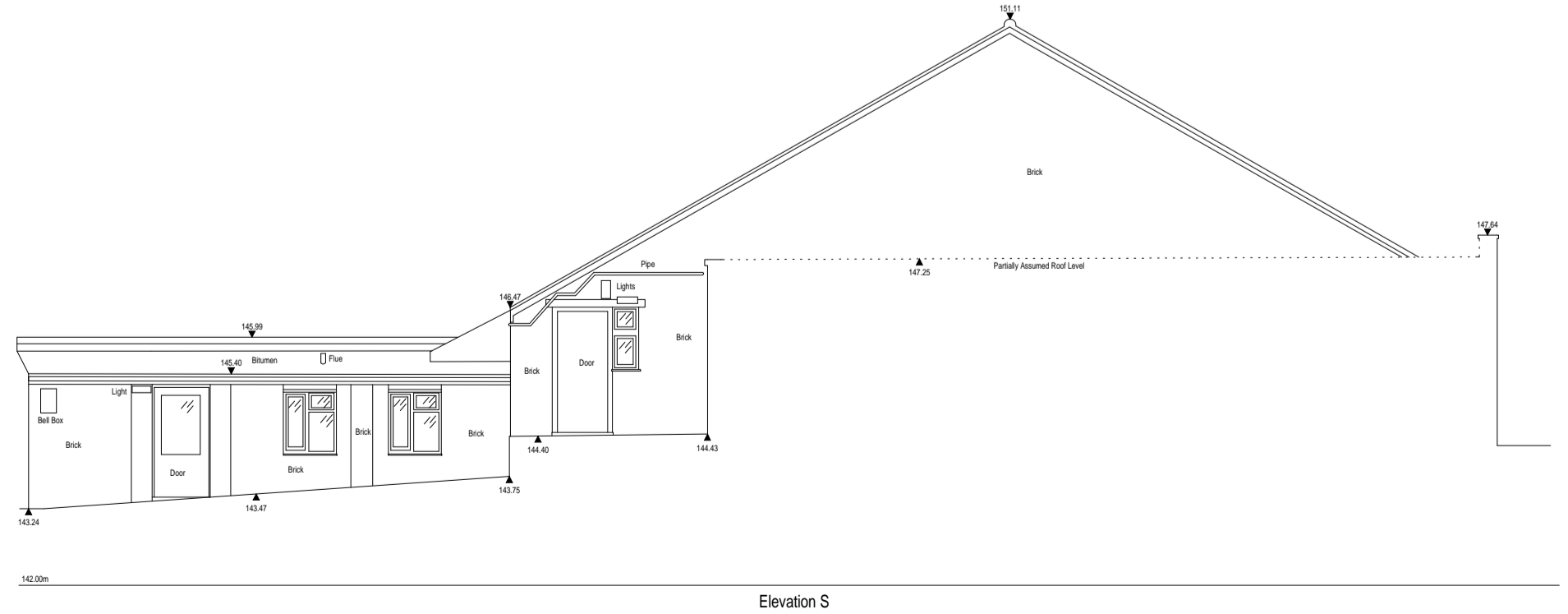
Elevation N



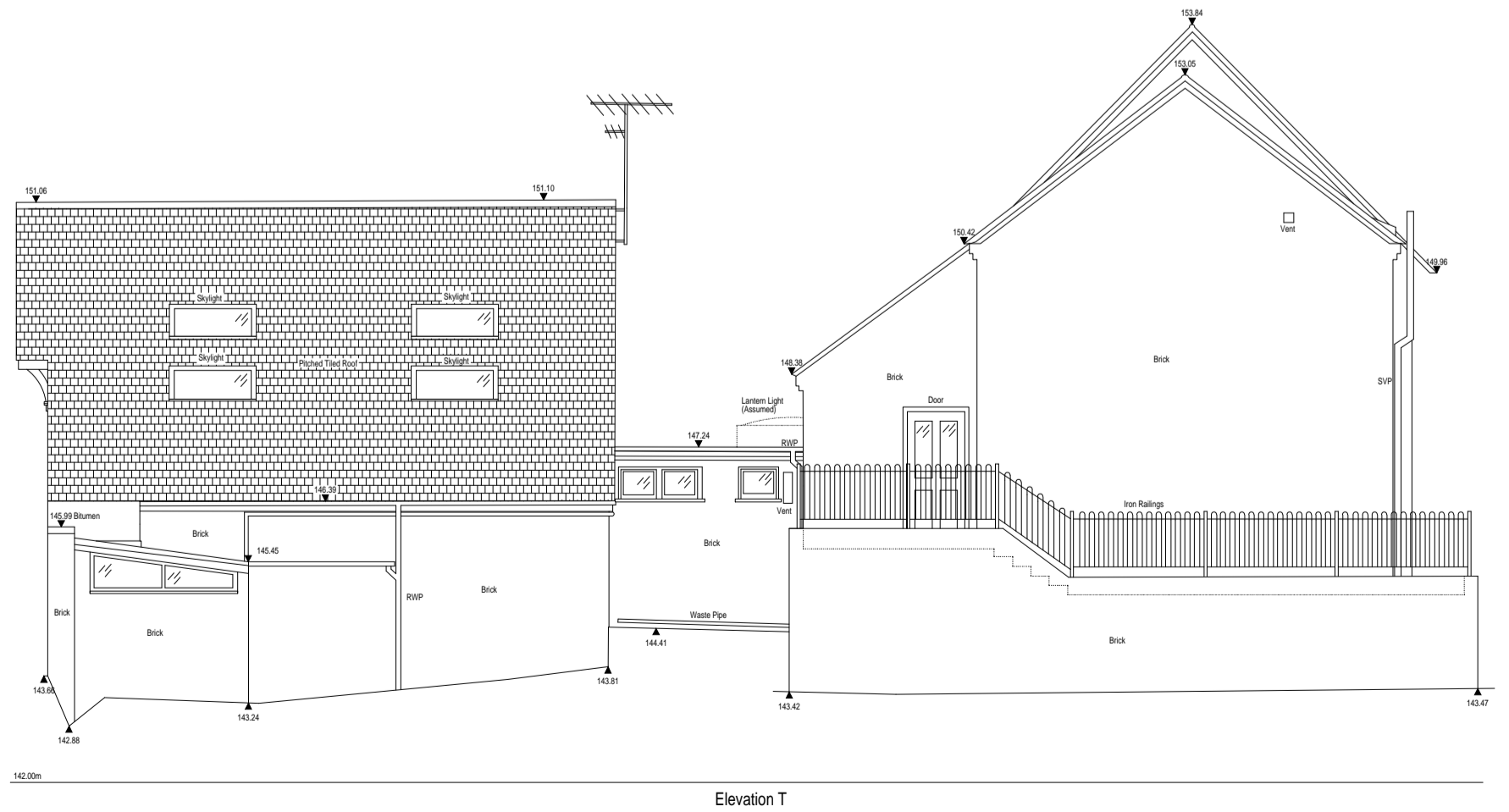
Elevation P



Elevation R



Elevation S



Elevation T

Orientation

Grid Plan co-ordinates relate to a local survey grid coincident with OS National Grid. SF = 1 applied at Station 18

Levels Levels relate to OS Newlyn datum by multiple RTK GNSS observations. Station 18 used, value given = 146.452m

Notes:

Legend

AB	Air Brick	I/R	Iron Railings
B	Bollard	Lt	Light
C/B	Close Boarded	P	Post
CH	Cill to Head	Pe	Pipe
C/L	Chain Link	P/R	Post & Rail
Col.	Column	P/W	Post & Wire
Cpd	Cupboard	RD	Roller Door
CR	Crown Level	RE	Rodding Eye
DB	Distribution Box	RWP	Rainwater Pipe
Dr	Drain	SD	Sliding Doors
FE	Fire Exit	S	Sill Height
FC	Floor to Cill	SP	Spring Point
FL	Floor Level	SVP	Soil & Vent Pipe
FW	Foul Water	SW	Surface Water
MH	Manhole	US	Underside
G	Gully	UTL	Unable To Lift
H	Window Head Ht	VP	Vent Pipe
IC	Inspection Chamber	Vt	Vent
IL	Invert Level	WT	Water Tap

2.70 Floor to Ceiling Ht F2.70 False Ceiling Ht

Mains Point	>	Stairs/Steps (UP)	↗
Blank Plate	⊃	Isolator/Switch	⊃
Light	⊗	Water Stop Tap	⊕
Strip Light	⊗	Overhead Features	---
Switch	⋄	Joist Span Direction	↔
Pendant Switch	⋄	Sloping Ceiling (Up)	↗

Key:

A	Issue:	19.03.19	KP
Rev No.	Revision Note	Date	Signed
1			

RICS

4 Worcester Close
West Haddon
Northants, NN6 7GN
Tel: 01604 582200
mail@aimcon.co.uk
www.aimcon.co.uk

AIMCON SURVEYS

TOPOGRAPHICAL SURVEYS
3D LASER SCANNING

MEASURED BUILDING SURVEYS
LAND REGISTRY COMPLIANT PLANS

Client **Uppingham School**

Title **Elevations**
Meadhurst

Site **11 Asyton Road**
Uppingham, LE15 9RP

Surveyed **KP** Date **19th March 2019**

Sheet No **3 of 3** Scale **1/100 @ A1**

Dwg No. **01-2149-3** Rev. **A**