

# Meadhurst

Uppingham School



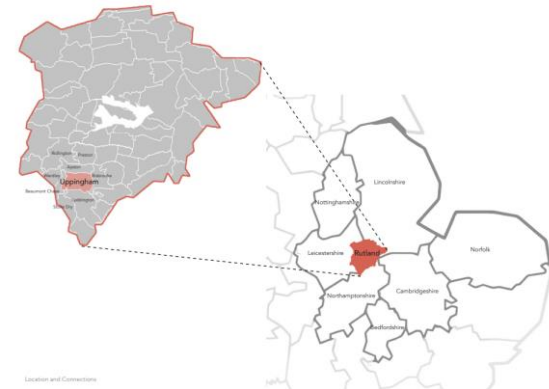
# Uppingham School



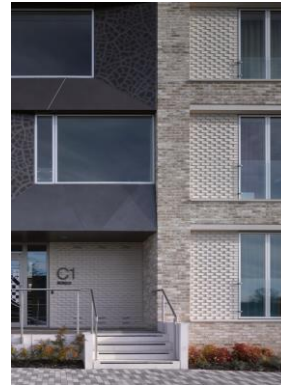
## UPPINGHAM

1584 Forward

For the forward thinkers, makers,  
debaters and creators.  
The pioneers who ask why. And why not.  
For tomorrow's leaders;  
not defined by where they have gone.  
But where they are yet to go.



# The Team



**rhp** are award winning architects with specialisms in conservation, regeneration, building in historic context and award winning new residential buildings for education based clients – Universities, Oxbridge Colleges and commercial providers.

We believe buildings should be beautiful and practical and should be designed to respond to their unique physical and social context.

With craftsmanship and sustainability awards for all of our most recent buildings of similar scale we enjoy working with traditional materials and forms and designing buildings which are well crafted, long life, adaptable and will stand the test of time in their environments.

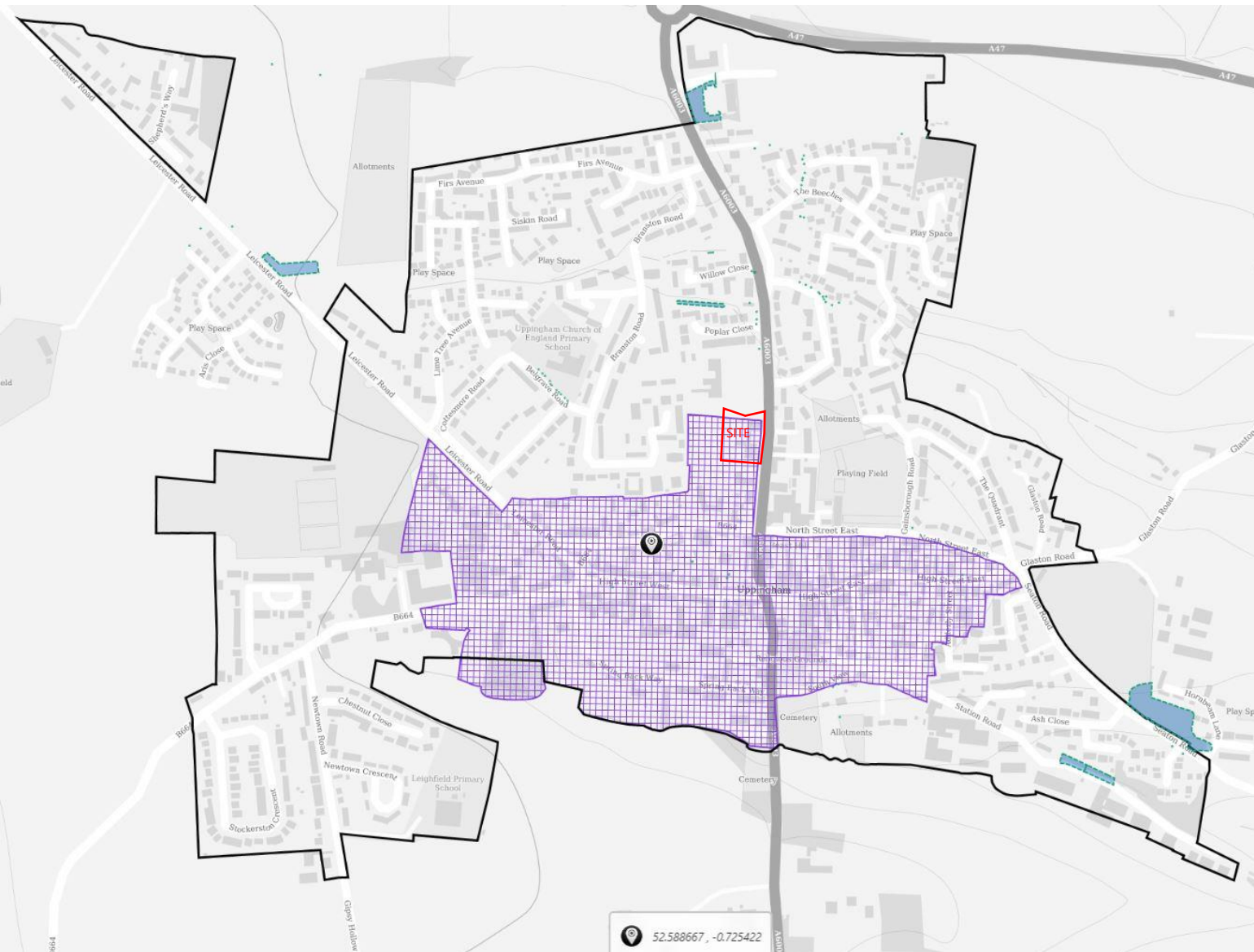
We aim to enrich the locality as well as the users experience of the site.

Project Manager  
Quantity Surveyor  
Structure & Civils  
M&E/Sustainability  
Planning Consultant  
Landscape  
Transport  
Fire Consultant  
Ecology  
Archaeology/Heritage  
Arboriculture  
Approved Inspector

**Ridge & Partners**  
**CB3 Consulting Ltd**  
**Conisbee**  
**Max Fordham**  
**Fisher German**  
**Livingston Eyre Associates**  
**Mayer Brown**  
**Jenson Hughes**  
**CBE Consulting**  
**ULAS**  
**Ligna Consultancy**  
**Salus**

Site

# Planning Context : Conservation Area



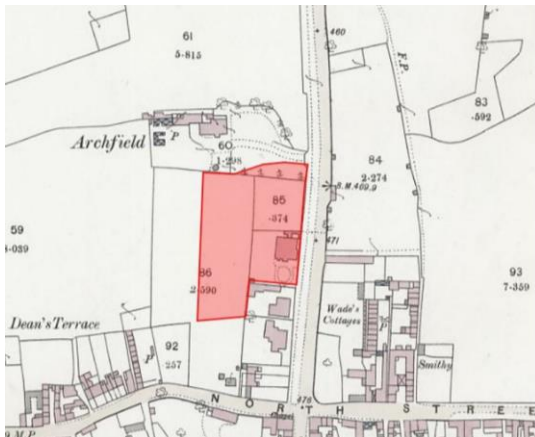
## Meadhurst : Site Location



The site is located to the north side of Uppingham with frontage to Ayston Road (A6003).

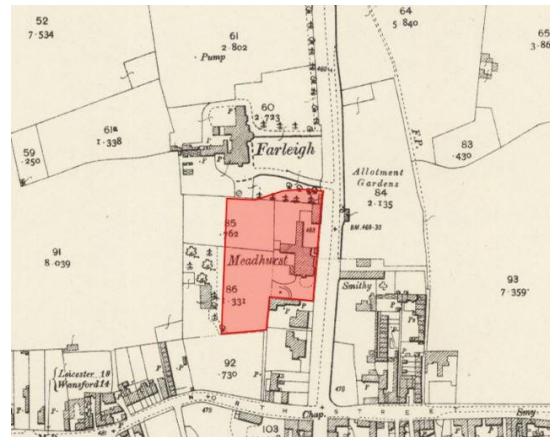


## Historic Context



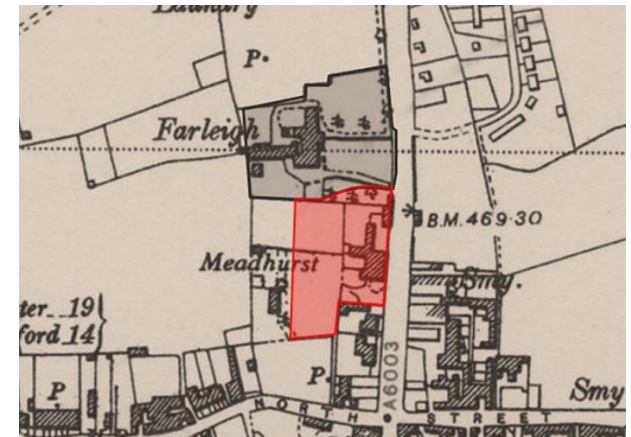
1885

*'Meadhurst' opened as a 'country house' boarding house in 1896.*



1904

*Accommodation wing constructed between 1885 and 1906.*



1952

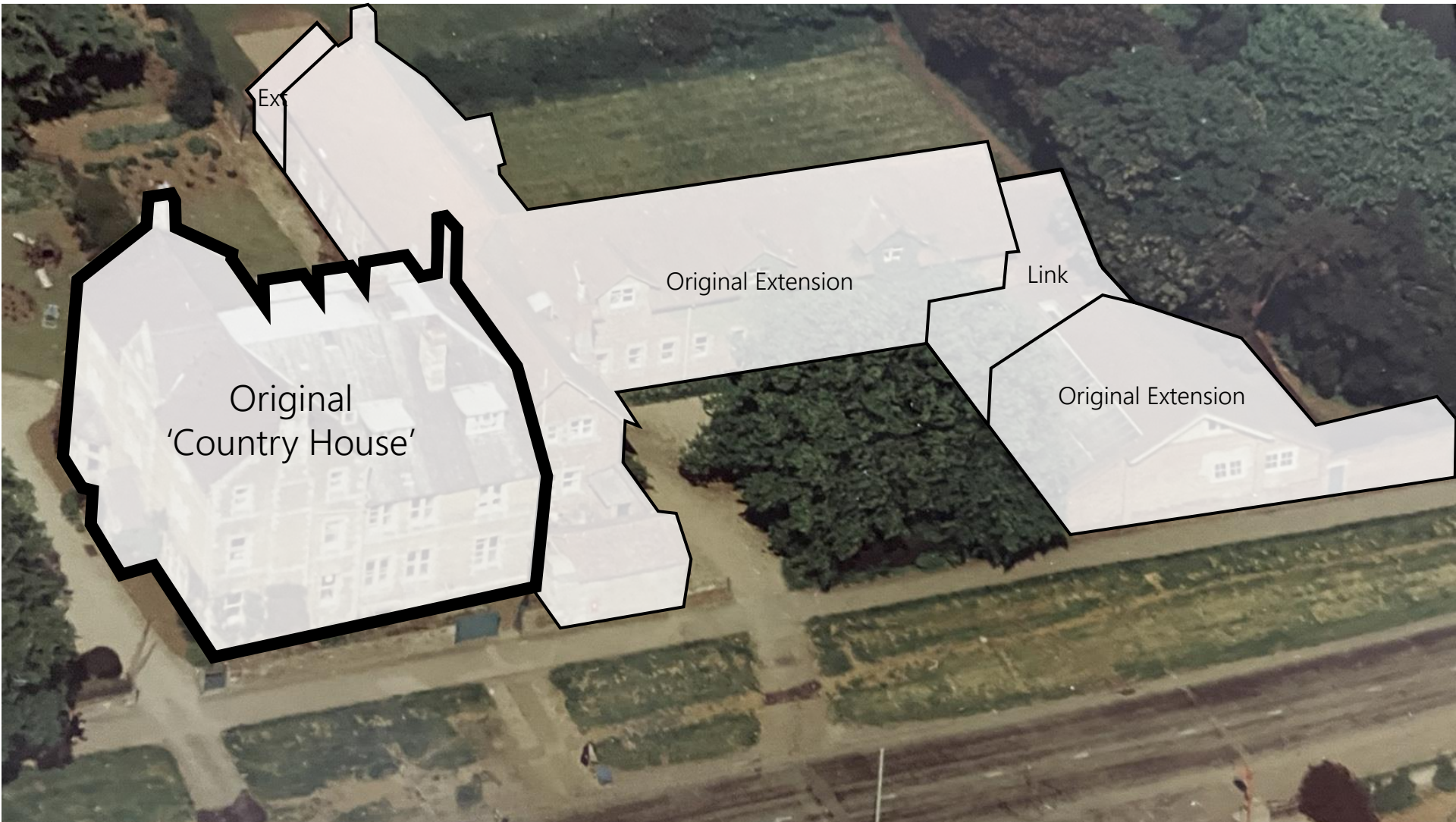
*No notable changes between 1904 and 1952.*

## Existing Building

---



## Existing Building : Evolution



1900



1910



1920



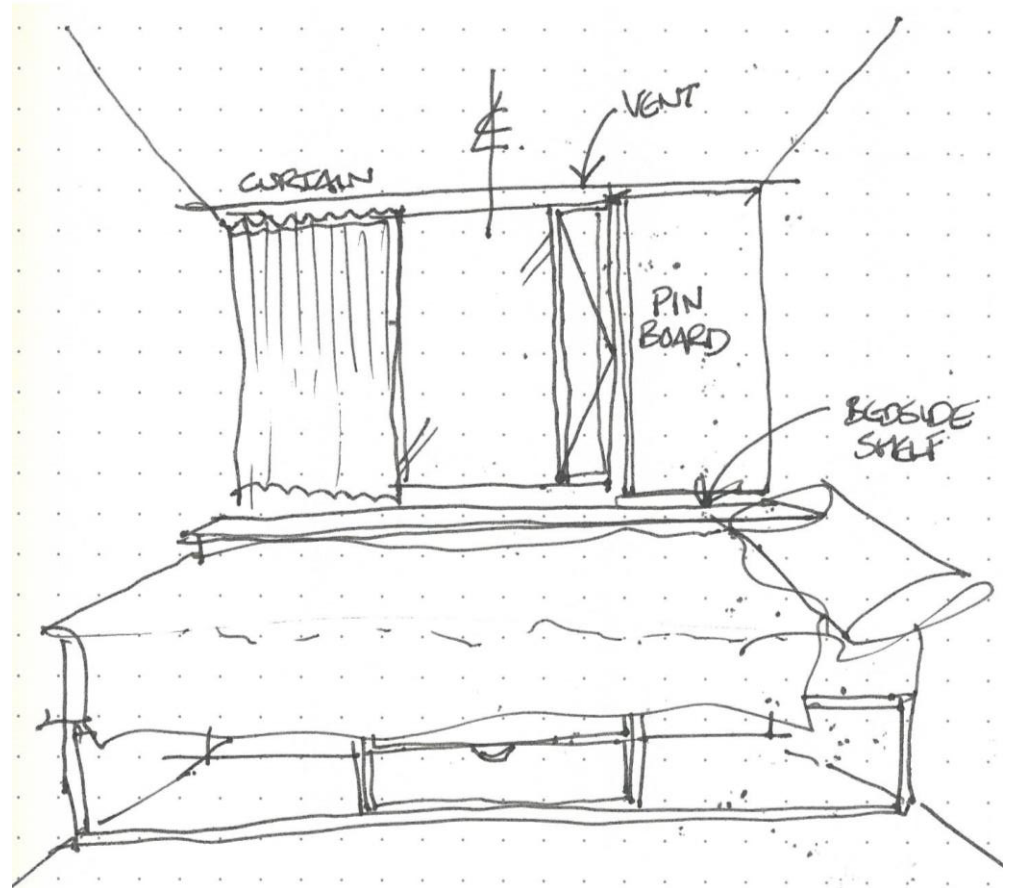
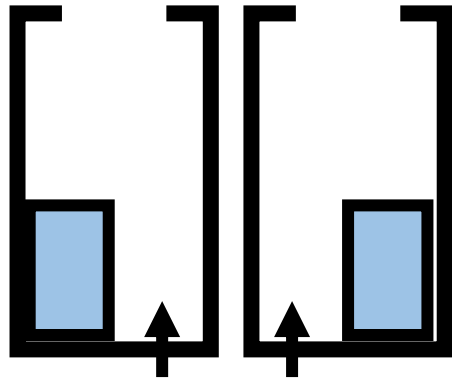
**rhp**

2023



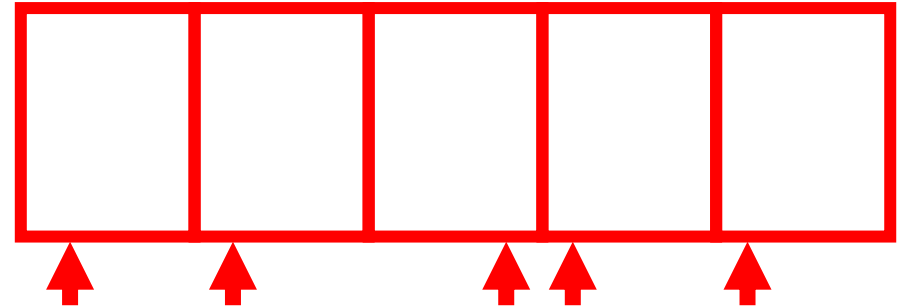
Use

# Boarding House



# Townhouse Concept

- *More Space Efficient Arrangement*
- *Range of Scales of Community Encourages Interaction & Family Feel*



Concept

# Approach

---

## Sustainable, Long-Life, Low Maintenance, Low-Carbon Design:

- Use traditional contextual materials;
- Minimise carbon in construction and in use:

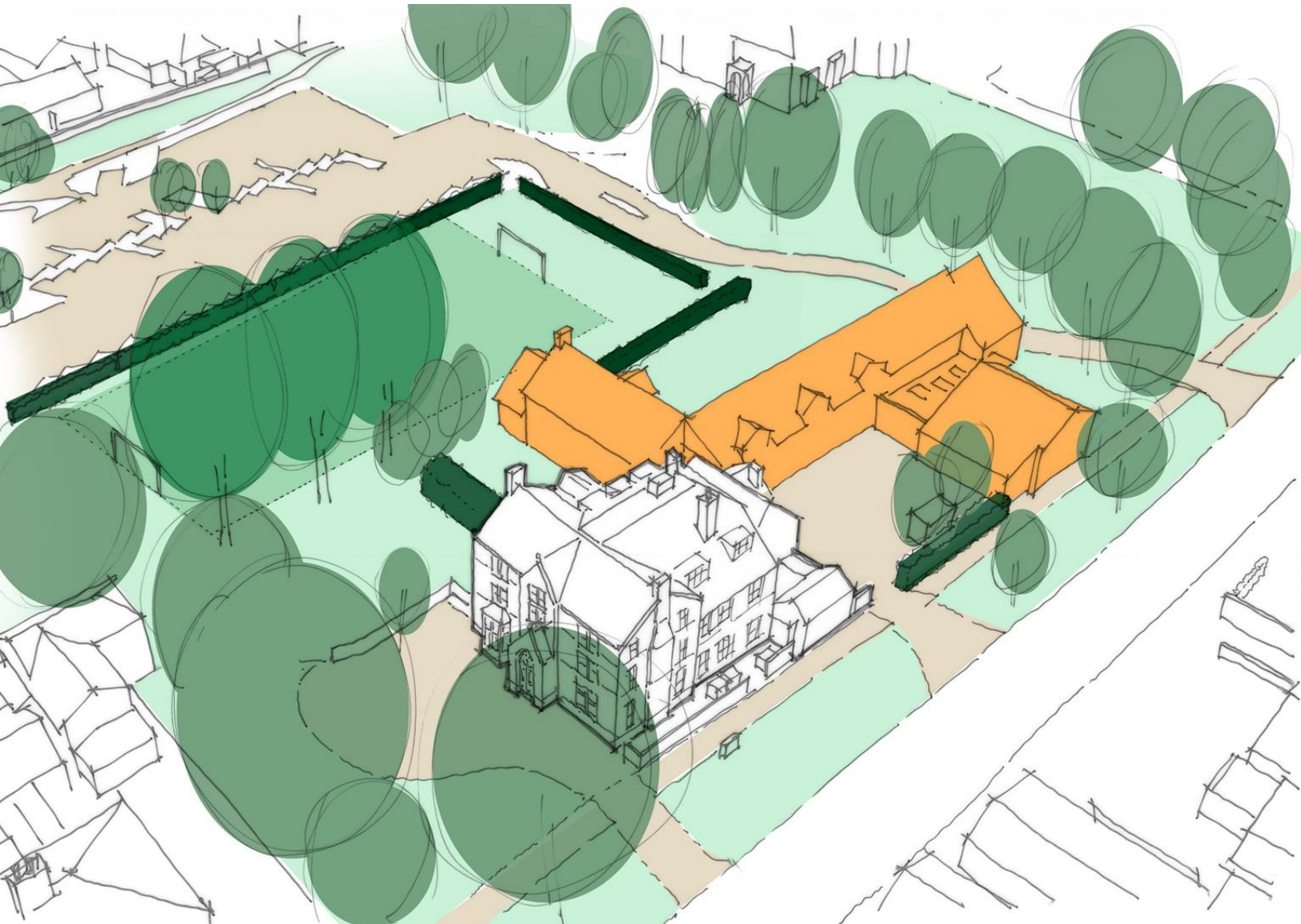
## Key Considerations & Drivers for Design Development:

- Efficient and effective use of materials;
- Minimise bulk/form/massing;
- Integrate plant into building form where possible;
- Consider form factor, air tightness and solar control and heat gain within the design approach;
- All electric – air source heat pumps, MVHR ventilation systems, high levels of air tightness and insulation to reduce heating demand;

## Approach : Existing



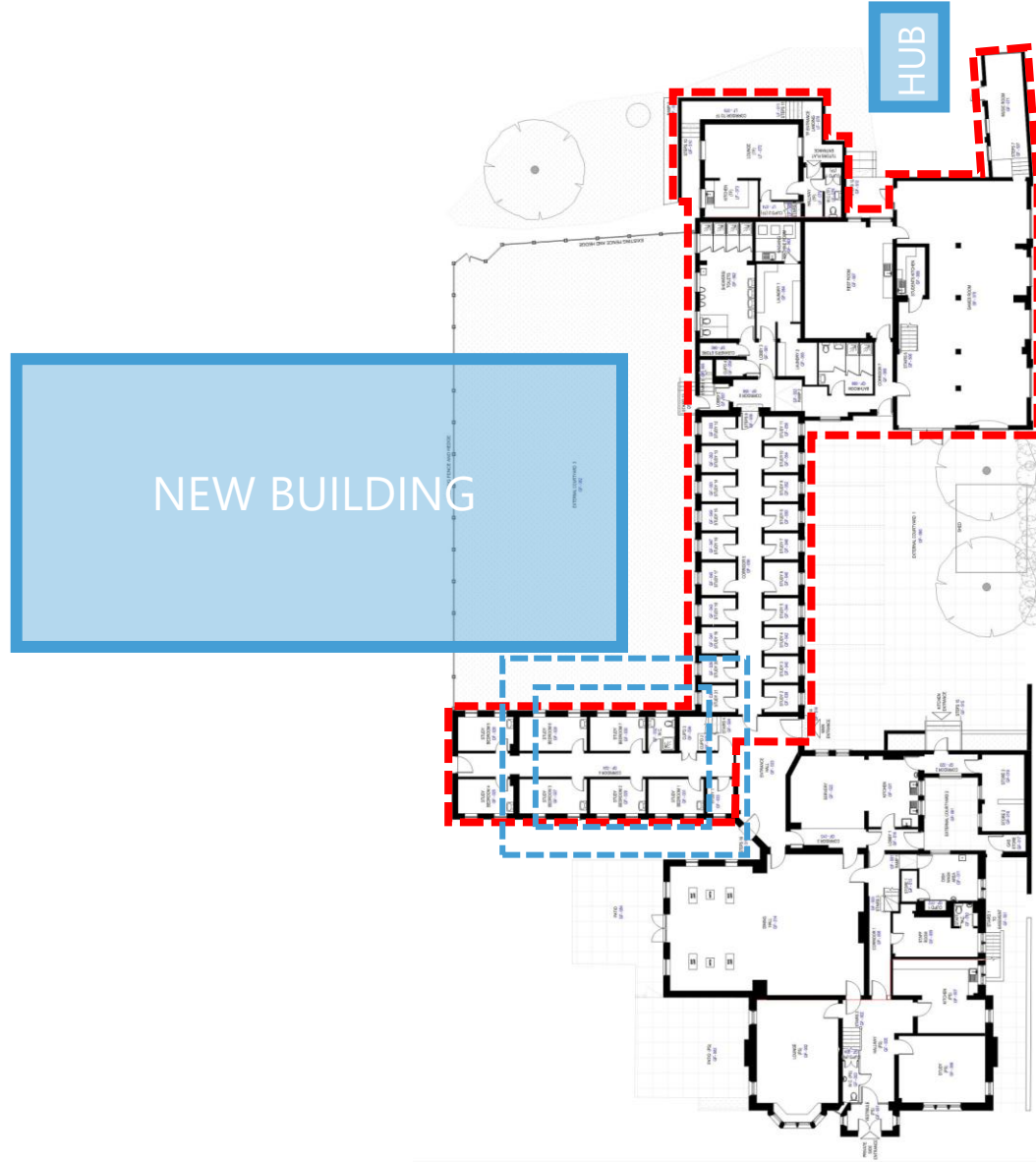
## Approach : Demolition



## Approach : New Meadhurst

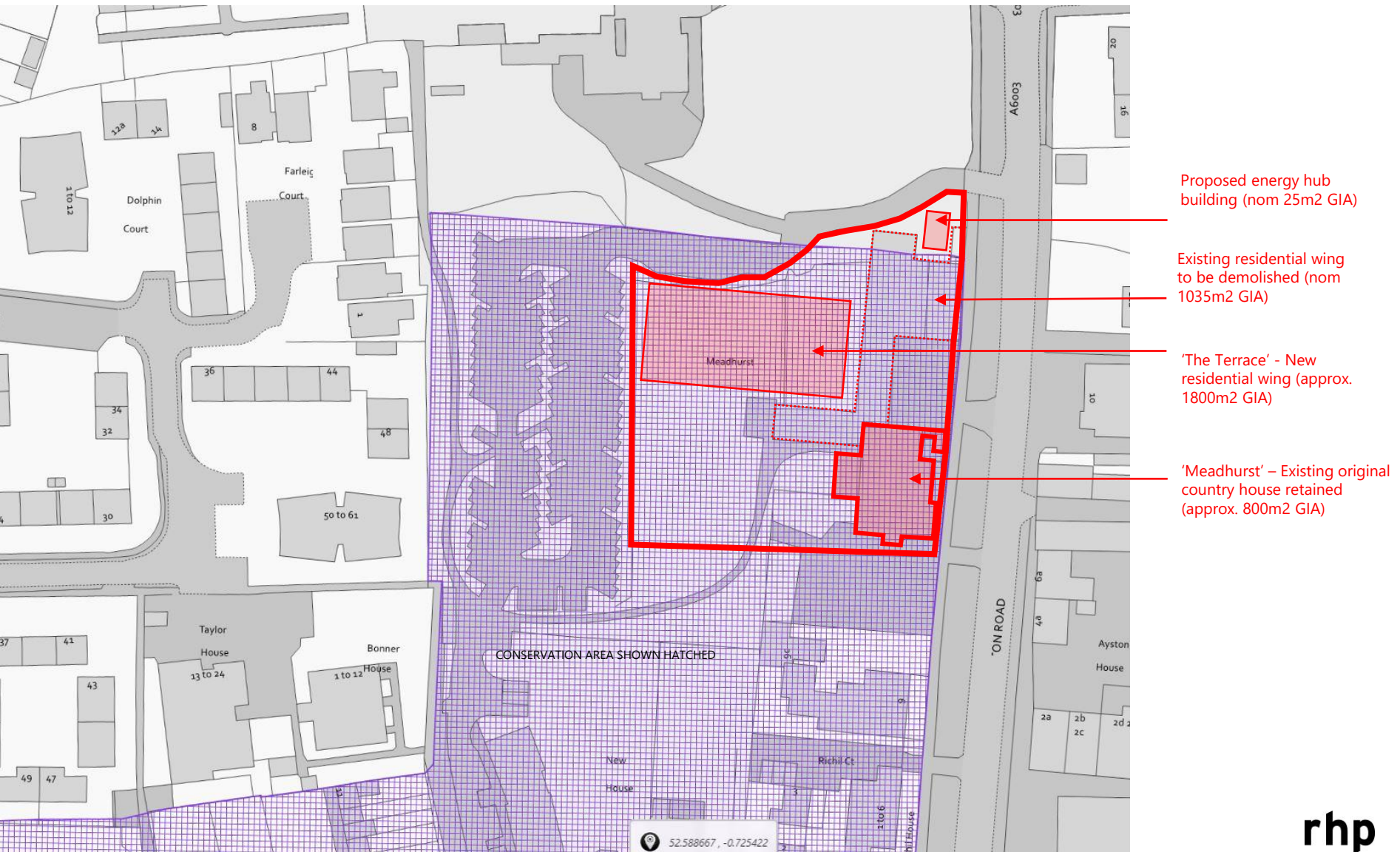


# Meadhurst : Existing Ground Floor Plan



Ayston Road (A6003).

# Summary of Development Proposed



Streetscape

## Existing Streetscape



## Streetscape Changes



*Demolition of Existing Building*



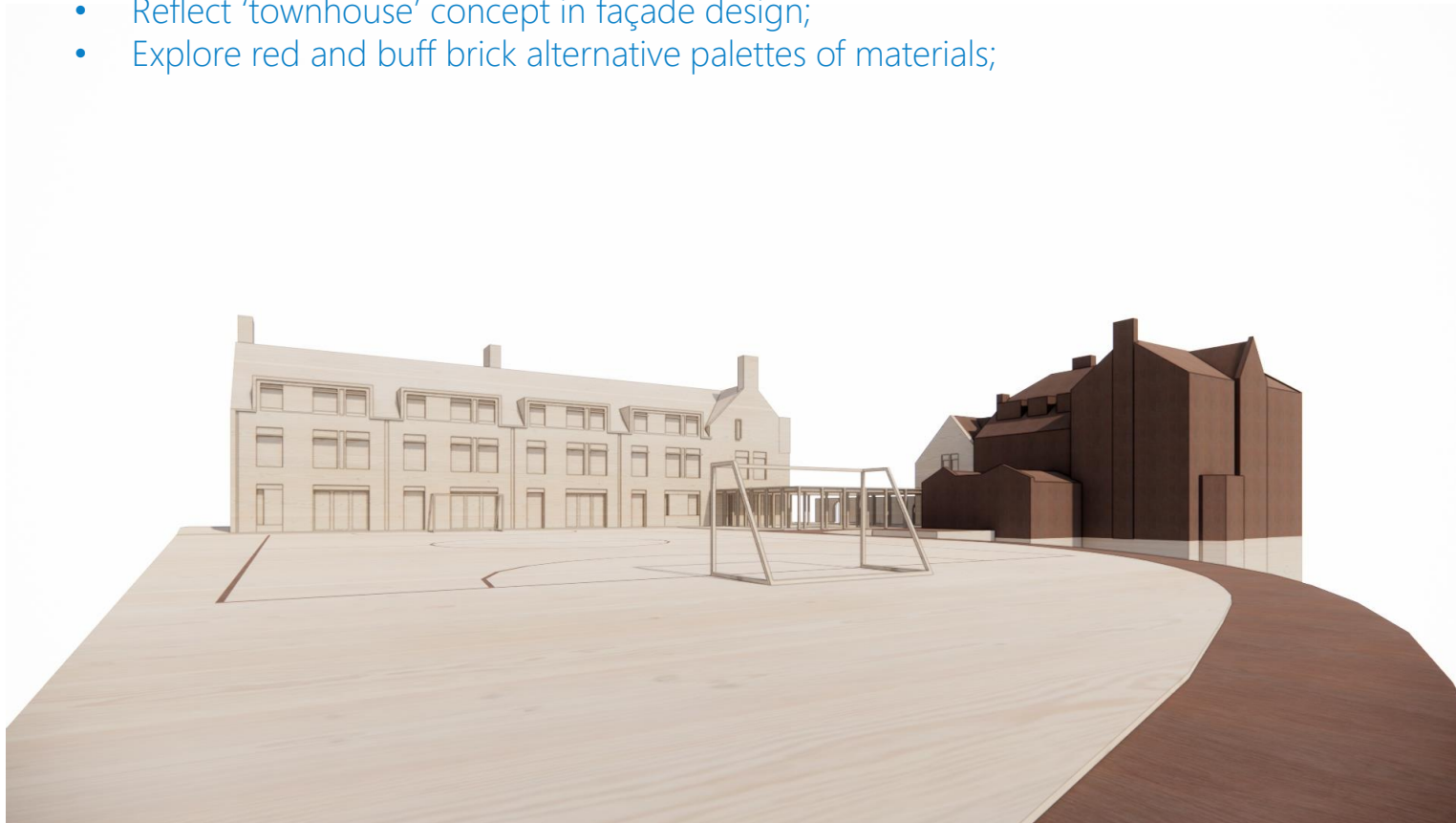
*Creating New Energy Hub*

# PreApp Planning Feedback & Discussions

## Planners Initial Comments

---

- Simple, modern and complementary design;
- Subservient relationship with main house in scale/massing and materiality – don't detract from main house;
- 'Don't like the dormers', explore alternative massing/rooflines;
- Reflect 'townhouse' concept in façade design;
- Explore red and buff brick alternative palettes of materials;

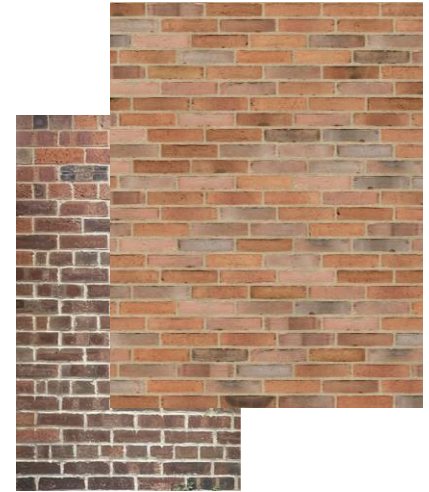


Materials : Work-In-Progress

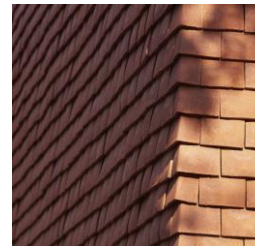
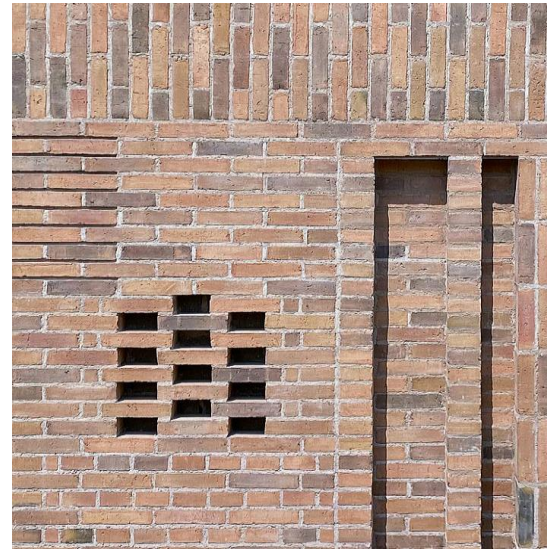
## Existing Building Materials



## Existing Building Materials



# Materials Palettes Being Explored with Planners



# Massing Strategy : Work-In-Progress

# Approach

---

## Sustainable, Long-Life, Low Maintenance, Low-Carbon Design:

- Use traditional contextual materials;
- Minimise carbon in construction and in use:

## Key Considerations & Drivers for Design Development:

- Efficient and effective use of materials;
- Minimise bulk/form/massing;
- Integrate plant into building form where possible;
- Consider form factor, air tightness and solar control and heat gain within the design approach;
- All electric – air source heat pumps, MVHR ventilation systems, high levels of air tightness and insulation to reduce heating demand;

## Meadhurst : Pupil Approach



## Meadhurst : Pupil Approach

- No Dormers – feels 'bulky'?
- Red Brick/Plain Tile – too red?
- *Can we reduce bulk?*
- *Can we lower carbon?*
- *Material options?*
- *Hide PV?*



## Meadhurst : Pupil Approach

- Reduced Pitch to Roof
- Softer Red Brick Mix
- Lower Overall Height/Bulk
- Less Materials : Less Carbon
- Hidden PV



## Meadhurst : Pupil Approach

- Reduced Pitch to Roof
- Softer Red Brick Mix
- Lower Overall Height/Bulk
- Less Materials : Less Carbon
- Hidden PV



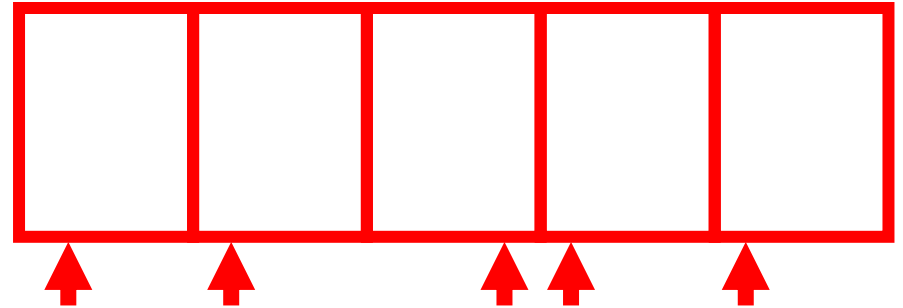
## Meadhurst : Pupil Approach

- Reduced Pitch to Roof
- Softer Red Brick Mix
- Lower Overall Height/Bulk
- Less Materials : Less Carbon
- Hidden PV

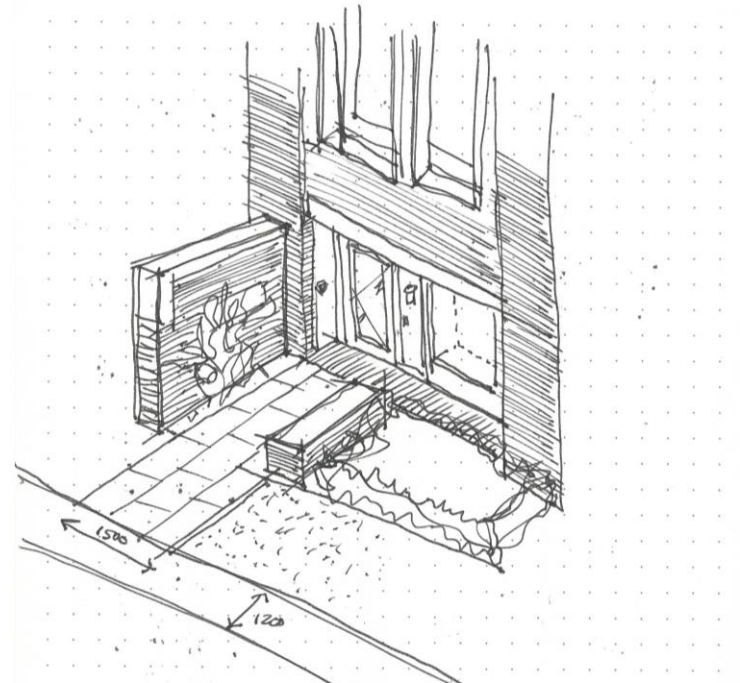
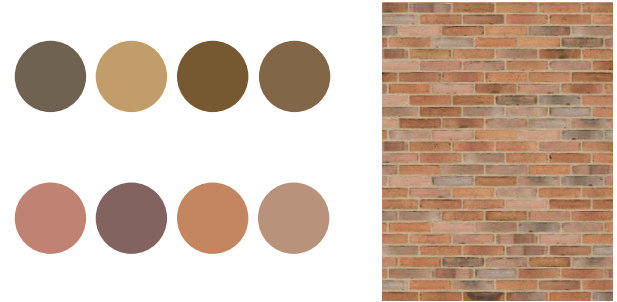


## The Terrace of Townhouses

- 5 Houses
- 4 Pupils + 1 Deputy Housemaster
- A 'family' of houses with variations



## Materials Palettes Being Explored with Planners



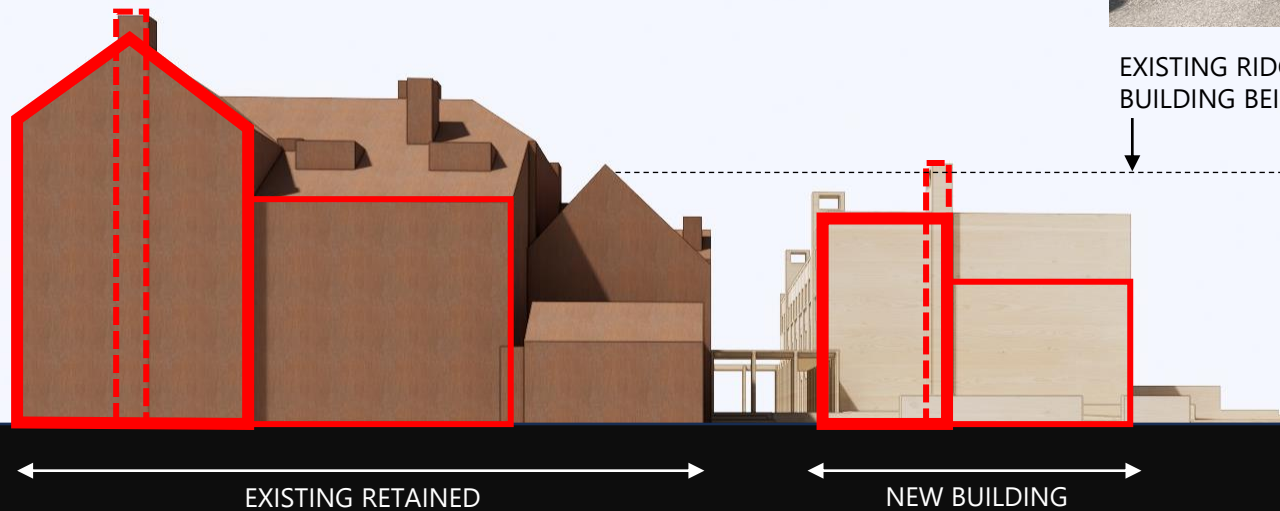
**rhp**

## Meadhurst : Streetscape

---



## Meadhurst : Streetscape



EXISTING RIDGELINE OF  
BUILDING BEING DEMOLISHED

## Meadhurst : Streetscape

---



## Meadhurst : Streetscape Proposed

