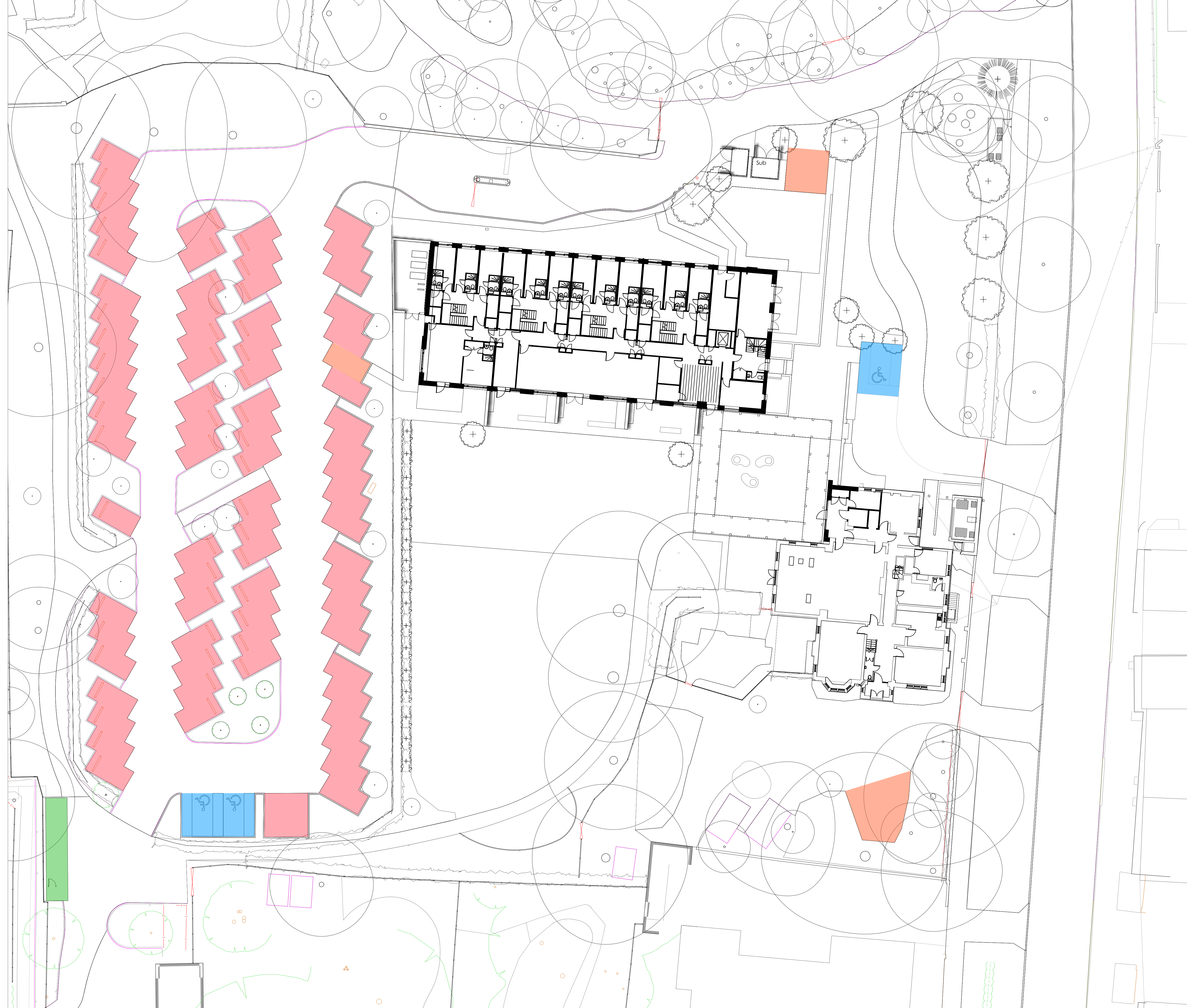


**KEY**

- Existing Staff Carpark**  
75 standard parking spaces serving whole school
- Accessible Parking Spaces**  
Two in existing car park  
One new at front of Meadhurst
- Dedicated Parking Spaces**  
For Housemaster, Deputy Housemaster and Tutors
- Existing Cycle Parking**  
Sheffield cycle stands with shelter



P02 Revised to suit new layout LJS 24.01.24

**UPPINGHAM SCHOOL, MEADHURST**  
FOR UPPINGHAM SCHOOL

**Parking**

**DRAWING NO:** 4403-LEA-00-00-DR-L-1008 **REVISION NO:** P02

Scale: 1:200 @ A1 Date: 24/01/2024 Status: Information

LIVINGSTON EYRE ASSOCIATES  
UNIT SEVEN 16 HOXTON SQUARE LONDON N1 6NT  
tel 020 7247 8911 www.livingstoneyre.co.uk  
landscape architects and urban designers