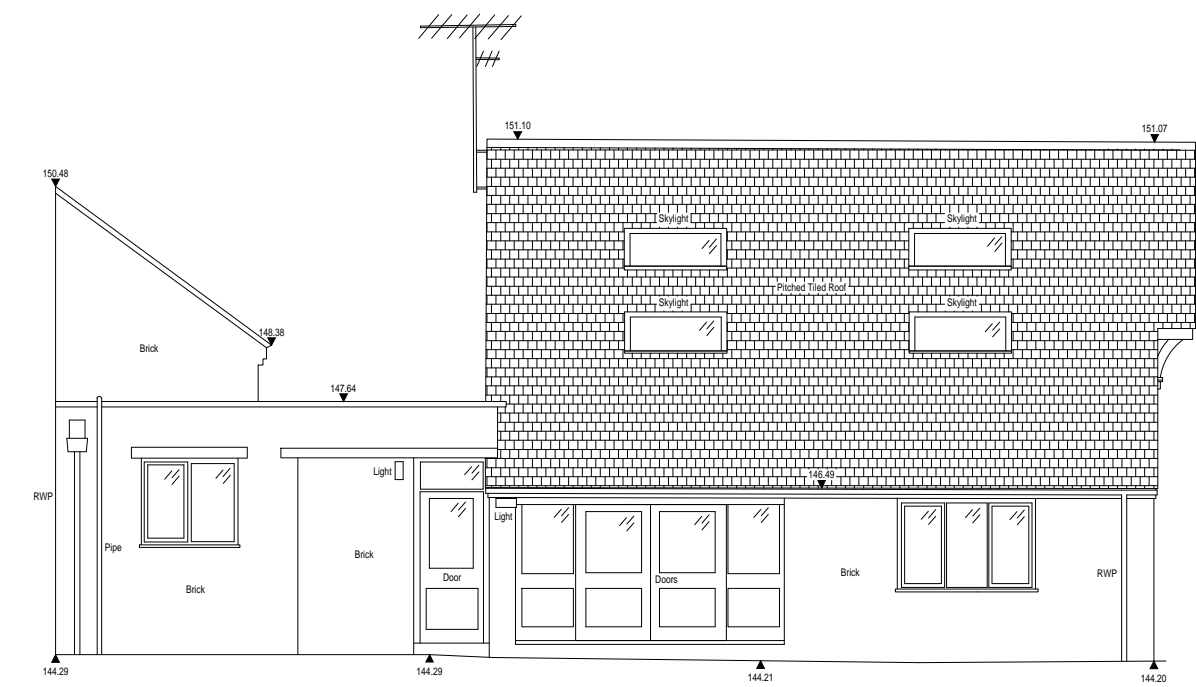
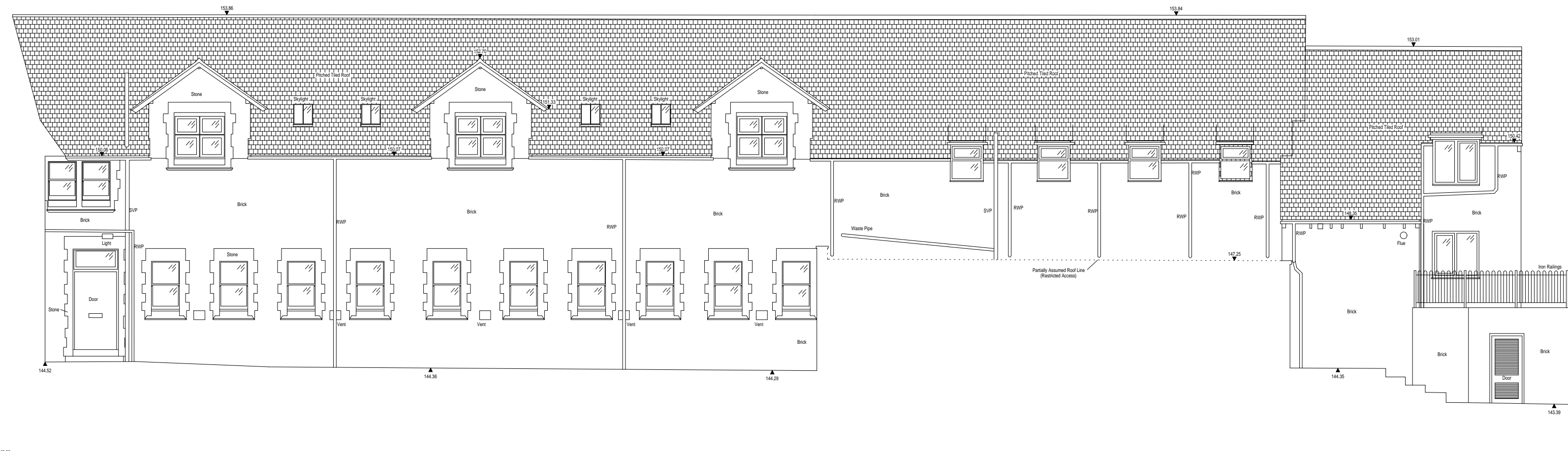




Elevation A



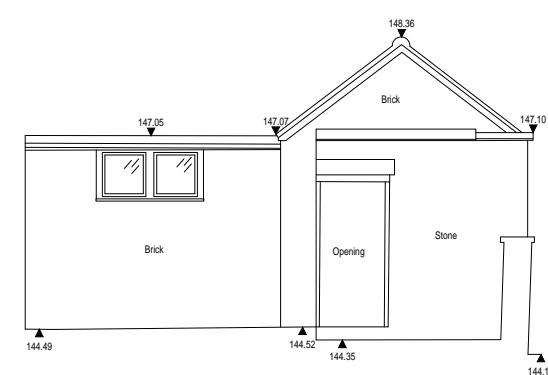
Elevation B



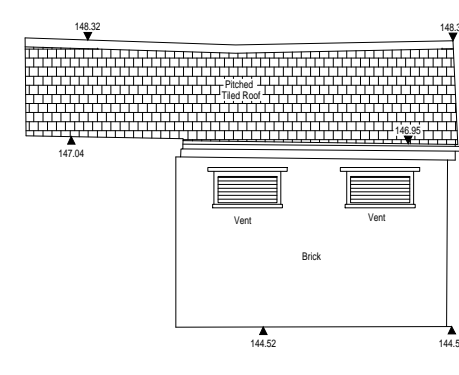
Elevation C



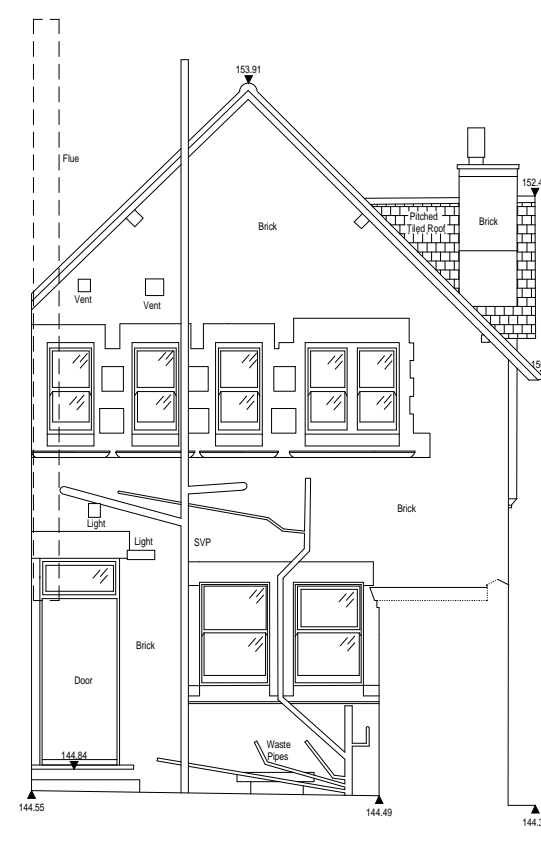
Elevation D



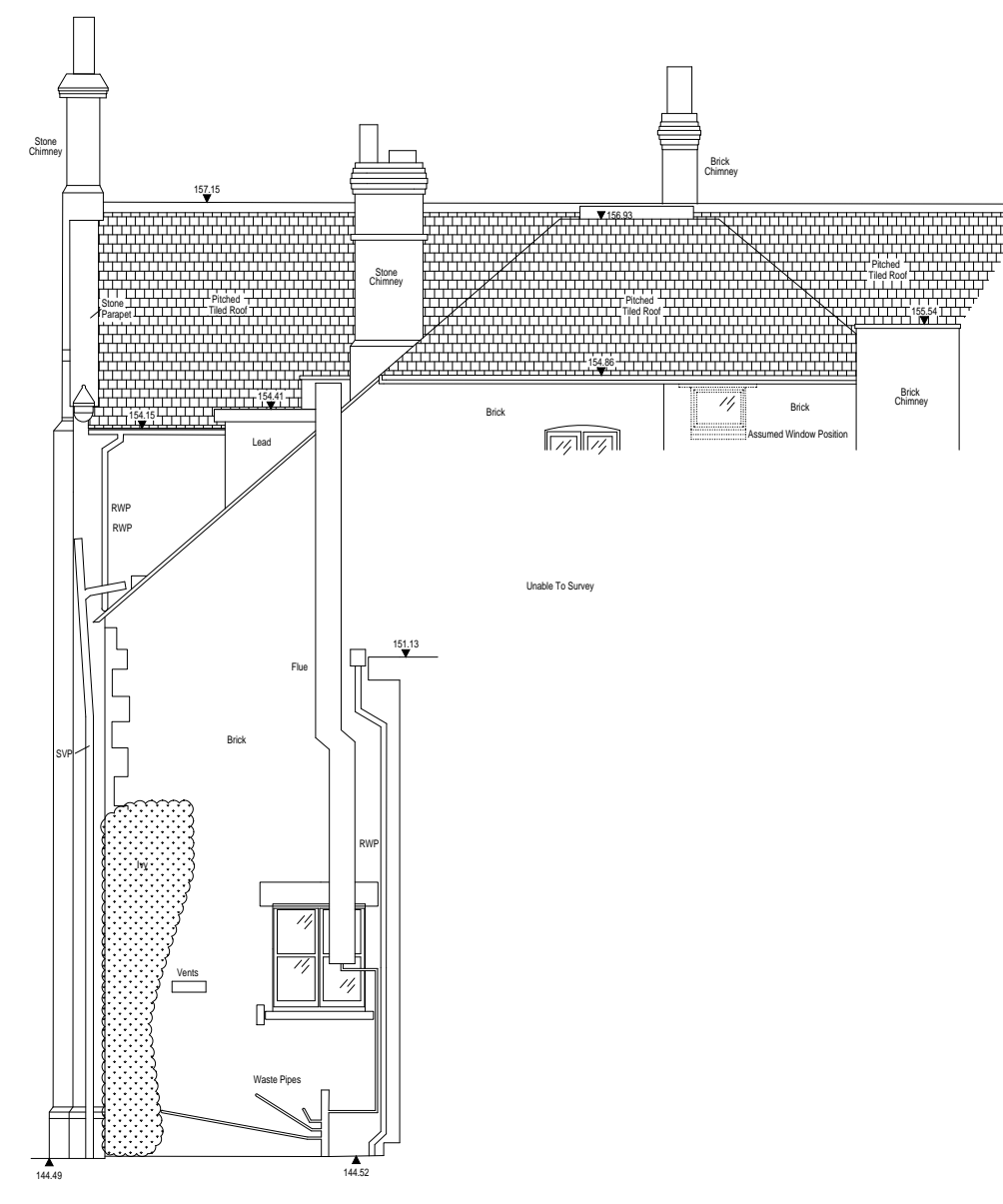
Elevation E



Elevation F



Elevation G



Elevation H

Orientation

Grid Plan co-ordinates relate to a local survey grid coincident with OS National Grid. SF = 1 applied at Station 18

Levels relate to OS Newlyn datum by multiple RTK GNSS observations. Station 18 used, value given = 146.452m

Notes:

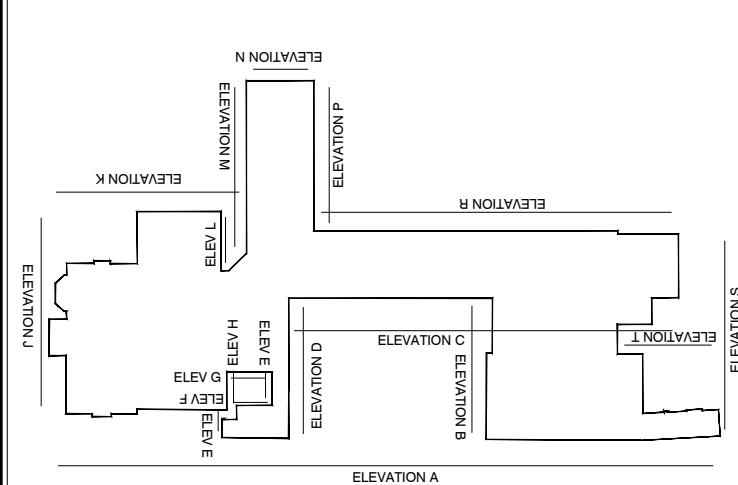
Legend

AB	Air Brick	I/R	Iron Railings
B	Bollard	Lt	Light
C/B	Close Boarded	P	Post
CH	Cill to Head	Pe	Pipe
C/L	Chain Link	P/R	Post & Rail
Col.	Column	P/W	Post & Wire
Cpd	Cupboard	RD	Roller Door
CR	Crown Level	RE	Rodding Eye
DB	Distribution Box	RWP	Rainwater Pipe
Dr	Drain	SD	Sliding Doors
FE	Fire Exit	S	Sill Height
FC	Floor to Cill	SP	Spring Point
FL	Floor Level	SW	Soil & Vent Pipe
FW	Foul Water	US	Surface Water
MH	Manhole	UTL	Underside
G	Gully	VT	Unable To Lift
H	Window Head Ht	VP	Vent Pipe
IC	Inspection Chamber	Vt	Vent
IL	Invert Level	WT	Water Tap

2.70 Floor to Ceiling Ht F2.70 False Ceiling Ht

Mains Point	Stairs/Steps (UP)
Blank Plate	Isolator Switch
Light	Water Stop Tap
Strip Light	Overhead Features
Switch	Joist Span Direction
Pendant Switch	Sloping Ceiling (Up)

Key:



A Issue: 19.03.19 KP

Rev No	Revision Note	Date	Signed
1			



4 Worcester Close  
West Haddon  
Northants, NN6 7GN  
Tel: 01604 582200  
mail@aimcon.co.uk  
www.aimcon.co.uk



TOPOGRAPHICAL SURVEYS  
3D LASER SCANNING

MEASURED BUILDING SURVEYS  
LAND REGISTRY COMPLIANT PLANS

Client Uppingham School

Title Elevations  
Meadhurst  
Site 11 Asyton Road  
Uppingham, LE15 9RP

Surveyed KP Date 19th March 2019

Sheet No 1 of 3 Scale 1/100 @ A1

Dwg No. 01-2149-1 Rev. A