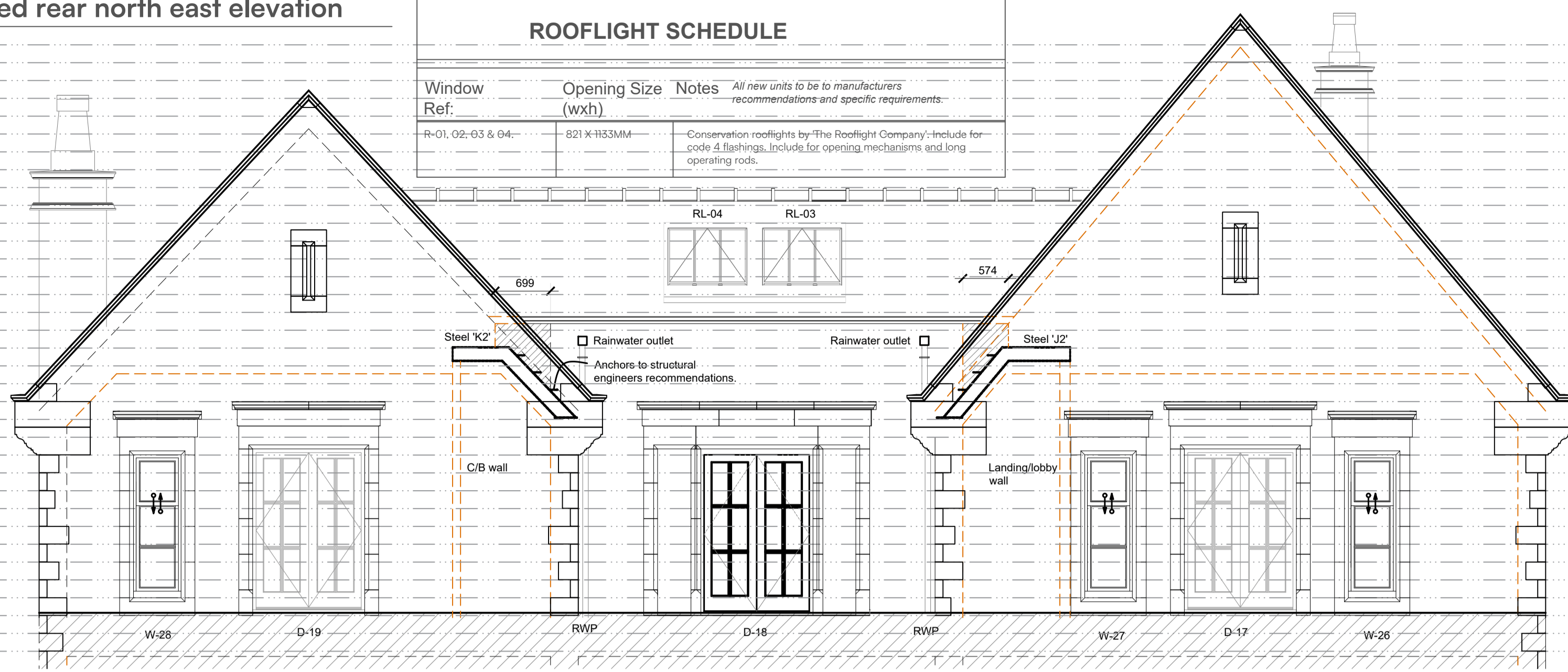


Proposed rear north east elevation

Scale 1:50

ROOFLIGHT SCHEDULE

Window Ref.	Opening Size (wxh)	Notes
R-01, 02, 03 & 04	821 X 1133MM	Conservation rooflights by 'The Rooflight Company'. Include for code 4 flashings. Include for opening mechanisms and long operating rods.



WINDOW SCHEDULE

Window Ref.	Opening Size (wxh)	Window size (wxh)	Notes
W-01, 05, 07, 11, 12, 14, 15	600 x 1353mm	650 x 1378mm	Side hung casement - escape window.
W-03 & 13.	426 x 1953mm	475 x 1978mm	SEE BAY WINDOW DETAIL A DRAWING - 1638 - 58 5No. windows per floor for each bay.
W-02, 04, 20, 22, 26, 27 and 28	600 X 1803mm	650 x 1828mm	Timber sliding sash window with springs
W-06	2 x 1400 X 1353mm	2 x 1450 X 1378mm	Side hung casements - see Detail H on drawing 1638-60
W-08	1400 X 1128mm	1450 X 1153mm	Side hung casement with flying mullion constructed as an escape window.
W-09, 10 and 25.	1400 X 978mm	1475 X 1003mm	Side hung casements.
W-16, 19, 29, 31, 32 and 34	600 X 1128mm	650 x 1153mm	Side hung casement - escape window.
W -17 & 18	2 x 412.5 X 1503mm	462 X 1528mm	Sliding sash windows - see Detail C on drawing 1638-59
W -21 & 33	426 x 1865mm	475 x 1890mm	SEE BAY WINDOW DETAIL A DRAWING - 1638 - 58 5No. windows per floor for each bay.
W -23 and 24	1100 X 1053mm	1150 X 1078mm	Side hung casements - see Detail F on drawing 1638-60
W-30	915 X 1128mm	965 X 1153mm	Side hung casement - escape window.

All windows in painted timber with 22-24mm double glazed units. Trickle vents - 800mm² to habitable rooms, 400mm² elsewhere. Allow to fit all windows, including mastic, etc and to fit all required ironmongery. Escape windows to be a minimum of 450mm free space width or height and a minimum of 0.35 meters squared of free space to escape.



CHARTERED ARCHITECTS | CHARTERED SURVEYORS
PROJECT MANAGEMENT

Belton St • Stamford • PE9 2EF

Phone: 01780 482483
Email: mail@rtkuk.com
Website: www.rtkuk.com



Revision/Issue Notes:

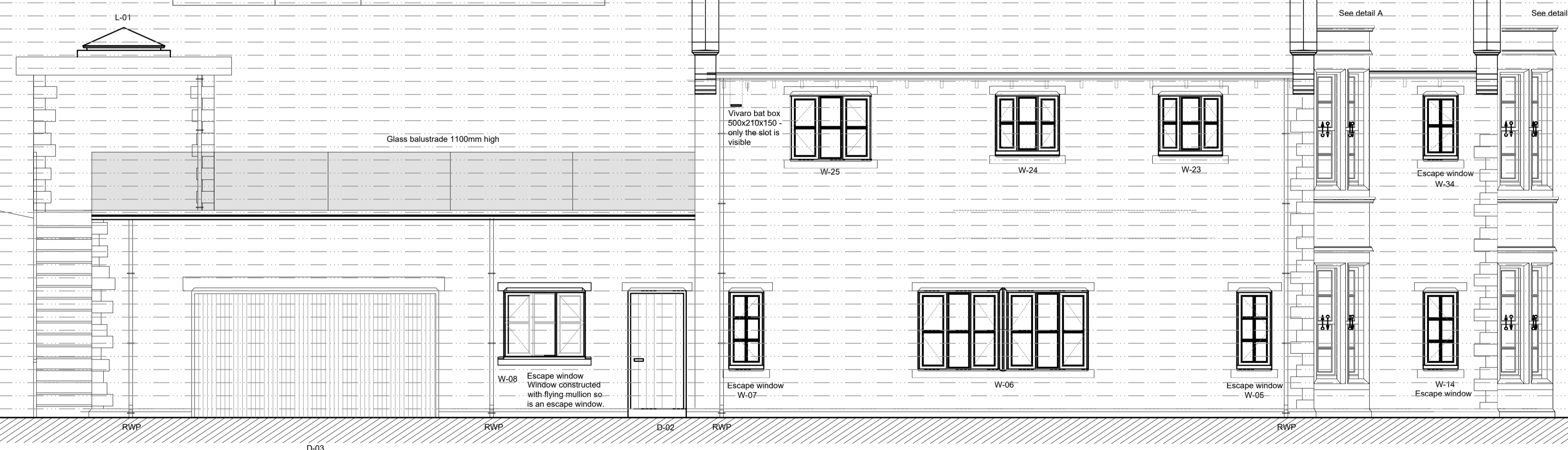
Rev:	Notes	Issue Date:	By:
B	Steels shown	12/12/23	CJT
C	Doors and windows revised	06/01/24	CJT

Proposed rear north west elevation

Scale 1:50

LANTERN TO GARDEN ROOM

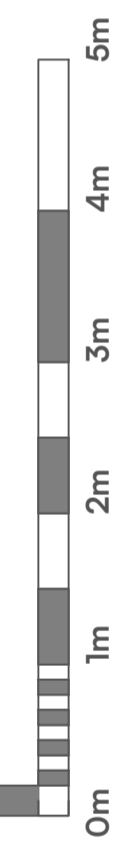
Window Ref.	Opening Size (wxh)	Notes
L-01	4500 X 1500MM	Double glazed powder coated aluminium operable lantern. Manufacturer to be advised.



STEEL SCHEDULE - To be confirmed by SE details

Steel Ref.	Approx. size	Notes
A	Goal post arrangement Beam -250 x 150 x 8 RHS with 8mm BTM Plate, Columns 100 x 100 SHS	Beam over garage door in goal post arrangement as structural engineers details.
B	254 x 102 x 28 UB	Beam to terrace side skin to receive plank flooring loads - see structural engineers details.
C	356 x 368 x 129 UC	Beams support the garden room walls over and to be clad in double plasterboard and skim to achieve 3 hour fire resistance.
D, E & F	200 x150 x 8 RHS with 8mm plate to the underside.	Plate to extend 150mm to receive the ends of the beam and block floor beams
G	2No. 254 x 146 x 43 UB's	
H	254 x 146 x 31 UB	Ridge beam sat on Columns C1 and C' - 100 x 100 6.3 SHS
J & K	2No. 254 x 102 x 19 UB (2No each of J & K)	Beams on 300mm long concrete padstones with full 100mm end bearing to support cavity wall over. - see structural engineers details
L	178 x 102 x 19 UB	
M	254 x 102 x 28 UB	Beam to inside skin - see structural engineers details.
N & P	2No. 178 x 102 x 19 UB	Beams on 300mm long concrete padstones with full 100mm end bearing to support cavity wall over. - see structural engineers details
Q	254 x 102 x 28 UB	Beams on 300mm long concrete padstones with full 100mm end bearing to support cavity wall over. - see structural engineers details
R, S & T	254 x 102 x 28 UB	
Column C1 & C2	305 x 305 x 107 UC	
V	200 x 150 x 6.3mm Steel with 6mm plate to the underside.	
W	2No. 254 x 146 x 31 UB	Beam to support plank flooring beam

NOTE:
P1: 100mm bearing on 300mm padstone
P2: 200mm bearing on 300mm padstone.
See structural engineering calculation sheets produced by McLaughlin Associates. Tel: 07973 752458

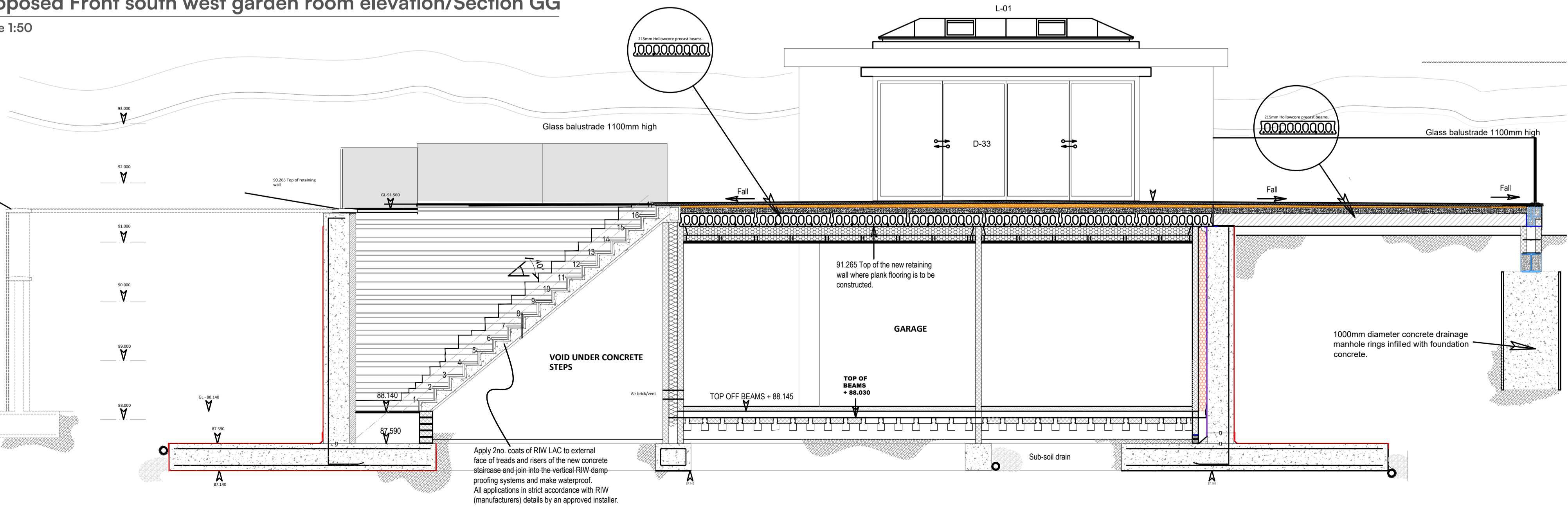


Visual Scale 1:50

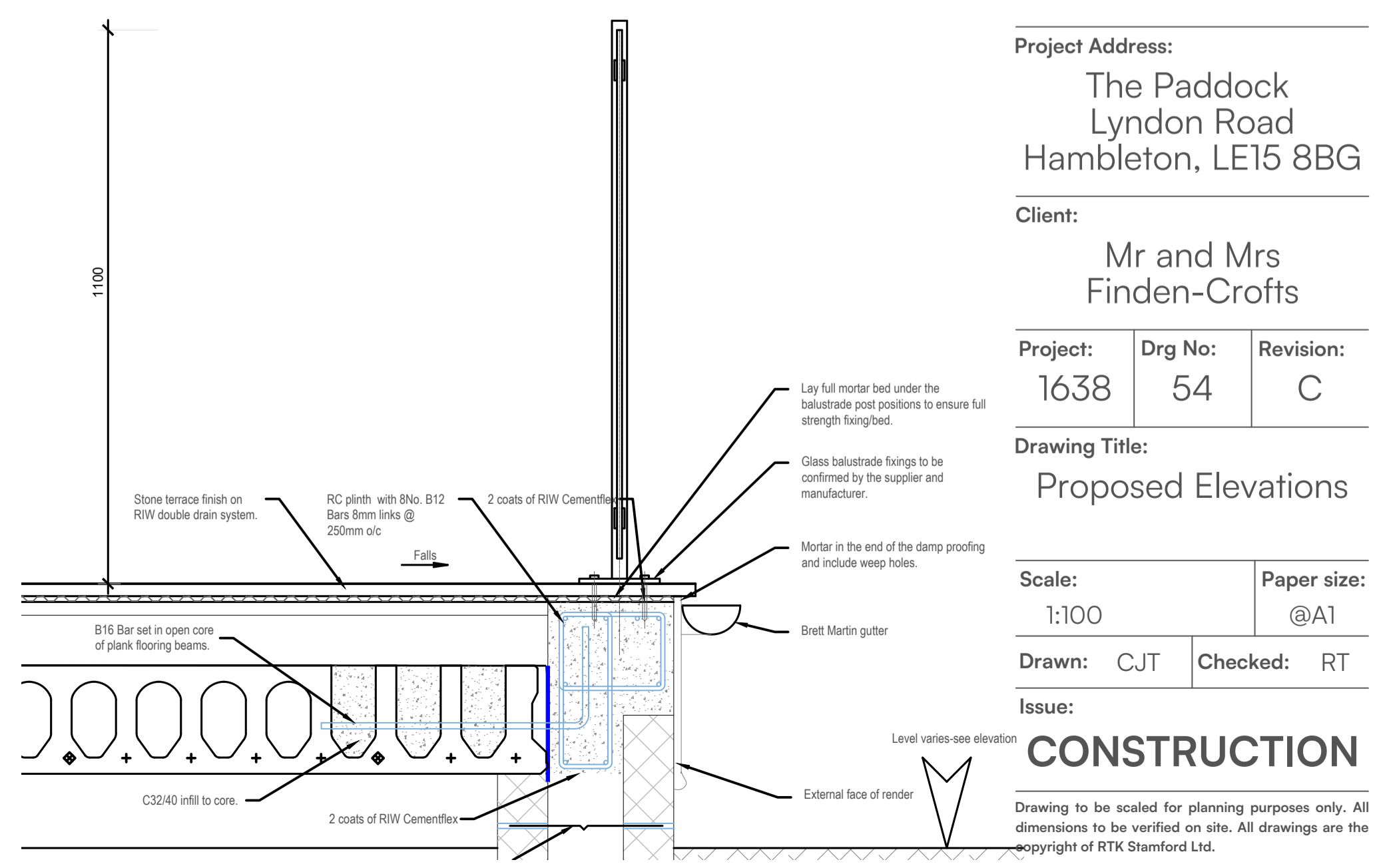
Project Name:
Replacement Dwelling

Proposed Front south west garden room elevation/Section GG

Scale 1:50



Typical Balustrade Detail - 1:10



Project Address:
The Paddock
Lyndon Road
Hambleton, LE15 8BG

Client:
Mr and Mrs
Finden-Crofts

Project:	Drg No:	Revision:
1638	54	C

Drawing Title:
Proposed Elevations

Scale:
1:100

Paper size:
@A1

Drawn: CJT
Checked: RT

Issue:
CONSTRUCTION

Drawing to be scaled for planning purposes only. All dimensions to be verified on site. All drawings are the copyright of RTK Stamford Ltd.