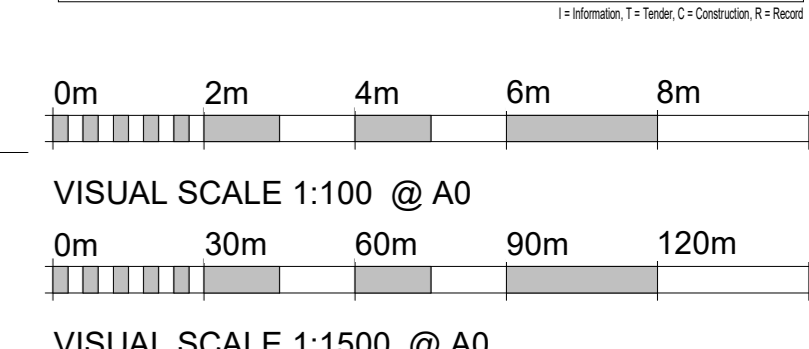


ALL DIMENSIONS TO BE CHECKED ON SITE. COPYRIGHT PROTECTED.

PLANNING



VISUAL SCALE 1:100 @ A0
VISUAL SCALE 1:1500 @ A0

SIGNS B, E, F & G - ILLUMINATED BOX SIGN

(BACKLIT ILLUMINATED BOX FASCIA SIGN WITH LETTERING AS SHOWN ON ELEVATION)
M&S CLOTHING & HOME; M&S FOSSE PARK; M&S FOOD & SPENCER; SIGNAGE ON BACKLIT FLEXFACE SKIN AS PER SIGNAGE MANUFACTURER'S DETAILS

BACKLIT BOX ILLUMINATION TO BE SPREAD EVENLY WITHIN THE LIGHTBOX (BY MEANS OF WHITE LEDS) TO PROVIDE EVEN SPREAD OF LIGHT ACROSS THE SURFACE OF THE SIGN. NO SHADOWING TO OCCUR FROM THE LETTERING FIXINGS.

ECONOMEX ALUMINIUM BOX PROFILE SIGNCASE WITH 16 GAUGE BACKING SHEET POWDER COATED TO BLACK SATIN. REF. RAL 9005.

EXTERNAL PRINTED WHITE FLEXFACE SKIN TO PROVIDE MAXIMUM BRIGHT WHITE ILLUMINATION VIA AGLIGHT WHITE 5000K LEDS. THE SIGNAGE SKIN IS TO BE COMPLETELY OPAQUE.

BUILT UP 3D LETTERING IN 3mm FOLDED ALUMINIUM WET SPRAYED TO RAL 9005. SET BLACK 100% GLOSS. WITH BACKLIT STACKED 3D LETTERING. 'M&S' DEPTH TO MATCH THE WIDTH OF THE STEM 'M'. 'FOOD' DEPTH TO MATCH WIDTH OF THE STEM 'F'. ALL 3D LETTERING OFFSET FROM SIGNAGE FASCIA BY APPROX. 25mm. A SECTION THROUGH THE LETTERS SHOULD BE SQUARE.

SIGNAGE DEPTH TO BE APPROX. 225mm DEEP INCLUDING CAPPING AND SIGNAGE FIXED BACK TO BUILDING CANOPY FRAMING USING DISCREETLY PLACED CONTEMPORARY BRACKETS AND FIXINGS TO STRUCTURAL ENGINEER APPROVAL.

NOTE: ILLUMINATION LEVEL OF FASCIA TO BE 800 CANDELAS/m²

SIGNS A, C, D, J & K - INDIVIDUAL LETTERS

(FACE ILLUMINATED FASCIA SIGNS AS SHOWN ON ELEVATION)
ILLUMINATION TO 3D TEXT TO COMPLY WITH PART L. SIZED AS DETAIL.

LAMP COLOUR 5000K MINIMAX. ILLUMINATION TO BE SPREAD EVENLY WITHIN THE LETTERING (BY MEANS OF WHITE LEDS) TO PROVIDE EVEN SPREAD OF LIGHT ACROSS THE SURFACE OF THE SIGN. NO SHADOWING TO OCCUR FROM THE LETTERING FIXINGS.

FACE ILLUMINATED INDIVIDUAL 3D LETTERS TO BE IN STEEL. FRONT COLOUR TO BE RAL 9005 PERSEUS POLAR FRONT 83 (90). SIDES TO BE JET BLACK 100% GLOSS. REF. RAL 9005. BACKTRANS OF LETTERS FIXED TO POWDER COATED STEEL. COLOUR TO MATCH CURTAIN WALL FRAMES. 3D LETTERING DEPTH AS SAME AS STEM WIDTH OF LETTER 'M' AND LETTER 'F'. LETTER HEIGHT AS PER ELEVATIONS.

MAGIC FILM TO BE APPLIED TO ILLUMINATED FACE IN ORDER TO APPEAR BLACK DURING THE DAY.

NOTE: ILLUMINATION LEVEL OF LEDS WITHIN FACE ILLUMINATED LETTERING TO BE 800 CANDELAS/m²

SIGN I - FACE ILLUMINATED BILLBOARD

(BACKLIT ILLUMINATED STREET FABRIC BILLBOARD)
ILLUMINATION TO COMPLY WITH PART L. SIZED AS DETAIL. LAMP COLOUR 5000K MINIMAX. ILLUMINATION TO BE SPREAD EVENLY TO PROVIDE EVEN SPREAD OF LIGHT ACROSS THE SURFACE OF THE SIGN. NO SHADOWING TO OCCUR FROM FIXINGS.

SIGNAGE FIXED BACK TO BUILDING USING DISCREETLY PLACED CONTEMPORARY BRACKETS AND FIXINGS TO STRUCTURAL ENGINEER APPROVAL.

NOTE: ILLUMINATION LEVEL OF FASCIA TO BE 800 CANDELAS/m²

GENERAL

EACH SIGNAGE MANUFACTURER MUST COMPLETE THEIR OWN SET OF PROJECT SPECIFIC DESIGN DRAWINGS FOR APPROVAL BY THE M&S DESIGN TEAM. THE DETAILS MATERIAL FINISHES AND QUALITY EXPECTED ARE CLEARLY INDICATED. THESE MUST BE ADHERED TO WITHOUT DEVIATION. IT WILL BE ASSUMED BY M&S THAT ALL MANUFACTURERS ARE AWARE OF THIS SPECIFICATION AND THAT AS IT BEING FOLLOWED EXACTLY. NO DEVIATIONS WILL BE ACCEPTED UNLESS AGREED IN ADVANCE BY THE M&S DESIGN TEAM.

SIGN H NOT PART OF ADVERTISEMENT PLANNING APPLICATION
ALL EXTERNAL ALTERATIONS PART OF SEPERATE APPLICATION

REV	DATE	DESCRIPTION	BY	CHECKED
1	11.01.24	INDICATIVE GRAPHIC SHOWN TO SIGN I	RS	FOC
2	11.01.24	ILLUMINATION LEVELS TO SIGN CONFIRMED	RS	FOC
3	11.01.24	BILLBOARD DETAILS SHOWN	RS	FOC
4	11.01.24	NOTE REGARDING SIGN H ADDED	RS	FOC
5	11.01.24	UPDATES TO LATEST SIGNAGE SKIN	RS	FOC
6	11.01.24	UPDATES TO GREEN PORTAL ADDED	RS	FOC
7	11.01.24	UPDATES TO M&S COMBINED	RS	FOC
8	11.01.24	UPDATES TO REFLECT LATEST SKIN	RS	FOC
9	11.01.24	UPDATES TO REFLECT LATEST SKIN	RS	FOC
REV	DATE	DESCRIPTION	BY	CHECKED

M&S
EST. 1844

STORE NAME
FOSSE PARK
COUNTRY
ENGLAND
PROJECT
FOODHALL & C&H RENEWAL

PROPOSED ELEVATIONS ADVERTISEMENT

CONSULTANT
LEWIS AND HICKEY ARCHITECTURE

CONSULTANT LOGO

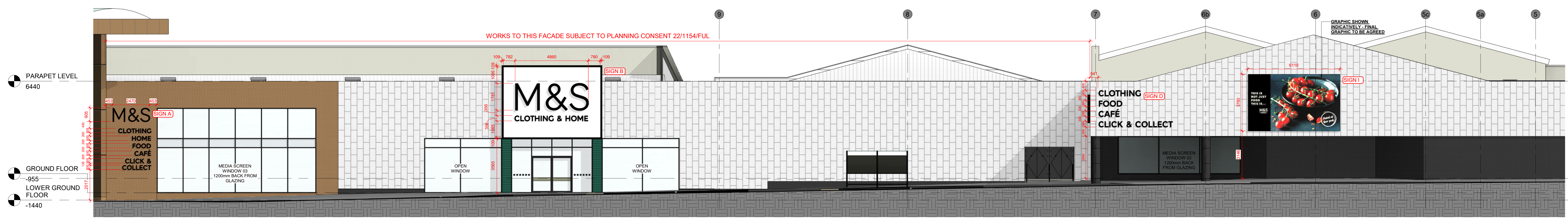
18 Farnham Road
Guildford
Surrey
GU1 4AA
Tel: 01483 550000
Fax: 01483 550000
Email: graham@lewisandhickey.com

SCALE	PAPER	DATE	DRAWN	CHECKED
As Indicated	A0	25.04.23	RS	FOC

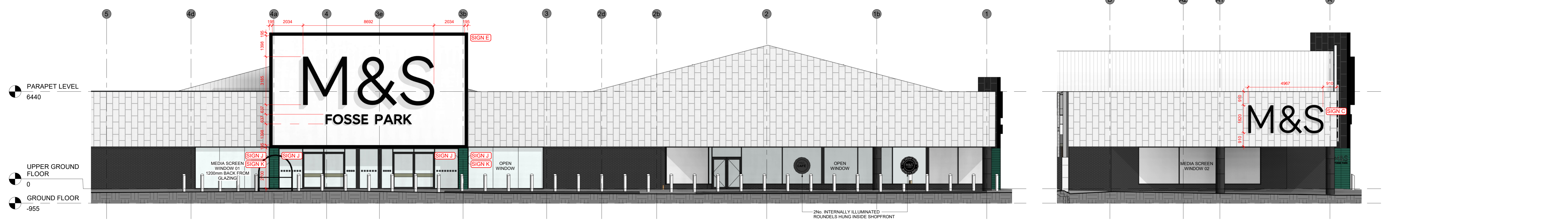
STORE NUMBER	PROJECT No.	DISCIPLINE CODE	DRAWING No.
0369	LFP173	A	406

CONSULTANT PROJECT No.
G4734

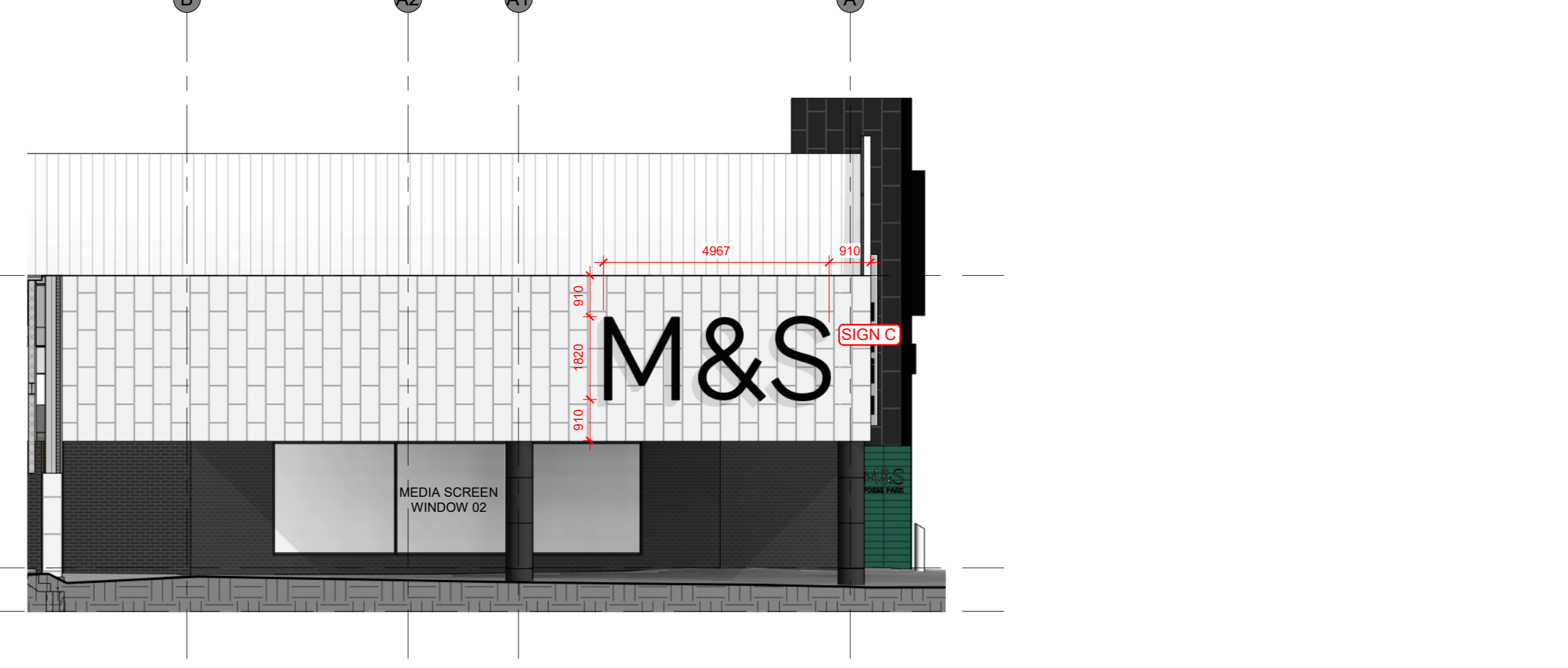
STATUS REVISION
P 9



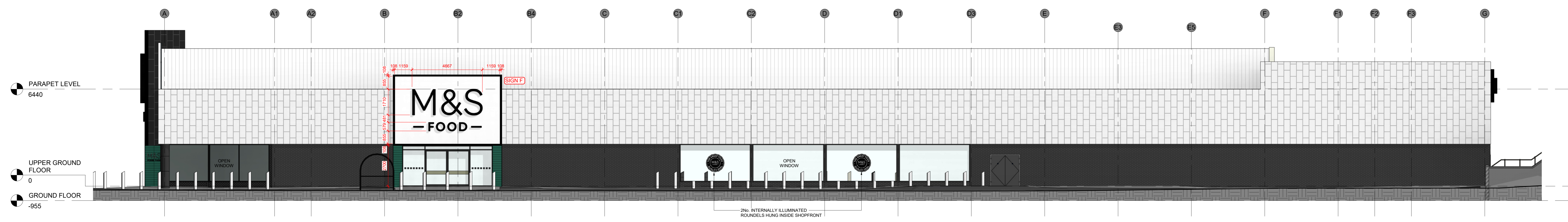
01 PROPOSED FRONT ELEVATION A
1: 100



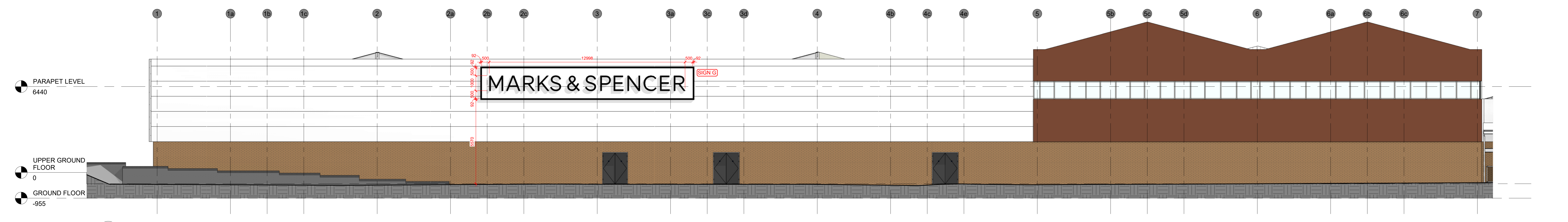
02 PROPOSED FRONT ELEVATION B
1: 100



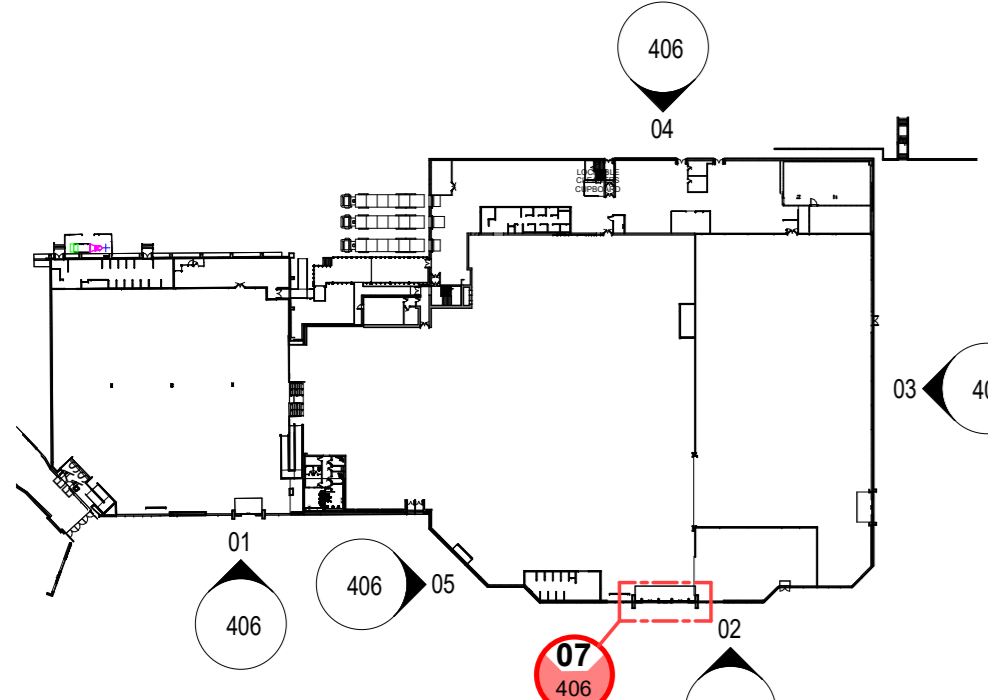
05 PROPOSED SIDE ELEVATION G
1: 100



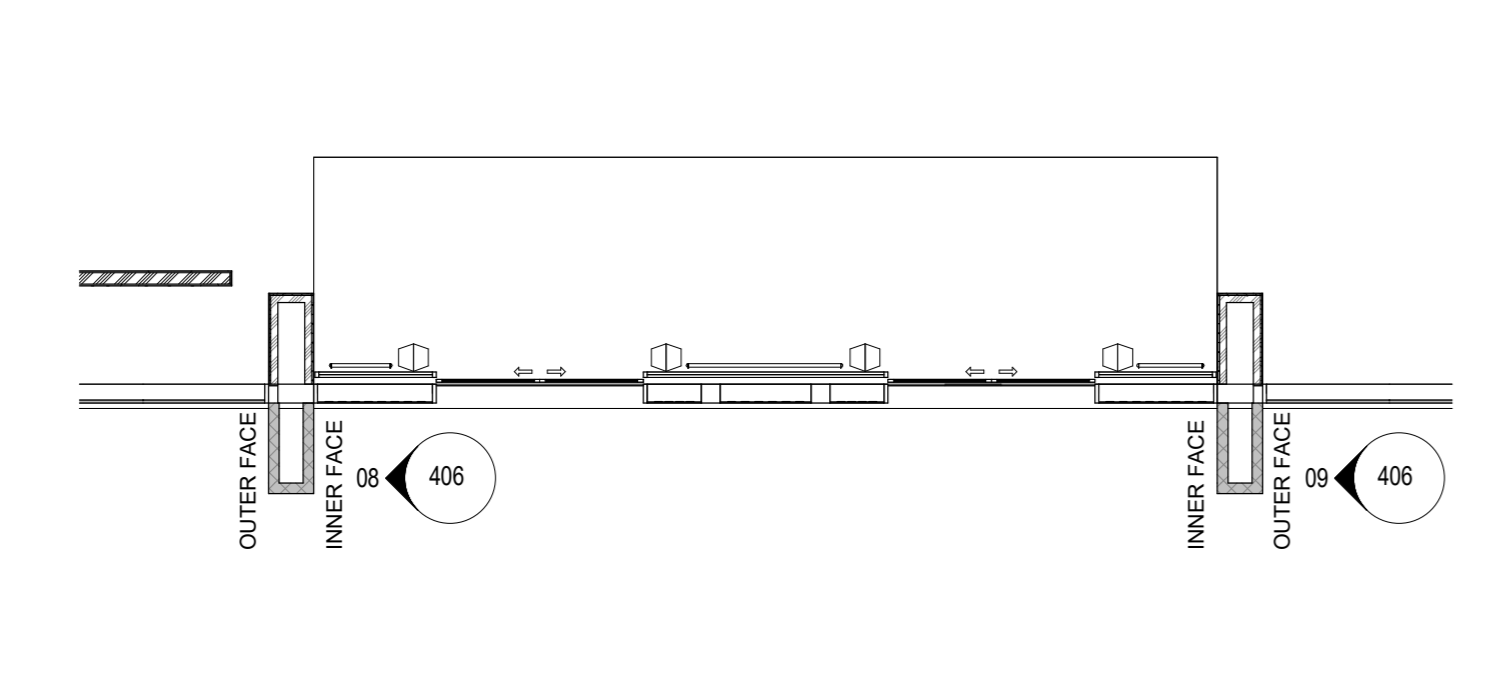
03 PROPOSED SIDE ELEVATION C
1: 100



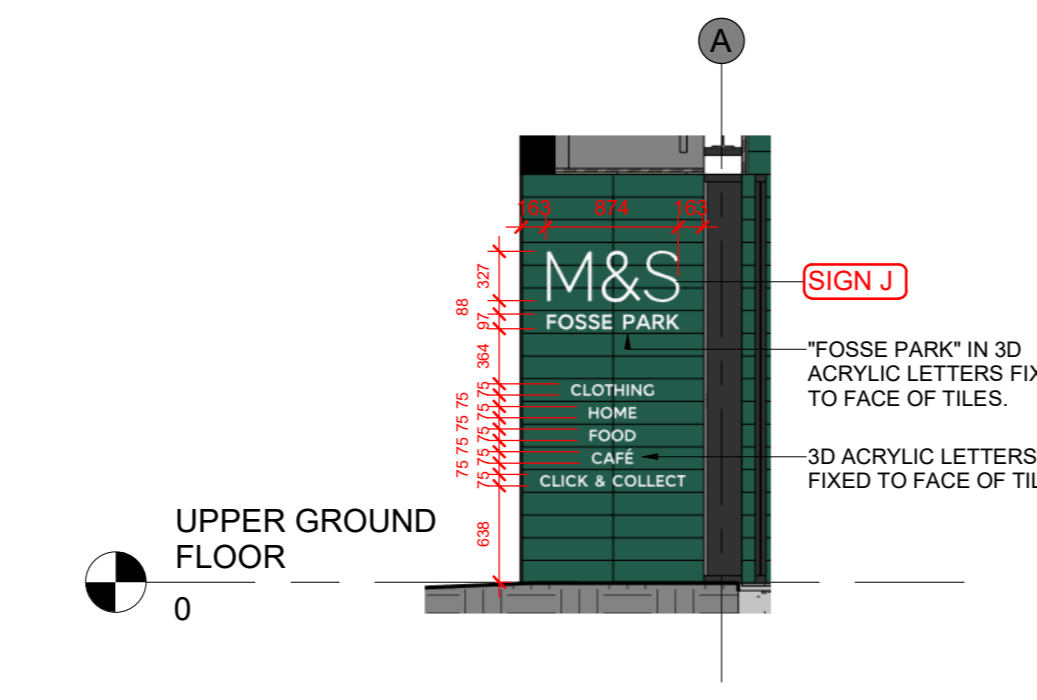
04 PROPOSED REAR ELEVATION D
1: 100



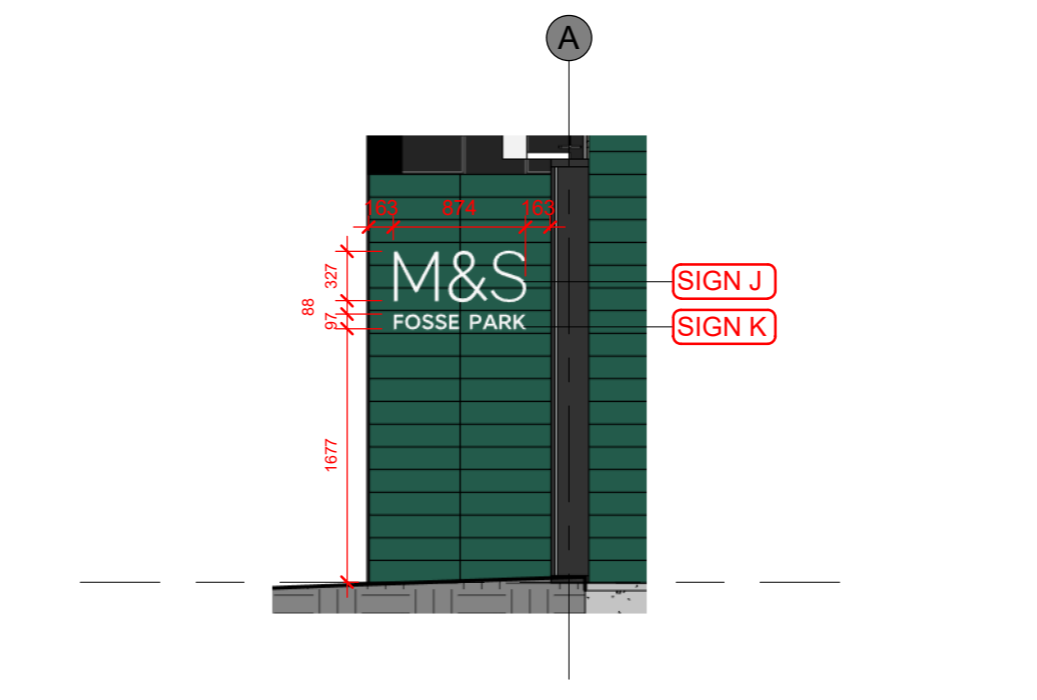
06 LOCATION PLAN
1: 1500



07 LOCATION PLAN
1: 100



08 PROPOSED TYPICAL INNER FACE PORTAL ELEVATION
1: 50



09 PROPOSED TYPICAL OUTER FACE PORTAL ELEVATION
1: 50